

# New Possibilities at the Edge





# Presenter



**Kent Melville**

*Sales Engineering Manager  
Inductive Automation*



# Agenda

- Ignition Edge Updates
- Edge IIoT Vs. Ignition Gateway
- Edge Architectures
- Edge + Multi-Tenant Functionality
- Audience Q&A







## The Unlimited Platform for SCADA and So Much More

- **Connect, Design, Deploy Without Limits:**
  - One central hub for everything on the plant floor
  - Create any kind of industrial application
  - Web-deploy clients to desktops, industrial displays & mobile devices
- **Unlimited licensing**
- **Industrial-strength security and stability**
- **Trusted by thousands of companies worldwide**



## Ignition! Cloud Edition

Ignition Cloud Edition leverages the power of the largest cloud platforms, AWS and Azure, allowing you to easily tap into additional services and flexibility.



## Ignition!

The standard Ignition platform has a full range of drivers and tools to connect to any device and develop applications for SCADA, HMI, MES and more.



## IgnitionEDGE!

Ignition Edge runs on embedded devices and offers edge computing and data collection from remote sites.





# Previous Ignition Edge Product Line



**Ignition Edge  
IIoT**



**Ignition Edge  
Panel**



**Ignition Edge  
Compute**



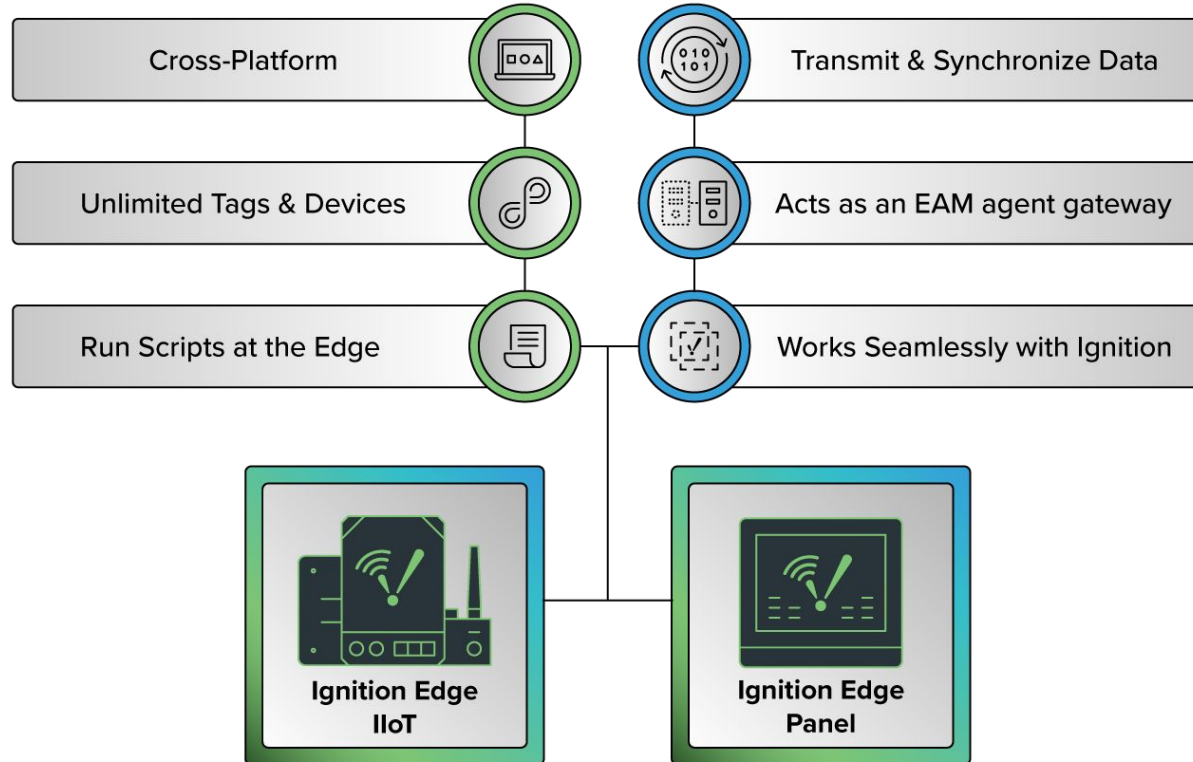
**Ignition Edge  
Sync Services**



**Ignition Edge  
EAM**



# Updated Ignition Edge Product Line





# Ignition Edge IIoT

- Works with Ignition IIoT solutions and other IIoT platforms
- Turns your devices into MQTT-enabled edge gateways
- Polls remote data and publishes to an MQTT server





# Ignition Edge Panel

- Ignition Edge IIoT + Local visualization
- Two Perspective sessions or one local and one remote Vision client
- Good for standalone HMIs and local-client fallback for field HMIs.
- Can publish MQTT data





# Why We Updated Ignition Edge

- Overly complex product options
  - Too difficult for customers to choose the right solution.
- It seemed like a modular platform but was intended to be an edge-focused platform.





# Ignition Edge Limitations

- Ignition Edge is not full SCADA
  - For small purpose-built systems.
  - For forwarding data or connecting to something
- Should not be used as a standalone historian
  - Not designed for long-term storage
  - Doesn't have enough history/data storage





# Ignition Edge Limitations

- Not for running an entire facility
  - Designed for single-panel displays with bonus display
- Doesn't support adding modules like standard Ignition





# Ignition Edge IIoT Vs. Standard Ignition Gateway

- Do you need access to a database?
- Do I need more than 2 Sessions/Clients? How can you add clients to Ignition Edge?
- Do you just need a local HMI/fallback client in the field?
- Are you looking for a local data buffer next to a critical piece of equipment?

Ignition**EDGE**! 

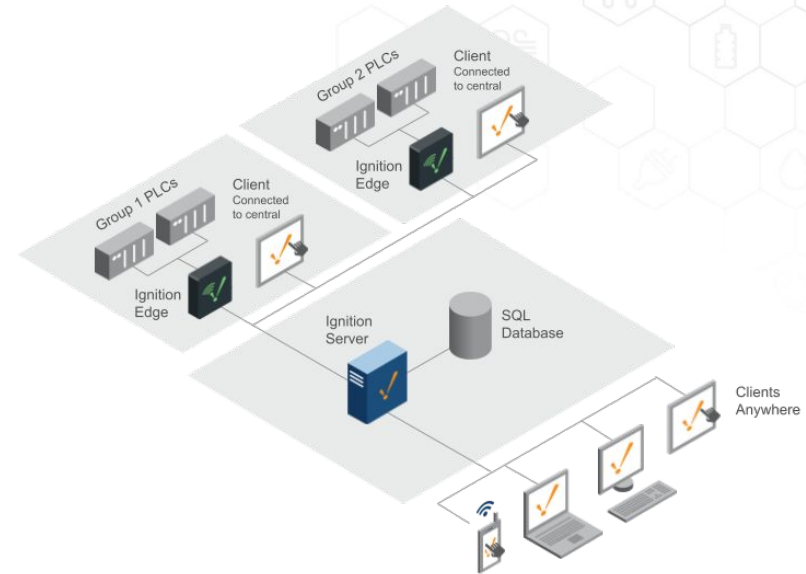
or

Ignition! 



# Ignition Edge IIoT with SCADA Architecture

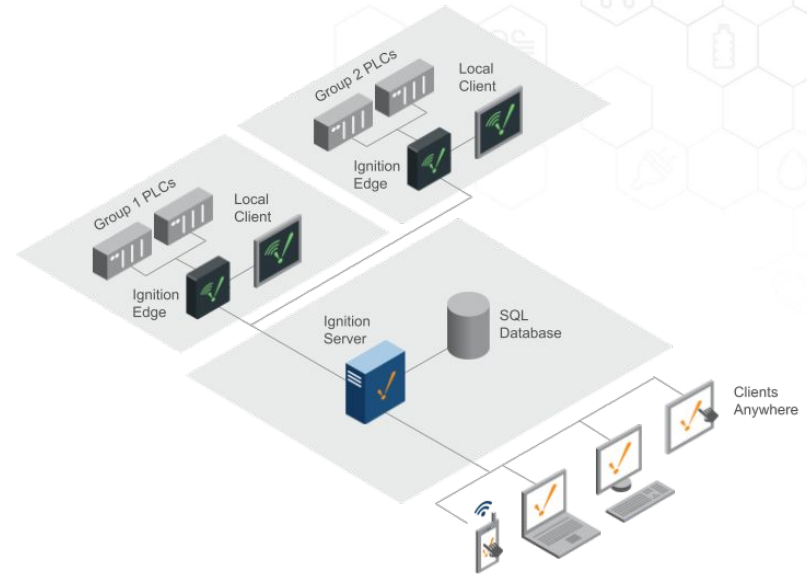
- Multiple facilities with a central system looking at everything
- Ignition Edge can be on-premise as a data collector
- Publish data centrally
- Adds IIoT to your SCADA system
- Regulated industries need local data collection at remote sites.
  - Data needs to come up centrally from those sites.
  - Need to hold onto the data for one month as a buffer





# Ignition Edge Panel Architecture

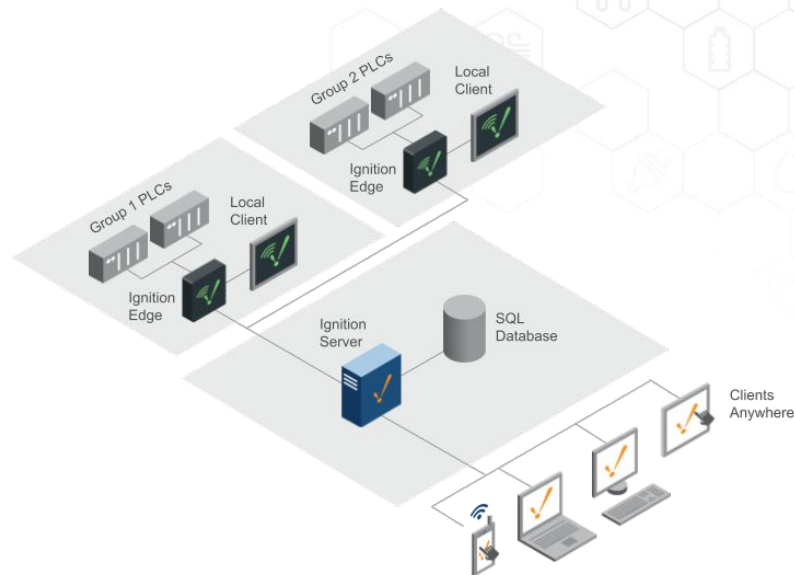
- Provides local visualization from remote sites and sends data to a centralized system.
- Standalone HMI at the edge combined with other screens to create an Ignition HMI





# Compute Architecture

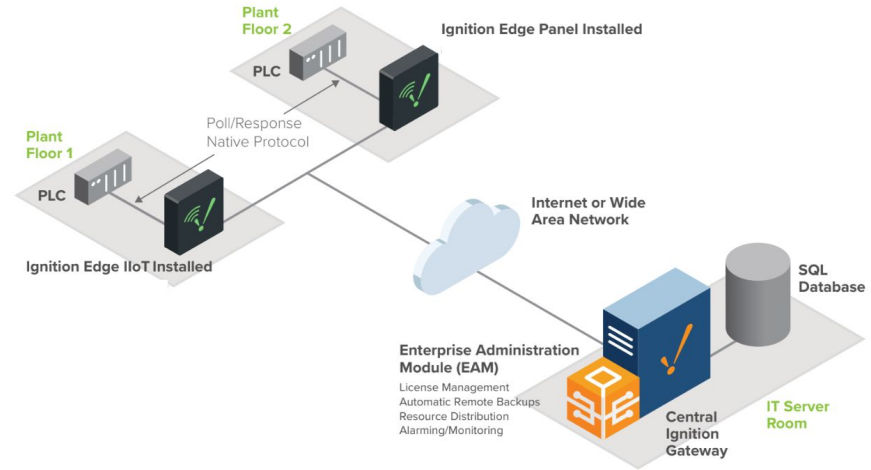
- Ignition Edge now comes with Compute included
  - Makes it easier to add logic.
- Processing at the site
- Scheduled scripts for triggering systems.





# EAM Architecture

- Ignition Edge now comes with Enterprise Administration Module (EAM) functionality
- Automate management if you have multiple Edge sites and a centralized Ignition system.
- Define your central gateway as an EAM controller and all of your Edge devices/gateways as EAM agents
- Remotely monitor servers, push out project updates, and more.





# Ignition Edge EAM, Compute, and Sync Services

- These functionalities are free with upgrade support
- Without support, these functionalities can be added for a discount

Current Edge License	Upgrade To	Cost with Upgrade Protection
Panel and IIoT (with any other products)	New Panel	Free
Panel w/o IIoT (with any other products)	Add Sync Services, Compute, and EAM (if not present), and add Unlimited Devices (for included drivers)	Free
	New Panel	\$350



# Edge Bulk Discounts

## Ignition**EDGE!** Bulk Schedule

Number of Edge Licenses	Discount Percentage
1–4	0%
5–24	5%
25–99	10%
100–249	20%
250–499	30%
500+	40%

Percentages shown are for purchasing Ignition Edge licenses in bulk.  
To place a bulk order, contact your sales representative or call 1-800-266-7798





Ignition! Cloud  
Edition



# Ignition Cloud Edition Multi-Tenant Functionality

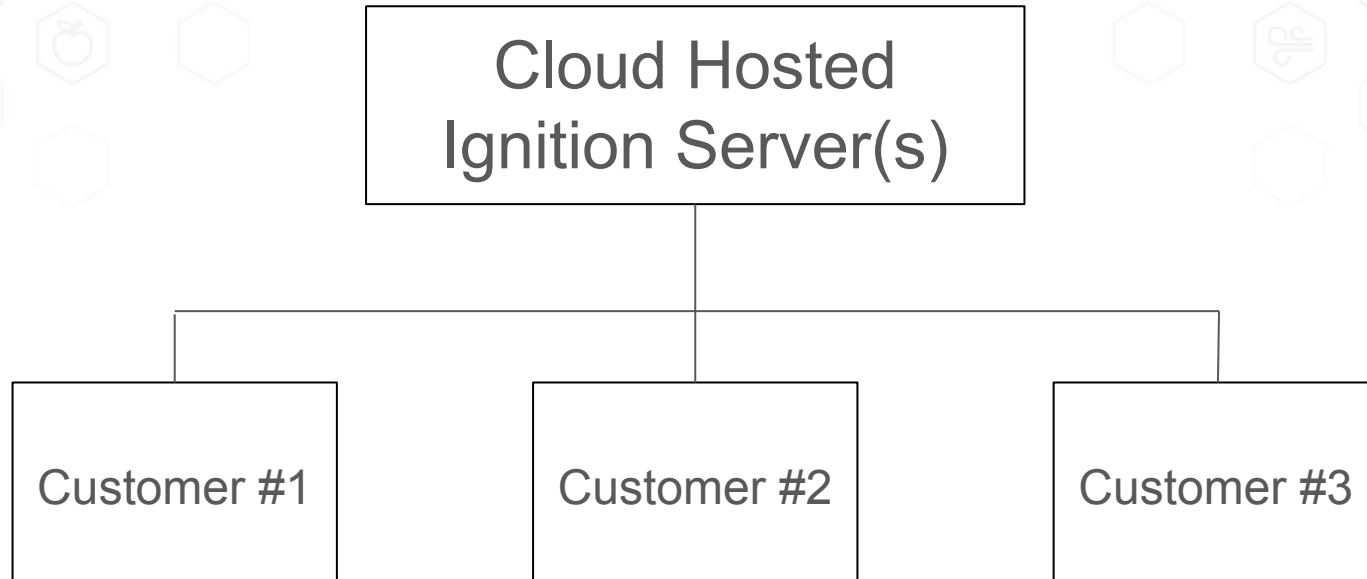
What is multi-tenant functionality?

- For building reusable commercial applications.
- Multi-tenant functionality offers a new economic model
  - Pay-as-you-go service model





# Ignition Cloud Edition Multi-Tenant Functionality





# Ignition Cloud Edition Multi-Tenant Functionality

## Why enable multi-tenant functionality?

- More freedom leads to more innovation
- Customers wanted to build custom commercial hosted applications on top of Ignition.
- This is the best place to do this
  - The cloud is flexible and accessible





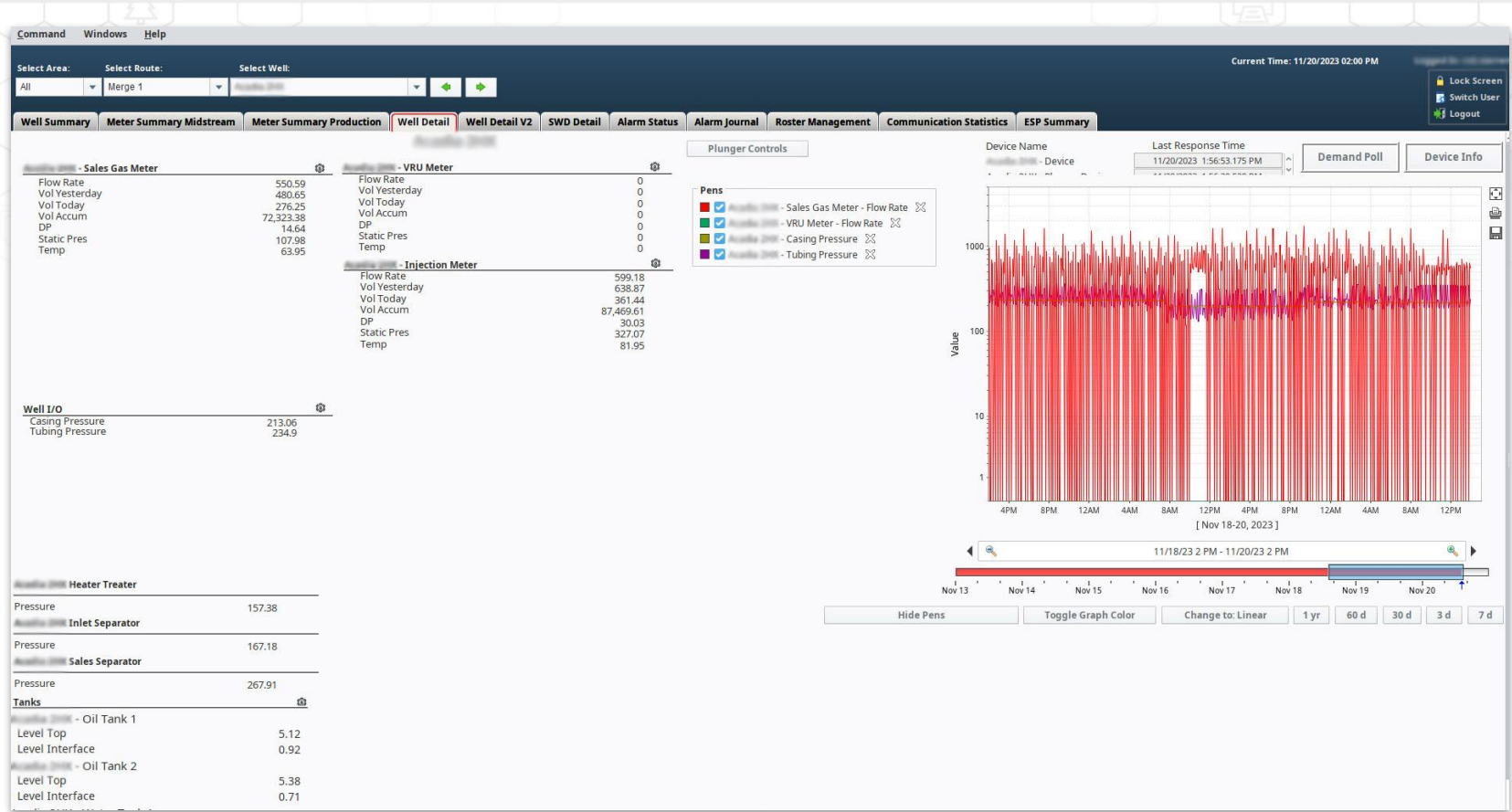
# Ignition Cloud Edition Multi-Tenant Functionality

- Allows a company (such as an Integrator) to build an application in Ignition and sell it as a service to customers. They can host multiple customers on the same Ignition server.
- Organizations with common challenges can search for multi-tenant applications that provide the functionality they need at a cheaper price.



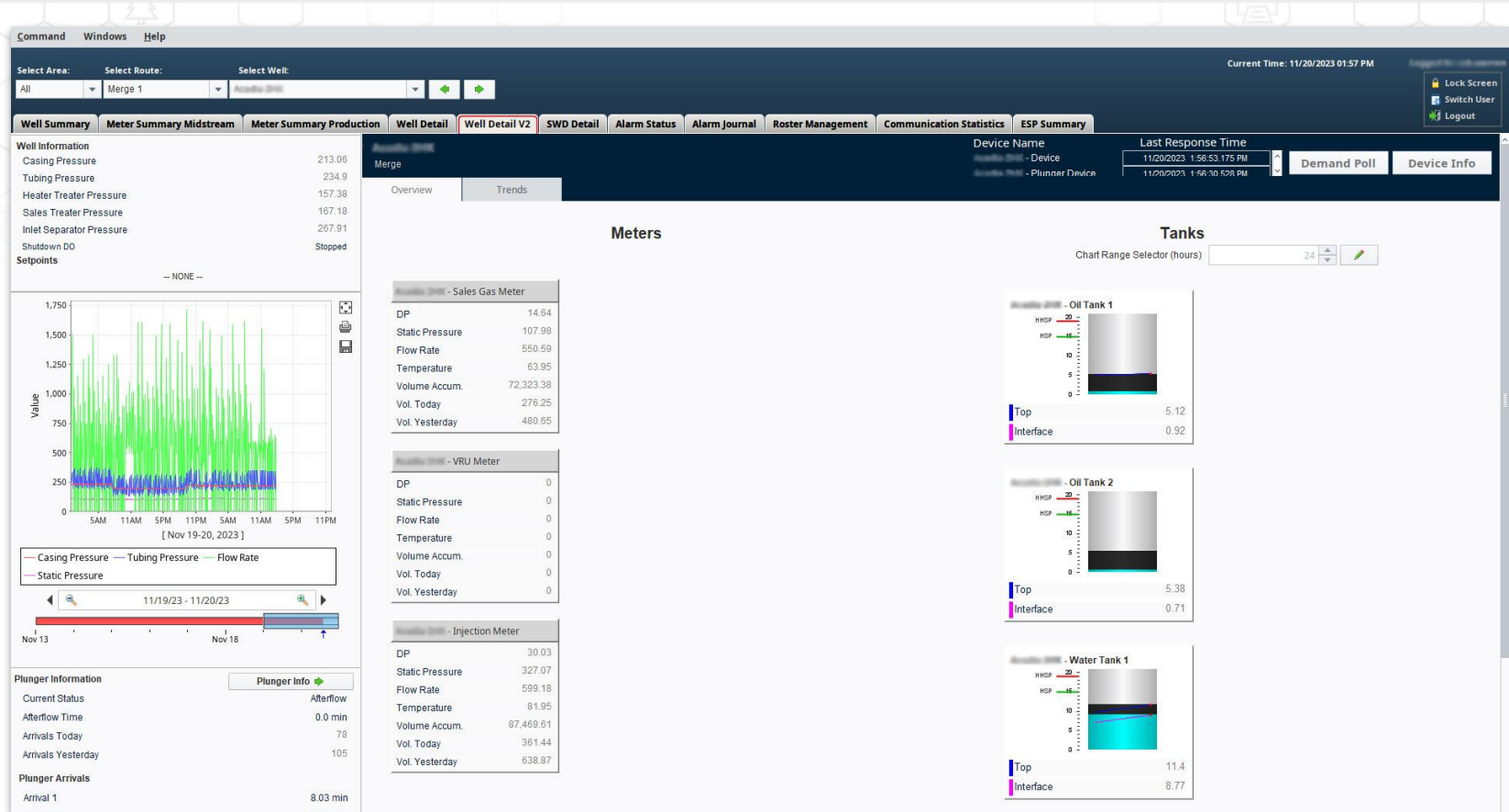


# Example: Deep Fork Automation



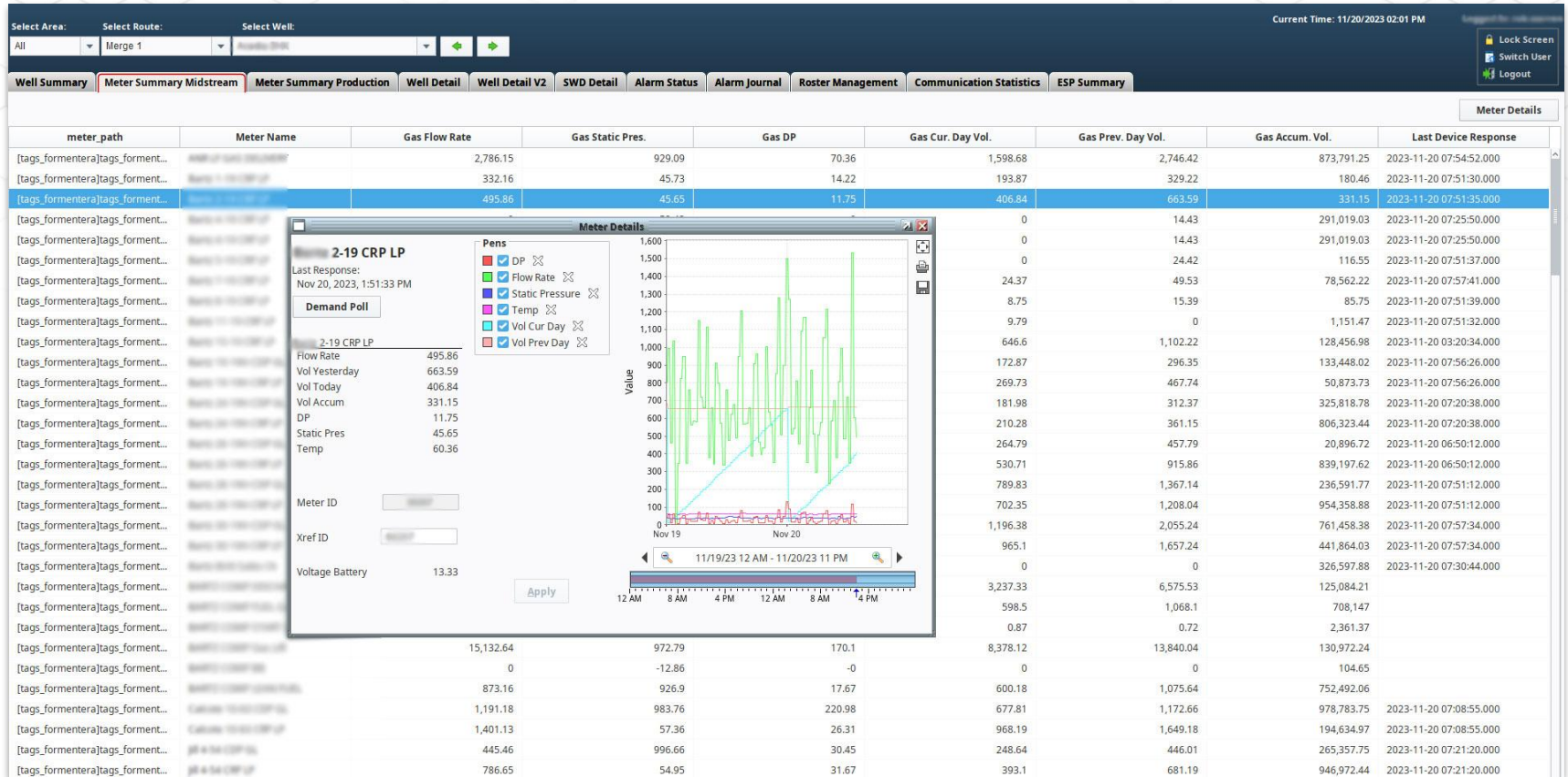


# Example: Deep Fork Automation





# Example: Deep Fork Automation





# Multi-Tenant Functionality and Edge Integration



**Multi-Tenant  
Licensing**

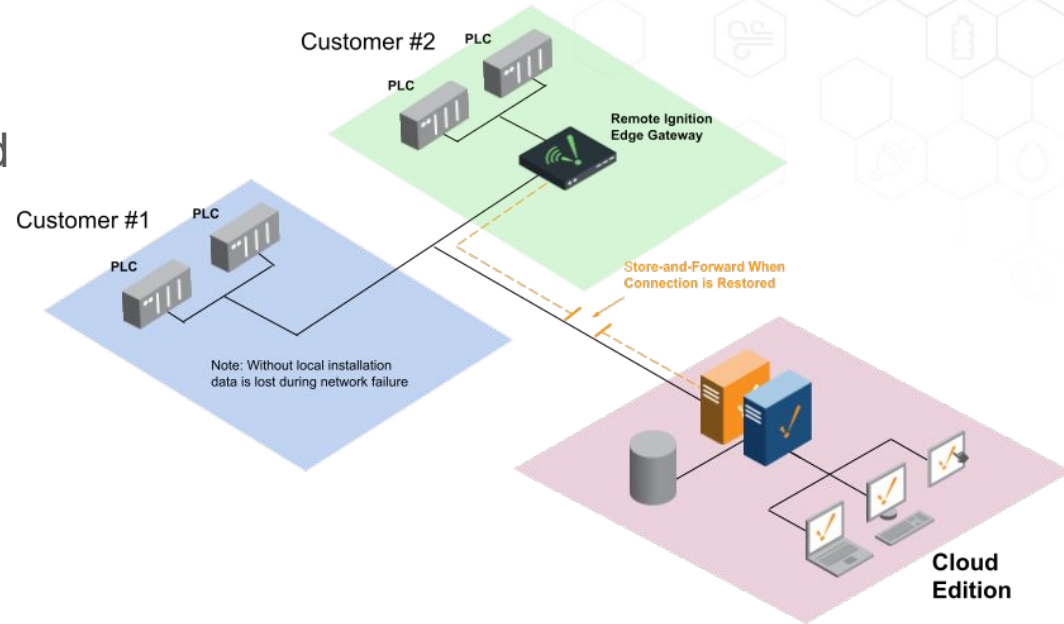


**Product Line  
Simplification**



# Multi-Tenant Functionality and Edge Architecture

- Combining offers flexible and scalable solutions
  - Ignition Edge for unlimited local connections
  - Centralized cloud system for wider data access
- Cloud Edition consolidating data for multiple customers with an Edge gateway.





# Learn More: From the Edge to the Cloud

Learn more about Ignition Edge at:

<https://page.inductiveautomation.com/ignition-edge>

Learn more about Ignition Cloud Edition at:

<https://inductiveautomation.com/ignition/cloud-edition>

Learn more about multi-tenant functionality:

<https://inductiveautomation.com/resources/article/hostedmultitenant-ignition-cloud-edition-guidance>





**Ready to Try Ignition for Yourself?**

Download the full version for free at:  
**[inductiveautomation.com](https://www.inductiveautomation.com)**





**inductiveuniversity.com**

*Ignition User Manual also available at:  
**[docs.inductiveautomation.com](https://docs.inductiveautomation.com)***



# International Distributors

<b>Brazil</b>	FG Automação Industrial	<a href="http://www.fgltda.com.br">www.fgltda.com.br</a>
<b>Central America</b>	NV Tecnologías S.A.	<a href="http://www.nvtecnologias.com">www.nvtecnologias.com</a>
<b>France</b>	AXONE-iO	<a href="http://www.axone-io.com">www.axone-io.com</a>
<b>Italy</b>	EFA Automazione S.p.A	<a href="http://www.efa.it">www.efa.it</a>
<b>Middle East/North Africa</b>	Clarien Solutions	<a href="http://www.clarien.solutions">www.clarien.solutions</a>
<b>Norway &amp; Sweden</b>	Autic System AS	<a href="http://www.autic.no">www.autic.no</a>
<b>South Africa</b>	Element8	<a href="https://element8.co.za">https://element8.co.za</a>
<b>Switzerland</b>	MPI Technologies	<a href="https://mpi.ch">https://mpi.ch</a>

Contact International Distribution Manager Yegor Karnaukhov at: [ykarnaukhov@inductiveautomation.com](mailto:ykarnaukhov@inductiveautomation.com)



# Questions & Comments



Call us at: **800-266-7798**



**Kent  
Hahn**  
Director of Sales  
x439



**Ramin  
Rofagha**  
x251



**Lester  
Ares**  
x214



**Vanessa  
Garcia**  
x231



**Shane  
Miller**  
x218



**Kristin  
Bainbridge**  
x308



**Maria  
Chinappi**  
x264



**Myron  
Hoertling**  
x224



**Robert  
Graves**  
x142



**DJ  
Parsons**  
x150



**Roman  
Couvrette**  
x163



**Abran  
Mathews**  
x151



**Joe  
Rzepka**  
x333

For Inductive Automation Australia, call: **1300 10 8088**



# Thank You

Stay connected to us on social media  
& subscribe to news feeds:

