

Field Papers

Sungai Miai - Pengeran - Pasar Lama
<http://fieldpapers.org/atlasses/2zi4pl4u/A1>

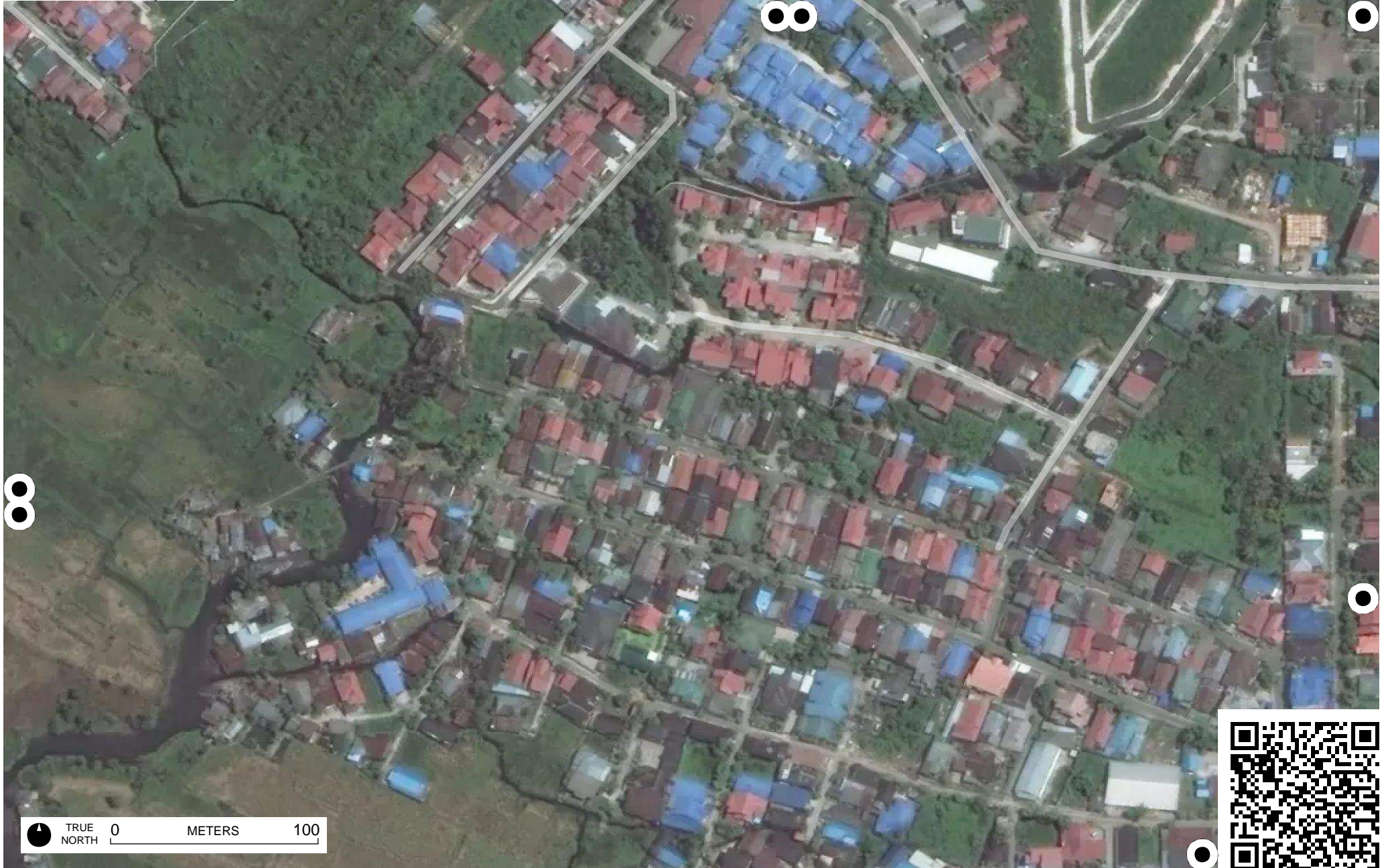


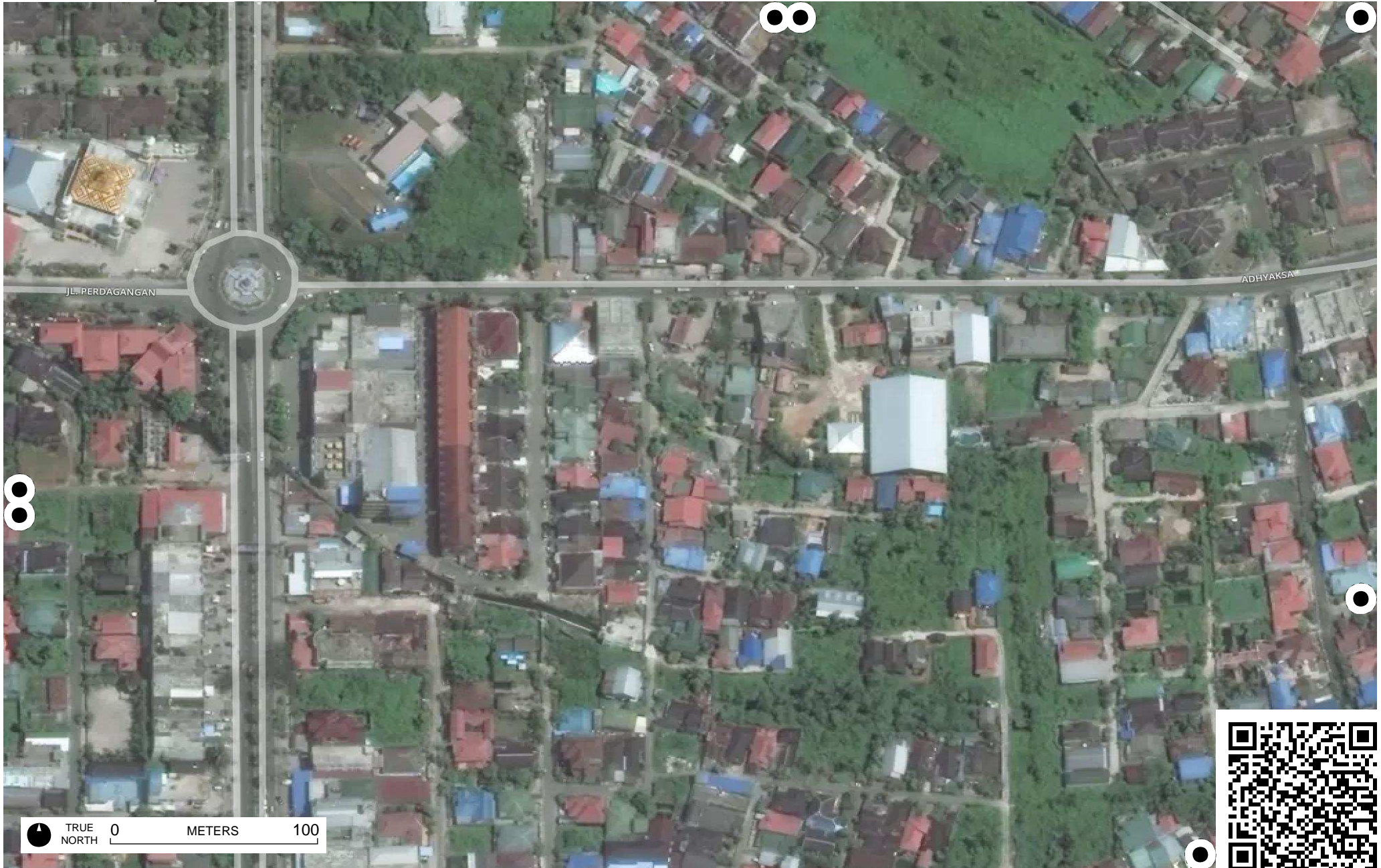
TRUE NORTH 0 METERS 100

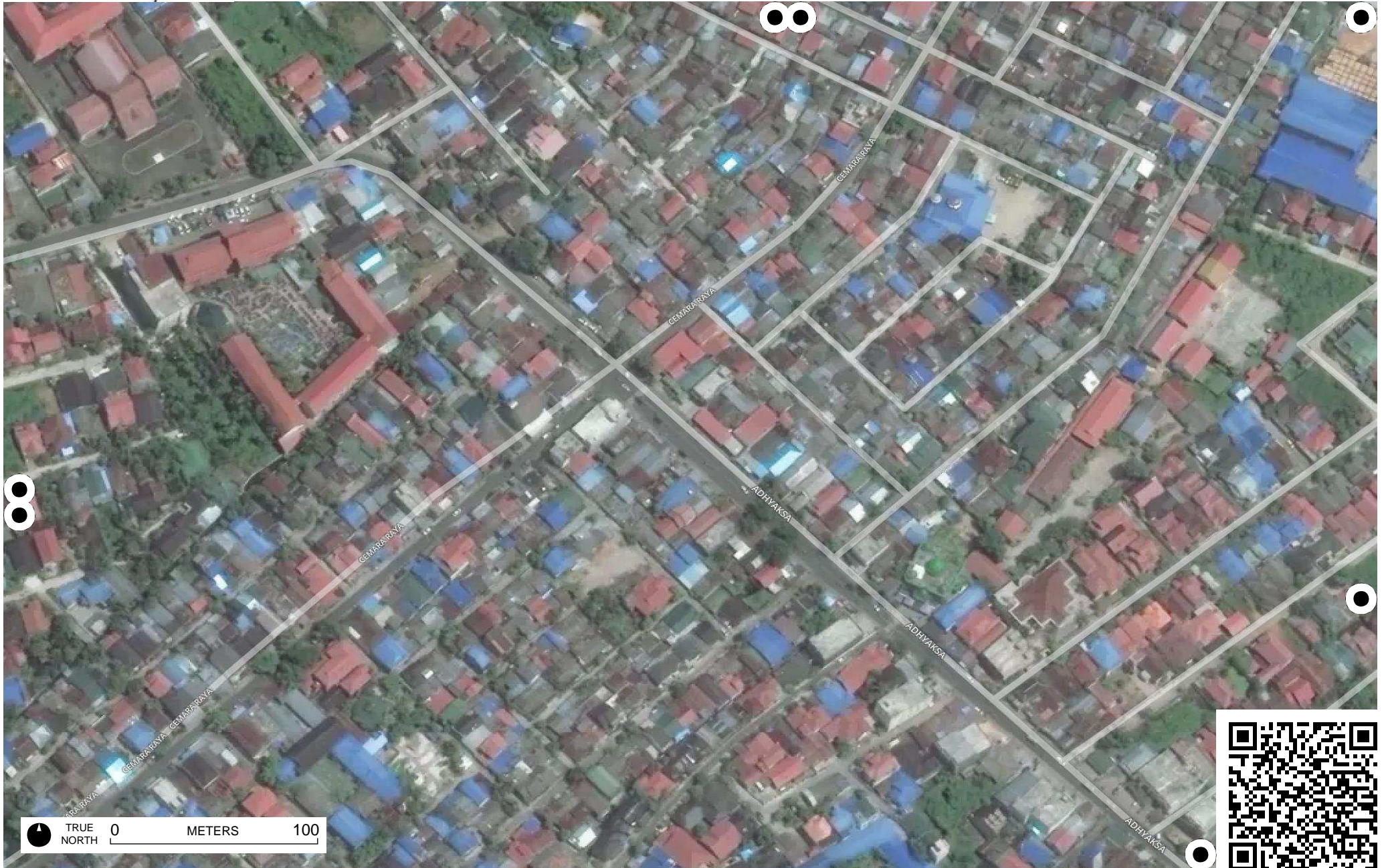


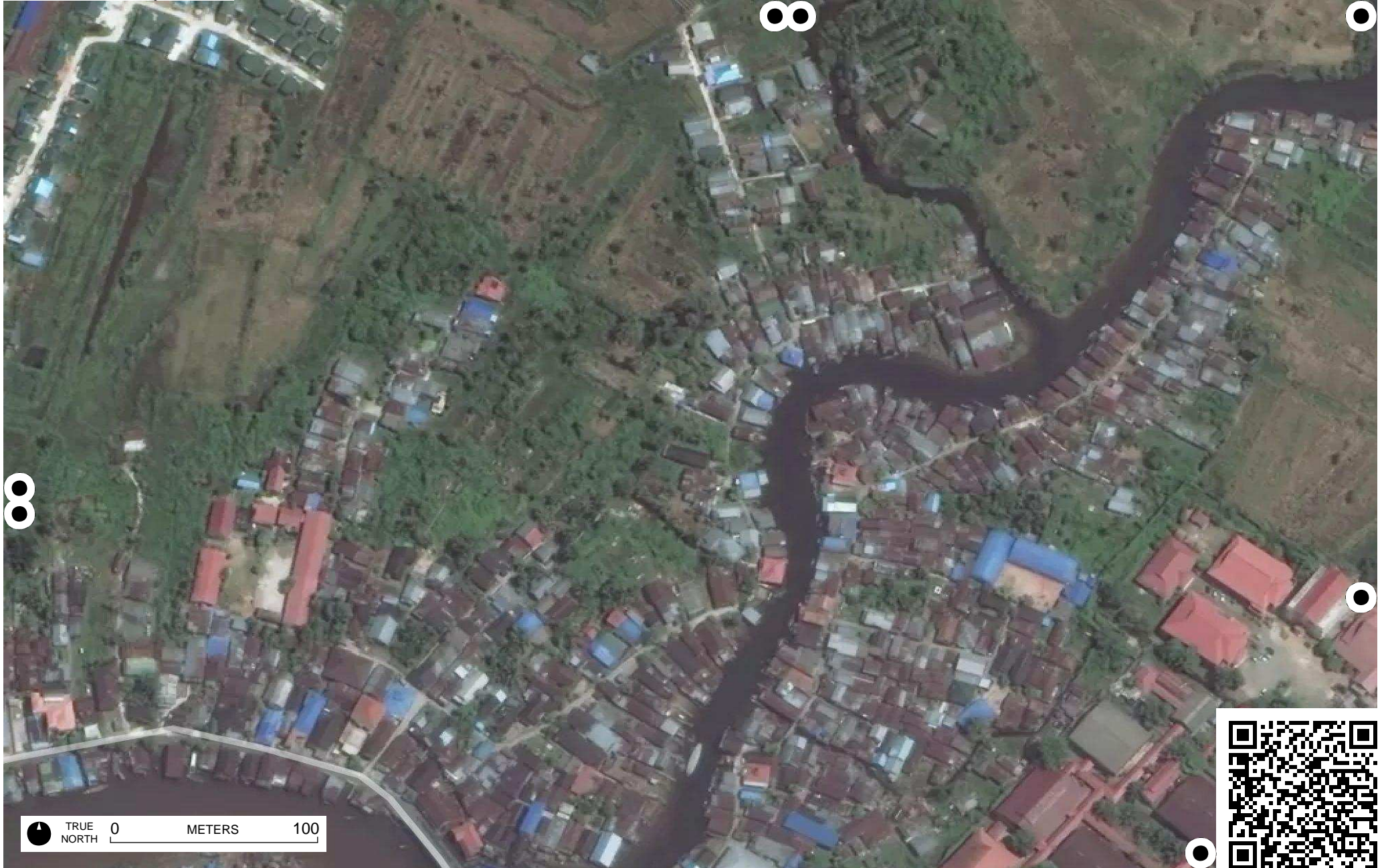
Field Papers

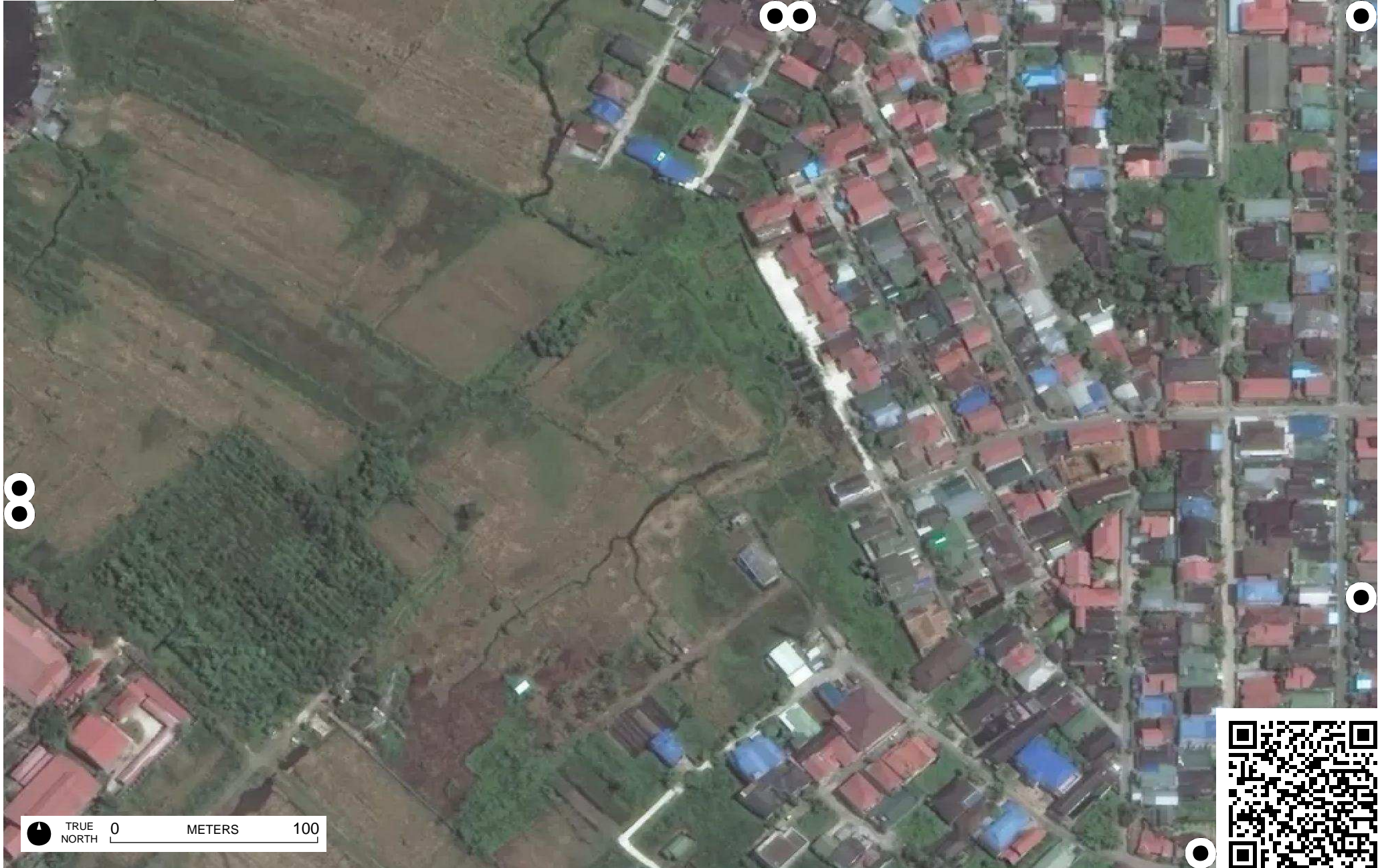
Sungai Miai - Pengeran - Pasar Lama
<http://fieldpapers.org/atlasses/2zi4pl4u/A2>





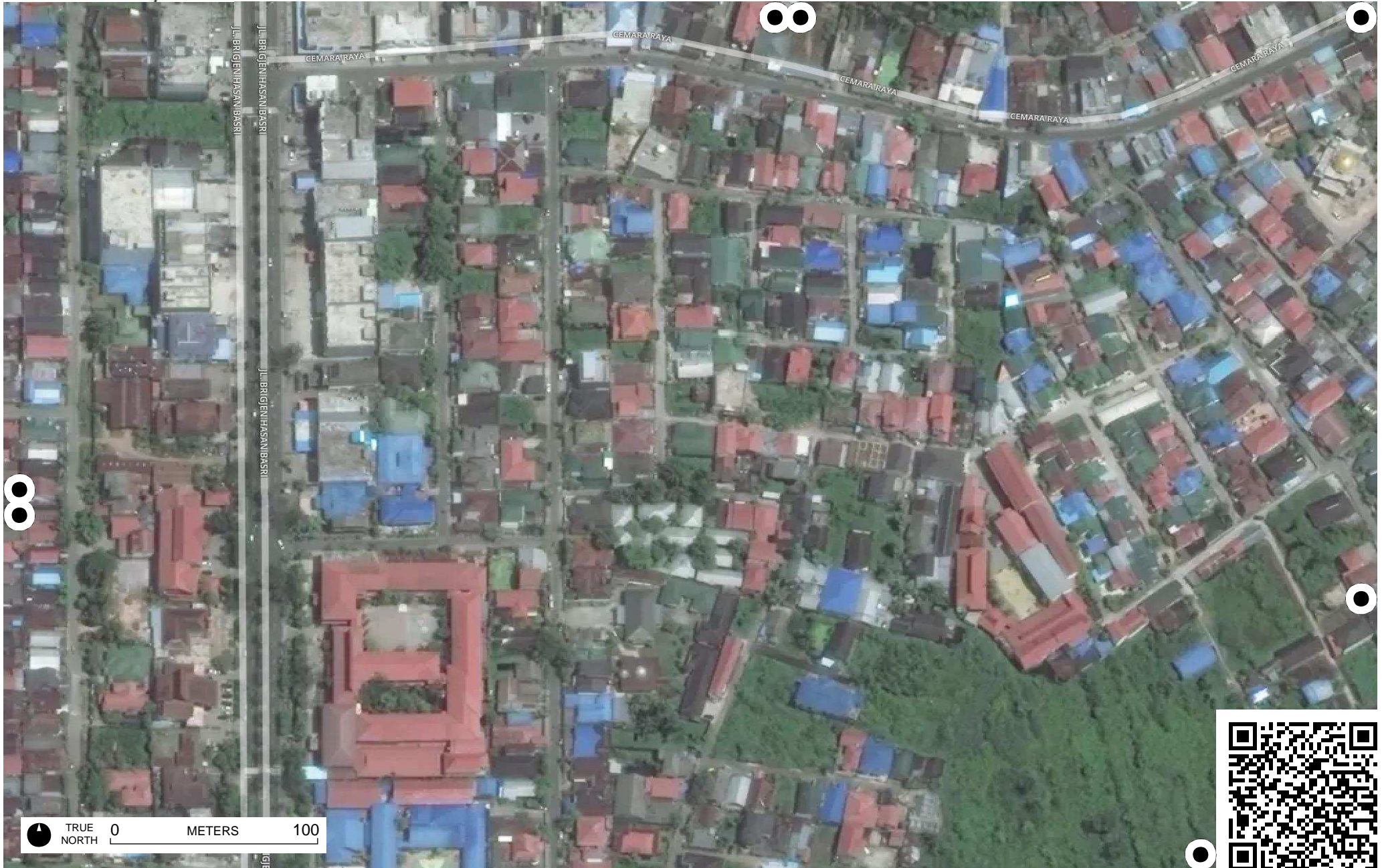


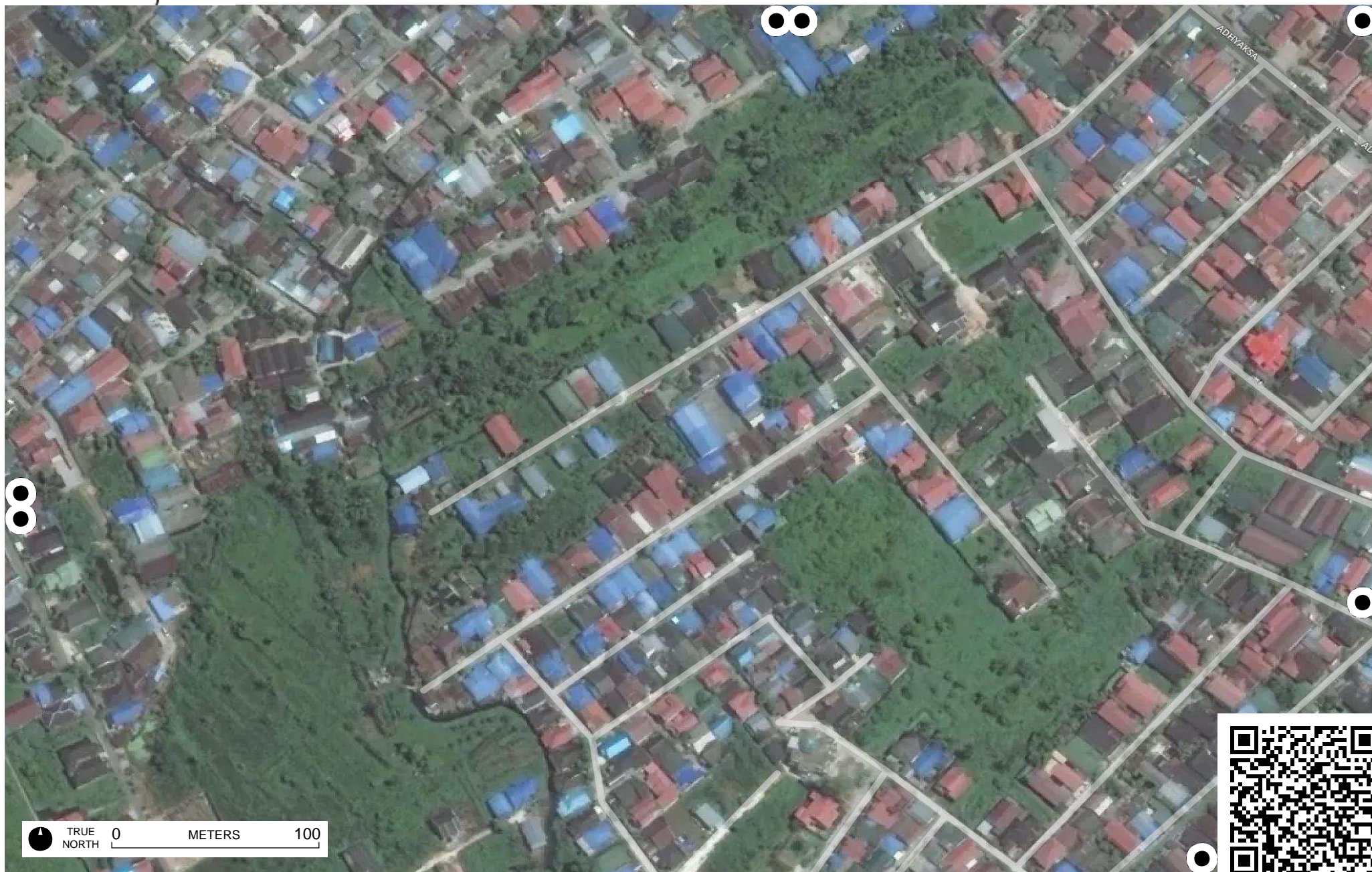


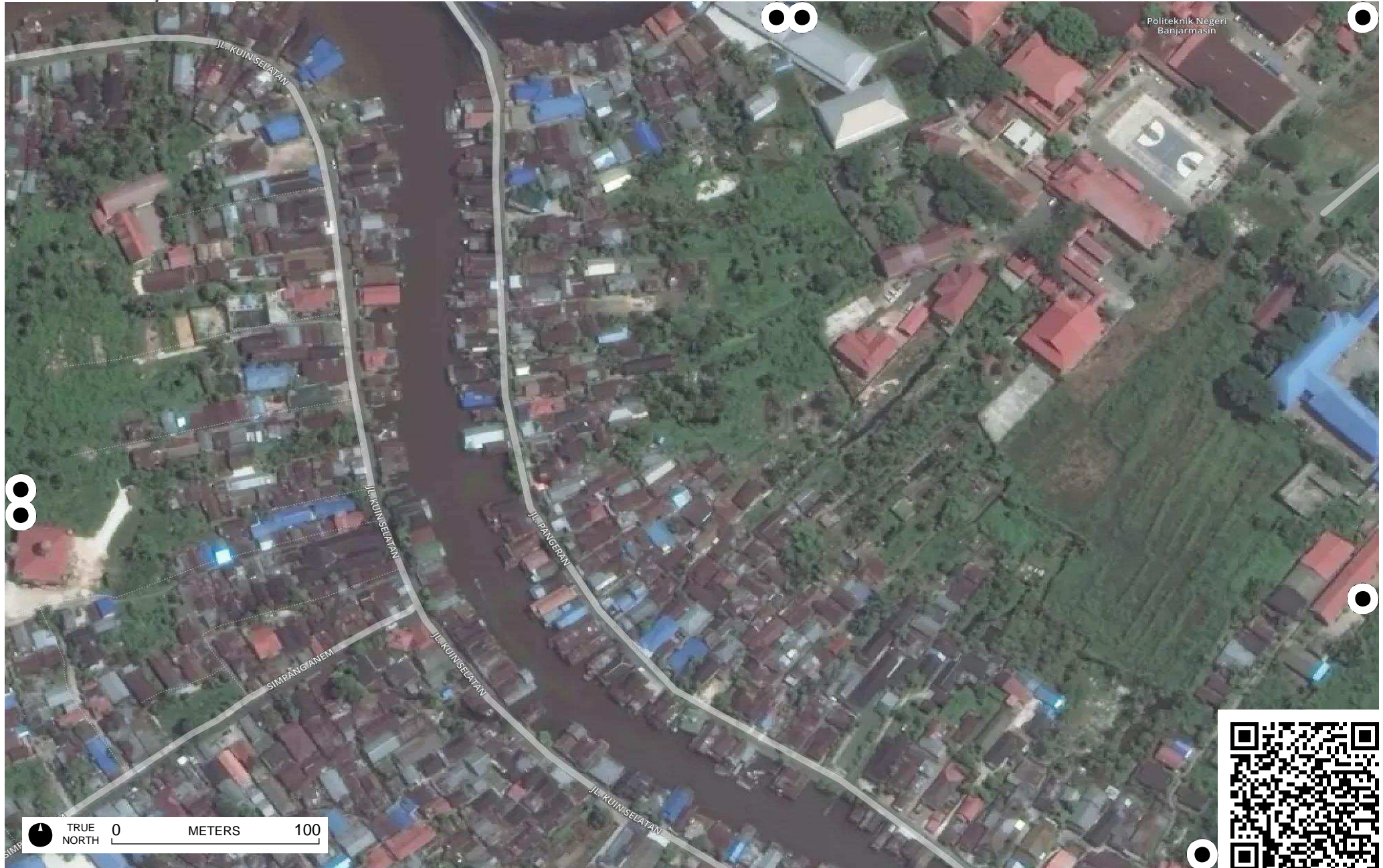


TRUE NORTH 0 METERS 100







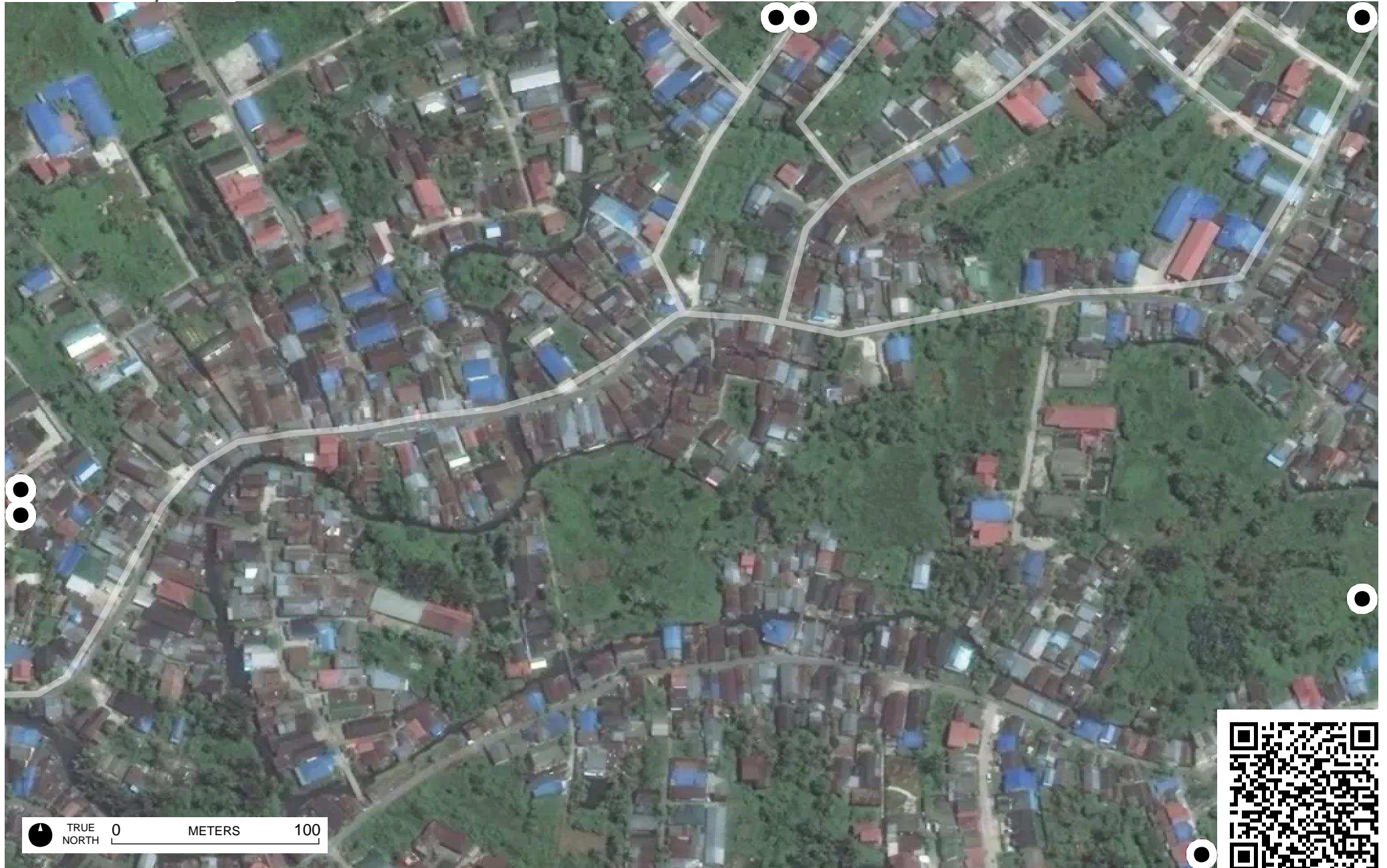






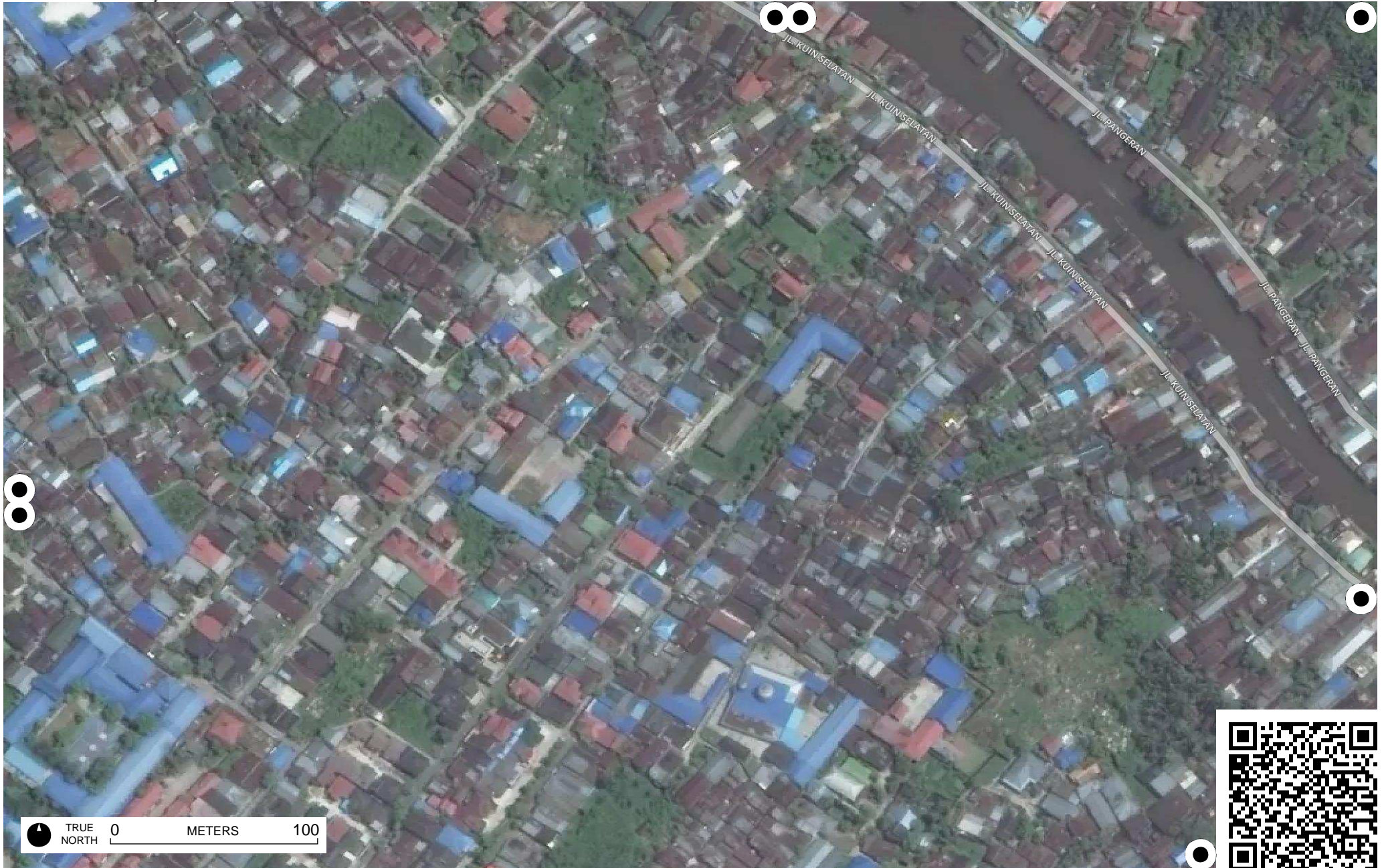
Field Papers

Sungai Miai - Pengeran - Pasar Lama
<http://fieldpapers.org/atlasses/2zi4pl4u/C4>



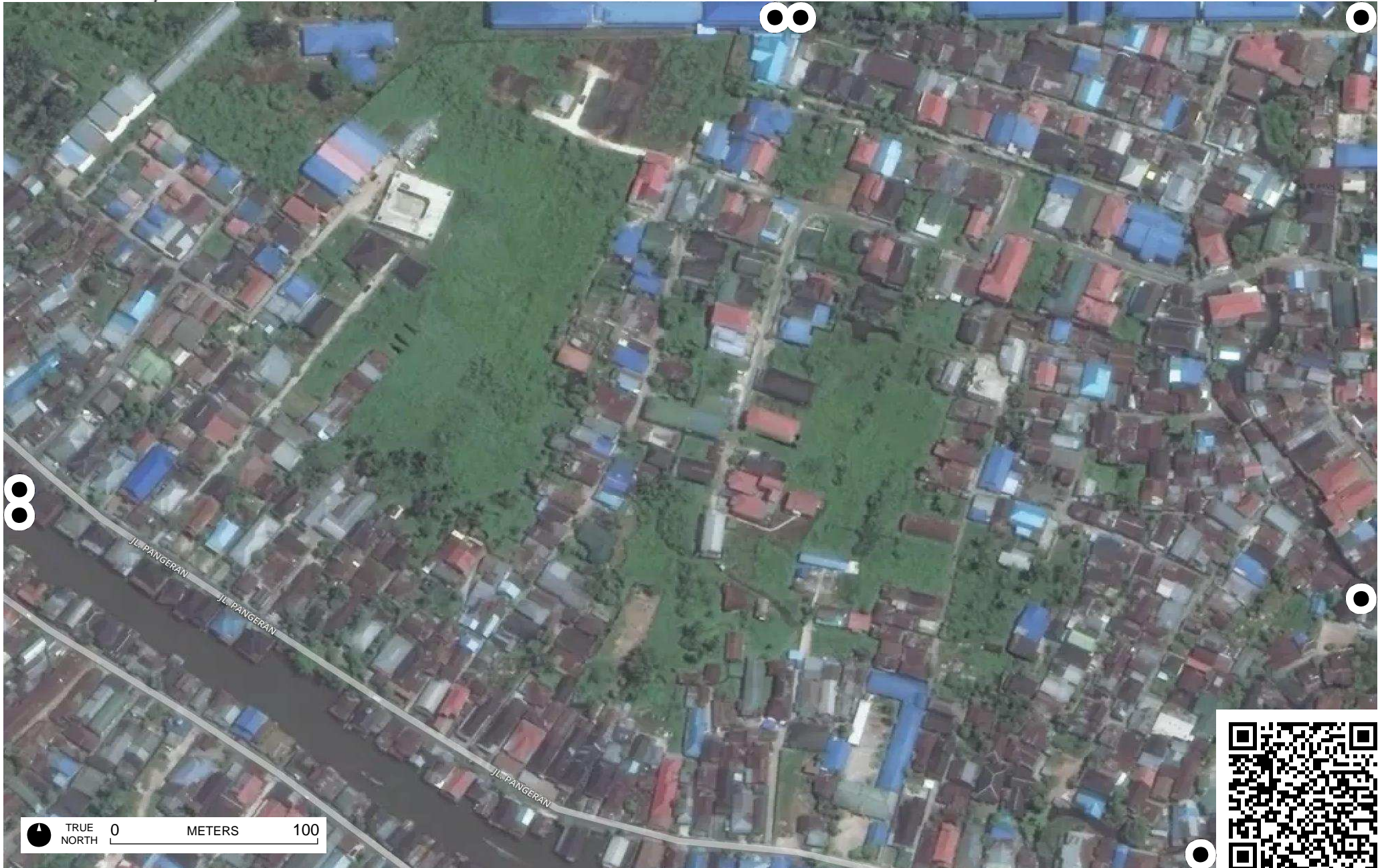
TRUE NORTH 0 METERS 100

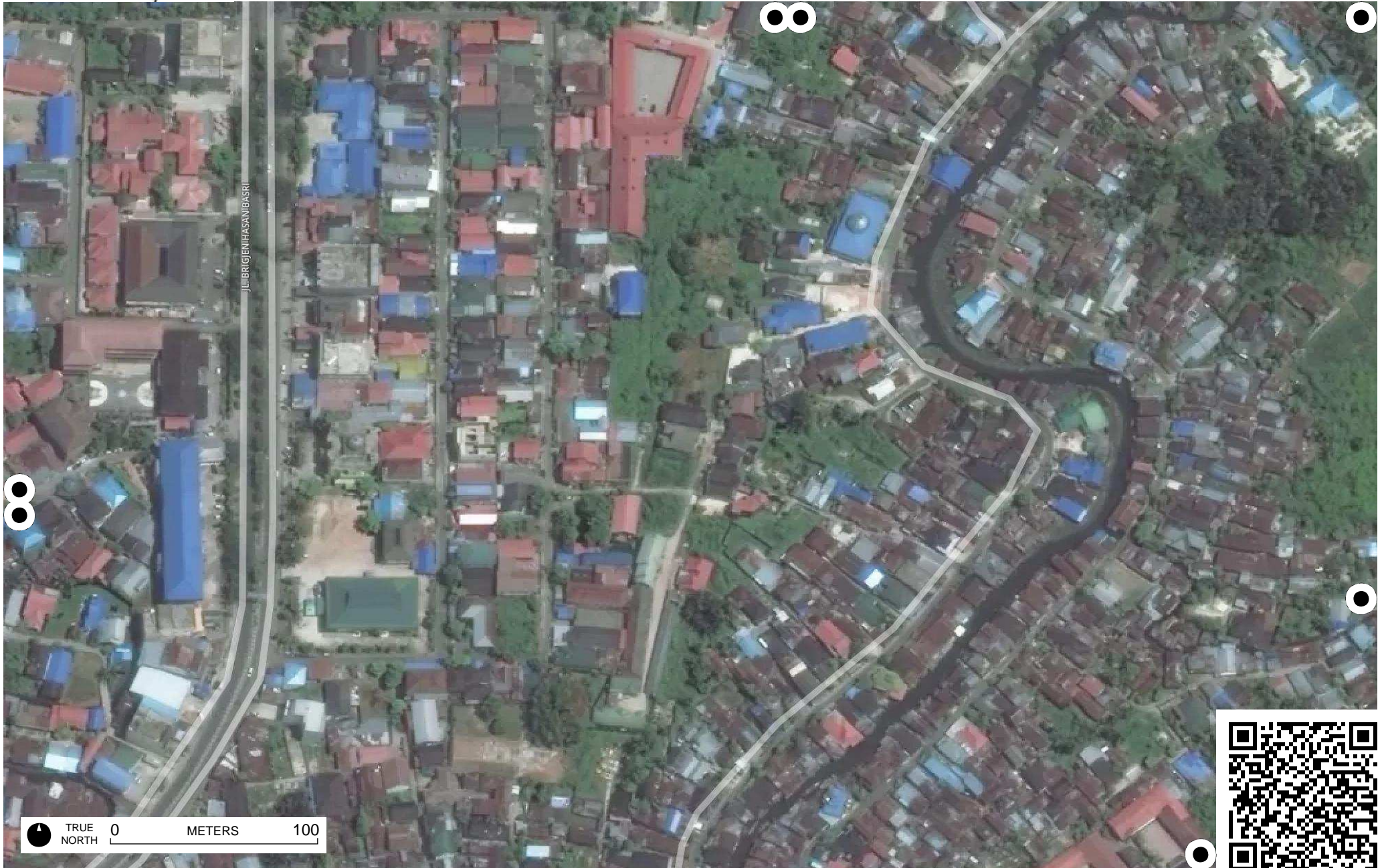


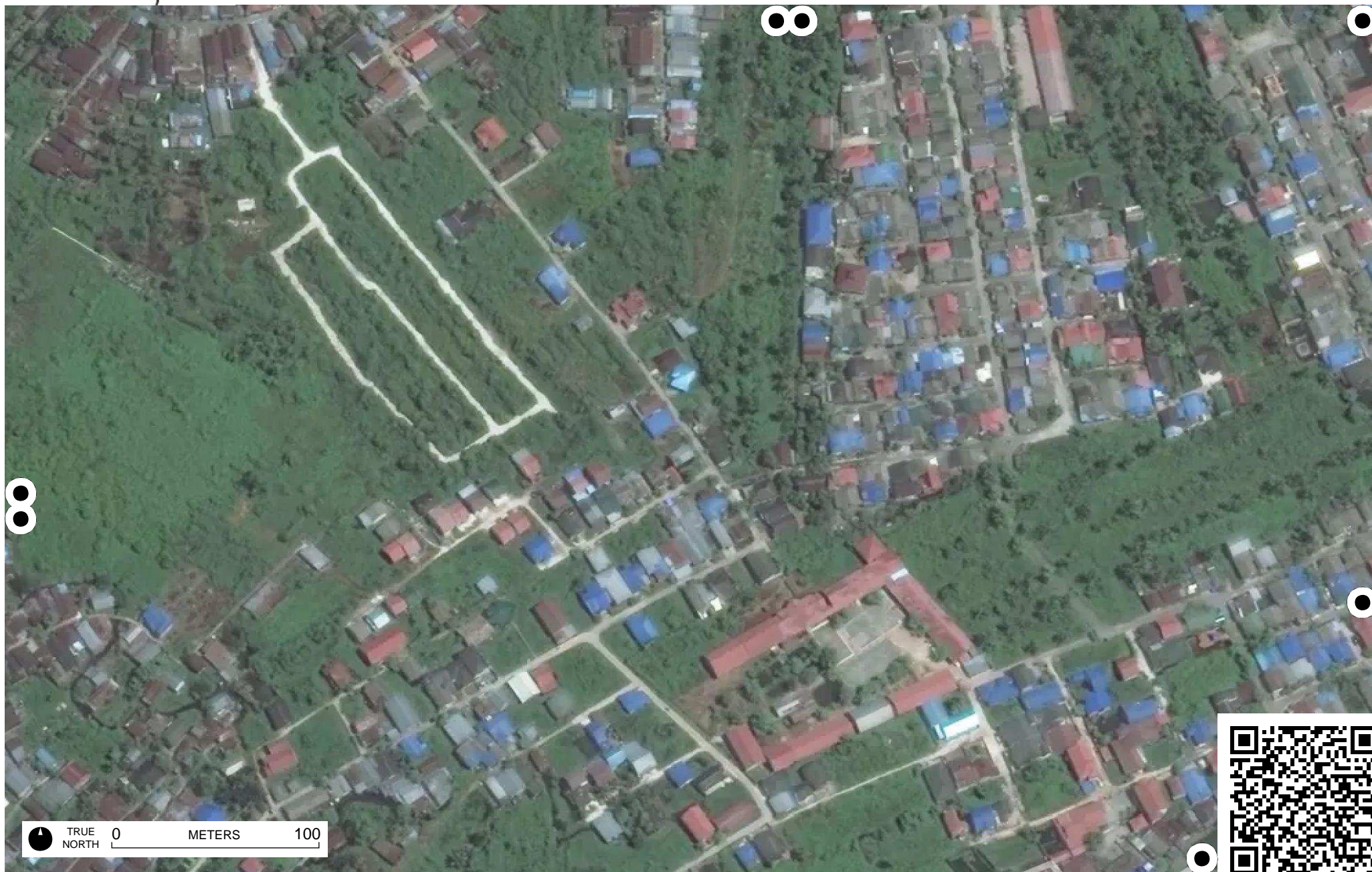


TRUE NORTH 0 METERS 100



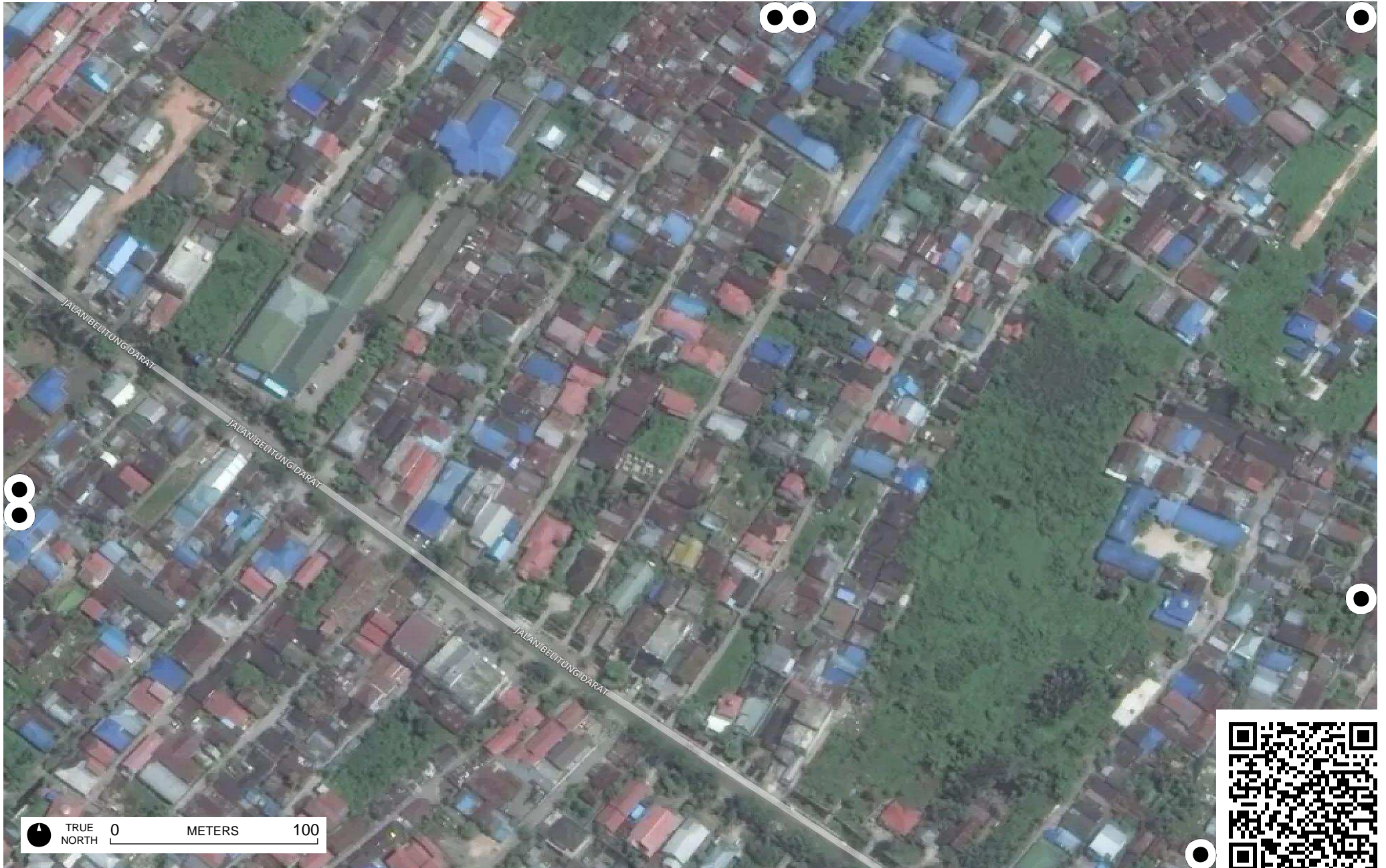


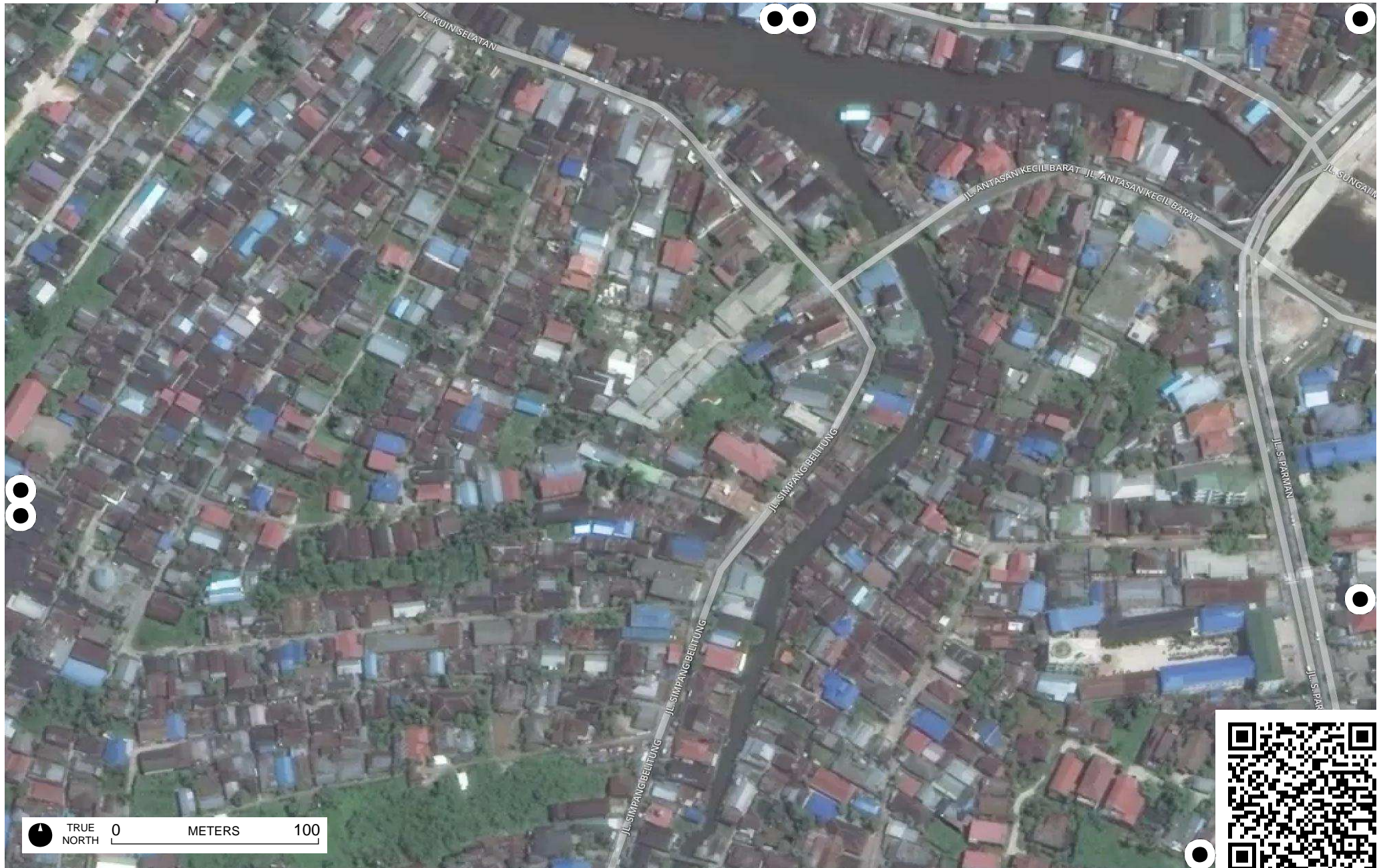


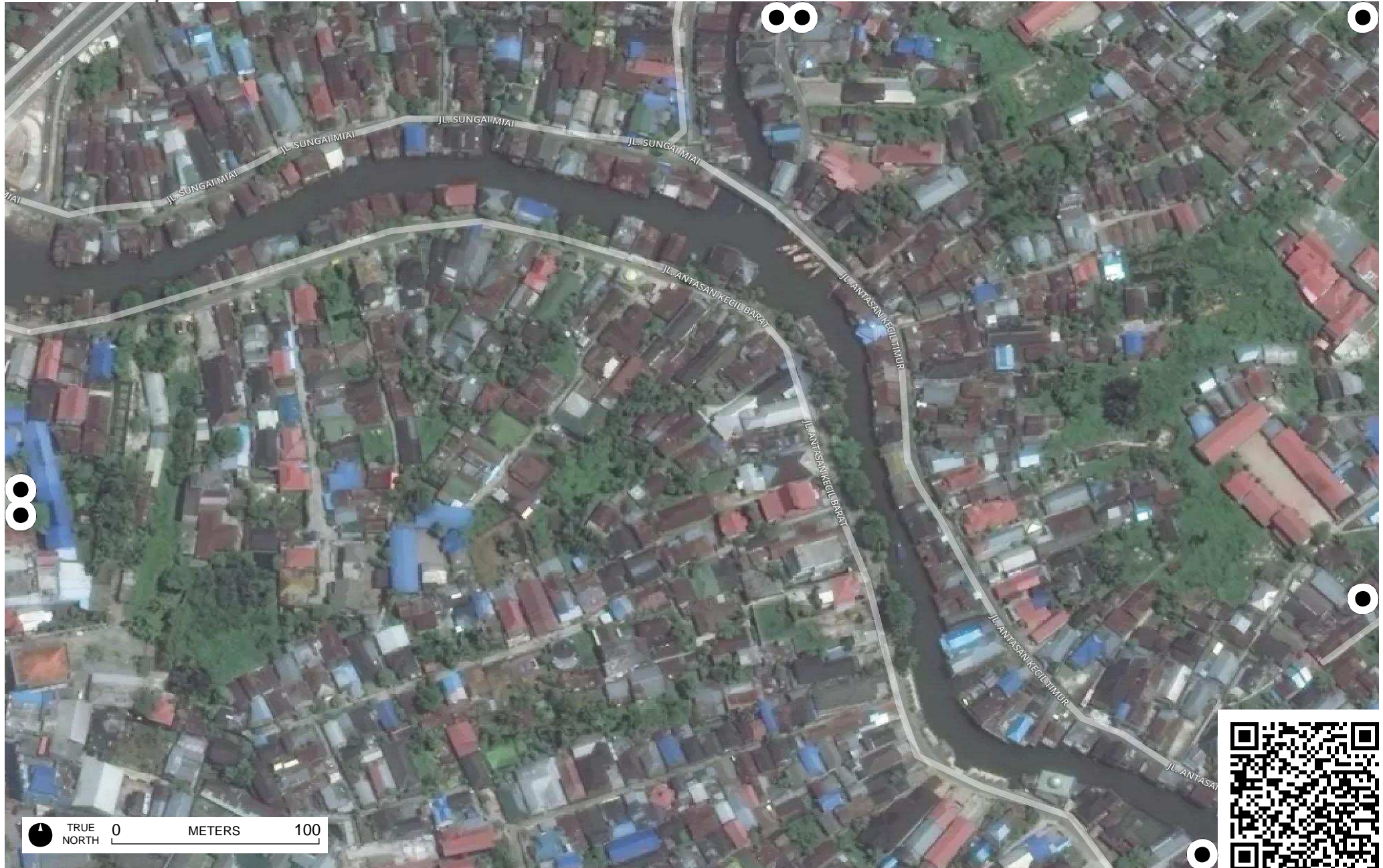


TRUE NORTH 0 METERS 100



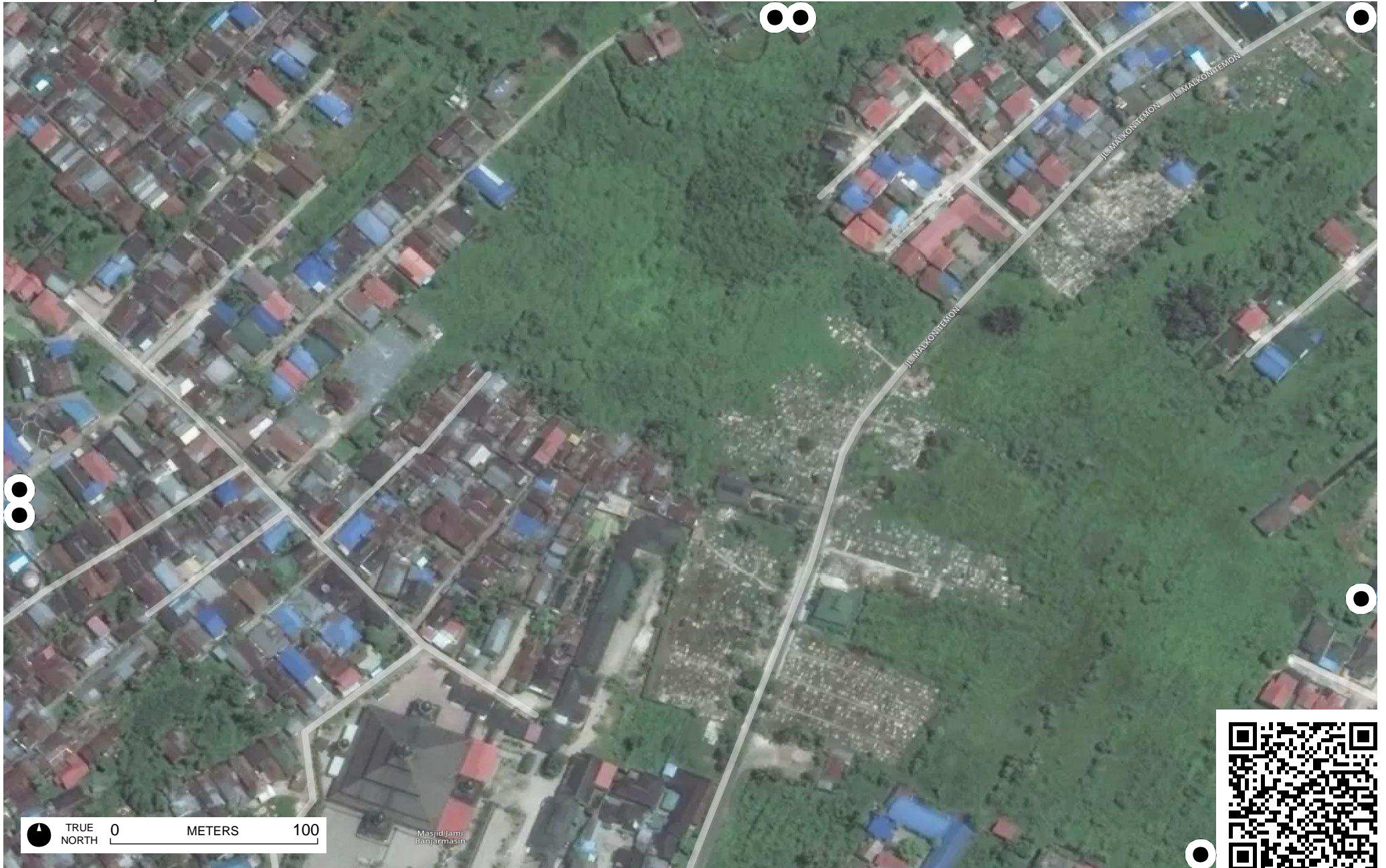


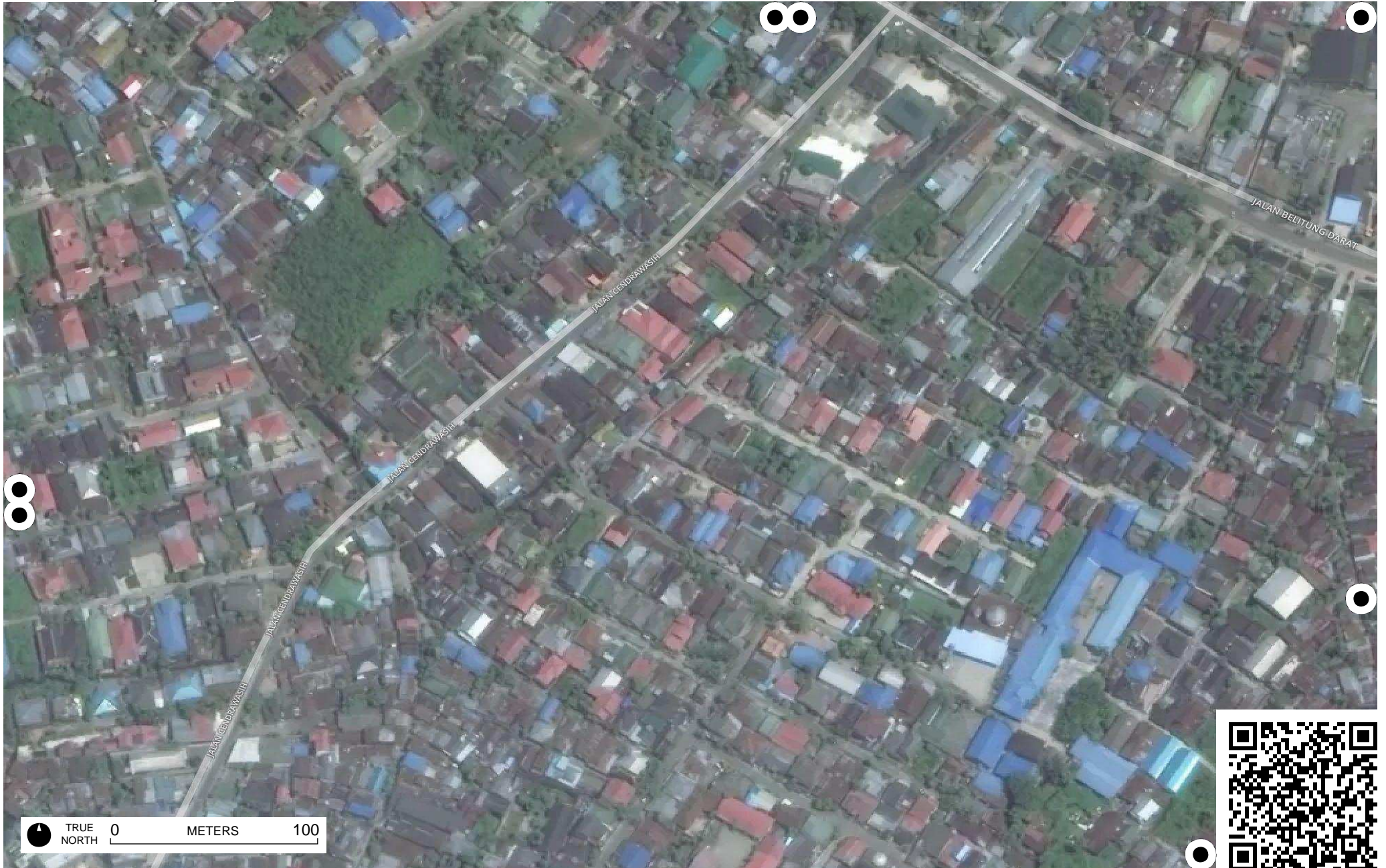


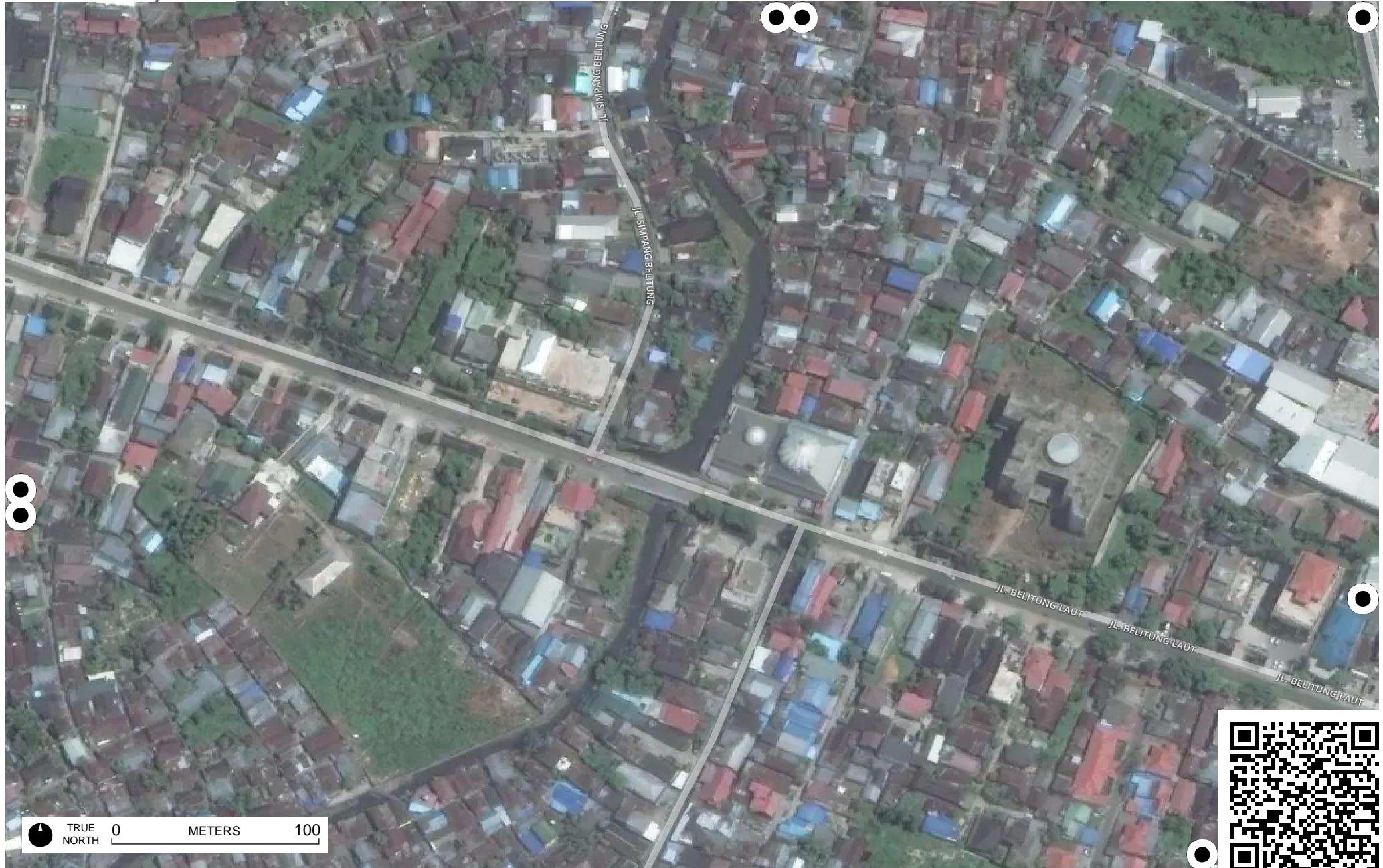


TRUE NORTH 0 METERS 100



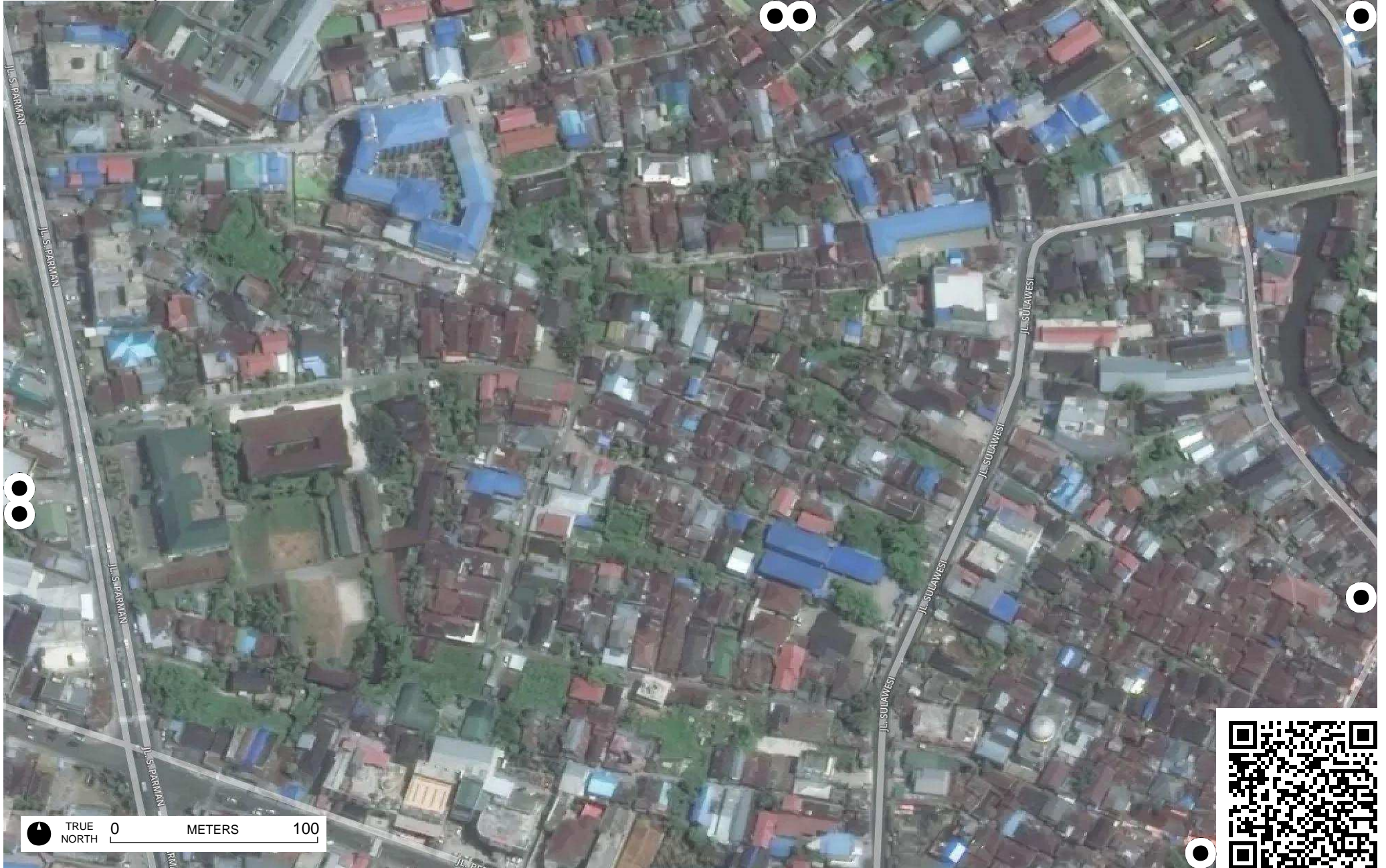






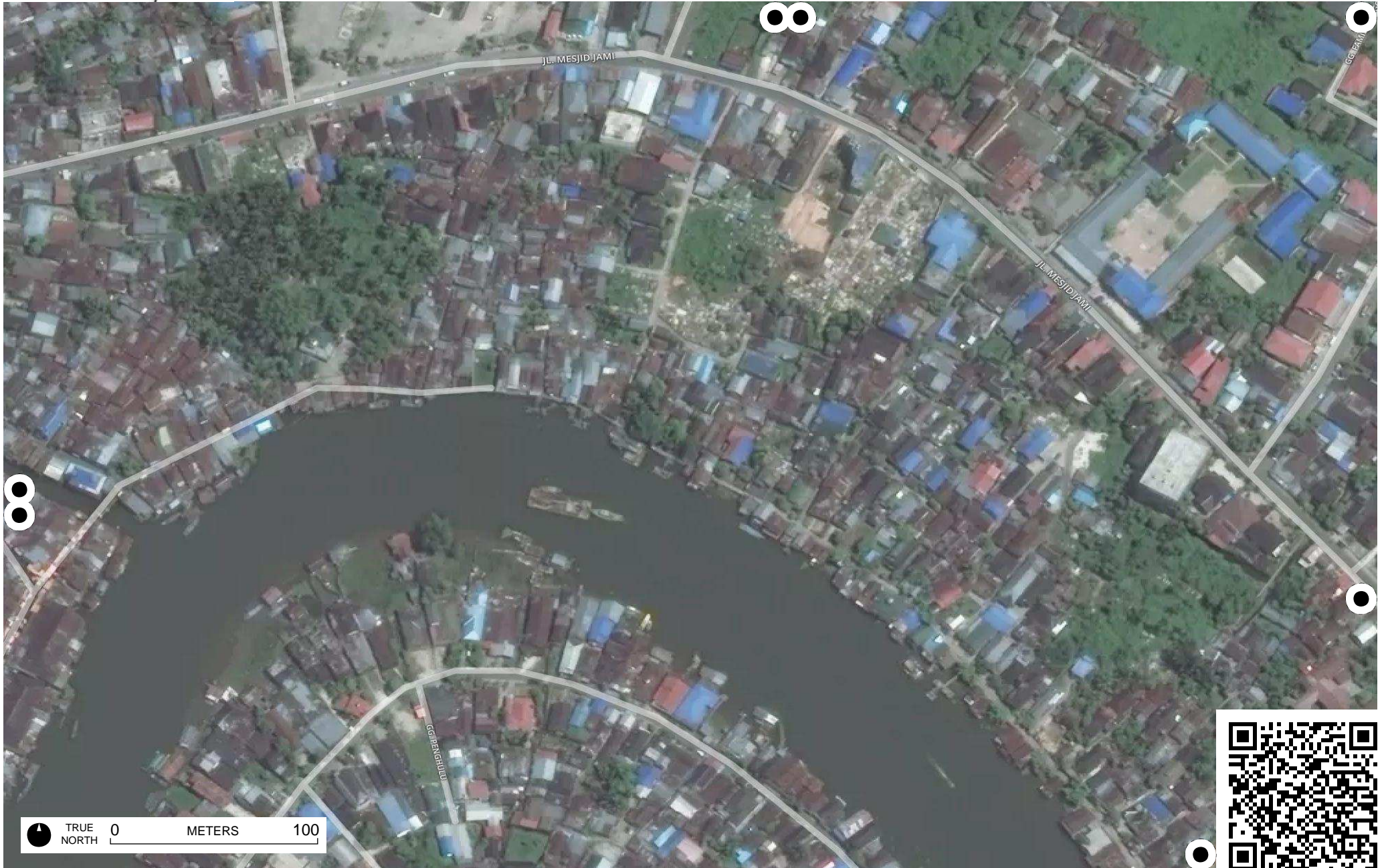
Field Papers

Sungai Miai - Pengeran - Pasar Lama
<http://fieldpapers.org/atlasses/2zi4pl4u/F3>



Field Papers

Sungai Mai - Pengeran - Pasar Lama
<http://fieldpapers.org/atlasses/2zi4pl4u/F4>



Field Papers

Sungai Mui - Pengeran - Pasar Lama
<http://fieldpapers.org/atlas/2zi4pl4u/G1>

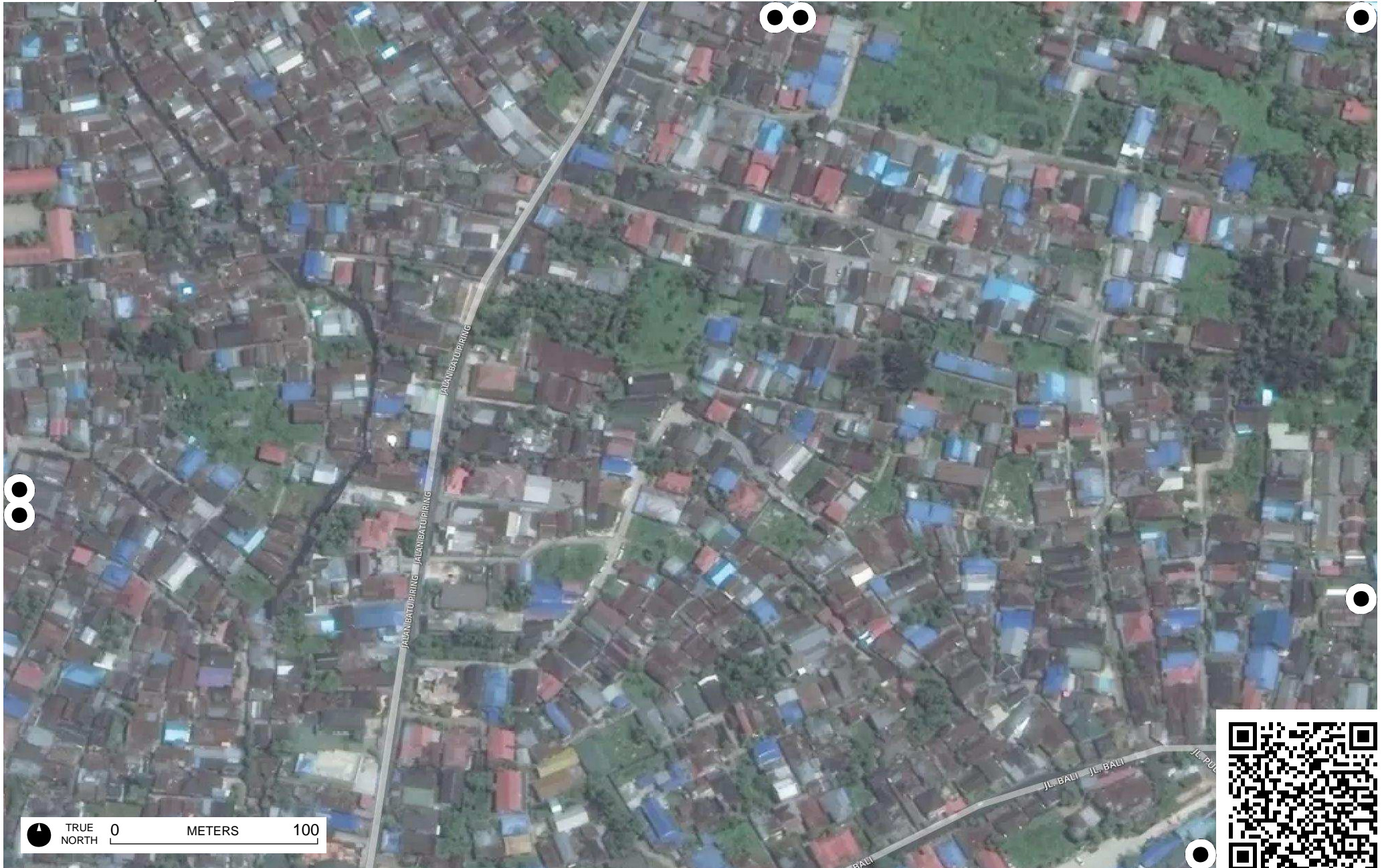


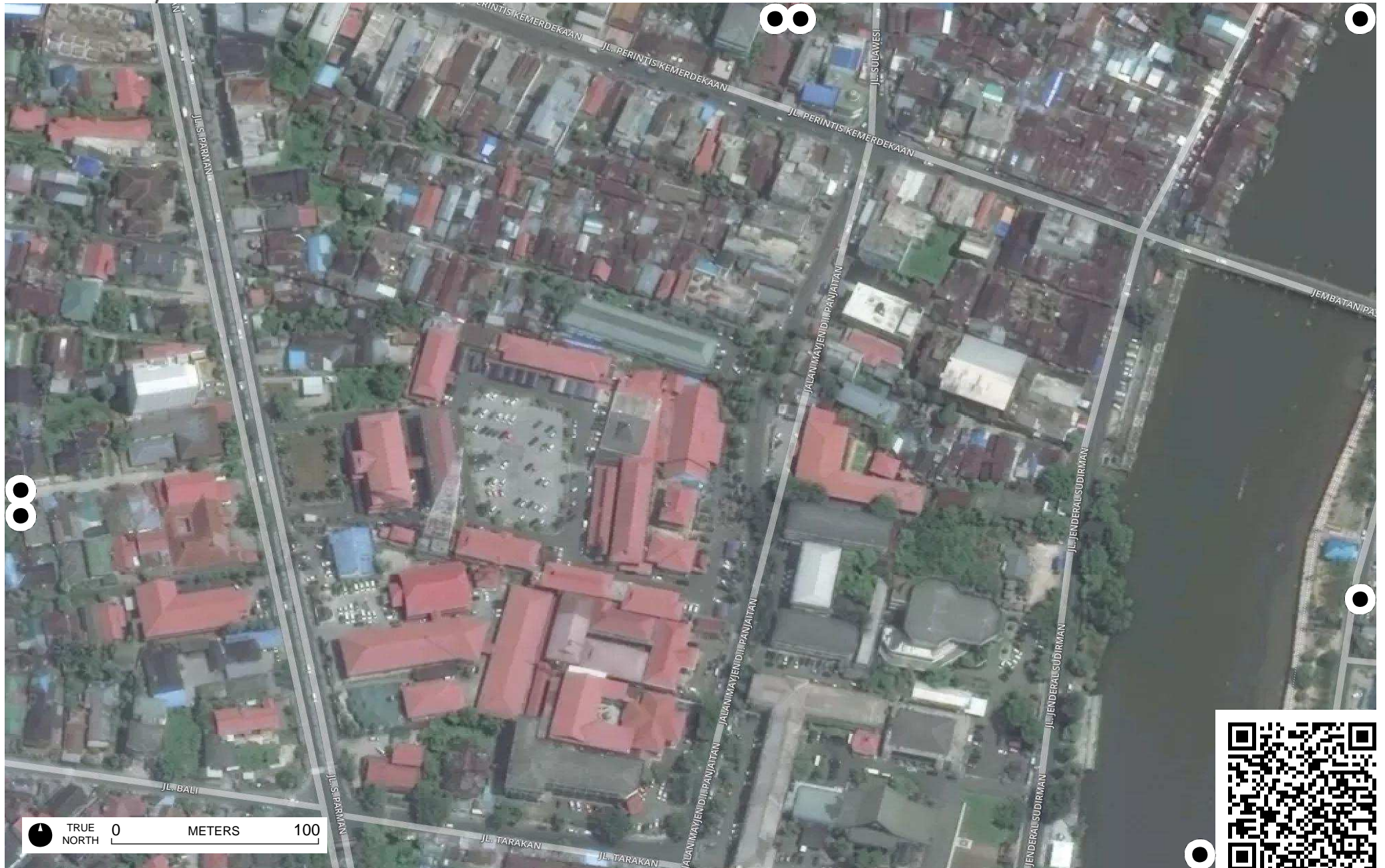
TRUE NORTH 0 METERS 100



Field Papers

Sungai Mai - Pengeran - Pasar Lama
<http://fieldpapers.org/atlasses/2zi4pl4u/G2>





Field Papers

Sungai Miai - Pengeran - Pasar Lama
<http://fieldpapers.org/atlasses/2zi4pl4u/G4>

