

The Role Of AI and its impacts In society



By: Clewdin De La Cruz

Rational

For my multi-modal translation, I was able to transform my research Informed essay into an Interactive slideshow by organizing all my related information based on AI and making it entertaining for my audience in order for them to engage and of course process my research more effectively. In the process of my slideshow, I made sure to take the key ideas discussed on my research informed essay and summarized it well enough in order to make my audience remember the information. This was fairly simple because when I summed my ideas up, it made it more simple to explain it overall without any issues. In addition, I used visuals and interactive elements to make the presentation more appealing. By combining images, transitions, and simplified explanations, I was able to keep my audience interested while still presenting accurate research. Turning my essay into a slideshow also helped me recognize the importance of alternative ways to present my information. Instead of overwhelming my audience with long paragraphs, I focused on presenting the most important points in a way that was both informative and engaging. Overall, this Multi Modal translation allowed me to communicate my research more effectively and strengthened my understanding of how presentation style can influence audience learning and participation.

What is AI and why is it crucial to understand?

- AI is a tool that focuses on creating machines that's capable of performing tasks that require humans. These tasks involve learning, problem solving, decision making, or even understanding different sorts of patterns
- AI is crucial to understand because as the world keeps evolving around us, we must acknowledge the potential changes being made in regards to Jobs being lost, environmental damages, social media content, and even mental health



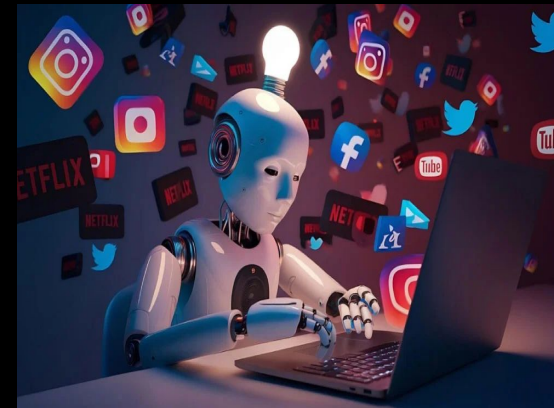
What are the significant impacts on employment?



- AI and its recent years, has taken over most of human Jobs and continues to serve as a tool that can help write, code, or analyze data
- In the source “The role of managerial risk-taking and AI-induced job insecurity”, Mai Nguyen states “employees tend to face a situation characterized by ambiguity of work and it is difficult to perceive an understanding of role, expectations and employment”. (Mai Nguyen, 2026).
- She emphasizes how people's working environments is changing how people perform at their jobs and may need to acquire new skills.

How is AI affecting the content we see on the media?

- AI is affecting what we see on the media because it recommends what content we see and watch
- In the source “The intrinsically linked future for human and AI interaction” Miller says, “through technology and social media AI recommends certain videos and posts to show to the public on platforms such as Instagram, Tiktok, ect and Humans look at what videos to approve in order for others to watch” (Miller A, 2019)
- This negatively impacts individuals because the content AI recommends can contain misleading information about any type of data it shows without humans taking much acknowledgement toward it



What is AI's role In Environment?



- AI plays a significant role on how it negatively affects our environment, this contains the amount of water usage, fossil fuels, nuclear and renewable energy. The number of energy usage keeps increasing the more AI is used.
- According to the source, “Environmental considerations of using AI”, Elizabeth highlights how Data center energy consumption is estimated to be about 6 percent of the US total electricity usage in 2026. In 2022, Google's data center consumed about 5 billion gallons of fresh water for cooling, increasing by 20 percent from 2021. (Elizabeth M, 2025).
- As we can see, AI has negative effects with the use of natural resources involving electricity and the supply of water.



What changes does AI make in people's mental health?

- AI has potential to act as a therapy tool in a way where it can influence someone's well being, AI is able to come up with methods how to manage anxiety, have empathic conversations with someone, or build a close relationship bond
- According to the source “The role of artificial intelligence in promoting kindness in society”, Ali clearly interprets that kind actions foster belonging, strengthen social bonds, and reduce isolation through volunteering, empathy, and prosocial behavior (Rowland, 2018; Yusuf, 2020)
- AI isn't just about technology, it can serve as a type of therapy tool for many individuals.



Blooket!

Just to see what you have learned so far, I have created an interactive game consisting of the 7 following questions! Use what you have learned so far about AI and answer it to the best of your abilities. The people who place top 1, 2 and 3 gets candy!

Q1: What is AI?

Q2: What is the #1 Resource used on AI?

Q3: what is a challenge that AI creates for employees?

Q4: Why is it crucial to understand the content AI gives off to the audience?

Q5: What is AIs role in mental health?

Q6: What is the most possible negative effect of AI in society?

Q7: Why should AI cause concern for individuals in the near future?

<https://dashboard.blooket.com/set/69f79dff3faa7ad75e9f2d59>

Conclusion

- **To sum it all up, we can see that AI has both positive but many more negative outcomes towards its use. It has become an essential part of modern life. Humans are able to shape, make decisions, solve problems, and interact with the world around them by controlling what AI is able to do such as suggesting what content to recommend on social media, what types of Jobs they take over, and how they can control environmental impacts.**