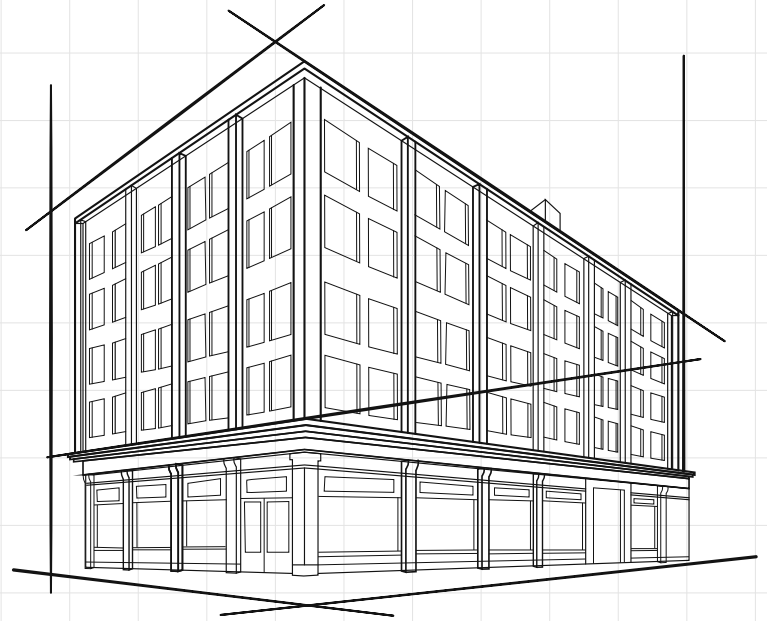


STUDENT UNION PROPOSAL

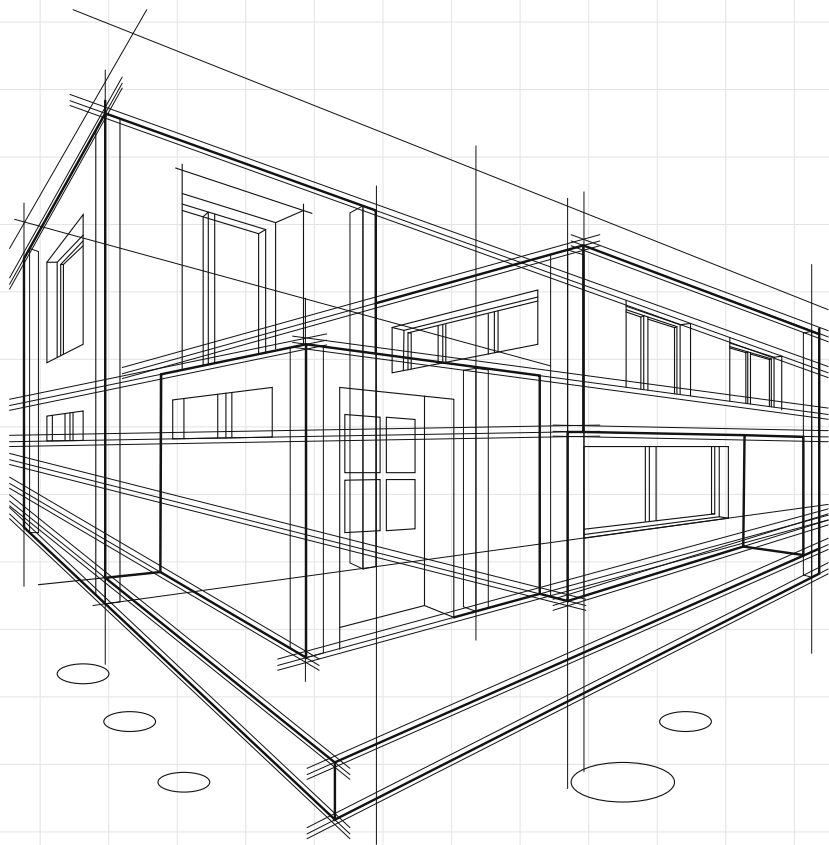
By: Tasnim Fahad, Yair Jimenez, and
Michael Duran



CONTENTS OF THIS TEMPLATE

<u>Introduction</u>	Get to know the minds behind the masterpiece
<u>Proposal</u>	Rundown of the Student Union
<u>Necessity</u>	Why do we even need it?
<u>Layout</u>	In-depth breakdown of the Student Union
<u>Costs and Benefits</u>	Expenditure and Explanations
<u>Conclusion and Q&A</u>	Final remarks and Questions

Presented By:
Group 6-7



1.

**WHO ARE
WE?**



**TASNIM
FAHAD**



YAIR
JIMENEZ



**MICHAEL
DURAN**

THE PROPOSAL

A NEW STUDENT
CENTER AT THE CITY
COLLEGE OF NEW
YORK, CITY LINK



City Link

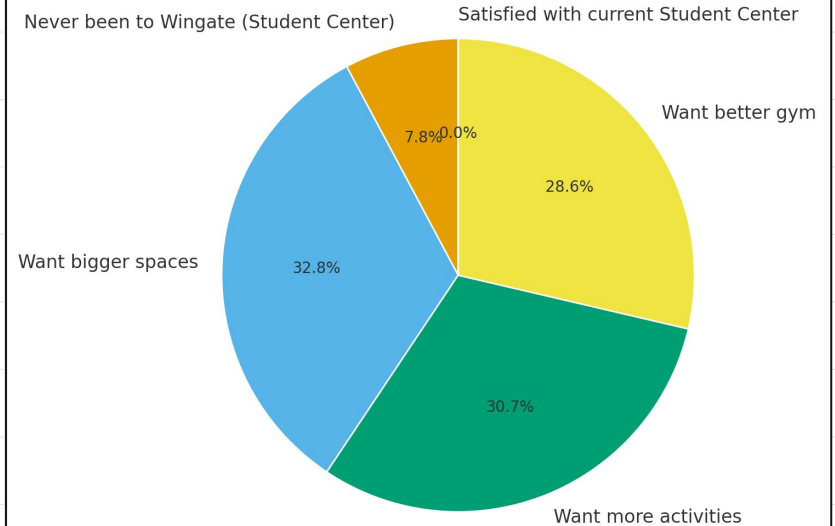
- Modern
- Immersive and Active
- 6000 sq ft and 4 floors with an open roof
- Full of state-of-the-art facilities and equipment.
- Serves students



STUDENT SURVEY

highlights the strong desire for bigger spaces, more activities, and a better gym, with no respondents satisfied with the current setup.

Student Survey on Wingate Student Center (84 Responses)

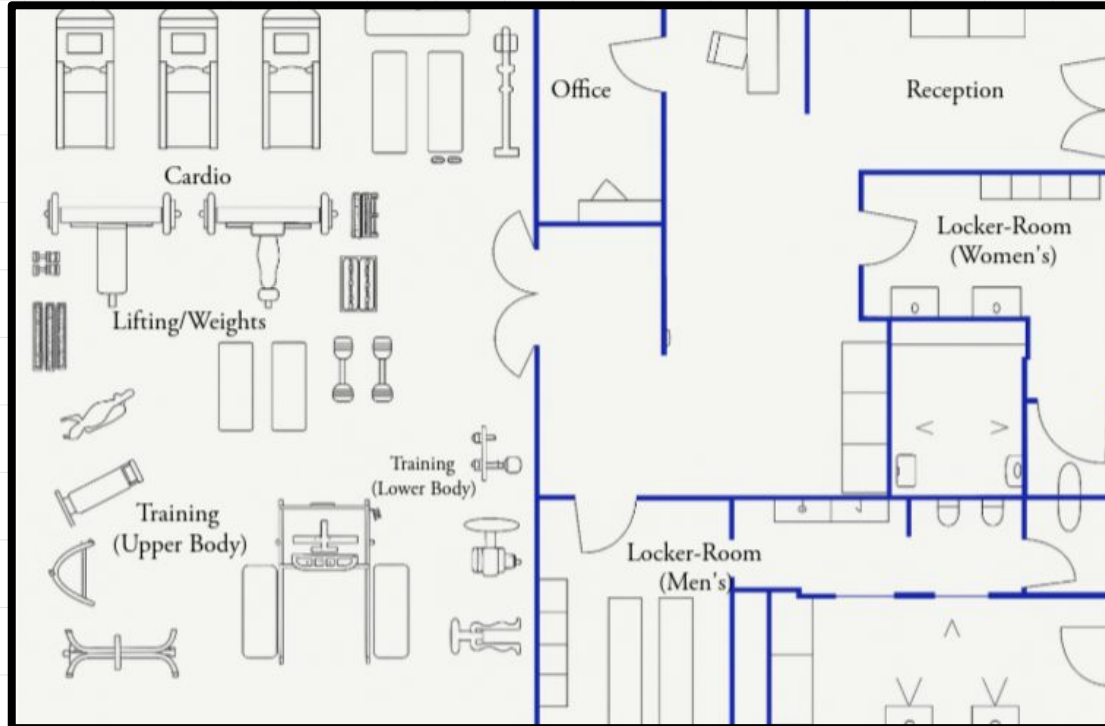


Floor 1: Gym

- Free gym for all
- Accommodate cardio and strength training
- Will have an energy-efficient HVAC and LED system



1st Floor plan: Gym



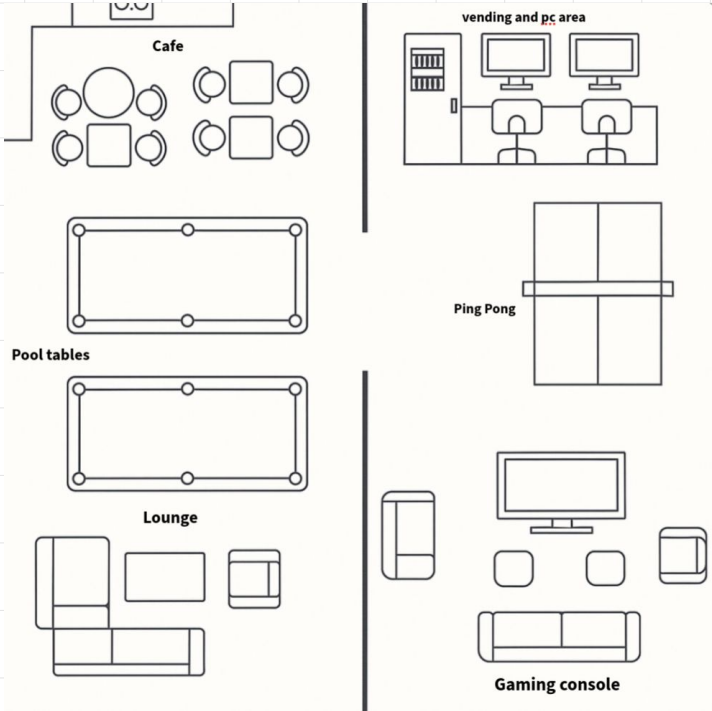
Floor 2: Cafe & gaming zone

- An area whose main points is to be flexible and comfortable and where students socialize
- Will have a cafe like, like, Starbucks, Dunkin or a student-run cafe



- A recreation area with pool tables, ping-pong tables, and a gaming zone with big screens and cozy seating.
- Full of natural lighting around the cafe and LED lighting for the gaming zone, for an arcade vibe.

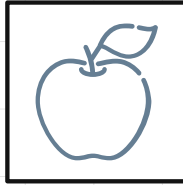
2nd Floor Plan: Cafe & Gaming zone



NECESSITIES (ACTION PLAN)



FLOOR ONE



→Our ROI is Outstanding (gym/fitness center).

- Why we need it: Students who use campus facilities frequently show a retainment of 5% and 8% higher compared to other students

→ Health and Mind

- Increase overall student health mentally and physically

→Atmosphere

- No more smelly gym air. The center design is mandatory to meet high air quality standards

FLOOR TWO

→The Community & Wellness hub (Game Room & Café)

- Mental Health Stabilizer: Nearly 7 out of 10 students talk to a friend first about mental health struggles. This center leverages that peer support. With hands-on support

→The Comfort Gap (The Current Failure)

- The existing game room is small, limited in games, and forces students to bring their own gear (ping pong, pool) to even play. This lack of proper facilities confirms that existing communal areas

→The Inclusion of Student Fees:

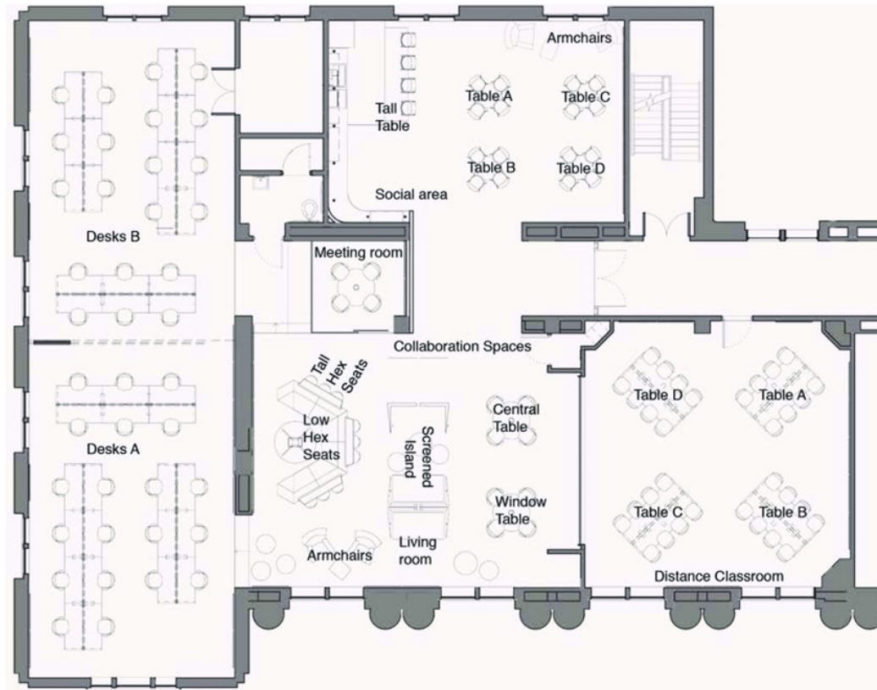
- Our greatest lever is commitment. A small annual student fee (\$20) signals strong student interest; this is the key to unlocking millions in matching donor funds.

Floor 3: Study Hall

- The third floor of the City Link will offer an area student can lock in.
- Will have a computer room for student who don't have computer
- Study rooms for groups/individuals that will be soundproof to help student concentrate
- Will have comfortable chairs and power outlets.

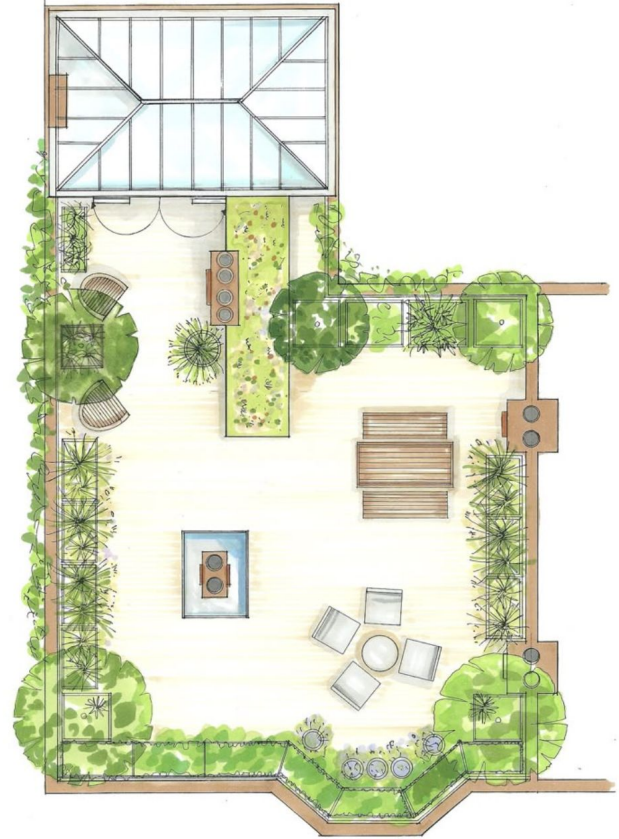


Floor plan 3: Study Hall



Floor 4: Art and crafts with Rooftop

- Will double as a both arts-and-crafts studios and an open rooftop terrace
- The art space will have worktables, washbasins, and storage cabinets for tools and materials.
- Just outside of the arts-and-crafts studios area you will be welcomed by the lush greenery.
- An area where students can garden while also being perfect for student events, performances, and social meetings.

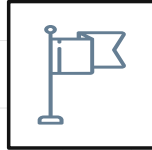




NECESSITIES (ACTION PLAN)



FLOOR THREE



→The Academic Focuser (Study Lounge & Online Learning)

- Maximizing Study Time & Productivity.

The Space Limitation: While the Library has designated areas (4th/5th for quiet; 2nd/3rd for group), there is limited dedicated space for focusing

→The Focus Solution

- Modern study spaces must include soundproof pods to boost concentration and productivity by blocking noise Especially for virtual classes

→ The modern edge

- Investing in a more modern furniture significantly improves student concentration by reducing physical discomfort and attention.

→ Design priority;

- Must feature robust Wi-Fi and power systems to fully support the shift to hybrid learning and online classes.

FLOOR FOUR

→The Creative & Environmental Leadership hub (Arts & Terrace)

- Filling a Critical Gap in Student Life: We currently have no dedicated arts-and-crafts facilities and no usable rooftop terrace.This facility closes that gap by offering essential support.

→Creative wellness

- Arts based work are proven to improve mental health, social connections, and creativity.

→LEED SILVER

- Targeting LEED Silver Certification Demonstrates our institutional leadership and minimizes long-term operational costs by incorporating energy-efficient windows and smart controls.

→Rooftop Benefit:

- The terrace provides aesthetic value and a flexible outdoor space for events

Cost and Benefits

- The estimated total cost of this new and improved student center will be of **\$20-25** million USD,
- The benefits will be that the students will have be able to enjoy their campus and not be ashamed
- A student center that can be equal to it peers like NYU, Columbia, and St. John's,

Item	Estimated Cost (USD)
Floor 1 – Gym and Fitness Center	
Structural build-out, reinforced slab, HVAC zoning	2.6 M – 2.8 M
High-end cardio and strength equipment	1.1 M – 1.2 M
Locker rooms (showers, plumbing, tile, drainage)	1.0 M – 1.1 M
Lighting, reception, and security systems	0.5 M – 0.6 M
Subtotal – Floor 1	5.2 M – 5.7 M
Floor 2 – Café and Recreation Lounge	
Café construction (food-service build-out, plumbing, venting)	1.5 M – 1.6 M
Pool/ping-pong tables and gaming equipment	0.3 M – 0.35M
Lounge furniture and finishes	0.6 M – 0.7 M
Subtotal – Floor 2	2.9 M – 3.2 M

Item	Cost (USD)
Floor 3 – Study Lounge and Online Learning Rooms	
Partition walls, soundproofing, and acoustics	0,8 M – 0,9 M
Study pods and furniture	0,6 M – 0,7 M
Technology (PCs, Wi-Fi, AV equipment)	0,5 M – 0,5 M
Lighting and HVAC adjustments for quiet zones	0,4 M – 0,4 M
Subtotal – Floor 3	2,3 M – 5,7M
Floor 4 – Arts and Rooftop Terrace	
Structural reinforcement and roof deck construction	3,0 M – 3,1 M
Arts studio fixtures (sinks, tables, storage)	0,7 M – 0,75M
Safety railings, lighting, and outdoor furniture	0,6 M – 0,65M
Landscaping and weatherproof materials	0,5 M – 0,55M
Subtotal – Floor 4	4,8 M – 5,0M
Total Estimated Project Cost (NYC Adjusted)	

BENEFITS

ENHANCED STUDENT WELLNESS

A DEDICATED GYM AND RELAXING LOUNGES PROMOTE PHYSICAL AND MENTAL HEALTH, REDUCING STRESS AND BUILDING HEALTHY HABITS.

INCREASED ENGAGEMENT



CENTRALIZED SOCIAL SPACES CREATE A STRONGER CAMPUS COMMUNITY, CONNECTION, AND A GREATER SENSE OF BELONGING.

IMPROVED RETENTION

DATA SHOWS A STRONG LINK BETWEEN CAMPUS ENGAGEMENT AND STUDENT RETENTION, LEADING TO BETTER ACADEMIC AND PERSONAL OUTCOMES.

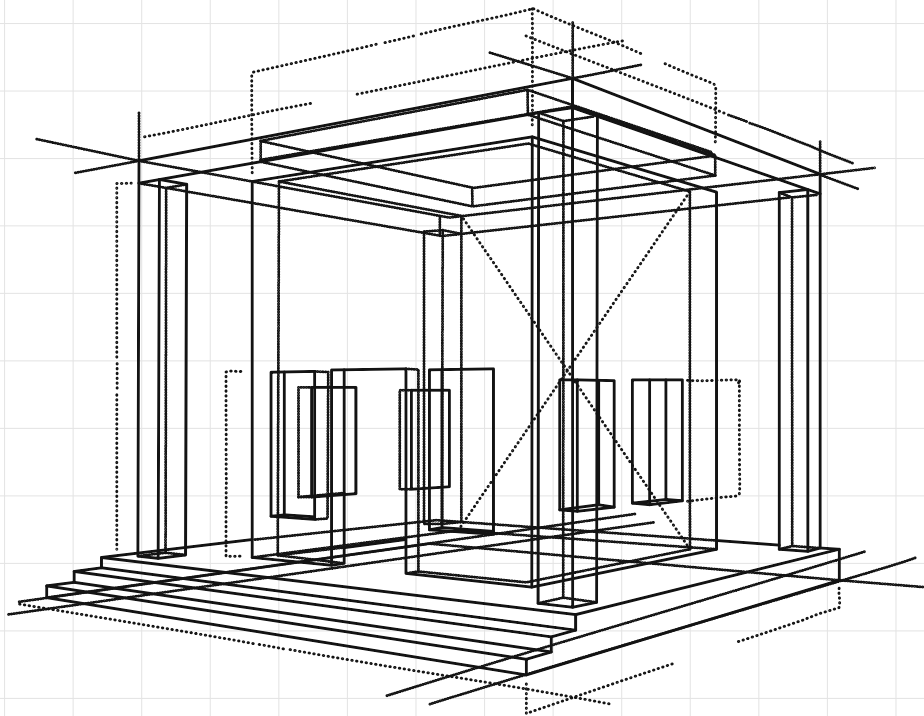
\$20,000,000

Budget for the new products/services of the company

CONCLUSION

The construction of a new student center is an absolute necessity; our plan in particular goes above and beyond to ensure long-term student satisfaction.

And what is a student center if students don't like it, i.e., (Wingate)



THANKS!

Curiosity never killed that
cat. ASK AWAY!!

TEAM 6-7