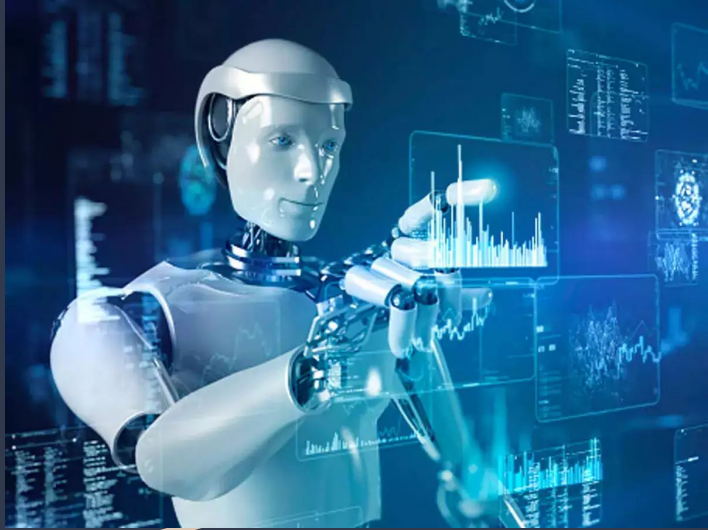


AI Presentation

By: Sami Mamun, Gwenith Malsom, Luis Fiallos



What is AI?



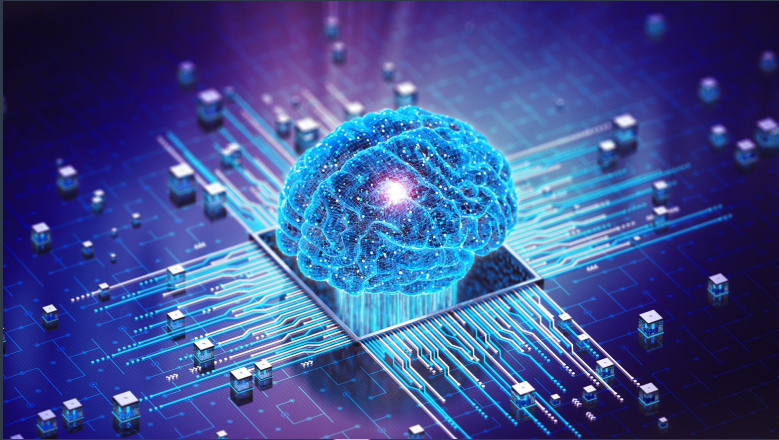
Artificial intelligence is a set of technologies that allow machines and computer programs to mimic human intelligence. AI systems learn from experience, identify patterns, and make decisions based on large volumes of data.

What is an LLM?



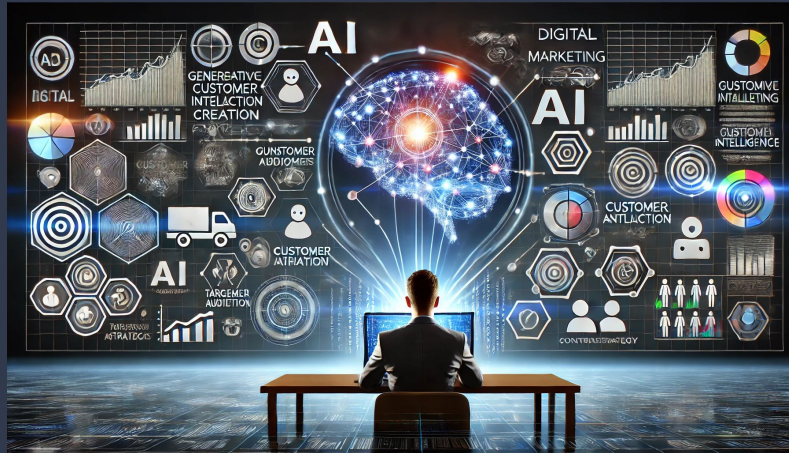
In AI, LLM stands for Large Language Model. (LLM) has been fed with enough examples to be able to interpret and recognize human language or other complex information. (LLM) gathers all of its information from the internet. They are trained on huge sets of data, hence the name “large”.

Does AI know anything?



AI models require both quantity and quality of data. The more diverse and well-structured the dataset, the better AI can understand and respond to queries and generate accurate insights. High-quality data leads to more accurate AI outputs. Poor-quality data, on the other hand, can introduce biases and inaccuracies into AI outputs. AI models undergo multiple iterations of learning, where data is refined and optimized for accuracy.

The use of AI in Marketing

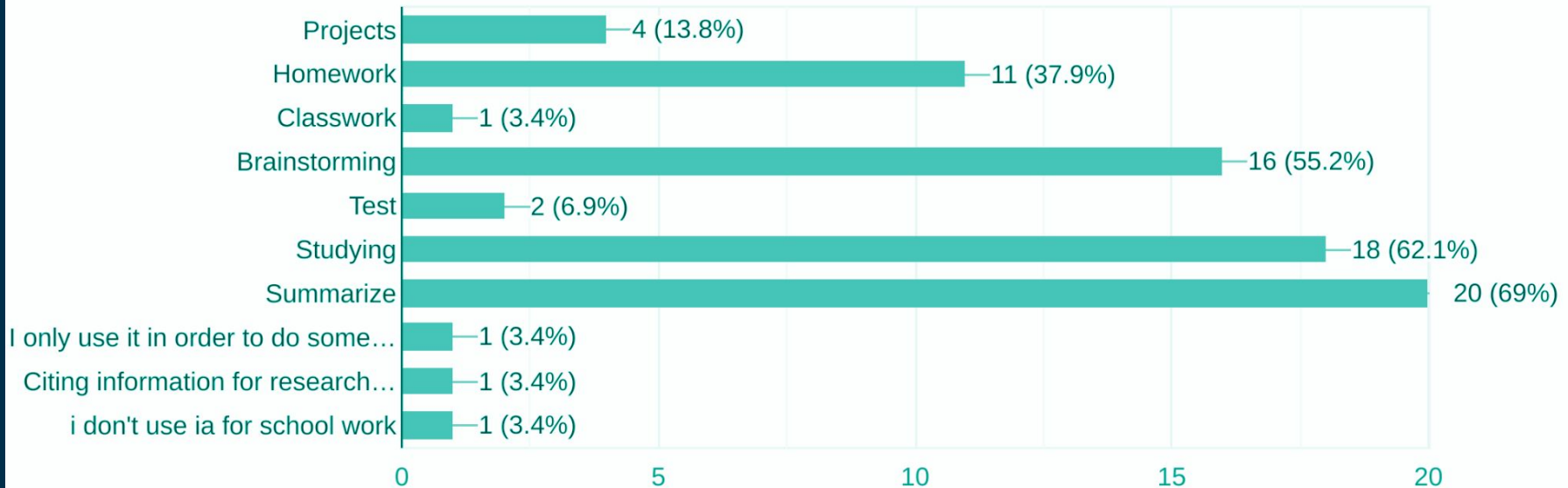


AI in marketing helps companies to understand their audience better by processing huge datasets see patterns that would be impossible for humans to do. AI helps companies with personalized marketing by recommending products to user preference. AI helps companies with AI chatbots providing 24/7 customer service. AI also helps with company to target ads to the right audience.

AI use in academic work

3. What do you use AI for in school work?

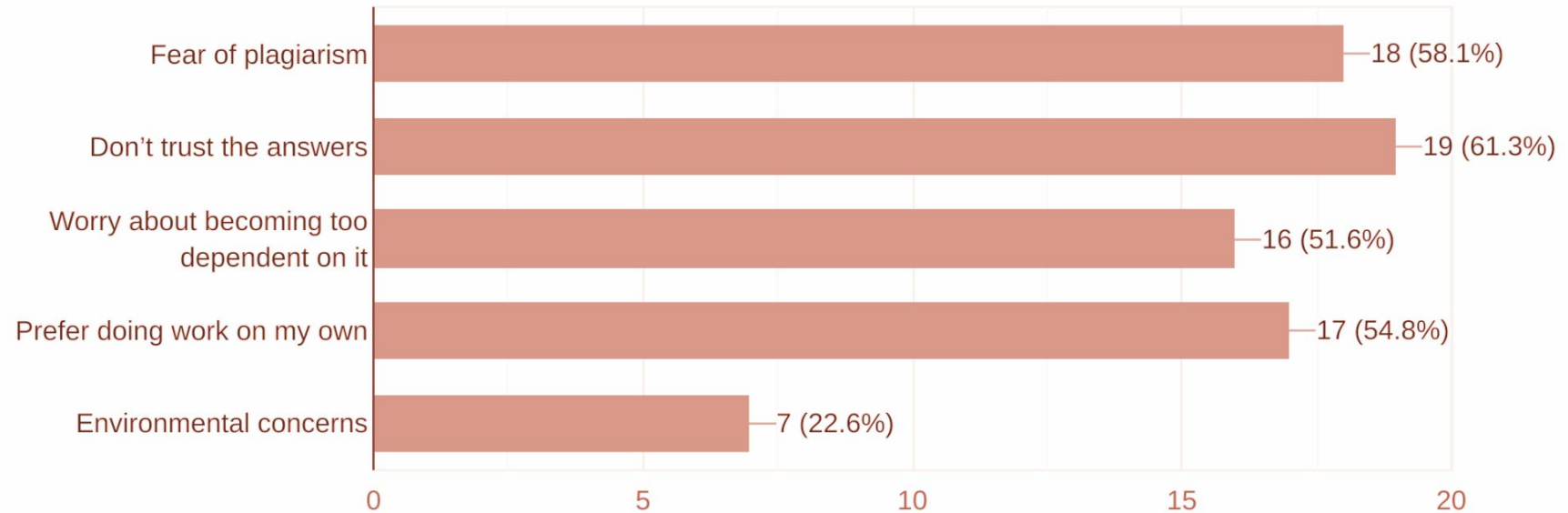
29 responses



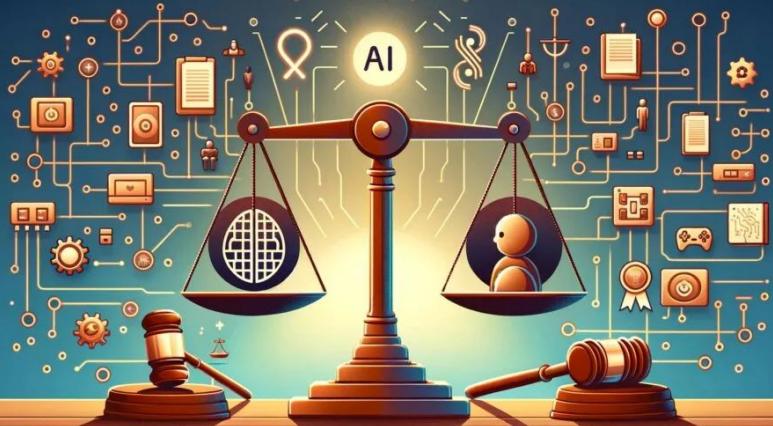
Problems with use of AI in academic work

4. What reasons might make you avoid using AI?

31 responses



What is ethical AI use?



An ethical way to use AI in the academic setting could be utilizing the technology to summarize writing. By copy and pasting text, or providing the article name to AI will the provide a summarization of the writing. This can allow students to save reading time. Another ethical practice is using AI to brainstorm and organize ideas. This can help students think creatively without copying the context AI generates.