

A Space for Growth: Analyzing the Importance of a Student Center



Figure 1: A sketch of the reimagined 'Howard E Willie Center'

April 7, 2025

The Dam Good Beavers:

Alicja Zajac

Yelixa Almonte-Matias

Edras Casia Rojas

Perla Torres

Introduction

Have you ever wondered why so many college campuses put substantial effort towards maintaining a thriving student center? The reasoning is quite simple. Student centers have been known to bring student life together fostering communication, creativity, and participation, while also providing personal and academic growth to its students. Not only is this space useful by providing areas for study and socialization, but it also provides necessary resources for a positive student life including counseling, career support, and guidance. Student centers have been at the center of student life for decades and continue to prove to be an essential component of the student experience.

The importance of a new student center is represented within our campus community as many students are dissatisfied with its current state and are hoping for improvements. When the students were asked how often they use the current Wingate student center an overwhelming 42% stated that they never use it, 28% stated that they rarely use it, 9% stated that they use it on a monthly basis, 13% stated that they use it on a weekly basis, and only 8% use it on a daily basis (see figure 1). In order to gather this information we conducted a survey of 100 CCNY students (see figure 11) asking them various questions regarding the state of the current student center, as well as what other amenities they would like when constructing a new one. As seen above, this lack of attendance at the current student center means that there are certainly a lot of necessary changes in order to get the monthly, weekly, and daily percentages up while lowering the percentage of students who never use it. In order to understand what changes the students would like to see in this project we asked them in an open ended question what they wanted in the new student center or what they believed was missing from the current one. From these results we gathered that students desperately need a place to nap on campus as 26 students

repeated that they would like to see a nap room, to follow 23 students repeated that they would like commuter lockers to place their belongings in during the time they are on campus, 19 students repeated that they wanted a student lounge with one student asking for comfy seating, 16 students repeating that they wanted a game room, 7 students repeating a desire for access to food with one person asking for a kitchen, and 6 students repeated their want for study rooms (see figure 12). We even got a few responses stating that students have no idea what they would even want in a new student center as they have never been to one. Here is one student's opinion regarding this issue, "I didn't know this space was accessible to me" (anonymous student). 4 different students also mentioned that they hope to see reservable rooms, resources, entertainment, and charging ports within the new student center which we addressed later in the survey. Our next question was what events or activities they would like to see held at the student center where we only received 98 responses as this question was optional. The students had a high interest in having various types of entertainment available including movies, concerts, as well as performances with 87.8% popularity, the data also shows that they would like to hold study sessions in various different subjects with 59.2% popularity, additionally having workshops accessible for student use held 57.1% popularity, and finally in the other category where students could create their own response 1 person asked for opportunities for volunteering holding 1% of popularity (see figure 13). As a result of this data, we decided to include spaces within our design that will appeal to this desire for a place to hang out with friends while also having plenty of space to be the scholars that CCNY students are. For our next question, we focused on technology asking students what was most important to them, receiving 99 responses as it was also an optional question. The results showed that 91.9% valued Wi-Fi, 80.8% valued charging stations, 64.6% valued computer labs, 61.6% valued printing services, and in the other

section where students could create their own responses 1 student asked for a borrowing center (1%), 1 student asked us to definitely do Wi-Fi (1%), and one student asked for video games (1%) (see figure 14). Even though most of these services are already provided within the school, we wanted to see if students would like to have one common place where they can access these amenities, the same goes for our following question of if they would like any services provided where we received 94 responses as it was an optional question. This data showed that 76.6% of students would like career services, 70.2% would like Academic resources, 59.6% would like mental health resources, 52.1% would like health resources, and in the other section where students could create their own responses 1 student vouched for coffee services making up 1.1% of the data, 1 student vouched for food services making up 1.1% of the data, and 1 student vouched for anything to help relieve stress also making up for 1.1% of the data (see figure 15). We then wanted to figure out if students were even interested in having reservable meeting rooms for club executive board meetings, we ended up collecting 99 responses as this question was optional to answer. The most popular vote being 62.6% stating yes this space should be available in the student center, 27.3% stating maybe it should be available, 6.1% stating that this is not applicable to them, and only 4% stating no this space should not exist (see figure 16). Now that we understood what CCNY students are looking for within a student center it was time to figure out its logistics including time and place. When we had first begun the project we had multiple possible locations for the student center, so we decided to turn to the masses in order to determine the most effective place to put it according to the student body. What resulted from these results is that students did not want the building to be built on the terrace located in between Wingate hall and Baskerville hall with only 1% of students voting for it, coming in next students did not want it in the Hoffman student center with only 1% of students supporting this

location, then we only received 2.1% of support for putting it in the NAC building, we also saw some more support for its placement being in the basement of the Wingate building receiving 12.5% favorability, then we have the field near the Anne Spitzer Architecture building coming in second place with 25% of students wanting this location, and finally in first place with 58.3% of students stating that adding floors on top of the Willie E (see figure 17). Howard Administration building would be the best possible spot to add a student center too. In order to determine the hours of operation for the new building we also asked students what time the student center should be open for students to access, receiving a total of 98 responses as this question was optional. The results came back with an almost even split between two choices and a pretty unfavorable outcome for the hours of 7:00am-10:00pm Monday-Friday which only received 1% favorability, whereas 10:00am-10:00pm held 48% favorability cutting it very close to the top response of 10:00am-8:00pm on Monday-Thursday and 10:00am-4:00pm on Fridays receiving 51% favorability (see figure 18). Lastly we finished off the survey by asking if students had any final thoughts they would like to share regarding the construction of a brand new student center and received many responses stating that they had nothing else to add, but a few responses where students had stated that they suggest advertising the space more and that they hope this space will actually be accomplished as it would provide a lot for the community (see figure 19). All in all, this statistical data was very helpful for constructing our new design for the student center as we now had an idea of what our campus community desires out of this space.

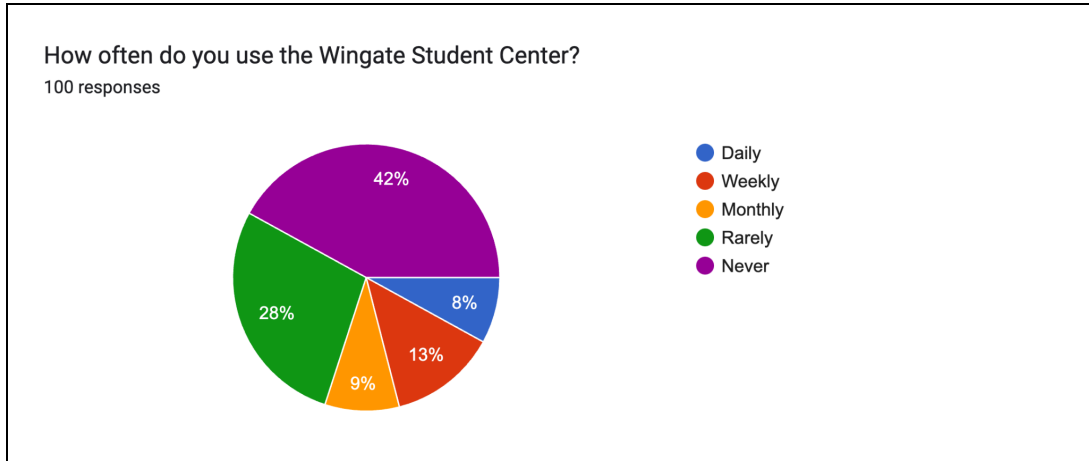


Figure 2: Total amount of responses from survey

When deciding the design of our new and improved student center, we took inspiration from many different colleges and incorporated the aspects that students held the most satisfaction with. The Columbia student center is an example of one space we drew inspiration from with reservable rooms for performances or meetings, student accessible lockers, counseling services focusing on mental health, student lounges with plenty of comfortable seating, vending machines for a quick snack, and even a cafe with a wide variety of food or drinks (Alfred J. Lerner Hall). These features present within Columbia universities students center greatly add to the thriving student life on campus making them prime motivators on what we wanted to include in the design of our own student center. We also focussed on certain aspects of the BYU's student center as they have been dedicated to inspire students in learning, creating lasting connections, and cultivate the talents and skills of their students (Wilkinson Student Center). One aspect that we incorporated into our own plan is including the campus store within the student center in order to uplift school spirit. We also drew inspiration from their garden court which provides students with a relaxing retreat into nature in such a bustling city. Like most student centers they also provide a variety of services for career support, health support, mental support, and more.

All of these aspects are what help produce a thriving campus environment which is what we hope to do for our CCNY students.



Figure 3: BYU student center images

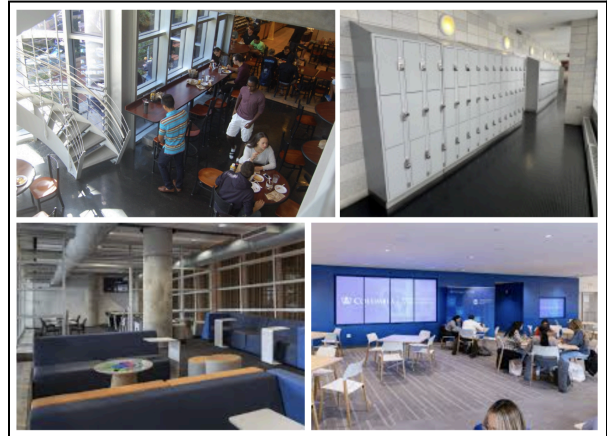


Figure 4: Columbia student center images

Action Plan:

The new student center will be a vibrant, multi-functional space designed to enhance student life by integrating essential services, recreation, and relaxation areas. Located in a renovated and expanded Howard E. Wille Administration Building, the center will feature three new floors, each catering to different student needs. A separate lounge entrance will lead to these new floors. The building features an oval-shaped front for aesthetic appeal (and to represent unity), with slightly openable windows for some fresh air. The open and welcoming design, filled with plenty of windows and natural light, will create an inviting and functional environment, making it a brand new heart for the CCNY campus community.

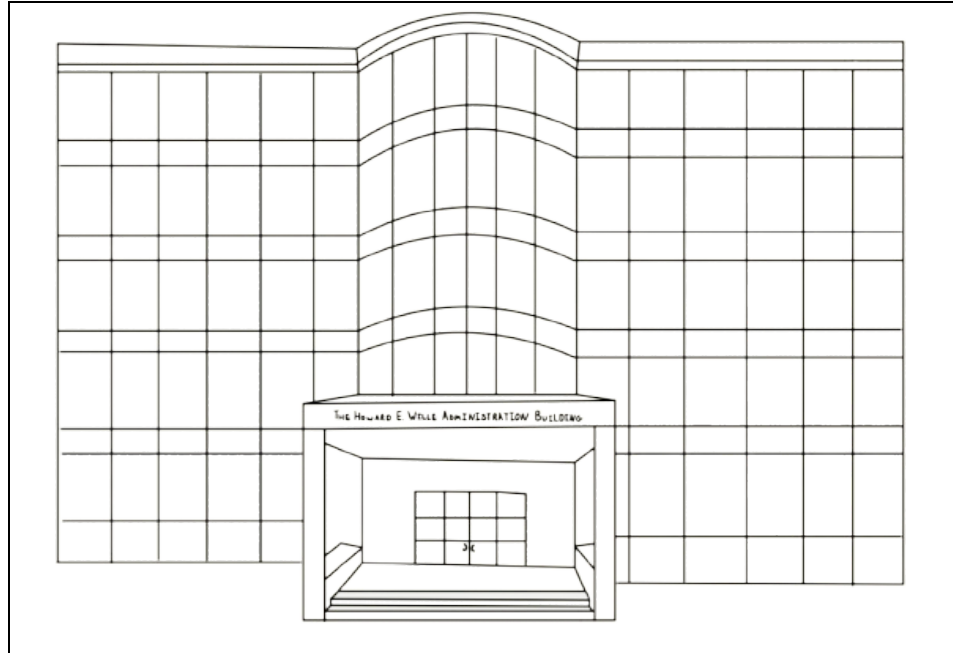


Figure 5: Outline of the “Howard E. Wille Student Admin Center”.

First (technically, fourth) Floor:

The first floor of the new student center is going to be the go-to spot for students to chill, connect, and get what they need. The open layout will make the space feel bright and welcoming, with plenty of natural light, cozy seating, and areas set up for different activities.

Right in the middle, there’ll be a big, semi-circle couch facing a TV. A spot perfect for relaxing, watching events, or just catching up on shows. Around it, you’ll find lounges with comfy chairs, study tables, and charging outlets, so whether you’re looking to kick back or get some light studying in, there’s a spot for you.

There’ll also be 10 rooms spread out across the floor for club offices, student resources, or whatever else students need space for. A Lost & Found will make it easy to track down anything you’ve misplaced, and a club corkboard wall will be packed with flyers, posters, and sign-up sheets to keep everyone in the loop about campus happenings.

For fun, the game area will have board games, card games, and maybe even arcade machines—ideal for a break between classes.

And if you need a snack, coffee, or supplies, you're covered. A Campus Store will stock school essentials and maybe some merch, A café will have your coffee and snack fix, and there'll be vending machines and an ATM for quick convenience. Altogether, it's a lively space with social life, resources, and fun.

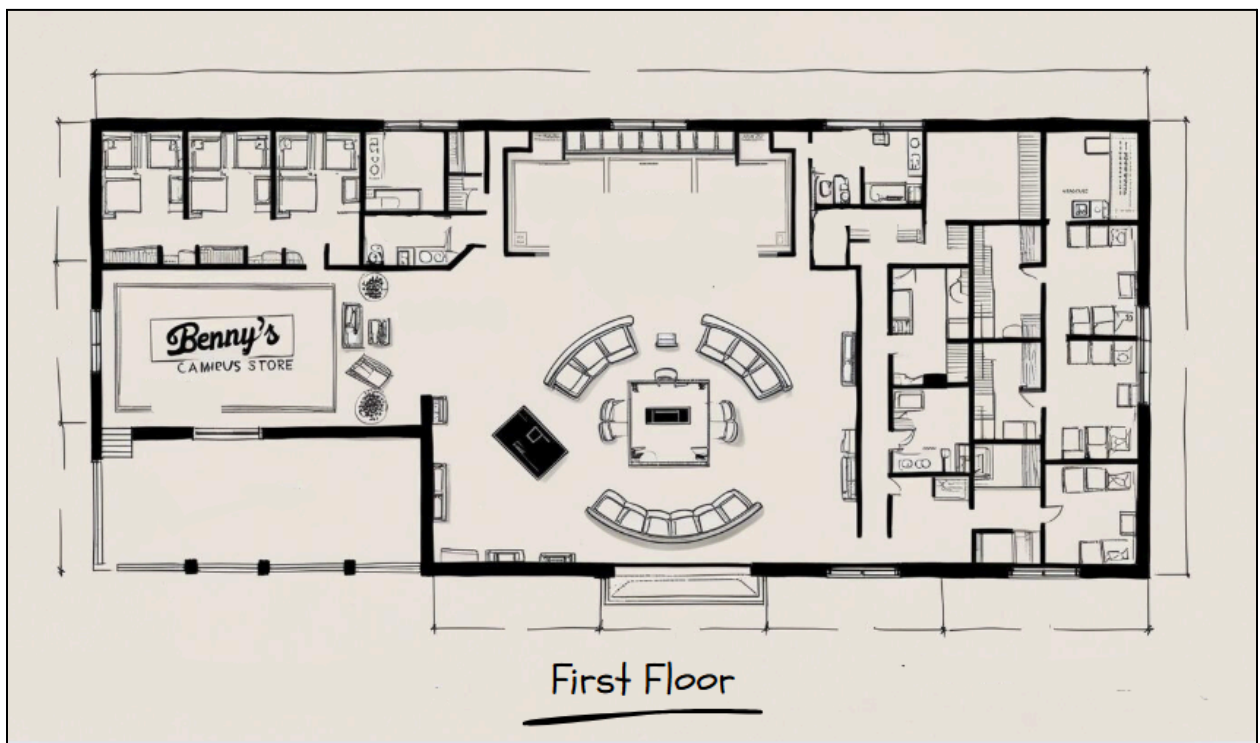


Figure 6: First (technically, fourth) Floor

Second (technically, fifth) Floor:

The second floor is all about bringing students together. Whether you're part of a club, a study group, or just looking for a space to work on a creative project, this floor has you covered.

There will be 20 flexible rooms that can handle just about anything—from meetings and

workshops to small events and group collaborations. The rooms will have movable furniture, whiteboards, and screens, so they can be rearranged to fit whatever's going on.

To make life easier for commuters and students on the go, there'll be lockers available for use. Students may reserve them either for the day or the whole semester. That way, you've got a safe spot to stash your stuff between classes. You just have to bring your own lock.

There'll also be open lounge areas with comfy seating, quiet study corners, and charging stations scattered throughout. Whether you're there for a club meeting or just need a chill place to sit for a bit, the second floor is set up for all kinds of student activity and interaction.

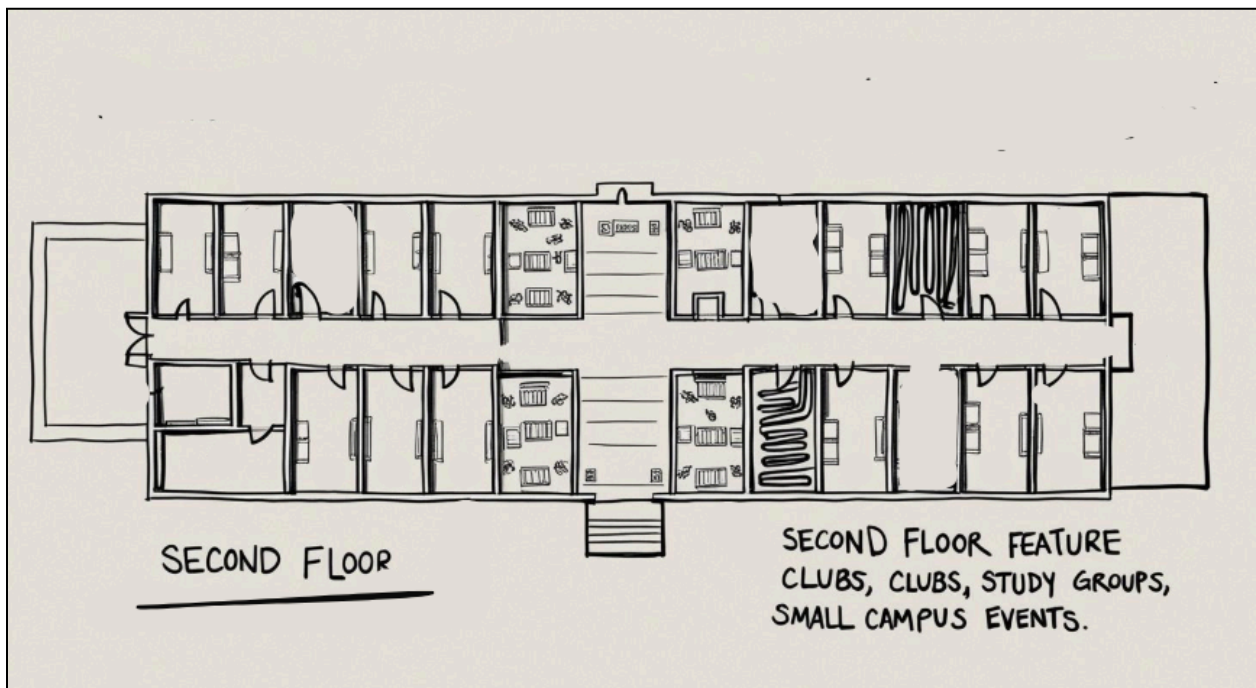


Figure 7: Second (technically, fifth) Floor

Third (technically, sixth) Floor:

The third floor is your peaceful escape from the hustle of campus life. It's designed to support mental wellness and focused studying, with 30 private rooms that can be used for

counseling sessions, academic support, or quiet group work. These soundproof rooms are perfect for confidential conversations, peer mentoring, or if you just need a little quiet. The floor will mostly have student support services.

One of the coolest features is the Nap Room—a cozy spot with reclining chairs, soft lighting, and white noise machines. Here, you can catch a power nap and feel refreshed.

There's also going to be a mini indoor garden filled with greenery, comfy chairs, and natural light. It'll be a relaxing corner for students to meditate, de-stress, or just take a breather between classes.

Throughout the floor, there'll be quiet study areas with individual pods, noise-canceling features, and soft lighting for deep focus. Overall, the third floor is like a calm oasis—complementing the more active spaces downstairs with a space made for recharging and getting stuff done.

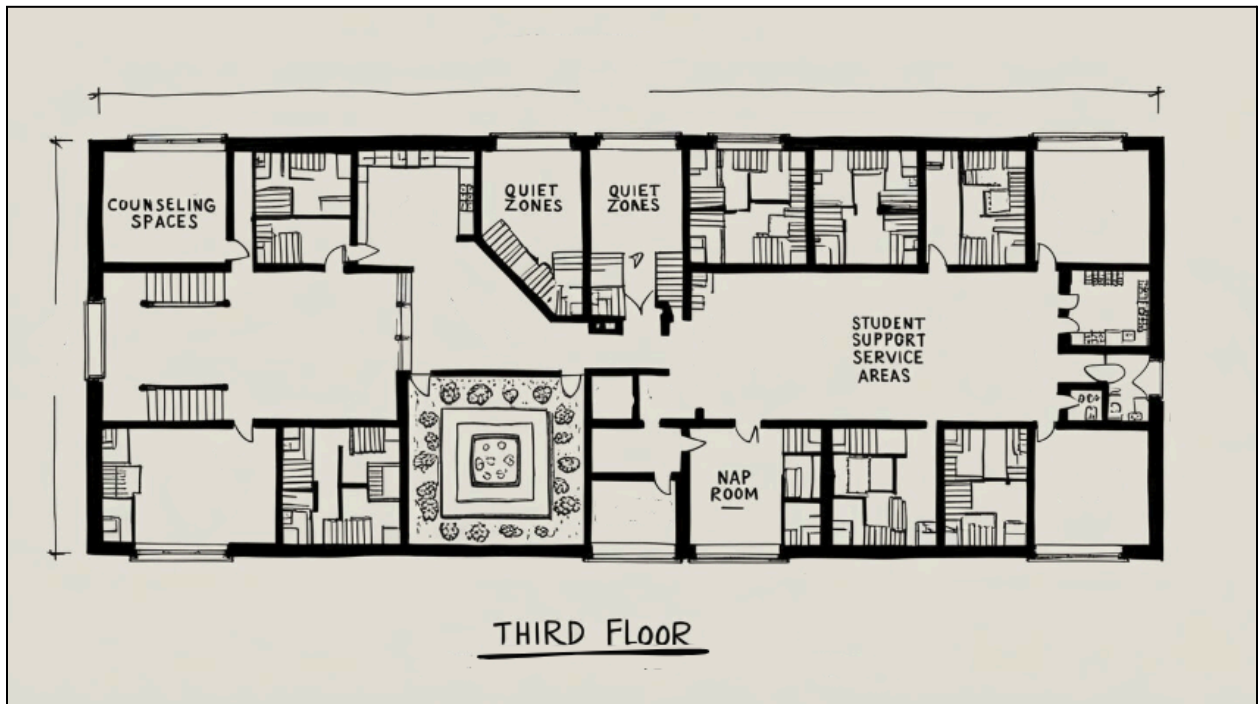


Figure 8: Third (technically, sixth) Floor

Costs & Benefits

COST ESTIMATE FOR STUDENT CENTER				
PROJECT DETAILS				
Administration Building After Project (Gross Floor Area)	82,955 sq ft			
Before Project (Gross Floor Area)	42,851 sq ft			
Addition to building- Additional three floors (Gross Floor Area)	40,104 sq ft			
Administration Building After Project (Floor Room Area)	77,208 sq ft			
Before Project (Floor Room Area)	39,631 sq ft			
Addition to building (Floor Room Area)	37,577 sq ft			
CONSTRUCTION COSTS FOR BUILDING				
Note: Gross Floor Area Will Be Used To Determine Price When Referring to Sq Ft (40,104 sq ft)				
Direct Costs	Base Cost/Sq Ft	Adjustments	Total Cost/Sq Ft	
Materials	\$175.00	(+) \$25.00	\$200.00	
Labor	\$200.00	(+) \$45.00	\$245.00	
Equipment	\$25.00	(+) \$10.00	\$35.00	
			\$480.00	Total Direct Cost/Sq Ft
Indirect Costs				
Permits (HVAC, Electrical, Plumbing)	\$15.00	---	\$15.00	
Structural Support to Existing Building	\$110.00	---	\$110.00	
Project Management Fees	\$30.00	---	\$30.00	
Testing and Inspection	\$5.00	---	\$5.00	
University Coordination & Legal	\$12.50	---	\$12.50	
General Conditions and Overhead	\$60.00	---	\$60.00	
Insurance & Bonding	\$10.00	---	\$10.00	
			\$242.50	Total Indirect Cost/Sq Ft
Contingency				
10% of hard costs (Materials + Labor + Equipment + GC)	\$54.00	---	\$54.00	Total Contingency Cost/Sq Ft
			\$776.50	Total Construction Costs/Sq Ft
			\$31,140,756.00	Total Cost for the Addition of 40,104 Sq Ft
INTERIOR DESIGN COSTS				
Note: Floor Room Area Will Be Used To Determine Price When Referring to Sq Ft (37,577 sq ft)				
Furnitures, Fixtures, & Equipment (FF&E)	Base Cost/ Sq Ft	Freight & Installation(19%)	Administration (5%)	Total Cost/Sq Ft
First Floor (Lounge, Cafe, Store, Game Area)	\$85.00	\$16.15	\$4.25	\$105.40
Second Floor (Flexible Rooms, Lockers, Study Areas)	\$90.00	\$15.20	\$4.00	\$99.20
Third Floor (Private Rooms, Nap Room, Mini Indoor Garden)	\$112.00	\$21.28	\$5.60	\$138.88
			\$12,906,947.96	Total FF&E Costs
			\$44,047,703.96	TOTAL ESTIMATED COST FOR STUDENT CENTER

Figure 9: Student Center Cost Spreadsheet

When calculating the costs for the construction of the student center, it is important to figure out what goes into calculating the price for square footage of a building. For most buildings, the general way to calculate these costs involve looking at the direct and indirect costs. The direct costs of a construction project can include, but are not limited to, the price of materials, labor, and equipment. The material needed for the construction include steel, cement, bricks, mortar, wood, plaster, etc. NYC labor is also quite expensive, coming out to be generally around \$50 per hour per worker based on a ZipRecruiter statistic. For most cases, the labor and materials of a project tend to be the most expensive part of construction. However, it is also important to take into account the different equipment that will be used for the project which can

include cranes, concrete mixers, trucks, power tools and any other tool that assists in the construction of a building. These costs aren't as high as those for materials and labor because the tools can be shared by everyone to work on multiple parts of the building. Indirect costs also play a role in finding the price per square footage of a building. Indirect costs include permits, project management fees, testing & inspection fees, and other things which can be found on the Student Center Cost Spreadsheet. These indirect costs don't contribute to the actual construction of the building, but are necessary to take into account because without them the building wouldn't be able to run. Permits from the city would need to be approved and all regulations and procedures must be followed for the construction of the building. General contractor fees are charged in order to oversee the development of the project to ensure the project would be finished by the set date or make any accommodations necessary to keep the project going. Apart from the costs that are foreseeable, there may occur unexpected delays, or site conditions which would require more time and money to be calculated into the price of the project. This is why a contingency price is determined to ensure there is enough budget to spend on the project. Finally, the furnishing and equipment of the inside of the building is taken into account to accommodate all the features proposed in the action plan. To estimate the prices for rooms, meeting rooms, private rooms, lockers, etc it can be done by referencing the AFCFS, which provides an estimate for facilities interior furnishing costs. By doing this it is calculated that the price per square foot of the building comes out to \$776.50 and the features, furnishing, and equipment price per square foot of the interior building comes out to \$343.48. By multiplying the gross floor area by \$776.50 and the floor room area by \$343.48, the total estimated price for the new student center is \$44,047,703.96.

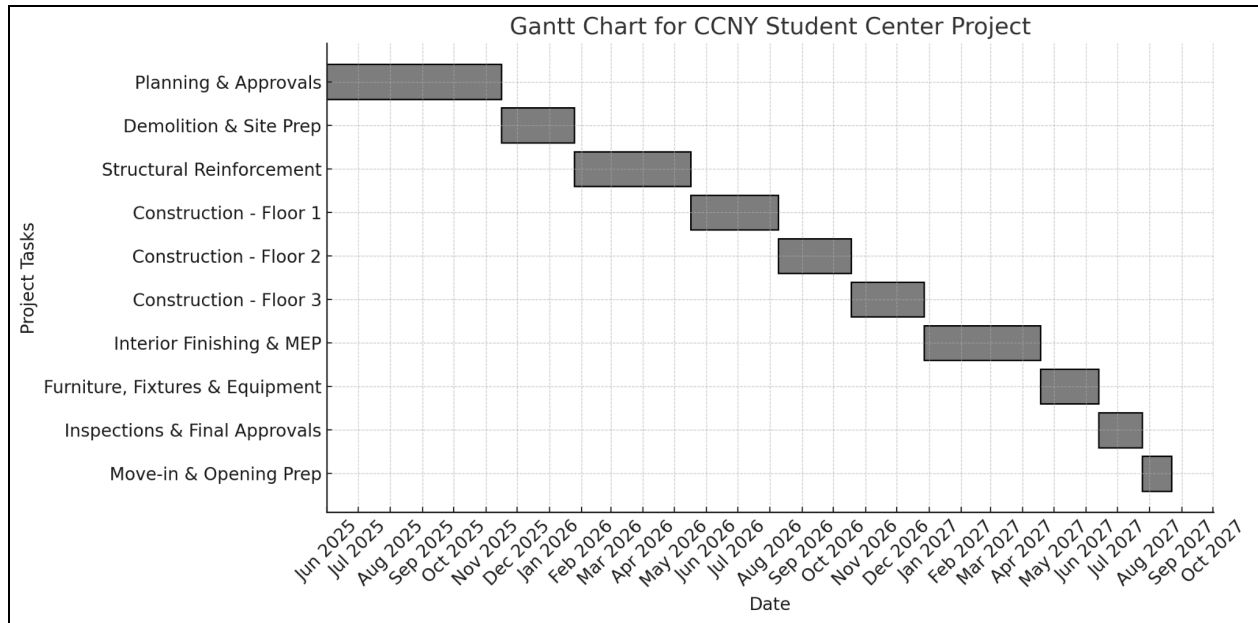


Figure 10: Construction and Interior Design Gantt Chart

This Gantt Chart gives an idea as to how long the construction project should take. Based on some research from PermitFlow, a NY based permit applying website, applying to get the necessary permits for this project, such as demolition, electrical, plumbing, or scaffolding for example, could take a process of 1-3 months at its quickest. Without these approvals, the project wouldn't be able to start and is why it's the first thing on the Gantt Chart. Estimating 3 months for approvals, and another 3 months for planning takes the initial part of the project roughly 6 months to do. The demolition and site prep stage shouldn't take as long considering almost none of the building will be demolished, since new floors will be added to the building instead of removed, and prepping the building for the next stage should involve some sort of scaffolding work to allow structural reinforcements to take place in the next phase. Allowing roughly 2 months seems reasonable for this stage. In order to make sure the current building doesn't collapse with the additional weight that will be added onto it, it is necessary to add structural reinforcement to the building as much as on the outside as in the inside. Onto constructing the actual building, each floor is estimated to take between 2-3 months to build. This was conducted

using generative AI technology which took into account DOB standards, labor availability and constraints. Months to actually build the floors may be more or less depending on the factors mentioned. For another 4-5 months, the building should have all the plumbing, electrical, HVAC systems running and working as well as finishing any inside work like flooring or adding drywall. This was estimated using Chapter, a licensed and insured general contractor that specializes in renovations and remodeling in NYC and other north eastern sites. Chapter suggests that the process of furnishing the building with the office spaces, rooms, lounges, and other features the building has could take around half a year. To wrap up the project, all that is left is to test and inspect the site to make sure the building is safe and follows all DOB standards to run. This was estimated at around a month and a half to complete, considering DOB takes around 1-3 months to get permits out. The final step would be opening up the student center and allowing students to have a new full access to a newly improved student center.

Universities across the nation have realized that student centers play a vital role in creating campus life, increasing student engagement, and providing easy access to essential resources for success in both academic and personal life. Institutions such as Montclair State University and Brigham Young University have shown how important it is to have a well-designed student center as it has shown improved retention rates, and social interactions among peers, and supports a student's overall well-being. Student centers help create an enriching environment and invigorate campus life. At Montclair University, the student center has helped many become connected to their college. Montclair's Student Center website states, "The Student Center can be viewed as a community of services. It provides a common area where students, faculty, staff, and visitors can come together for social interaction and begin to develop a spirit of cooperation and learning through common understanding." (Montclair State

University StudentCenter). Montclair University's website shows a firm belief that student centers and community engagement can enhance student retention and increase campus involvement. If you take a look at Forbes' University ranking, Montclair saw a retention of 81 percent during the 2022-2023 school year. Although academics may play a role in this high retention rate, one can also assume that the state of the student center plays a role because it provides the students with a sense of belonging. Mortensen, a construction company based in the U.S. states:

“With waning student enrollment, universities face the critical challenge of attracting and retaining students on campus. Student centers are at the forefront of this effort, serving as multifunctional hubs for academic, social, recreational, and cultural activities. By strategically incorporating modern design elements, sustainable practices, and diverse amenities, universities can create vibrant, engaging spaces that meet the needs of a diverse student population and drive revenue.” (Mortensen)

Student centers are not just physical spaces but assets to any institution struggling with declining enrollment and retention. Including modern features will not only attract future students but will also create a supportive environment for current students that helps create new connections.

When a university invests in its student centers that cater to the needs of its student population, they are creating a new environment that is necessary for both the student and the institution to grow. Another reason for CCNY to build and improve upon its student center is that it provides easy access to different student services that may help a student in their college career and because stress can severely impair a student's ability to learn. According to Veena N. and Shailaja Shastri, "Students are subjected to different kinds of stressors, such as the pressure of academics with an obligation to succeed, an uncertain future, and difficulties of integrating into

the system." (Veena and Shastri, 2016, p.71). In a high-density, fast-paced environment like CCNY, many students may find that they are falling behind their peers in all kinds of ways. Thus providing a student center with easy-to-find wellness resources, nap rooms, and relaxation areas can help students manage their stress, which would improve their academic performance and overall well-being. Brigham Young University's Student Center, with a retention rate of 90 percent, is a perfect example of how a cohesive student center can help a student navigate college life. The Wilkinson Student Center provides essential student services such as the Academic Support Office, Career Services, Counseling and Psychological Services, and Multicultural Student Services, among other excellent student services (Brigham Young University Student Center). By placing all the necessary student services in one building, the tedious and stressful lives of a college student can be diminished effectively. For example, CCNY's Mental Health Center is located in the Marshak Science Building, and it is very out of the way that it appears it may not be found easily, it appears that the hall where it is located is simply the athletic department. Therefore, if there's ever a case where a student may need support in moments of crisis, they may not know where to go. To improve a student's success and quality of life, building an easily navigable student center with easily accessible services is of the utmost importance. Student centers provide the opportunity to bond and engage students of different backgrounds. An article written by John J. Miller, an associate dean and professor at the College of Health and Human Services at Troy University, explores the effects that a student center has had on a college community. According to his article, *Impact of a University Recreation Center on Social Belonging and Student Retention*, Miller states "For many users, the campus recreation facility can function as a place of community to 'meet friends, hang out, and see and be seen'." (Miller, 2018, p. 118). A student center will provide a shared space for students

to interact and create connections with their peers, which is essential as it will create a sense of belonging at CCNY. In a school with such a high density of commuting students, many lack the means to create meaningful connections with their peers outside of class. A state-of-the-art student center that can provide lounges, game rooms, and study spaces would foster a deeper sense of community within campus. Lastly, investing in a student center will greatly improve CCNY's image. According to Miller, "A significant number of future students considered the presence of a student recreation center on campus as being a crucial factor when deciding where to attend a university." (Miller, 2018, p.117) A student center could make CCNY a more attractive prospective for students looking into college. Many other universities invest in modern student centers to boost enrollment and increase student satisfaction. Investing in such a facility would put CCNY on par with other top institutions, making it a more competitive yet affordable choice for students.

Our Team - The Dam Good Beavers

Alicja Zajac is a first-year biomedical engineering student at The City College of New York. She grew up in Staten Island where she attended New Dorp High School. At New Dorp High School, Alicja was a part of the girl's track team for 4 years, becoming the captain her senior year. She won the M.V.P. award two years in a row as well as the Bill Welsh award for exceptional academics along with athleticism. She also participated in multiple internships including the Staten Island University Hospital Partnership and JAG Physical Therapy. These experiences taught her problem-solving, leadership, and collaboration. Not only has she been an active member of her school community but she has also had a lot of work experience in customer service-related fields such as the Ocean Breeze Athletic Complex, Ralph's Italian Ice, and The National Lighthouse Museum. Alicja is proficient in the Microsoft Office Suite, she is

CPR certified, as well as bilingual speaking fluent English and Polish. In her spare time, she enjoys going to the gym, riding her bike, and camping. One day Alicja hopes to design and create medical equipment to aid patients.

Yelixa Almonte-Matias is a freshman student at The City College of New York. She is currently undecided in her major, but leaning towards architecture. She grew up in Upstate New York and attended Putnam Valley High School, where she was an active member of her school community. As a dedicated student, she tutored peers and was a member of the National Honor Society. She has a passion for theater production, something that began in high school when she joined the stage crew club, which led to a job at her local theater. There, she gained hands-on experience in ushering, ticket sales, and backstage work, developing strong customer service and teamwork skills. She also volunteered to build sets, where she became proficient in using power tools and executing precise construction tasks. Beyond theater, Yelixa enjoys crafting and recreating costumes and props inspired by fantasy and sci-fi. Her resourcefulness and attention to detail were especially valuable in wardrobe work, where she repaired and assembled costumes. She is bilingual in Spanish and English and values creativity, precision, and problem-solving in all her endeavors.

Perla Torres is a first-year Electrical Engineering student at The City College of New York. She grew up in Queens and attended Manhattan Center for Science and Mathematics in East Harlem. During her time in high school, Perla was able to delve into different clubs and programs that helped her solidify her interest in engineering. Outside her studies, she dedicates time to her community and volunteers as an assistant in religious classes at her local church. To gain experience with people vastly different from her, she worked during the 2024 elections as a poll site worker, assisting voters with ballot scanning and ensuring that no voter was stressed or

intimidated. She has hands-on technical skills such as soldering, self-taught after learning to repair old game cartridges' motherboards. Outside electronics, she enjoys embroidering, a pastime that requires patience and precision, qualities that have helped her along her academic career. She also enjoys reading because it allows her to explore new perspectives. She is fluent in both English and Spanish. Hard-working and adaptable, she thrives in fast-paced environments, taking on multiple roles as needed. Reliable and personable, Perla values problem-solving and creativity.

Edras Casia Rojas is a bilingual first-year Electrical Engineering student at The City College of New York. He grew up in Queens, NY where he attended Academy of American Studies high school. Despite going to a high school that focused more on arts and history, his physics and chemistry classes stood out to him, and led him to pursue engineering. While in high school, he co-started his high school's physics club which enabled him to learn the design and assembly of simple robots and program them with MicroPython. Outside of school work, he participates in many community service events in Woodside that help provide food, drinks, and clothes to the homeless throughout the year. He's also worked on calculating estimates for small home renovation projects and doing the work that comes along with it like changing showers, replacing vanities and sinks, and changing shower tiles. Throughout these experiences, he's been able to grow connections with clients and members of his community and gain a greater sense of empathy. In his free time, he enjoys reading, playing music, and playing soccer. These hobbies alongside his projects have slowly built his character throughout the years.

Conclusion

This student center will be more than just another building on campus, it will incentivize change in the campus community. At the forefront of any institution's mission there should be an

emphasis on providing and nurturing its student body. As demonstrated by other universities, a student center that is thoughtfully designed can strengthen a student's sense of belonging and an institution's image and standing. By offering a space that offers essential services, a fast-paced and urban commuter college like CCNY can create a more supportive and integrated community of students. A student center creates a pathway for all students to have a fulfilling and successful college journey.

As future students begin to look at their choices for higher education, providing a modern and inclusive student center becomes a key to bringing in more people. This center is not just for the current student body but also for future students who will call CCNY their home. This project will impact the lives and success of many beavers in the years to come.

References

Alfred J. Lerner Hall. Columbia University (n.d.). <https://lernerhall.columbia.edu/>

Building Directory. Wilkinson Student Center (WSCSS). (n.d.).

<https://wsc.byu.edu/building-directory>

Carnegie Mellon University. (2019). Cost Estimation. Cmu.edu.

https://www.cmu.edu/cee/projects/PMbook/05_Cost_Estimation.html

Chatzigeorgakis, N. (2024, December 6). Square footage and dollars: NYC's construction cost guide. IntraBuild.

<https://www.intraBuild.com/blog/average-construction-cost-per-square-foot-nyc>

Department of the Air Force. (2023). Air Force Furniture Cost Estimating Guide. Air Force Corporate Facilities Standards.

<https://www.wbdg.org/FFC/AF/AFCFS/AF-Furniture-Cost-Estimating-Guide.pdf>

Forbes Magazine. (n.d.). *Brigham Young University*. Forbes.

<https://www.forbes.com/colleges/brigham-young-university/>

Forbes Magazine. (n.d.-b). *Montclair State University*. Forbes.

<https://www.forbes.com/colleges/montclair-state-university/>

Gillis, A. S. (n.d.). *Risk Assessment*. Tech Target.

<https://www.techtarget.com/searchsecurity/definition/risk-assessment#:~:text=Risk%20assessment%20is%20the%20process.and%20equipment%20a%20worker%20needs>.

Lam, S. (2023, December 5). *NYC building permit guide*. PermitFlow.

<https://www.permitflow.com/blog/nyc-building-permits>

Miller, J. J. (2011). Impact of a University Recreation Center on Social Belonging and Student Retention. *Recreational Sports Journal*, 35, 117–129.

<https://journals.sagepub.com/doi/10.1123/rsj.35.2.117>

Moyal, E. (2023, August 10). *How long does it take to renovate in NYC?* Chapter.

<https://www.hellochapter.com/how-long-does-it-take-to-renovate-in-nyc/>

N., V., & Shastri, S. (2016). Stress and Academic Performance. *The International Journal of Indian Psychology*, 3(3), 71–82. <https://www.researchgate.net/publication/385866489>

Obtaining a Permit - Buildings. (n.d.). [Www.nyc.gov](http://www.nyc.gov).

<https://www.nyc.gov/site/buildings/industry/obtaining-a-permit.page>

PE Builders. (2024, June 24). How Much Does It Cost to Build an Office in Manhattan, NYC?

<https://www.pebuildersny.com/blog/post/168/how-much-does-it-cost-to-build-an-office-in-manhattan-nyc/>

Potter, B. (2023, March 15). When Did New York Start Building Slowly?

Construction-Physics.com; Construction Physics.

<https://www.construction-physics.com/p/when-did-new-york-start-building>

Student Center. Montclair State University. (n.d.). <https://www.montclair.edu/student-center/>

Team, T. E. (2023, September 26). The Epic Journey of Building Construction in NYC: From

Idea to Topping Out. ELIKA New York.

<https://www.elikarealestate.com/blog/building-construction-in-nyc/>

The City College of New York. (2020). Building evacuation - administration building. Retrieved

from <https://www.ccnycuny.edu/safety/building-evacuation-administration-building>

Trecek, D. (2023, July 26). Everything you need to know about general contractor markups.

[Buildertrend. https://buildertrend.com/blog/general-contractor-markup/](https://buildertrend.com/blog/general-contractor-markup/)

University Student Center Amenity and Construction Trends. Mortenson. (2024, June 21).

<https://www.mortenson.com/news-insights/university-student-center-construction-trends>

ZipRecruiter. (2024, May 21). Union construction salary in New York City, NY.

<https://www.ziprecruiter.com/Salaries/Union-Construction-Salary-in-New-York-City,NY>

Appendix

100 responses

+ [View in Sheets](#)
⋮

Figure 11: How often our current student center is used total responses.

What do you want (or is missing in) in the student center? Some examples include: Nap room, Student lounge, Commuter lockers, Game room... Please list in order of importance! <small>69 responses</small>	lockers
Nap room	Lockers
Game room	I've never been so idk
Lounge	Commuter lockers
Student lounge	Study lounge, Nap room, Commuter lockers
Nap room and a student therapy group!	everything
Student lounge, game room, cafeteria with better food	Lockers nap room and game room
I didn't know this space was accessible to me	Student lounge and game room!
another nap room	Game Room
Resources, rooms for study, lounge, lockers	all the examples plus rooms u can reserve cuz apparently i can't in the library
In my opinion, game room and a nap room would be really nice to have in the student center.	Commuter lockers, nap room
More seating just for food	The ambiance feels missing
lounge and nap space	I feel that nap rooms are essential to recover some energy, commuter lockers would be incredibly convenient as well!
Commuter lockers, nap room, student lounge, game room	I don't know
A nap room would be great!	Nap room, Game room
nap room, commuter lockers	Nap room, more charging ports, commuter lockers
I would like a game room, nap room, and commuter lockers.	Student lounge, game room
Food	Snacks
commuter lockers and lounge	A nap room and commuter locker would be great
Nap room, kitchen, study spaces	Game room
Nap Room, Quiet Room	all of These
nap room and more comfy chairs	Im happy
Relaxing area maybe even like private study rooms	Nap Room
Commuter lockers, nap room, student lounge, game room	Student lounge, game room
Commuter lockers and student lounge and food	student lounge, lockers, atm
Nap room	Nap room, student lounge, lockers, game room, food court, snacks, entertainment
Lockers please	commuter lockers for anyone who has a sport or job to go to after school and definitely a game room with board games, an xbox or switch maybe or projector. It should be a place where people can relax and chill after a stressful day of school since the NAC already has all of the education resources (printers, computers, workshops, tutoring, etc)
Well kept private work spaces	Game room with consoles, board games, card games, and more.
	Commuter lockers and student lounge
	Game room, nap room, student lounge
	Idk
	A lot is missing

Figure 12: What students want in a new center.

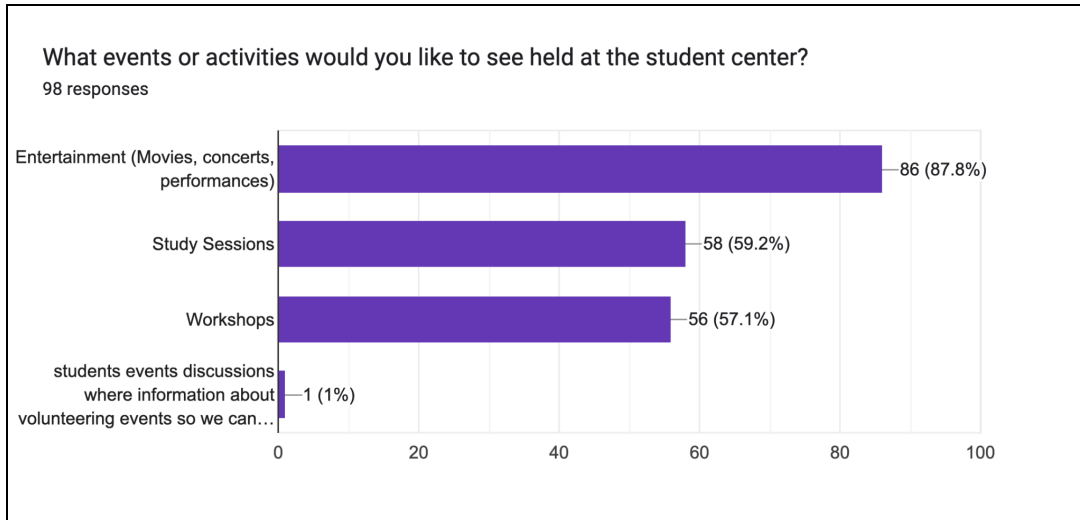


Figure 13: What activities students want.

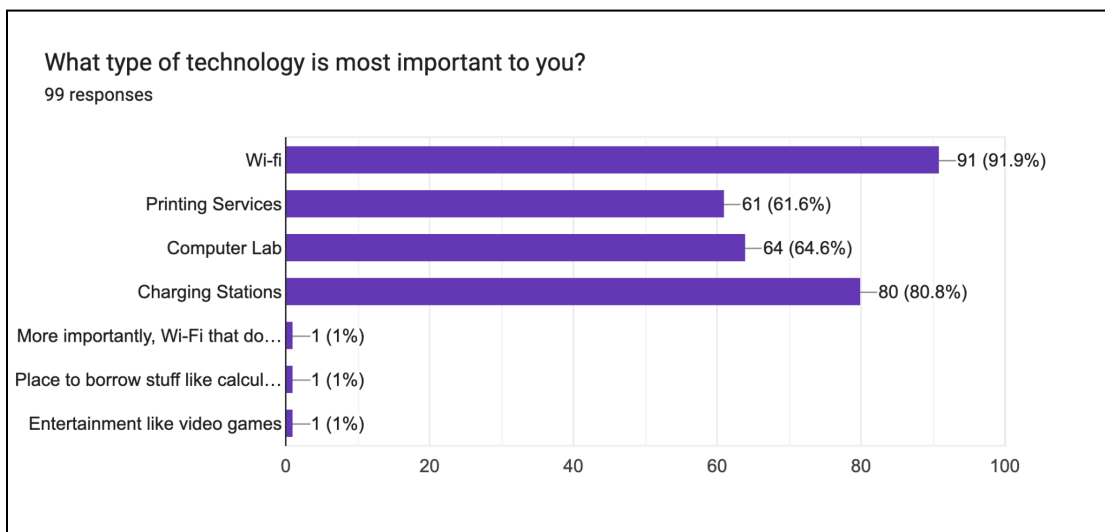


Figure 14: What technology students want.

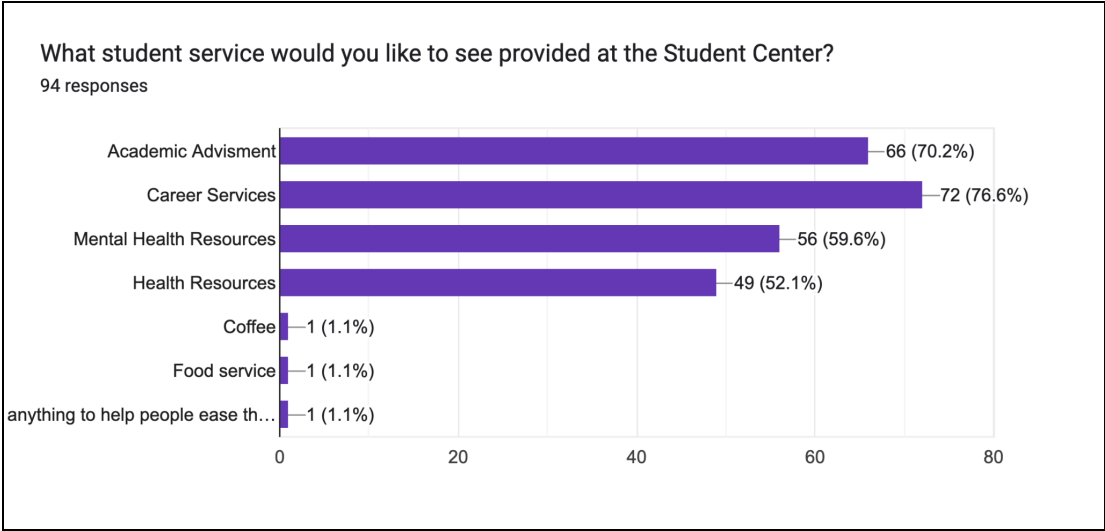


Figure 15: What services students want.

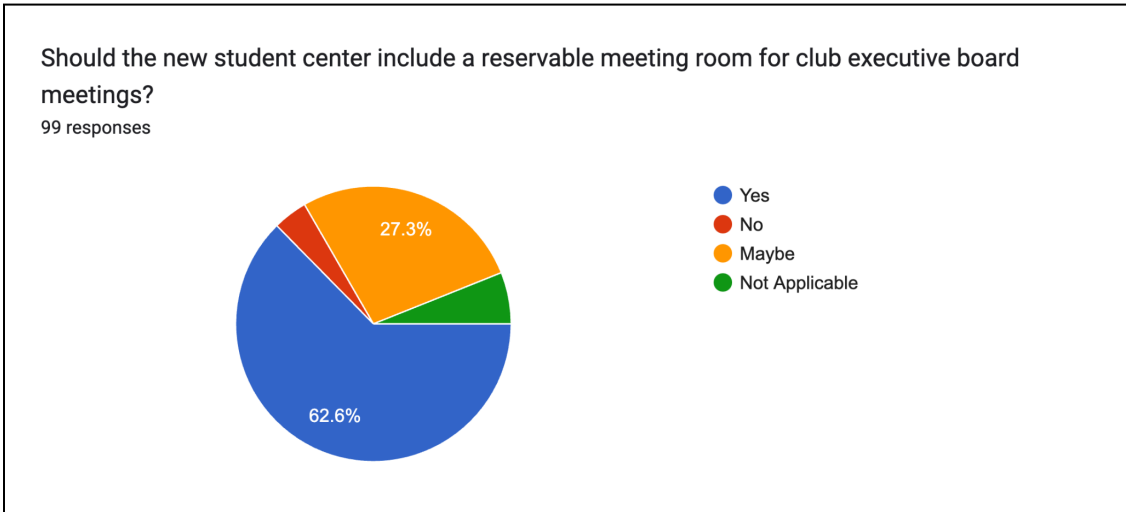


Figure 16: Do students want reservable meeting rooms.

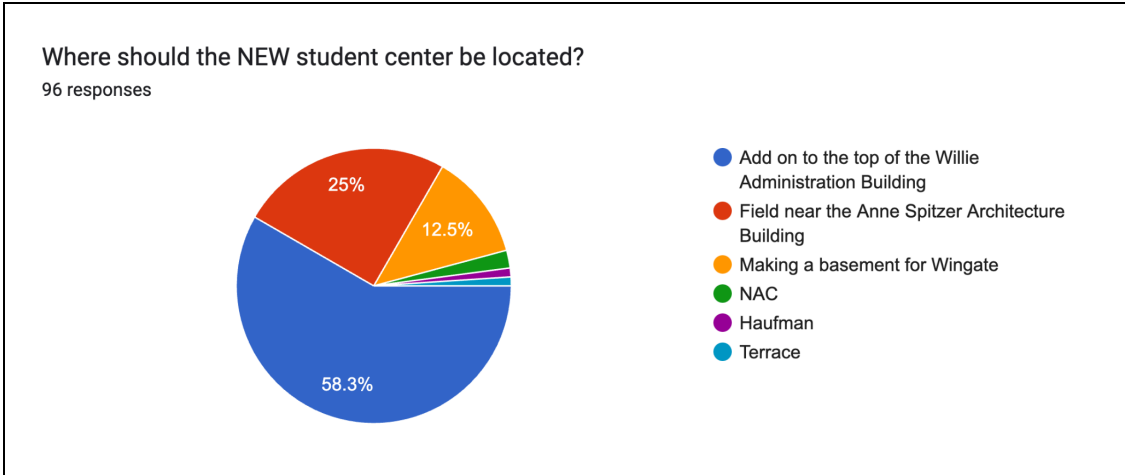


Figure 17: Where should the center be located.

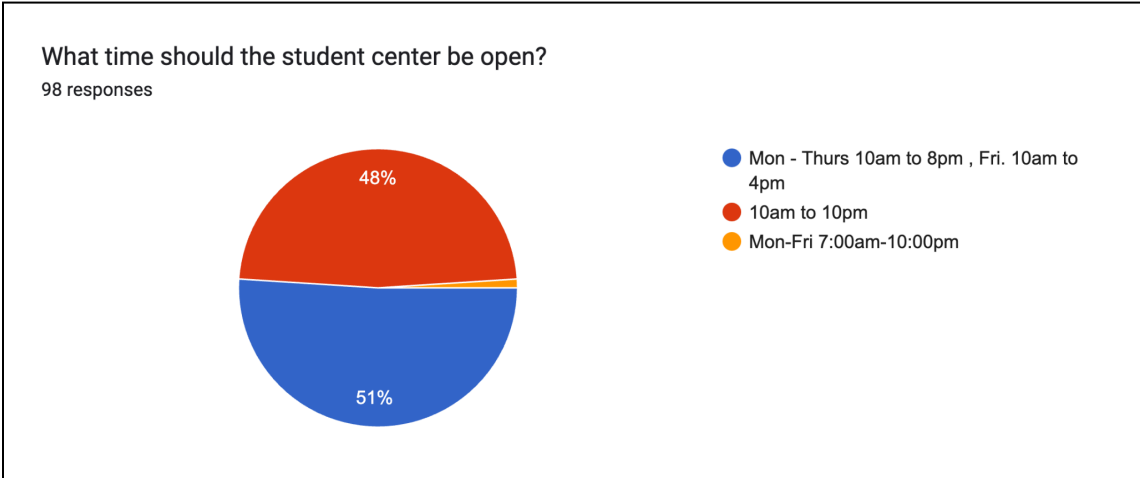


Figure 18: When should the center be open.

Do you have any additional suggestions or comments?

28 responses

No

no

N/A

Advertise this space more

That's all

nothing

Nope!

I hope these changes get implemented because they would definitely get people to be more social, have a place to do things that they enjoy, and enrich the college culturally.

nope

No :)

Look into adding something for those who commute in and out to make friends easier. Good luck!

make it better

None applicable

Having one lab for every STEM majors, and a student library.

Figure 19: Additional suggestions and comments.

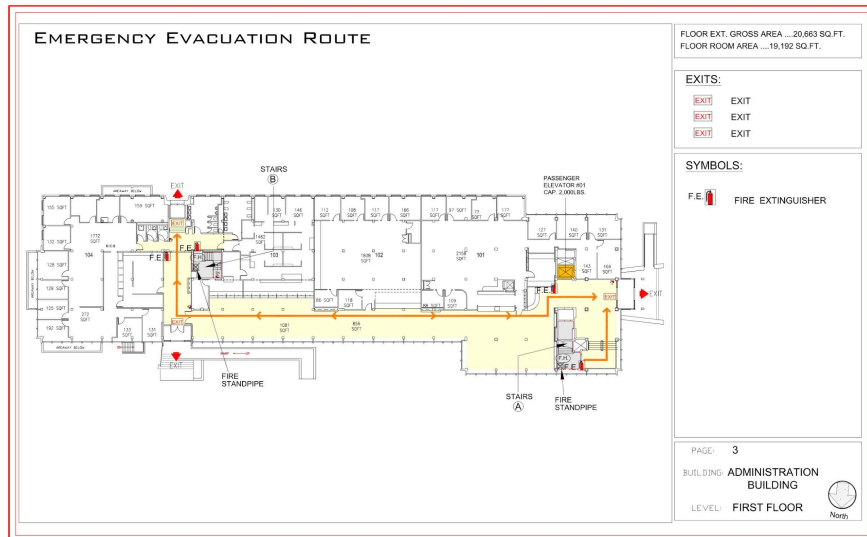


Figure 20: Current floorplan of first floor Administration building
(The City College of New York, 2020)

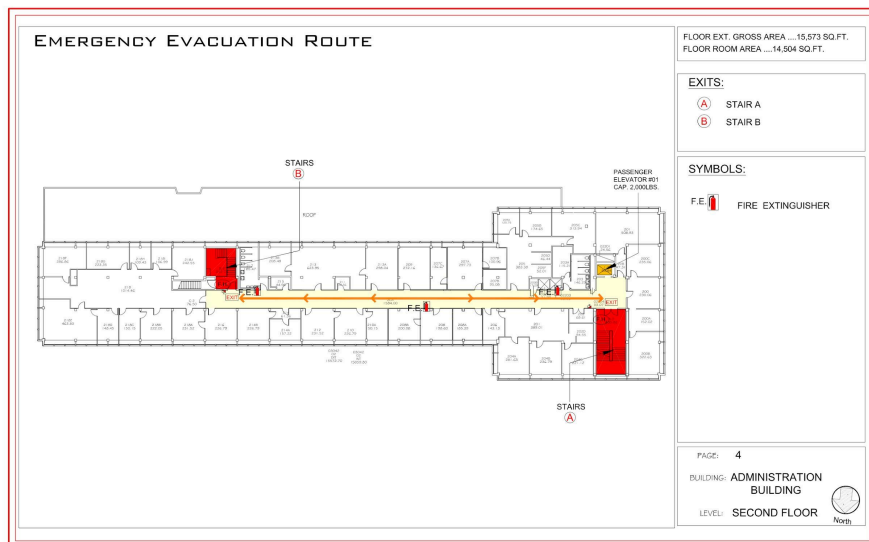


Figure 21: Current floorplan of second floor Administration building
(The City College of New York, 2020)

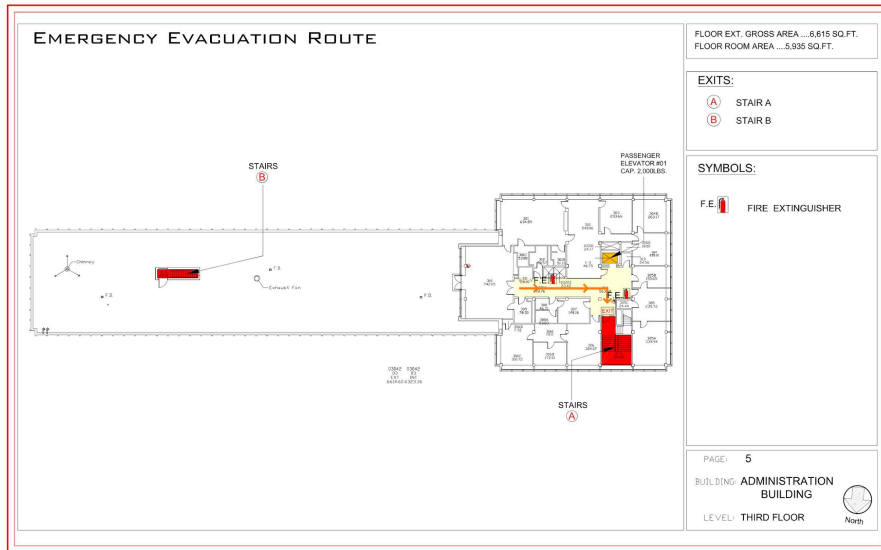


Figure 22: Current floorplan of third floor Administration building
(The City College of New York, 2020)



Figure 23: Rendition of Company Logo