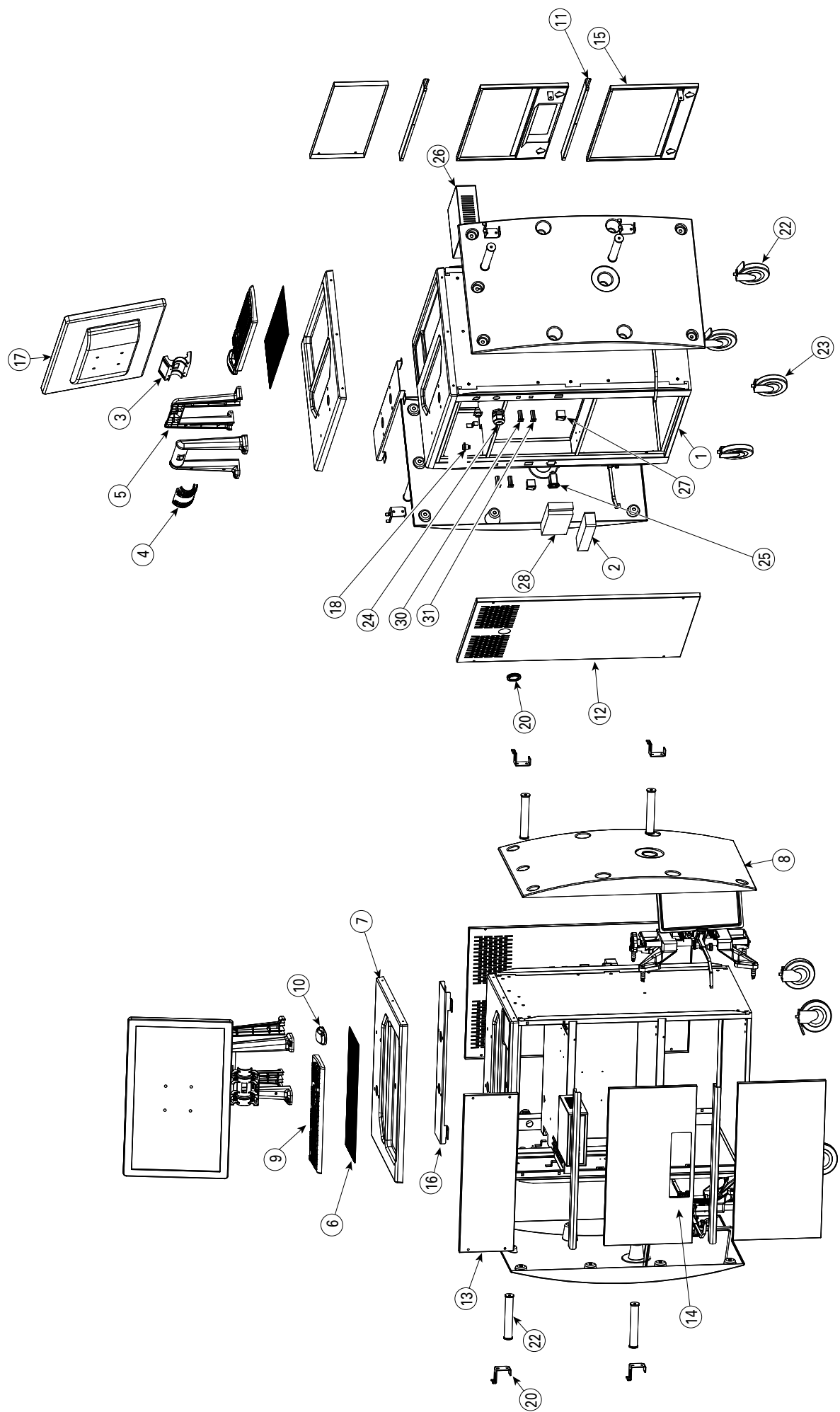




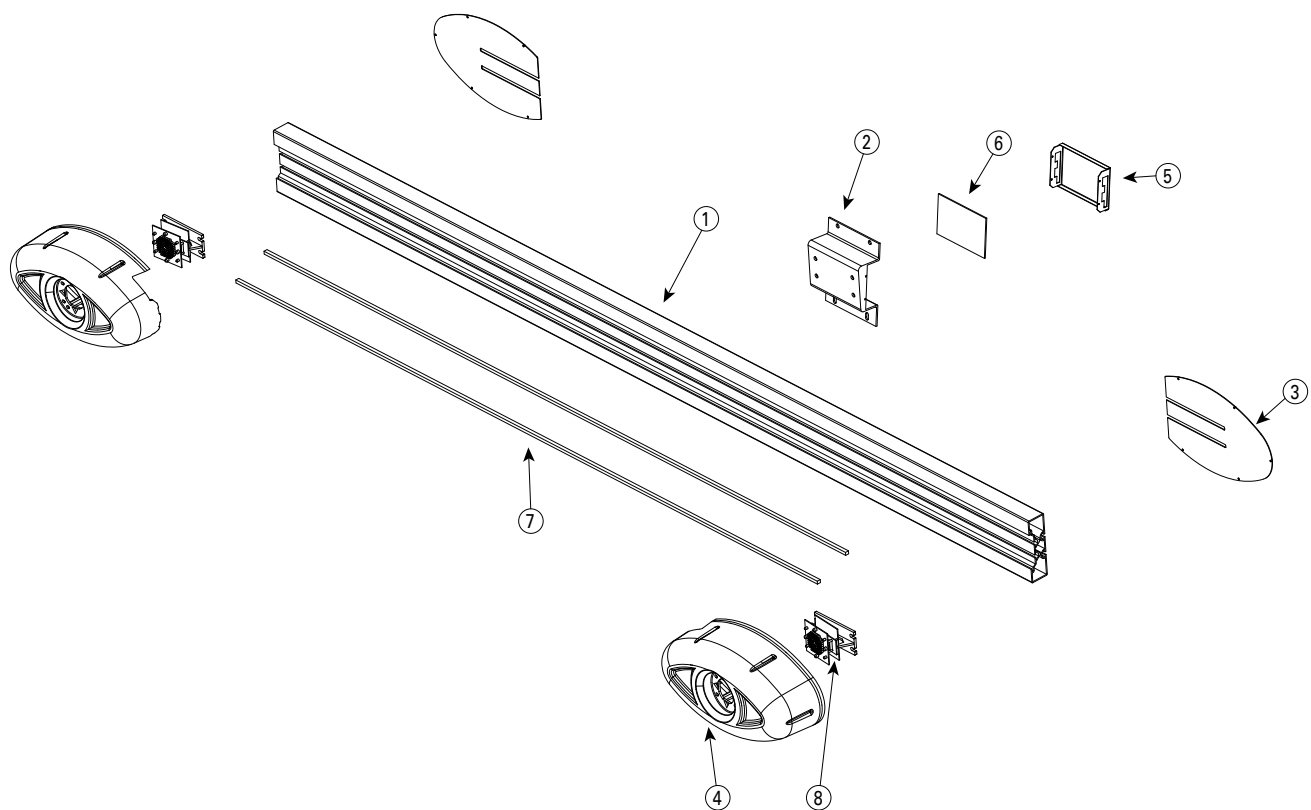
R1075 PARTS BREAKDOWN



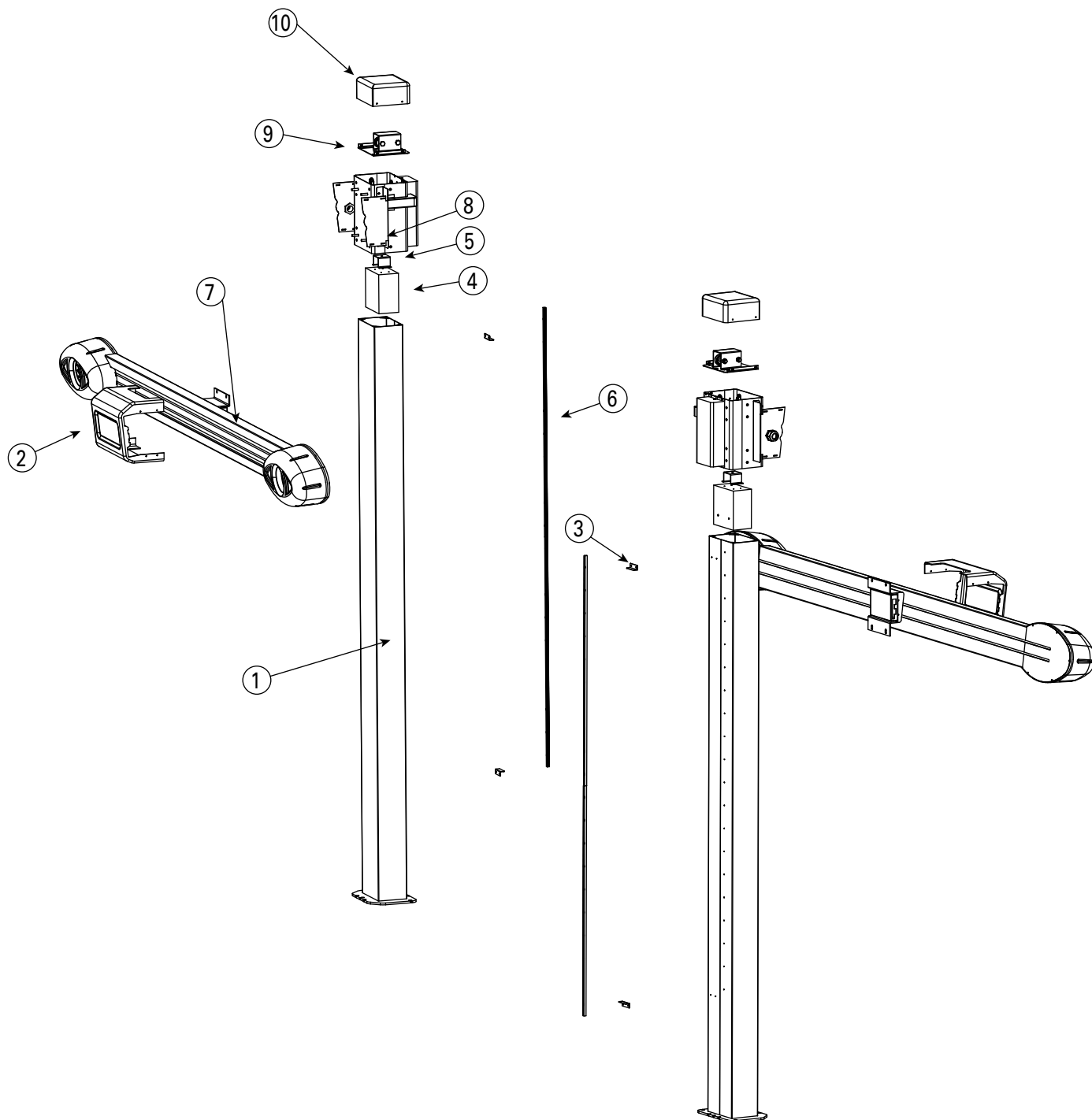


ITEM	QTY	PART NO.	DESCRIPTION
1	1	1075-100	CABINET
2*	1	8001-4 (DQ-SOCKET-1)	SOCKET
3	1	17290	DISPLAY HOLDER
4	1	17291	BACK SUPPORT
5	2	17796	DISPLAY SUPPORT
6	1	17908Y	PAD
7	1	17964Y	TOP COVER
8	2	18987Y	SIDE COVER
9	1	10197Y	KEYBOARD
10	1	10198Y	MOUSE
11	2	15493Y	HANDLE
12	1	17789Y	BACKBOARD
13	1	17790Y	UPPER PANEL
14	1	17791Y	UPPER DOOR
15	1	17792Y	LOWER DOOR
16	1	17945Y	TOP BRACING
17	1	(1964827Y) 272S1AE	27" DIAPLAY
18	1	19M-5E	PLUG
19	4	20201990Y	HOOK
20	1	202021902Y	SPOUT PLUG
21	4	202022010Y	SUPPORT ROD
22	2	701028Y	UNIVERSAL WHEEL WITH BRAKE
23	2	701029Y	UNIVERSAL WHEEL WITHOUT BRAKE
24	1	AG32-DB	CABLE GLAND AG32-DB
25	1	CW2A-10A-T01	POWER SUPPLY PLUG
26	1	ECC-T51-R1075	PC
27	2	R-210-C5N-BB	SWITCH
28	1	RD-125A	TRANSFORMER
29	1	RJ45	INTERNET PLUG
30*	1 (3)	W28-XQ1A-5	5A FUSE
31*	(1) 3	W28-XQ1A-10	10A FUSE

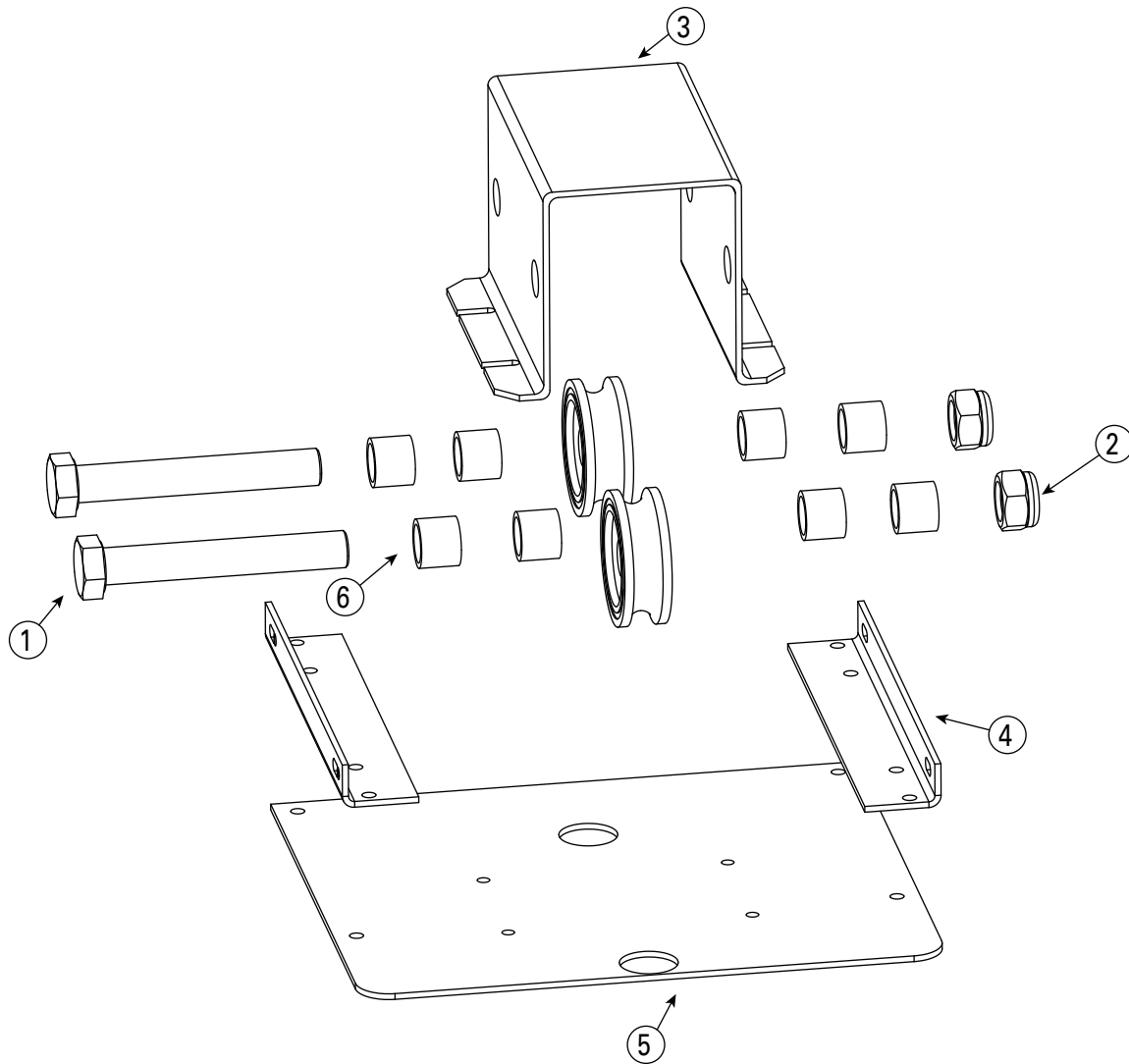
*ITEMS/QUANTITIES IN PARENTHESIS ARE FOR 220V EUROPEAN/ASIAN MODEL



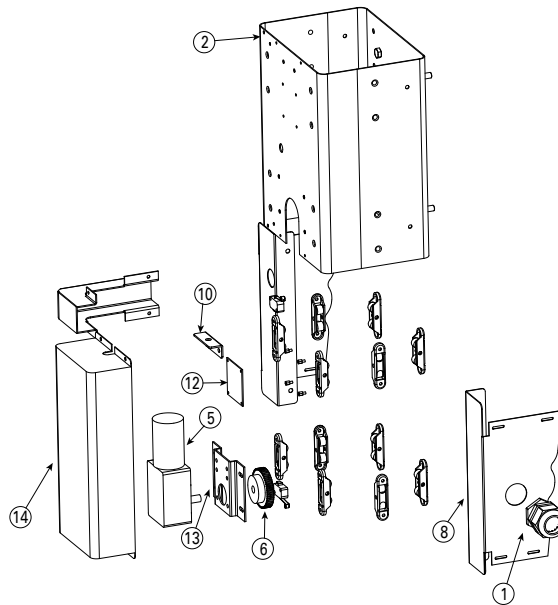
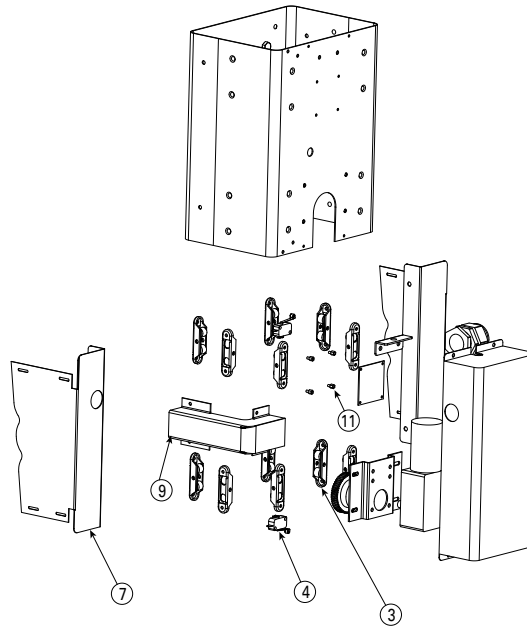
ITEM	QTY	PART NO.	DESCRIPTION
1	1	R1075-0201	ALUMINUM BEAM
2	1	R1075-0202	BEAM SUPPORT
3	2	R1075-0203	CAMERA COVER RETAINING PLATE
4	2	R1075-1001	CAMERA COVER
5	1	R1075-0205	HUB BASEBOARD
6	1	R1075-0206	HUB
7	2	R1075-0207	DECORATIVE STRIP
8	2	R1075-0208	CAMERA



ITEM	QTY	PART NO.	DESCRIPTION
1	1	R1075-0101	COLUMN
2	1	R1075-1002	FRONT COVER
3	2	R1075-0104	STOP PLATE
4	1	R1075-0106	BALANCE WEIGHT
5	1	R1075-1003	TOP COVER
6	1	R1075-0109	WIRE ROPE RETAINING PLATE
7	2	R1075-0113	SPLINE
8	1	R1075-0200	BEAM
9	1	R1075-0300	SLIDING MODULE
10	1	R1075-0400	TOP MODULE



ITEM	QTY	PART NO.	DESCRIPTION
1	2	B11-12X80	HEXAGON HEAD BOLT
2	2	B33-12	M12 HEX NYLON INSERT LOCKNUT
3	1	R1075-0401	ROLLER BRACKETS
4	2	R1075-4002	COVER MOUNTING PLATE
5	1	R1075-4003	CARRIER PLATE
6	8	R1075-4004	SPACER BUSH



ITEM	QTY	PART NO.	DESCRIPTION
1	1	AG32-DB	CABLE GLAND AG32-DB
2	1	R1075-0301	SLIDING BLOCK
3	12	R1075-0302	PULLY
4	2	R1075-0304	LIMIT SWITCH
5	1	R1075-0308	MOTOR
6	1	R1075-0309	GEAR
7	1	R1075-0310	COVER RETAINING PLATE (LEFT)
8	1	R1075-0311	COVER RETAINING PLATE (RIGHT)
9	1	R1075-0312	WIRE COVER
10	1	R1075-0313	WIRE ROPE SEAT
11	4	R1075-0314	CIRCUIT BOARD SUPPORT SCREW
12	1	R1075-0315	CIRCUIT BOARD
13	1	R1075-0317	MOTOR HOLDER
14	1	R1075-0318	REAR COVER

**Trained Operators and Regular Maintenance Ensures
Satisfactory Performance of Your Rotary Shop Equipment.**

**Replacement Parts: See installers package for parts breakdown
sheet. Order Genuine Rotary replacement parts from your
nearest Authorized Parts Distributor.**

Maintenance Assistance: Contact your local Rotary distributor.

**Should further assistance be required, contact Rotary, at one of
the phone numbers listed below.**



Rotary World Headquarters
3005 Highland Parkway, Suite 200
Downers Grove, Illinois 60515, USA
www.vsgdover.com
800.640.5438

North / South America Contact Information

Sales:

1.812.273.1622 / 800.445.5438
insidesales@vsgdover.com

Tech. Support:

800.445.5438
technicalsupport@rotarylif.com

Government Sales:

800.445.5438 X5655
rotarylif.com/Government-Purchasing-Assistance/

Additional information at rotarylif.com

Global Contact Information

Australasia: +60.3.5192.5910
Brazil: +55.11.4534.1995
Canada: 1.905.812.9920
European Headquarters/Germany: +49.771.9233.0
Latin America/Caribbean: 1.812.273.1622
Middle East/Northern Africa: +49.771.9233.0
Southern Africa: 1.812.273.1622
United Kingdom: +44.178.747.7711

