

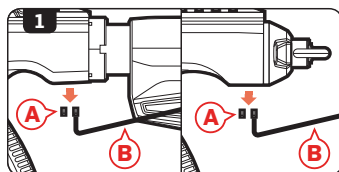
KRISS® AMBIDEXTROUS FOLDING STOCK ADAPTER INSTALLATION

Package contents: (1) Folding Stock Adapter (1) Stock Ring (1) Main Screw

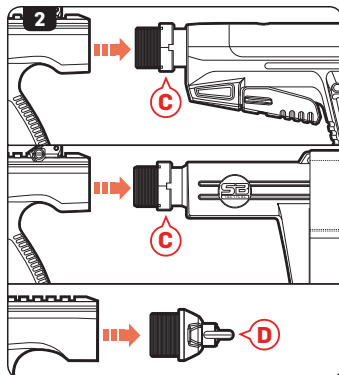
Tools needed: (1) 4mm Allen key (1) 1.5mm Allen key (1) AR-15 wrench

CAUTION: REMOVE YOUR MAGAZINE AND ENSURE THE CHAMBER IS CLEAR BEFORE PROCEEDING.

1. Remove the two set screws **A** from the bottom side of the upper housing with a 1.5mm Allen key **B**.



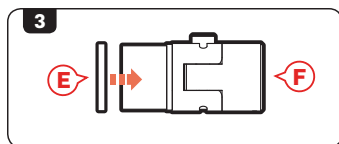
2. For CRB, SBR and SDP SB: Loosen the castle nut **C** using an AR-15 wrench and remove the buffer tube and stock.



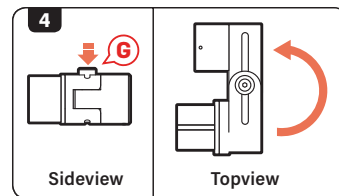
For SDP: Remove the pistol butt end **D** by turning it counter clockwise. You may need to tap the Pistol Butt End with a rubber mallet.

NOTE: Under the current rules of the Bureau of Alcohol, Tobacco, Firearms, and Explosives (BATFE) mounting a folding stock adapter and stock to a pistol constitutes the manufacture of NFA firearm. Please ensure the proper legal authorization is obtained prior to manufacture of any NFA item.

3. Add the stock ring **E** to the stock adapter **F**.



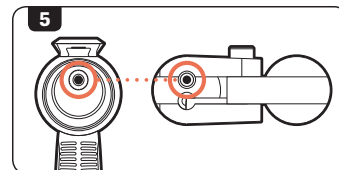
4. Press the stock release button **G** on the stock adapter and fold the stock adapter as shown.



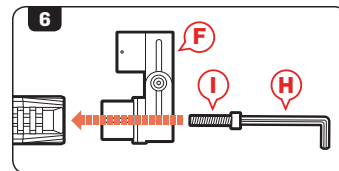
5. Line up the screw hole on the Vector and the folding stock adapter.

6. Use a 4mm Allen key **H** and the provided main screw **I** to secure the folding stock adapter **F** to the Vector.

NOTE: Torque spec of 6 N-m / 53 in-lbs. Do Not Over Torque.



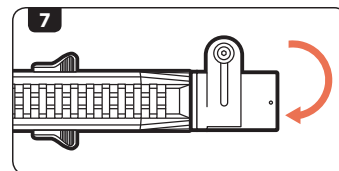
7. Unfold the stock adapter.



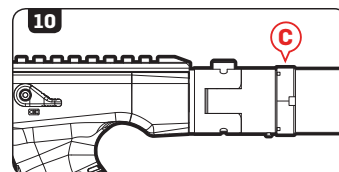
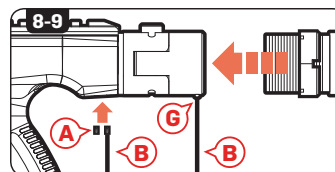
8. Thread your desired buffer tube or arm brace onto the stock adapter.

9. Reinstall the set screws **A** and tighten the bottom set screw **G** with a 1.5mm Allen key **B**.

NOTE: Torque spec of 1-2 N-m / 17 in-lbs. Do Not Over Torque.



10. Tighten the castle nut **C** with an AR-15 wrench.

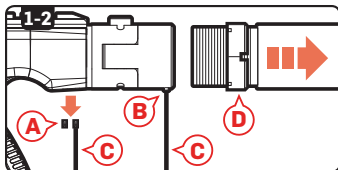


CHANGE STOCK FOLDING DIRECTION

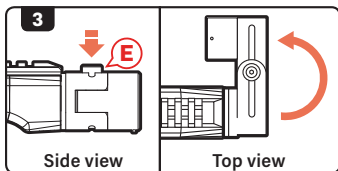
Tools needed: (1) 4mm Allen key (1) 2.5mm Allen key (1) 1.5mm Allen key (1) AR-15 wrench

CAUTION: SET THE VECTOR TO SAFE MODE, REMOVE YOUR MAGAZINE AND ENSURE THE CHAMBER IS CLEAR BEFORE PROCEEDING.

1. Remove the two set screws **(A)** from the bottom side of the upper housing and loosen the bottom screw **(B)** with a 1.5mm Allen key **(C)**.

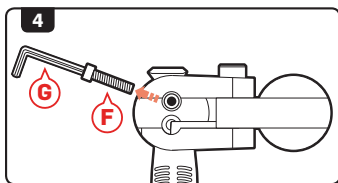


2. Loosen the castle nut **(D)** using an AR-15 wrench and remove the buffer tube, stock or arm brace.

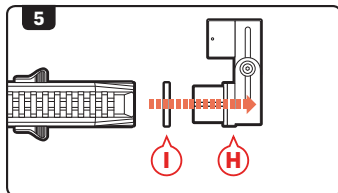


3. Press the stock release button **(E)** on the stock adapter and fold the stock adapter as shown.

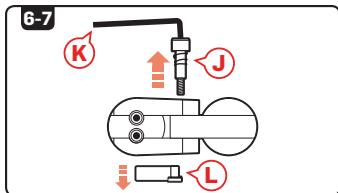
4. Remove the main screw **(F)** using a 4mm Allen key **(G)**.



5. Remove the stock adapter **(H)** and the stock ring **(I)**.

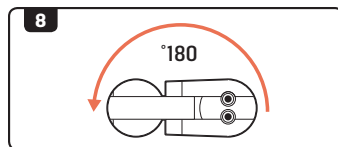


6. Remove the adapter button assembly **(J)** using a 2.5mm Allen key **(K)**.

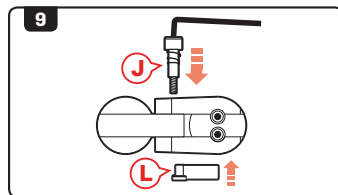


7. Remove the adapter lock **(L)** from the stock adapter.

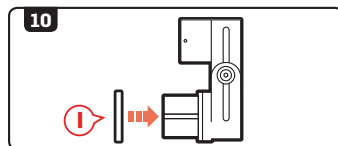
8. Turn the stock adapter 180°.



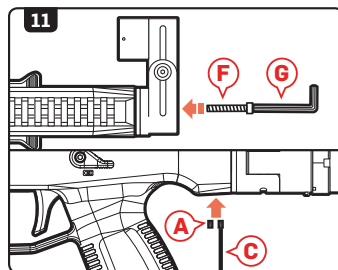
9. Re-insert the adapter lock **(L)** and re-install the adapter button assembly **(J)**.



10. Add the stock ring **(I)** to the stock adapter.



11. Re-install the folding stock adapter to the upper housing using the provided main screw **(F)** with a 4mm Allen key **(G)**, tighten to 6 N-m. Then re-install the two set screws **(A)** with a 1.5mm Allen key **(C)**, tighten to 1-2 N-m. **NOTE: Do Not Over Torque.**



12. Unfold the stock adapter and re-thread your desired buffer tube, stock or arm brace onto the stock adapter.

13. Tighten the bottom set screw **(B)** with a 1.5mm Allen key **(C)**. Tighten the castle nut **(D)** with an AR-15 wrench.

