

TABLE OF CONTENTS

Safety Information and Warnings2

Overview5

 I. Description.....5

 II. Safety5

 III. Nomenclature6

 IV. Specifications7

 A. Overall.....7

 B. Measurements.....7

 V. Ammunition7

Operating Instructions.....8

 I. Loading Magazine and Chambering8

 II. Sights.....10

 III. Firing10

 IV. Unloading.....11

Breakdown12

 I. Disassembly12

 II. Selector Switch Adjustment.....13

 III. Assembly.....15

 IV. Proper Care15

 A. Maintenance.....15

 B. Lubrication16

 C. Troubleshooting.....16

Customer Service18

 I. Service/Repair.....18

 II. Warranty.....18

Exploded View and Parts20

 I. Parts List.....20

 II. Grip Assembly22

 III. Slide Assembly24

 IV. Frame Assembly.....26

SAFETY INFORMATION AND WARNINGS

This manual explains the function and handling of the P15 and warns of the potential dangers, including death or serious personal injury that can result from the unsafe use of the P15. This manual should always accompany and transfer with the P15..

Regardless of firearm experience, you must **read this entire manual carefully** before loading or firing the P15. This manual provides basic instructions on the proper handling and functioning of the P15. The safety of yourself and others will depend on you following the instructions and warnings in this manual. Always use safe firearm practices. If you are unfamiliar with firearms, take a course in the safe handling of firearms from a qualified firearms instructor.

This manual contains several safety warnings and instructions preceded with **⚠ WARNING**, **⚠ CAUTION**, or **NOTICE**. These signal words are designed to draw your attention to important safety information.

⚠ WARNING indicates a hazardous situation which, if not avoided, could result in death or serious injury.

⚠ CAUTION indicates a hazardous situation which, if not avoided, could result in minor or moderate injury.

NOTICE addresses safety practices not related to personal injury.


⚠ WARNING Firearms can cause death or serious personal injury. Safety must be the prime consideration of anyone who handles firearms.


⚠ WARNING The P15 is designed to function reliably with proper care and knowledgeable use. Do not use your P15 unless you fully understand how to safely operate it.

⚠ WARNING It is your responsibility to use safe firearm handling habits. Accidents are the result of violating the rules of safe firearms handling as well as the warnings noted in this manual.


⚠ WARNING Always seek a doctor's advice if you are taking medication and/or are pregnant to be sure that you are able to shoot and handle a firearm safely. Never drink alcoholic beverages and/or take drugs before or while shooting. Your vision and judgment could be seriously impaired, making your firearm handling unsafe.


⚠ WARNING Always treat a firearm as though it were loaded.


 **WARNING** Always keep the muzzle pointed in a safe direction. Never point a firearm at anyone or anything you do not intend to shoot.


 **WARNING** Always keep your finger off the trigger and outside the trigger guard until you have made the decision to fire.


 **WARNING** Always wear hearing and eye protection when using your firearm.


 **WARNING** Never accept or pick up a firearm without checking the magazine and the chamber to make sure that it is unloaded.


 **WARNING** Do not trust the extractor to remove the cartridge from the chamber. Always check to confirm that it is empty.


 **WARNING** Always make sure the P15 is unloaded, on **safe**, magazine removed, and shows a cleared chamber before handing it to another person.


 **WARNING** Never allow a firearm to be used by individuals who are not familiar with its safe operation and rules of firearm safety.


 **WARNING** Never alter or modify the P15 as this could cause it to malfunction, create a dangerous condition, and void the warranty.

 **WARNING** Be sure all accessories are compatible with the firearm, properly installed on the firearm, and that the accessories do not interfere with safe operation of the firearm. Follow the instructions provided by the accessory manufacturer to the extent those instructions are not inconsistent with the warnings and instructions contained in this manual.

 **WARNING** If the P15 is dropped or forcefully struck, it could be damaged and may not function properly. Have it inspected by Kel-Tec CNC Industries, Inc. before continued use.

 **WARNING** Never load a firearm except immediately before shooting. When transporting your firearm, be sure your firearm is unloaded, on **safe**, and the action is open.

 **WARNING** Never store or transport firearms and ammunition together. Keep firearms and ammunition locked up and away from children and other unauthorized persons.

 **WARNING** Always secure firearms from children. You are responsible for the firearm's safety and security.



Most ammunition contains lead in the projectile and/or primer. Discharging firearms in poorly ventilated areas, cleaning firearms, or handling ammunition may result in exposure to lead and other substances known to cause birth defects, reproductive harm, cancer, and other serious physical injury. Have adequate ventilation at all times. Wash hands thoroughly after exposure.

The P15 was tested, carefully inspected, and packaged before it left the factory. Kel-Tec CNC Industries, Inc. cannot control what happens to the P15 after it leaves the factory. Therefore, carefully examine the P15 when you acquire it to ensure that it is unloaded and undamaged. If you do not understand any of the warnings and instructions in this manual, or have any problems operating the P15, contact Kel-Tec CNC Industries, Inc. at:

KEL-TEC CNC INDUSTRIES, INC.

1505 Cox Road

Cocoa, FL 32926

Telephone Number: 321-631-0068 Toll free: 1-800-515-9983

Hours: M-F 9am-6pm EST (excluding holidays)

Website: <https://www.keltecweapons.com>

Email: customerservice@keltecweapons.com

The current version of the instruction manual can also be downloaded at:
<https://support.keltecweapons.com/owners-manuals>

OVERVIEW

I. DESCRIPTION

The P15 semi-automatic pistol contains many unique features for a 9 x 19mm compact pistol. The double stack magazine holds 15 rounds plus an additional round can be carried in the chamber of the pistol. This many rounds are accomplished with a patented magazine extension, allowing for one of the highest capacities in a compact pistol. The P15 is striker-fired and of conventional single action type.



The P15 is molded to fit most hands, but if additional grip width is needed or a dampening cushion is preferred, there is a backstrap that can be attached to the rear of the grip for palm support. The pistol has a custom molded “gator grip” pattern with a textured finish for additional control.

Figure 1

NOTICE The P15 serial number is engraved on the aluminum receiver and is visible in a window on the left side of the grip as shown in *Figure 1*.

II. SAFETY

The P15 has a built-in striker safety and a loaded chamber indicator. The P15 also features a grip and magazine disconnect controlled with a patented Selector Switch. This allows for the disconnects to be engaged or disengaged at the shooter's preference. Adjustment requires field stripping the pistol.

NOTICE The P15 comes from the factory with the selector switch in position #1 (see pg.15), meaning both the grip safety and magazine disconnect are engaged.

WARNING The P15 does not have a conventional manual safety. It will fire when loaded and the trigger is pulled.

WARNING KelTec does not recommend disengaging any safety features.

The striker safety prevents the striker from reaching the primer. Unless the trigger being pulled, the sear will not release and the striker will be unable to contact the primer.

The magazine disconnect lever prevents the trigger bar from moving the sear without a magazine inserted. The grip safety is a lever that prevents the trigger bar from moving the sear when the button is not depressed. The P15 features a simple, easy-to-see loaded chamber indicator that protrudes conspicuously from the top of the slide when a round is in the chamber as shown in *Figure 5b* on page 10.

⚠ WARNING Never completely rely on mechanical safety mechanisms as they can fail or become unintentionally disengaged. A mechanical safety is **not a substitute** for safe firearm handling practices.

III. NOMENCLATURE



Figure 2

1 – HIVIZ H3 FRONT SIGHT	6 – TRIGGER
2 – LOADED CHAMBER INDICATOR	7 – MAGAZINE RELEASE
3 – TRITIUM REAR SIGHT	8 – MAGAZINE EXTENSION
4 – ACCESSORY RAIL	9 – BACKSTRAP
5 – SLIDE RELEASE LEVER	10 – GRIP DISCONNECT

IV. SPECIFICATIONS

A. Overall

Caliber	9 x 19 mm Luger
Operation	Locked Breech
Mode of Fire	Semi-Automatic
Trigger System	Striker Fired, Single-Action
Magazine Capacity	15+1 Rounds

B. Measurements

Weight					P15M Only			
Pistol w/o Magazine	14.1	oz.	400	g	16.6	oz	470	g
Loaded Magazine (15 rounds)	8.5	oz.	240	g				
Dimensions								
Overall Length	6.6	in	168	mm				
Barrel Length	4	in	102	mm				
Width	1	in	25	mm	1.27	in	32	mm
Height	5	in	128	mm				
Rifling	1:10	in	1:254	mm				
Force								
Trigger Pull	5	lbs	2.2	kg				

V. AMMUNITION

The P15 pistol has been designed and chambered to operate with standard 9x19mm Luger cartridge. Use only SAAMI specification, commercially manufactured ammunition. Never use non-standard, reloaded or damaged cartridges. Use only brass-cased ammunition. Any other ammunition is considered non-standard and use of it may cause functioning issues and void the warranty of the firearm.

KelTec firearms are manufactured from high quality materials and will provide extended service life. However, all warranties, expressed or implied, are voided and Kel-Tec CNC Industries, Inc. will not be liable for property damage or personal injury and consequential damages, if faulty, non-standard, or reloaded ammunition is used in any KelTec firearm.

Not all ammunition produces the same result. We recommend that once you find a brand that functions best, continue using it. Kel-Tec CNC Industries, Inc. does not recommend using hand loads, reloads, remanufactured ammunition, foreign or military surplus ammunition of unknown or questionable quality. The use of this type of ammunition will: void the warranty, introduce dangerous conditions, and possibly cause death or serious injury if the ammunition is not made to the proper specifications.

⚠ WARNING

Never use non-standard ammunition or cartridges with pressures or dimensions exceeding SAAMI standards. Failure to follow this warning may result in serious injury or death and damage to your firearm.

OPERATING INSTRUCTIONS

I. LOADING MAGAZINES AND CHAMBERING

The P15 has a 15 round magazine and can also hold one additional round in the chamber.

NOTICE

Check with federal and local laws before choosing which capacity magazine you will be using. Some states require reduced capacity magazines.

1. To start loading, position a cartridge just below the feed lips, then press the cartridge down and back until it is properly seated and retained in the magazine. Add subsequent rounds by placing them on top of the secured round with the rim touching the front of the feed lips and repeating the previous process.



Figure 3

⚠ WARNING

The P15 has a slide as well as other moving parts. During loading, firing, or inspection, make sure that fingers, body parts, or other objects are clear from the path of any moving mechanical parts.

WARNING Always check that the ammunition is clean, undamaged, and the correct caliber for the pistol. Forcing substandard ammunition into the chamber could result in damage to property, injury, or death.

WARNING Always position the pistol in a safe position when loading and unloading the firearm.

2. Place the loaded magazine into the grip until it properly engages the magazine release (*Figure 3*) with an audible “click.”

NOTICE Press the magazine firmly. Magazines can be difficult to insert into the magwell and especially when the slide is closed and/or the magazine is fully loaded.

WARNING Keep your finger straight and out of the trigger guard while chambering a round to prevent an negligent trigger pull.

3. With your non-shooting hand, firmly pull the slide all the way back (*Figure 4a*) and release. Releasing the slide on its own power will allow it to properly chamber a round. Slowly guiding it closed may cause a feeding malfunction. With a round chambered, the loaded chamber indicator (*Figure 4b*) will now be protruding conspicuously on the top of the slide.

WARNING Always ensure the slide is completely closed before discharging your firearm. If the slide is not completely closed, the pistol can still fire and may cause an unsafe event.



Figure 4a



Figure 4b

⚠ CAUTION Springs and sliding parts can pinch skin and loose clothing.

II. SIGHTS

The P15 sights come from KelTec with a general alignment. It is always best to accurately align and zero your sights. The rear sight screws adjust for both horizontal and vertical alignment. To make vertical adjustments, rotate the rear sight elevation screw using a hex key. One quarter turn counter-clockwise moves the impact approximately one inch downward at 25 yards (4moa). To move the impact upwards turn clockwise.

To make horizontal adjustments, rotate the rear sight windage screw using a hex key. One quarter turn counter-clockwise moves the impact approximately one inch to the left at 25 yard (4moa). To move the impact to the right turn clockwise.

III. FIRING

⚠ WARNING Never discharge a firearm without proper shooting glasses and ear protection.

⚠ WARNING Never shoot until you are sure of your foreground, target and background.

⚠ WARNING Never shoot at a hard surface, such as a rock, or a liquid surface, such as water, because a bullet may ricochet and travel in any direction, striking you or someone else.

⚠ WARNING When firing on a target range, be alert and follow the range officer's commands. Always be aware of other people so that they cannot accidentally walk into the line of fire. Make sure your "audience" is always at least 6 feet behind you, not next to you, when firing.

⚠ WARNING Always carry the P15 unloaded while on a range until preparing to fire. Always keep the P15 pointed towards the backstop and/or safe direction when loading, firing, and unloading it.

⚠ WARNING After firing several rounds, parts in contact with the barrel get hot and if touched, could cause harm.

⚠ WARNING The P15 ejects spent cases upwards to the right side of the slide. Even after limited firing, spent cases are hot and can cause burns when they come in contact with unprotected skin.

⚠ WARNING The P15 is a pistol. Make sure you have a firm grasp of the grip, using two hands, and at no time extend fingers or body parts into the line of fire.



The P15 has a moving slide. During firing or inspection, make sure fingers or body parts are safe from this path or any moving mechanical parts.

Once all warnings are understood and implemented, prepare to fire:

1. Center the front sight in-between the rear sight notch and align the dots. Take aim at the target while also taking notice of the target's backdrop.



The P15 is now able to fire upon trigger pull.

2. Place a firm grip on the pistol being sure to fully depress the grip disconnect.
3. Place trigger finger into the trigger guard.
4. Slowly squeeze the trigger until a round is fired. Upon firing, the slide moves rearward extracting and ejecting the empty case, then returns to the forward position feeding another round automatically. Release the trigger and you are ready to fire another round.
5. To fire another round, squeeze the trigger. This sequence can be repeated until the last round has been fired, at which point the slide will lock back.



If the last round was not fired, there will be a live round in the chamber.

IV. UNLOADING



Always make sure the muzzle is pointed in a safe direction when unloading.

To safely unload or clear the firearm:

1. Point the P15 in a safe direction and remove the magazine by pressing the magazine release.
2. Pull back the slide to eject any round that may still be in the chamber.
3. Visually and physically ensure your pistol is now safely unloaded.

BREAKDOWN

I. DISASSEMBLY



WARNING Never rely on your memory or the chamber indicator to determine whether the P15 is loaded or unloaded.



WARNING Always wear safety glasses when disassembling the P15 to protect your eyes from components that are under spring tension.



WARNING If the P15 has been fired, wait a sufficient amount of time for the components to cool before attempting disassembly. Failure to do so may result in burns.



NOTICE For disassembly, the striker **must** be released.

1. The striker must be released in order to disassemble the P15. To do so, ensure that the firearm is **unchambered** and the magazine **empty**. (see the Unloading Procedure on pg. 11). Insert the **empty** magazine into the **unchambered** pistol and then pull the trigger to release the striker. The slide must be closed in order to do this.
2. Slightly pull back the slide to align the half-moon of the Slide Release with the cutout on the slide (*Figure 5a*). With your free hand, use an empty cartridge case, dummy round, or similar prying tool, and pry the slide release (*Figure 5b*) out of the frame. Remember, never have live ammunition in your work space when disassembling your gun.



Figure 5a



Figure 5b

3. Push the slide forward to remove from the receiver. If the slide is unable to be removed, it is possible the striker is still cocked (see Step 1 of these instructions).
4. Pull out the recoil guide assembly and then the barrel.
5. This is as far as Kel-Tec CNC Industries, Inc. recommends field stripping the P15. From this point, the cleaning procedure can be implemented if necessary.



Further disassembly should only be performed by a certified gunsmith or Kel-Tec CNC Industries, Inc. Attempting further disassembly may void your warranty.

II. SELECTOR SWITCH ADJUSTMENT



KelTec does not recommend disengaging any safety features.

The Selector Switch is accessible only while the slide is removed. Disassembly instructions can be found on page 13. Using a small flathead screwdriver, the Selector Switch can be rotated **clockwise** to disengage both the Grip Safety and Magazine Disconnect or just the Magazine Disconnect.

NOTICE DO NOT rotate the Selector Switch **counter-clockwise** as it may damage internal components. Always rotate the Selector Switch **clockwise**. If the intended position is passed, continue to rotate clockwise until you are back to the intended position. The Selector Switch can be set to 1 of 3 positions. Rotate the switch until you feel it seat into the intended position.



Figure 6



WARNING If you do not completely disengage or engage the Selector Switch, it will not perform as intended.

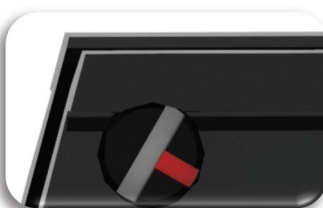
Position 1: Both the Grip and the Magazine Disconnect are engaged. This is the default setting from the factory. The perpendicular notch on the face of the Selector Switch is in the 12 o'clock position.

Position 2: Both the Grip and the Magazine Disconnect are disengaged. The perpendicular notch on the face of the Selector Switch is in the 4 o'clock position.

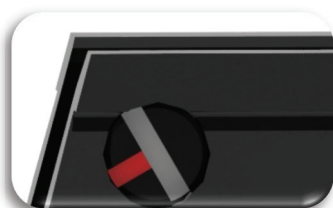
Position 3: Only the Grip Disconnect is engaged. The perpendicular notch on the face of the Selector Switch is in the 8 o'clock position.



*Position 1-
Grip & Mag Disconnect ENGAGED*



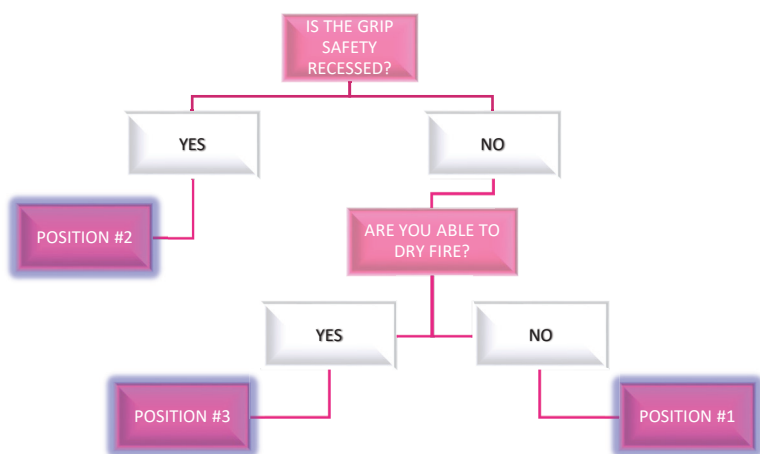
*Position 2-
Both Disconnects are DISENGAGED*



*Position 3-
ONLY Grip Disconnect ENGAGED*

To determine the position of the Selector Switch without removing the slide, safely **clear** the firearm following the Unloading procedure on pg. 11. With the **magazine removed**, pull the slide of the **cleared** P15 back once again. Release the striker by pulling the trigger.

Determination:



III. ASSEMBLY



WARNING Always wear safety glasses when reassembling the P15 to protect your eyes from components under spring tension.

Assembly is essentially disassembly in reverse; however some steps warrant extra attention.

1. When placing the barrel and recoil guide into the slide, make sure that the recoil guide stays in position when sliding the assembly back on grip. This may require holding it in place with your thumb.
2. Push the slide just past the grip to align the half-moon cutout on the slide with the axis hole in the aluminum frame, so that the slide release can be reinserted. Make sure the slide release is fully seated into position with an audible “click.”
3. Release the slide and perform a function check.

IV. PROPER CARE

A. Maintenance



WARNING Always wear safety glasses when cleaning the P15 to protect your eyes from cleaning materials.



WARNING Always make sure that no ammunition is located in the area where you clean the P15. Cleaning solvents can affect the primer and powder in ammunition which may cause it to malfunction. This could result in a bullet being pushed into the barrel of the P15 and getting stuck. Firing another round with a bullet stuck in the barrel could cause the barrel to burst, and result in death or serious personal injury and/or damage to the P15.



WARNING If the P15 has been fired, wait a sufficient amount of time for the components to cool before attempting disassembly. Failure to do so may result in burns.

Your P15 is a precision instrument and will provide a lifetime of faithful service if it is properly cleaned and maintained. It is recommended that you clean your P15 after every shooting session or more frequently if needed.



WARNING Be sure to unload and clear your P15 (see Unloading on pg. 12) before performing any cleaning or maintenance procedures.



NOTICE Only use commercially available gun solvent and gun oil or a cleaner-lubricant-preservative. Use of improper cleaning fluids could damage the P15 and void the warranty.

1. Disassemble the P15 (see Disassembly on pg. 12).
2. Thoroughly clean all exterior areas of the slide and receiver with solvent and brush.
3. Brush the barrel bore and chamber with a good powder removing solvent and bore brush. Wipe the areas clean with patches or a swab.
4. Using a small brush dipped in solvent, remove all deposits from around the breech of the barrel as well as all adjacent areas that have been subjected to powder or primer residue.
5. Clean the magazines with solvent and brush if needed.

B. Lubrication

After cleaning the entire gun, use a cloth to apply a light coating of high-quality gun oil to all interior and exterior metal surfaces and wipe clean. Manually cycle the slide back and forth to check the function of the firearm. If any parts are damaged, badly worn, or the firearm does not work correctly, the firearm should not be fired and should be returned to KelTec for service immediately.



WARNING Discharging a firearm with oil, grease, or any other material even partially obstructing the bore could result in serious injury, damage to your firearm, and death.

C. Troubleshooting

Proper functioning of your firearm is directly related to proper maintenance and care, as well as the quality of ammunition you use. If in the unlikely circumstance your P15 malfunctions, we have included a list of several suggested remedies below.

Failure to Fire (FTFR):

Also known as a dud or misfire. This occurs when the round feeds correctly in the chamber, the trigger is pulled, but the primer in the round is not discharged. Point the barrel of the P15 in a safe direction. For either scenario, wait at least 1 minute.

- Remove the magazine, eject the round and set aside. Load the magazine and proceed to fire as normal. Fire one round to see if the failure repeats. If the failure does not repeat, fire a couple more, and if they are without failure, the FTFR round that was set aside is a faulty round and should be **disposed of properly**. If the FTFR continues to occur with successive rounds, then it is likely that a thorough cleaning is required to ensure proper contact between the striker and cartridge.

Failure to Feed (FTFD):

This type of failure occurs when the cartridge does not fully seat in the chamber.

- It is most likely that the chamber, feed ramp, recoil spring and/or the magazine/spring need to be cleaned. Properly clean and lubricate the pistol.

Failure to Eject (FTEJ):

When an empty cartridge leaves the chamber, but does not fully exit the pistol, it is a FTEJ.

- Pull back the slide into the locked position. The cartridge should eject and a new round should be able to enter the chamber. Proceed to fire and see if the problem repeats. If so, the chamber and slide may need to be cleaned.

Failure to Extract (FTEX):

This failure occurs when the spent cartridge is not removed from the chamber.

- A faulty round could expand and get stuck in the chamber. The barrel could also be dirty and require cleaning. Additionally, check the extractor for visible damage and make sure that the spring is working.

In the case of malfunctions beyond the scope of the stated failures,

Contact KelTec Service at: www.keltecweapons.com/contact

CUSTOMER SERVICE

I. SERVICE/ REPAIR



Always make sure the P15 is unloaded before sending it in for service.

If your P15 ever requires adjustment, updates or repair, it should be returned to Kel-Tec CNC Industries, Inc.'s Service Department. The unloaded firearm should be sent prepaid shipping charges to:

Kel-Tec CNC Industries, Inc.
ATTN: Service Department
1505 Cox Road
Cocoa, FL 32926

Contact your chosen carrier to determine their requirements for shipping firearms. In certain states, your firearm may have to be returned to you through a local, federally licensed firearms dealer. Be sure to securely package your firearm and insure it for its full value, as Kel-Tec CNC Industries, Inc. is not responsible for firearms lost or damaged during shipment.

To ensure prompt service and handling, include a brief letter including your name, address, telephone number, the serial number of your P15, and your request(s). Once your firearm has been received, we will provide a quote of all charges for P15s not under warranty or requests outside the scope of the KelTec warranty standards. NOTE: We will not begin work until we receive your approval. Charges for adjustments, refinishing, and repairs are payable by money order, American Express, Discover, Master Card, or Visa. No COD or personal checks are accepted.

II. LIFETIME WARRANTY

Subject to the terms, conditions and limitations outlined below, Kel-Tec CNC Industries, Inc. guarantees your P15 against defects in materials and workmanship for the lifetime of the pistol.

To make a claim under this warranty, return your P15 pursuant to the instructions above. For repairs that are covered by the warranty, Kel-Tec CNC Industries, Inc. will pay the transportation and insurance charges to return your P15.

A. LIMITATIONS OF WARRANTY

The warranty will be void if any of the following occur:

- (1) the instructions in the Instruction Manual are not followed;
- (2) the P15 or any of its parts are altered or modified from their original design;
- (3) damage is caused by misuse, abuse or improper maintenance; or

(4) the P15 is disassembled beyond the breakdown procedure listed in the Instruction Manual.

There are no warranties which extend beyond the description on the face hereof.

The sole and exclusive remedy pursuant to this warranty is the repair or replacement of the P15, at the sole discretion of Kel-Tec CNC Industries, Inc.

The implied warranties of merchantability and fitness for a particular purpose are expressly disclaimed.

All disclaimers and limitations of liability shall still apply even if the limited remedy of repair and replacement fails of its essential purpose.

In States where permitted, Kel-Tec CNC Industries, Inc. assumes no liability for incidental or consequential damage or for incidental expenses.

Any action against Kel-Tec CNC Industries, Inc. based on an alleged breach of this warranty must be brought within one (1) year of the claimed breach.

Kel-Tec CNC Industries, Inc.'s liability for breach of warranty shall be limited to repair or replacement of the P15, at the sole discretion of Kel-Tec CNC Industries, Inc.

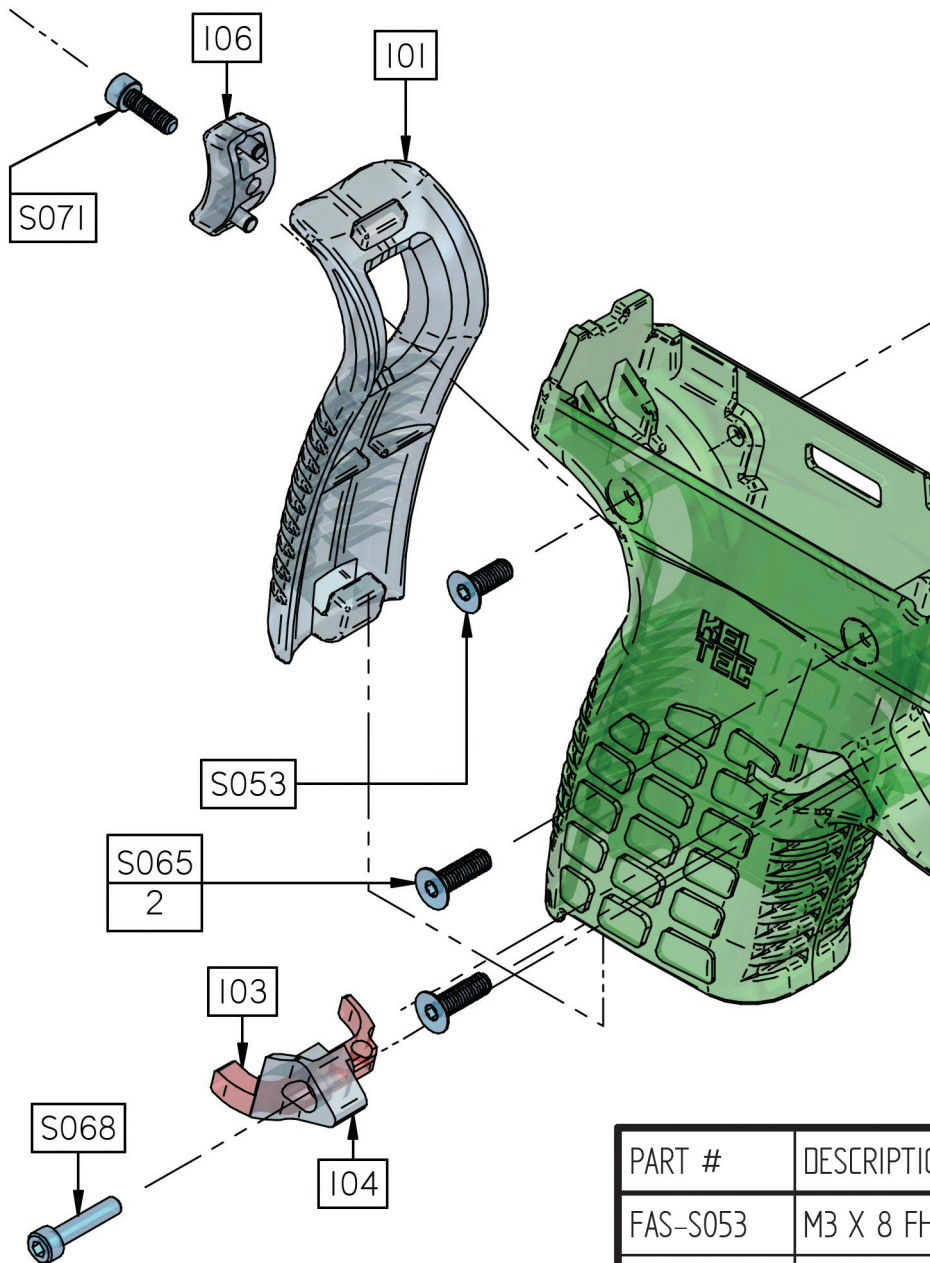
The purchaser assumes all liability resulting from unsafe handling or any action that constitutes a violation of any applicable laws or regulations. Kel-Tec CNC Industries, Inc. will not be responsible for injuries or damages resulting from careless handling, unauthorized or unsafe adjustments or modifications, the use of non-standard, defective or improper ammunition, the use of incompatible or improperly installed accessories, corrosion, neglect, fire damage, water damage, theft, abuse, ordinary wear and tear, or unreasonable use of the P15. Under no circumstances shall Kel-Tec CNC Industries, Inc. be responsible for incidental or consequential damages with respect to economic loss, injury or property damage, whether as a result of breach of express or implied warranty, negligence or otherwise.

PART

PART #	DESCRIPTION	QTY
FAS-P029	3/32 X 5/8 DP	2
FAS-P054	3-32 X 11/16 DP	1
FAS-P056	3/32 X 13/16 DP	1
FAS-P059	3/32 X 1/4 DP	1
FAS-S005	M4 X 10 FHS	1
FAS-S012	M3 X 20 BHS	1
FAS-S013	M4 X 5 SS	1
FAS-S053	M3 X 8 FHS	2
FAS-S064	4-48 X 5_64 HLSS	1
FAS-S065	M3 X 10 FHS	4
FAS-S066	M3 X 6 BHS	3
FAS-S067	2-56 X 3/16 WTHS	1
FAS-S068	M2.5 X 12 SHS	1
FAS-S071	M2.5 X 8 SHCS	1
FAS-W021	M12 SPEARED END RETAINING RING	1
P15-100	GRIP	1
P15-101	BACKSTRAP	1
P15-102	GRIP SAFETY	1
P15-103	MAG CATCH	1
P15-104	MAG RELEASE	1
P15-105	MAG RELEASE BUTTON	1
P15-106	GRIP SAFETY EXTENSION	1
P15-108	MAG DISCONNECT	1
P15-109	GRIP SAFETY SPRING	1
P15-110	MAG DISCONNECT SPRING	1
P15-111	MAG RELEASE SPRING	1
P15-1400	MAGAZINE	1
P15-200	SLIDE	1
P15-201	SLIDE COVER	1
P15-203	STRIKER SAFETY SCREW	1
P15-204	BARREL 100MM	1
P15-207	EXTRACTOR	1

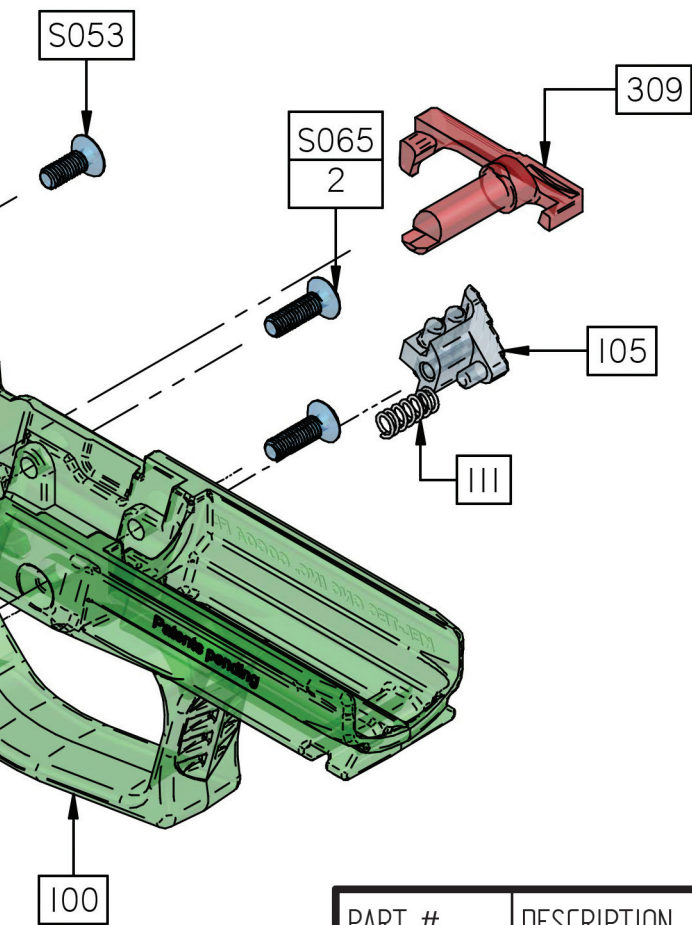
S LIST

PART #	DESCRIPTION	QTY
P15-209	RECOIL SPRING OUTER	1
P15-210	RECOIL SPRING INNER	1
P15-211	STRIKER SAFETY SPRING	1
P15-212	STRIKER SPRING	1
P15-213	STRIKER RETURN SPRING	1
P15-214	SEAR SPRING	1
P15-215	REAR SIGHT	1
P15-216	ELEVATION SPRING	1
P15-217	WINDAGE SPRING	1
P15-219	STRIKER	1
P15-220	RECOIL GUIDE	1
P15-221	STRIKER SLEEVE	1
P15-222	STRIKER CAPTOR	2
P15-223	STRIKER SAFETY	1
P15-224	EXTRACTOR SPRING	1
P15-225	CHAMBER INDICATOR	1
P15-226	SLIDE BUSHING	1
P15-227	EJECTOR	1
P15-229	CHAMBER INDICATOR SPRING	1
P15-300	FRAME	1
P15-301	TRIGGER	1
P15-302	TRIGGER BAR	1
P15-303	TRIGGER BAR SPRING	1
P15-304	TRIGGER SPRING	1
P15-305	SLIDE STOP SPRING	1
P15-306	SELECTOR SWITCH	1
P15-307	SLIDE STOP PLUNGER	1
P15-308	TRIGGER BUSHING	1
P15-309	SLIDE STOP	1
P15-310	SEAR	1
P15-311	SEAR BUSHING	1

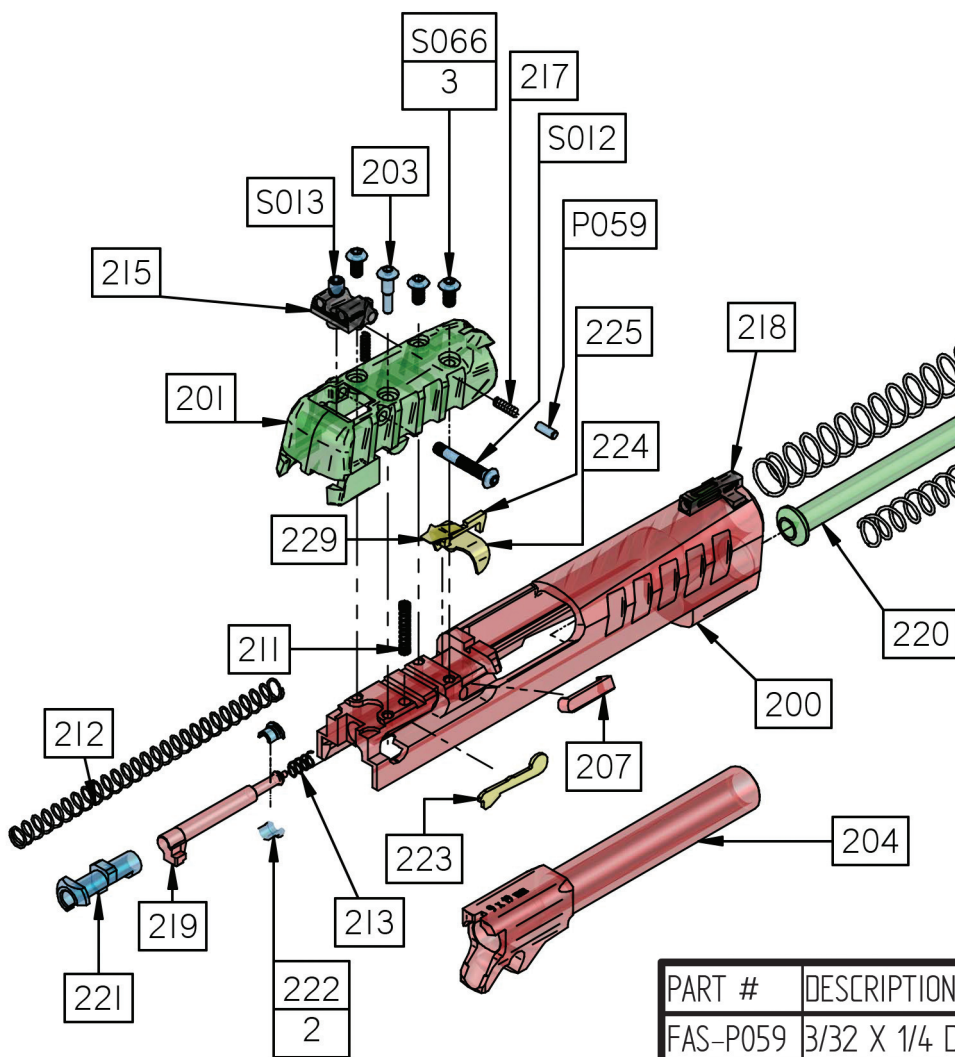


PART #	DESCRIPTION
FAS-S053	M3 X 8 FH
FAS-S065	M3 X 10 FH
FAS-S068	M2.5 X 12 FH
FAS-S071	M2.5 X 8 FH
P15-100	GRIP

GRIP ASSEMBLY

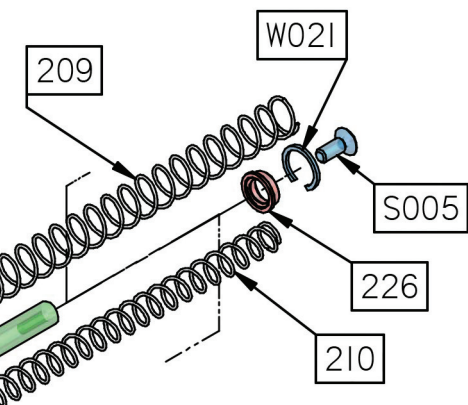


		PART #	DESCRIPTION	QTY
ON		P15-101	BACKSTRAP	1
S	2	P15-103	MAG CATCH	1
HS	4	P15-104	MAG RELEASE	1
SHS	1	P15-105	MAG RELEASE BUTTON	1
SHCS	1	P15-106	GRIP SAFETY EXTENSION	1
	1	P15-111	MAG RELEASE SPRING	1
	1	P15-309	SLIDE STOP	1



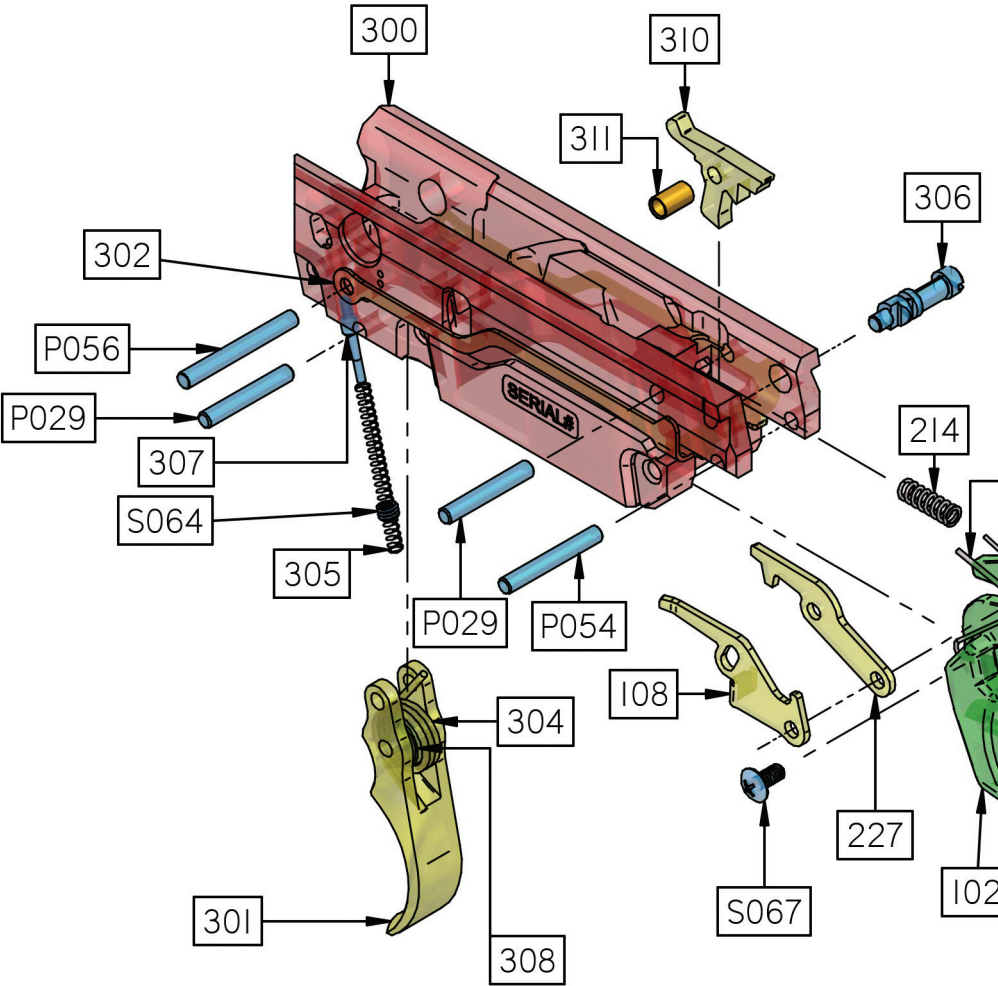
PART #	DESCRIPTION
FAS-P059	3/32 X 1/4 D
FAS-S005	M4 X 10 FHS
FAS-S012	M3 X 20 BH
FAS-S013	M4 X 5 SS
FAS-S066	M3 X 6 BHS
FAS-W021	M12 SPEARE
P15-200	SLIDE
P15-201	SLIDE COVER
P15-203	STRIKER SAF
P15-204	BARREL 100M

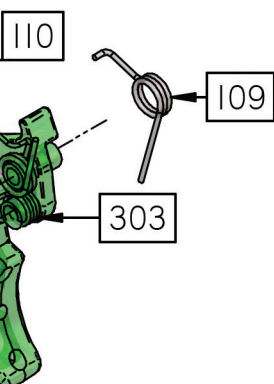
SLIDE ASSEMBLY



		PART #	DESCRIPTION	QTY
		P15-207	EXTRACTOR	1
		P15-209	RECOIL SPRING OUTER	1
		P15-210	RECOIL SPRING INNER	1
		P15-211	STRIKER SAFETY SPRING	1
		P15-212	STRIKER SPRING	1
		P15-213	STRIKER RETURN SPRING	1
		P15-215	REAR SIGHT	1
		P15-216	ELEVATION SPRING	1
	QTY	P15-217	WINDAGE SPRING	1
P	1	P15-218	FRONT SIGHT ASM	1
S	1	P15-219	STRIKER	1
S	1	P15-220	RECOIL GUIDE	1
	1	P15-221	STRIKER SLEEVE	1
	3	P15-222	STRIKER CAPTOR	2
END RETAINING RING	1	P15-223	STRIKER SAFETY	1
	1	P15-224	EXTRACTOR SPRING	1
	1	P15-225	CHAMBER INDICATOR	1
ETY SCREW	1	P15-226	SLIDE BUSHING	1
MM	1	P15-229	CHAMBER INDICATOR SPRING	1

FRAME ASSEMBLY





PART #	DESCRIPTION	QTY
FAS-P029	3/32 X 5/8 DP	2
FAS-P054	3-32 X 11/16 DP	1
FAS-P056	3/32 X 13/16 DP	1
FAS-S064	4-48 X 5_64 HLSS	1
FAS-S067	2-56 X 3/16 WTHS	1
P15-102	GRIP SAFETY	1
P15-108	MAG DISCONNECT	1
P15-109	GRIP SAFETY SPRING	1
P15-110	MAG DISCONNECT SPRING	1
P15-214	SEAR SPRING	1
P15-227	EJECTOR	1
P15-300	FRAME	1
P15-301	TRIGGER	1
P15-302	TRIGGER BAR	1
P15-303	TRIGGER BAR SPRING	1
P15-304	TRIGGER SPRING	1
P15-305	SLIDE STOP SPRING	1
P15-306	SLECTOR SWITCH	1
P15-307	SLIDE STOP PLUNGER	1
P15-308	TRIGGER BUSHING	1
P15-310	SEAR	1
P15-311	SEAR BUSHING	1

[illegible]