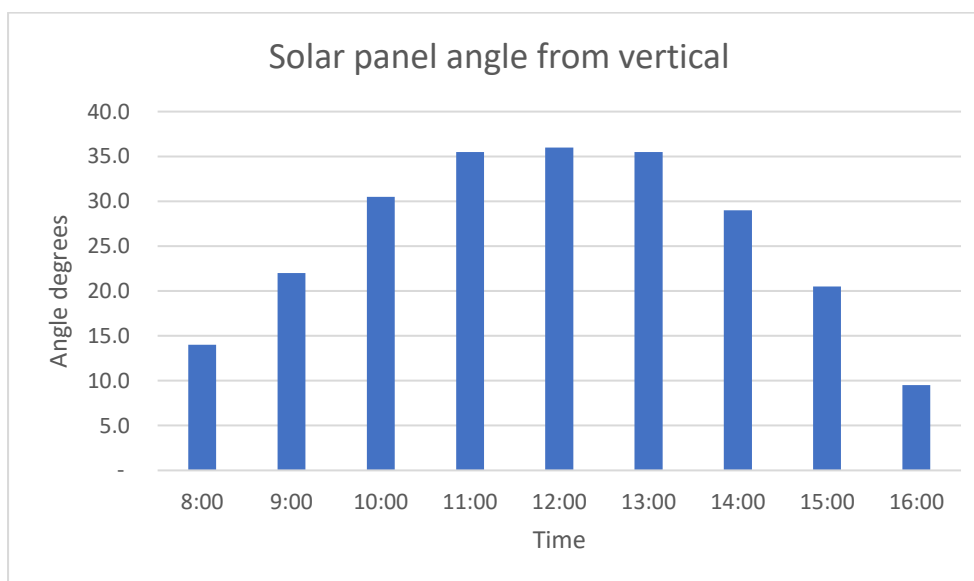
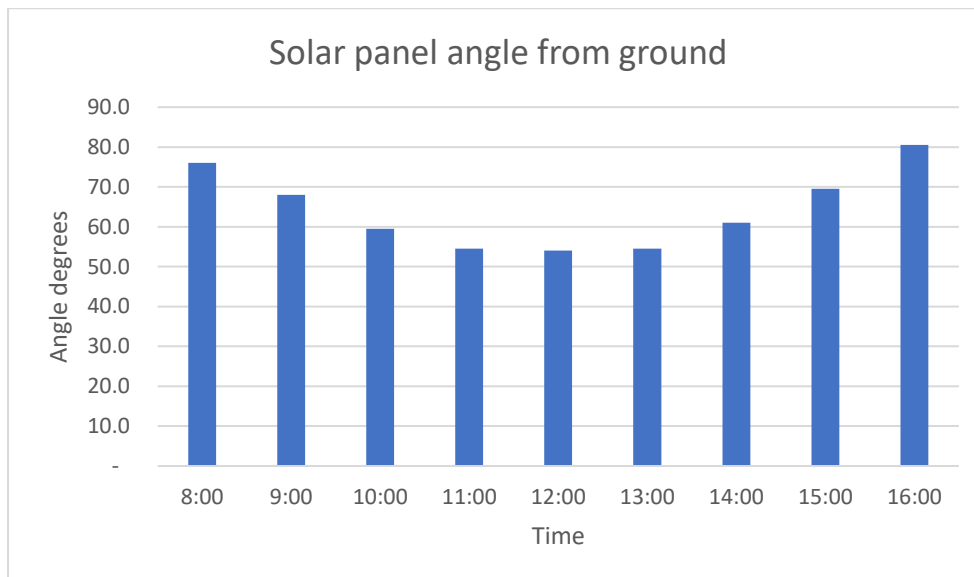


Latitude: 33.748239 degrees south

Date: 16/5/2022

Time	Angle from ground	Angle from vertical
8:00	76.0	14.0
9:00	68.0	22.0
10:00	59.5	30.5
11:00	54.5	35.5
12:00	54.0	36.0
13:00	54.5	35.5
14:00	61.0	29.0
15:00	69.5	20.5
16:00	80.5	9.5



[Go to next page...](#)

The Solar Panel Sun Spotter is made from aluminium angle and a PVC tube. The tube is held in place by elastic bands and paper clips. The cardboard back plate is cardboard cut from a Frosty Fruit box.



[Go to next page...](#)

The Solar Panel Sun Spotter is attached to the Solar Panel and it's design is such that it is perpendicular to the plane of the Solar Panel.



[Go to next page...](#)

When the Sun is lined up correctly with the Solar Panel Sun Spotter, a circle of light is formed on the Solar Panel meaning the Panel is angled perfectly with the Sun. The cardboard back plate creates a shadowed area for the light to be highlighted. The Solar Panel Sun Spotter can now be detached until it is time to move the Solar Panel later in the day to catch more sun.

