

Model: 1738101 CSW-201G UHF Manual Coaxial Switch for DC 600 MHz

The CSW-201G switch is manual, double contact coaxial switch for switching high frequency signals on a line of 50 Ω .

Features

This coaxial switch have been designed with special emphasis on high frequency characteristics for use as high frequency signals. It features:

- ✓ Wide frequency range
- ✓ Low SWR
- ✓ Negligible insertion loss
- ✓ The connectors are gold plated to reduce the contact resistance
- ✓ It has a high withstand voltage and will not produce heat



Accessories and Operation

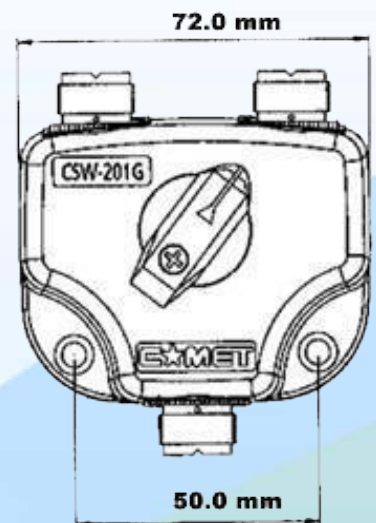
This equipment includes two tapping screws (4x16) for attaching to the wall. Use these tapping screws to attach the equipment to wall.

This unit goes temporarily into an open state during switching operations (switch timing open form).

If the transmitter is switched in the transmission state the load SWR goes temporarily to unlimited and can permanently damage the transmitter as well as the contact points.

Always switch to the receiving state when carrying out switching operations.

This unit has e the opened side of the connector to the mechanism which becomes an short-circuiting state because of the performance improvement.



Specifications

Frequency Range:	DC~600MHz	Impedance:	50 Ω
Insertion Loss:	DC~600MHz 0.12dB	VSWR:	DC~600MHz 1.2
Isolation:	DC~500MHz 60dB	Connector:	M-J
Switching Circuit:	Single pole 2 output position		
Rating Power:	1,500W (PEP) @ DC~30MHz / 1,000W (PEP) @ 30~150MHz / 500W (PEP) @ 150~600MHz		
Dimensions:	72 (L) x 78 (W) x 47 (H) mm	Weight:	430g