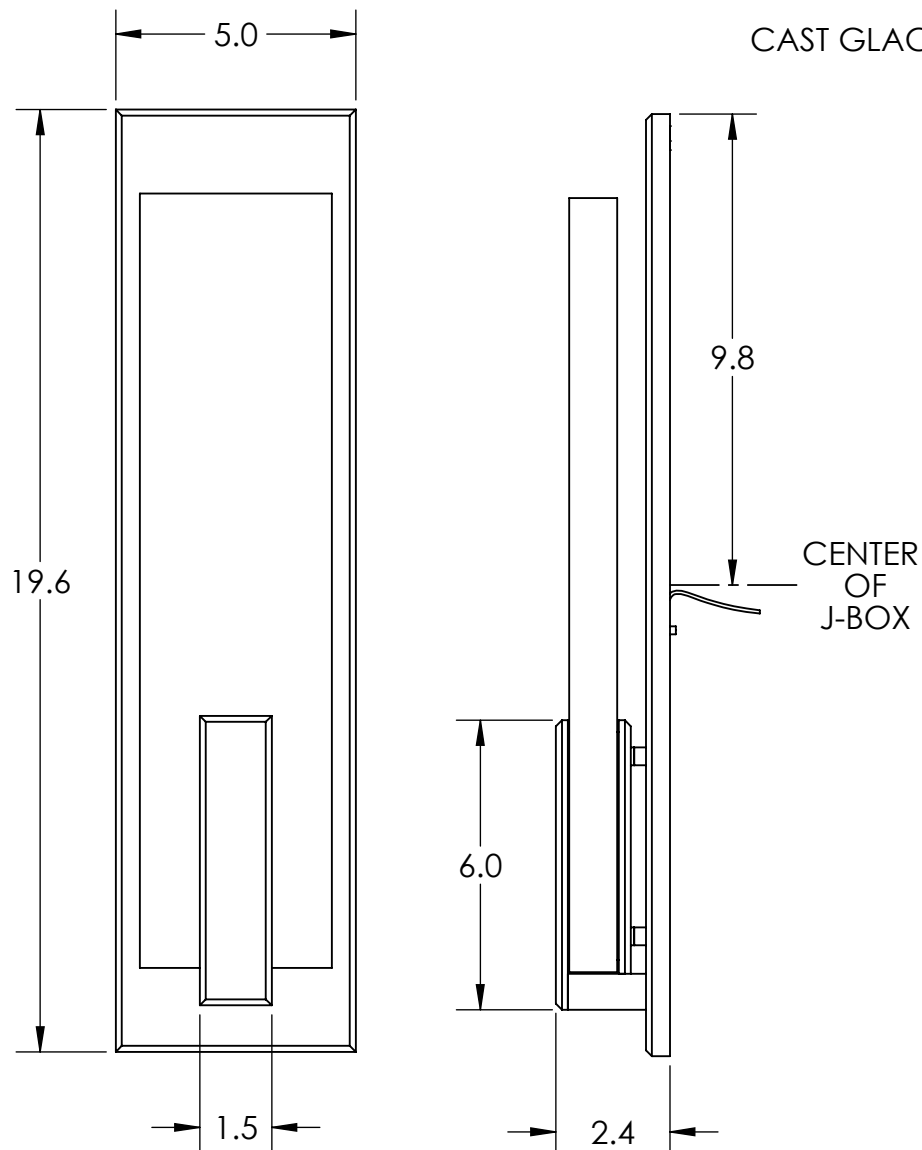
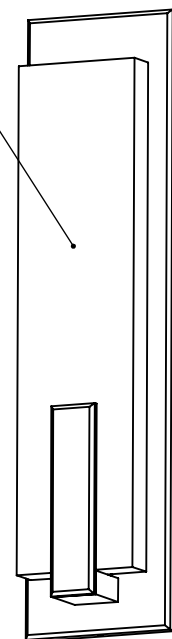
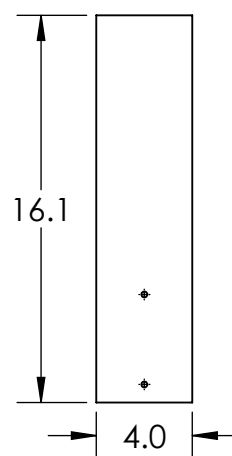


Collection: GLACIER

Product #: IDB0061-19



CAST GLACIER GLASS

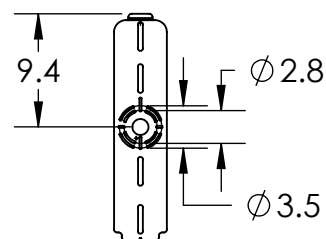
QTY: 1
CAST GLACIER GLASS**ADA COMPLIANT**

All dimensions are shown in inches unless otherwise stated.
Visit hammertonstudio.com for product options.

**** NOTE****
DRIVER TO BE INSTALLED IN J-BOX.
MINIMUM SIZE OF J-BOX REQUIRED IS
4" L x 4" W x 1.5" H

3/23/22 ©

| | | | |
|--|-----------------|---------------------------------------|---------------------------|
| Mounting Packet: N | Weight(lbs.): 9 | Electrical Type: LED | CCT: 2700K/3000K |
| UL Location: DRY | | Elec. Qty: 1 | Wattage: 5.2 Voltage: 120 |
| Finish: SEE WEB SITE FOR OPTIONS | | Source Lumens: Ambient: 340 | Down:--- |
| Top Diffuser: N/A | | Dimmable: Forward/Reverse Phase To 1% | |
| Bottom Diffuser: N/A | | CRI: 93+ | Power Factor: >0.9 |
| All fixtures created by Hammerton are handcrafted by artisans. Dimensions may vary up to 7/8". | | | |
| © Copyright 2022. All rights in design, detail or invention of this drawing are reserved as the property of Hammerton. Any imitation or adaptation without written consent is strictly prohibited. | | | |
| Hammerton Inc. 217 Wright Brothers Dr. Salt Lake City, UT 84116 (801)973-8095 | | | |

Mounting Detail**MOUNTS DIRECTLY TO J-BOX**