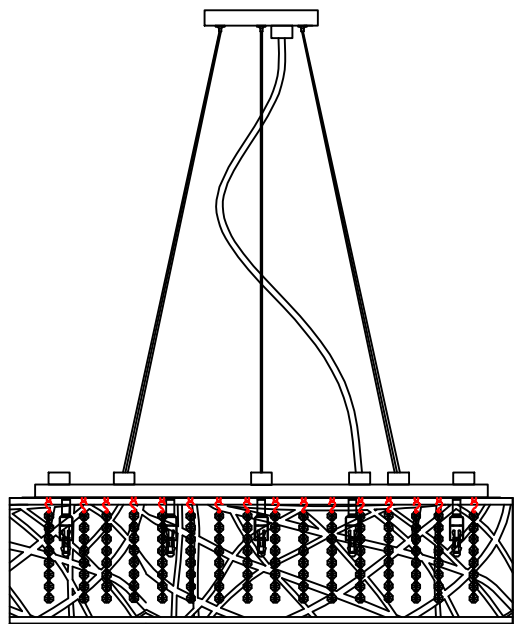


2

Contemporary
Lighting

PRODUCT NAME: Inca
ITEM NUMBER: E21310-10BZ

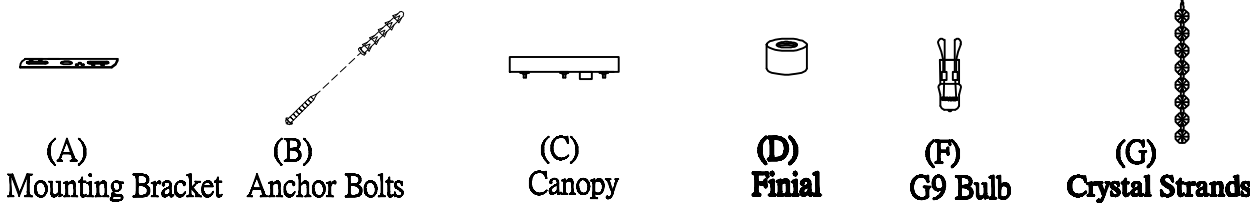
Please consult your electrician for hanging fixture and wiring.



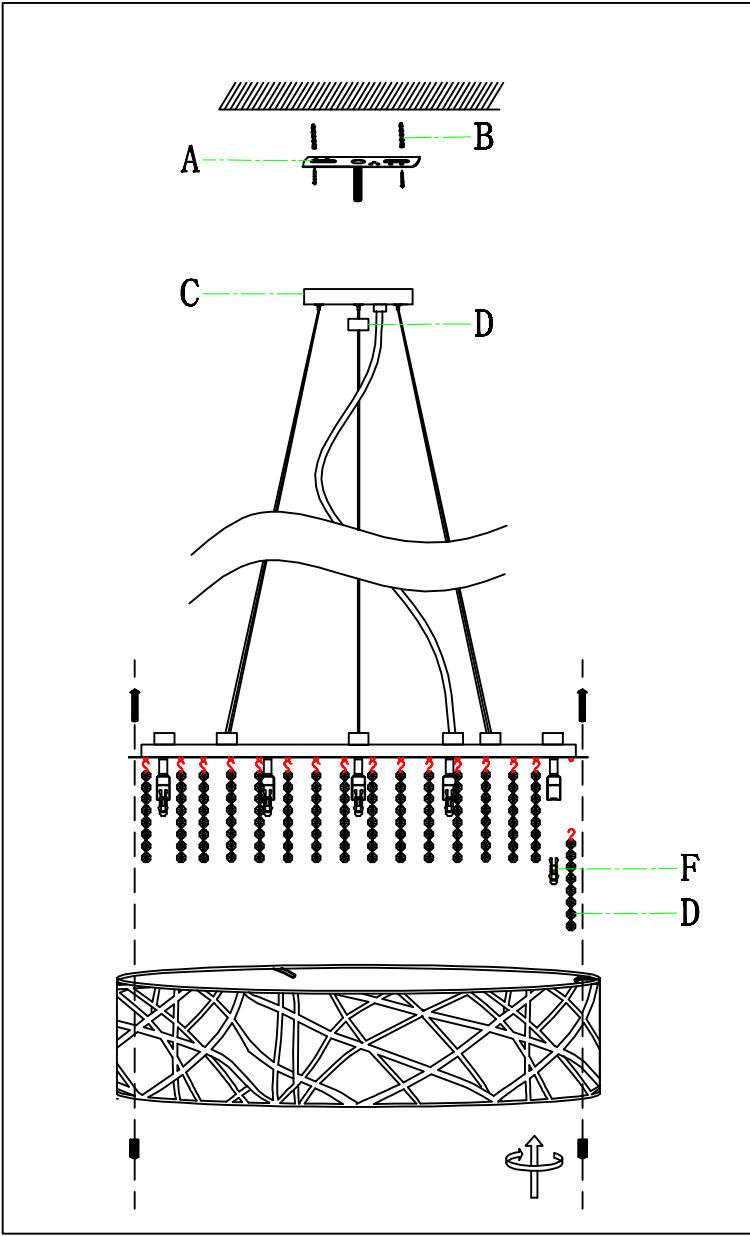
Caution: Xenon bulbs get very hot and may burn you. Always make sure bulbs are off for a minimum of 10 minutes before handling. Fixture may be dimmed using an electronic low voltage dimmer.

Bulbs (Included): G9X40W

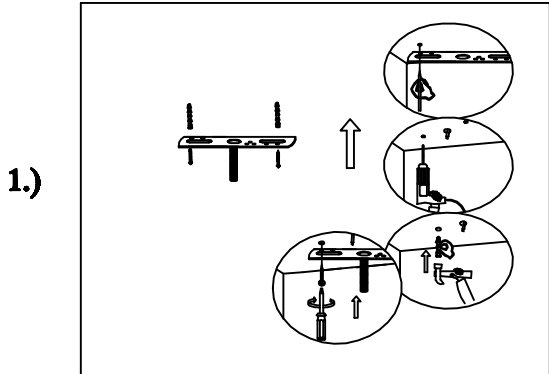
IMPORTANT: Turn off the power at the main fuse or circuit breaker box before starting installation



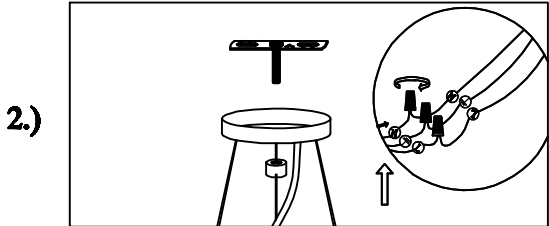
Locate all hardware & components before discarding packaging



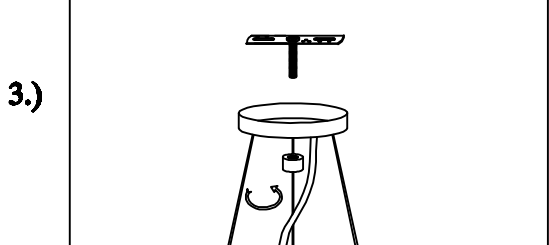
Cleaning & Care:
Clean with soft cloth and a mild detergent.
Do not use abrasive cleaner.



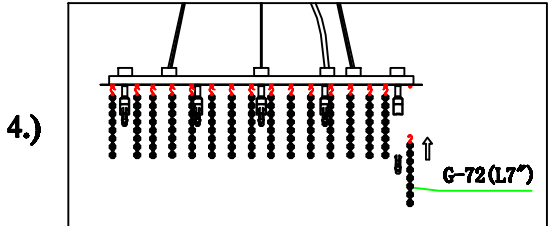
Step.1: Remove mounting bracket (A) from Canopy (C) to install to electrical box



Step.2: Wire fixture to wires in outlet box. Green wire is for Ground.



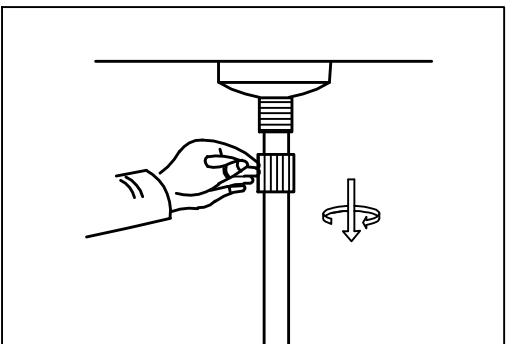
Step.3: Screw finials (D) onto mounting bracket (A) until canopy is flush with ceiling. Adjust the wire to desired length according to Page 3.



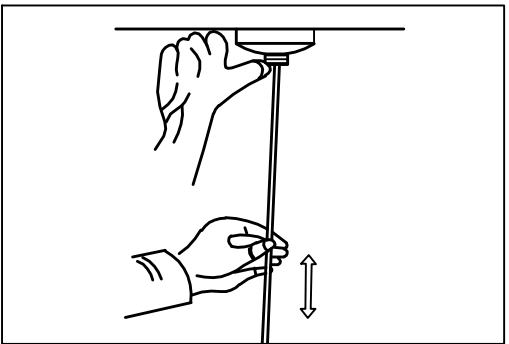
Step.4: Install G9 bulbs (F) and hang Crystal strands(G)

2

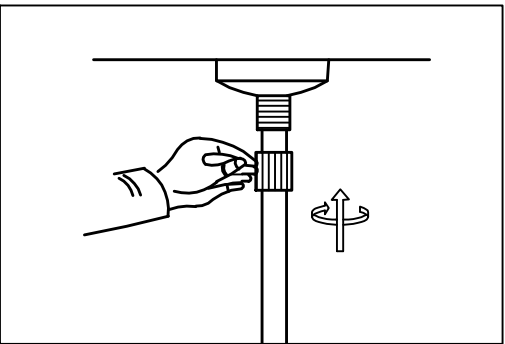
Contemporary
Lighting™



1.Loose the screw



2.Push the pin, and release the wire or the support cable to desired length.



3.Tighten the screw with the pin.