
PARTS INCLUDED

Please begin installation by accounting for and familiarizing yourself with all included parts.

Wire Connector



Outlet Box Screw(#8-32)



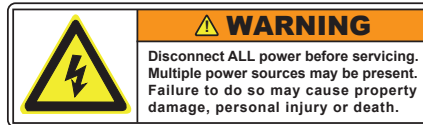
Outlet Box Screw(#6-32)



CSA / UL SAFETY REQUIREMENTS

CSA / UL requires that these IMPORTANT SAFETY INSTRUCTIONS be listed;

- Before starting installation of this fixture or removal of a previous fixture, disconnect the power by turning off the circuit breaker or by removing the fuse at the fuse box.
- Consult a qualified electrician if you have any electrical questions or need to replace the driver.

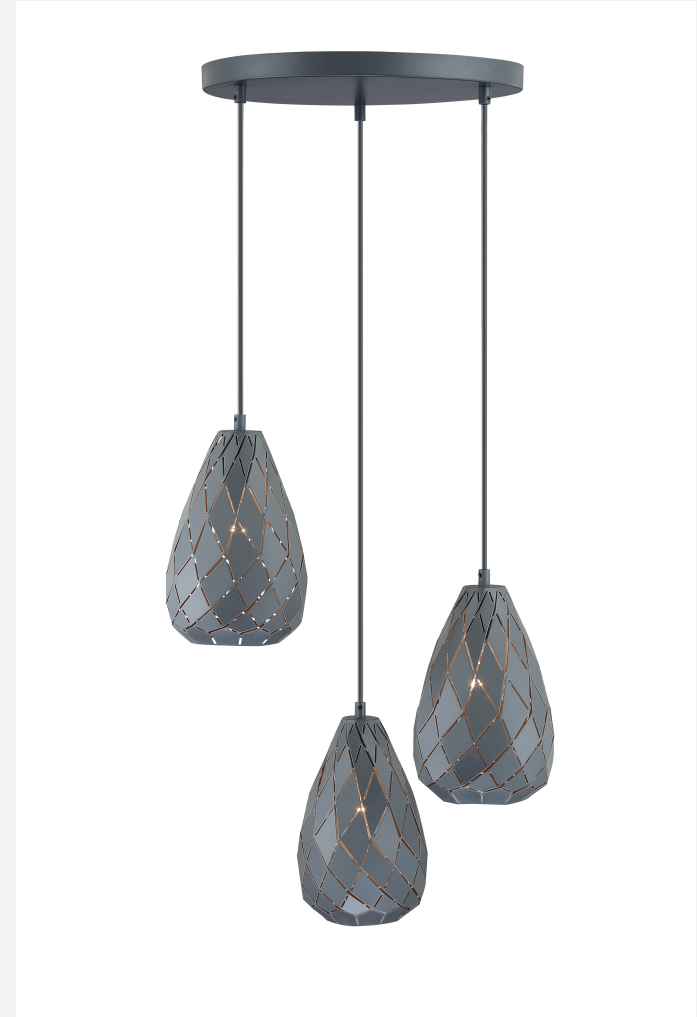


CARE INSTRUCTIONS

Arnsberg suggests using only micro fiber cleaning cloth to clean this fixture. If required, a slightly damp cleaning cloth may be used to spot clean. Do not use common household cleaners on this fixture, as the final finish may be damaged as a result. Enjoy your new Arnsberg fixture.

ONYX

300300335



Arnsberg
Das Licht

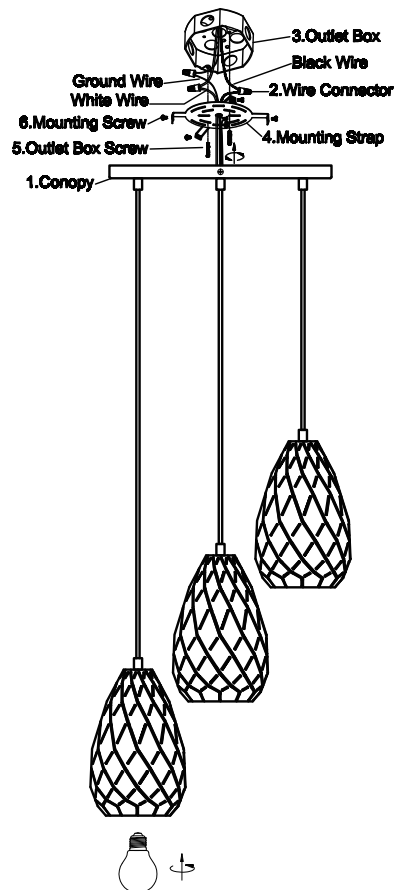
customerservice@arnsberg.com
www.arnsberg.com

Arnsberg

Das Licht

customerservice@arnsberg.com
www.arnsberg.com

MOUNTING INSTRUCTIONS



ASSEMBLY INSTRUCTIONS FOR

ONYX

300300335

ASSEMBLY INSTRUCTIONS

1, Mount the Mounting Strap (#4) to the Outlet Box (#3) (Make sure the heads of the Mounting Screw(#6) are facing outside when the Mounting Strap (#4) is attached to the Outlet Box(#3))

2, Connect the ground wire from the fixture to the ground wire from the Outlet Box (#3). Connect the white wire from the fixture to the white wire (neutral wire) from the Outlet Box (#3). Connect the black wire from the fixture to the black wire (live wire) of the Outlet Box (#3). Cover the connections using the Wire Connectors (#2). Wrap the wire connectors with electrical tape for a more secure connection. Position the wires back inside the Outlet Box (#3). Note: If you have electrical questions, consult your local electrical code for approved grounding methods.

3, Place the Canopy(#1) over the Outlet Box (#3), Allow the Heads of the Outlet Box Screws (#5) to come out through the large end of the keyholes of the Canopy (#1). Twist the Canopy (#1) until the heads of the Outlet Box Screws (#5) slide into the narrow ends of the keyholes. Screw the Outlet Box Screws (#5) to secure the Canopy (#1)

4, Before completing installation, please cover the lampshade on the corresponding rotary buttons positions of the chassis, and lock the lampshade according to the arrow direction.

5, Installation is complete, Turn on the power at the circuit breaker of the fuse box. Turn the light switch on to activate the fixture.