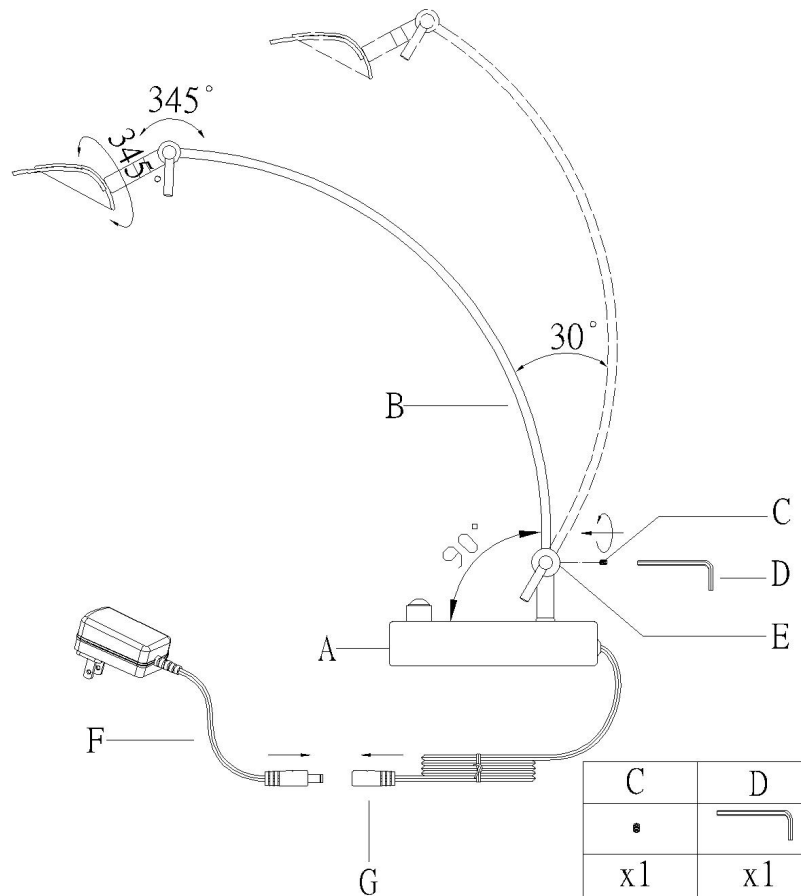


# ASSEMBLY INSTRUCTION FOR Esquire LED Desk Lamp

Model#5090-22

5090-22

1.0



1. Adjust tube(B) to meet 90° with base and tighten screw (C) onto (E) by wrench (D) about 6-7 circles..
2. Insert the adaptor (F) into power cord (G).

## GENERAL PRODUCT INFORMATION:

This product is suitable  
for dry locations only.



## IMPORTANT SAFETY INSTRUCTIONS:

This portable lamp has a polarized plug as a feature to reduce the risk of electric shock (one blade is larger than the other). This plug will fit in a polarized outlet only one way. If the plug does not fit fully in the outlet, reverse the plug. If it still does not fit, contact a qualified electrician. Do not use with an extension cord unless the plug can be fully inserted. **DO NOT ALTER THE PLUG .**

## PARTS DIAGRAM

- (1) \*screw (C)  
(1) \*Adapter (F)

- (1)\* wrench(D)