

**Commemorative**



## FEATURES:

- Solid Oak
- Construction Suitable for Traditional Burial or Cremation Use
- Oatmeal Duck Cloth Interior
- Satin Finish
- Rough Sawn Oak
- Cremation Friendly Liner
- Swing Bar Hardware
- Family Choices LifeSymbols® or Display Medallions Design Feature
- Family Choices LifeSymbols® or Display Medallions Design Feature (3)
- Safety Bottom
- Multiple Overlay (Lace, Realtree Camouflage or Tailored) Feature
- Adjustable Wood Bed and Mattress
- Pre-Interment Warranty
- Memorial Record® System
- Living Memorial® Program



Batesville reserves the right to change or update any products (including, without limitation, features, attributes and descriptions) at any time without notice. While Batesville strives to maintain accurate product information and images both digitally and in print, (1) product changes may potentially result in the existence of outdated product information and (2) actual products delivered may contain slight design/color variations. Customers are encouraged to visit [Batesville.com](http://Batesville.com) to obtain the most current product information and specifications needed for purchase decisions.

**Fireside**  
**269166**

**\$4,195**



Embroidered Cap Panel



LifeStories® Medallions



LifeSymbols® Design



Memorial Record® System



Living Memorial® Program



## FEATURES:

- Select Hardwood Solid and Veneer Construction
- Victorian Cherry Stain
- Rosetan Crepe Interior
- Hand-Rubbed High Gloss Finish
- Family Choices LifeSymbols® or Display Medallions Design Feature
- Wood Bars
- Swing Bar Hardware
- FailSafe® Liner
- Reversible Pillow and Overthrow
- Safety Bottom
- Adjustable Wood Bed and Mattress
- Pre-Interment Warranty
- MemorySafe® Drawer
- Memorial Record® System
- Living Memorial® Program



Batesville reserves the right to change or update any products (including, without limitation, features, attributes and descriptions) at any time without notice. While Batesville strives to maintain accurate product information and images both digitally and in print, (1) product changes may potentially result in the existence of outdated product information and (2) actual products delivered may contain slight design/color variations. Customers are encouraged to visit [Batesville.com](http://Batesville.com) to obtain the most current product information and specifications needed for purchase decisions.

Weston  
205163

\$4,095



Embroidered Cap Panel



LifeStories® Medallions



LifeSymbols® Design



MemorySafe® Drawer



Memorial Record® System



Living Memorial® Program



## FEATURES:

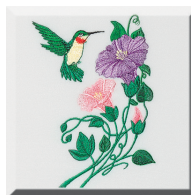
- Select Hardwood Construction
- Russet Stain
- Rosetan Crepe Interior
- Satin Finish
- Pre-Interment Warranty
- Swing Bar Hardware
- Fluted Design Accent
- Safety Bottom
- Reversible Pillow and Overthrow
- FailSafe® Liner
- Charpente® Interior System
- Decorative Casket LifeView Panel
- MemorySafe® Drawer
- Memorial Record® System
- Living Memorial® Program



**Edgemont**  
**239383**

**\$3,495**

Batesville reserves the right to change or update any products (including, without limitation, features, attributes and descriptions) at any time without notice. While Batesville strives to maintain accurate product information and images both digitally and in print, (1) product changes may potentially result in the existence of outdated product information and (2) actual products delivered may contain slight design/color variations. Customers are encouraged to visit [Batesville.com](http://Batesville.com) to obtain the most current product information and specifications needed for purchase decisions.



Embroidered Cap Panel



LifeView® Panel



MemorySafe® Drawer



Memorial Record® System



Living Memorial® Program





## FEATURES:

- Select Hardwood Solid and Veneer Construction
- Rosetan Crepe Interior
- Victorian Cherry Stain
- Satin Finish
- Family Choices LifeSymbols® or Display Medallions Design Feature
- Construction Suitable for Traditional Burial or Cremation Use
- Cremation Friendly Liner
- Safety Bottom
- Adjustable Wood Bed and Mattress
- Pre-Interment Warranty
- Memorial Record® System
- Living Memorial® Program



Batesville reserves the right to change or update any products (including, without limitation, features, attributes and descriptions) at any time without notice. While Batesville strives to maintain accurate product information and images both digitally and in print, (1) product changes may potentially result in the existence of outdated product information and (2) actual products delivered may contain slight design/color variations. Customers are encouraged to visit [Batesville.com](http://Batesville.com) to obtain the most current product information and specifications needed for purchase decisions.

Dryden  
274158

\$3,095



Embroidered Cap Panel



LifeStories® Medallions



LifeSymbols® Design



Memorial Record® System



Living Memorial® Program



## FEATURES:

- Select Hardwood Solid and Veneer Construction
- Pecan Stain
- Rosetan Crepe Interior
- Satin Finish
- Family Choices® LifeSymbols or Display Medallions Design Feature (1)
- Cremation Friendly Perforated Metal LifeStories Panel
- Decorative Casket LifeView Panel
- Safety Bottom
- Pre-Interment Warranty
- Memorial Record® System



Batesville reserves the right to change or update any products (including, without limitation, features, attributes and descriptions) at any time without notice. While Batesville strives to maintain accurate product information and images both digitally and in print, (1) product changes may potentially result in the existence of outdated product information and (2) actual products delivered may contain slight design/color variations. Customers are encouraged to visit [Batesville.com](http://Batesville.com) to obtain the most current product information and specifications needed for purchase decisions.

**Parkside**  
**258948**

**\$2,995**



Embroidered Cap Panel



LifeStories® Medallions



LifeSymbols® Design



LifeView® Panel



Memorial Record® System



Living Memorial® Program



## FEATURES:

- Constructed of 20 gauge carbon steel
- Champagne Velvet Interior
- Locking Mechanism Plus a One Piece Rubber Gasket
- Continuously Welded Bottom
- Each Casket Factory Tested for Quality Assurance
- Limited Warranty
- Interior Chemically Treated to Resist Rust and Corrosion
- Family Choices LifeSymbols® or Display Medallions Design Feature
- Swing Bar Hardware
- Adjustable Bed and Mattress



**M39 Huntington Green**  
**278177**

**\$2,795**

Batesville reserves the right to change or update any products (including, without limitation, features, attributes and descriptions) at any time without notice. While Batesville strives to maintain accurate product information and images both digitally and in print, (1) product changes may potentially result in the existence of outdated product information and (2) actual products delivered may contain slight design/color variations. Customers are encouraged to visit [Batesville.com](http://Batesville.com) to obtain the most current product information and specifications needed for purchase decisions.



Embroidered Cap Panel



LifeStories® Medallions



LifeSymbols® Design



Memorial Record® System



Living Memorial® Program





## FEATURES:

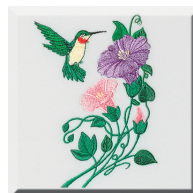
- Constructed of 20 gauge carbon steel
- Ivory Velvet Interior
- Locking Mechanism Plus a One Piece Rubber Gasket
- Continuously Welded Bottom
- Each Casket Factory Tested for Quality Assurance
- Limited Warranty
- Interior Chemically Treated to Resist Rust and Corrosion
- Family Choices LifeSymbols® or Display Medallions Design Feature
- Swing Bar Hardware
- Adjustable Bed and Mattress
- Memorial Record® System
- Living Memorial® Program



Batesville reserves the right to change or update any products (including, without limitation, features, attributes and descriptions) at any time without notice. While Batesville strives to maintain accurate product information and images both digitally and in print, (1) product changes may potentially result in the existence of outdated product information and (2) actual products delivered may contain slight design/color variations. Customers are encouraged to visit [Batesville.com](http://Batesville.com) to obtain the most current product information and specifications needed for purchase decisions.

**M39 Revere Silver**  
**271821**

**\$2,795**



Embroidered Cap Panel



LifeStories® Medallions



LifeSymbols® Design



Memorial Record® System



Living Memorial® Program





## FEATURES:

- Constructed of 20 gauge carbon steel
- Ivory Velvet Interior
- Locking Mechanism Plus a One Piece Rubber Gasket
- Continuously Welded Bottom
- Each Casket Factory Tested for Quality Assurance
- Limited Warranty
- Interior Chemically Treated to Resist Rust and Corrosion
- Family Choices LifeSymbols® or Display Medallions Design Feature
- Swing Bar Hardware
- Adjustable Bed and Mattress
- Memorial Record® System
- Living Memorial® Program



Batesville reserves the right to change or update any products (including, without limitation, features, attributes and descriptions) at any time without notice. While Batesville strives to maintain accurate product information and images both digitally and in print, (1) product changes may potentially result in the existence of outdated product information and (2) actual products delivered may contain slight design/color variations. Customers are encouraged to visit [Batesville.com](http://Batesville.com) to obtain the most current product information and specifications needed for purchase decisions.

**M39 Neopolitan Blue**  
**271819**

**\$2,795**



Embroidered Cap Panel



LifeStories® Medallions



LifeSymbols® Design



Memorial Record® System



Living Memorial® Program



## FEATURES:

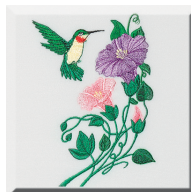
- Constructed of 20 gauge carbon steel
- Champagne Velvet Interior
- Locking Mechanism Plus a One Piece Rubber Gasket
- Continuously Welded Bottom
- Each Casket Factory Tested for Quality Assurance
- Limited Warranty
- Interior Chemically Treated to Resist Rust and Corrosion
- Family Choices LifeSymbols® or Display Medallions Design Feature
- Swing Bar Hardware
- Adjustable Bed and Mattress
- Memorial Record® System
- Living Memorial® Program



Batesville reserves the right to change or update any products (including, without limitation, features, attributes and descriptions) at any time without notice. While Batesville strives to maintain accurate product information and images both digitally and in print, (1) product changes may potentially result in the existence of outdated product information and (2) actual products delivered may contain slight design/color variations. Customers are encouraged to visit [Batesville.com](http://Batesville.com) to obtain the most current product information and specifications needed for purchase decisions.

**M39 Auburn**  
**271815**

**\$2,795**



Embroidered Cap Panel



LifeStories® Medallions



LifeSymbols® Design



Memorial Record® System



Living Memorial® Program



## FEATURES:

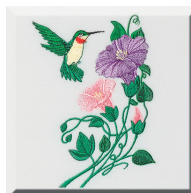
- 20 Gauge Steel
- Ivory Crepe Interior
- Locking Mechanism Plus a One Piece Rubber Gasket
- Continuously Welded Bottom
- Each Casket Factory Tested for Quality Assurance
- Limited Warranty
- Interior Chemically Treated to Resist Rust and Corrosion
- Family Choices LifeSymbols® or Display Medallions Design Feature (3)
- Swing Bar Hardware
- Adjustable Bed and Mattress
- Memorial Record® System
- Living Memorial® Program



**S01 Ocean Blue**  
**252121**

**\$2,795**

Batesville reserves the right to change or update any products (including, without limitation, features, attributes and descriptions) at any time without notice. While Batesville strives to maintain accurate product information and images both digitally and in print, (1) product changes may potentially result in the existence of outdated product information and (2) actual products delivered may contain slight design/color variations. Customers are encouraged to visit [Batesville.com](http://Batesville.com) to obtain the most current product information and specifications needed for purchase decisions.



Embroidered Cap Panel



LifeStories® Medallions



LifeSymbols® Design



Memorial Record® System



Living Memorial® Program





## FEATURES:

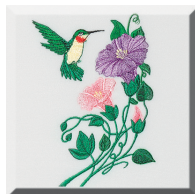
- 20 Gauge Steel
- Rosetan Crepe Interior
- Locking Mechanism Plus a One Piece Rubber Gasket
- Continuously Welded Bottom
- Each Casket Factory Tested for Quality Assurance
- Limited Warranty
- Interior Chemically Treated to Resist Rust and Corrosion
- Family Choices<sup>®</sup> LifeSymbols or Display Medallions Design Feature (1)
- Decorative Casket LifeView Panel
- Swing Bar Hardware
- Adjustable Bed and Mattress
- Memorial Record<sup>®</sup> System
- Living Memorial<sup>®</sup> Program



Batesville reserves the right to change or update any products (including, without limitation, features, attributes and descriptions) at any time without notice. While Batesville strives to maintain accurate product information and images both digitally and in print, (1) product changes may potentially result in the existence of outdated product information and (2) actual products delivered may contain slight design/color variations. Customers are encouraged to visit [Batesville.com](http://Batesville.com) to obtain the most current product information and specifications needed for purchase decisions.

**Q01 Heirloom Pewter**  
**242475**

**\$2,695**



Embroidered Cap Panel



LifeStories<sup>®</sup> Medallions



LifeView<sup>®</sup> Panel



LifeSymbols<sup>®</sup> Design



Memorial Record<sup>®</sup> System



Living Memorial<sup>®</sup> Program

# **Conventional**



### FEATURES:

- 20 Gauge Steel
- Swing Bar Hardware
- Ivory Crepe Interior
- Continuously Welded Bottom
- Adjustable Bed and Mattress
- Locking Mechanism Plus a One Piece Rubber Gasket
- Limited Warranty
- Choice of Optional Decorative Kit

28"

**NewPointe®**  
Constellation Collections

**Hercules Black-28**

**265526**

**\$3,395**

Batesville reserves the right to change or update any products (including, without limitation, features, attributes and descriptions) at any time without notice. While Batesville strives to maintain accurate product information and images both digitally and in print, (1) product changes may potentially result in the existence of outdated product information and (2) actual products delivered may contain slight design/color variations. Customers are encouraged to visit [Batesville.com](http://Batesville.com) to obtain the most current product information and specifications needed for purchase decisions.





## FEATURES:

- Select Hardwood Construction
- Antique Stain
- Rosetan Crepe Interior
- Satin Finish
- Wood Bars
- Swing Bar Hardware
- FailSafe® Liner
- Safety Bottom
- Adjustable Wood Bed and Mattress
- Pre-Interment Warranty
- Memorial Record® System
- Living Memorial® Program



Batesville reserves the right to change or update any products (including, without limitation, features, attributes and descriptions) at any time without notice. While Batesville strives to maintain accurate product information and images both digitally and in print, (1) product changes may potentially result in the existence of outdated product information and (2) actual products delivered may contain slight design/color variations. Customers are encouraged to visit [Batesville.com](http://Batesville.com) to obtain the most current product information and specifications needed for purchase decisions.

**Meridian**  
**146840**

**\$3,295**



Embroidered Cap Panel



Memorial Record® System



Living Memorial® Program



### FEATURES:

- Non-gasketed casket
- Swing Bar Hardware
- Ivory Crepe Interior
- Continuously Welded Bottom
- Adjustable Bed and Mattress
- Limited Warranty
- Choice of Optional Decorative Kit

**28" NGS**

**NewPointe®**  
Constellation Collections

**Hercules Black NGS-28**  
**265527**

**\$3,095**

Batesville reserves the right to change or update any products (including, without limitation, features, attributes and descriptions) at any time without notice. While Batesville strives to maintain accurate product information and images both digitally and in print, (1) product changes may potentially result in the existence of outdated product information and (2) actual products delivered may contain slight design/color variations. Customers are encouraged to visit [Batesville.com](http://Batesville.com) to obtain the most current product information and specifications needed for purchase decisions.

## FEATURES:

- Veneer Construction
- Construction Suitable for Traditional Burial or Cremation Use
- Rosetan Crepe Interior
- Cremation Friendly Liner
- Adjustable Wood Bed and Mattress
- Limited Warranty



**NewPointe®**  
Constellation Collections

**Libra Harvest Red**

**246021**

**\$3,095**

Batesville reserves the right to change or update any products (including, without limitation, features, attributes and descriptions) at any time without notice. While Batesville strives to maintain accurate product information and images both digitally and in print, (1) product changes may potentially result in the existence of outdated product information and (2) actual products delivered may contain slight design/color variations. Customers are encouraged to visit [Batesville.com](http://Batesville.com) to obtain the most current product information and specifications needed for purchase decisions.





## FEATURES:

- 20 Gauge Steel
- Moss pink crepe interior
- Locking Mechanism Plus a One Piece Rubber Gasket
- Continuously Welded Bottom
- Each Casket Factory Tested for Quality Assurance
- Limited Warranty
- Interior Chemically Treated to Resist Rust and Corrosion
- Shaded Finish
- Swing Bar Hardware
- Adjustable Bed and Mattress
- Memorial Record® System
- Living Memorial® Program



Batesville reserves the right to change or update any products (including, without limitation, features, attributes and descriptions) at any time without notice. While Batesville strives to maintain accurate product information and images both digitally and in print, (1) product changes may potentially result in the existence of outdated product information and (2) actual products delivered may contain slight design/color variations. Customers are encouraged to visit [Batesville.com](http://Batesville.com) to obtain the most current product information and specifications needed for purchase decisions.

**Q83 Primrose**  
**148043**

**\$2,895**



Embroidered Cap Panel



Memorial Record® System



Living Memorial® Program



#### FEATURES:

- 20 Gauge Steel
- Dual-Tone Finish
- Moss pink crepe interior
- Swing Bar Hardware
- Continuously Welded Bottom
- Adjustable Bed and Mattress
- Locking Mechanism Plus a One Piece Rubber Gasket
- Limited Warranty
- Choice of Optional Decorative Kit

**NewPointe®**  
Constellation Collections

**Argo Orchid**  
**278912**

**\$2,695**

Batesville reserves the right to change or update any products (including, without limitation, features, attributes and descriptions) at any time without notice. While Batesville strives to maintain accurate product information and images both digitally and in print, (1) product changes may potentially result in the existence of outdated product information and (2) actual products delivered may contain slight design/color variations. Customers are encouraged to visit [Batesville.com](http://Batesville.com) to obtain the most current product information and specifications needed for purchase decisions.



## FEATURES:

- 20 Gauge Steel
- Rosetan Crepe Interior
- Locking Mechanism Plus a One Piece Rubber Gasket
- Continuously Welded Bottom
- Each Casket Factory Tested for Quality Assurance
- Limited Warranty
- Interior Chemically Treated to Resist Rust and Corrosion
- Embossed Copper Color Bar
- Stationary Hardware
- Adjustable Bed and Mattress
- Memorial Record® System
- Living Memorial® Program



**S48 Vintage**  
**148075**

**\$2,695**

Batesville reserves the right to change or update any products (including, without limitation, features, attributes and descriptions) at any time without notice. While Batesville strives to maintain accurate product information and images both digitally and in print, (1) product changes may potentially result in the existence of outdated product information and (2) actual products delivered may contain slight design/color variations. Customers are encouraged to visit [Batesville.com](http://Batesville.com) to obtain the most current product information and specifications needed for purchase decisions.



Memorial Record® System



Living Memorial® Program





## FEATURES:

- 20 Gauge Steel
- Rosetan Crepe Interior
- Locking Mechanism Plus a One Piece Rubber Gasket
- Continuously Welded Bottom
- Each Casket Factory Tested for Quality Assurance
- Limited Warranty
- Interior Chemically Treated to Resist Rust and Corrosion
- Stationary Hardware
- Adjustable Bed and Mattress
- Memorial Record® System
- Living Memorial® Program



Batesville reserves the right to change or update any products (including, without limitation, features, attributes and descriptions) at any time without notice. While Batesville strives to maintain accurate product information and images both digitally and in print, (1) product changes may potentially result in the existence of outdated product information and (2) actual products delivered may contain slight design/color variations. Customers are encouraged to visit [Batesville.com](http://Batesville.com) to obtain the most current product information and specifications needed for purchase decisions.

**Q88 Roman**

**148031**

**\$2,695**



Embroidered Cap Panel



Memorial Record® System



Living Memorial® Program

**FEATURES:**

- 20 Gauge Steel
- Stationary Hardware
- Silver Crepe Interior
- Continuously Welded Bottom
- Adjustable Bed and Mattress
- Locking Mechanism Plus a One Piece Rubber Gasket
- Limited Warranty

**NewPointe®**  
Constellation Collections

**Pisces Silver**

**257956**

**\$2,495**

Batesville reserves the right to change or update any products (including, without limitation, features, attributes and descriptions) at any time without notice. While Batesville strives to maintain accurate product information and images both digitally and in print, (1) product changes may potentially result in the existence of outdated product information and (2) actual products delivered may contain slight design/color variations. Customers are encouraged to visit [Batesville.com](http://Batesville.com) to obtain the most current product information and specifications needed for purchase decisions.



## FEATURES:

- Veneer Construction
- Construction Suitable for Traditional Burial or Cremation Use
- Rosetan Crepe Interior
- Cremation Friendly Liner
- Cardboard Bed and Mattress
- Limited Warranty
- Adjustable Wood Bed and Mattress Available After July 2020

**NewPointe®**  
Constellation Collections

**Lyra Brown**  
**269152**

**\$1,995**

Batesville reserves the right to change or update any products (including, without limitation, features, attributes and descriptions) at any time without notice. While Batesville strives to maintain accurate product information and images both digitally and in print, (1) product changes may potentially result in the existence of outdated product information and (2) actual products delivered may contain slight design/color variations. Customers are encouraged to visit [Batesville.com](http://Batesville.com) to obtain the most current product information and specifications needed for purchase decisions.



#### **FEATURES:**

- Non-gasketed casket
- Stationary Hardware
- Ivory Crepe Interior
- Continuously Welded Bottom
- Adjustable Bed and Mattress
- Limited Warranty

**NewPointe®**  
Constellation Collections

**Gemini Silver**

**217298**

**\$1,995**

Batesville reserves the right to change or update any products (including, without limitation, features, attributes and descriptions) at any time without notice. While Batesville strives to maintain accurate product information and images both digitally and in print, (1) product changes may potentially result in the existence of outdated product information and (2) actual products delivered may contain slight design/color variations. Customers are encouraged to visit [Batesville.com](http://Batesville.com) to obtain the most current product information and specifications needed for purchase decisions.





#### **FEATURES:**

- Non-gasketed casket
- Stationary Hardware
- Ivory Crepe Interior
- Continuously Welded Bottom
- Adjustable Bed and Mattress
- Limited Warranty

**NewPointe®**  
Constellation Collections

**Apollo Silver**  
**221502**

**\$1,795**

Batesville reserves the right to change or update any products (including, without limitation, features, attributes and descriptions) at any time without notice. While Batesville strives to maintain accurate product information and images both digitally and in print, (1) product changes may potentially result in the existence of outdated product information and (2) actual products delivered may contain slight design/color variations. Customers are encouraged to visit [Batesville.com](http://Batesville.com) to obtain the most current product information and specifications needed for purchase decisions.

# **Rental Caskets**

## FEATURES:

- Solid oak construction
- Rosetan Crepe Interior



**DIMENSIONS<sup>®</sup>**  
BY BATESVILLE

Batesville reserves the right to change or update any products (including, without limitation, features, attributes and descriptions) at any time without notice. While Batesville strives to maintain accurate product information and images both digitally and in print, (1) product changes may potentially result in the existence of outdated product information and (2) actual products delivered may contain slight design/color variations. Customers are encouraged to visit [Batesville.com](http://Batesville.com) to obtain the most current product information and specifications needed for purchase decisions.

**Brockton Rental 27**  
**246588**

**\$1,395**



Embroidered Cap Panel

# **Alternative Container**





#### FEATURES:

- Veneer Construction
- Construction Suitable for Traditional Burial or Cremation Use
- Rosetan Crepe Interior
- Cremation Friendly Liner
- Cardboard Bed and Mattress
- Limited Warranty
- Adjustable Wood Bed and Mattress Available After July 2020

**NewPointe®**  
Constellation Collections

**Lyra Brown**  
**269152**

**\$1,995**

Batesville reserves the right to change or update any products (including, without limitation, features, attributes and descriptions) at any time without notice. While Batesville strives to maintain accurate product information and images both digitally and in print, (1) product changes may potentially result in the existence of outdated product information and (2) actual products delivered may contain slight design/color variations. Customers are encouraged to visit [Batesville.com](http://Batesville.com) to obtain the most current product information and specifications needed for purchase decisions.



#### FEATURES:

- Wood Composite Material
- Printed Woodgrain Finish
- Ivory Crepe Interior
- Designed Specifically for Cremation
- Limited Warranty

**NewPointe®**  
Constellation Collections

Batesville reserves the right to change or update any products (including, without limitation, features, attributes and descriptions) at any time without notice. While Batesville strives to maintain accurate product information and images both digitally and in print, (1) product changes may potentially result in the existence of outdated product information and (2) actual products delivered may contain slight design/color variations. Customers are encouraged to visit [Batesville.com](http://Batesville.com) to obtain the most current product information and specifications needed for purchase decisions.

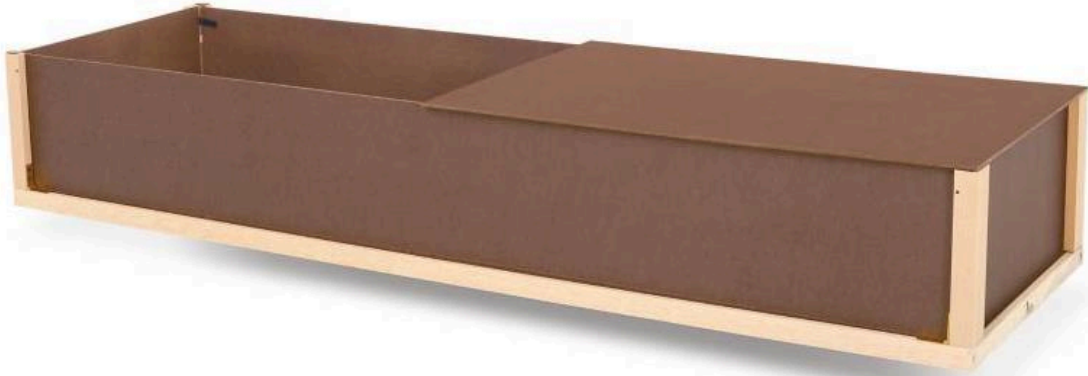
**Hadley Cremation Container**

**279185**

**\$1,395**

## FEATURES:

- Wood Composite Material
- Optional ivory crepe interior #263926 available for additional charge
- Order in multiples of 3 pieces



**Standard Brown Alternative Container**

**177130**

**\$695**

Batesville reserves the right to change or update any products (including, without limitation, features, attributes and descriptions) at any time without notice. While Batesville strives to maintain accurate product information and images both digitally and in print, (1) product changes may potentially result in the existence of outdated product information and (2) actual products delivered may contain slight design/color variations. Customers are encouraged to visit [Batesville.com](http://Batesville.com) to obtain the most current product information and specifications needed for purchase decisions.



Living Memorial® Program

## FEATURES:

- Cardboard construction
- Optional ivory crepe interior #251522 available for additional charge
- Order in multiples of 4 pieces



**Trayview® Alternative Container**  
**242414**

**\$395**

Batesville reserves the right to change or update any products (including, without limitation, features, attributes and descriptions) at any time without notice. While Batesville strives to maintain accurate product information and images both digitally and in print, (1) product changes may potentially result in the existence of outdated product information and (2) actual products delivered may contain slight design/color variations. Customers are encouraged to visit [Batesville.com](http://Batesville.com) to obtain the most current product information and specifications needed for purchase decisions.



Living Memorial® Program