

*It's not about caring for something,
it's caring for someone.*



Information Guide & Pricing List

GENERAL PRICE LIST FOR:

CAMPBELLFORD

77 SECOND STREET, BOX 1179,
CAMPBELLFORD, ON K0L 1L0
(705) 653-1179

Person in charge of day to day operations:
Jeffery C. Weaver 705-653-1179
jeff@weaverfuneralhomes.com
Weaver Family Funeral Home
(Campbellford) Ltd.

WARKWORTH

70 CHURCH STREET,
WARKWORTH, ON K0K 3K0
(705) 924-2312

Person in charge of day to day operations:
Jeffery C. Weaver 705-653-1179
jeff@weaverfuneralhomes.com
Weaver Family Funeral Home
(Campbellford) Ltd.

TRENTON WEST

170 DUNDAS STREET WEST,
TRENTON, ON K8V 3R1
(613) 392-3579

Person in charge of day to day operations:
Timothy C. Weaver 613-394-2433
tim@weaverfuneralhomes.com
Weaver Family Funeral Home
(Trenton) Ltd.

TRENTON LIFE CENTRE

29 BAY STREET,
TRENTON, ON K8V 1H2
(613) 394-2433

Person in charge of day to day operations:
Melanie Macdonald 613-394-2433
melanie@weaverfuneralhomes.com
Weaver Family Funeral Home
(Trenton) Ltd.

WEAVER Funeral Home was founded in 1945 when Ralph Weaver, a licensed Funeral Director, and his wife Virginia, purchased 170 Dundas St. West, now known as "Weaver-West." Ralph & Virginia took residence upstairs in the Funeral Home, where they dedicated themselves to their business, raising their children, and serving their community. In 1950 Ralph was joined by his brother, E.W. Al Weaver as a licensed Funeral Director. The two brothers worked side by side for the next fifteen years, running the local ambulance and funeral business that served Trenton and the surrounding communities until 1965, when Al and his wife Marion, purchased the funeral home in Campbellford, Ontario.

Al's eldest son Jeff and his wife Susan took over the reins of the business in 1987 and would eventually build and open a new funeral home in Trenton (Weaver-East) in 1996. Five years later the original Weaver Funeral Home location at 170 Dundas St. W. (Weaver-West) was purchased and returned into the family fold in 2001.

The Weaver legacy of service to bereaved families has now been represented by three generations with Tim Weaver, the eldest son of Jeff and Susan working in the family business since 1999. Tim advanced to the role of Chief Operating Officer, serving personally and managing the daily operations of staff that facilitate the funeral needs of our bereaved families.

There has been an incredible amount of change in funeral service since Ralph's humble beginnings in 1945. The traditional families of yesterday viewed funeral service as a respected, necessary ritual. These families knew they would hold a funeral service for their loved one - they simply had to decide where. The families of the present do not always depend on traditions like they used to and are not having funerals just because their grandmother did. Today's families are tech-savvy and rely on the Internet to research and seek more information. Yes, there are still many traditional families out there, but this group seems to be on the decline; the families of today have more focus on life and ceremonial recognition, personalization, and options of technology. It's reported that 97% of people now turn to the web to find information on products & services, including funerals and providers. This is good news that people can educate themselves about the available options, so they can make a well-informed decision. They can learn about burial & cremation, funeral service options, memorial &

tribute product offerings, and check into pricing. Families are also looking to their social network platforms to see what their peers recommend.

Since 2007, the Funeral Celebrant movement has been a big part of our process to provide new and customized options for our families that do not wish to have a formal, Clergy-led service.

Families in society today can be separated by great geographical distances, and attending gatherings and funeral ceremonies are not practical from a time or financial perspective. This is why we have developed our unique funeral Webcasting software. The ceremony can be streamed live and in "real" time, so that friends and relatives are able to virtually attend the service on our website, from anywhere in the world via the internet.

Weaver professional service offerings now include an exclusive, estate documentation settlement for each family we serve. A 30-minute phone interview with our partner Peacehold will result in a completed form package delivered to the executor's home, with directions for signatures, including addressed and prepaid envelopes to forward all the documents to the proper agencies for benefits, etc., and phone support for one full year after the funeral.

While the journey of bereaved families has changed over time, our goal as funeral professionals hasn't. We still are devoted to serving each family in the most compassionate and unique way by walking with them through the death and grief process. By creating healing and memorable experiences with our customized service options, we're confident that the families get exactly what they want, with a meaningful experience they need, from a funeral home they trust.

The communities we serve and our interactive work culture is the center of our success. Each of our team members strive to be their personal best, contributing in their own unique way by adding their personal touch.

Our focus is to continually improve the service we offer and help each family create a distinctive, memorable and personalized ceremony for their loved ones.



Funeral gatherings and ceremonies are a public means of expressing our beliefs and feelings about the death of someone loved. Funerals are the public venue for offering support to others and being supported in grief, both at the time of the funeral and into the future. Funerals make a social statement that says, *"come and support me."* Whether it is realized or not, those who choose not to have a funeral are saying, *"don't come support me."*

Funeral ceremonies serve as the gathering place for mourners. When we care about someone who has died or their family members, we attend the gathering if at all possible. Our physical presence is our most important show of support for the living. By attending the ceremony, we let everyone else there know that they are not alone in their grief. Unfortunately, our society is not always a demonstrative one, but at funeral gatherings we are *"allowed"* to embrace, to touch, to comfort. Words are not always adequate, so we are able to demonstrate our support in a non-verbal way. This physical show of support, is one of the most important healing aspects of meaningful funeral ceremonies and tributes.

Meaningful and personalized funerals can serve as wonderful points of departure for the "head understanding" of the death. Intellectually, funerals teach us that someone we loved is now dead, even though up until the funeral we may have denied this fact. When we contact the funeral home, set a time for the service or gathering, plan the ceremony, view the body, perhaps even choose clothing and jewelry for the body, we cannot avoid acknowledging that the person we love has died. When we see the casket or urn being lowered into the ground, we are witness to death's finality.

Healing in grief is not an event, but rather a process that unfolds for weeks, months or even years after the funeral. The funeral ceremony is a ritual of ending, but also marks the beginning of the healing process. A memorable and meaningful funeral ceremony that is personalized to the individual character and beliefs, can actually set a positive tone for the grief journey that is to come.

Frequently Asked Questions

Q. WHO IS RESPONSIBLE FOR FINAL ARRANGEMENTS?

A. The executor and/or next of kin bear legal responsibility in the disposition of the deceased. It is prudent for the executor to include the family in any decisions regarding final arrangements.

Q. IS EMBALMING REQUIRED IN ONTARIO?

A. Embalming is not required in Ontario, but may be necessary under some circumstances.

Q. CAN SERVICES BE PREARRANGED?

A. Yes, services can be prearranged through a funeral home or transfer service and can be prepaid if you wish.

Q. HOW MUCH DO FUNERALS & TRANSFER SERVICES COST?

A. Costs depend entirely on the goods and services selected by you. Every funeral director and transfer service operator is required by law to have price lists available to the public at no charge and without obligation.

Q. WHEN DO I FIND OUT THE COST (goods & services) SELECTED?

A. At the time the arrangements are agreed upon, the funeral director or transfer service operator must give you a written contract including the total price of the goods and services selected and estimate of any disbursements. The contract must be approved and signed by the person making the arrangements with the funeral director or transfer service operator.

Q. WHAT ARE CASH DISBURSEMENTS?

A. Cash disbursements are payments made by the funeral director on your behalf and might include items such as newspaper notices, clergy honoraria or flowers. Disbursements are charged to you at actual cost and if they appear on your contract, must be itemized and included in the total price.

Q. MUST A CASKET BE PLACED IN AN OUTSIDE CONTAINER FOR BURIAL?

A. This is not the law in Ontario. However, local customs vary and some cemeteries have by-laws requiring that outside containers be used for interment. For more information contact;

Cemetery Regulations, Ministry of Consumer Services; Tel: (416) 326-8393/1-800-889- 9768; TTY: (416) 229-6086 1-877-666-6545.

Q. WHAT IS A PREPAID SERVICE?

A. You may prearrange and prepay services and supplies by means of a contract between you and the funeral establishment or transfer service.

Q. WHAT HAPPENS TO MY MONEY?

A. You have two options: it can be held in trust for you at a bank or trust company, or you may have the option to purchase an insurance product.

Q. IS THE PRICE OF A PREPAID SERVICE GUARANTEED?

A. All funeral providers in Ontario MUST guarantee the price of all contracted funeral services that have been prepaid in advance.

Q. HOW DOES A GUARANTEE WORK?

A. At the time of death the funeral director or transfer service will calculate cost based on the current prices. If the principal plus interest or insurance death benefit is less than the cost of services, no further money is owed.

Q. WHAT IF THERE IS AN EXCESS OF FUNDS AFTER A GUARANTEED PREPAID FUNERAL HAS BEEN PROVIDED?

A. If you entered into a prepaid funeral services contract in Ontario after June 1, 1990 the balance, if any, of the prepayment funds that are in excess of the cost of delivering the services and supplies contracted for MUST be refunded to the estate. If you prepaid prior to June 1, 1990 the funds will be refunded at the funeral establishments discretion.

Frequently Asked Questions

Q. HOW ARE PREPAID FUNDS PROTECTED?

A. Legislation provides several means for ensuring protection of prepaid funds. At the time of prepayment, the funeral director or transfer service operator must provide the purchaser with a contract, signed by the purchaser and the funeral director, showing clearly the services you have selected and the monies you have paid. Within 10 days of the investment of the prepaid funds, the funeral establishment or transfer service operator must deliver to the purchaser an investment receipt from the financial institution that the investment has been made. If you do not receive a receipt within this time frame, we encourage you to contact the funeral home or transfer service. In addition, trust funds are inspected by the Board of Funeral Services of Ontario. Funeral establishments and transfer service operators must annually submit to the Board of Funeral Services, a Report of the Public Accountant on their trust funds. The Board of Funeral Services administers a Compensation Fund that provides compensation in the event of misappropriation of trust monies.

Q. WILL MY MONEY BE RETURNED IF I CHANGE MY MIND?

A. Yes. When a written request is received, all monies including principal and accrued interest must be refunded. However, the funeral home or transfer service may keep an administration fee of 10% of the funds to a maximum of \$350.00 if the contract is cancelled after thirty days. The financial institution or insurance company may also charge a cancellation fee.

Q. HOW DO I FIND INFORMATION ABOUT SERVICES & COSTS?

A. Funeral directors and transfer service operators welcome and encourage people to make such inquiries prior to or at the time of need. Call the funeral home or transfer service and request a price list. They must provide a price list without cost or obligation. You are encouraged to compare prices and services by obtaining price lists from several establishments.

Q. IS A CASKET REQUIRED BY LAW FOR CREMATION?

A. Yes, the body must be enclosed within a minimal cremation casket of combustible material.

Q. WHAT HAPPENS IF I DON'T WANT A TRADITIONAL FUNERAL?

A. All funeral homes must offer an inexpensive service known as 'direct disposition'.

Q. WHAT IS A DIRECT DISPOSITION?

A. This option includes the removal of the deceased from the place of death, the placement of the body in a cremation or burial casket, the delivery of the body to the cemetery or crematorium and the filing of necessary documentation. It does not include visitation or services with the body present.

Q. WITH DIRECT DISPOSITION MUST I HAVE CREMATION?

A. No. You can have either direct cremation or direct earth burial.

Q. WHY ARE CASKETS OPEN?

A. Often our first response to news of a death is "I can't believe it." In fact, many people who have had someone close to them die, report a period of "denial" prior to the visitation or funeral.

Viewing of the deceased in an open casket serves to acknowledge the reality of death as physical fact and helps to promote the subsequent process of grief and healing.

Q. DOES BURIAL COST MORE THAN CREMATION?

A. Both burial and cremation can be done simply and at low cost; but generally cremation is slightly less expensive. The important thing to remember is that the method of disposition is just part of the overall cost of a funeral. The total cost will depend on your personal preferences. Also, cremation does not limit your options, but can actually increase them by allowing more flexibility.

Q. DO I HAVE TO PAY IF I PREARRANGE A FUNERAL?

A. No. However, prepaying offers many advantages such as cost guarantees, but some prefer to simply outline their instructions and preferences, to help guide their family at such a stressful time. This information is kept at the funeral home on file and is easily accessible.

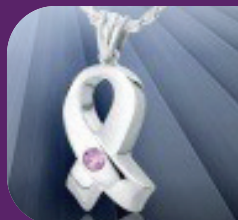
Frequently Asked Questions

Q. I'M NOT RELIGIOUS, WHY HAVE A SERVICE?

A. The gathering of family, friends and community at a time of a death is an important part of the grieving and healing process. A service acknowledges the significance of life and is of equal importance. Creative services celebrating the accomplishments in life, devoted to sharing memories with music, pictures and video can take place in the funeral home or almost anywhere else. Attendees of these gatherings gain the benefit of a healthy transference through sharing this memorialization.

Q. WHAT IS DONE WITH THE CREMATED BODY?

A. The cremated body may be retained by the family, interred in a cemetery, placed in a niche in a columbarium or scattered in a designated area of the cemetery.



A very popular trend today is to have a portion of the cremated remains placed in keepsake pendants, rings, or necklaces and are also used in the making of other keepsake jewelry.

Q. WHAT IS AN URN?

A. Urns are the containers used to store the cremated body and are usually constructed of wood, glass, or metal, with an unlimited number of styles and personalization options. They can be buried in a cemetery, just like a casket, or placed in a "niche" which is a space in a columbarium, usually located in cemeteries.

Professional & Staff Services General Price List

Professional Fee: \$1995 The professional guidance of licensed personnel which may include but is not limited to; 24/7 response to an initial request for services; all phone calls for coordination of ceremonial details, gathering of biographical and vital statistical information, filing of necessary authorizations and permits; including services relating to disposition, drafting and placing obituaries, planning, scheduling and creation of any personalized stationery including custom website, 24hr availability of funeral director by phone, including all overhead expenses relative to our business such as insurance, utilities, taxes, administrative costs, equipment and storage. The Professional Fee is payable whenever we provide services to you.

Funerals or Memorials Professional Fee: \$625 Funeral Director plus staff co-ordination of all rites and ceremonies, before, during and after they have been provided, including services and supplies provided by us, as well as those provided by third party suppliers (such as flowers and clergy) including procession to crematorium or cemetery of choice, within a 30km. radius of the funeral home.

Visitation Professional Fee: \$625 Director & Staff at the funeral home for visitation or informal gathering of family and visitors, including coffee, tea & biscuits, to last not more than a period of (2) two consecutive hours.

Additional Visitation Professional Service Fee: \$300 Staff at the funeral home for a second period of visitation, including same services as the Visitation Professional Fee, for a period of an additional two hours.

Graveside Funeral Professional Fee: \$1195 Director & 2 Staff for co-ordination of all rites & ceremonies, including tent/chair set-up, services and supplies provided by us, all complete at the cemetery of choice within a 30km radius of the funeral home. Vehicles extra. Processional vehicles will be an extra charge.

Professional & Staff Services

Private Family Viewing Professional Fee: \$300 1 Staff member to provide professional presentation of deceased for private viewing for 30 minutes.

Documentation Fee: \$195 Completion of all documents, death certificates, permits & forms necessary to carry out the services and supplies chosen, including but not limited to, death registration, proof of death certificates, burial permit, coroner's certificate for cremation, etc.

Embalming: \$575 (requires shelter of deceased fee) Preparation of the body including bathing, embalming process, dressing and placement into selected casket. Includes a standard hairdressing. Specialty colourings, etc. are at an additional cost.

Transport from place of death Fee: \$350 Vehicle and professional staff for transportation of the deceased from place of death, e.g. hospital, nursing home, residence, to our premises using a transfer vehicle, for distances not exceeding 30 km. Additional mileage charge \$2.75/km (one way only).

I.D. Preparation: \$120 Dressing and basic preparation for identification viewing without embalming.

Additional Staff: \$100 1 additional staff member for the initial transfer, if required for the safety of handlers that must transfer the deceased of a weight exceeding 200lbs.

Pallbearer Attendant Fee: \$100

Smart Serve Fee: \$200 1 Smart Serve staff member per 50 people, for the serving of alcohol, for up to 5 hours. \$25/hr each additional hour. (requires Special Occasions Permit from AGCO) Mandatory fee if reception is to be held in the funeral home.

Staff Attendance Fee: \$995 Staff requirements to facilitate services at a place of funeral ceremony other than our locations, including 2 staff attendance, set-up, direction and coordination of service details.

FACILITIES & EQUIPMENT:

Basic Facilities Fee: \$700 General use of building for office, administration, parking audio/visual equipment, other

equipment that would be used for a service at an offsite location, music licensing and all required maintenance.

Visitation Facility Fee: \$350 Coordination and set up of designated facilities, used for public visitation for a period to last not more than (2) hours. (Additional visitation - \$100 for 2 extra hours).

Funerals or Memorials Facility Fee: \$350 Coordination and set-up of designated facilities used for the ceremony for a period to last not more than (2) hours: 1 hour prior plus funeral service.

Funeral Reception Room Fee: \$495 Facilities, set-up & clean-up for gathering where food and beverages are to be served, coffee, tea & juice for the reception luncheon after the funeral ceremony, to last not more than 2 hours. (catering extra, dish service included)

Shelter of Deceased Fee: \$250 The set-up, maintenance and care of facilities for the sanitary care of the deceased, according to Provincial Health and Licensing Standards.

VEHICLES:

Utility Vehicle Fee: \$115 Utility van including driver for the purpose of but not limited to, registrations, deliveries of floral arrangements, permits, licensing and other pick-up or delivery of items to and from the funeral home or family residence (within a 30km radius of the funeral home.)

Pallbearer Vehicle Fee: \$195 Van/ \$375 Limousine with driver for pick-up and/or delivery of pall bearers from the funeral home or other place of funeral rite, delivery to the cemetery or other place of disposition (within a 30km radius of the funeral home) and return to origin.

Clergy or Lead Vehicle Fee: \$200 Driver & sedan transportation for the clergy or lead processional from the funeral home, (within a 30km radius) to the cemetery or final place of disposition, return to funeral home.

Funeral Coach Fee: \$395 Funeral coach including driver used for delivery of the casketed remains or cremated remains from the funeral home or other place of funeral rite (within a 30km radius of the funeral home), to the place of final disposition or cemetery.

Professional & Staff Services

Limousine Fee: \$375 7-passenger limousine for (3) hours, including driver for delivery of family members from their place of residence (within a 30km radius of the funeral home) to the cemetery or other place of final disposition and back to the residence or funeral home. (Overtime: per vehicle \$70 per 1/2hr.)

Transport to Crematorium: \$275 Driver and utility vehicle for the delivery of the casketed deceased to the crematorium, and retrieval of cremated body. (within a 30km radius of the funeral home.)

Additional Mileage Charge: \$2.85/km

Additional charge for any funeral home vehicle that is required to travel in excess of a 30km. radius of the funeral home, calculated on a one way basis.

OTHER OPTIONS AVAILABLE:

Provincial Statutory Holiday Fee: \$275 Flat rate surcharge for funeral home facilities and services requested by the family on any Provincially designated Statutory holiday.

Spring Interment Fee: \$395 (Saturdays add \$995).

Hairstylist Fee: \$75 Hairdressing fee when there is a need to call on a trained hairstylist to provide service for the deceased.

Funeral Director Proof of Death (free within 1 year of service)
.....(\$13.28+HST) **\$15**

Catered luncheon before /after the funeral ceremony which will allow for food and dish service. Includes: Sandwiches, cheese tray, deserts, coffee, tea and punch.
..... **\$15 pp.**

Beverage Service: Based on a minimum of 25 guests which will include wine, beer and soft drinks (brands vary on availability). Each additional guest there after is \$7.50 per person. This is required with Reception facility fee and Smart Serve Fee. **\$250**

Certified Funeral Celebrant (same day service/interment) **\$325**

Legacy DVD Tribute and coffee table book **\$299**

Extra legacy photo book..... **\$99**

Extra DVD tribute copies..... **\$15**

Peacehold – (estate settlement service) **\$899**

Balloon Release at Cemetery (50% deposit due at time of booking)..... **\$149**

Memorial snowflake keepsake (\$44.25+HST) **\$50**

Life Journey Celebration Candle **\$39**

Departed Heart Pins..... **\$6**

Funeral Service Notice delivery (maximum 30) **\$65**

Bookmarks..... **\$4 ea.**

Bookmarks 24 or more, group pricing..... **\$3 ea.**

PAYMENT TERMS:

A minimum 50% deposit is required from the contractee the day of the funeral contract being signed. Payment of the entire invoiced amount is required within 21 days following the delivery date of contracted funeral goods and services.

Any unpaid balance remaining after the 21 day period will be subject to 18% per annum interest charges. Major credit card and debit payments will be accepted by the contractor without penalty.

Custom Video Production & Webcasting

“Reminiscence” – One HD camera video recording for one location **\$395**

“Memorial Montage” – One HD camera video recording + montage to open and edit the presentation at two locations **\$595**

“Vivid Memories” – Two HD camera video montage + dynamic presentation with testimonial interviews of close family and friends at two locations **\$995**

Stationery Options

Entry Level Stationery:

- 1 Standard Register Book
- 75 Memorial Notice Cards (bifolds)
- 25 Standard Thank You Cards
- 8 Bookmarks
- 1 Donation Sign

TOTAL \$350 – Add \$50 for Custom Photo Theme

Standard Value Stationery:

- 1 Legacy DVD Tribute and coffee table book
- 1 Photographic Register Book
- 150 Memorial Notice Cards (bifolds) OR 50 Trifold Cards
- 50 Personalized Thank You Cards
- 12 Bookmarks
- 1 Life Journey Celebration Candle
- 2 Signs
- *100 Prayer Cards (optional)

TOTAL \$499 – Add \$50 for Custom Photo Theme

Complete Custom Stationery:

- 1 Legacy DVD Tribute and coffee table book
- 1 Customized Photographic Register Book
- 150 Memorial Notice Cards (bifolds) OR 50 Trifold Cards
(includes custom photo theme)
- 100 Service Bulletins
- 50 Personalized Thank You Cards
- 24 Bookmarks
- 2 Life Journey Celebration Candles
- 2 Signs
- *100 Prayer Cards (optional)

TOTAL \$699

Urn Selections

\$249.00 Cash and Carry Shelf - No Engraving

- | | |
|-------------|------------------------|
| US899-30034 | Rosewood |
| US19920008 | Sunset Scattering Tube |
| US150-00276 | Artisan Earthtone |
| US840-00010 | Pewter Antique |

\$295.00 Shelf - Complimentary Engraving

- | | |
|--------------|--------------------------|
| US210-30067 | Elegant Black |
| US150-00518 | Artisan Titan |
| US235-200011 | Sheet Bronze Cherry Tree |
| US210-30078 | Fish |

Urn Selections

\$395.00 Shelf - Complimentary Engraving

- | | |
|-------------|-----------------------|
| US310-00006 | Green Marble Cultured |
| US120-00003 | Allen Maple |
| US410-00436 | Heritage |
| US440-00449 | Aria Ascending |

\$495.00 Shelf - Complimentary Engraving

- | | |
|-------------|---|
| US315-00002 | Econo St-Laurent with
UA200-00012 - Tree |
| US450-00005 | Blue Butterfly |
| US105-20001 | London Chest |
| US210-30068 | Ashen Bronze |

URN BURIAL VAULT OPTIONS:

Dewitt Gold (inside 12x12x12in) gold, concrete**\$895**

CASKET BURIAL VAULT OPTIONS;

(D.G. Young) Vault Company

D.G. Young - Concrete Vault – (91x34x36in) concrete non-sealing casket burial vault (grave dressing, tent, chairs included)**\$1595**

D.G. Young - Gold Vault – (91x34x36in) gold, sealing concrete casket burial vault (grave dressing, tent & chairs)**\$1695**

D.G. Young Oxford Vault – (91x34x36in) copper with vinyl interior & sealed casket burial vault (grave dressing, tent, chairs included)**\$2250**

D.G. Young Tremont – (91x34x36in) church window, vinyl lined, rubber sealing, concrete casket burial vault (grave dressing, tent, chairs included)**\$2895**

Further options are available for stainless steel and copper-lined concrete burial vaults.

Statutory Holiday vault fee:**\$125**

Grave Dressing Fee**\$549**

Set-up of safe access to grave opening including but not limited to, casket lowering device, ornamental grass, lectern, tent and chairs for facilitation of the committal service at the cemetery. (There will be a \$125 surcharge for services on any weekend or provincial statutory holiday.)

Grave Dressing Deluxe**\$889**

All of the above with 20'x20' tent, 24 chairs, podium and sound system.

Cremation Jewellery



Legacy Expressions



Diamond Edge
Teardrop Ornament



Cross



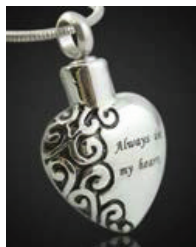
Heart Cremation
Pendant



Silver Indented Oval



Gravurecraft J-100
Gold/Silver Cross



Gravurecraft J-1010
Heart Pendant



Gravurecraft J-1020
Drop



Gravurecraft J-1100
Circular Pendant

See Funeral Director for specific pricing

Casket Selections

Elmwood Cardboard Cremation Casket.....	\$249
99C insert (Cremation Casket Insert, particle board).....	\$299
Whaley 230 Oversize Wooden Particle Board (75x28x18.5).	\$489
Northern Eden 102 100% Solid Poplar (77x27x13; Nature Cotton Interior).....	\$595
Northern 60 Cloth (blue cloth, white taffeta, long metal bar).....	\$995
Northern 70 Grey (blue particle board, white interior)	\$1295
Northern 70 Embossed (blue cloth, white taffeta)	\$1495
Northern 526W Norway (poplar veneer, satin finish, rosetan crepe)	\$1695
Northern 405 Delta Pine (solid pine, satin finish, rosetan crepe)	\$1995
Northern 504D Durham (poplar veneer, satin finish, white satin).....	\$1995
Northern 101 Eden (Enviro-Casket™ solid Poplar, satin finish, natural cotton)	\$1995
Northern 28 Carter (79.5x26x21; walnut/mahogany finish, rosetan interior).....	\$2195
Northern 33 Carlton (80x28x22; ash finish, rose tan crepe interior).....	\$2695
Northern 650 Rougemont (80x28x22; oak-gloss finish, rose tan interior).....	\$2795
Northern 899 Windsor (solid poplar, satin finish, rosetan crepe)	\$2895
Northern 500 Rose Arbor (81x27x21.5; mahogany-gloss, pink interior).	\$2995
Northern 707 Homestead (solid maple, gloss finish, rosetan crepe).....	\$2995
Northern NL06 Hilton (solid poplar, gloss finish, eggshell velvet)	\$2995
Northern 51 Brunswick (solid oak, satin finish, rosetan crepe)	\$3295
Northern NL01 Westminster (solid mahogany, gloss finish, velvet buntufted).....	\$3595
Custom Colour Casket #33 Solid Ash (80x28x22; Rose tan crepe Interior, available in colour paint or camo fabric (other fabric could be used if time and availability permits)...	\$3995
Northern 23 Cambrian (82.5x29x23; oak-gloss finish, toast interior).....	\$4195

Rental Caskets: (insert included)

Northern 33 Carlton Rental (solid ash, gloss finish, rosetan crepe)	\$1795
Northern 707 Homestead Rental (solid maple, gloss finish, rosetan crepe)	\$1995

Metal Caskets: (not suitable for cremation)

Northern N201 Franklin Orchid (20 gauge steel, rosetan crepe)	\$2495
Northern N208 Truman Brown (20 gauge steel, rosetan crepe)	\$2495
Northern N212 Viking Mirrored (20 Gauge Steel, rosetan crepe)	\$2995



99C Insert



Northern Eden 102



Northern 60 Cloth



Northern 70 Grey



Northern 70 Embossed



Northern 526W Norway



Northern 405 Delta Pine



Northern 504D Durham



Northern 101 Eden



Northern 33 Carlton



Northern 650 Rougemont



Northern 899 Windsor



Northern 500 Rose Arbor



Northern 707 Homestead



Northern NL06 Hilton



Northern 51 Brunswick



Northern NL01 Westminster



Northern 23 Cambrian



Northern 33 Carlton Rental



Northern N201 Franklin Orchid

We have many casket manufacturers and suppliers that offer a myriad of casket options and selections. Please ask your funeral planner for further details and pricing.

Supporting Our Community Partners



Trenton



CAMPBELLFORD
MEMORIAL HOSPITAL



100+ Women Who Care Quinte



CANADA

Trivia Night



Trenton
& Campbellford



Warkworth Maple
Syrup Festival



Community Events
Webpage

St. Peters Catholic Church
Bulletins & Calendar



REINVENT
TRADITION

CAMPBELLFORD

77 SECOND ST., BOX 1179
CAMPBELLFORD, ON
K0L 1L0
PHONE: (705) 653-1179

TRENTON LIFE CENTRE

29 BAY STREET
TRENTON, ON
K8V 1H2
PHONE: (613) 394-2433

TRENTON WEST

170 DUNDAS STREET W.
TRENTON, ON
K8V 3R1
PHONE: (613) 392-3579

WARKWORTH

70 CHURCH STREET
WARKWORTH, ON
K0K 3K0
PHONE: (705) 924-2312

info@weaverfuneralhomes.com