



Walnut Lawn

F U N E R A L H O M E

DeGraffenreid-Wood-Crematory



Pre-Planning and Bereavement Guide

2001 West Walnut Lawn Street, Springfield, MO 65807
Telephone: 417-886-6127 | info@walnutlawnfuneralhome.com
www.walnutlawnfuneralhome.com

Welcome to the Walnut Lawn Funeral Home, Ltd. DeGraffenreid-Wood-Crematory Pre-planning and Bereavement Guide

Walnut Lawn Funeral Home, Ltd. – DeGraffenreid-Wood-Crematory of Springfield, MO, is a local, family-owned and operated full service funeral home and crematory. We are personally committed to providing “Tender Moments – Tender Care” services with “Our Family Serving Your Family” from the very first call.

From the moment you arrive at our home, you will be warmly welcomed and receive compassionate attention from our professional and caring team. We believe that grief is as unique as each person, and that there is healing in meaning-filled ceremonies. We are here ready to listen, understand, and gently guide you and your family on your grief journey, helping you create healing experiences in keeping with your wishes.

Contents

Our History	2
Our Family	4
We Do Everything... Because We Care.....	6
Pre-Arranged Funeral Planning	9
Pre-Planning / Planning Ahead.....	10
Relieve Your Family's Burden	11
Funeral Arrangements	12
Final Arrangement Service Plans.....	13
Cremation.....	14
Cemetery-Burial Containers - Monuments.....	15
Merchandise	16
What to Do When a Death Occurs.....	17
Helpful Information	19
Eulogies.....	20
Video Tribute	21
Preferred Celebration of Life Catering Services	22
Veterans Benefits.....	23
Funeral Etiquette	24
Preserving Memories of A Lifetime	25
After the Funeral.....	26
Social Security	27
What is Grief?	28
Helping a Friend or Neighbor Cope With Loss.....	31
Bereavement & Support Services.....	32
Live Well Silver and Gold Club of Southwest Missouri.....	33
Legal Issues	34
Probate	36
To My Family and Loved Ones.....	38
Important Notes	43

Celebrating Life's Memories



**The most important person in your life
becomes the most important person in our life.**

Our History

Walnut Lawn Funeral Home, Ltd. was founded in 1989 by the DeGraffenreid and Wood families. It was founded on the principles of providing high quality and respectful funeral services through “Tender Moments – Tender Care” by “Our Family Serving Your Family.” Prior to moving to Springfield, Bobby and Ruth owned, operated, and resided in Wood Funeral Home in Hartville, MO, where they also raised their three children. In 1993, Bobby and Ruth Wood purchased the DeGraffenreid family share of Walnut Lawn Funeral Home to be the sole owners. In 2013, an on-site crematory was added; the funeral home name changed to Walnut Lawn Funeral Home, Ltd. – DeGraffenreid-Wood-Crematory. In 2018, upon Bobby and Ruth’s retirement, their daughter, Dr. Ruth Ann Wood-Humiston became the second generation of the Wood family to own the funeral home and crematory.

In 2021, Dr. Ruth Ann’s son, Gabriel Humiston, is the third generation to be an active part of the funeral home as a preneed and insurance agent, working towards his requirements to be a licensed funeral director.

Along with Dr. Ruth Ann, the dedicated, caring, and detail-focused team at Walnut Lawn Funeral Home, Ltd. – DeGraffenreid-Wood-Crematory is our greatest strength and the heart of all we do for our families. Our team is very much a family of genuinely compassionate people with unmatched empathy and intuition, bringing healing to families through their warmth, sincerity, and care. All team members are highly trained to assist families and to console those who are grieving, helping them find healing.

Warm, Spacious, Beautiful and Renovated Facility

At Walnut Lawn Funeral Home, Ltd. – DeGraffenreid-Wood-Crematory is like home with our beautiful and fully renovated facility with both small and large chapels and visitation rooms, and comfortable spaces that are warm and inviting. We also have a well-appointed celebration reception area, offering a relaxed and welcoming atmosphere where families and friends can gather to share special moments with food and fellowship.



Bobby Dean & Ruth Wood

- Founders
- Funeral Directors
- Embalmer (Bobby)



Dr. Ruth Ann Wood-Humiston

- Second Generation Owner
- Funeral Director
- Pre-need Counselor
- Certified Crematory Operator
- Insurance Producer
- Notary

Bobby Dean and Ruth Wood, are the founders and funeral directors/embalmer of Walnut Lawn Funeral Home, Ltd. - DeGraffenreid-Wood-Crematory. In 2014, Bobby Wood celebrated his 50th anniversary in the funeral profession as a licensed funeral director and embalmer. Bobby began working in the funeral business as a young teenager, for the local funeral home owner in Hartville, MO. This experience led to his life-long calling of ministering to families in the funeral profession. He attended Missouri State University in Springfield, MO, and while attending college and driving an ambulance for a local ambulance company, he met his wife, Ruth, who was attending St. John's School of Nursing. Ruth is a registered nurse graduate of St. John's School of Nursing and a licensed funeral director who has worked diligently beside Bobby, to manage the funeral home business affairs and care for grieving families. In 2011, Ruth received her 50-year nursing certificate. The newlyweds moved to Dallas, Texas, for Bobby to attend and graduate from the Dallas Gupton-Jones Institute of Mortuary Science. The couple returned to Missouri to eventually open their own funeral home in Hartville, MO, Wood Funeral Home. They raised their three children in the family funeral home; all three of their children, Herb, Ruth Ann, and Malinda, are also licensed funeral directors who have careers in air conditioning/refrigeration maintenance and education, respectively.

Bobby and Ruth are members of the Battlefield First Baptist Church, Battlefield, MO. Bobby and Ruth have been active in their community through different organizations including; Bobby as a Abou Ben Adhem Shriner, Rotarian, and member of the Masonic Lodge. Both have been active with Lion's Club and Eastern Star. Bobby is a past president of Missouri Funeral Trust.

Even though the funeral profession has been Bobby and Ruth's life work, they enjoy spending time with their family, cheering on their four grandsons in their various sporting, music and horse events, fishing, raising and showing horses with a few world champions to their credit that they have bred and raised.

Both Bobby and Ruth are well-respected servants in the funeral industry, where families have entrusted them to take care of generations of loved ones with "Tender Moments-Tender Care" with their "Family Serving Your Family."

Dr. Ruth Ann Wood-Humiston, daughter of Bobby and Ruth Wood, is a second generation funeral director/pre-need counselor and owner of Walnut Lawn Funeral Home. She brings a wealth of experience in her background as an educator, business owner, and as a licensed funeral director of over 30 years, to her position as the second generation owner of Walnut Lawn Funeral Home. She is also Certified Crematory Operator through the National Funeral Directors Association.

Ruth Ann has a Doctor of Philosophy (PhD) degree in special education from the University of Missouri-Columbia; Specialist and Master's degrees in educational administration from Missouri State University; and a Bachelor of Arts degree from Drury University with a double major in psychology and elementary education, and a minor in music. Ruth Ann began working alongside her parents in the family-owned funeral home at a very young age. Along with her experience in the funeral profession, Ruth Ann also has extensive experience as a teacher, college professor, school administrator. She founded and owned Little Angels Learning Academy, an accredited and award-winning early childhood program in southwest Springfield, Missouri, for over 19 years until its sale in February of 2022.

Ruth Ann makes her home in the Springfield area with her husband, Richard. Richard serves alongside Ruth Ann as building project manager and security. She is the proud mother of two sons, Michael and Gabriel. Her family attends Sac River Cowboy Church. They enjoy all types of sports, raising and showing horses, fishing and traveling, as well as music and theater.

"Spectacular! Walnut Lawn Funeral Home went above and beyond my expectations, with a complicated funeral and wake that started in Springfield, Missouri, and ended in Chicago, Illinois, and they did it all. Ruth Ann and her team made this a stress free event for us and we are very pleased with their service."

Bill Baunach



Local family-owned and operated



Our Family

We are in this profession because we care about preserving and honoring the memories of precious lives. Our professional staff are committed to serving you with unwavering compassion and care.

Our Mission

Our mission is to provide excellent, dignified, and unique services to celebrate a person's life, as well as to support their families and friends with compassion, helping them on the journey to heal.

Our Vision

Everyone in our community will be remembered, honored, and memorialized at the end-of-life. To be recognized as one of the finest providers of end-of-life services and facilities.

Our Core Values

You are part of our FAMILY

Provide HONEST COMPASSIONATE care

Be RESPECTFUL

EXCEED expectations

Operate ETHICALLY and PROFESSIONALLY with INTEGRITY

Be INNOVATIVE

RESPECTFUL of all religious beliefs and customs

Services for ALL budgets

PROFESSIONALISM at ALL times

GUIDANCE by Christian Principles

Be a force of GOOD within our community

Moving Forward With You

Edward Jones has been serving clients for nearly 100 years. Throughout this time we have assisted many families just like yours. Our priority is helping you achieve peace of mind during life's most troubling moments.

Our approach will assist you with many of the concerns you may have. Please allow us to take on the financial burdens you may be facing.

Our services include but are not limited to:

- Assess your current financial situation
- Assist with prioritizing financial responsibilities
- Navigate the necessary paperwork for life insurance policies
- Estate and Legacy Strategies
- Work with you to complete a new savings and spending plan
- Help create a comfortable and confident financial future



Weston Kissee, AAMS

1533 West Battlefield
Springfield, MO 65807
417-877-1763
weston.kissee@edwardjones.com



Member SIPC



New Beginnings and Dignity in Life's Journey...

Hospice

Designed to meet physical, spiritual and emotional needs of our clients and families facing end-of-life health care needs.

Home Health

Skilled Nursing, Physical Therapy, Occupational Therapy, Speech Therapy, Home Health Aides, Medical Social Work

Private Duty Care & Medicaid Funded Services

Companion Care, Housekeeping, Assistance with Mobility, Medication Set-Ups, Personal Care & MORE!

Pharmacy Services

Medication management made simple. Phoenix Home Care Pharmacy will package your routine medications according to the time of day they are prescribed and deliver them to your home.

Private Duty Nursing & Personal Care

Programs provide Nursing, Personal Care, Advanced Personal Care for Children and Young Adults with Specialized Healthcare Needs.

417-881-7442

1839 E. Independence St, Ste K
Springfield, MO 65804
www.phoenixhomehc.com



We Do Everything... Because We Care

Sensitive, Intuitive, Personal Attention

When experiencing the loss of a loved one, there may be emotional suffering and pain with intense feelings. The team at Walnut Lawn Funeral Home, Ltd. – DeGraffenreid-Wood-Crematory considers it an honor and privilege to offer gentle guidance to care for every detail, to fulfill wishes, and to create healing ceremonies for those who are grieving.

“Thru my life I have lost many dear ones and have been to several funeral homes. However, until my husband died, I had never had such a personal, warm, caring experience with a funeral home such as Walnut Lawn. Now for you all to care about our upcoming holidays goes beyond what I could ever have imagined. Please know I am so impressed and grateful for each and every one of you. So much more caring from you than one could ever expect. Thank you so much.

Sandie Kaminski



Compassionate, Thorough, Professional Care

Walnut Lawn Funeral Home, Ltd. – DeGraffenreid-Wood-Crematory, employs a caring team of professionals to accommodate the unique needs of all families. This team, along with the Wood family, includes funeral directors and embalmers, a certified crematory operator, pre-need counselors, insurance agents, funeral assistants, hosts and hostesses, notaries, AfterCare and community outreach specialist, and support personnel such as ministers/officiants/celebrants and musicians who we work with closely for our families.

“This funeral home went above and beyond for our family. They were more than just a place providing a service. Their kindness, sympathy, understanding and caring will never be forgotten. The chapel was beautiful, our family member looked wonderful. The slide show and music provided during the ceremony was perfectly put together. From the first interaction with them to the final goodbye at graveside they were there for my husband's aunt and all of our family. They handled difficult relatives with grace and patience. They truly provide a great experience in the darkest moments of our life. They have made us customers for life, or should I say for death. Thank you Walnut Lawn Funeral Home.

Allison Green



Meaningful Ceremonies – Healing Experiences

Ceremony speaks for us when words fail. No matter the location, size, or style of the funeral, celebration or gathering, our team creates meaningful ceremonies, acts of love that establish the significance of a loved one's life, while fostering the healing journey for family and friends.



Patient, Respectful, Thoughtful Planning

When we visit with a family, we listen to learn who their loved one was, take time to understand who they are, and engage in comfortable conversation to discover the family's values and desires. Ultimate decisions are always in the hands of the family, as we strive to personalize services down to the finest detail.

“We received excellent care and communication from Josh as he took care of every detail of my sister's funeral. He completely understood that it was all so overwhelming and difficult to process at such an emotional time. He went over and above to have everything done in time before family had to return to Africa. He was even able to put a rush on getting the monument delivered, of which, we were so very grateful. Thank you, Josh, for everything you have done for us. We deeply appreciate it.”

Renee Damron

Special Calling and Ministry

Just as our loved ones leave a unique imprint on our hearts, the families we serve leave a special impression on our lives. They acquaint us with the person who has passed, by telling humorous stories and sharing cherished memories. They trust us to care for their beloved with dignity and invite us into their families for a brief time, allowing us to walk alongside them in their most intimate moment of grief and intense emotions. At Walnut Lawn Funeral Home, Ltd., we are deeply humbled in our calling and honored to minister to our families.



“Dr. Ruth Ann Wood-Humiston and the Staff of Walnut Lawn/DeGraffenreid-Wood-Crematory, Thank you for the empathy and prompt attention we received during the Audra Brown cremation. In our time of grief, it was a comfort knowing that caring and competent professionals were assisting us. I would not hesitate recommending Walnut Lawn to others.”

Debra K. Brown

Providing Compassionate Care - Exceeding Expectations

Officiants

Our list of professional officiants, whether clergy or non-religious celebrants, will design and lead a meaningful and highly personalized tribute to your loved one's life.



Military Honors

We are proud to assist those who served in the military. Our staff will secure the benefits and honors our veterans so justly deserve.



Flowers

We facilitate the design and ordering of flowers for a loved one's service with the family. This allows quality control on knowing what is ordered and making sure it is fulfilled as designed. Floral ordering may also be done by family and friends by visiting the person's obituary on our website (walnutlawnfuneralhome.com). The order is filled by a local florist.



Memory Tables

Displaying items of importance to your loved one is a way of telling his or her life story.



Life Legacy Video Tributes

Tell the story of a lifetime through the sharing of photos with our Life Legacy video tribute.

We can upload the tribute to our website for all to view.



Special Music

Everyone has a special song or piece of music.

We can arrange for a variety of musical performers or we can download the music for you.



Live Broadcasts

Regardless of age, travel restrictions, work, illness or expense, you can invite anyone located anywhere in the world to be a part of the ceremony via the Internet for a live broadcast of the service.

PRE-ARRANGED Funeral Planning

There are many reasons that pre-planning your funeral is not the only beneficial to you, but also to your entire family.

We have many flexible options for pre-arranging a funeral. We recommend that you consider making your funeral arrangements ahead of time. Pre-arrangement offers you more than just the peace of mind of knowing your wishes will be met. It also ensures that your family does not have to bear the financial or emotional burden of planning a funeral. Their attention should be paid to the emotional needs of your family and friends, not to the numerous details of arranging a funeral service.

We offer a complete selection of pre-arrangement programs to suit your personal, religious, financial and family needs and wishes.

Call us today to schedule an appointment to discuss your funeral options. Call 417-886-6127.

Benefits of Planning Ahead Today

1. Gives you peace of mind knowing that everything is taken care of. (Planning reduces stress and anxiety over funeral expenses.)
2. Protects the financial security of the survivors. Depending upon the pre-need plan, prices may be frozen.
3. Avoids emotional over-spending by the grieving spouse, children, and/or other family members.
4. Funeral and burial funds are protected if Medicaid coverage is ever needed with a spend-down of assets of the estate.



Gabriel Humiston

- Preneed Counselor
- Insurance Producer
- Third Generation Family Member

Gabriel Humiston is the third generation member of the family who founded and currently owns Walnut Lawn Funeral Home. He is the son of Dr. Ruth Ann and grandson of founders, Bobby and Ruth Wood. Gabe has been raised in the funeral business his entire life.

Gabe is the full-time preneed counselor for Walnut Lawn Funeral Home. He helps those who wish to preplan and prepay for their funeral arrangements to ease the burden to their families and friends.

In his spare time, he enjoys raising and showing horses and has world championships to his credit. Gabe also enjoys the outdoors with fishing, boating, and hunting.



Pre-Planning / Planning Ahead

Why Pre-plan?

Making funeral plans in advance is one of the best final gifts you can leave your loved one. It helps ensure that your final wishes are fulfilled, and allows for funds to be set aside minimizing both the financial and emotional burden for your family.

If needed, pre-planning can also be done for another person by that person's representative as outlined by law through a Power of Attorney over finances and end-of-life decisions, and/or close blood relative.

What Is Pre-planning?

"Is this what they would have wanted?" This is an all too common question when families come to plan a funeral after a loved one has passed away.

Pre-planning is simply the process of outlining plans for a funeral before they are needed. For many people, funeral pre-planning has become an extension of the estate planning process. Making your wishes ahead of time can prove to be a great comfort to loved ones.

It involves gathering a variety of information including: Vital statistics, making decisions about the type of service you want such as where the funeral and burial are to take place, who might participate/minister, and songs. Working together with a pre-planning counselor, you can plan, organize, and document all of your requests. It may also include making a budget to pre-pay for your funeral services.

Where Do I Start?

There are many different ways to begin the planning process. The pre-planning form that is enclosed can help. Think about how you would like to be remembered and the type of service you would like, as well as where you like to be laid to rest when the time comes.

Including your family in the planning process can help them feel connected to you both in life and in death, knowing that your arrangements reflect your wishes. Bringing up the subject when death is not imminent, makes the topic easier to discuss and keeps the focus on the celebration of life rather than an impending loss.

Anyone can create a plan, at any stage in their life, and you always can make changes if you wish.

Contact us to set a time to meet to put your plan together.

You Decide

Pre-planning lets you create your own unique life celebration. Our staff can lead you through the process, providing advice and guidance along the way. They will ensure that you have all the information you need about our products and services, allowing you to make informed decisions.

Relieve Your Family's Burden

Pre-planning and paying for funeral services ahead of time, relieves your family of that burden and gives them more time and energy to focus on healing and remembrance.

Completing authorizations as part of the pre-planning process ahead of time also helps to ease the emotional toll of when a loved one passes.

Pre-payment Options

Those who choose to pay for funeral arrangements in advance generally have a choice in regards to how and when they pay. As required by the State of Missouri, all funeral homes that sell pre-needs must invest this money in either a secured trust or with burial insurance programs. Then, when the person has passed, the pre-need money is then requested and transferred into our funeral home account to pay for services.

At Walnut Lawn Funeral Home, we highly recommend a burial life insurance policy plan as the ideal way to pay for pre-planned arrangements because of the flexibility and protection it offers.

[Burial Insurance, Term Life Insurance, and Whole Life Insurance Options and Differences](#)

Burial Insurance: With burial insurance, you may have a choice of making a single full payment or making regular partial payments over an agreed period of time. In using a burial insurance plan, most people may have partial or full coverage right away even if they choose to pay over several months or years. In other words, if death should occur unexpectedly after only a few payments have been made, the plans you made may be fully paid for by the insurance company (certain exclusions apply).

Burial insurance plans offered at Walnut Lawn Funeral Home offer guaranteed and prices frozen, meaning the services arranged are paid in full regardless of any increase in our prices between the time of arrangement and the time the funeral plan is carried out except for cash advance items such as grave opening/closing costs, obituary costs, taxes, costs of death certificates, and/or honorariums. These policies can also be made irrevocable so that their worth may not be counted as part of someone's estate and assets, important to note if a person needs to qualify for state assistance/Medicaid for care.

Term Life Insurance: Term life insurance policies are commonly provided by companies as a benefit or as a less expensive insurance policy, worth several thousands of dollars, to protect your family. If pre-need arrangements are planned with the intent of using a term life insurance policy, prices cannot be guaranteed or frozen. However, some choose to still utilize a term life insurance policy with this understanding and an assignment on the policy can be made at the time of making at-need arrangements. You may still plan your funeral arrangements that will be kept on file at our funeral home.

Whole Life insurance: Whole life insurance policies are handled the same as term life as far as not freezing or guaranteeing the price of your funeral arrangements planned in advance. However, these policies are regarded as being part of a person's estate. Therefore, if a person needs to qualify for Medicaid to go into long-term care and to qualify for state assistance, and is instructed to "spend down" assets, Walnut Lawn Funeral Home pre-need counselors can make these policies irrevocable

for use for funeral planning. The State of Missouri then may not count this policy as part of the person's estate. We make policies irrevocable through our affiliation with Missouri Funeral Trust.

Funeral Assignments on Insurance Policies: A funeral assignment may be placed on a term or whole life insurance policy. In most cases, the policy must be at least two years old and viable. In order to do an assignment, your funeral director will need: Insurance policy number, name of insurance company with contact information; the beneficiary name with that person's SS #, date of birth and contact information.

At Walnut Lawn Funeral Home, we use an insurance processing company that serves as the Power of Attorney and completes all claim forms for the beneficiary of the policy, as well as pays us directly for the amount of the Goods and Services agreed upon. We will provide the insurance company a certified death certificate so that the insurance company will then finish the claim and pay the remainder of the policy to the beneficiary.

What If I Move?

Our burial insurance plans make it very easy to transfer your pre-need to another funeral home if you move from the Springfield area. Provider paperwork would need to be updated with the burial insurance company. Note, however, that the new funeral home provider may or may not accept the policy and prices as written; there may be slight adjustments.

What If I Die Away from the Area?

In today's world of easy travel and active retirees, sometimes death occurs away from our funeral home area. In such cases, it is important that the family contact Walnut Lawn Funeral Home first to help fulfill the decedent's final wishes. We have a network of funeral homes that we utilize in such cases.

Can Walnut Lawn Funeral Home Arrange a Funeral in Another City or State?

Yes, funerals may be arranged and directed by our funeral home staff outside of Springfield and surrounding areas, as well as out-of-state. We offer this service so families only have to deal with one funeral home to make arrangements and conduct the services, plus the decedent stays in our trusted direct care throughout.

May I Transfer a Pre-need Plan from Another Funeral Home?

Yes, we welcome pre-need plans from other funeral homes. These may be moved to Walnut Lawn Funeral Home as is or with some adjustments. One of our pre-need counselors can assist you in this process.

Carrying Our Funeral Home Card

It is very helpful to carry our funeral home business card in your wallet, as well as give copies to family members, hospice agencies, nursing homes, hospitals and other places as applicable, that states a preneed is on file with Walnut Lawn Funeral Home. This helps to ease the time of locating the funeral home and preneed plan on file at the time of your passing.

With preneed planning, we have your important documents and service arrangements already on file. Plus, one of the first places first responders and coroners search, if there is an unexpected death, is the person's wallet and purse for contact information and if there is a funeral home already chosen.



Funeral Arrangements

Whether you are planning for yourself or for a loved one, the funeral service is one of the most important elements of a person's final arrangements. With the opportunity for great personalization, the funeral service can truly reflect the uniqueness of the life it honors.

Regardless of whether you or your loved one have opted for burial or cremation, the funeral/memorial/celebration of life fills an important role by:

- Honoring, recognizing and celebrating the life of a loved one.
- Allowing family and friends to say their final goodbyes.
- Providing closure after the loss.
- Allowing friends and family to console one another.

In general terms, a funeral is a gathering of family and friends after the death of a loved one, that allows them the opportunity to mourn, support each other and pay tribute to the life of the deceased as they begin to heal.

There's no one, right way to plan a funeral service. We believe that each funeral should be as unique and memorable as the life it honors.

When planning your own funeral service in advance, think about the way you want to be remembered. Perhaps you would like a traditional funeral aligned with certain religious or ethnic customs. Or, a celebration focusing on great memories made with family and friends may be your preference. Maybe it's a combination of both. You can have one service, or several, to honor your life.

Consider the following questions while planning:

- ✓ Where should the funeral or celebration be held?
At funeral home? Church? Cemetery? Other?
- ✓ Who would you like to officiate at the service? Clergy?
A celebrant? Family?
- ✓ Will your service adhere to traditions of a faith or culture?
- ✓ Do you want a eulogy and who should deliver it?
- ✓ Would you like an open or closed casket?
- ✓ Music – 2 to 3 songs to be performed or played during the funeral service?
- ✓ What readings, special poem, and/or other things you would like read during the service and/or printed on the memorial folder?
- ✓ Memorabilia or pictures you would like displayed or part of the Tribute DVD during the visitation and/or service?
- ✓ Picture for the memorial folder, obituaries placed in a newspaper, and on our funeral home website?
- ✓ Refreshments with a reception or full meal to be served for the family, guests?

The pre-planning document at the end of this book will assist in guiding you and documenting answers to these questions.

Final Arrangement Service Plans

When a loved one has passed away, we often hear families tell us at Walnut Lawn Funeral Home that they have never had to do anything like funeral planning before.

Others who are pre-planning sometimes find it difficult to reach out for assistance with planning their final wishes, but afterwards are very relieved and feel a sense of accomplishment that their family is not burdened with planning or paying for their services.

Your Funeral Directors are there from the very first call to guide loved ones through the process of a funeral to remember their loved one.

When considering final arrangements for yourself or a loved one, one of the first decisions you should make is whether you prefer body burial or cremation. This decision influences other important considerations, such as elements of the service and type of cemetery property.

At Walnut Lawn Funeral Home, we are here to help lessen the burden of preneed or at-need planning when a death occurs, and have several funeral and memorial service packages to choose from. These inclusive packages help make the decision-making easier during this stressful time of grief. They also help save money instead of itemizing everything.

The family still has choices that can be made within the packages themselves for personalization, i.e., choice of casket or urn, and additions can always be made.

Funeral Service Options

A formal or informal ceremony, whether it is a funeral or memorial service, provides a sense of closure to family and friends. Elements of the service may be based upon faith or culture, and/or personalization. Options may include or a combination of the following:

- Traditional visitation and funeral service with casket burial in a cemetery.
- Traditional visitation and funeral service with person in a rental casket, and then cremation afterwards.
- Cremation with a Celebration of Life memorial service and/or memorial visitation.
- Veterans service – whether cremation or traditional funeral service.
- Graveside service – for cremation or traditional funeral service.
- Direct burial with no services.
- Direct cremation with no services.
- Green Burial.

Services may be held at the funeral home in our large or small chapel, a church, cemetery, or a special place. Such as a boat house, event center, park, farm or country club.

Gathering (Visitation, Viewing, Wake, Repass)

Typically held the night before or immediately prior to the service, the formal gathering – sometimes called a viewing, visitation, wake, or repass – provides a way for friends and acquaintances to pay their respects and offer condolences to the family. An informal gathering may be a “calling” for those who wish may pay their respects without family present.

Traditional Funeral Service

Traditional funeral services are commonly referred to when the body is placed in a casket and burial is involved. Traditional funeral services can also be done with cremation afterwards. When the body is present for a funeral service with an open casket, by Missouri law, the person must be embalmed for health and sanitation for family and guests to be safe, as-well-as brief preservation reasons. The person is dressed in clothing brought to the funeral home by the family, as-well-as slight cosmetization if needed, and hair professionally done as applicable.

What types of caskets are available?

There are many different types of caskets that may be chosen from the type, to the color. At Walnut Lawn Funeral Home, we have a selection of caskets available in our display room as well as end cuts sample caskets so you may see in person different choices. We also have a state-of-the-art interactive and online casket program to make choices with personalization. Caskets range choices include various colors, as-well-as may be a sealer-type, non-sealer, different gauges of steel, stainless steel, copper, and wood. Caskets may be shopped by going to our website: www.walnutlawnfuneralhome.com.





Cremation

Cremation and Memorial Services

Cremation is an alternative to casket burial. It does not limit the funeral or memorialization options in any way. There are several options for services with cremation as the final disposition, including: A traditional funeral service with the body present with cremation afterwards; a person can be directly cremated without any viewing by the family, or with viewing in a safe environment to say last goodbyes; visitation where the body is embalmed and then cremation follows the visitation; direct cremation with a memorial visitation and/or service with the cremains in an urn that is displayed. Urns may be displayed on a table with one of our special lite bases or in our one-of-a-kind urn bier that can be carried by pallbearers. Your funeral director at Walnut Lawn Funeral Home can assist with all of the options and choices for families.

At Walnut Lawn Funeral Home, we have our own crematory in our facility. You or your loved one stays with us from the first call to take you into our care, during the cremation process, until the person is buried or a designated family member or other person comes to pick up the cremains.

The person is identified throughout the cremation process. Our funeral home has been commended on our highly secure identification process by the inspectors with the State of Missouri.

Pictures of our state-of-the-art crematory area may be viewed on our website or by requesting to schedule a tour when someone is not being cremated. If desired, you are able to view the body going into the crematory itself in our comfortable and protective viewing room.



What is cremation?

Our funeral home crematory, a retort, is a furnace-type that produces intensive heat to at least 1625 degrees Fahrenheit. The body is placed in a rigid leak-proof alternative container, which can be a casket if chosen to do so but not required, to go into the retort. It takes approximately 3-4 hours for the body to be reduced to bone fragments. When the fragments have cooled, they are then processed into finer fragments often referred to as cremains. The cremains are then placed in an urn or temporary container. Urns can be a variety of materials such as wood, bronze, porcelain, metal, or even glass. It is recommended that an urn for ground burial is not breakable such as glass without an urn vault to protect it. The cremated remains typically weigh between three and six pounds.

Prior to cremation, a body is generally not embalmed unless there is a traditional service or visitation where the body is present for viewing.

Cremation can only take place once authorizations are signed by the legally-responsible person and a physician. With preneed planning, you are able to sign your own authorization for cremation, which is very helpful and emotionally beneficial for families. Our director will review the preneed authorization with the legally-responsible person at the time of at-need.





Cemetery-Burial Containers — Monuments

Cemetery or Special Place to be Laid to Rest

To be laid to rest following services is an important part of the healing journey for family members, and allows them a physical place to visit and reflect. This is important for planning for both cremation and casket burials. There are multiple options available. At Walnut Lawn Funeral Home, we do not own a cemetery; this allows us to work with all cemeteries for our families, to help them choose the best options such as geographical area and budgets.

For cremation, choices may include ground burial, placement of cremains in a columbarium such as at Missouri Veterans Cemetery, memorial bench or monument made for cremains, or even scattering of cremains as per regulations and applicable laws for scattering.

If a cemetery plot is considered, know that some cemeteries allow multiple sets of cremains in one plot, or with a loved one who has been buried in a casket. When cremated remains of a loved one are kept with relatives, they can easily become misplaced or discarded through the years, or even stolen from a home or car. A permanent placement provides future generations with a location to visit. It also allows peace for loved ones and allows for healing.

Outer Burial Containers/Vaults

Outer burial containers (concrete liners) or sealed vaults are what the casket or urn goes into for burial. These are required at most cemeteries for caskets, and a few cemeteries require them for urn burials. Concrete liners do not seal and allow the elements inside. A sealed vault does not allow elements inside. Some sealed vaults allow the option for personalization from color to special tops.

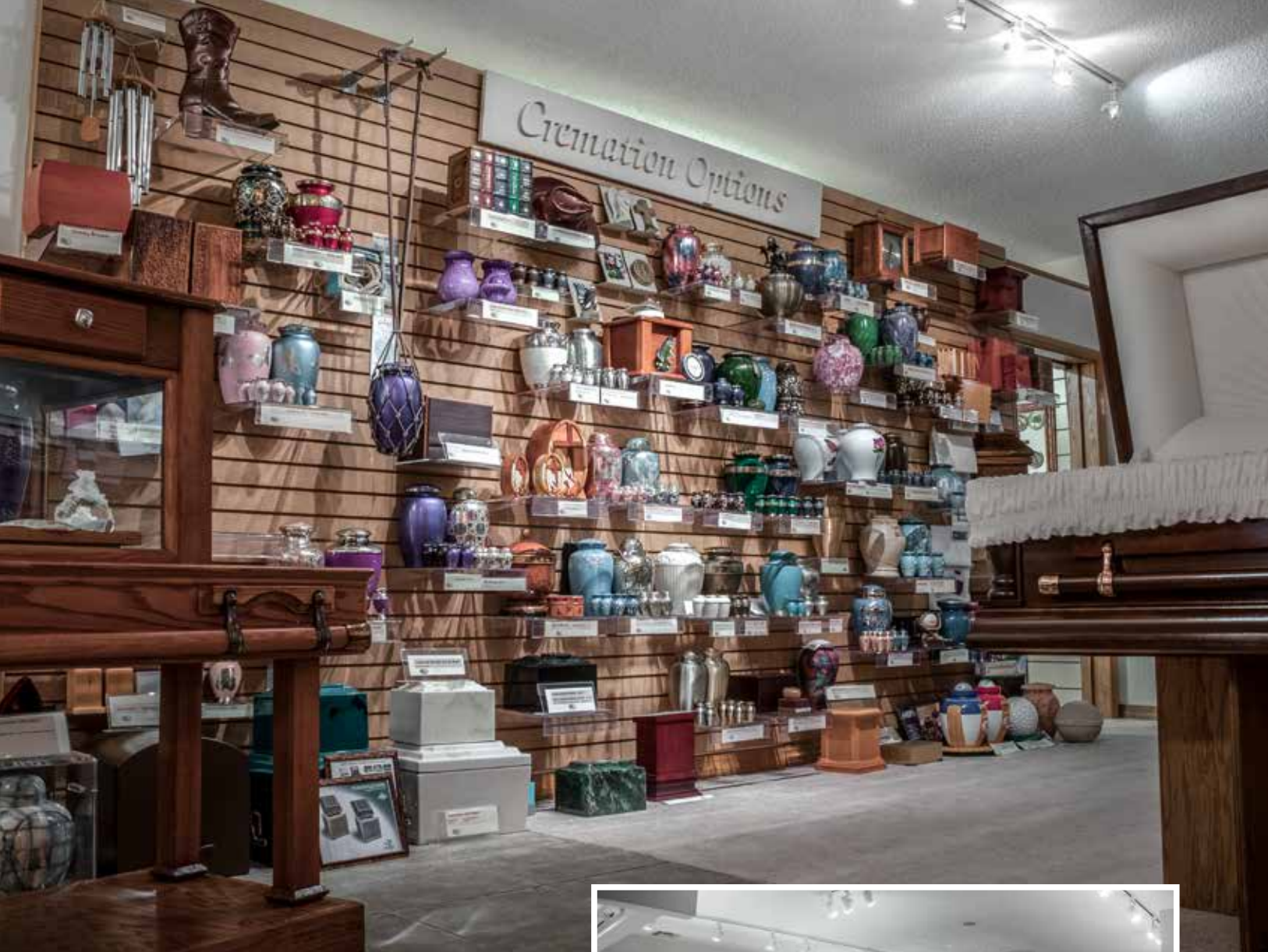
Our display area has various models to help make this decision. Our funeral home helps families make the decision based upon the requirement of the cemetery.

Note: If you are a veteran or a spouse of a veteran or active duty personnel, as a benefit for your service to our country, a concrete box outer burial container is provided at no charge, if burial is in a state or national military cemetery. However, families may choose to purchase a sealed vault for burial in these cemeteries and not use the liner that is provided.

Headstones

There are many options for memorialization of a loved one when laid to rest. The most common is a monument. Each cemetery may have specific requirements, i.e., flat markers, upright monuments.

Options for headstones come in a variety of sizes, shapes, and even colors. Veterans may also be eligible for a veteran marker at no cost. At Walnut Lawn Funeral Home, our full service funeral home can assist you and your family in designing and purchasing just the right stone of remembrance.



Merchandise

- American-made caskets.
- Largest selection of urns in the area.
- Special Keepsakes.
- Legacy Fingerprint Jewelry.
- Specially-designed Memorial Folders and Themed Book Packages.
- Tribute DVDs.
- Monuments.



What to Do When a Death Occurs

When a death occurs there are so many things to consider and decisions to make. These lists can help you navigate through them.

Place of Death:

At Home: If the deceased was under hospice care, notify the hospice nurse. The nurse will contact Walnut Lawn Funeral Home on your behalf. If the deceased was not under hospice or another at-home medical care provider, call 911.

At a Hospital: Notify the hospital you have selected Walnut Lawn Funeral Home. The hospital will contact us on your behalf once they have completed their necessary documents.

At a Nursing/Long Term Care Facility: Notify the staff you have selected Walnut Lawn Funeral Home; they will notify us on your behalf.

Out of State/Out of the Country: If a death occurs away from home, you should notify Walnut Lawn Funeral Home immediately. Directors at our funeral home will help coordinate and facilitate transportation of the person's remains back home for services and/or burial. We have a network of providers who assist us with this process, saving costs as well as the emotional toil and stress of the family taking care of these arrangements themselves.

Contact These People as Soon as Possible

- Call Walnut Lawn Funeral Home about the death of your loved one and set an appointment to make further arrangements. Call: 417-886-6127.
- Relatives, Friends and/or Clergy.
- Personal Representative.
- Cemetery where you want or own property (our funeral home staff may assist).
- Employers (the employer of the deceased and of relatives who will need time off).
- Insurance agencies (life, health and accident) (our funeral home staff may assist).
- Religious, fraternal, civic and veteran's organizations and unions (if applicable).
- Lawyer and Accountant (if applicable).

Secure Vital Statistics of the Deceased

- Full legal name - other names must be identified by "Also Known As" (AKA).
- Date and place of birth (City and State).
- Social Security Number (Social Security Card).
- Home address.
- Father's name / Mother's name, including maiden name.
- Next of Kin and Contact Information.
- Occupation and Industry (if retired, primary occupation when working).
- Level of education achieved.
- Current doctor and contact information.

*Providing Tender Care
During Tender Moments*

Documents to Collect

These may be required to establish rights for insurance, pensions, survivor benefits, ownership, etc.

- Will
- Power-of-Attorney Document with Final Disposition and Financial Designation
- Military discharge paper(s) (DD214)
- Legal proof of age or birth certificate
- Marriage license
- Citizenship papers (if not a US Citizen)
- Insurance policies
- Social Security Card

Discuss With Funeral Home

- Date and time for service. Please DO NOT set times for service ahead of meeting with funeral director.
- Whether your loved one is to be buried or cremated.
- Service details (e.g. would you like a visitation period, a formal service, a reception?).
- Clothing the deceased will be buried or cremated in.
- If a member of the clergy will be engaged for the service.
- Pallbearers, music, pictures, flowers, scripture or readings.
- If you would like a charity to receive donations in memory of your loved one.
- The funeral director will ask if you have made any arrangements with a cemetery. If you have not done this, you may need to visit the cemetery.

If Casket Burial

- Would you like other members of the family to be with your loved one in the future? This determines the size and type of cemetery property needed.
- What type of memorial would you prefer (a marker set flush with the ground, or an upright monument)?
- If an in-ground liner or vault is required.

If Cremation

- Would you like to schedule a viewing or visitation prior to the cremation?
- Would you like to use our chapel for a funeral service prior to the cremation?
- Would you like your family to be present at the time of cremation? (This is called a Witness Cremation).
- What type of urn would you prefer (metal, wood, marble, ceramic, biodegradable, etc.)?
- What type of engraving would you like on the urn?
- What type of final resting place would you prefer for your loved one (ground burial, above ground niches, or scattering or placement of cremated remains in a cremation garden)?

- Would you like other members of your family to be with your loved one in the future? This determines the size and type of the final resting place.

Burial of an Urn

- A burial urn or urn vault may be required for ground burial in some cemeteries.
- What type of memorial do you prefer (e.g. a bronze or granite marker set flush with the ground, an upright monument, or a cremation bench)?

Above Ground Niches

- Would you like the niche to be inside a building or out?
- Would you like the niche to be glass-fronted so that you can display personal mementos?

TIP: Determine the measurements of the niche to ensure the urn will fit properly.

Scattering

- Would you like to be present for the scattering?
- Would you like a permanent memorial to be placed in or around the area where scattering took place?

You May Need to Pay

- Funeral arrangements, clergy, florist, newspapers, transportation, casket and/or urn and other selected services and merchandise.
- Cemetery charges (e.g. lot, opening/closing of the lot, vault or liner, selected headstone or other memorial).
- Current and urgent bills (i.e. mortgage, rent, taxes, telephone, etc.).

Tips for Writing an Obituary

You may choose to have an obituary printed in the newspaper and/or on the funeral home's website.

When you make arrangements at the funeral home, your funeral director will be glad to assist you in composing the obituary and will make arrangements with the newspaper for you. The following information is customarily included in an obituary:

- Full name of the deceased (including any nicknames).
- City or town of residence.
- Birth and passing dates.
- List of immediate family members of the deceased, specifying if they are alive or deceased.
- Any memorable way of honoring the deceased, as by mentioning personal achievements, hobbies and interests, military service, etc.
- A favorite or special charitable organization for people to donate to in memory of the deceased.
- Locations and times for the visitation, funeral or memorial service and graveside service.

Unique and Special Services for All Families

Helpful Information

First Steps

It is common to experience anxious and overwhelming emotions when a loved one passes away. Our staff at Walnut Lawn Funeral Home will provide compassionate care and guidance to help you through this difficult time.

When a death has occurred, Walnut Lawn Funeral Home will be notified about the death from the designated agency such as hospice, nursing home, or the hospital, and to make arrangements take the decedent into our care. It is important that the decedent's family also contact the funeral home to notify us about the passing of your loved one.

Appointments: Appointments are very highly recommended for making arrangements so that one of our funeral directors is available to meet with you at a good time for both parties. Our professional staff is trained to handle all the details of the service and filing the appropriate documents with applicable agencies.

Initial Arrangement Conference and What to Bring

The initial arrangement conference is held to get to know you and your family, gather vital statistic information about the decedent specifically for the death certificate, and plan funeral services. This meeting time averages between 30 minutes and 2 hours or more depending upon the type of service, as well if a preplan has already been prepared. Your funeral director will outline other information needed, as applicable, at this initial meeting.

It is good to bring to this meeting (of the decedent as applicable):

- Birth Certificate
- Social Security Card
- DD214
- Preneed Contract
- Insurance Policy
- Cemetery Documents
- Obituary
- Marriage License
- Driver's License
- Contact details for Clergy and Musicians
- Picture (for memorial folder, website, paid obituary)
- Newspaper Contact Information for Paid Obituary
- Clothes (long sleeves, high neck like a collared shirt and underwear)

Day Of Service

Time of Events: We will be set up at the church or funeral home at least 30 minutes before the start of visitation or funeral service. Family viewing times will be set directly with the funeral director. The funeral director will coordinate and schedule times with all cemeteries, especially any veteran cemeteries.

Parking Day of Service: When parking at a church, please park behind the hearse. At the funeral home, back in next to the hearse on the south side, facing the entry drive. This will allow for the processional to the cemetery.

Funeral Processional: During the funeral processional to the cemetery, please follow all traffic laws. Turn on your hazard lights. Be cautious of those who break into the processional.

Payment Policies

Walnut Lawn Funeral Home has established a uniform payment policy, to serve all families fairly and to prevent misunderstandings. This payment policy enables us to contain our costs for all families we serve. **Full payment is expected when arrangements are made for at-need services.** Services will not be officially scheduled, merchandise ordered, and/or cremation to take place until payment is received in full or a valid insurance assignment is made. We accept many different types of payment and offer financial assistance that include: VISA, MASTERCARD, DISCOVER, AMERICAN EXPRESS, debit cards, cashiers checks (no personal checks), cash, money orders, wiring of funds directly to our bank, or insurance assignments. We offer crowdfunding and/or payment plans if qualify through our non-collateral loan program. There are processing charges for credit and debit card processing, as well as insurance assignments, loans, and crowdfunding.

Death Certificates

Our funeral home recognizes and understands the need for certified death certificates to conduct the business of the decedent. The filing and certification process and obtaining certified copies of death certificates is a comprehensive process that requires several individuals and agencies to complete. It may take several days, and in the case of autopsies and/or toxicology labs, to several weeks or even months. Other applicable factors affecting the timing of this process include the medical professional not using the state electronic system and/or is on vacation, health department issues, technology, out-of-state death, etc. The staff at Walnut Lawn Funeral Home will contact the family when certified copies of the death certificate are ready to be picked up from our funeral home. Additional certified copies may be obtained directly by going to any health department in the State of Missouri and requesting certified copies.



Eulogies

Giving a meaningful, moving eulogy can be a nerve-racking situation for even the most accomplished public speaker, but it need not be. How can you summarize somebody's life in a few short minutes, while being both somber and funny at the same time? Writing and delivering a eulogy is a therapeutic tool to help deal with your grief and being chosen to give a eulogy is an honor and should be treated that way. Here are some tips for writing and delivering an eloquent and memorable eulogy.

Gather Information

Talk with family members, close friends and co-workers to get important information on the deceased. Some important information to include in the eulogy is the person's family and other close relationships, their education/career, hobbies or special interests, places the person lived or traveled to, and any special accomplishments they had.

Organize Your Thoughts

Jot down your ideas by whatever means are the most comfortable and familiar to you. Create an outline of your speech and fill in the information that you gathered about the person.

Write It Down

This is not a toast at a wedding where you can make off-the-cuff remarks, and you should not ad-lib. Writing it all down allows you to include and remember every detail you wanted in your eulogy. When you bring a copy of your eulogy to the podium, make sure it is easy to read, print it out in a large font, or if it is handwritten, leave a few spaces between the lines. Keep in mind your time constraints; it's best to keep things on the short side, especially if there are other speakers.

Review and Revise

Your first draft will not be the last. When you think you are done, sleep on it and look it over in the morning when it is fresh again, that will be the time to make any necessary revisions.

Practice, Practice, Practice

Read over your eulogy several times in order to become familiar with it. Practice in front of a mirror, read it over to some friends or family and have them give you feedback. Become familiar with your speech so you can recite it without making it look like you're reading from a script. The more you practice, the more comfortable you will be.

Make Them Laugh, But Be Respectful

A funeral is not a roast, however, there is room for humor in your eulogy. Fondly remember a story about the person that everyone can relate to. Keep it appropriate; there may be children and the elderly there that may not share the same sense of humor. Laughter is truly the best medicine. Some well-placed humor will help people cope, and will bring back some fond memories of the deceased.

Don't Be Afraid To Show Emotion

Funerals are an extremely emotional event; nobody expects you not to shed a few tears. However, if you feel that you will be too strongly overcome by your emotions, have a back-up plan in place where someone you trust can deliver the eulogy for you. Give them a copy well in advance if you feel this could be an issue. Have a glass of water as well as tissues handy.

Video Tribute



Video Tributes are one of the most meaningful ways to honor a life well lived. These are generally played during the visitation time. After the service or the family viewing the video, we may upload the Tribute Video to your loved one's obituary Tribute Wall on our website.

At Walnut Lawn Funeral Home, we use a special software to produce beautiful Tribute DVDs with special themes and music. We will simply email the family a link to the portal to upload 50 photos that memorializes your loved one, or photos may be brought into the funeral home for scanning and then returned to the family.

A copy of the Tribute DVD is included in most of our service packages. Copies of DVDs and special applicable mementos of the pictures from the DVD may be purchased by going to your loved one's obituary Tribute Wall and clicking on the video link.

Preferred Celebration of Life Catering Services

Special memories of our loved ones are often connected with spending time with them over a wonderful meal. Funeral traditions in America often include comfort food to be prepared and served when a loved one passes away.

Our Preferred Celebration of Life Catering Services offer a convenient and affordable way for families and friends to focus on time together, rather than meal planning and preparation, providing nourishment for grieving family members and friends.

The funeral directors at Walnut Lawn Funeral Home, will help coordinate the catering service to provide full meal packages and/or receptions that include the food, beverage service, and serving items so families do not have to be concerned about the details. We have a specially-designed full meal and reception package menu to help make choices easier. Any part of the menu may be customized especially to remember a loved one's favorite special food recipes like Mom's fried chicken or chocolate chip cookies, Grandpa's favorite drink of Dr. Pepper, or something they are remembered for doing like eating vanilla ice-cream every night.

The meal or reception may be served in our funeral home reception area, a residence in Springfield or surrounding area, or other special gathering place. Typically, the reception items are served during visitation, but early enough for families to enjoy nourishment prior to the gathering. Meals are generally served after a funeral service as part of the informal time of family fellowship.

Make the Walnut Lawn Funeral Home Preferred Celebration of Life Catering Service, a part of your memorial or traditional package, or for any special event or occasion.





Veterans Benefits

Military personnel or honorably discharged veterans are entitled to benefits when it comes to final arrangements.

At Walnut Lawn Funeral Home, we are honored to offer several funeral and cremation packages just for active duty personnel or veterans in gratitude for serving our country.

Most all veterans and active duty personnel may receive the following:

- Burial Flag
- Grave Marker
- Military Honors
- Burial Plot or Niche in the Columbarium Wall at a Military Cemetery
- Outer Burial Container (non-sealer concrete box) to enclose the casket
- Opening/Closing of the Plot or Niche at a Military Cemetery at No Cost
- Final salute, flag line, and/or escort to the cemetery by the Patriot Guard Riders
- If an urn is chosen, the urn may be placed in our one-of-a-kind urn bier and have the casket draped with the flag and then the bier can be carried by pallbearers.

Other benefits that MAY be available, depending upon certain requirements, include:

- Death pension to the widow and/or minor children
- Reimbursement of part of the funeral expenses to the person who paid the bill.

Spouses of Veterans are also entitled to benefits in a military cemetery including:

- The plot or niche to be with their loved one, marker, opening/closing costs, and outer burial container (non-sealer concrete box) for the casket.

Documents required for claiming benefits may include:

- Itemized funeral bill receipt
- Veteran's discharge document (Form DD-214) *Our funeral home may assist the family in getting this document.
- Certified copy of death certificate
- Marriage certificate
- Birth certificates of minor children

Note: As part of the pre-need planning process, veterans and their families may become pre-certified to be placed at a military cemetery. The veteran's DD214 and/or marriage certificate are required to complete this process. Walnut Lawn Funeral Home provides assistance with this process.



Funeral Etiquette

Like everything in society, funeral etiquette and what is expected of you has evolved over time. As always, common sense and good discretion is the best guide to proper funeral etiquette. Here are a few guidelines.

DO:

Express your condolences: It's not easy to come up with the words to offer sympathy to someone who has just lost a loved one. You don't need to be a poet, simply saying something like, "I am sorry for your loss; my thoughts and prayers are with you and your family," is enough. If you can't be at a funeral service in person, sending a card or leaving a message on a memorial website is a perfect way to express your sympathy.

Sign the register book: The family will keep the register book as a memento for years. Be sure to include your full name and relationship to the deceased.

Give a gift: You don't need to go overboard with your gift, after all it is the thought that counts. Suitable gifts include: flowers, a donation to the charity of the family's choice, or you can make a commitment of service to the family at a later date. A commitment of service can be something as simple as cooking them a dinner, or offering to clean up their house, any of the "little" things that may be neglected while a family deals with death. Make sure you provide a signed card, so the family knows who gave the gift.

Keep in touch: You may feel that the family needs their space and time to grieve, but a simple phone call or note after the funeral lets the family know you care. With social networking, leaving a quick note is as simple as a click of a mouse. Invite them for coffee or lunch, or to go to a movie or special event like a fall festival, or even church. The months following a death are when grieving friends and family need the most support.

DON'T:

Talk on your phone during a visitation or service: Your phone ringing will be highly inappropriate and will cause a disturbance, so turn any ringers or notifications off. Even better, leave your phone at home or in your car. A funeral is not the time to be texting or checking your messages.

Allow your children to be a distraction: From a very young age, children are aware of death, and if the funeral is for someone that was close to them (grandparent, aunt, uncle), they should be given the option to attend. However, if it is not appropriate for your child to be there, and if you feel they will cause a commotion, leave them with a babysitter.

Be afraid to remember the good times: Funerals are obviously a time of grieving and mourning, but remembering the good times helps with the healing process. Sharing a funny and appropriate story is acceptable, and in some cases exactly what the deceased would have wanted.

Overindulge: If food or drink is being served, do not over do it. Have a bite to eat before you go to the service. You do not want to be 'that guy' parked at the snack table. If alcohol is served, limit yourself to one or two, do not become inebriated and risk doing something inappropriate.

Photographs: Don't take pictures of the grieving family without their approval.



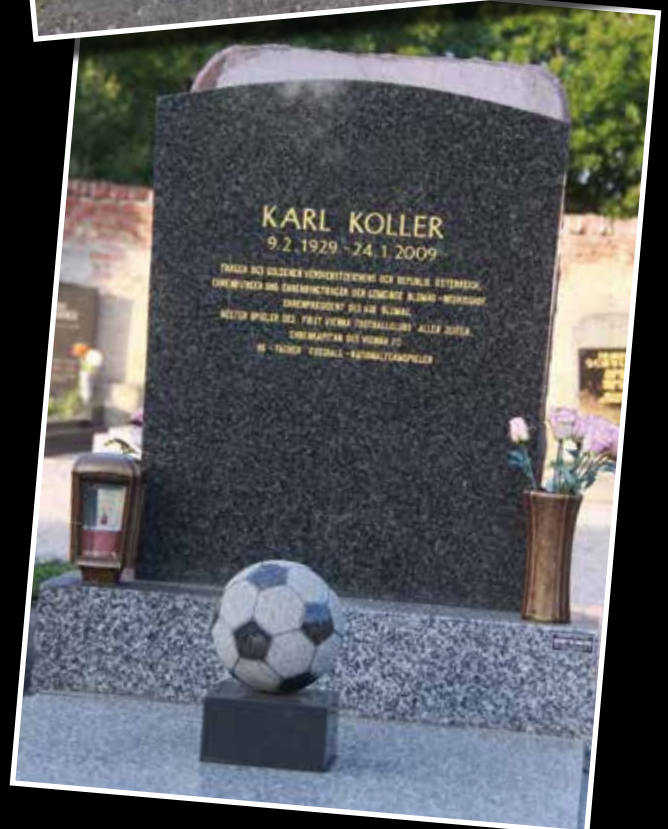
Preserving Memories of a Lifetime

At Walnut Lawn Funeral Home, Ltd., we realize selecting the right memorial can be a difficult decision and can be a stressful experience. We will never pressure you into making a quick choice.

When you are ready, we will help you choose an appropriate memorial with the assurance of quality artisanship, the finest design, and the best possible value. Each memorial is carefully handcrafted to reflect the uniqueness of the individual or family it commemorates for future generations.

Whether you call it a monument, cemetery marker or headstone, there are numerous options to celebrate the life of your loved one.

You already trust Walnut Lawn Funeral Home Ltd., for funeral, cremation and celebration services. We look forward to assisting with your monument purchase.



After the Funeral

After the funeral, there are many important personal, financial, and legal tasks to handle. Suggested list includes:

- ☐ Filing life insurance claims for each policy held.
- ☐ Contacting Social Security to notify them of the death and to discuss survivor benefits and the death (#1-800-772-1213).
- ☐ Contacting the Veterans' Administration, if applicable. Ask them about benefits, appropriate forms and procedures (#1-800-827-1000).
- ☐ Meeting with an attorney with experience in settling estates.
- ☐ Consultation with an accountant.
- ☐ Contacting bank(s) to revise or close out checking/savings accounts, safe deposit boxes, CDs, and other accounts in which the name of the deceased is involved.
- ☐ Canceling direct deposit payments that are in the name of the deceased.
- ☐ Contacting creditors for all mortgages, personal notes, credit card companies, etc., in which the name of the deceased is involved.
- ☐ Changing ownership of joint or solely owned stocks and bonds.
- ☐ Transferring or closing IRA and retirement accounts or other investments managed by broker.
- ☐ Notifying doctors, dentists, and pharmacies of the death.
- ☐ Changing names on utility accounts, cable, cell phone, electric, gas, internet, sewer, telephone, trash.
- ☐ Changing beneficiaries on insurance policies, retirement accounts, savings bonds, annuities, etc.
- ☐ Notifying home, business, and automobile insurance companies.
- ☐ Filling out appropriate health insurance claims and notifying companies of the death.
- ☐ Managing remaining digital footprint and passwords – Facebook, Instagram, Amazon, Paypal, etc.
- ☐ Transferring of vehicle titles and estate deeds.
- ☐ Taking care of the person's estate (home, personal items and property). May contact an organization that handles these types of estates. Donate or sell personal items and clothing.
- ☐ Disposing of over-the-counter and prescription medications.
- ☐ Meeting with a realtor to sell real estate.

- ☐ Transferring assets into your name or trust, as applicable.
- ☐ Ordering a monument through the funeral home
- ☐ Ordering memorial merchandise: Jewelry, memorial blankets, and keepsakes.

For you personally:

- ☐ Write "Thank You" notes.
- ☐ Visit cemetery and take flowers.
- ☐ Post positive testimonials on review sites.
- ☐ Write in a daily journal.
- ☐ Seek out a support group to help through the grieving process and/or volunteer in the community.
- ☐ Set a time with funeral home to plan and/or pre-pay for your own funeral, burial, or cremation.

NOTE: This is only a suggested checklist. It is not intended to replace appropriate legal or financial counsel.



Walnut Lawn
FUNERAL HOME
DeGraffenreid-Wood-Crematory



Social Security

When a loved one dies, there are certain things you need to know about Social Security. It is best that you contact the Social Security Office directly to discuss such things as: Survivor benefits, when will my loved ones' Social Security check deposits stop, apply for burial benefits, etc.

Some items may change accordingly by the federal government. The number to call Social Security is: #1-800-772-1213.

How Much are the Benefits?

Social Security pays out a special one-time payment of \$255 to a surviving spouse or eligible child of a qualifying recipient. Additional monies due will depend on the earnings of the deceased. The more he or she paid in Social Security, the higher the monthly benefits.

Who is Eligible to Receive the Monthly Benefits?

Social Security survivor benefits may be paid to your:

Widow or widower – Certain benefits per eligible age and/or if he or she is taking care of your child under the age of 16 or disabled.

Unmarried Children - until the age of 18 years. Your child may receive benefits if they were disabled before the age of 22 and have not recovered from their disability.

Dependent parents – at the age of 62 and older.

Divorced spouses – a divorced spouse may be eligible to receive certain benefits with qualifications such as age, raising minor children under the age of 16 years, and/or length of marriage.

To receive survivor benefits, you may need to provide the following information at the time of your claim:

- Proof of death – Walnut Lawn Funeral Home faxes a death notice to Social Security, and then SS is notified again when the death certificate is filed, however, taking a certified copy of the death certificate to your meeting is helpful.
- Your Social Security numbers – as-well-as the deceased's number.
- Your birth certificate.
- Your marriage certificate – if you are a widow or widower.
- Your divorce papers – if you are applying as a surviving divorced spouse.
- Dependent children's Social Security numbers.
- Deceased worker's W-2 forms or tax documents.
- Your bank name and account information – the benefits may be able to be directly deposited into your account.

It is important to remember that benefits and qualifications change. With this in mind, we urge you to contact your local Social Security office and read additional information at www.ssa.gov.

What Is Grief?

"Grief is reaching out for someone who's always been there, only to find when you need them the most, one last time, they're gone".

The death of a loved one is life's most painful event. People's reactions to death remains one of society's least understood and most off-limits topics for discussion. Often griever's are left totally alone in dealing with their pain, loneliness and isolation.

Grief is a natural emotion that follows death. It hurts. Sadness, denial, guilt, physical discomfort and sleeplessness are some of the symptoms of grief. It is like an open wound that must heal. At times it seems as if this healing will never happen. While some of life's spontaneity begins to return, it never seems to get back to the way it was. It is still incomplete. We know, however, that these feelings of being incomplete can disappear.

Healing is a process of allowing ourselves to feel, experience and accept the pain. In other words, we give ourselves permission to heal. Allowing ourselves to accept these feelings is the beginning of that process. The healing process can take much less time than we have been led to believe. There are two missing parts. One is a safe, loving, professionally guided atmosphere in which to express our feelings; the other is knowing how and what to communicate.

The Grieving Process

When we experience a major loss, grief is the normal and natural way our mind and body react. Everyone grieves differently, but at the same time there are common patterns people tend to share.

For example, someone experiencing grief usually moves through a series of emotional stages, such as shock, numbness, guilt, anger and denial. Physical responses are typical also, they can include: sleeplessness, inability to eat or concentrate, lack of energy and lack of interest in activities previously enjoyed.

Time always plays an important role in the grieving process. As the days, weeks and months go by, the person who is experiencing loss moves through emotional and physical reactions that lead toward acceptance, healing and getting on with life as fully as possible.

Sometimes a person can become overwhelmed or bogged down in the grieving process. Serious losses are never easy to deal with, but someone who is having trouble beginning to actively re-engage in life after a few months, should consider getting professional help.

For example, if continual depression or physical symptoms such as loss of appetite, inability to sleep, or chronic lack of energy persists, it is probably time to see a doctor.

Allow Yourself to Mourn

Someone you love has passed away. You are now faced with the difficult, but important, need to mourn. Mourning is the open expression of your thoughts and feelings regarding the death and the person who has died. It is an essential part of healing.

You are beginning a journey that is often frightening, painful, overwhelming and sometimes lonely. This section provides practical suggestions to help you move toward healing in your personal grief experience.

Realize Your Grief Is Unique

Your grief is unique. No one will grieve in exactly the same way. Your experience will be influenced by a variety of factors: the relationship you had with the person who died, the circumstances surrounding the death, your emotional support system and your cultural and religious background.

As a result of these factors, you will grieve in your own special way. Don't try to compare your experience with that of other people or to adopt assumptions about just how long your grief should last. Consider taking a "one-day-at-a-time" approach that allows you to grieve at your own pace.

Talk About Your Grief

Express your grief openly. By sharing your grief outside yourself, healing occurs. Ignoring your grief won't make it go away; talking often makes you feel better. Allow yourself to speak from your heart, not just your head.

Doing so doesn't mean you are losing control or going "crazy". It is a normal part of your grief journey. Find caring friends and relatives who will listen without judging. Seek out those persons who will walk "with" not "in front of" or "behind" you in your journey through grief.

Avoid people who are critical or try to steal your grief from you. They may tell you, "keep your chin up" or "carry on" or "be happy." While these comments may be well intended, you do not have to accept them. You have a right to express your grief; no one has the right to take it away.

Expect to Feel a Multitude of Emotions

Experiencing a loss affects your head, heart and spirit. So you may experience a variety of emotions as part of your grief.

Confusion, disorganization, fear, guilt, relief, or explosive emotions are just a few of the emotions you may feel. Sometimes these emotions will follow each other within a short period of time, or they may occur simultaneously.

As strange as some of these emotions may seem, they are normal and healthy. Allow yourself to learn from these feelings. Don't be surprised if out of nowhere you suddenly experience



surges of grief, even at the most unexpected times.

These grief attacks can be frightening and leave you feeling overwhelmed. They are, however, a natural response to the death of someone loved. Find someone who understands your feelings and will allow you to talk about them.

Allow for Numbness

Feeling dazed or numb when someone loved dies is often part of your early grief experience. This numbness serves a valuable purpose: it gives your emotions time to catch up with what your mind has told you. This feeling helps create insulation from the reality of the death until you are more able to tolerate what you don't want to believe.

Be Tolerant of Your Physical and Emotional Limits

Your feelings of loss and sadness will probably leave you fatigued. Your ability to think clearly and make decisions may be impaired and your low energy levels may naturally slow you down. Respect what your body is telling you. Nurture yourself. Get daily rest. Eat balanced meals. Lighten your schedule as much as you can. Caring for yourself doesn't mean feeling sorry for yourself; it means using your survival skills.

Develop a Support System

Reaching out to others and accepting support is often difficult, particularly when you hurt so much. But the most compassionate self-action you can do during this difficult time is to find a support system of caring friends and relatives who

will provide the understanding you need. Find those people who encourage you to be yourself and acknowledge your feelings - both happy and sad.

Make Use of Ritual

The funeral ritual does more than acknowledge the death of someone loved. It helps provide the support of caring people.

Most importantly, the funeral is a way to express your grief outside yourself. If you eliminate this ritual, you often set yourself up to repress your feelings, cheat everyone who cares a chance to pay tribute to someone who was and always will be, loved.

Embrace Your Spirituality

If faith is part of your life, express it in ways that seem appropriate to you. Allow yourself to be around people who understand and support your religious beliefs.

If you are angry with God because of the death of someone you loved, recognize this feeling as a normal part of your grieving process. Find someone to talk with who won't be critical of whatever thoughts and feelings you need to explore.

You may hear someone say, "With faith, you don't need to grieve." Don't believe it. Having your personal faith does not insulate you from needing to talk out and explore your thoughts and feelings. To deny your grief is to invite problems that build up inside you. Express your faith, but express your grief as well.

Allow a Search for Meaning

You may find yourself asking, "Why did he die?" "Why this way?" "Why now?" This search for meaning is another normal part of the healing process. Some questions have answers, some do not. Actually, the healing occurs in the opportunity to pose the questions, not necessarily in answering them. Find a supportive friend who will listen responsively as you search for meaning.

Treasure Your Memories

Memories are one of the best legacies that exist after someone dies. Treasure them. Share them with your family and friends. Recognize that your memories may make you laugh or cry. In either case, they are a lasting part of the relationship that you had with a very special person in your life.

Move Toward Your Grief and Heal

The capacity to love requires the necessity to grieve when someone you love dies. You can't heal unless you openly express your grief. Denying your grief will only make it become more confusing and overwhelming. Reconciling your grief will not happen quickly. Remember that grief is a process, not an event.

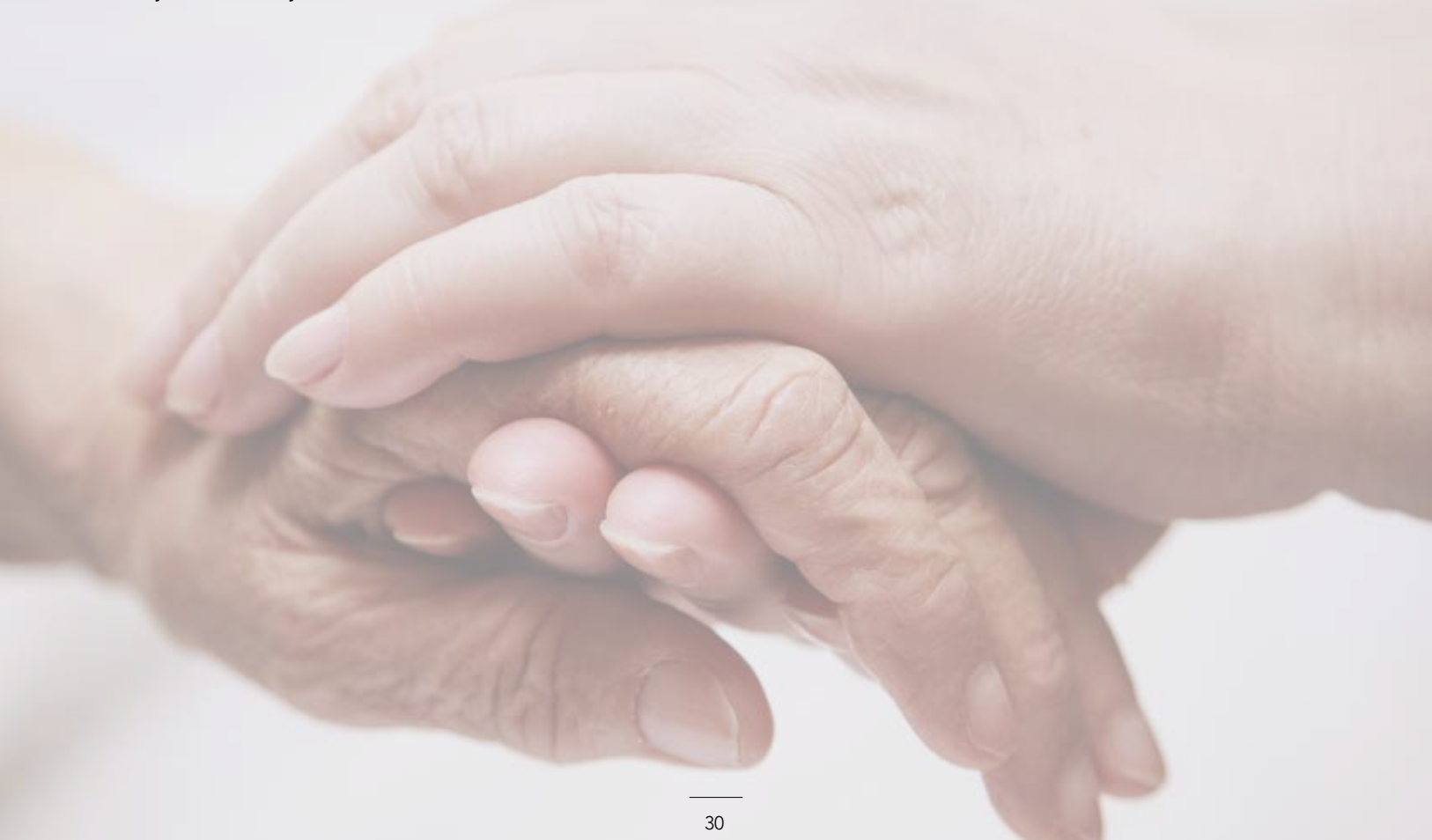
Be patient and tolerant with yourself. Never forget that the death of a loved one changes your life forever. It's not that you won't be happy again, it's simply that you will never be exactly the same as you were before the death.

Accepting a Loss

For each of us - rich or poor, young or old - there are times in our lives when we must face and deal with personal losses along with the pain and sorrow they cause. Examples that come easily to mind are the death of a parent, spouse, child, or other close family member or friend. Many other events and transitions also bring with them sadness and a need to grieve:

- Being told you have a serious, possibly terminal illness.
- Having to give up interests and activities that have been a major part of your life.
- Seeing serious decline in the mental or physical health of someone you love.
- Retiring from a career or voluntary activity that has helped shape who you are and what you stand for.
- Losing a significant part of your independence and mobility; even giving up driving can be a significant loss for many people.
- Moving out of your home.
- Saying goodbye to a favorite pet.

Losses such as these are simply part of life. Like their counterparts among the joyful occasions in our lifetime - the birth of a child or grandchild, a celebration of marriage, an enduring friendship - they are part of what it means to share in the human experience. The emotions they create in us are part of living, as well.



Helping a Friend or Neighbor Cope With Loss

Before the Funeral

1. Offer to notify his/her family and friends about funeral arrangements.
2. House-sit to prevent burglaries during the funeral and visitations.
3. Help answer phones and greet visitors.
4. Keep a record of everyone who calls, visits or has been contacted.
5. Help coordinate the meals and drinks.
6. Offer to pick up friends and family at the airport and to arrange accommodations.
7. Offer to provide transportation for out-of-town visitors.
8. Help keep the house clean and the dishes washed.

After the Funeral

1. Prepare or provide dinner on a day that is mutually acceptable.
2. Do Step 1. every week for two to three months.
3. Offer to help with the garden such as watering, mowing or pruning.
4. Feed and exercise the pets, if any.
5. Write notes offering encouragement and support.
6. Offer to drive or accompany him/her to the cemetery regularly.
7. Offer to house-sit so he/she can get away or visit family out of town.
8. Make a weekly run to the supermarket, laundry, or cleaners.
9. Help with the Thank You notes and/or other correspondence.
10. Anticipate difficult periods such as anniversaries, birthdays, holidays and the day of death.
11. Always mention the deceased by name and encourage reminiscing.

Above all, just listening and your concern and presence will help.

Bereavement & Support Services

General Information on Grief

www.walnutlawnfuneralhome.com

Walnut Lawn Funeral Home provides several sources for grief support. These resources may be found on our website or by asking one of our funeral directors.

www.HorizonHospice.com

Information on grief provided by a local hospice provider.

www.centerforloss.com/grief

A thorough and comprehensive look at grief and grieving offered by Dr. Alan Wolfelt.

www.comfort-for-bereavement.com

Helpful comforting information on bereavement.

www.psycom.net/depression.central.grief.html

A series of links pertaining to grief and bereavement.

www.grief.net

Excellent grief handbook and other resources.

www.willowgreen.com

Provides resources in the areas of illness, dying, grief and loss.

www.lostandfoundozarks.com

A local support group program serving Southwest Missouri, located in Springfield, MO

Local Church Support Groups

There are local church grief support groups in the area hosted by churches.

Death of a Child

Grief Support - www.compassionatefriends.org

Grief support after the death of a child.

Parents Grieving Loss - www.erichad.com

Support and care for parents grieving the loss of a child.

Children and Loss

Dougy Center - www.dougy.org

This site is run by The Dougy Center for Grieving Children.

Fernside - www.fernside.org

A club for kids and teens dealing with death.

Raindrop - www.iul.com/raindrop

This explains death to children in cartoon form.

Loss of a Loved One

Loss of an Adult Sibling - www.adultsiblinggrief.com

This site is dedicated to the formation of a support community for those who have suffered the devastating loss of an adult sibling.

Suicide Signs - www.sfsuicide.org

What to look for when assessing potential risk.

Suicide: FAQ - www.faqs.org/faqs/suicide/info

This is an excellent place for information.

Teen Suicide Page - www.cln.org/themes/suicide.html





Live Well Silver and Gold Club of Southwest Missouri *Outreach Program of Walnut Lawn Funeral Home*

Ruth Ann Wood-Humiston, PhD, second generation funeral director and owner of Walnut Lawn Funeral Home, founded the Live Well Silver and Gold Club of Southwest Missouri, an outreach program to address the unique needs of mature adults.

There are different seasons and chapters in life, many resulting from an empty nest, loss of a loved one, being new to the community, or simply not knowing what to do with themselves as they face retirement. Live Well is specifically designed to help members stay active and make healthy connections as they move from one chapter to the next.

OUR MISSION: To provide a supportive platform for our members that will strengthen and stimulate their emotional, intellectual and physical health while providing a variety of activities and events that promote meaningful interaction and friendships, enhancing happiness and life satisfaction as part of a life well lived.



THE LIVE WELL SILVER AND GOLD CLUB brings together the talents and resources of those 55 and older in Southwest Missouri, fostering an environment of companionship, growth, fun, and social interaction, enriching the lives of all who participate. Club members meet regularly at different venues determined by the activity. We welcome members to suggest ideas for fun and informative activities and events and assist in developing, planning, and coordinating them.

HOW TO REGISTER: You may register for membership by calling us at: #417-886-6127; emailing your interest: info@walnutlawnfuneralhome.com; coming in to visit us at Walnut Lawn Funeral Home; or by going onto our website and go to the resource tab then Live Well page: walnutlawnfuneralhome.com; or completing the membership form on our Live Well brochure.

Registration is crucial for communication purposes, to invite members to exciting and educational Live Well events, and to plan accordingly. It also allows you to share ideas with us regarding activities in which you would like to participate. Many activities are free and sponsored by community businesses, while others may require a nominal fee.

WE POST LIVE WELL ACTIVITIES on our Live Well Facebook page and website, and reach out to members via email or phone.





Legal Issues

Wills, probate, joint property, estate taxes, selecting estate trustees/attorneys for property, personal care and other issues may appear somewhat intimidating at first.

Fortunately, with a little guidance and preparation, dealing with such matters does not have to be so overwhelming. Planning ahead and revising your plan often will help avoid unnecessary grief and confusion in the end. 'Estate Planning' includes all of the following issues and documents.

Administration of a Will

A Will is an instrument by which a person (the "testator") makes a disposition of his/her property, to be performed or take effect after his or her death.

A well-drafted Will may provide for the welfare of the testator's family, distribute the testator's assets in accordance with his/her wishes and secure the efficient management of the testator's property.

Handwritten Wills ("holographic Wills") can be made by a testator without the services of a lawyer, but problems can arise if not done properly and/or in accordance with applicable legislation.

A properly drafted Will can be a simple, inexpensive way to address many estate-related matters and can make matters run much smoother upon death.

While there are many benefits to having a Will in place, there are some things that may not be accomplished in a Will. It is important to keep in mind that some items may not flow through your estate and thus may not be distributed in accordance with your Will.

During the estate planning process, it is important to speak with a lawyer experienced in such matters and knowledgeable of your unique situation.

A well-designed estate can help minimize probate costs, estate taxes and can alert you to any potential statutory claims, that may impact your ability to deal with your assets as intended.

A lawyer can discuss any potential claims that a "dependant" may have under Law, and/or with respect to any potential claims or entitlements. An awareness of such responsibilities and rights can help prevent unintended consequences or surprises upon death.

In addition to certain statutory claims, there are other legal limitations that must be considered when drafting a Will.

Documents such as a marriage or cohabitation agreement, a separation agreement, or a shareholder's agreement (with buy/sell provisions, or option agreements) may also affect your Will plan, and thus it is important that such information be shared with your representative(s) when designing an estate plan.

In addition to determining how your estate will be distributed, a lawyer can speak to you about choosing a Personal Representative (Executor), and the considerations involved in selecting an appropriate person (or professional) to administer your estate.

The potential responsibility and work involved in being a Personal Representative (Executor) can be significant, and thus appointing someone with the financial acumen and willingness to take on this responsibility is a must.

Often times, people assume they must appoint a relative or child to act as a Personal Representative (Executor) because it would be "an honor". While it may be considered "an honor" for some, the primary considerations should be choosing someone with the patience, ability and willingness to carry out this responsibility.

Powers of Attorney

A power of attorney is an instrument by which a person (principal) authorizes another person (the "Agent") to act on his or her behalf. It is quite common for people to execute a power of attorney for healthcare and a power of attorney for property and finance at the same time of drafting a Will.

In a power of attorney for property and finance, the authority granted to an Agent may be general in nature and thus may authorize the Agent, to act on the grantor's behalf in conducting his or her financial affairs. Alternatively, the power of attorney may be quite narrow, authorizing the attorney to perform specific acts, such as the sale of specific assets (house, car etc.), the conduct of banking, or the transfer of securities.

Similarly, in a power of attorney for healthcare, the authority granted to an Agent is the authority to make, on his or her behalf, decisions concerning the grantor's personal care, such as healthcare, shelter, nutrition, clothing, hygiene and safety.

While you can appoint more than one attorney, it is important to decide whether they are to act "jointly" or "jointly and severally". Depending upon where your Agent resides, such a distinction may have significant practical considerations.

Information Gathering

Upon death, one of the first things to do is to gather as much information as possible. It is important to look for and gather any Wills, deeds, financial documents, notes and insurance policies, etc., that the deceased may have.

As a starting point, the testator should consult the testator's lawyer as sometimes original Wills have been kept at the lawyer's office.

Upon death, you may want to ask the lawyer to provide notarized copies of the deceased's Will.

Before estate matters can be pursued (i.e. transferring a house or automobile, other legal matters), a copy of the death certificate is also required.

Please speak to the funeral home about obtaining certified copies of the death certificate (as some agencies will not accept photocopies).





Probate

Common questions from a newly entrusted/appointed Personal Representative are "What is probate?" - "Why do we need it?" - "Do we have to probate?".

Probate is a rather formal procedure, establishing the validity of the Will and is the official "proving" of the Will.

Fortunately, not all Wills need to go through probate; such a determination will be dependent upon a testator's unique situation. Probate asks for the court's involvement. The process can have a large range of both cost and time required to complete, depending on the complexity of assets, debts and disputes.

Whether to spend your time and effort planning to avoid probate may or may not be an appropriate goal; depending on the size and complexity of your estate. Even if avoiding probate isn't necessary, putting a plan in place for the care of children and distribution of assets, is important to prevent disputes among family and to provide for loved ones. Regardless, the more information you share with your attorney and your personal representative, the more likely you are to have an estate plan that best fits your needs.

This guide is not intended to be a substitute for specific individual tax, legal, or estate settlement advice, as certain of the described considerations will not be the same for every estate. Accordingly, where specific advice is necessary or appropriate, consultation with a competent professional is strongly recommended.

Question #1 What Is Probate?

Probate is a legal process where your named Personal Representative goes before a court and does several things:

- Identifies all property owned by the deceased.
- Appraises the property and pays all debts and taxes.
- Proves that the Will is valid and legal and distributes the property to the heirs as the Will instructs.

Typically, probate involves paperwork and court appearances by lawyers. The lawyers and court fees are paid from estate property, which would otherwise go to the people who inherit the deceased person's property.

Probate usually works like this: After your death, the person you named in your Will as Personal Representative or, if you die without a Will, the person appointed by a judge, files papers in the local probate court.

The executor proves the validity of your Will and presents the court with lists of your property, your debts and who is to inherit what you've left. Then relatives and creditors are officially notified of your death.

Question #2 Why Is Probate Necessary?

The primary function of probate is transferring title of the descendant's property to their heirs and/or beneficiaries. If there is no property to transfer, there is usually no need for probate. Another function of probate is to provide for the collection of any taxes due by reason of the deceased's death or on the transfer of their property.

The probate process also provides a mechanism for payment of outstanding debts, taxes of the estate, for setting a deadline for creditors to file claims (thus foreclosing any old or unpaid creditors from haunting heirs or beneficiaries) and for the distribution of the remainder of the estate's property to ones' rightful heirs.

Question #3 How Long Does Probate Take?

The duration varies with the size and complexity of the estate, the difficulty in locating any beneficiaries of the Will, if there is one and under the law.

If there is a Will contest, or anyone objects to any actions of the Personal Representative, the process can take a long time. Some matters have taken decades to resolve.

Question #4 What Is The Probate Process Of An Uncontested Will?

Typically the person named as the deceased's Personal Representative (a more formal term is "Executor" or "Executrix") goes to an attorney experienced in probate matters, who then prepares a "Petition" for the court and takes it, along with the Will and files it with the probate court.

The lawyer for the person seeking to have the Will admitted to probate typically must notify all those who would have legally been entitled to receive property from the deceased, if the deceased died without a Will. Additionally, contact those named in the Will to give them an opportunity to file an objection in admitting the Will to probate.

A hearing on the probate petition is typically scheduled several weeks to months after the matter is filed.

Depending on who the named beneficiaries are, how long before the death the Will was signed, whether the Will was prepared by an attorney, who supervised the "execution" of the Will, and/or whether the Will was executed with certain affidavits, it may be necessary to bring in the persons who witnessed the deceased's signature on the Will.

If no objections are received and everything seems in order, the court approves the petition, appoints the Personal Representative, orders that taxes and creditors be paid and requires the Personal Representative to file reports with the court, to assure all the deceased's property is accounted for and distributed in accordance with the terms and conditions of the Will.

Question #5 Who Is Responsible For Handling Probate?

In most circumstances, the executor named in the Will takes this job. If there isn't any Will, or the Will fails to name an executor, the probate court names someone (called an administrator) to handle the process - most often the closest capable relative, or the person who inherits the bulk of the deceased person's assets.

If no formal probate proceeding is necessary, the court does not appoint an estate administrator. Instead, a close relative or friend serves as an informal estate representative. Normally, families and friends choose this person, it is not uncommon for several people to share the responsibilities of paying debts, filing a final income tax return and distributing property to the people who are supposed to get it.

Question #6 Should I Plan To Avoid Probate?

Probate can be costly and time-consuming, but sometimes strategies to avoid probate can be even more costly or have other downsides. Sometimes probate is the most efficient option. The answer varies depending on which state you live in, what assets you have and where you would like those assets to go upon your death.

One option to avoid probate is to transfer all of your assets into a revocable living trust, of which you are the trustee, which contains many of the same directions and guidelines as a Will. There are many benefits and drawbacks to doing so, so seek guidance from an experienced estate planning attorney regarding your specific situation.

One instance where the benefits often outweigh the drawbacks is if you own real estate in more than one state. Typically, an estate will need to go through probate in each state in which you own real property, so expenses can add up quickly.

Another instance where a trust may be of help is if you are elderly or disabled and want a better mechanism than power of attorney for someone to manage your assets for yourself or your family.

NO LEGAL ADVICE INTENDED: THIS GUIDE IS NOT INTENDED TO BE CONSTRUED AS LEGAL ADVICE. THESE MATERIALS ARE INTENDED FOR GENERAL INFORMATIONAL PURPOSES ONLY AND MAY NOT REFLECT THE MOST RECENT LEGAL DEVELOPMENTS. YOU SHOULD CONTACT AN EXPERIENCED ESTATE PLANNING AND/OR PROBATE ATTORNEY FOR ADVICE ON SPECIFIC LEGAL PROBLEMS OR ISSUES.

To My Family and Loved Ones

I wish to spare you as much anxiety, doubt and confusion as possible at the time of my death, so in this booklet, I have suggested some arrangements in advance.

This booklet includes vital statistics, funeral service guidelines and cemetery requests, which are all important to share with the funeral director at Walnut Lawn Funeral Home, Ltd. DeGraffenreid-Wood-Crematory while assisting you to plan my service.

The booklet also includes more personal material for eulogies, obituaries and other remembrances as well as advice and guidance on other important issues you may come across.

Please accept these arrangements in the spirit they are given: with love, hoping to give you comfort, and help you to remember the times we shared.

Signature: _____

Date: _____

Witness: _____

Date: _____

Person to be notified first upon my death (person to oversee my funeral arrangements):

Name: _____

Address: _____

Telephone: _____

Relationship: _____

Notes: _____

Preneed Plan

☐ My preneed plan is on file at Walnut Lawn Funeral Home, Ltd. DeGraffenreid-Wood-Crematory, 2001 West Walnut Lawn, Springfield, MO 65807 tel: (417) 886-6127.

☐ It is fully funded ☐ Insurance policy (Specify: _____) ☐ My plan is not funded - only information is on file

*Attach preneed plan and contract to this book.

Information for a Newspaper Announcement

Place of Death: _____

Date of Death: _____

Spouse: _____

Married for number of years: _____

Children, their spouses: _____

Grandchildren, their spouses: _____

Siblings, their spouses: _____

Education: _____

Clubs and Lodges: _____

Military Service: _____

Special interests, hobbies and pets, etc: _____

Memorial donations: _____

Newspaper(s) and Locations for Paid Obituaries: _____

Vital Information About Me

Full Name (First, Middle, Last): _____

Maiden Name: _____

Address: _____

City: _____

County: _____ Zip Code: _____

Length of Time at Current Residence: _____

Social Security Number: _____

Date of Birth: _____ Gender: _____

Place of Birth (City, State): _____

Occupation (if retired, occupation before retirement): _____

Employer: _____

Business/Industry: _____

Military Service: _____

Marital Status: _____

Name of Spouse (incl. Maiden Name): _____

Father's Name: _____

Father's Place of Birth (City, State): _____

Mother's Name (incl. Maiden Name): _____

Mother's place of birth (City, State): _____

Highest Level of Education: _____

Notes: _____

Preferences for My Service & Personal Life Review

Type of Disposition: ☐ Cremation ☐ Casket Burial

Type of Service: ☐ Traditional Service with Casket Burial ☐ Traditional Service with Cremation Afterwards

☐ Cremation Memorial Service ☐ Other: _____

My preference for the location of the Service or Celebration of Life:

☐ Funeral Home ☐ Outside Venue ☐ Place of Worship ☐ Other

Address of venue, place of worship or other location: _____

Name of Clergy or Officiant: _____

Contact Information: _____

Urn Chosen: _____ Type of Casket (type, color): _____

Outer Burial Container: _____

Pallbearers (Six are recommended for casket burial / four for urn bier)

1. _____ 5. _____

2. _____ 6. _____

3. _____ 7. _____

4. _____ 8. _____

Personal Items: _____

Eyeglasses: ☐ Remove ☐ Leave on ☐ Donate to Lion's Eye Institute

Jewelry: ☐ Remove ☐ Leave on Clothing: _____

Music - Favorite Genre or Artist: _____

Soloist: _____ Organist/Pianist: _____

Congregational Hymns: _____

Community Organizations or Clubs that may participate: _____

I would like the following religious beliefs expressed: _____

Favorite poem, verse or scripture: _____

Some significant accomplishments in my life:

One of my fondest memories:

One of the greatest inspirations in my life:

If I could live my life over again, I would change:

Favorite places:

Favorite color, flower, food, etc:

I want my family to remember me for:

A message to my family and friends:

Schools attended with degrees:

Other notes:

Cemetery Instructions

The following are my wishes regarding my final resting place.

Name of Cemetery: _____

Address: _____

City: _____ County/State: _____

Property, Crypt or Niche Owned? ☐ Yes ☐ No

If yes, specify location written on cemetery purchase agreement: _____

Final Resting Place: ☐ Earth burial ☐ Mausoleum ☐ Niche

☐ Scattering of cremated remains, location: _____

Other: _____

Marker or Monument: _____ Purchased: ☐ Yes ☐ No

Monument company name: _____

Inscription Instructions: _____

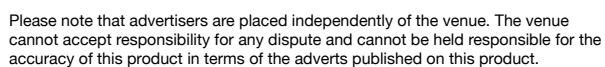
Meal/Reception Food and Details

Reception Location: ☐ Funeral Home ☐ Outside Venue ☐ Place of Worship ☐ Other

Details: _____

Other notes: _____





**A funeral commemorates a life by drawing
together family and friends to support each other
as they share memories.**



**WALNUT LAWN FUNERAL HOME, LTD.
DEGRAFFENREID-WOOD-CREMATORY**

ADDRESS: 2001 WEST WALNUT LAWN, SPRINGFIELD, MO 65807.

PHONE: (417) 886-6127

WEBSITE: WWW.WALNUTLAWNFUNERALHOME.COM

EMAIL: INFO@WALNUTLAWNFUNERALHOME.COM