



CREMATION & FUNERAL CARE

General Price List

Effective Date: July 3, 2023

Integrity Cremation & Funeral Care

2901 S. Washington Street

Marion, IN 46953

765/664-6900 * F: 765/668-3002

Now more than ever, we recognize that many families may find the cost of traditional funeral services beyond their financial resources. Yet, they still wish to honor their loved one's life with care and dignity. Integrity Funeral Care was created with that desire in mind. We offer a range of affordable service and merchandise options. And regardless of the option you select, your experience will be consistent with what you would expect from Needham-Storey-Wampner Funeral & Cremation Service standards of excellence.

We believe that every life is special and deserves to be remembered. We are committed to serving all with dignity and compassion. To that end, we offer a diverse array of goods and services which are sensitive to the personal preferences and financial situations of those we serve.

Please feel free to ask the members of our staff for further explanation of our services and charges. The goods and services shown within are those we can provide to our families. You may choose only the items you desire. However, any funeral arrangements you select will include a charge for our basic services and overhead. If legal or other requirements mean you must buy items you did not specifically ask for, we will explain the reason in

Payment Policy

Because we have an obligation to the community to see that our business continues to operate in a fiscally responsible manner, and to ensure that our prices remain reasonable and affordable, we offer the following payment options.

Unless the funeral bill is being paid with an existing prepaid trust or a verifiable insurance assignment, payment is expected prior to services being rendered and prior to publication of the obituary.

Certain services may qualify for Veterans Administration, State, or County Benefits. When appropriate, we will discuss these benefits with you and assist in preparation and filing of any required paperwork.

Cash Advance Items

As part of our services, we offer to assist in the planning and purchase of goods and services provided by third parties. **Payment for these items is expected at the time of arrangement.** Occasionally, we will only have an estimate of some of these amounts at the time of arrangement. The purchaser will be responsible for paying the actual costs of these items. Cash advance items paid by credit card or insurance assignment will incur a 4% service fee (minimum fee of \$125 for insurance assignment under \$5,000).

Forms of Payment

Prepaid Funeral Trust or Insurance Trust: If the services have been prepaid either at Integrity Funeral Care or at another funeral establishment, no payment is expected. If additional items are requested at the time services are rendered, payment for those items is expected prior to services being rendered.

Insurance Assignment: Our staff is happy to assist you with any life insurance claims that need to be made. Oftentimes, the insurance company will honor an assignment, whereby the funeral bill is paid out of the insurance funds. Simply bring your policies to us, and we do the rest.

Cash or Check: Cash, personal checks or cashier checks are acceptable forms of payment.

Credit Card Payment: We accept Visa, MasterCard, Discover and American Express as acceptable forms of payment.

Crowdfunding & Other Financing: Some families may choose to use crowdfunding or third party financing. In those circumstances, payment in full is expected prior to the provision of services. We are unable to assist with the establishment of a crowd funding account and, because we are not regulated like the banking industry, we cannot establish credit terms and arrange for payment plans.

Medicaid or Township Trustee: We work closely with Medicaid and Township Trustees for families who are unable to pay the listed prices for services. We provide a service in relation to funds approved by these resources.

General Price List

Professional Services

Basic Services of Funeral Director and Staff..... \$2,520.00

Our fee for the basic services of funeral director and staff includes, but is not limited to, staff to respond to initial request for service; arrangement conference with family and responsible parties; arrangement of funeral; preparation and filing of necessary authorizations and permits; recording vital statistics; preparation and placement of obituary notices; and coordination with those providing other portions of the funeral, e.g. cemetery, crematory, vault companies and others as required.

*This fee for our basic services will be added to the total cost of the funeral arrangements

Preparation of the Deceased

Embalming..... \$980.00

Except in certain special cases, embalming is not required by law. Embalming may be necessary, however, if you select certain funeral arrangements, such as a funeral with viewing. If you do not want embalming, you usually have the right to choose an arrangement that does not require you to pay for it, such as direct cremation or immediate burial.

Other Preparation of the Body

- A. Dressing, and casketing of remains..... \$275.00
- B. Cosmetology..... \$190.00
- C. Hairdresser..... \$ 70.00
- D. Reconstruction Restoration when Necessary (per hour)..... \$200.00
- E. Washing, disinfecting, dressing and casketing body when not embalmed.... \$270.00

Direction of Services and Use of Facilities

- A. Use of facilities and staff for viewing (per day, up to 4 hours), or additional staff necessary for viewing in other facility..... \$1,300.00
- B. Use of facilities and staff for viewing (per additional hour), or additional staff necessary for viewing in other facility..... \$200.00
- C. Use of facilities and staff for funeral ceremony, or additional staff necessary for ceremony in other facility..... \$1,300.00
- D. Use of facilities and staff for memorial service (without body), or additional staff necessary for memorial service in other facility..... \$1,300.00

General Price List

Direction of Services and Use of Facilities (Continued)

E. Use of equipment and staff for graveside service*	\$490.00
F. Supervision of placement, in cemetery, of human cremated remains by an Indiana Licensed Funeral Director including committal service and obtaining an Indiana Burial Transit Permit*	\$350.00
G. Holding of Remains over 5 days	\$50.00/day
H. Indiana Licensed Funeral Director present at cemetery for compliance with Indiana law*	\$100.00
I. Charge for in-person and/or phone arrangements and subsequently transferring to another provider	\$250.00
J. Saturday visitation, funeral service, or memorial service in addition to standard charges (does not include charge for additional hours)	\$300.00
K. Evening visitation, funeral service, or memorial service in addition to standard charges (does not include charge for additional hours)	\$300.00
J. Sunday and holiday visitation, funeral service, or memorial service in addition to standard charges (does not include charge for additional hours)	\$500.00

Automotive Equipment

A. Transfer of remains to funeral home*	\$325.00
B. Hearse (Funeral Coach)*	\$435.00
C. Limousine (7 passengers, as available)*	\$500.00
D. Service/Flower Car (used as lead vehicle for procession)*	\$215.00
E. Transportation to/from Indianapolis/Fort Wayne Airport	\$200.00

**Within radius of 25 miles. The charge for additional miles is \$4.00 per mile.*

Merchandise

Caskets..... Starting at \$695

Personalization and Customization available for an additional charge

Alternative Containers..... Starting at \$150

Outer Burial Containers..... Starting at \$900

Cremation Outer Burial Containers..... Starting at \$450

Cremation Urns & Keepsakes..... Starting at \$36

Personalization and Customization available for an additional charge

Clothing..... As Selected

Merchandise is taxable by the state of Indiana and will be charged state sales tax rates.

General Price List

Transfer of Remains

Forwarding of Remains to Another Funeral Home *(without receptacle)*..... \$2,970.00

Our charge includes: basic services of funeral director and staff; a proportionate share of overhead costs; transfer of remains; embalming or other preparation of remains if relevant; local transportation (does not include shipping container and/or casket).

Receiving of Remains from Another Funeral Home..... \$1,995.00

This charge includes temporary shelter of remains, transfer of remains to funeral home, transportation of remains to cemetery or crematory and required services of staff. It does not include the services of staff or the use of facilities for viewing or for funeral rites/ceremonies.

with Graveside Service..... \$2,485.00

Immediate Burial.....Starting at \$2,950.00

This charge includes transfer of remains, local transportation to the cemetery, necessary authorizations and basic services of staff. It does not include the services of staff or the use of facilities for viewing or for funeral rites/ceremonies.

A. Immediate burial with casket provided by purchaser *(signed liability statement requested)*..... \$2,950.00

B. Immediate burial with grey cloth fiberboard casket selected from our funeral home..... \$3,800.00

C. Immediate burial with casket selected from our funeral home (plus cost of casket with state sales tax)..... \$2,950.00

Direct Cremation *(price range)*.....Starting at \$2,245.00

This charge includes transfer of remains, local transportation to the cemetery, necessary authorizations, basic services of staff, cremation process up to 499 lbs.; and society cremation urn. It does not include the services of staff or the use of facilities for viewing or for funeral rites/ceremonies.

A. Direct cremation with container provided by purchaser *(signed liability statement requested)*..... \$2,245.00

B. Direct cremation with cardboard container selected from our funeral home.. \$2,395.00

C. Direct cremation with casket selected from our funeral home (plus cost of casket with state sales tax).....Starting at \$2,245.00

Receiving of Human Cremated Remains from Another Funeral Home with a Memorial Service..... \$1,650.00

This charge includes temporary shelter of cremated remains, use of facilities and staff for memorial service, or additional staff necessary for service in other facility. (This is used when a cremation occurs at another funeral home. Oversight of placement at cemetery not included).

Merchandise and Other Fees

Transfer of Remains *(Continued)*

Receiving of Human Cremated Remains from Another Funeral Home with a Graveside Service..... \$1,650.00

This charge includes temporary shelter of human cremated remains, use of equipment and staff for graveside service. (This is used when a cremation occurs at another funeral home.)

Other Merchandise and Services

Acknowledgement Cards.....	Starting at \$25.00
Airtray <i>(Ships with Casket)</i>	\$225.00
Additional marker dating.....	Starting at \$125.00
Appliques and medallions.....	Starting at \$20.00
Additional Video Production.....	\$50.00/hr
Angel.....	\$10.00
Bezel.....	\$10.00
Casket Cap Panels.....	Starting at \$200.00
Casket Corner Piece.....	\$40.00
Copy of Video Tribute on Flash Drive or DVD <i>(Sales Tax Included)</i>	\$20.00
Cross or Crucifix.....	\$40.00
Death Certificates when we did not perform services:	cost of Death Certificates plus \$10.00
Flag Cases.....	\$170.00
Keepsake Plaque.....	\$75.00
Life Panel Production.....	\$70.00
Life Panels <i>(Sales Tax Included)</i>	Starting at \$20.00
Medallion Cases.....	Starting at \$45.00
Medallion Photo Chest or Photo Frame.....	\$95.00
Memorial Blanket.....	\$200.00
Memorial Bulletins.....	\$150.00
Memorial Folders.....	Starting at \$70.00
Obituary Preparation when we did not perform services:.....	cost of Obituary plus \$100.00
Prayer Cards.....	Starting at \$70.00
Preparation of a Video Tribute.....	\$200.00
Register Book.....	Starting at \$40.00
Register Packages.....	Starting at \$125.00
Shadow Box.....	\$95.00
Shipping of Human Cremated Remains.....	Starting at \$100.00

**Merchandise is taxable by the state of Indiana and will be charged state sales tax rates.*

Traditional Funeral Package Selections

Packages are only available when all of the following conditions are met:

- 1. Service takes place at Integrity Funeral Care*
- 2. Service times are limited to Monday through Friday between 10am and 2 pm*
- 3. Casket is purchased from Integrity Funeral Care*

Package A. Integrity Single Day Traditional Funeral Service

This selection includes basic services of the funeral director and staff; transfer of the remains to the funeral chapel within 25 miles; embalming, cosmetizing, dressing and casketing of the remains, hairdresser; use of facilities and staff for viewing (up to 1 hour) and funeral ceremony (same day up to 1 hour) at the funeral home; hearse; service/flower car; committal or other disposition service; basic register book, service folders, thank you cards; and choice of 20 gauge steel non-gasketed.

Package with Spectra Casket: \$5,120.00

Package with Gemini Casket: \$4,820.00

Package with Apollo Casket: \$4,520.00

Package B. Graveside Service with Up to 1 Hour of Visitation: \$3,600.00

This selection includes basic services of the funeral director and staff; transfer of the remains to the funeral chapel within 25 miles; embalming, cosmetizing, dressing and casketing of the remains, hairdresser; use of facilities and staff for viewing (up to 1 hour), or additional staff necessary for viewing in other facility; hearse; service/flower car; and committal or other disposition service. Does not include casket or alternative container.

Package C. Graveside Service \$3,445.00

This selection includes basic services of the funeral director and staff; transfer of the remains to the funeral chapel within 25 miles; embalming, cosmetizing, dressing and casketing of the remains, hairdresser; hearse; service/flower car; and graveside service. Does not include casket or alternative container.

**Total charge for package does not include Indiana state sales tax on merchandise, out-of-town transportation, cemetery charges, or third-party charges (death certificates, honorariums, newspaper obituaries, flowers and others).*

Cremation Package Selections

Packages are only available when all of the following conditions are met:

- 1. Service takes place at Integrity Funeral Care*
- 2. Service times are limited to Monday through Friday between 10am and 2 pm*
- 3. Casket is purchased from Integrity Funeral Care*

If any of the preceding conditions are not met, the selected goods and services will be priced utilizing itemized pricing as set within the General Price List.

Package D: Integrity Traditional Single Day Funeral Service with Cremation Options

This selection includes basic services of the funeral director and staff; transfer of the remains to the funeral chapel within 25 miles; embalming, cosmetizing, dressing and casketing of the remains, hairdresser; use of facilities and staff for viewing (up to 1 hour) and funeral ceremony (same day up to 1 hour) at funeral home; cremation process up to 499 lbs.; basic register book, service folders, and thank you cards; choice of cremation rental casket; and society cremation urn.

Integrity Aria Cremation Package (includes Aria rental): \$4,690.00

Integrity Oakwood Cremation Package (includes Oakwood rental): \$4,390.00

Integrity Reflections Cremation Package (includes Reflections rental): \$4,190.00

Package E: Integrity Cremation with Memorial Service: \$3,885.00

This selection includes basic services of the funeral director and staff; transfer of the remains to the funeral chapel within 25 miles; alternate care of the deceased (dressing of the deceased with limited identification); use of facilities and staff for memorial viewing (up to 1 hour) and memorial service (same day up to 1 hour); process up to 499 lbs.; minimum cardboard cremation container; and society cremation urn.

Package F: Integrity Private Viewing with Cremation: \$2,500.00

This selection includes basic services of the funeral director and staff; transfer of the remains to the funeral chapel within 25 miles; alternate care of the deceased (dressing of the deceased with limited identification); use of chapel and lounge for private family gathering (15 people for up to one hour); and process up to 499 lbs.; minimum cardboard cremation container; and society cremation urn.

1) Total charge for package does not include Indiana state sales tax on merchandise, out-of-town transportation, cemetery charges, or third-party charges (death certificates, honorariums, newspaper obituaries, flowers and others).

2) All packages include Integrity Funeral Care online obituary, if an obituary is desired.

Public Assisted Funeral Options

Public assistance is defined as when a family seeks financial assistance from federal, state, or local government agencies for payment of funeral and/or burial expenses.

When seeking public assistance, arrangements for funeral services, burial, or cremation, cannot move forward until eligibility is confirmed.

All family contributions must be paid in full prior to finalizing arrangements (family contribution for Medicaid is up to \$2,500.00 and family contribution for Trustee is dependent upon Township Trustee).

When seeking assistance from a township trustee, it is the responsibility of the person making the arrangements to contact the township trustee, in the township in which the deceased lived, and make application for assistance and be approved by that township trustee.

Monday through Friday between 10:00 AM and 2:00 PM

Township Trustee Cremation

This selection includes basic services of the funeral director and staff; transfer of the remains to the funeral chapel within 25 miles; washing, disinfecting, dressing and casketing of the of the body when not embalmed; cremation process fee; standard black temporary container for human cremated remains.

Total Charge and Family Contribution.....Determined by Township Trustee

Medicaid Direct Cremation Package

This selection includes basic services of the funeral director and staff; transfer of the remains to the funeral chapel within 25 miles; washing, disinfecting, dressing and casketing of the body when not embalmed; process up to 499 lbs.; and society cremation urn.

Family Contribution (includes sales tax).....\$1,195.00

Medicaid Contribution.....\$1,200.00

Medicaid Traditional Service Package

This selection includes basic services of the funeral director and staff; transfer of the remains to the funeral chapel within 25 miles; embalming, cosmetizing, dressing and casketing of the remains; use of facilities and staff for viewing (up to 1 hour) and funeral ceremony (same day up to 1 hour) at funeral home; service/flower car; committal or other disposition service; paper register book; and Apollo Copper Non-Gasketed Steel casket.

Family Contribution (includes sales tax).....\$2,500.00

Medicaid Contribution.....\$1,200.00

*All packages include Integrity Funeral Care online obituary, if an obituary is desired.

Public Assisted Funeral Options

Public Assisted Funeral Options (Continued)

Public assistance is defined as when a family seeks financial assistance from federal, state, or local government agencies for payment of funeral and/or burial expenses.

When seeking public assistance, arrangements for funeral services, burial, or cremation, cannot move forward until eligibility is confirmed.

All family contributions must be paid in full prior to finalizing arrangements (family contribution for Medicaid is up to \$2,500.00)

Monday through Friday between 10:00 AM and 2:00 PM

Medicaid Traditional Cremation Package

This selection includes basic services of the funeral director and staff; transfer of the remains to the funeral chapel within 25 miles; embalming, cosmetizing, dressing and casketing of the remains; use of facilities and staff for viewing (up to 1 hour) and funeral ceremony (same day up to 1 hour) at funeral home; process up to 499 lbs.; paper register book; reflections rental casket; and society cremation urn.

Family Contribution (includes sales tax).....	\$2,500.00
Medicaid Contribution.....	\$1,200.00

Medicaid Memorial Service Package

This selection includes basic services of the funeral director and staff; transfer of the remains to the funeral chapel within 25 miles; washing, disinfecting, dressing and casketing body when not embalmed; use of facilities and staff for memorial visitation (no body present, up to 1 hour) and memorial service (same day up to 1 hour) at funeral home; process up to 499 lbs.; paper register book; minimum cardboard cremation container; and society cremation urn.

Family Contribution (includes sales tax).....	\$1,750.00
Medicaid Contribution.....	\$1,200.00

*All packages include Integrity Funeral Care online obituary, if an obituary is desired.

Caskets

Integrity Cremation & Funeral Care
2901 S. Washington Street
Marion, Indiana 46953

Casket Price List
These prices are effective
as of January 30, 2023, but are
subject to change without notice.

Disclaimer of Warranties: Integrity Cremation & Funeral Care makes no representations or warranties regarding the caskets listed below. The only warranties, expressed or implied, granted in connection with caskets sold are the express written warranties, if any, extended by the manufacturers thereof. Integrity Cremation & Funeral Care hereby expressly disclaims all warranties, expressed or implied, relating to caskets, including, but not limited to the implied warranties of merchantability and fitness for a particular purpose.

Caskets



Hercules 32" - \$2,895

Hercules 28" - \$2,395

20 Gauge Non-Gasketed Steel Silver
Exterior w/Ivory Crepe Interior



Aries Blue - \$2,395

20 Gauge Gasketed Blue Painted Steel
Exterior w/Blue Crepe Interior



Aries Copper - \$2,395

20 Gauge Gasketed Copper Painted
Steel Exterior w/Rosetan Crepe Interior



Aries Orchid - \$2,395

20 Gauge Gasketed Blue Painted Steel
Exterior w/Pink Crepe Interior



Aries Silver - \$2,395

20 Gauge Gasketed Silver Painted Steel
Exterior w/Ivory Crepe Interior



Aries White - \$2,395

20 Gauge Gasketed White Painted
Steel Exterior w/Ivory Crepe Interior

Caskets

Caskets (continued)



Pisces Sand - \$2,195
20 Gauge Gasketed Sand Painted Steel
Exterior w/Rosetan Crepe Interior



Pisces Silver - \$2,195
20 Gauge Gasketed Silver Painted Steel
Exterior w/Ivory Crepe Interior



Pisces White - \$2,195
20 Gauge Gasketed White Painted
Steel Exterior w/Ivory Crepe Interior



Spectra Black - \$1,995
20 Gauge Non-Gasketed Black Painted
Steel Exterior w/Ivory Crepe Interior



Spectra Blue - \$1,995
20 Gauge Non-Gasketed Blue Painted
Steel Exterior w/Blue Crepe Interior



Spectra Orchid - \$1,995
20 Gauge Non-Gasketed Orchid Painted
Steel Exterior w/Pink Crepe Interior



Spectra Silver - \$1,995
20 Gauge Non-Gasketed Silver Painted
Steel Exterior w/Ivory Crepe Interior



Spectra White - \$1,995
20 Gauge Non-Gasketed White Painted
Steel Exterior w/Ivory Crepe Interior



Gemini Blue - \$1,695
20 Gauge Non-Gasketed Blue Painted
Steel Exterior w/Blue Crepe Interior

Caskets

Caskets (continued)



Gemini Copper - \$1,695
20 Gauge Non-Gasketed Copper Painted
Steel Exterior w/Rosetan Crepe Interior



Gemini Silver - \$1,695
20 Gauge Non-Gasketed Silver Painted
Steel Exterior w/Ivory Crepe Interior



Gemini White w/Pink Int. - \$1,695
20 Gauge Non-Gasketed White Painted
Steel Exterior w/Pink Crepe Interior



Gemini White w/White Int. - \$1,695
20 Gauge Non-Gasketed White Painted
Steel Exterior w/Ivory Crepe Interior



Apollo Copper - \$1,395
20 Gauge Non-Gasketed Copper Painted
Steel Exterior w/Rosetan Crepe Interior



Aria Rental Casket - \$1,395
Dark Hardwood Exterior
Rosetan Crepe Interior Insert



Oakwood Rental - \$1,095
Medium Stain Hardwood Exterior
Rosetan Crepe Interior Insert



Reflection Rental - \$895
Natural Hardwood Exterior
Rosetan Crepe Interior Insert



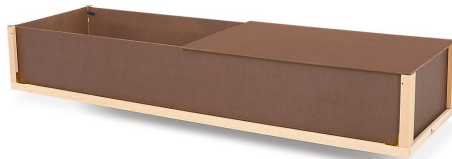
Starmark Harmony Deluxe - \$695
Blue Cloth Covered Fiberboard
Exterior w/Ivory Crepe Interior

Caskets (continued)



Stratus - \$695

Printed Woodgrain Wood Composite
(MDF) Exterior, No Fabric Interior



Standard Brown - \$495

Dark Brown Wood Composite (MDF)
Exterior, No Fabric Interior



Trayview - \$225

Brown Cardboard Exterior



Basic Cardboard - \$150

Basic Cardboard Exterior

Outer Burial Containers

Outer Burial Containers

Integrity Cremation & Funeral Care
2901 S. Washington Street
Marion, Indiana 46953

Outer Burial Container Price List
These prices are effective as of January 30, 2023, but are subject to change without notice.

In most areas of the country, state or local law does not require that you buy a container to surround the casket in the grave. However, many cemeteries require that you have such a container so that the grave will not sink in. Either a grave liner or a burial vault will satisfy these requirements. Vaults are designed to resist the entrance of outside elements such as water, air, dirt or other elements.

Disclaimer of Warranties: Integrity Cremation & Funeral Care makes no representations or warranties regarding the outer burial containers listed below. The only warranties, expressed or implied, granted in connection with the outer burial containers are the express written warranties, if any, extended by the manufacturers thereof. Integrity Cremation & Funeral Care hereby expressly disclaims all warranties, expressed or implied, relating to the outer burial containers, including, but not limited to, the implied warranties of merchantability and fitness for a particular purpose.

Setting Fee Charge: \$495.00

Sunday or Holiday Charge: \$845.00

Saturday Charge: \$645.00

Tent Setup When No Vault is Purchased: \$595.00 (add \$150.00 for Saturday, \$350 for Sunday or Holiday)

Ovation Set-Up: \$55.00

Arrival at Cemetery after 4pm (Overtime per 1/2 Hour): \$ 90.00/per half-hour

Delivery Charges Outside of Base Service Area Apply

Outer Burial Containers



Wilbert Bronze - \$13,900
Triple-reinforced burial vault
Encased Concrete w/Interior Liner



Wilbert Bronze Triune - \$5,300
Double-reinforced burial vault
Concrete w/Bronze Interior Liner



Wilbert Copper Triune - \$4,900
Double-reinforced burial vault
Concrete w/Copper Interior Liner



Stainless Steel Triune - \$3,600
Double-reinforced burial vault
Concrete w/Stainless Steel Interior Liner



Wilbert Cameo Rose - \$3,600
Double-reinforced burial vault
Concrete w/Stainless Steel Interior Liner



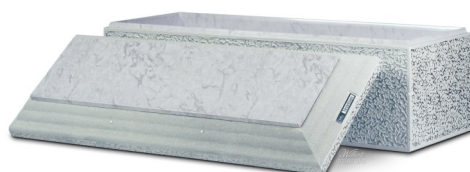
Wilbert Veteran Triune - \$3,600
Double-reinforced burial vault
Concrete w/Stainless Steel Interior Liner

Outer Burial Containers

Outer Burial Containers (continued)



Wilbert Tribute - \$3,200
Double-reinforced burial vault
Fully Encased Concrete



Wilbert Venetian - \$2,200
Single-reinforced burial vault
Concrete w/High-Impact Plastic Interior Liner



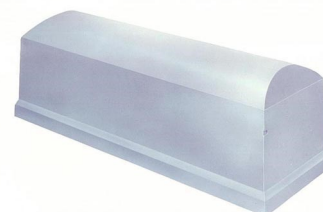
Wilbert Continental - \$1,750
Single-reinforced burial vault
Durable Concrete w/Plastic Interior Liner



Wilbert Salute - \$1,700
Single-reinforced burial vault
Concrete w/Plastic Interior Liner, and
Exclusive Salute Emblem for Veterans



Wilbert Monticello - \$1,650
Single-reinforced burial vault
Concrete w/Plastic Interior Liner



***Air Dome Deluxe** - \$1,500
Air Dome - \$1,250
Painted Steel Reinforced Concrete
Dome w/Plug Base
*Deluxe includes inner asphalt coating



Minimum Grave Liner - \$900
Basic Concrete Liner
Drain Holes and No Sealant

Cremation Outer Burial Containers

Cremation Outer Burial Containers



Bronze Triune Urn Vault - \$1,125
Double-reinforced urn vault
Concrete w/Bronze Interior Liner



Copper Triune Urn Vault - \$1,050
Double-reinforced urn vault
Concrete w/Copper Interior Liner



Stainless Steel Triune Urn Vault - \$995
Double-reinforced urn vault
Concrete w/Stainless Steel Interior Liner



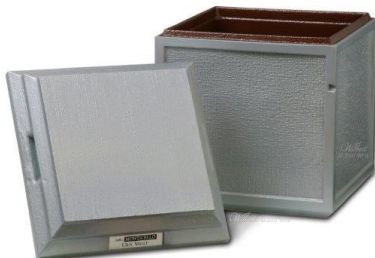
Cameo Rose SST Urn Vault - \$995
Double-reinforced urn vault
Concrete w/Stainless Steel Interior Liner



Veteran SST Urn Vault - \$995
Double-reinforced urn vault
Concrete w/Stainless Steel Interior Liner



Venetian Urn Vault - \$850
Single-reinforced urn vault
Concrete w/High-Impact Plastic Interior Liner



Monticello Urn Vault - \$775
Single-reinforced urn vault
Concrete w/Plastic Interior Liner



Universal Marbelon Urn Vault - \$650
Basic Protection
Marbelon Exterior



Concrete Urn Receptacle - \$450
Basic Concrete Liner
Drain Holes and No Sealant