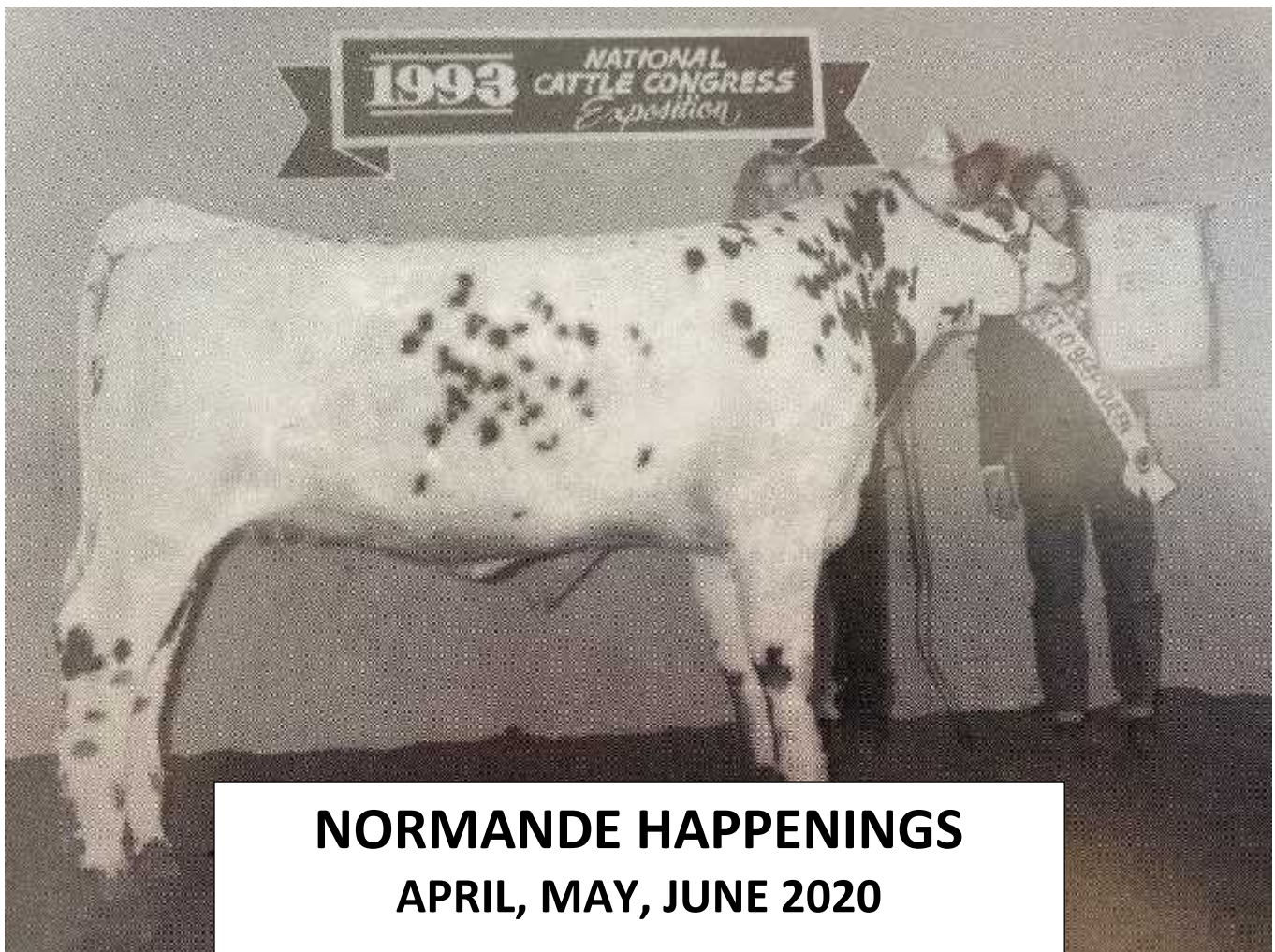




NORTH AMERICAN NORMANDE ASSOCIATION  
748 ENLOE RD.  
REWEY, WI 53580



**NORMANDE HAPPENINGS**  
**APRIL, MAY, JUNE 2020**

## **NANA BOARD OF DIRECTORS**

**PRESIDENT: KEN RABAS (21)**

5330 Eagle Ave. SW  
Kalona, IA 52247  
Phone: 319-461-9825  
Email: [krabas@kctc.net](mailto:krabas@kctc.net)

**LEXA MILLER (22)**

3860 Barlow Rd.  
Mount Horeb, WI 53572  
Phone: 608-669-5924  
Email: [millertymefarms@gmail.com](mailto:millertymefarms@gmail.com)

**VICE-PRES: JEFF BOCK (20)**

368 Page Ln.  
River Falls, WI 54022  
Phone: 715-425-0237  
Email: [jeffgbock@gmail.com](mailto:jeffgbock@gmail.com)

**CHRIS CONLEY (21)**

N2769 Tyler Rd.  
Neosho, WI 53059  
Phone: 920-625-3691  
Email: [hgholsteins@gmail.com](mailto:hgholsteins@gmail.com)

**SECRETARY: BRUCE BOLEN (22)**

14858 Hungry Hollow Rd.  
Greentop, MO 63546  
Phone: 660-665-3919  
Email: [cjbolen@gmail.com](mailto:cjbolen@gmail.com)

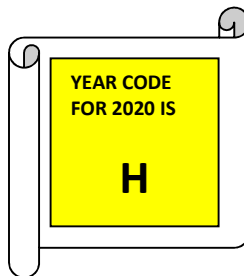
**DEREK VOSBERG (20)**

6998 Cty. Rd. N  
South Wayne, WI 53587  
Phone: 608-214-5753  
Email: [d-man@tds.net](mailto:d-man@tds.net)

**TREASURER/REGISTRY SECRETARY:**

**MICHAEL MUELLER (22)**

748 Enloe Rd.  
Rewey, WI 53580  
Phone: 608-943-6091  
Email: [mjmueller@yousq.net](mailto:mjmueller@yousq.net)



## NANA NORMANDE SHOW HISTORY-PART 1

The NANA Normande shows of the past one dozen years were not the first United States livestock shows NANA members have participated in. Until 2007 NANA did not have an association organized or sponsored Normande show, but that did not keep individual NANA members from exhibiting their Normandes at small town fairs, county fairs, state fairs, and other livestock shows during the late 1970's, 1980's and 1990's. Shows we are aware NANA members exhibited their Normandes at prior to the 2007 NANA sponsored show in Manchester, IA, include the Iowa Beef Expo, the Minnesota State Fair, the World Beef Expo (At Madison and Milwaukee, WI), the Iowa State Fair, the Wisconsin State Fair, a regional livestock show called the Spencer Iowa Show, and many local and county fairs.



Also showing at the World Beef Expo Junior Normande Show were Kevin and Terry Toivola, Hibbing, MN; Ross and Shannon Radel, Spring Green, WI; and Kristina Kasperek, Faribault, MN.



Kevin Toivola, Hibbing, MN

Besides participating in competitive livestock shows, NANA members also took their Normandes to livestock shows as a breed display to promote the breed under the auspices of NANA. Craig Ouverson of Hanlontown, IA, took Normandes to the Great Western Stock Show in Denver, CO for a NANA sponsored live animal exhibit in the late 1970's. Dr. Brian Toivola and family of Hibbing, MN, took Normandes to the Minnesota State Fair, the World Dairy Expo, the World Beef Expo, and the North American International Livestock Exposition in Louisville, KY, for NANA sponsored live animal exhibits during the 1980's and 1990's. Wayne and Lisa Dewey of Iowa Falls, IA, have provided Normandes for the Parade of Breeds feature of the Iowa State Fair for a number of years, and their children, Spencer and Renae, exhibited their Normandes at the Iowa State Fair and Hardin County Fair with very good success. The late Gerald Haus of Prescott, WI, Jeff and Nona Bock of River Falls, WI, and Double M Cattle Company LLC of Rewey, WI have provided Normande animals for NANA's live animal



exhibit in the Beef Tent at Wisconsin Farm Technology Days. And the Richard and Caroline Dibble family of West Winfield, NY, have been prominently exhibiting their Normandes at regional livestock shows, local fairs and county fairs for a good number of years now.

When we look at the show history of the Normande breed in the United States we need to keep the following part of our U.S. breed development history in mind when folks ask us why is there a beef element and a dairy element of Normandes in the United States when in fact Normandes are a dual purpose breed. When Normandes were first imported into the United States, the only farmers who actively became interested in Normandes were beef producers. And for the next twenty years the genetic focus for the breeders of Normandes in the United States was for beef production and beef traits.

Consequently there was very little emphasis on increasing milk production and selecting for quality dairy udders. These breeders were focused on producing meat animals and the Normande breed offered muscularity,

feed efficiency, competitive rate of gain, and an exceptional quality carcass. Thus Normande breeders were entering bulls in beef bull performance tests, beef carcass contests and evaluations, and beef shows.

In the mid 1990's French Normande semen and embryos could once again be imported into the United States and dairy producers became interested in the Normande breed for grazing purposes, cross breeding, and high milk components for butterfat and protein. NANA began promoting the Normande breed within the dairy industry. Another major factor for the dairy industry's interest in Normandes was the establishment of Normande Genetics by Jerome Chateau and his

# Hardin County Fair 2001



The Champion Normande Heifer at the Hardin County Fair was shown by Jessica Olsen, Daughter of Rich and Patti Olsen of Iowa Falls, Iowa. This a DIAMETRIUS 21 WH Full blood daughter out of a BOOTSCOOTER F74 Dam. She also used this same heifer this year to capture the Senior Beef Showmanship Honors. Jessica also showed a Purebred Normande Steer at the fair too. Look at his outstanding carcass results within this newsletter. Way to Go Jessica!



Spencer Dewey at the Hardin Co. Fair with his  $\frac{3}{4}$  Normande Heifer. He received Reserved Champion. Spencer is a member of the Ellis Jackson Ag Stars 4-H Club in Iowa Falls, Iowa. Spencer is the son of Wayne and Lisa Dewey.



Renae Dewey at the Hardin Co. Fair with her  $\frac{3}{4}$  Normande Heifer. She received a blue ribbon. Renae also had a Normande Bucket Calf project as well. Renae is a member of the Ellis Jackson Ag Stars 4-H Club in Iowa Falls, Iowa. Renae is the daughter of Wayne and Lisa Dewey



Spencer Dewey at the Hardin Co. Fair with his cow/calf pair. He placed 2<sup>nd</sup> in the Purebred Cow Calf Class next to the Champion Cow Calf Pair.

Congratulations to these fine young people on a job well done on their projects!



efforts to sell French Normande semen to dairy producers all over the United States. Normande Genetics also facilitated the importation of full blood embryos from France. The results for the Normande breed in the United States was an increase in the presence of Normandes in dairy producer herds. And the consequence for Normandes and NANA in the U.S. was a dairy and a beef element that were somewhat separate even though Normandes are considered a dual purpose breed.

While reviewing earlier issues of Normande Happenings from the late 1990's and early 2000's we came across an article about the show efforts of Richard and Donna Platt from Hebron, MT, and their son, Ty, during the early 1990's. (Their picture is on page 8, lower right.) One of those years their mature full blood Normande bull was selected Grand Champion Bull over all breeds at their county fair, beating out a black Angus bull. The Platt's also dominated the carcass



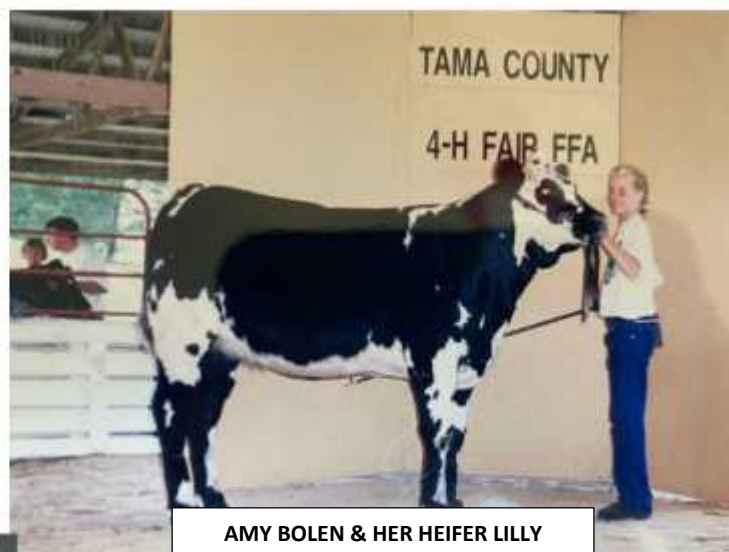
**SCOTT BOLEN & HIS CHAMPION TAMACO STEER**

numerous shows. The Tama County Fair, the Iowa Beef Expo, World Beef Expo were all included in their showing endeavors. Our Normande Happenings "cover girl" is one of their many show ring winners.

Sara started showing calves at the Tama County Fair and had the Grand Champion Commerical Heifer her very first year. To Sara's disappointment her heifer was not chosen for Supreme or Reserve Supreme Heifer. But then for the next five years Sara showed Reserve Supreme Heifer each year. She also had a Champion Cow/Calf pair one year. One particular year Sara had two really good heifers, so Dave gave her the opportunity to pick one to show and her younger sister Amy would show the other.

contest for their Sanders County Fair. While their son Ty was showing in 4-H, he had the Champion Carcass four times in six years, and had Reserve Champion Carcass twice. The Platt's eventually sold their entire Normande herd to Zane Smith where the herd became a part of his Goose Hill Farm Normande herd (now dispersed) in New York.

Another family active in the show ring was the David and Ann Bolen family of Tama, IA. Dave and Ann got their start with Normandes with the help of Dave's two brothers, Bruce and Ben. Dave had experience showing beef animals while he was growing up and he and Ann provided their four children (Sara, Ashley, Scott, and Amy) the opportunity of showing Normandes from their Normande herd at



**AMY BOLEN & HER HEIFER LILLY**

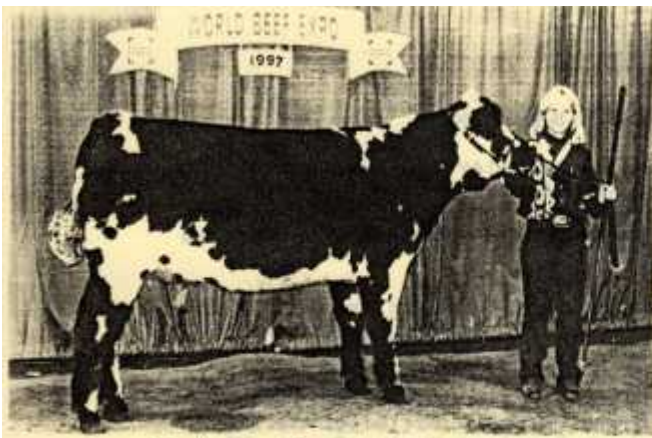
Amy ended up having the superior heifer and was Supreme Champion Heifer at the Tama County Fair that year. Ashley and Scott each showed a Champion TAMACO Steer, this is a steer that is born and raised in Tama County, IA.

The Dave and Ann Bolen family also enjoyed success beyond their Tama County Fair. At the Iowa State Fair, the Bolen's placed second, third, fourth, and sixth in tough Commercial Heifer classes of up to thirty head in a single class. One year Sara showed at the Waterloo Cattle Congress where her Normande heifer was selected as Reserve Champion Heifer while beating the Grand



**ASHLEY BOLEN & HER STEER BABY HUEY**





Amy Bolen - Grand Champion



Elizabeth Radel - Reserve Champion



Youth Exhibitors Preparing for the Show



Wes Bolen - Electric Heifer



Beef Information Display

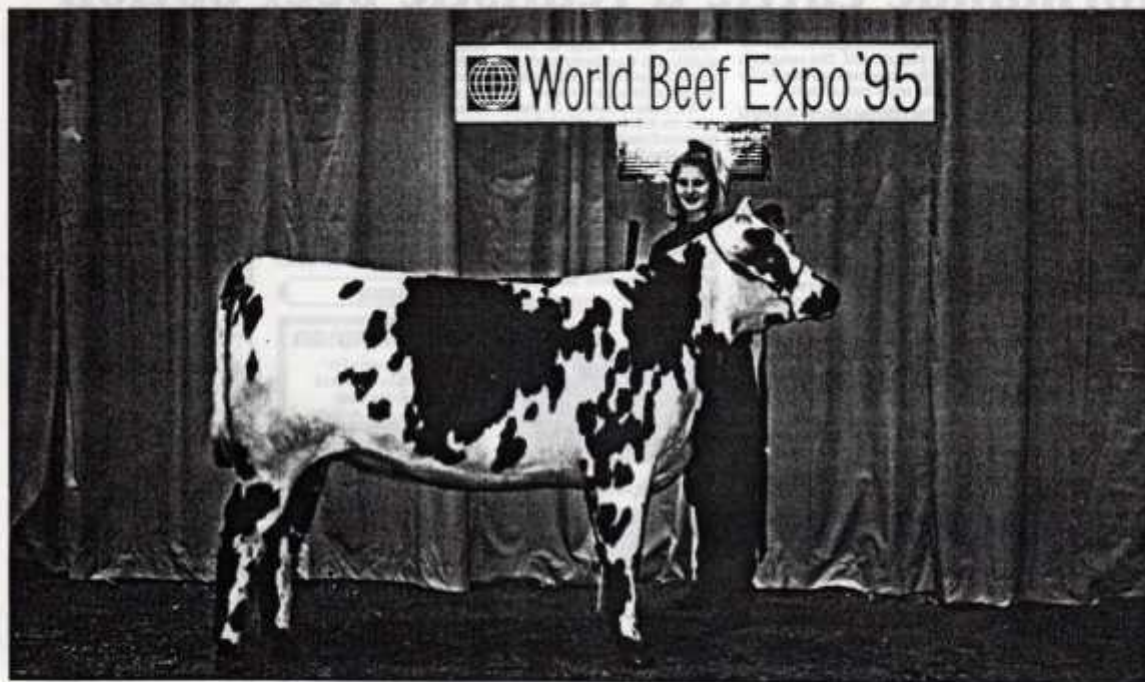
Champion Commercial Heifer from the Iowa State Fair. At the World Beef Expo, Sara showed the Champion Normande Heifer four different years. And Amy showed the Champion Normande Heifer one year. The showing successes the Bolen family experienced were a result of the quality of their Normandes, and the hard work, attention to detail, and perseverance of Sara, Ashley, Scott, and Amy.

As noted near the beginning of this article, there were many individual breeders and their families who exhibited their Normandes at local fairs and county fairs. Unfortunately NANA does not have a very extensive record or reports of those breeders and their families. What we have been able to find is the next four

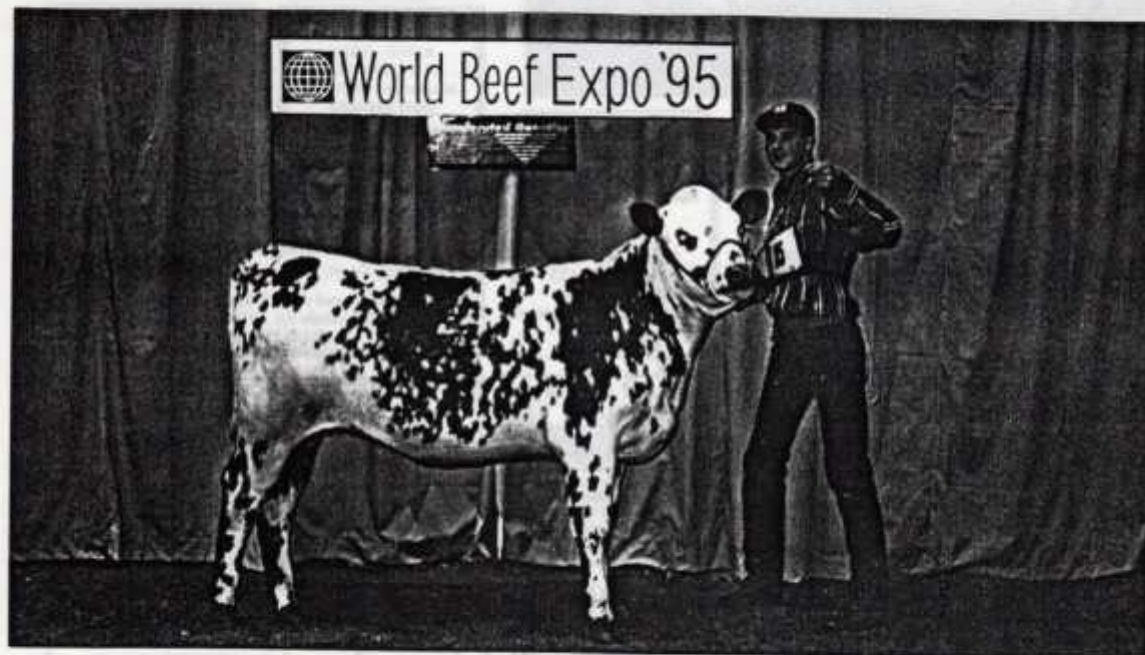


## NORMANDE

### WINNERS AT THE 1995 WORLD BEEF EXPO



The Grand Champion Normande Female was a 75% Normande Junior yearling shown by Sara Bolen, Tama, IA. This February calf was a SGF BJ'S IRONMAN daughter out of a DBN 6 BEN'S SCOOTER cow.



The Reserve Champion Normande Female was a fullblood Junior yearling shown by Kevin Toivola, Hibbing, MN. This February calf was a FCCC Casler USA daughter out of a Lambix cow.



GRAND CHAMPION NORMANDE FEMALE  
SHOWN BY SARA BOLEN, TAMA, IA



# World Beef Expo

October 10-12, 1996  
Dane County Expo Center  
Madison, Wisconsin USA



RESERVE CHAMPION NORMANDE FEMALE  
SHOWN BY ASHLEY BOLEN, TAMA, IA



## HIGHLIGHTS OF YOUTH AND NORMANDES IN 1994

### ROW 1

KEVIN TOIVOLA of Hibbing, Minnesota, is shown with the 4-H Grand Champion Other Breeds Cow-Calf at the Minnesota State Fair. This cow-calf pair were also 4-H winners at the St Louis County Fair in Hibbing, MN. Kevin also showed a fall calf and a Jr yearling the the County Fair. He showed a Jr yearling at the Normande Heifer show at the World Beef Expo.

JACOB SMITH of Iron City, Tennessee, is shown with a 17 month old fullblood helper. Jake is a Junior Member and has 2 Normande helpers to start his herd.

### ROW 2

KATIE PETERSEN of Oxford Junction, Iowa, is shown with her purebred helper. She showed this heifer at the World Beef Expo and at her local county fair.

CALEB PETERSEN of Oxford Junction, Iowa, is shown with his Normande helper. Caleb showed this heifer at the World Beef Expo and at his local county fair.

SARA BOLEN of Tama, Iowa, is shown with the Grand Champion Normande helper from the World Beef Expo Jr show. This fullblood helper also won her class at the Tama County Fair and took 5th place in a commercial class of 20 head at the Iowa State Fair. Sara also showed a cow-calf pair that was Grand Champion 2 yr old cow and overall Champion at the Tama County Fair. Sara also had the Reserve Champion Supreme helper with a 3/8 Normande, 3/8 Maine-Anjou helper at the county fair.

### ROW 3

JACOB PETERSEN of Oxford Junction, Iowa, is shown with his 3/4 Normande helper. Jacob showed at the World Beef Expo and at his local county fair.

KASEY RYSDAM of Elgin, Oregon, is shown with her Normande FFA steer. She showed at the Union County Stock show in Union, Oregon.

TERRY TOIVOLA of Hibbing, Minnesota, is shown with his Sr Yearling, who was Reserve Champion at the World Beef Expo and received a purple ribbon at the Minnesota State Fair Other Breeds 4-H show. Terry showed two Jr yearling's at the World Beef Expo and one at the St Louis County Fair. He also had a cow-calf pair at the county fair.

### ROW 4

ASHLEY BOLEN of Tama, Iowa, is shown with her purebred helper. She won her commercial class of 10 head at the Tama County Fair.

CURTIS SPIERING, RON SPIERING and MARK SPIERING of Mt Iron, Minnesota, are shown together with their purebred Jr yearlings at the St Louis County Fair. Curtis had the over-all Champion 4-H helper and Ron had the Reserve Champion at the county fair. Curtis and Ron also showed both their heifers at the Minnesota State Fair Other Breeds 4-H show with Curtis receiving a blue ribbon. Mark showed a Jr yearling at the World Beef Expo and also had a cow-calf pair that he showed at the county fair and the Minnesota State Fair Other Breeds 4-H show.

TY PLATT of Heron, Montana, is shown with this parents, Richard and Donna Platt and Ty's fullblood 5 month old bull calf. This calf was Reserve Champion at the Sanders County Fair in Plains, Montana. Ty also won the Top Breeder award with the female Normandes he showed at this fair. Ty's steer placed 5th at the live show and won the carcass Championship on the rail. Ty also showed animals at the Western Montana Fair at Missoula, Montana.







## NORMANDES IN COLOR 1995

### ROW 1:

BETH SWAFFORD of Diamond S Normande, Athens, TN is shown with her purebred heifer DVM ENCHANTED STAR 721D. This heifer was Grand Champion Other Breeds at the McMinn County Jr Livestock Expo in July 1995. She placed 6th out of 27 at the Tennessee Jr Livestock Expo in July. In September this heifer was Grand Champion All Other Breeds at the Mid East TN Fair, showing against Red Angus, Chianina and Chiangus. Another purebred Normande heifer from Diamond S Normande was shown in this same class and placed 3rd with a large black Chiangus heifer between the 2 Normandes. A lot of interest was generated with these two tri-colored heifers beating several traditional black heifers.

ASHLEY BOLEN, Tama, IA is shown with her purebred Normande heifer SBN CALVADOS'S KATARINA 3D. This heifer was 3rd in her class at the World Beef Expo and second in her class at the Tama County Fair.

### ROW 2:

TERRY TOIVOLA, Spruce Grove Farm, Hibbing, MN is shown with his Grand Champion Normande cow-calf pair. This pair was the Grand Champion in the 4-H and Open class at the St. Louis County Fair. The cow SGF BUCCANEER'S VELVET was the Over-all Grand Champion female at this fair. This eye catching pair were Grand Champion Other Breeds Cow-Calf at the Minnesota State Fair 4-H show. This is the 3rd time this cow and her calves have won this show. She was also shown as a heifer at the 1989 Minnesota State Fair 4-H show and was Reserve Champion Other Breeds Heifer.

SARA BOLEN, Tama, IA is shown with her heifer SBN IRONMAN'S IZZY 2D. This heifer was Grand Champion Normande heifer at the World Beef Exp. She was the Reserve Champion Commercial and Reserve Champion Supreme heifer at the Tama County fair. She placed 3rd in a tough class of 25 commercial heifers at the Iowa State Fair. In the Bloomfield Iowa Fair's All Other Breeds class, she placed 2nd with the Judge commenting that she was the cleanest front-end heifer of the 100 heifers at the show.

### ROW 3:

KEVIN TOIVOLA, Hibbing, MN is shown with his fullblood Normande heifer SGF MISS CASIER USA 162D. This heifer was the Reserve Champion heifer at the World Beef Expo and was a purple ribbon winner at the Minnesota State Fair 4-H Other Breeds Junior Yearling show.

TERRY TOIVOLA, Hibbing, MN also showed this Spruce Grove Wrangler Normande steer at the World Beef Expo, the St Louis County Fair and had him in the Normande display at the Minnesota State Fair.

### ROW 4:

This is a picture of seven CALVADOS fullblood embryo calves at JC HOLT'S farm Sheffield, AL. The mother of these calves is VBJR MISS HIGH TIME and is the fifth animal from the left in this picture.

ASHLEY BOLEN, Tama, IA is also shown with her fullblood Normande steer BBN BABY HUEY 5D. This Casier USA steer placed 3rd in a strong Other Breeds class at the World Beef Expo. The winner of this class was the overall champion steer at the World Beef Expo. This steer was also Champion Tama County Raised Steer.







# Normande Genetics

Your source for imported French semen and embryos

---

**Check our new website:** we just redid it. It has more information on the breed and the indexes of our bulls. It's still a work in progress, but little by little we hope to improve it for your benefit: [normandegenetics.com](http://normandegenetics.com)

If your operation is a dairy, check our catalog page and see the latest proofs. We have 20 bulls available, and more to come later in the year, including sexed semen.

If you have a beef operation, you may want to consider using our bulls with positive numbers for muscularity, body condition and beef value composite. All three numbers indicate good beef ability: muscularity refers to cull cows values, while beef value composite relates to steers and veal values.

One good illustration of the dual purpose qualities of the Normande breed is **Jefroid**. He now has 27 daughters, and his numbers are firming up: +1.5 muscularity, +1.1 body condition, +0.8 beef value, BB Kappa Casein, A2A2 Beta Casein. His dam Gelée produced 22,000 lbs in second lactation without losing any body condition.



Jefroid

Other bulls with good beef value indexes are Ibernatus, Icarius, Infinity, Jesse, Gibraltar, Lacanau, Lamier, Lapousnoz, Medellin, Monza, Nesthy, Niville.



Gelée, Jefroid's Dam

---

**New: Double-muscle Normande** bulls: some Normandes carry the double-muscle gene and a small nucleus has developed in France. No dairy bull ever carries the gene, but we are pleased to offer the first two fullblood homozygous double-muscle Normande bulls in the US: Devron and Augeron. Please call us for information and see pictures below.



Devron



Augeron



**Normande Genetics** has been the main provider of French Normande genetics since 1997. We import **semen and embryos** from France, and we ship all across the U.S.

For more information, call **612 823 7212** or check our website: [www.normandegenetics.com](http://www.normandegenetics.com), email: [jerome@normandegenetics.com](mailto:jerome@normandegenetics.com)

Follow us on  facebook &  twitter for our quick updates



## **JOHN OSINGA FEATURED YOUTH BY** **DAIRY STAR MAGAZINE**

John Osinga, son of Gregory and Sarah Osinga of Janesville, WI, recently graduated from Rock County Christian School and is planning on attending College of the Ozarks in Point Lookout, MO. John is a junior member of NANA and along with his family has shown at NANA's National Show. On their farm they milk around 20 cows, have other livestock, and their prefix is Rosewood. Recently John was featured by the Dairy Star Newspaper out of Sauk Centre, MN.

Normande Happenings had asked Dairy Star Magazine for permission to print their feature piece on John, but they were not willing to grant us permission. So we are unable to provide the Normande community the verbatim text of their piece on John. Instead we are giving you a summarization of their feature on John.

John became a member of 4-H when he was old enough and over the years he focused on showing dairy animals at the Rock County Fair because it was something he enjoyed doing. He also stepped out of his comfort zone in the recent past and began showing sheep as a 4-H project. It was a learning experience for him and he enjoyed receiving the advice and knowledge his 4-H club's sheep project leader provided him.

In 2017 John brought his Normande yearling heifer, Rudan Undun Holly 697, to the NANA National Show. The heifer had been purchased from the Vosbergs of Vosberg Valley View Farm Inc. near South Wayne, WI. Holly turned out to be a good investment as she was chosen as the Reserve Champion Junior Dairy Female that year, and then in 2019 she was selected as the Grand Champion Dairy Cow of the 2019 NANA National Show.

John's responsibilities on their farm includes being the primary evening milker for their 21 milk cows. He also assists with cleaning the barn for milking, and feeding the cows. Part of cleaning the barn for milking includes scraping the gutters so the milking area is clean. Plus he takes care of his family's pigs and chickens.

When asked who he looked up to the most, John's response was "My Dad." John went on to point out that his dad has a constant passion for God and for dairy farming. He also pointed out that no matter how bad the farm situation was for their family, his dad always trusted God to make things better in the days ahead.

Once John completes his college education in the fields of animal science and agribusiness, he then hopes to work in the Dairy Grazing Apprenticeship program.

After reading the entire article about John, one is left with the impression he will make a difference in the lives of those who may come within his circle of influence. In response to the question: If you could change one thing in the world, what would it be and how would you change it? John replied, "I would want the world to be a place where you can respect people with other opinions and yet be able to tell them if they are wrong or not. Also, the world walking away from Christian values has led to the moral decay we see in society. If I love my fellow man in a humble and Christ-like attitude, I can change the world for the better."



**FOR SALE**

NANA HAS A LIMITED SUPPLY OF SEMEN AVAILABLE FROM THIS  
FRENCH BULL

**JACARANDA (non-sexed)**

\$5.00/UNIT

MINIMUM ORDER OF 5 UNITS  
YOU PAY SHIPPING

NORTH AMERICAN NORMANDE ASSOCIATION  
608-943-6091 800-573-6254  
nana@yousq.net

**NANA REGISTRATION, TRANSFER & MEMBERSHIP FEES**

ANNUAL ACTIVE MEMBERSHIP	\$40.00
ANNUAL ASSOCIATE MEMBERSHIP (NON-VOTING)	20.00
ANNUAL JUNIOR MEMBERSHIP	10.00
REGISTRATION AT 0-6 MONTHS OF AGE	10.00
REGISTRATION AT 7-12 MONTHS OF AGE	15.00
REGISTRATION AT 13-24 MONTHS OF AGE	20.00
REGISTRATION OVER 24 MONTHS OF AGE	100.00
*NON-MEMBER REGISTRATION FEES ARE DOUBLE THE ABOVE	
TRANSFER WITHIN 60 DAYS OF SALE	10.00
TRANSFER AFTER 60 DAYS OF SALE	15.00

**2019  
YEAR  
CODE  
G**


**2019 DAIRY FACTS FROM THE USDA**

**\*218 BILLION POUNDS OF MILK PRODUCED**  
**\*9.34 MILLION DAIRY COWS**  
**\*NUMBER OF LICENSED DAIRY FARMS: 34,187**  
**\*AVERAGE NUMBER COWS PER DAIRY: 234**  
**\*AVERAGE PRODUCTION PER COW PER YEAR: 23,400 LBS.**  
**\*TOP FIVE DAIRY STATES BY COW NUMBERS: CA-1.7 MILLION, WI-1.26 MILLION; ID-635,000; NY-626,000; TX-578,000**  
**\*TOP FIVE STATES BY LICENSED DAIRY FARM NUMBERS: WI-9,090; PA-6,570; NY-4,490; MN-3,210; CA-1,390**  
**\*TOP FIVE STATES FOR TOTAL POUNDS MILK PRODUCED: CA-40.5 BILLION; WI-30.6 BILLION; ID-15.6 BILLION; NY-15.1 BILLION; TX-13.8 BILLION**  
**\*TOP FIVE CHEESE PRODUCING STATES: WI-2.8 BILLION #: CA-2.3 BILLION #: ID-.87 BILLION #: NY-.76 BILLION #: NM-.66 BILLION #**  
**\*IT TAKES 12 POUNDS OF MILK TO PRODUCE 1 GALLON OF ICE CREAM**  
**\*AMERICANS CONSUME ON THE AVERAGE 48 PINTS ICE CREAM PER YEAR**  
**\*BREEDS OFFICIALLY RECOGNIZED AS DAIRY BREEDS BY THE PUREBRED DAIRY CATTLE ASSOCIATION (PDCA): HOLSTEIN, BROWN SWISS, GUERNSEY, JERSEY, AYRSHIRE, MILKING SHORTHORN, RED & WHITE HOLSTEIN. NOT RECOGNIZED AS DAIRY BREEDS ARE DUAL PURPOSE BREEDS AND ANY COMBINATION OF CROSS BREEDS.**

## CLASSIFIEDS



**Circle D Farm**  
Wayne & Lisa Dewey  
14798 JJ Avenue  
Iowa Falls, IA 50126  
641-648-5597 or 641-373-0413  
wddewey61@gmail.com  
  
Normande Cattle for Sale



**RIVER VIEW RANCH**  
**PUREBRED POLLED NORMANDES**  
  
ROBERT & DIANNA LANGE  
7615 HWY 55  
KIMBALL, MN 55353  
320-398-8633

### NORMANDE GENETIC SPECIALTIES

- \*The ultimate in "Grade and Yield Balancer Bulls"
- \*Polled Fullblood Genetics
- \*Calving ease sires
- \*Black polled purebred bulls

"The Normande breed has a level of consistent quality grade and yield grade balance that crossbred 'Balancer Bulls' seldom deliver."



218-262-3981  
SEMEN  
&  
EMBRYOS

**BRIAN TOIVOLA**  
NGS President  
11544 Spudville Rd.  
Hibbing, MN 55746

### **DATES TO REMEMBER**

- \*?????-YOUR SPOUSE'S BIRTHDAY
- \*?????-YOUR ANNIVERSARY
- \*DUE TO THE COVID-19 PANDEMIC THE 2020 WISCONSIN FARM TECHNOLOGY DAYS HAS BEEN CANCELLED
- \*SEPTEMBER 18, 2020: ANNUAL NANA MEMBERSHIP MEETING, MINERAL POINT, WI
- \*SEPTEMBER 19, 2020: NANA SHOW, MINERAL POINT, WI
- \*SEPTEMBER 25-27, 2020; WORLD BEEF EXPO, MILWAUKEE, WI
- \*SEPTEMBER 29-OCTOBER 3, 2020: WORLD DAIRY EXPO, MADISON, WI
- \*NOVEMBER 26, 2020: THANKSGIVING
- \*DECEMBER 1, 2020: PHOTOS DUE FOR 2021 NANA CALENDAR
- \*DECEMBER 25, 2020: CHRISTMAS



### THE COVER

Pictured on the cover of this issue of Normande Happenings is BBN B.J.'S BARBRA and her owner, Sara Bolen, of Tama, IA. In 1993 Sara showed Barbra at a number of beef shows and Barbra was chosen as the Iowa Winter Beef Expo Grand Champion Normande heifer, World Beef Expo Grand Champion Normande heifer, Iowa Summer Beef Expo Grand Champion, Reserve Champion Supreme heifer Tama County Fair, and Reserve Champion Commercial heifer National Cattle Congress.

The NANA office is looking for eye catching and attractive pictures of Normande cattle to use on the cover of future issues of "Normande Happenings". Please submit your picture(s) to the NANA office and if the editorial advisory board (my family) should choose your picture it will be on the cover of a "Normande Happenings".

THANK YOU!

**NORMANDE HAPPENINGS** is the official newsletter of the North American Normande Association published by the Association office four times per year. Active, associate and junior NANA members receive the newsletter as part of their dues. Non-members may subscribe for a cost of \$15.00/year.

Editor: Michael Mueller

Publisher: North American Normande Association

748 Enloe Rd.

Rewey, WI 53580

608-943-6091

800-573-6254

VISIT NANA'S WEBSITE:

[www.normandeassociation.com](http://www.normandeassociation.com)



### CIRCLE D HAWK TANK

NANA WAS RECENTLY GIFTED SEMEN FROM THIS NORMANDE BEEF SIRE. "TANK" IS BLACK HIEDED AND HIS CALVES ARE OFTEN BLACK HIEDED. HE IS DEFINITELY A CALVING EASE SIRE WITH BIRTH WEIGHTS IN THE 70 POUND RANGE.

\$10.00/UNIT

5 UNIT MINIMUM ORDER

YOU PAY SHIPPING

**NORTH AMERICAN NORMANDE ASSOCIATION**

608-943-6091 800-573-6254

nana@yousq.net

### ADVERTISING RATES

BUSINESS CARD SIZE: \$10.00/ISSUE OR \$30.00/YEAR

ONE-QUARTER PAGE: \$25.00/ISSUE OR \$80.00/YEAR

ONE-HALF PAGE: \$40.00/ISSUE OR \$120.00/YEAR

FULL PAGE: \$50.00/ISSUE OR \$150.00/YEAR

\*\*\*WANTED ADS ARE FREE.

\*\*\*NO EXTRA COST FOR PHOTOS IN ADS





## ***PDM Normandes***

**Paul and DeLores Moechnig**

64841 310th Ave  
Lake City, MN 55041

Phone: 651-345-4372  
Email: pdmoechnig@embarqmail.com

**Normande cattle  
for sale**



**Jeff Bock**

W. 831-870th Ave, Spring Valley, WI 54767

715-425-0237 • jeffgbock@gmail.com

**"Seedstock & Project Calves For Sale"**



**Vosberg Valley View Farm Inc.**

**Dan, Ruth, and Jared Vosberg**

**Sarah & Derek Vosberg**

2295 Cisserville Road

South Wayne, WI 53587

608-214-2295

608-214-2296

drvosberg@wekz.net

**Embryos, bulls, and females available**

**-Full Blood**

**-High percentage**

**-A2A2 options**

## **MORE DAIRY TRIVIA**

\*IN 1950 THE AVERAGE DAIRY COW PRODUCED 5,314 POUNDS MILK PER YEAR. THE AVERAGE PRODUCTION PER COW PER YEAR IN 2019 WAS 23,400 POUNDS.

\*IN 1950 THE RATION FOR MOST DAIRY COWS WAS PRIMARILY GRASS PASTURE DURING THE SUMMER, DRY HAY AND SOME VARIETY OF ENSELED FORAGE (IF THE FARM HAD SOME FORM OF SILO) DURING THE NON GROWING SEASON. TODAY DAIRY COW RATIONS STILL INCLUDES PASTURE ON SOMEDAIRY FARMS. HOWEVER A GOOD MAJORITY OF DAIRY FARMERS UTILIZE TOTAL MIXED RATIONS CONSISTING OF ANY OF THE FOLLOWING FEED INGREDIENTS: CORN SILAGE, WINTER RYE SILAGE, HAYLAGE, BAILAGE, DRY GRASS/CLOVER/ALFALFA HAY, WHEAT STRAW, TRITICALE SILAGE, HIGH MOISTURE SHELLED CORN, GROUND DRY SHELLED CORN, GROUND DRY EAR CORN, WET BREWERS GRAINS, DRY DISTILLERS GRAINS, COTTONSEED, PELLETED OAT HULLS, PELLETED SOYBEAN HULLS, ROASTED SOYBEANS, PELLETED WHEAT MIDS, CORN GLUTEN MEAL, SOYBEAN MEAL, BEET PULP, DRIED BREWERS GRAINS,

## **2020 NANA NATIONAL SHOW**

AS THIS ISSUE OF NORMANDE HAPPENINGS IS BEING PRINTED AND SENT OUT, THE 2020 NATIONAL NORMANDE SHOW IS STILL ON SCHEDULE FOR SEPT. 18-19, 2020. THE WORLD DAIRY EXPO WILL ANNOUNCE ON JULY 1, 2020, IF THE 2020 EDITION OF WORLD DAIRY EXPO WILL BE HELD OR CANCELLED. ONCE THEIR DECISION IS MADE PUBLIC, THE NANA BOARD OF DIRECTORS WILL MAKE THEIR DECISION WHETHER OR NOT TO CANCEL THE NANA SHOW OR TO GO AHEAD AS SCHEDULED.