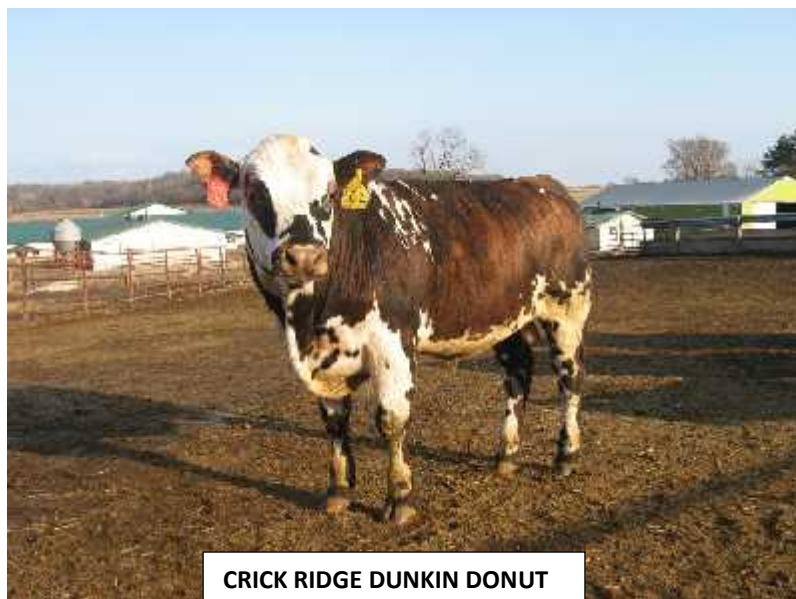


## ST. CROIX VALLEY BULL TEST AND SALE

The St. Croix Valley Bull Test has been completed and three Normande bulls will be sold at public auction at the Mann Valley UW Research Farm near River Falls, WI on April 15, 2017. Jeff and Nona Bock (Crick Ridge Farm) of River Falls, WI and Wayne and Lisa Dewey (Circle D Farm) of Iowa Falls, IA entered bulls from each of their herds.

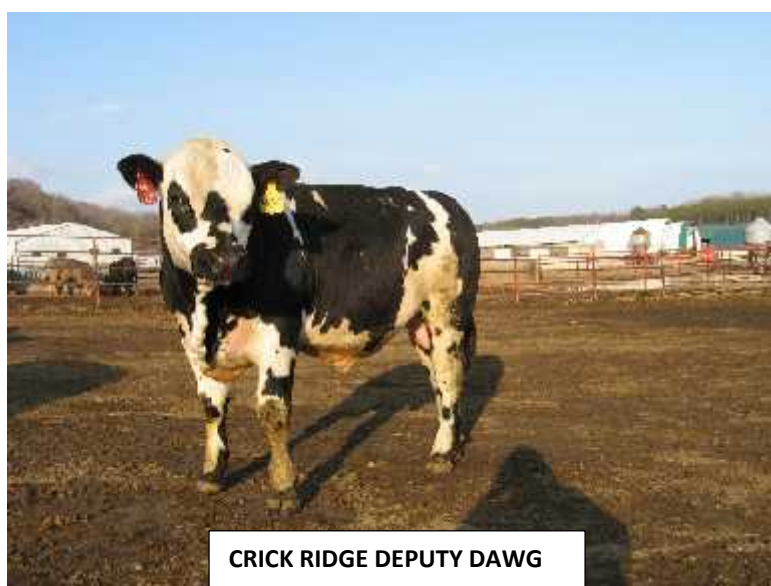


**CRICK RIDGE DUNKIN DONUT**

The Bocks have two bulls in the sale and both bulls are sired by Circle D Foolerman Zoland. Zoland was the top performing Normande bull in the 2013 SCVBT with a 3.29 pounds per day weight gain. And he was the top selling bull of the entire sale. **Crick Ridge Dunkin Donut**, 93% Normande, was born 04-08-16 and weighed 86 pounds at birth. His 205 day adjusted weaning weight was 689 pounds. His dam is a daughter of SGF Polled Rocket 79XH, Polled Rocket's sire was SGF Casier Rocky F4XD. Dunkin Donut's maternal grand dam's sire was Sun

Thump Legacy 70L. He began the bull test at a weight of 748 pounds and ended the test weighing 1093 pounds. His average rate of daily gain was 3.07 pounds, making him second among the Normandes in average daily gain. Jeff Bock prepared these comments for Dunkin Donut to be put in the sale catalog: "With the Zoland genetics added into the mix, Donut has a lot to pass on to his offspring. He is another 3M bull prospect. If you're looking for meat, muscle, and milk, look no further."

The Bock's second bull, **Crick Ridge Deputy Dawg**, 94% Normande, was also born on 04-08-16 with a birth weight of 86 pounds. His 205 day adjusted weaning weight was 658 pounds. His dam is a daughter of Crick Ridge Visanti 6V. Visanti was sired by SNF Jackson 902J. Deputy Dawg's maternal grand dam was sired by SGF Polled Rocket 79XH. He entered the bull test at a weight of 730 pounds and finished the test weighing 1073 pounds. His average daily rate of gain was 3.03 pounds. The comments Bock



**CRICK RIDGE DEPUTY DAWG**

prepared for the sale catalog are: “His maternal grandsire is Visante, great grandsire is Jackson. Jackson is a well known sire in the Normande Breed. I see the Jackson genetics in him. Not many words needed. His overall stature explains everything. No doubt he is a 3M bull prospect. You want meat, muscle, milk in your calf crop he will deliver the 3 M’s with style to boot.”



**CIRCLE D IMPACT DEMAND 7D**

Wayne and Lisa Dewey’s bull, **Circle D Impact Demand 7D**, was the top performing Normande bull with an average daily rate of gain of 3.71 pounds. Born on 04-08-16, he weighed 94 pounds. He is a son of Circle D Rocket Impact 622P who traces back to SGF Casier Rocky F4XD and SGF JB’s Ebony 79X via SGF Polled Rocket 79XH. Demand’s dam is a daughter of Circle D Knight Hawk 42P. He began the test weighing 588 pounds and his final test weight was 1008 pounds. Demand is a maternal brother to Circle D Foolerman Zoland. Comments from Wayne Dewey for the sale catalog are: “This bull is a powerful

performance bull. Demand is an excellent carcass bull and will make a great herd bull for any operation. His dam is a powerful cow with great structure and udder quality at 10 years old.”

Catalogs for the April 15, 2017 sale can be obtained from Sandy Drinkman (715-265-4374). The sale begins at 12:00 pm and will be held on the UWRF Mann Valley Farm, at 1295 Glover Rd, River Falls, WI. The auction can be viewed live via DVAuction Online at <https://dvauction.com>. Videos of the sale bulls can be seen at <https://www.youtube.com/user/SCVBT>.

---

## **HOOVES AND BOOTS AWARD**



A young lad by the name of Elijah Dibble was one of those kids who had a very special touch and bond with animals. For Elijah, it was his registered Normande cow named Cinnamon. Cinnamon was one of those animals that needed a special caretaker and Elijah was the one. It was when Elijah was working with her that Cinnamon felt at ease and the two of them got along very well when others had issues working with Cinnamon. PMC Captan **Cinnamon 23W** became Elijah’s registered Normande cow and 4-H project.

On November 4, 2013, Elijah died in a tragic bicycle vs. car accident in front of his home. Elijah's death was nearly unbearable for Richard and Caroline Dibble and their other children, Emily, Abraham, Joseph, Ruth, and Uriah (born hours after Elijah died). As they did their daily chores, including caring for Elijah's cow Cinnamon, they were reminded daily of their loss of Elijah. Wanting to honor and remember Elijah, the Dibble family started a Normande heifer giveaway program for their area of the country similar to NANA's Youth Heifer Program. They named their program the "Hooves and Boots Award."



DYLAN DYN & SNOWFLAKE

This is the third year for the "Hooves and Boots Award" heifer program. In 2015 Dylan Dyn of Jordanville, NY, was awarded HHA MR Payday Snowflake, a daughter of SGF MR Payday 25tk and PMC Captan Clove 17W. And in 2016 Jonas Maes of Holland Patent, NY, was awarded HHA Uno Cinnamon Cassia, a daughter of New Hope Saintyorre Uno-ET and Elijah's cow, PMC Captan Cinnamon 23W. It is now time for 4-H and FFA youth in the state of New York area to submit their entries for this program by May 1, 2017. Complete information and rules about the Dibble

program can be seen at [www.hoovesandboots.org](http://www.hoovesandboots.org). You will find an application you can download at the website as well. **The deadline for submitting your application to the Dibble family is May 1, 2017.**

The winner will be announced May 15, 2017. In the essay there are a number of questions that need to be answered but the essay does not need to be a literary masterpiece. The recipient of the heifer is expected to show their heifer at the Farmer's Museum Junior Livestock Show held at the Iroquois Farm Showgrounds in Cooperstown, NY, and their county fair for two years.



JONAS MAES

If you know of a young person who would be interested in the Hooves and Boots Program please pass this information on to them. NANA encourages youth in the New York area to participate in this unique award

program. After you have completed your essay and entry form mail it to: **Hooves and Boots, c/o Fr. Rich Dibble, 10265 US Highway 20, West Winfield, NY 13491**. Only hardcopy applications sent by regular mail will be accepted but questions or comments can be emailed to: [diakonio@windstream.net](mailto:diakonio@windstream.net), or phone inquiries can be made at 315-725-3745.

---

### SOME CORNY FACTS FROM THE NATIONAL CORN GROWERS ASSOCIATION

\*IN 1912 THE AVERAGE YIELD PER ACRE WAS 20 BUSHELS, IN 2016 IT WAS 175 BUSHELS PER ACRE.

\*ONE BUSHEL OF SHELLED CORN (56 POUNDS) CAN PROVIDE ONE OF THE FOLLOWING FOUR: 31.5 POUNDS OF STARCH; OR 22.5 POUNDS POLYLACTIC ACID POLYMERS USED FOR FIBERS AND PLASTICCS; OR 33 POUNDS OF CORN SWEETENER; OR 2.8 GALLONS OF ETHANOL, PLUS 17.5 POUNDS OF DRIED DISTILLERS GRAINS, 13.5 POUNDS OF GLUTEN FEED, 2.6 POUNDS OF GLUTEN MEAL, AND 1.5 POUNDS OF CORN OIL.

\*IN 2016 94.0 MILLION ACRES OF CORN WERE PLANTED, 86.7 MILLION ACRES WERE HARVESTED, 15.1 BILLION BUSHELS WERE PRODUCED, AND THE AVERAGE PRICE PER BUSHEL WAS \$3.40.

\*A KERNEL OF CORN CONSISTS OF 3.8% CORN OIL, 15% MOISTURE, 19.2% PROTEIN & FIBER, AND 62% STARCH.

\*IN 1986, 109 MILLION BUSHELS OF CORN WAS USED FOR CEREAL AND FOOD. IN 2016, 205 MILLION BUSHELS WERE USED FOR CEREAL AND FOOD.

# Normande Genetics

Your source for imported French semen and embryos

## Jefroid

### *Dual purpose excellence!*

+1 for muscularity, 1762M, 13P, .00F, 90 calving ease, +1.3 feet & legs, +.6 udder, BB Kappa Casein, A2A2 Beta Casein

**This bull has it all:** muscle, milk, components, type, calving ease. His dam Gelée produced 22,000 lbs in her second lactation without losing any body condition. He's a must for any Normande breeder interested in the low input/high added value qualities of the breed.



Jefroid



Gelée, Jefroid's dam

**Call us now for spring orders**

More bulls featured on our website. Sexed semen and embryos available.

For dual-purpose qualities, also check Uvray, Ulozon, Caramba, Camembert, Jesse, Infinity, Jorino, Lancaster.



Normande Genetics has been the main provider of French Normande genetics for the past 20 years. We import **semen and embryos** from France, and we ship all across the U.S.

For more information, call **612 823 7212** or check our website: [www.normandegenetics.com](http://www.normandegenetics.com), email: [jerome@normandegenetics.com](mailto:jerome@normandegenetics.com)

Follow us on  facebook &  twitter for our quick updates

## 2016 ANNUAL MEMBERSHIP MEETING REPORT

### NANA 2016 ANNUAL REPORT

ACTIVE ADULT MEMBERS:	50
ACTIVE JUNIOR MEMBERS:	4
ASSOCIATE MEMBERS:	2
NUMBER OF ANIMALS REGISTERED	274 (Previous year-195) (44 Males-previous year 34) (230 Females-previous year 161) (36 Halfbloods-previous year 34) (211 Percentage-previous year 143) (29 Full bloods-previous year 22)
NUMBER OF ANIMALS TRANSFERRED:	43 (Previous year-78)

### NANA 2016 FINANCIAL REPORT

NANA RESERVE ACCOUNT (SAVINGS) (09-28-16):	\$ 526.34
NANA GENERAL FUNDS (CHECKING) (09-28-16):	1,125.08
NORMAND-E-GENETIC SOLUTIONS (09-28-16):	2,905.08
	-----
CURRENT TOTAL FUNDS ON HAND (09-28-16):	\$ 4,556.42

#### INCOME (09-15-15 THRU 09-28-16)

Hats	\$ 55.00
Newsletter Subscriptions	45.00
Donations	520.00
Dues	2,020.00
Calendars/Ads	555.00
Registrations/Transfers	3,005.00
Shirts	500.00
Silent Auction Items	135.00
Miscellaneous	30.00
Annual Meeting Meal Tickets	260.00
	-----
TOTAL	\$ 7,125 .00

#### EXPENSES (SAME DATES AS ABOVE)

Rent (Shows) WFTD & WDE	\$1,794.00
National Show	1,399.25
Office supplies	1,348.43

Calendars	237.13
Advertising	75.00
Postage	616.57
Miss.	300.00
Computer Printer	529.94
Annual Meeting Meal	369.25
Wisconsin Cattleman's Ass'n.	100.00
Refunds	265.00
	-----
TOTAL	\$7,034.57

---

## NEW FACES ON NANA BOARD OF DIRECTORS

It has been a while since the elections for members of the NANA Board of Directors has had more candidates than the three positions to be filled each year. Prior to the 2016 Annual Membership Meeting four individuals were nominated for the three board positions. When the mail in ballots and the ballots cast at the Annual Membership Meeting were counted the NANA Board of Directors had a new member. With a one vote margin, Lexa Miller of Mount Horeb, WI was elected to a three year term as a new member to the NANA Board of Directors. Also elected were incumbents Bruce Bolen of Greentop, MO, and Michael Mueller of Rewey, WI.



**BRITTA BOLEN**

Following the Annual Membership Meeting the NANA Board of Directors met and elected the NANA officers. There were no changes in the makeup of the slate of NANA officers. Barbara Wogsland of Scandinavia, WI continues as president, Jeff Bock of River Falls, WI remains as vice-president, Rhonda Tremel-Knebel of Arpin, WI is secretary, and Michael Mueller of Rewey, WI continues as treasurer and registry secretary.

The NANA board also approved Britta Bolen of Greentop, MO, as the new Youth Representative on the Board. Nellie Burch of Whitehall, NY, who has turned 18, served in that capacity until the 2016 Annual Membership Meeting. Britta comes from a long time Normande breeding family. She is the granddaughter of Bruce and Connie Bolen of Cedar Lane Normandes. Britta attends her Kirksville, MO, high school as a junior, and helps out on the Cedar Lane Normande farm when she is not working at her after school job.

---

**A WORD FROM BARB:** Happy Springtime! What an exciting time of the year. With new growth and new births, I can't help but get energized for the upcoming year of NANA activities. I hope you feel the same and find some ways to participate in Normande activities in the next few months. If you have any ideas or suggestions, please be sure to let someone on the NANA board of directors know. We are always looking to add meaningful events for our members. Take care, Barb





Circle D Xandude Diablo - 195 D

**For Sale:** 1 year old bull, excellent calving ease bull with a light birth weight. Great to use on heifers.

He will bring thickness with excellent legs and feet. The females should have tight udders while the bull calves will put those extra pounds.

Call Wayne at 641-648-5597 for more details.  
Circle D Farm - Iowa Falls, Iowa

<https://www.youtube.com/watch?v=QAwghaEixo4&list=PLL8M0BF4bxSPBcaypsh3tTjB1Q3jWoaBf&index=1>

Circle D Levi Conqueror -7C.

**For Sale:** 2 year old bull with French breeding in pedigree out of Moqueur, which is unique to have in the United States.

Conqueror was the Reserved Grand Champion Bull at the National Normande Show in September 2016 and went through the St. Croix Valley Bull Test in River Falls, WI with a ADG of 3.04.

Call Wayne at 641-648-5597 for more details. Circle D Farm - Iowa Falls, Iowa



<https://www.youtube.com/watch?v=dxzM5OysHE8&list=PLL8M0BF4bxSOeruIXgzD9d7WJpuMMJdjL&index=41>

.....

<p><b><u>MORE INFORMATION YOU CAN IMPRESS YOUR FRIENDS WITH</u></b></p> <p><b>*ONE SQUARE FOOT OF TURF GRASS HAS 329,000 MILES OF ROOTS IN IT, ACCORDING TO THE TURFGRASS PRODUCERS ASS'N.</b></p> <p><b>*110 SQUARE FEET OF TURFGRASS PRODUCES ENOUGH OXTGEN FOR TWO PEOPLE FOR ONE DAY.</b></p> <p><b>*A TURFGRASS LAWN IS 15 DEGREES COOLER THAN BARE SOIL AND 30 DEGREES COOLER THAN PAVEMENT.</b></p> <p><b>*LAWNS IN THE UNITED STATES STORE UP 37 BILLION TONS OF CARBON. A LAWN ABSORBS CARBON DIOXIDE AND RELEASES OXYGEN.</b></p> <p><b>*A DENSE LAWN ABSORBS RAINFALL SIX TIMES BETTER THAN A WHEAT FIELD AND FOUR TIMES BETTER THAN A HAY FIELD.</b></p> <p><b>(SOURCES OF ABOVE INFORMATION: TURFGRASS PRODUCERS INTERNATIONAL AND ROCKY MOUNTAIN SOD GROWERS)</b></p>
---

## Semen Specials



NEW HOPE SAINTYORRE UNO-ET



NEW HOPE TELERAMA RILEY-ET

Semen is available from these bulls from New Hope Normandes. The semen has been collected in a CSS approved facility and can be shipped worldwide. All semen is priced at \$10 per unit. Shipping and handling charges are additional and will be determined by Fed Ex shipping rates. Orders placed on Mondays will be delivered to you by Friday of the same week. Call Barb for more information.

1. 49NO 0125 New Hope Saintyorre UNO-ET A0104622

Saintyorre x Madison x Girophare

Super-high milk yield potential from fabulous udders! Tested BB for Kappa casein and A1A2.

2. 49NO 1620 New Hope Primate MONTGOMERY-ET A0104454

Primate x Messenger x Highlander

Medium-sized cattle with good production. Docile, easy to work with family. Full sister made over 22,000 @ 2 yrs. A1A2 test result.

3. 49NO 0135 New Hope Telerama RILEY-ET A0104826

Telerama x Macula x Indiscute

Riley has a very unique outcross pedigree with solid production. From what I see should add more strength and width throughout the body. This family has extremely sturdy feet and legs. Although he looks black in the picture, he is actually a very dark brown brindled bull and will sire fully colored calves if used on red colored cow. Also A1A2

All three bulls are 100% pure Normande, originating from elite French Normande herds. All resulting calves will be eligible to be registered with the North American Normande Association herdbook. Call or email for more information. We can ship to your barn door or to your AI technician's tank.

## NEW HOPE NORMANDES

BARBARA WOGSLAND

11006 Bestul Road

Scandinavia, WI 54977

Email: [kbklewogsland@wildblue.net](mailto:kbklewogsland@wildblue.net) website: [www.newhopenormandes.com](http://www.newhopenormandes.com) 715 572-4289 cell



## AVAILABLE GENETICS

Come and take your pick. Double M Cattle Company, LLC has several young Normande bulls for sale. We obtain performance measurements of the animals in our herd: birth weights, weaning weights, yearling weights and carcass information. This all takes time and is an expense but we believe it is worth it to improve our own herd genetics and the Normande breed. We also utilize selective artificial insemination to introduce new genetics into our herd. And over the past 25 years we have purchased and added to our herd sire battery eleven performance measured bulls from the Minnesota Beef Cattle Improvement Association Bull Test and the St. Croix Valley Bull Test. The young bulls we have available were selected for their performance, their pedigree and their phenotype. They were born from 05-11-16 to 06-20-16. Their average birth weight was 85 pounds. They were weaned on 11-01-16 and their average actual weaning weight was 475 pounds. Two are sired artificially and the remaining are out of the three herd sires that are pictured below.



**DOUBLE M CATTLE COMPANY, LLC**

**MICHAEL & MATTHEW MUELLER**

**748 ENLOE RD, REWEY, WI 53580**

**608-943-6091 608-574-4853 608-642-0443**

[mimueller@yousq.net](mailto:mimueller@yousq.net)

