

NANA NATIONAL SHOW 2015

The 2015 NANA National Show was not as big as some of our past shows have been, but we did have an equal number of beef and dairy animals exhibited this year. Eight exhibitors from two states brought 52 Normandes for exhibition. Exhibiting their Normandes were Jeff and Nona Bock of River Falls, WI; Wayne and Lisa Dewey of Iowa Fall, IA; Rhonda Tremel-Knebel of Arpin, WI; Natashsa Kowalchuk of Amherst, WI; Kaden and Korbyn Dewey of Shell Rock, IA; Michael and Matthew Mueller of Rewey, WI; Dan and Ruth Vosberg and family of South Wayne, WI; and Lexa Miller of Mount Horeb, WI.

Amanda Patterson of Bloomington, WI was the judge for the beef show. Jason James of Mineral Point, WI was the judge for the dairy show.



DAIRY FALL BULL CALVES. L-R: HOWLING OAKS MONROE ATARI, HOWLING OAKS ROYAL HOLL MCPATRICK

Beginning the dairy show was the Dairy Fall Bull Calf. Howling Oaks Royal Holl Mcpatrick, a son of Royal Holl was placed first. Standing second in the class was Howling Oaks Monroe Atari, a son of New Hope primate Monroe-ET.

The Dairy Spring Heifer Calf Class had seven heifers exhibited. Placing first was Rudan Royal Holl J 598, a daughter of Royal Holl. Standing second in the class was Rudan Banania Karen 615, a daughter of Banania. And in third place was Rudan Redondo

Sandy 595, a daughter of Redondo. The top three placing heifers were bred and exhibited by Vosberg Valley View Farm, Inc. It was interesting to note all seven heifers were AI sired and six of them were sired by Normande bulls from France.

Topping the Dairy Winter Heifer Calf Class was New Hope Redondo Minnow, a full blood sired by Redondo and bred by Barb Wogsland. Vosberg Valley View Farm, Inc. owns Minnow and they asked Barb Wogsland to lead and show Minnow in the show ring.

In the Dairy Fall Heifer Calf Class, three heifers from Vosberg Valley View Farm, Inc stood one, two, three in the class. Standing in first place was Rudan Banania Juniper



DAIRY SPRING HEIFER CLASS

569, a daughter of Banania. In second place was Rudan Banania Amanda 563, another daughter of Banania. And standing third was Rudan Redondo Cathy 550, a daughter of Redondo.

In the Dairy Summer Yearling Heifer Class Lexa Miller let her presence be known when her heifer, Miller Tyme Desire stood in first place. Desire is sired by the French Normande bull, Alma.

Vosberg Valley View Farm, Inc had the top three heifers in the Dairy Spring Yearling Heifer Class. However, the 2014 Youth Heifer Program heifer, Howling Oaks Uno Leah, sired by New Hope Saintyorre Uno-ET and shown by Natasha Kowalchuk, gave the Vosberg heifers a run for their money. Standing in first place was Rudan Ugo Tac 520, sired by Rudan Telerame Ugo 232-ET. In second place was Rudan UTC A 502, sired by the French bull UTC. And in third place was Rudan Roucoups 483, sired by the French bull Roucoups.



Topping the Dairy Fall Yearling Heifer Class was Miller Tyme Dream, A daughter of Alma, she was exhibited by Lexa Miller.

When it came time for Judge Jason James to select the Junior Champion and Reserve Junior Champion Heifers he chose Rudan Ugo Tac 520, winner of the Dairy Spring Yearling Class, as the Junior Champion Dairy Heifer. James

chose New Hope Redondo Minnow, winner of the Dairy Winter Heifer Calf Class, as the Reserve Junior Champion Dairy Heifer.

Prior to moving to the milking cow classes, the Junior Best Three Females were shown and Vosberg Valley View Farm, Inc took first place with their group made up of the Junior Champion Heifer, the Reserve Champion Junior Heifer and their first place Dairy Fall Heifer Calf.



DAIRY TWO YEAR OLD IN MILK CLASS

In the Dairy Two Year Old in Milk Class, Rudan Ulozon SS Frito 388 stood fist. She is sired by Ulozon. Standing second was Car-Bon Uvray Rhianna 380-ET. Her sire is Uvray. Both cows were exhibited by Vosberg Valley View Farm, Inc.

New Hope Viveco Destiny, sired by Viveco and shown by Lexa Miller, stood first in the Dairy Three Year Old In Milk Class. Standing second was Howling-Oaks Nivea Camembert. She is

sired by Nivea and was shown by Rhonda Treml-Knebel.

Rudan Telerama Christy, a daughter of Telerama and shown by Vosberg Valley View Farm, Inc. topped the Dairy Four Year Old In Milk Class. Second place went to Howling-Oaks M Aurora, a daughter of New Hope Primate Monroe-ET and shown by Rhonda Treml-Knebel.



NEW HOPE VIVECO DESTINY



RUDAN TELERAMA CHRISTY

The Dairy Five Year Old and Older In Milk Class was won by New Hope Redondo Delta-ET. Sired by Redondo, she was exhibited by Lexa Miller.

Rudan Royal Jasmine 233 took the honors in the Dairy Dry Cow Any Age Class. A daughter of Car-Bon Royal Holl Royal-ET, she was exhibited by Vosberg Valley View Farm, Inc.

The results for the dairy group classes were as follows. The Best Three Females Class was won by the Vosberg Valley View Farm, Inc entry. In the Dam and Offspring Class, Rhonda Treml-Knebel's entry of Howling Oaks M Aurora and Howling Oaks Monroe Atari stood first. Standing second was the Vosberg Valley View Farm, Inc. entry of Rudan Royal Jasmine 233 and Rudan Banania Juniper 569. Third place went to Rhonda Treml-Knebel's entry of Howling Oaks Nivea Camembert and Howling



RUDAN ROYAL JASMINE 233

Oaks Riley Callie. And the Produce of Dam Class was won by the entry of Vosberg Valley View Farm, Inc.



Throughout the dairy show judge James had commended the exhibitors for the quality of the animals they had shown in their respective classes. When it came time to select the grand champion and reserve grand champion of the dairy show that quality was very evident. For a second year in a row, Lexa Miller's New Hope Viveco Destiny was named the 2015 Grand Champion of the NANA National Dairy Show. Vosberg Valley View Farm, Inc. had the Reserve Grand Champion with Rudan Telerama Christy.

In the beef show judge Amanda Patterson had the same challenge judge James had in the dairy show. The Beef Junior Bull Calf Class had seven entries so it was split by age into two classes. In the older Beef Junior Bull Calf Class, Circle D Levi Conqueror, a son of SGF Polled Levi 301D, stood first for Wayne and Lisa Dewey. Crick Ridge Chopper, a son of Circle D Zoland shown by Jeff and Nona Bock, stood second. And in third place was Circle D Crick Challenger 91C. He is sired by Crick Ridge Winky 28X and was exhibited by Wayne and Lisa Dewey.

In the younger Beef Junior Bull Calf Class, Crick Ridge Captain Crunch was designated as the winner. He was exhibited by Jeff and Nona Bock and is sired by Circle D Zoland. Standing second was another Zoland son shown by the Bocks, he was Crick Ridge Commanche. Third place went to DMCC Zebulon Calvin 28C. A son of Crick Ridge Zebulon and shown by Double M Cattle Company, LLC.



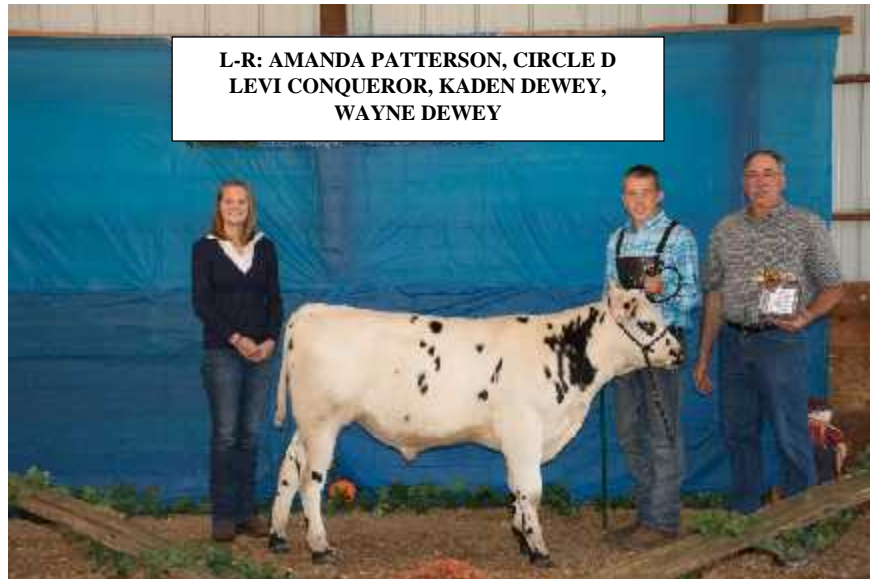
**GRAND CHAMPION BULL-
DMCC SAMACY BOOKER 10B**

The Beef Summer Yearling Bull Class was won by DMCC Samacy Booker 10B, He is a son of Sun Samacy 8LN and was exhibited by Double M Cattle Company, LLC.

When it came time for judge Patterson to select her champion and reserve champion beef bull she designated DMCC Samacy Booker 10B as the champion. This was a repeat for Booker as he had been selected as the 2014 Champion Beef Bull. Selected

as Reserve Champion Beef Bull was Circle D Levi Conqueror, the Beef Junior Bull Calf exhibited by Wayne and Lisa Dewey.

The first female class of the beef show was split into three classes due to the fact there were thirteen heifers entered. The first class of Beef Junior Heifer Calves was dominated by the entries of Wayne and Lisa Dewey. Standing first was Circle D Crick Caleraine 206C. In second place was Circle D Crick Chickadee. And in third place was Circle D Crick Minnie 196C. All three heifers were sired by Crick Ridge Winky 28X.



**L-R: AMANDA PATTERSON, CIRCLE D
LEVI CONQUEROR, KADEN DEWEY,
WAYNE DEWEY**



**TWO OF THE FOUR HEIFERS IN THE
BEEF SUMMER YEARLING CLASS**

In the second class of Beef Junior Heifer Calves, the entries from Jeff and Nona Bock dominated the class. In first place was Crick Ridge Cricket, a daughter of Circle D Zoland. Placing second was Crick Ridge Calamity, a daughter of DMCC Oblong Zenith 18Z. And in third place was Crick Ridge Cleopatra, another daughter of Circle D Zoland.

Double M Cattle Company, LLC swept the third class of Beef Junior Heifer Calves. Topping the class was DMCC

Xaver Cupid 21C. She is a daughter of DMCC Big Boy Xaver 121X. Standing second was DMCC Polled Calvados Candy 14C. She is a daughter of SGF Polled Calvados. And placing third was DMCC Zoland Corelle 38C, a daughter of Circle D Zoland.

The Beef Summer Yearling Heifer Class was won by Dewey Brothers Miss Winky Belted Blaise. She was exhibited by Kaden and Korbyn Dewey and was sired by Crick Ridge Winky 28X. In second place was DMCC Oblong Borelle 12B. Sired by Oblong, she was shown by Double M Cattle Company, LLC. Another entry from Double M Cattle, DMCC Rocky Batara 117B, stood in third place. Her sire is HN Chief Rocky 53J.



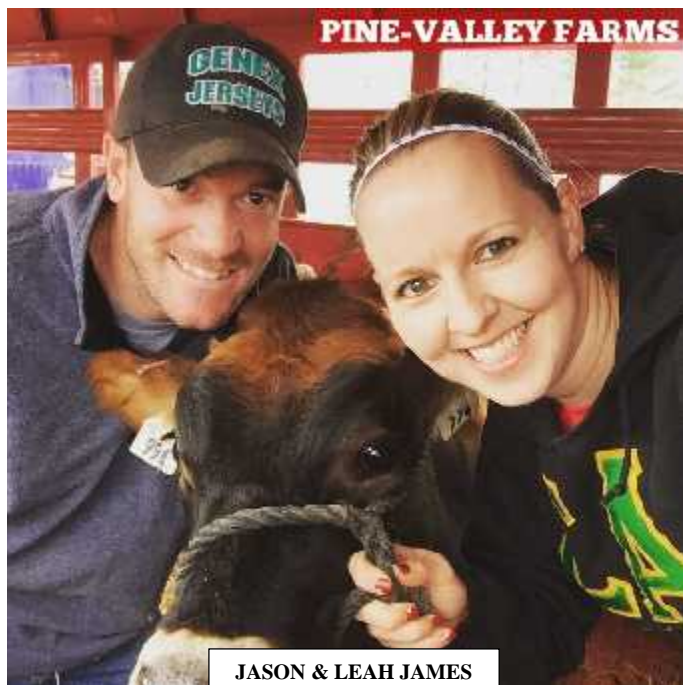
In the Pen of 3 Heifers Class, Double M Cattle Company, LLC's three heifers stood in first place. Second in the class were the three heifers entered by Jeff and Nona Bock.



After looking over the class winners in the championship parade, judge Patterson chose Kaden and Korbyn Dewey's Beef Summer Yearling Heifer, Dewey Brothers Miss Winky Belted Blaise, as the Grand Champion Beef Female. Judge Patterson selected DMCC Oblong Borelle 12B as the Reserve Grand Champion Beef Female. She was exhibited by Double M Cattle Company, LLC.



OUR JUDGES



JASON & LEAH JAMES

Jason James of Mineral Point, WI, made the placings in our dairy show. Jason and his wife, Leah, own and operate Pine Valley Farm on the gently rolling hills of Iowa County. Their dairy herd includes registered Milking Shorthorns, registered Jerseys, and registered Holsteins. Jason is a native of Mineral Point and after high school he attended and graduated from the University of Wisconsin-Platteville before returning to the home farm to take it to a new level as a dairy operation. While attending the UW-Platteville Jason was on their collegiate dairy cattle judging team. He has since judged at numerous shows both in Wisconsin and in other states.

Under his and Leah's management, Pine Valley Farm has become a recognized name within the registered dairy cattle business. They exhibit their animals at numerous shows, including the World Dairy Expo. They utilize embryo transfer and artificial insemination to improve the genetics of their herd. And they merchandize their top genetics by consigning animals and embryos to numerous well known consignment sales.

Their cows are housed in a free stall facility, milked in a parlor system and fed a total mixed ration. Jason and Leah are actively involved in the day to day operation of their dairy farm. Their Pine Valley Farm facebook page tells their farm's story and reveals the passion they have for dairy farming and their cows.

Amanda Patterson of Bloomington, WI, judged the beef show. Amanda is currently a senior at Iowa State University majoring in Animal Science. She is on the university's meat judging team and meat animal evaluation team. She has participated in a number of collegiate judging contests while on those teams.

Amanda grew up on a beef and sheep farm in Grant County, Wisconsin. Her family's farming operation includes a 120 head Simmental/Red Angus cow herd and a flock of 75 Suffolk sheep. While in 4-H and FFA Amanda showed beef and sheep as part of her projects.



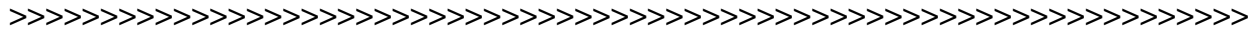
AMANDA PATTERSON

A WORD FROM THE PREZ



Hello Normande enthusiast! I'd like to take this opportunity to introduce myself as your new NANA board president. I've been involved with this amazing breed since 2004. Over the years I have found that Normande cattle and the people that work with them, are the friendliest, nicest beings to be around. I hope you have found the same. Please let me know if you have any thoughts or concerns about helping promote this awesome breed. I love talking cows and would enjoy hearing any feedback from you.

Barbara Wogsland
NANA President
(715) 572-4289



OVERAGE MORATORIUM

For NANA members who have overage animals in their herd that are not registered but could be, you now have an opportunity in the next six months to get them registered at a much reduced registration fee. The NANA Board of Directors has approved a moratorium on the \$100.00 registration fee for overage animals (two years or older) beginning January 1, 2016 and ending June 30, 2016. **During this six month moratorium NANA members can register any overage animal for \$20.00 per animal for a very substantial savings of \$80.00 per animal.**

Registrations can be done via NANA's website (Payment via PayPal must accompany an electronic submission.). Please notify NANA if you do submit registrations electronically so we can be sure we received them. If you would like to submit your registrations via the paper registration application and need the forms, contact the NANA office and we will send forms to you. Either way, in the words of America's favorite redneck philosopher "git r done!" This moratorium is an opportunity for you to increase the value of your Normandes at a very reasonable cost. If you have any questions contact the NANA office.

MORE NANA SHOW PICS

(Photos By: Karl Wogsland, Lisa Dewey & Sarah Mueller)



BARB WOGSLAND PREPARING EXHIBITOR/ANIMAL IDENTIFICATION TAGS



RAELENE SCHUETTE PREPARING A HEIFER FOR THE SHOW RING



DAIRY SPRING CALF CLASS



DAIRY DAM & OFFSPRING CLASS



NATASHA KOWALCHUK & HOWLING-OAKS UNO LEAH



L-R: JOSEPH BUENING, ALEIGHA ANN BUENING, NEW HOPE VIVECO DESTINY, ALEXA MILLER, NEW HOPE REDONDO DELTA-ET

AND MORE



RIBBONS & TROPHIES



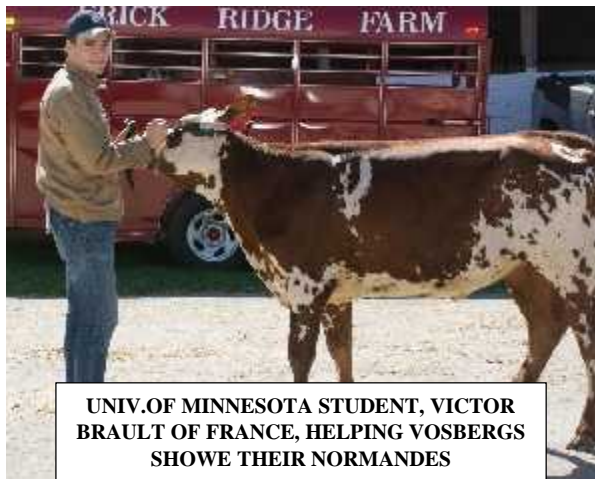
**SILENT AUCTION ITEM-
CHEESE TRAY**



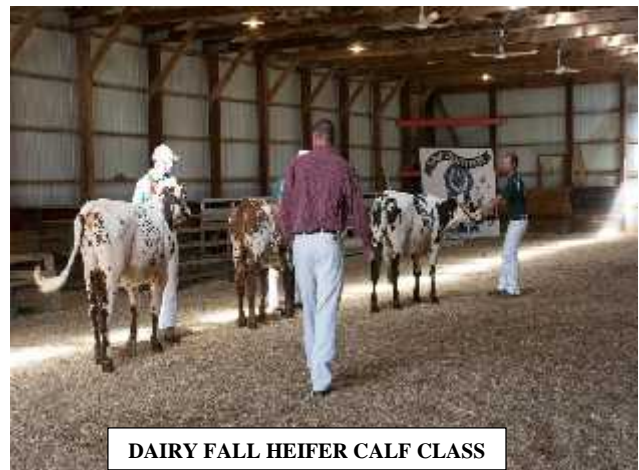
ABIGAIL & CHELSEY MUELLER



**WAITING TO ENTER THE SHOW
RING. L-R: LEXA MILLER, KAYDEN
DEWEY, JEFF BOCK, BRUCE BOLEN**



**UNIV. OF MINNESOTA STUDENT, VICTOR
BRAULT OF FRANCE, HELPING VOSBERGS
SHOW THEIR NORMANDES**



DAIRY FALL HEIFER CALF CLASS

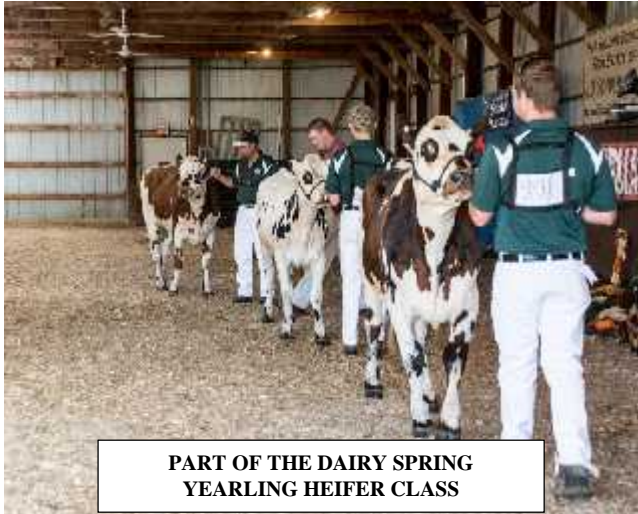
AND MORE



BEEF BULL PARADE FOR GRAND CHAMPION



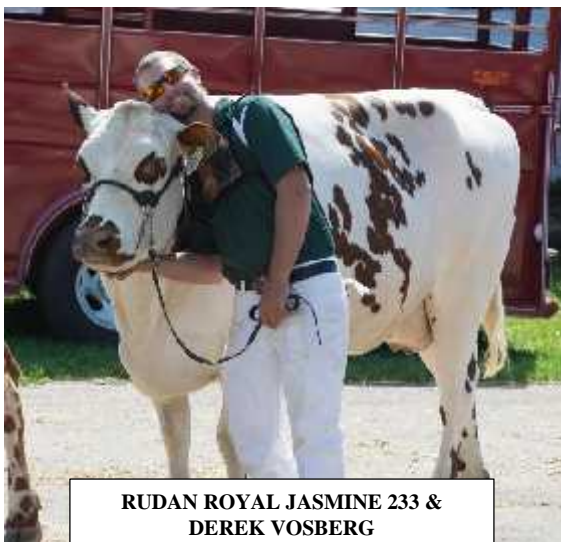
JEFF BOCK & CRICK RIDGE CAPTAIN CRUNCH



**PART OF THE DAIRY SPRING
YEARLING HEIFER CLASS**



**SILENT AUCTION ITEM-CHRISTMAS
ORNAMENTS**



**RUDAN ROYAL JASMINE 233 &
DEREK VOSBERG**



**L-R: KADEN DEWEY, BETH MUELLER, BRUCE
BOLEN & WAYNE DEWEY LEADING HEIFERS
IN BEEF FEMALE CHAMPION PARADE**

THE PROPOSAL



While it is always gratifying to have animals you bred or own selected as the Junior Champion Dairy Heifer, the Reserve Junior Champion Dairy Heifer, the Reserve Grand Champion Dairy Cow, the Grand Champion Beef Bull and the Reserve Grand Champion Beef Female at the NANA National Show, family is our priority. So what happened after the show was the **BEST** part of the day for the Vosberg and Mueller families!

CONGRATULATIONS DEREK & SARAH!

VOSBERG VALLEY VIEW FARM, INC.

DAN, RUTH, DEREK, MEGAN, & JARED VOSBERG

2295 CISSERVILLE RD.

SOUTH WAYNE, WI 53587

608-214-2296 608-214-2295

DOUBLE M CATTLE COMPANY, LLC.

**MIKE, SHARON, MATT, BETH, CHELSEY,
ABIGAIL, BRITTANY & SARAH MUELLER**

748 ENLOE RD.

REWEY, WI 53580

608-574-4853 608-642-0443