

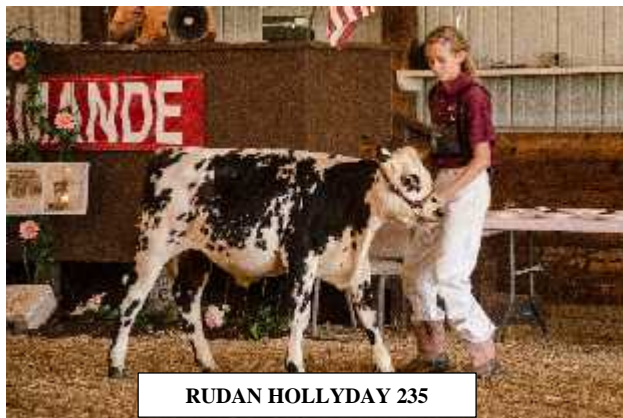
NATIONAL SHOW 2014

September 5 and 6 found twelve Normande breeders and exhibitors, and fifty-three Normandes occupying the Iowa County Fair Grounds for 2014 NANA National Show in Mineral Point, WI. The weather for the weekend was beautiful.

Breeders from Iowa, Missouri and Wisconsin brought Normandes to show case their breeding program and the breed. Those breeders were: Wayne and Lisa Dewey of Iowa Fall, IA (Circle D Farm); Kaden and Korbyn Dewey of Shell Lake, IA (Dewey Brothers Normandes); Bruce and Connie Bolen of Green Top, MO (Cedar Lane Normandes); Barbara Wogsland of Scandinavia, WI (New Hope Normandes); Rhonda Trembl-Knebel of Arpin, WI (Howling-Oaks Normandes); Raelene Schuette of Unity, WI (Riplinger Normandes); Lexa Miller of Mount Horeb, WI (Miller Tyme Normandes); Dan, Ruth, Derek, Megan and Jerrod Vosberg of South Wayne, WI (Vosberg Valley View Farm, Inc.); Mike, Sharon, Matt, Beth and Sarah Mueller of Rewey, WI (Double M Cattle Company, LLC); Andrea Schielckau of Loganville, WI; and Jeff and Nona Bock of River Falls, WI (Crick Ridge Farm).

Total animal numbers were down from past National shows due to two reasons. First, one of the exhibiting families has a key family member dealing with a battle with breast cancer and so they did not exhibit as many animals as they have in previous years. Secondly, four days after the show ten Normande breeders left for France to attend the Cinor 2014 so they too did not exhibit as many animals as they had in previous years.

Twenty-Nine Normandes were shown in the dairy show and they were placed by Doug Urban of ,WI. Twenty-Four Normandes were exhibited in the beef show and they were judged by Ken Hartzell of Mineral Point, WI.



The dairy show began with the Dairy Spring Bull Calf class. Topping the class for judge Urban was Rudan Hollyday 235. Sired by Hollydays and out of a Redondo daughter, he was exhibited by Vosberg Valley View Farm Inc. Placing second and third respectively was Riplinger Redondo Pierre-Twn and Riplinger Redondo Philippe-Twn. These very young twin bull calves were shown by Raelene Schuette and were sired by Redondo. Their dam is New Hope Royal Holl Paprika, a

daughter of Royal Holl.

Howling-Oaks R Baxter topped the Dairy Fall Bull Calf class. His sire is Redondo and his dam is Howling-Oaks R Babette. He was shown by Howling Oaks Normandes.

The Dairy Spring Yearling Bull class was won by Riplinger Redondo Pepper, a son of Redondo and out of New Hope Royal Holl Paprika. Raelene Schuette was the exhibitor.

In the Dairy Spring Heifer Calf class, Rudan Uvray SS Ruby 507-ET topped the class for Vosberg Valley View Farm, Inc. She is sired by Uvray and her dam is Car-Bon N Rosemarie-ET. Second in the class was Howling-Oaks Uno Leah. A daughter of New Hope Saintyorre Uno-ET and out of Howling-Oaks D Lyla. She was exhibited by Natasha Kowalchuk.



RUDAN UVRAY SS RUBY 507-ET & HOWLING-OAKS UNO LEAH

The Dairy Fall Heifer Calf class

saw Miller Tyme Dream standing at the top of the class. Shown by Lexa Miller, her sire is Alma



MILLER TYME DREAM

and her dam is New Hope Viveco Destiny.

Second in the class was Rudan Ulozon SS Jewel 445. Exhibited by Vosberg Valley View Farm, Inc, she is a daughter of Ulozon and her dam is Rudan Royal Jasmine. Placing third in the class for Vosberg Valley View Farm was Rudan Ulozon SS Dotie 458. Also sired by Ulozon, she is a daughter of Rudan Royal Delight 236.

Topping the Dairy Spring Yearling Heifer class was Rudan Ulozon SS Currant 367. Shown by Vosberg Valley View Farm Inc, she is a daughter of Ulozon and her dam is Rudan Telerama Charity. In second place was Howling-Oaks Nivea Celen. She was exhibited by Howling Oaks Normandes and her sire is Nivea. Her dam is Softerview Popeye Celeste. And placing third in the class was another daughter of Ulozon, Rudan Ulozon SS Frito 388. Vosberg Valley View Farm showed her and her dam is Rudan Messenger Fargo 184.



RUDAN ULOZON SS CURRANT 367

Rudan Royal Ruby 335, a daughter of Car-Bon Royal Holl Royal-ET, won the Dairy Fall Yearling Heifer class for Vosberg Valley View Farm. Her dam is Rudan Orgeres 970. Standing

second was New Hope Royal Holl Suzie. Exhibited by New Hope Normandes she is a daughter of Royal Holl and her dam is New Hope Singleton Sidney.



L-R: DREAM, LEXA MILLER, CURRANT, JERROD VOSBERG

When it came time to pick the Junior Champion Female of the dairy show, judge Doug Urban selected Miller Tyme Dream, winner of the Dairy Fall Heifer Class. Reserve Junior Champion Female was awarded to Rudan Ulozon SS Currant 367, winner of the Dairy Spring Yearling Heifer class.

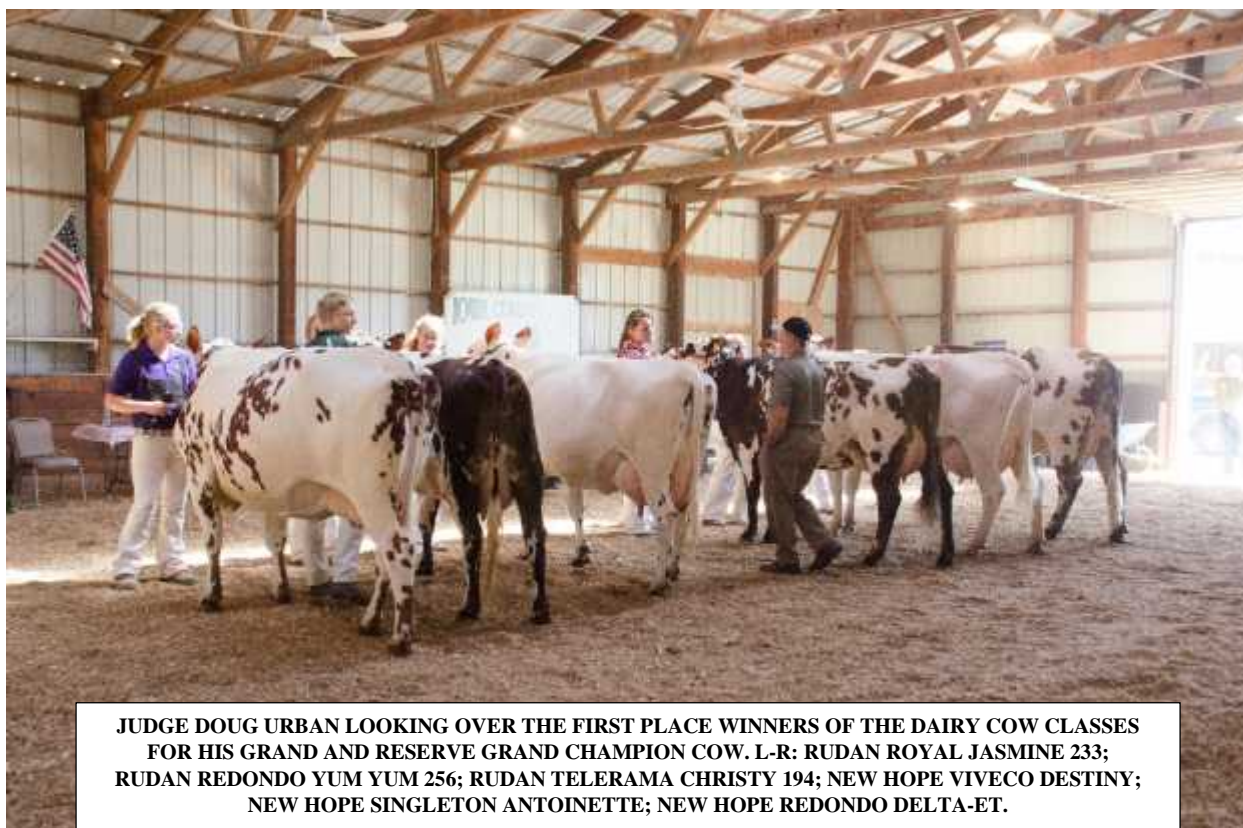


NEW HOPE VIVECO DESTINY

When the Dairy Milking 2 Year Olds' were led in the show ring, New Hope Viveco Destiny, exhibited by Lexa Miller, ended up placing first. Her sire is Viveco and her dam is New Hope Redondo Delta-ET. Standing second for Vosberg Valley View Farm was Rudan Redondo Yum Yum 256. A daughter of Redondo, her dam is Rudan Messenger Yoplait 812.

Rudan Telerama Christy 194 stood first in the Dairy Milking 3 Year Old class.

Shown by Vosberg Valley View Farm, her sire is Telerama and her dam is Rudan Messenger Cady. Second in the class was Howling-Oaks M Aurora. Exhibited by Howling-Oaks Normandes, her sire is New Hope Primate Monroe-ET. Her dam is Howling-Oaks Ricardo Arwen.



JUDGE DOUG URBAN LOOKING OVER THE FIRST PLACE WINNERS OF THE DAIRY COW CLASSES FOR HIS GRAND AND RESERVE GRAND CHAMPION COW. L-R: RUDAN ROYAL JASMINE 233; RUDAN REDONDO YUM YUM 256; RUDAN TELERAMA CHRISTY 194; NEW HOPE VIVECO DESTINY; NEW HOPE SINGLETON ANTOINETTE; NEW HOPE REDONDO DELTA-ET.

New Hope Normandes had the first place milking 4year old cow. Named, New Hope Singleton Antoinette, she is a daughter of Singleton and out of New Hope Annette.

In the 5 year old or older milking cow class the winner was New Hope Redondo Delta-ET. Her sire is Redondo and her dam is New Hope Fukrain Delilah. She was shown by New Hope Normandes. Howling-Oaks Normandes had the second place cow in this class. She was Softerview Popeye Celeste. Her sire is Softerview Joachim Popeye and her dam is Softerview Leathel Lee Lee.

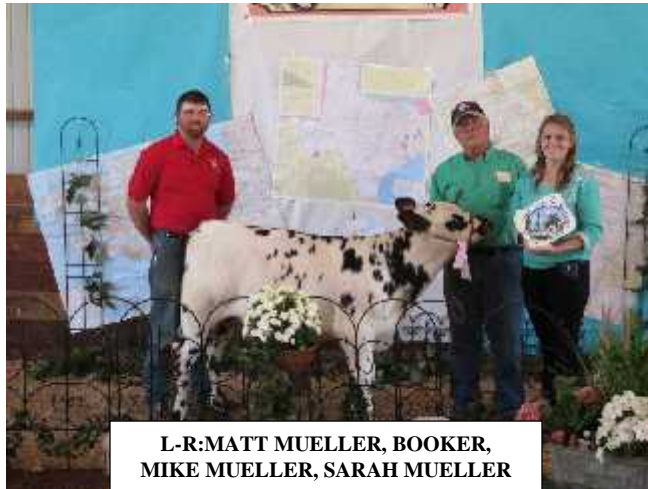
Winning the Dry Cow class was Rudan Royal Jasmine. A daughter of Car-Bon Royal Holl Royal-ET and out of Rudan Joachim Jazz 713. She was exhibited by Vosberg Valley View Farm



L-R: DOUG URBAN, DESTINY, LEXA MILLER, CHRISTY, KALIE SCHAFFER, DAN VOSBERG.

Judge Doug Urban found himself with a difficult decision when it came time to select a grand and reserve champion from the parade of first and second place animals in the dairy show. He ultimately went with youth and chose New Hope Viveco Destiny, the first place 2 year old class winner, as his Grand Champion. Destiny was exhibited by Lexa Miller and with her selection Miller found herself sweeping the dairy show since she not only had shown the Junior Champion Female, she now was exhibiting the Grand Champion,

who was the dam of her Junior Champion. Vosberg Valley View Farm could also lay claim to a sweep of the dairy show as their winning 3 year old milking cow, Rudan Telerama Christy 194, was selected as Reserve Grand Champion of the dairy show. Earlier their winning Dairy Spring Yearling Heifer had been selected as Reserve Junior Champion. And like Miller's champions, the Vosbergs reserve champion animals were a mother daughter combination.

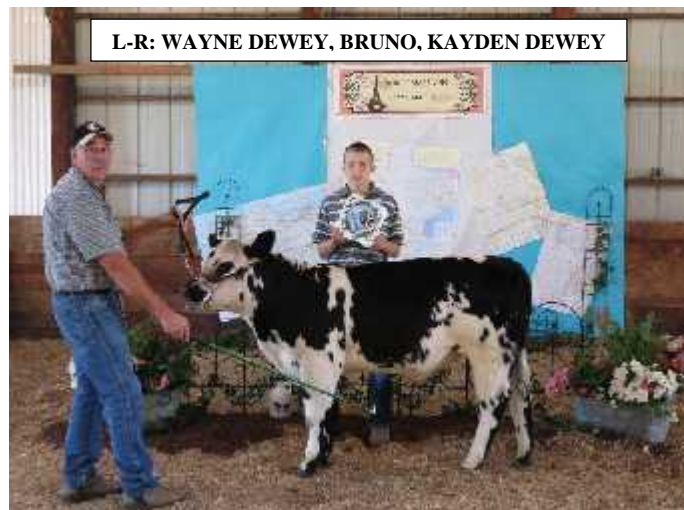


L-R: MATT MUELLER, BOOKER, MIKE MUELLER, SARAH MUELLER

When the NANA Board of Directors evaluated the National Show after the 2013 show, the Board made the decision to award a plate for the Grand Champion Bull and Reserve Grand Champion Bull of the Beef Show. The National Beef Show began with the Beef Junior Bull Calf class and the champion and reserve champion beef bulls came from this class. Placing first and Grand Champion Beef Bull was DMCC Samacy Booker 10A. He is a son of Sun Samacy 8L and his dam is MW Casier Unique 37U. He was exhibited by Double

M Cattle Company, LLC. Second in the class and Reserve Grand Champion Bull was Circle D Chief Bruno shown by Circle D Farm. His sire is SGF Polled Chief and his dam is Circle D Miss J Hawk Valerie. Placing third in the class was DMCC Titan Buster 44B. His sire is MW Rocky Titan 70T and his dam is MW Rocky Rizza.

The largest class of the beef show was the Beef Junior Heifer Calf class. Topping the class was Circle D Crick Bonnie. She was exhibited by Circle D Farm. Her sire is



L-R: WAYNE DEWEY, BRUNO, KAYDEN DEWEY



BEEF JUNIOR HEIFER CALF CLASS

Crick Ridge Winky 28X and her dam is Circle D Miss Fooler 206R. Standing in second place was SGF Stardust Breedra 14B-ET. Sired by SGF Stardust 1S and out of Miss Brush Point 746, she was exhibited by Double M Cattle Company LLC. Placing third in the class was CLN Zoilo Joy 676. Shown by Cedar Lane Normandes, she is a daughter of Crick Ridge Zoilo and out of CLN Neans Beatriss 641.

The Beef Summer Yearling Heifer class saw Double M Cattle Company LLC take the top three placings. First was DMCC Oblong Adreanna 5A. She is a daughter of Oblong and out of Sun MS Thumdyna 4N. Second was DMCC Montgomery Aurelia 14A. She is a daughter of New Hope Primate Montgomery-ET and her dam is DMCC Lunel Xrae 7X. And placing third was DMCC Titan Aza. Her sire is MW Rocky Titan 70T and her dam is MW Rocky Rizza.



CRICK RIDGE ADRIA

Winning the Beef Junior Yearling Heifer class was Crick Ridge Adria. She was exhibited by Crick Ridge Farm. Her sire is HN Chief Rocky and her dam is Crick Ridge Sophia.

The competition in the Cow/Calf Pair class was very strong. Circle D Farm had two young cow entries and Double M Cattle Company LLC had a 9 year old entry who was just beginning to show her age. Judge Hartzell eventually chose MW Rocky Rizza and her third place junior bull calf, DMCC Titan

Buster 44B, as his first place pair. Standing second was Circle D Foolerman Yuma with her calf. And third was Circle D Foolerman Zenaand with her calf.

For a number of years now the NANA National Show has had a Market Steer class but there had been no entries until this year. Andrea Schlieckau of Loganville, WI entered and showed her market steer. Although not quite ready for slaughter her steer was not too far from being finished so he place first in the class.



ANDREA SCHIELCKAU & HER MARKET STEER



BEEF SHOW PARADE OF CHAMPIONS

The parade of first and second place winners in the beef show was impressive according to judge Hartzell. He eventually chose the first and second place heifers in the Beef Summer Yearling Heifer class as his Grand and Reserve Champion Beef Females. Selected as Grand Champion Beef Female was DMCC Oblong Andreanna 5A. Selected as Reserve Grand Champion Female was DMCC Montgomery Aurelia 14A. Both animals were shown by Double M Cattle Company LLC.



**L-R: ADREANNA, KEN HARTZELL,
MATT & MIKE MUELLER**



**L-R: AURELIA, KEN HARTZELL,
MATT & MIKE MUELLER**

Group classes are a unique part of any cattle show and are shown after the champions are selected. Group classes put on display a breeder's breeding program or an animal's transmitting ability to its offspring. In the dairy show class of Best 3 Females, New Hope Normandes had the winning Best 3 Females entry. Vosberg Valley View Farm Inc. had the second place group.



**L-R: MILLER TYME DREAM & NEW HOPE VIVECO
DESTINY WERE FIRST PLACE DAM & OFFSPRING;
DESTINY & NEW HOPE REDONDO DELTA-ET WERE
THIRD PLACE DAM & OFFSPRING.**

The largest dairy group class, and certainly packed with quality, was the Dam & Offspring. Easily taking first place in this class was Miller Tyme Normandes entry with Lexa Miller's Grand Champion Dairy Cow and her Junior Champion Female. Second was the entry from Vosberg Valley View Farm that included the Vosberg's Reserve Junior Champion Female and the Reserve Grand Champion Dairy Cow. And placing third in the class was the entry from New Hope

Normandes and Miller Tyme Normandes. This dam and offspring pair included the first place 5 year and older dairy cow and the Grand Champion Dairy Cow.



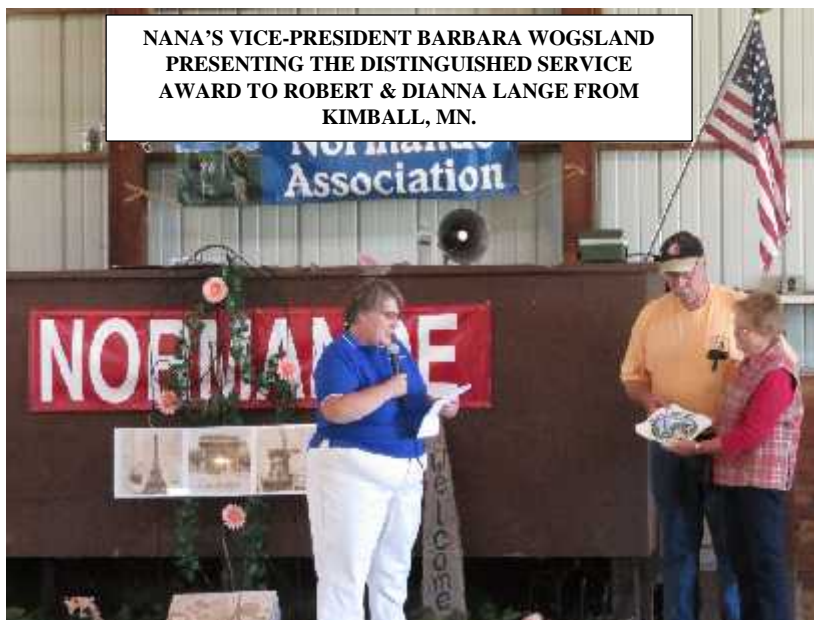
**FIRST PLACE PEN OF BULLS FOR
DOUBLE M CATTLE COMPANY, LLC**

Group classes in the beef show include a Pen of 3 Bulls and a Pen of 3 Heifers. The Mueller's of Double M Cattle Company LLC had the first place Pen of 3 Bulls. Their pen included the Grand Champion Beef Bull and the third place Junior Bull Calf. Double M Cattle Company LLC had the first and second place Pen of 3 Heifers. Their first place group included the Grand Champion Beef Female, the Reserve Champion Beef Female and the third place

Summer Yearling Heifer. Their second place Pen of 3 Heifers was made up of three junior heifer calves that were full ET sisters, one had placed third in the Junior Heifer class.



LANGES' HONORED



This year NANA awarded its Distinguished Service Award to a husband and wife team who have been breeding Normandes since 1976. River View Ranch Normandes is owned by Robert and Dianna Lange of Kimball, MN. Since its establishment, River View Ranch has been the home of a Normande herd consisting of about 30 registered cows and 2 or 3 registered bulls. Over the years River View Ranch has become known as a source of top quality polled Normande

genetics because many of their herd sires have come through a bull test program. With top genetics the Langes have sold cattle to buyers from numerous states.

Prior to his retirement Bob was a boilermaker, which often took him away from their farm and made it necessary for Dianna to look after the cattle. As a result, their breeding program emphasized longevity, calving ease, polledness, and quiet temperament so it was easier for Dianna to look after the herd while Bob was gone.

Breeding quality Normandes has not been the only commitment the Langes have made to the Normande breed. They have been very generous monetarily and with their time. In the past they have hosted the NANA Field Day. For many years now Bob has served on the NANA Board of Directors and has provided leadership to NANA as its current president.

Normande Genetics

Your source of imported French semen and embryos

Dairy

If you use the Normande for dairy production, our proven French bulls will bring you important advantages.

Proven French bulls are bulls tested in France on the Normande population. Their daughters are evaluated and compared to other heifers of the same generation. As a result, predictive values for the future daughters are calculated, and will allow you to pick and choose the traits you desire: milk production, components, size, feet & legs, calving ease, and more. Individual sheets for each bull are available on our website. Feel free to contact us for more information.



Valence, daughter of Redondo, a unique bull for production and type

Beef

Our bulls should be considered for beef for the following reasons:

- Calving ease information
- Muscularity index (see below)
- Genetic variability
- Predictable type traits such as stature, depth, feet & legs, etc...

Best bulls for muscularity: Atenay, Girophare, Idris, Ucany, Dairy Expo, Calvados, Uvray, Ulozon, Atenay, Antispam, Camembert, Roucoups, UTC

New to our line up: Antispam, Atenay, Aubray, Banania, Bretzel, Calvados, Camembert, Casto, Creole, Curcumin, Dairy Expo



Normande Genetics has been the main provider of French Normande genetics since 1997. We import **semen and embryos** from France, and we ship FedEx ground all across the U.S.

For more information, call **612 823 7212** or check our website:
www.normandegenetics.com, email: jerome@normandegenetics.com

Follow us on  facebook &  twitter for our quick updates

OUR JUDGES

Doug Urban of Marshfield, WI was the judge of NANA's National Dairy Show. Doug attended the University of Wisconsin-River Falls and majored in Dairy Science. While in college he was a member of the UW-River Falls dairy judging team and the president of the UW-River Falls Dairy Club.

Since 1981 Doug has judged numerous dairy cattle shows and has served on the Brown Swiss All-American Contest panel. He coached the Wood County 4-H Dairy Judging team for many years with many of those teams placing well in state and national contests. Doug has also served on the Wood County Holstein Board of Directors, the Wisconsin State Holstein Board of Directors, as a delegate to the National Holstein Convention, and as vice-president of the Professional Dairy Producers of Wisconsin.

Doug and his wife Mary have farmed since 1981. Together they have developed their Legendary Holstein and Brown Swiss herd. The Legendary herd is small by today's standards (48 cows), but that has not kept the Urbans' from breeding many outstanding animals. They have bred and developed numerous cows with milk production records of over 30,000 and 40,000 pounds of milk. Twenty-three cows with the Legendary prefix have been classified Excellent and over 100 cows with the Legendary prefix have been classified Very Good. Doug and Mary Urban have received the Holstein Association's Progressive Breeders Registry Award for seventeen years.

Ken Hartzell of Mineral Point, WI was the judge for NANA's National Beef Show. Ken was born and raised in Iowa and is a graduate of Iowa State University. He has a degree in Agricultural Education with an emphasis on Animal Science. He has owned cattle since 1964.

Ken is recognized as an international beef judge. He has judged numerous shows, including the National Steer Show in Costa Rica.

Ken and his wife, Marilyn, have two married daughters. Together they have a 30 cow herd of registered Angus that has been recognized statewide and nationally, especially when their daughters were involved in showing. Besides operating their farm, Ken also works as a crop risk management compliance officer for ADM.

[illegible]

NATASHA KOWALCHUK WINS HEIFER

Seventeen year old Natasha Kowalchuk of Amherst, WI was selected the winner of NANA's 2014 Youth Heifer Program. Natasha is the youngest daughter of John Kowalchuk and Debra Skupien. She has one older sister and three older brothers.

A senior at Amherst High School, Natasha is very active in her school's FFA chapter. She is currently the vice-president of her chapter and served as her chapter's parliamentarian during her junior year in high school. She was awarded the FFA Discovery Degree in 2010. In 2013 she was awarded the FFA Green Hand Degree. Natasha has received the FFA Gold Dairy Production



Efficiency award. And she been on her chapter's livestock and dairy judging teams. She was a member of her chapter's Dairy Judging team that judged in the 2013 World Dairy FFA Judging Contest.

Even though she does not live on a farm, Natasha has immersed herself in activities related to farming and agriculture. Her agricultural education studies include Animal Science, Farm Mechanics, FFA Leadership, Advanced FFA Leadership, Dairy Science, and Horticulture 1 & 2. She has served as a volunteer for the 2012 and 2013 Portage County Dairy Days, the 2014 Wisconsin Farm Technology Days, and the Portage County Fair.

Natasha has gained valuable farm experience by working for local farmers and helping her cousin, Cybil Fisher, take professional livestock photos during the summer. Since Natasha has helped out on the New Hope Normande dairy farm, she has made arrangements for her Normande calf to be housed there.

Following her graduation from high school, Natasha will be attending North Central Technical College at Wausau where she will be majoring in Agri Business, as well as studying to work as a Dental Assistant.

The calf, Howling-Oaks Uno Leah, awarded to Natasha was provided by Rhonda Trembl-Knebel of Howling-Oaks Normandes of Arpin, WI. Her sire is New Hope Saintyorre Uno-ET and her dam is Howling Oaks D Lyla.

Semen Specials



NEW HOPE SAINTYORRE UNO-ET



NEW HOPE TELERAMA RILEY-ET

Semen is available from these bulls from Genex/CRI Added Attractions program or from New Hope Normandes.
The semen has been collected in a CSS approved facility and can be shipped worldwide.

1. 49NO 0125 New Hope Saintyorre UNO-ET A0104622

Saintyorre x Madison x Girophare

Super-high milk yield potential from fabulous udders! Recently tested BB for Kappa casein and A1A2.

2. 49NO 1620 New Hope Primate MONTGOMERY-ET A0104454

Primate x Messager x Highlander

Medium-sized cattle with good production. Docile, easy to work with family. Full sister made over 22,000 @ 2 yrs. A1A2 test result.

3. 49NO 0135 New Hope Telerama RILEY-ET A0104826

Telerama x Macula x Indiscute

Riley has a very unique outcross pedigree with solid production. From what I see should add more strength and width throughout the body. This family has extremely sturdy feet and legs.

All three bulls are 100% pure Normande originating from elite French Normande herds. Call or email for more information. We can ship to your barn door or stop at the farm.

We are just 20 minutes from the Wisconsin Farm Technology Days. Stop in for a visit!

NEW HOPE NORMANDES

BARBARA WOGSLAND

11006 Bestul Road

Scandinavia, WI 54977

Email kblewogsland@wildblue.net

715 445-4288 home

website www.newhopenormandes.com

715 572-4289 cell

PINK RIBBONS

We hope you noticed there were pink ribbons on all the animals shown at this year's National Show. The ribbons were attached to the halters of each animal shown to symbolize support and prayers for Ruth Vosberg of Vosberg Valley View Farm, Inc. Early this year Ruth was diagnosed with breast cancer. After surgery she underwent chemotherapy treatments over the summer and was unable to attend this year's show because she had had a chemo treatment the week of September 1.



Ruth is a key member of the Vosberg dairy farm operation. And her enthusiasm for Normandes meant Vosberg Valley View Farm always had a large show string at the national show. So her fellow Normande breeders recognized her battle with cancer by giving her a hand painted flower vase with her favorite Scripture verse on it, "Always be joyful. Always keep praying. No matter what happens, always be thankful, for this is God's will for you who belong to Christ Jesus." 1 Thessalonians 5:16-18. And, by having pink ribbons attached to the halters of the animals shown to symbolize their prayerful support.

While we are happy to report Ruth's battle is going well, her and her family's Christain faith has been sorely tested since the national show. On October 31, 2014, Ruth's older brother, Art Green, was tragically killed when he was struck by a grain auger that had been blown over by a very strong gust of wind. And then on November 12, 2014, Ruth's 88 year old father, Riley Green, passed away. While the family of Normande breeders in NANA are

thankful Ruth is on the road to recovery and healing, we extend to her and her family our heartfelt sympathy, thoughts and prayers.

2014 NANA MEMBERSHIP MEETING AND REPORT

A total of twenty-seven NANA members and guests participated in the Annual Membership Meeting held on the evening of September 5, 2014, in Mineral Point, WI. Prior to the Membership Meeting a catered sandwich meal was enjoyed by those who were present.

At 8:10 pm NANA president Bob Lange called the meeting to order. The minutes of the 2013 Membership Meeting were read and approved. The 2014 financial report of the association was presented (see below) and it was also accepted. Mike Mueller presented a brief report on the NANA office (see below). A report was made of Jeff and Nona Bock's hosting of the Northern Wisconsin Beef Producers Association summer picnic on their Crick Ridge farm. The picnic was well attended and many of those attending were impressed with the Normandes they saw. NANA's participation in the Wisconsin Cattlemen's Beef Tent during the Wisconsin Farm Technology Days was also report. And those present were reminded NANA would have a booth at the upcoming World Dairy Expo in Madison, WI.

Under old business the upcoming Cinor 2014 in France was discussed. Folks were informed the French Normande Association was sponsoring two young Normande breeders from the U.S. to participate in an international showmanship contest during the Normande show at the Space Show. Members were informed the NANA Board had nominated four individuals to the French and Raelene Schuette and Lexa Miller were selected for the honor. It was also noted Bill and Rhonda Knebel, Wayne and Lisa Dewey, Bob and Diana Lange, and Mike and Sharon Mueller would also be attending the Cinor 2014.

There was no new business brought before the members so the meeting moved to the election of members to the Board of Directors. Robert Lange, Barb Wogsland and Jeff Bock were elected to serve three year terms on the board. Following the election of board members the meeting was adjourned.

Following the Annual Membership Meeting the Board of Directors met briefly and elected NANA's officers. Bob Lange was elected president. Barb Wogsland was elected vice-president. Paul Moechnig was elected secretary. And Mike Mueller was elected treasurer. There were no other matters brought before the board for board action.

THANK YOU!

DIANNA AND I WANT TO THANK NANA FOR RECOGNIZING US WITH THE DISTINGUISHED SERVICE AWARD. WE WERE TRULY SURPRISED AND HONORED TO BE GIVEN THIS AWARD.

SINCE WE BEGAN BREEDING NORMANDES IN 1976, WE HAVE ENJOYED THE GOOD PEOPLE WE HAVE MET WHILE WORKING WITHIN NANA. ONE OF OUR GOALS WHEN WE BEGAN BREEDING NORMANDES WAS TO BREED A HERD OF POLLED ANIMALS. IT HAS BEEN GRATIFYING TO US TO HAVE REACHED THAT GOAL.

WE LOVE THE NORMANDE BREED AND HAVE THOROUGHLY ENJOYED BREEDING THEM AND WORKING WITHIN NANA TO PROMOTE THE BREED. THANK YOU VERY MUCH FOR THIS HONOR.

BOB & DIANNA LANGE

2014 ANNUAL MEMBERSHIP MEETING REPORT

NANA 2014 ANNUAL REPORT

ACTIVE ADULT MEMBERS:	45
ACTIVE JUNIOR MEMBERS:	1
ASSOCIATE MEMBERS:	3
NUMBER OF ANIMALS REGISTERED:	199 (Previous year-232) (41 Males) (158 Females) (65 Half bloods) (113 Percentage) (20 Full bloods)
NUMBER OF ANIMALS TRANSFERRED:	65 (Previous year-43)

NANA 2014 FINANCIAL REPORT

NANA RESERVE ACCOUNT:	\$ 574.65
NANA GENERAL FUNDS (CHECKING)	637.20

CURRENT TOTAL FUNDS ON HAND	\$1,211.85
INCOME (09-11-13 THRU 09-04-14)	
Hats	\$ 45.00
Craft Items	60.00
Donations	540.00
Dues	1,900.00
Calendars/Ads	1,048.00
Registrations/Transfers	3,130.00

TOTAL	\$6,723..00

EXPENSES (SAME DATES AS ABOVE)	
Rent (Shows)	\$2,502.00
Office supplies	2,968.26
Calendars	355.00
Advertising	75.00
Postage	788.14
Miss.	170.00
Website	35.95

TOTAL	\$6894.35



THANK YOY!

**THANK YOU SO MUCH FOR GIVING ME
A GREAT OPPORTUNITY TO START MY
NORMANDE HERD. I LOVE MY CALF
LEAH, AND I CAN'T WAIT TO SHOW HER
AGAIN NEXT YEAR AT THE NATIONAL
SHOW AND MY COUNTY FAIRS.**

THANK YOU AGAIN.

NATASHA KOWALCHUK



THANK YOY!

**THANK YOU SO MUCH FOR GIVING ME
A GREAT OPPORTUNITY TO START MY
NORMANDE HERD. I LOVE MY CALF
LEAH, AND I CAN'T WAIT TO SHOW HER
AGAIN NEXT YEAR AT THE NATIONAL
SHOW AND MY COUNTY FAIRS.**

THANK YOU AGAIN.

NATASHA KOWALCHUK



THANK YOY!

**THANK YOU SO MUCH FOR GIVING ME
A GREAT OPPORTUNITY TO START MY
NORMANDE HERD. I LOVE MY CALF
LEAH, AND I CAN'T WAIT TO SHOW HER
AGAIN NEXT YEAR AT THE NATIONAL
SHOW AND MY COUNTY FAIRS.**

THANK YOU AGAIN.

NATASHA KOWALCHUK



THANK YOY!

**THANK YOU SO MUCH FOR GIVING ME
A GREAT OPPORTUNITY TO START MY
NORMANDE HERD. I LOVE MY CALF
LEAH, AND I CAN'T WAIT TO SHOW HER
AGAIN NEXT YEAR AT THE NATIONAL
SHOW AND MY COUNTY FAIRS.**

THANK YOU AGAIN.

NATASHA KOWALCHUK

DOUBLE M CATTLE COMPANY, LLC

DOUBLE M CATTLE COMPANY, LLC

DOUBLE M CATTLE COMPANY, LLC

DOUBLE M CATTLE COMPANY, LLC

DOUBLE M CATTLE COMPANY, LLC