

## **JERRY HAUS RECOGNIZED**



**JERRY HAUS (r) RECEIVING HIS RECOGNITION  
PLATE FROM JEFF BOCK (l)**

Retired Normande breeder and former NANA Board of Director Gerald Haus of Prescott, WI was awarded a recognition plate for his voluntary service to NANA during the years he was breeding Normandes. Haus grew up on the family farm located in south east North

Dakota, along with his three brothers and two sisters.

Following his

graduation from high school Jerry studied civil engineering for two years before becoming a member of the US Army. Jerry served his country for two years and received a Purple Heart and Medal of Honor during his one year deployment in the Vietnam War. After his honorable discharge from the Army Jerry continued his college education at the University of North Dakota and graduated with a BA in Business. In 1973 he began a seventeen year career with Northwest Airlines, eventually ending up in their Properties and Facilities Department. In 1990 he left Northwest and with a friend he started a new aviation properties consulting company based in New York city. In the late 1990's Haus began a second company, AvAirPros, which managed terminal facilities for airlines in a number of airports, including Terminal One at the JFK airport in New York city. When Jerry sold his position in AvAirPros in 2011 the companies had grown to 160 employees.

In 1995 Jerry married his lovely wife, Paulette, and they built a new house on the farm Jerry owned near Prescott, WI. On September 15, 1999, their family doubled in size with the premature birth of their twin daughters, Anna and Eliza. Because they were born so early, Jerry and Paulette could not take the girls home until Christmas Eve, December 24, 1999. Today the girls are busy eighth graders and active 14 year olds. As you might imagine twin girls would have similar likes. According to Jerry and Paulette, Anna and Eliza love horses, swimming, their Ipads, and eating expensive steaks. But each daughter is unique and special as well, Anna loves reading while Eliza loves art.

The first Normandes Jerry saw were at the St. Croix Valley Bull Test. Jerry was on the bull test board and served as the organization's treasurer for many years. His many years of service to the St. Croix Valley Bull Test has been recognized by the beef improvement organization with the

placing of a sign bearing his name at the UW-River Falls Mann Valley Research Farm. His initial exposure to the Normande breed motivated him to add Normandes to his beef herd.

A year later he purchased SGF Polled Levi and another Normande bull at the Jackson, MN Bull Test sale and used them on his largely Angus herd. So impressed with the resulting calves Jerry went to Hibbing, MN and purchased a number of cows from Brian and Judy Toivola of Spruce Grove Farm. Over the next few years Jerry transitioned to an all registered Normande herd, eventually getting up to a herd totaling 45 cows.

As a Normande breeder Jerry became very active in NANA and in promoting the breed. He became a member in 1994 and served on the NANA Board of Directors for many years. His promotion of the breed included entering bulls in the St. Croix Valley Bull Test, entering steers in the World Beef Expo Fed Steer Futurity Contest, and entering steers in the Great Western Beef Expo. Jerry's success as a breeder was verified by the awards he received. In 2001 he had the Highest Index Normande bull in the St. Croix Valley Bull Test. The awards his steers received that were entered in the World Beef Expo Fed Steer Futurity Contest included: lowest cost of gain pen and highest profit pen overall in 1996; the highest marbling carcass and superior yield grade carcass in 1999; highest marbling carcass in 2000; and superior yield grade pen and superior yield grade carcass in 2001.

In 2005 Jerry sold his herd of Normandes to Mike Mueller of Rewey, WI and officially retired. An avid fisherman, Jerry now spends a lot of time in his “Snobear” ice fishing. He also enjoys taking his daughters to school, having coffee in the am at the local coffee shop, having lunch with friends, and reading the Wall Street Journal on a daily basis.

The North American Normande Association honors and thanks Jerry Haus for his service and for his promotion of the Normande breed. And wishes him the best in his retirement.

[illegible]

## BULLS ON TEST

Paul and Delores Moechnig of Lake City, MN and Wayne and Lisa Dewey of Iowa Falls, IA have entered 3 Normande bulls in the St. Croix Valley Bull Test at River Falls, WI. The bulls will be sold in a public auction on April 26, 2014.

The bulls entered from the PDM Normande herd are PDM Falcon 031A, a son of the French bull Heliport. He was born on 05-01-2013 and had a

birth weight of 78 pounds. His weaning weight was 437 pounds and he began the test weighing

The bull entered from the Circle D Farm is Circle D Armor 206A. A son of Crick Ridge Winky 28X, he was born on 04-23- and had a birth weight of 94 pounds. His weaning weight was 460 pounds and he began the test weighing 550 pounds.



## CIRCLE D ARMOR 206A



More

[illegible]

# NANA ANNUAL MEETING

Since there was no old or new business presented to the NANA members the board of directors election was held after the approval of the minutes and acceptance of the treasurer's report. Paul Moechnig, Ken Rabas, and Mike Mueller were elected to the NANA Board of Directors unopposed.

Following the Annual Meeting the Board of Directors met and voted to keep the Board organized as it was.

## **2013 ANNUAL MEMBERSHIP MEETING REPORT**

### **NANA 2012 ANNUAL REPORT**

ACTIVE ADULT MEMBERS:	45
ACTIVE JUNIOR MEMBERS:	1
ASSOCIATE MEMBERS:	3
NUMBER OF ANIMALS REGISTERED:	199 (Previous year-232)
	(41 Males)
	(158 Females)
	(65 Half bloods)
	(113 Percentage)
	(20 Full bloods)
NUMBER OF ANIMALS TRANSFERRED:	65 (Previous year-43)

### **NANA 2011 FINANCIAL REPORT**

NANA RESERVE ACCOUNT:	\$574.65
NANA GENERAL FUNDS (CHECKING)	637.20
	-----
CURRENT TOTAL FUNDS ON HAND	\$1,211.85
INCOME (09-16-11 THRU 09-10-12)	
Hats	\$ 45.00
Craft Items	60.00
Donations	540.00
Dues	1,900.00
Calendars/Ads	1,048.00
Registrations/Transfers	3,130.00
	-----
TOTAL	\$6,723.00

<b>Rent (Shows)</b>	<b>\$2,502.00</b>
<b>Office supplies</b>	<b>2,968.26</b>
<b>Calendars</b>	<b>355.00</b>
<b>Advertising</b>	<b>75.00</b>
<b>Postage</b>	<b>788.14</b>
<b>Miss.</b>	<b>170.00</b>
<b>Website</b>	<b>35.95</b>

**BILLS TO BE PAID AS OF 09-10-13:**

FAIR GROUND RENT	\$ 350.00
SHOW JUDGES	200.00
SHOW AWARDS	527.50
ANNUAL MEETING CATERING	600.00

[illegible]

If you have paid attention to the NANA Board of Director's page you will have noticed Nellie Burch is listed on the page as the Youth Representative on the Board. Nellie is a youth member of NANA and expressed an interest in serving on the Board of Directors so she could be more active in her membership. After much discussion the Board made the decision to appoint Burch to the Board of Directors as a non-voting youth representative for a one year term. Burch will participate in Board meetings primarily by teleconference.

[illegible]



# Normande Genetics

**Your source of imported French semen and embryos**

## Dairy

If you use the Normande for dairy production, our proven French bulls will bring you important advantages.

Proven French bulls are bulls tested in France on the Normande population. Their daughters are evaluated and compared to other heifers of the same generation. As a result, predictive values for the future daughters are calculated, and will allow you to pick and choose the traits you desire: milk production, components, size, feet & legs, calving ease, and more. Individual sheets for each bull are available on our website. Feel free to contact us for more information.



*Valence, daughter of Redondo, a unique bull for production and type*

## Beef

Our bulls should be considered for beef for the following reasons:

- Calving ease information
- Muscularity index (see below)
- Genetic variability
- Predictable type traits such as stature, depth, feet & legs, etc...

Best bulls for muscularity: Atenay, Girophare, Idris, Ucany, Dairy Expo, Calvados, Uvray, Ulozon, Atenay, Antispam, Camembert, Roucoups, UTC

**New to our line up:** Antispam, Atenay, Aubray, Banania, Bretzel, Calvados, Camembert, Casto, Creole, Curcumin, Dairy Expo



**Normande Genetics** has been the main provider of French Normande genetics since 1997. We import **semen and embryos** from France, and we ship FedEx ground all across the U.S.

For more information, call **612 823 7212** or check our website:  
[www.normandegenetics.com](http://www.normandegenetics.com), email: [jerome@normandegenetics.com](mailto:jerome@normandegenetics.com)

Follow us on  facebook &  twitter for our quick updates

## **NORMANDES STRUT THEIR STUFF IN IOWA**

Young Kaden Dewey, eleven year old son of Matt and Jessica Dewey of Iowa had a very successful and exciting show season in 2013. Kaden is in 4-H and exhibited his Normandes at the Bremer County Fair and the Iowa State Fair. Kaden's success has proven hard work and dedication pays off for those who love working with cattle and showing them.



Kaden exhibited five Normandes at the Bremer County Fair in Waverly, IA. His county fair show string consisted of two market steers, one breeding heifer, and a cow/calf pair. After all the dust had settled in the show ring Kaden found himself possessing the Reserve Grand Champion ribbon for his cow/calf pair; the Champion Normande ribbon for his breeding heifer; and Champion and Reserve Champion Normande ribbons for his two market steers. Kaden's two steers also ranked third and seventh overall in

the Rate of Gain class. His third place steer had gained 4.4 pounds per day and his seventh place steer gained 3.73 pounds per day.

Two weeks later Kaden was walking the tanbark at the Iowa State Fair with his Market Steer and his Breeding Heifer. Here the competition was stiffer and his Normandes really strutted their stuff. Kaden's Market Steer was selected as the Grand Champion All Other Breeds Market Steer and the steer was also the Reserve Champion in the Live High Quality Beef of Merit class. And the same steer placed second overall in the Rate of Gain competition with an average daily rate of gain of 4.13 pounds. Since his steer was selected Grand Champion of All Other Breeds, Kaden competed in the Parade of Champions Ceremony. An experience very few first time State Fair exhibitors get to have, and it was broadcast on Iowa Public Television.

Kaden's success at the Iowa State Fair was not done after getting home from the fair. A few weeks after getting home from the fair he was notified by mail his Normande Market Steer had ranked third in the Window A High Cutability Grid Market in the 4-H Beef of Merit class at the State Fair. Prior to leaving the State Fair the 4-H beef exhibitors who had entered their animals in the 4-H Beef of Merit class could enter a prediction of how well they thought their steer would do in the class. Fifty-two 4-H beef exhibitors entered their predictions and Kaden placed second with his prediction.



The editor thanks Jessica Dewey for providing the information for this article.

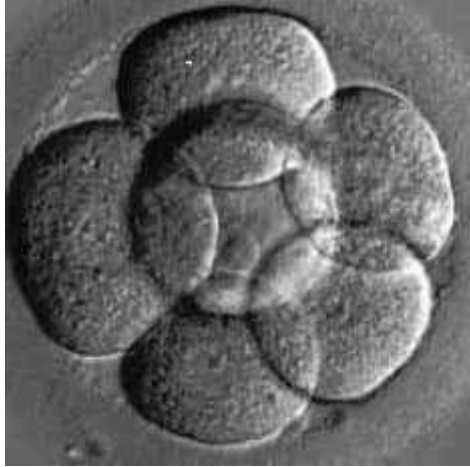
**CINOR 2014**



Contact the NANA office for registration forms and information.



# Embryos for You!!



I have a number of Normande cows and heifers available to make 88 to 100% Normande embryos for you. This is the fastest way to increase the genetic value of your herd. A large selection of mutually agreeable sires is available to father the embryos. Call or email for more detailed information. Shipping is available worldwide.

Don't forget I also have available 100% Normande semen collected in CSS approved facilities for sale. Check CRI/Genex's Added Attractions Program or Sierra Desert Breeders for more information on New Hope bulls. As always I keep a small inventory for sale at the farm. Don't hesitate to call or stop by.

## **NEW HOPE NORMANDES**

**BARBARA WOGSLAND**

11006 Bestul Road

Scandinavia, WI 54977

715 445-4288 home, 715 572-4289 cell [kbklewogsland@wildblue.net](mailto:kbklewogsland@wildblue.net)  
email newhopenormandes.com website



**NORTH AMERICAN NORMANDE ASSOCIATION**

**748 ENLOE RD.**

**REWEY, WI 53580**

**608-943-6091 800-573-6254**

**www.normandeassociation.com**



**NANA MEMBERSHIP APPLICATION**

If you would like to become a member of the North American Normande Association,

Simply complete the form below and mail it with your dues payment to the address above. NANA has three types of membership: Active (\$40.00/yr.), Associate (\$20.00) and Junior (under 18 years old, \$10.00/yr).

**NAME:** (Please print exactly as you wish your membership issued.):

---

**FARM NAMES:**\_\_\_\_\_

**HERD PREFIX:**\_\_\_\_\_

**ADDRESS:**\_\_\_\_\_

**CITY:**\_\_\_\_\_ **STATE:**\_\_\_\_\_ **ZIP:**\_\_\_\_\_

**Email:**\_\_\_\_\_

**PHONE:**\_\_\_\_\_

**AUTHORIZED SIGNATURE:**\_\_\_\_\_

**HERD CODE LETTERS:** (Use 2-4 letters and/or numbers to indicate your herd code.

Example: SGF for Spruce Grove Farm. Put down two  
choices in case one is already in use.)\_\_\_\_\_

**I BREED/RAISE NORMANDES FOR:**\_\_\_\_\_ **DAIRY** \_\_\_\_\_ **BEEF**

---

**OFFICE USE ONLY:    MEMBERSHIP NUMBER:**\_\_\_\_\_

**HERD CODE:**\_\_\_\_\_

## CONSISTENT RESULTS



MW ROCKY TITAN 70T

Double M Cattle Company LLC believes performance data is critical for the progress and success of any breed or farm enterprise. Since 1992 we have been gathering birth weights and weaning weights on our calves. In late 2012, Double M Cattle Company LLC began collecting carcass data to measure the progress of our breeding program and to confirm Normande genetics produces a quality carcass that meets the beef industry's standards. The resulting carcass data has been gratifying and is verifying our breeding program is moving in the right direction.

121 Normande sired animals have had their carcasses evaluated, 29 were females and 92 were males. The average harvest weight for the 121 head was 1218 pounds.. The average dressing percentage was 63.28%. Eighty per cent of the Normandes graded prime or choice, and twenty per cent graded select. The average hot carcass weight was 753 pounds. The average rib-eye area was 12.62 sq. inches. The average back fat thickness was .357 of an inch.

Titan and Trek are two of our herd sires producing the above carcass results. We have a number of bulls available to help you have the same genetic and performance improvement. We are your source for performance measured genetics.

**DOUBLE M CATTLE  
COMPANY, LLC**

**MIKE & MATTHEW  
MUELLER**

**748 ENLOE RD., REWEY, WI  
53580**

**608-943-6091 608-574-4853 608-  
642-0443**

**VISIT US ON FACEBOOK**



CRICK RIDGE TREK

### BE A PIG

PORK IS NOW THE MOST WIDELY PRODUCED MEAT IN THE WORLD. THE MOST RECENT NUMBERS SAY THAT OF ALL 250 MILLION TONS OF MEAT PRODUCED, 39% IS PORK, 32% IS POULTRY, 25% IS BEEF, AND 5% IS MUTTON. FIFTY YEARS AGO, BEEF HAD 42% SHARE OF THE WORLD MARKET AND CHICKEN HAD ONLY 12%.

### WE FARM IN A JUNGLE

CROPS COMPETE WITH 30,000 SPECIES OF WEEDS, 3,000 SPECIES OF NEMATODES, AND UP TO 10,000 SPECIES OF PLANT-EATING INSECTS

### U.S. ANIMAL PRODUCTION EFFICIENCY

**CHICKENS:** The U.S. produces 20% of the world's broiler meat and 8% of its eggs on just 11% of the world's chickens.

**HOGS:** The U.S. produces 10% of the world's pork on 7% of the world's hogs.

**CATTLE:** The U.S. produces 19% of the world's beef and 15% of its milk on just 7% of the world's cattle. In Mexico it takes 5 dairy cows to produce the same amount of milk as 1 U.S. dairy cow.

Source: United Nations Food & Agriculture Organization.

### U.S. FARMERS, A BLT, & A GLASS OF MILK

**BACON:** Compared to 1950 U.S. farmers produce 176% more pork per sow with 44% fewer sows.

**CORN FOR THE PIGS:** Compared to 1950 U.S. farmers produce 333% more corn on only 11% more acres.

**LETTUCE:** U.S. farmers produce 12 times the amount produced in 1950 on 2.5% more land.

**MAYONNAISE:** Made from eggs & soybean oil. Egg producers get 53% more eggs from 3% fewer hens compared to 1950. Soybean growers get 11 times the amount of soybean production on 5 times the acreage compared to 1950.

**WHEAT:** Compared to 1950 U.S. farmers use 6% fewer acres but produce 69% more bushels.

**MILK:** Compared to 1950 U.S. dairy farmers produce 63% more milk with 58% fewer cows.

In 1908 American consumers spent half of their income on food. Today it is less than 10% of their income.

**SOURCE:** Charlie Arnot, CEO of the Center for Food Integrity

### IS A BLACK HAIR COAT MORE VALUABLE?

In 2010, researchers at West Texas A & M University compared the carcass value of black hided cattle to non-blacks using 18,575 head. Their findings showed there was minimal difference in the value of a black hided carcass compared to a non-black hided carcass.

Compared with other colors, the black cattle finished with heavier carcass weights, more fat thickness, smaller ribeyes, more marbling & higher numeric USDA yield grade. But when discounts & premiums for yield grade & quality grade were factored in, the difference in carcass value was only 44 cents per hundred weight (or \$3.00-\$4.00/animal) in favor of the black hided cattle. This higher return for black hided cattle was due primarily to heavier carcass weights resulting in the slightly higher returns.

SOURCE: Drover's Magazine