

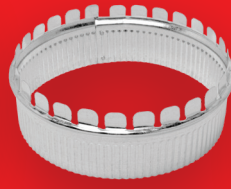
HCP[®]

HEATING & COOLING PRODUCTS

PRODUCT CATALOG

American made since...

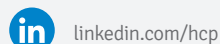
FOREVER





Heating and Cooling Products has been a manufacturer of quality HVAC sheet metal duct, pipe and fittings since 1955. Founded as LB Manufacturing in Cleveland, HCP has since established itself as one of the leading producers of residential and commercial ductwork in the nation. Family owned by the Blaushild family, HCP currently has two manufacturing locations in Ohio. Our headquarters is located in Mount Vernon, OH with a sister plant in Byesville, OH. We service the wholesale distribution and retail market in 25 states and Canada. Our product range includes galvanized pipe, elbows, boots, rectangular duct, duct fittings, wall stack, oval, black stove pipe and fittings, spiral pipe & fittings as well as pre-sealed fittings and pipe for the HVAC professional.

Heating and Cooling Products continues to evolve with market demand. We continue to broaden our product offering as we look for ways to improve quality, service, and meet the growing needs of our customers. Based on our values, family ownership, and solid foundation, Heating & Cooling Products looks forward, poised for growth, as we partner with our customers, providing them with quality products and excellent service at a competitive price.



Round Pipe & Fittings

Round Pipe

Round Pipe

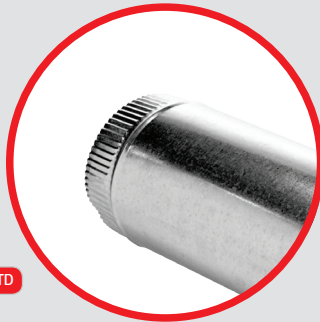
101

Round Pipe

Size Range: 3" - 24"

Lengths: 2' 3' 4' 5' 10'

Available Gauges: 24 26 28 STD



Round Elbows & Angles

150

90° Adjustable Elbows

Size Range: 3" - 24"

Available Gauges: 24 26 28 STD



151

45° Adjustable Angles

Size Range: 3" - 24"

Available Gauges: 24 26 28 STD



Reducers & Increaseers

430

Tapered Reducer

Size Range: 4" x 3" - 26" x 24"

Available Gauges: 24 26 28 STD



ASK FOR SEALED

431

Tapered Reducer/Increaseer without Crimp

Size Range: 4" x 3" - 26" x 24"



432

Tapered Increaseer

Size Range: 3" x 4" - 24" x 26"



441

Low Profile Reducer

Size Range: 4" x 3" - 22" x 16"



450

Shortway Reducer

Size Range: 4" x 3" - 18" x 16"



451

Shortway Reducer/Increaseer without Crimp

Size Range: 10" x 6" x 6" - 10" x 10" x 10"



452

Shortway Increaseer

Size Range: 3" x 4" - 16" x 18"



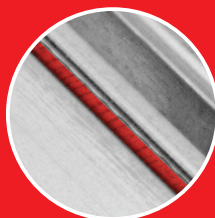
Rain Caps

024

Rain Cap

Size Range: 3" - 18"

Available Gauges: 26 28



UltraSeal™

HCP

Save Time and Money with HCP UltraSeal™ Pipe.

- Sealant applied in the snap-lock seam sets our UltraSeal pipe apart from all others in its class.
- Eliminates need for additional tapes and mastics on the longitudinal seam.
- Reduces installation cost by eliminating the need for costly tapes and/or mastics and reducing labor time.
- 24,26,28 gauge construction available now in 2' or 5' lengths and sizes 4" - 20".

LEARN MORE AT hc-products.com

Round Pipe & Fittings

Round Pipe

Wye Branches

529

Wye Branch

Size Range: 3"x 3"x 3" - 9"x 9"x 9"

Available Gauges: 24 26 28 STD

530

Wye Branch

Size Range: 10" x 10" x 10" - 14" x 14" x 8"

Available Gauges: 24 26 28 STD



ASK FOR SEALED

425

24 26 28 STD

Wye

Size Range: 3" x 3" x 3" - 18" x 18" x 16"



422

24 26 28 STD

Wye Branch

Size Range: 4" x 4" x 3" - 9" x 9" x 5"



641

24 26 28 STD

Wye Branch

Size Range: 3" x 3" x 3" - 9" x 9" x 6"



642

24 26 28 STD

Wye Branch

Size Range: 10" x 6" x 6" - 10" x 10" x 10"



643

24 26 28 STD

Wye Branch

Size Range: 12" x 6" x 6" - 16" x 14" x 14"



Straight Tees

401

Straight Tee

Size Range: 3" x 3" x 3" - 9" x 9" x 9"

Available Gauges: 24 26 28 STD



ASK FOR SEALED

825

24 26 28 STD

Full Flow Tee

Size Range: 3" - 16"



201

24 26 28 STD

Reducing Tee

Size Range: 4" x 3" x 3" - 9" x 8" x 9"



301

24 26 28 STD

Tee

Size Range: 5" x 5" x 6" - 14" x 14" x 16"



424

24 26 28 STD

Tee

Size Range: 4" - 24"



Tee Caps

021

Tee Cap with Crimp

Size Range: 3" - 24"

Available Gauges: 24 26 28



022

Tee Cap without Crimp

Size Range: 3" - 24"

Available Gauges: 24 26 28



Drawbands & Dampers

018

Assembled Dampers

Size Range: 4" - 16"

Available Gauges: 24 26 28



011

24 26 28 STD

Duct Damper

Size Range: 8" x 8" - 28" x 8"



015

24 26 28 STD

Drawband

Size Range: 4" - 16"



016

24 26 28 STD

Drawband with Bolts

Size Range: 4" - 14"



017

24 26 28 STD

Unassembled Dampers

Size Range: 4" - 16"



019

24 26 28 STD

Volume Damper

Size Range: 4" - 20"



128

24 26 28 STD

Damper Section

Size Range: 4" x 7" - 8" x 7", 5" x 12" - 18" x 12"



172

24 26 28 STD

Transformer

Size Range: 4" x 8" x 6" - 14" x 20" x 12"



055

24 26 28 STD

Exhaust Vent with Damper

Size Range: 4" - 10"



079

Bridging Strip Hanger

Size Range: 16" / 22"



080

Adjustable Pipe Hangers

Size Range: 12" - 18"



970

Hanging Strap

Size Range: 1", 1½", 2" by 100' & 200' rolls



984

Storm Collar

Size Range: 3" - 18"



Flex Connectors

993

Flex Connector with Crimp

Size Range: 3" - 20"

Available Gauges: 28 STD



994

Flex Connector with 6" body

Size Range: 3" - 20"

Available Gauges: 28 STD



TotalSeal™

by HCP

No tape. No mastic.™



Dramatically reduce installation time with factory-sealed snap-lock pipe and fittings.

Snap, screw, sealed.

TotalSeal™ pipe is installed by seating the un-crimped end of a pipe section or fitting into the transverse channel which contains a butyl sealant. Once seated into the channel, simply fasten 3 sheet metal screws around the connection to secure the pipe and fitting in place.



Perfect seal every time on both longitudinal & transverse seams

TotalSeal™
MASTIC
2x
 longer to install* than TotalSeal™

TAPE
2.5x
 longer to install* than TotalSeal™

Less installation time.
More efficiency.

ZIPGRIP™

The addition of an extra bead on the crimped end of TotalSeal™ fittings allows for easy flex duct connection. The ridge created by the extra beading acts as a barrier to hold a zip tie in place, securing the flex connection and offering an easier and more hassle-free installation.

*Time study based upon the installation of three sections of five foot pipe, register boot, and take-off assembly.

Oval Pipe & Fittings

Oval Pipe

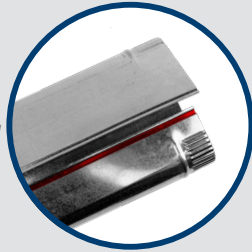
111

Oval Pipe

Size Range: 4"x 100" - 8"x 120"

Available Gauges: **STD**

Also available with UltraSeal™



Oval Elbows & Angles

155

Oval Flat Elbow

Size Range: 4" - 8"

Available Gauges: **STD**



156

Oval Vertical Elbow

Size Range: 4" - 8"

Available Gauges: **STD**



157

Oval Flat Angle

Size Range: 4" - 8"

Available Gauges: **STD**



158

Oval Vertical Angle

Size Range: 4" - 8"

Available Gauges: **STD**



Oval to Round Boots

585

**Round To Oval Boot
90° No Crimp**

Size Range: 4"x 4" - 8"x 8"

Available Gauges: **STD**



586

Oval End Boot

Size Range: 4" - 8"



587

Oval Straight Boot

Size Range: 4" - 10"



**ASK FOR
SEALED**

573

Tapered 90° Round To Oval Boot

Size Range: 4" x 5" - 7" x 8"



574

Round To Oval 90° Boot

Size Range: 4" x 4" - 8" x 8"



576

Oval To Round 90° Tapered Boot

Size Range: 5" x 4" - 8" x 7"



578

Oval To Round 90° Boot

Size Range: 4" x 4" - 8" x 8"



579

Round to Oval 45° Boot

Size Range: 5" x 5" - 6" x 6" -
7" x 7" - 8" x 8"



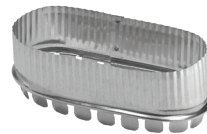
Oval Start Collars

512

Oval Start Collar

Size Range: 4" - 10"

Available Gauges: **STD**



513

**Oval Start Collar
without Crimp**

Size Range: 4" - 10"

Available Gauges: **STD**



Oval

Oval Pipe & Fittings

Oval

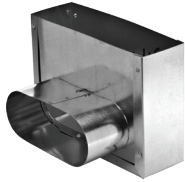
Oval Fittings

583

90° Oval Register Box

Size Range: 2¼" x 10" x 6" - 4" x 12" x 8"

Available Gauges: **STD**



ASK FOR SEALED

485

Oval Side Ceiling Box

Size Range: 8" x 8" x 6" - 10" x 10" x 7"



582

Oval Register Box 45 degree

Size Range: 2¼" x 10" x 6" - 4" x 12" x 7"



588

Oval Reverse Elbow

Size Range: 5" - 8"



589

Oval Fire Stop

Size Range: 6" - 8"



Oval Stackheads

967

Oval Stackhead with Ears 9" Throat

Size Range: 4" x 10" x 4" - 8" x 14" x 8"

Available Gauges: **STD**



ASK FOR SEALED

966

Oval Stackhead with Ears 7" Throat

Size Range: 4" x 10" x 5" - 6" x 14" x 8"



969

Oval Double Stackhead 9" & 12" Throat

Size Range: 4" x 10" x 5" - 6" x 12" x 8"

AVAILABLE WITH A SPLITTER ON THE INSIDE



987

Oval Stackhead 12" Throat

Size Range: 4" x 10" x 4" - 6" x 14" x 7"



Oval Start Collars

580

Oval Adapter

Size Range: 3¼" x 10" x 6" - 4" x 12" x 7"

Available Gauges: **STD**



581

Oval Adapter with Crimp

Size Range: 2¼" x 10" x 6" - 4" x 12" x 7"

Available Gauges: **STD**



Oval Straight Boots

773

ASK FOR SEALED

Oval Straight Boot

Size Range: 2¼" x 10" x 6" - 21¼" x 12" x 6" - 2¼" x 12" x 7" - 4" x 10" x 6" - 4" x 12" x 6" - 4" x 12" x 7"

Available Gauges: **STD**



Oval Toe Kick Boot

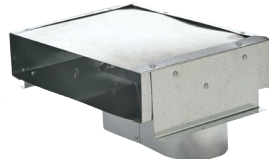
593

90° Oval Toe Kick Boot

Size Range: 2¼" x 10" x 6" - 3¼" x 10" x 6"

Available Gauges: **STD**

ASK FOR SEALED



Oval In-Line Register Boxes

968

Oval In-line Register Box 9" Throat

Size Range: 4" x 10" x 6" - 6" x 14" x 8"

Available Gauges: **STD**



988

Oval In-line Register Box 12" Throat

Size Range: 4" x 10" x 5" - 4" x 12" x 7" - 6" x 12" x 7" - 6" x 16" x 6"

Available Gauges: **STD**



Plenums

Plenums

Plenums

200

2-Piece Plenum with Top

Size Range: 11 1/4" x 20 3/8" x 26" -
30 1/4" x 30 1/4" x 12"

Available Gauges: 26



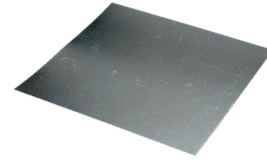
Top For Adjustable Plenums

310

Plenum Top

Size Range: 12" x 12" - 36" x 36"

Available Gauges: 26



Adjustable Plenum

320

Adjustable Plenum with Top

Size Range: 16" x 16" x 36" - 32" x 32" x 36"

Available Gauges: 26



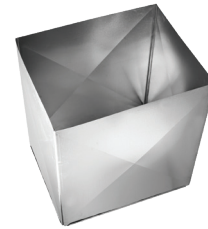
Knockdown Plenum

400

4-Piece Knockdown Plenum with Top

Size Range: 8" x 18" x 36" - 27" x 33" x 36"

Available Gauges: 26



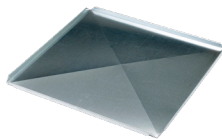
Plenum Top

410

Plenum Top

Size Range: 13" x 18" - 26" x 26"

Available Gauges: 26



4-Piece Plenum

500

4 Piece Plenum with Top & Removable Front Panel

Size Range: 12 3/4" x 19 3/4" x 35" -
24" x 24" x 47"

Available Gauges: 26



Plenum Side

420

Plenum Side

Size Range: 12" x 36" - 26" x 47"

Available Gauges: 26



Register Boots, Boxes & Pans

Elbow Boots

259

ASK FOR SEALED

Elbow Boot

Size Range: 21/4"x 10"x 4"- 12"x 12"x 10"

Available Gauges: **STD**



End Boots

671

End Boot

Size Range: 21/4"x 10"x 4"- 8"x 14"x 10"

Available Gauges: **STD**



ASK FOR SEALED

681 **STD**

Left End Boot

Size Range: 21/4"x 10"x 4"- 4"x 14"x 7"



691 **STD**

Right End Boot

Size Range: 21/4"x 10"x 4"- 4"x 14"x 7"



Straight Boots

772

ASK FOR SEALED

Straight Boot (747 used for 6X Sizes)

Size Range: 21/4"x 10"x 4"- 4"x 14"x 8" 6"x 6"x 4"- 16"x 16"x 14"

Available Gauges: **STD**



Boots with Rails

279

Elbow Boot with 25" Rails

Size Range: 4"x 6"x 4"- 8"x 14"x 9"

Available Gauges: **28** **STD**



ASK FOR SEALED

280 **26** **28** **STD**

Straight Boot with 25" Rails

Size Range: 4"x 6"x 4"- 12"x 12"x 10"



289 **STD**

Elbow Boot with 25" Rails

Size Range: 6"x 10"x 6"



Ceiling Boots

269

ASK FOR SEALED

Basement Ceiling Boot

Size Range: 4"x 6"x 6"- 8"x 12"x 8"

Available Gauges: **STD**



Register Boots, Boxes & Pans

Register Boots, Boxes & Pans

Ceiling & Floor Boxes

470

ASK FOR SEALED

Top Ceiling Box

Size Range: 6"x 6"x 4" - 18"x 18"x 18"

Available Gauges: **STD**



472

6" Blind Floor Box

Size Range: 4"x 10" - 24"x 14"

Available Gauges: **26 28 STD**

OTHER DEPTHS AVAILABLE UPON REQUEST.



471

ASK FOR SEALED

Side Ceiling Box

Size Range: 6"x 6"x 4" - 14"x 18"x 12"

Available Gauges: **STD**



473

12" Blind Floor Box

Size Range: 4"x 8" - 30"x 30"

Available Gauges: **26 28 STD**

OTHER DEPTHS AVAILABLE UPON REQUEST.



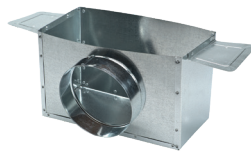
474

Ceiling Head w/ Ears

Size Range: 6"x 6"x 4" - 6"x 14"x 10"

Available Gauges: **26 28 STD**

ALSO AVAILABLE WITHOUT EARS



Toekick w/ Brackets

594

Toekick with Brackets

Size Range: 2 1/4"x 10"x 6" / 2 1/4"x 12"x 6"

Available Gauges: **STD**



Transition

478

Square to Round Transition

Size Range: 4"x 10"x 4" - 24"x 24"x 18"

Available Gauges: **26**



Diffusers

498

Tapered Diffuser 17" Plate

Size Range: 5"x 6" - 6"x 8" - 6"x 10" - 7"x 8" - 8"x 10" - 10"x 12"

Available Gauges: **28 STD**



496

ASK FOR SEALED

Ceiling Diffuser

Size Range: 6"x 6" - 8"x 6" - 8"x 7" - 10"x 8"

Available Gauges: **STD**



Register Pans

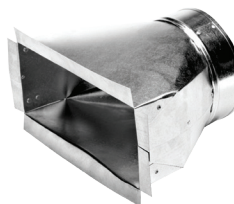
744

ASK FOR SEALED

Register Pan with 1" Flanges

Size Range: 4"x 8"x 4" - 14"x 14"x 10"

Available Gauges: **STD**



745

Register Pan with Recessed Flanges

Size Range: 4"x 10"x 4" - 12"x 12"x 10"



746

Register Pan with Recessed Flanges & Ears

Size Range: 4"x 10"x 5" - 6"x 14"x 8"



747

Register Pan No Flanges

Size Range: 6"x 6"x 4" - 16"x 16"x 14"



748

Square to Round Transition

Size Range: 6"x 6"x 6" - 20 1/2"x 25 1/2"x 16"



Register Boots, Boxes & Pans

Rails

929

Snap-On Rail

Size Range: 4" x 6" x 25" - 8" x 14" x 25"

Available Gauges: **26** **STD**



514

Boot Rail

Size Range: 24" & 26"

Available Gauges: **STD**

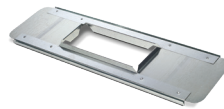


923

Plaster Frame without Clips

Size Range: 4" x 8" x 26" - 8" x 12" x 26"

Available Gauges: **STD**



Return Air Box

072

Return Air Box with 5" Filter Rack

Size Range: 14³/₄" x 28¹/₂" x 20" - 25" x 21" x 20"

Available Gauges: **24**

072

Return Air Box with 1" Filter Rack

Size Range: 14¹/₂" x 20¹/₂" x 22" - 25" x 21" x 20"

Available Gauges: **24**



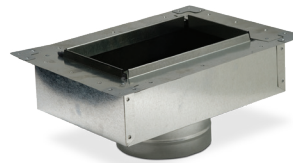
Insulated Boxes

272

Insulated Box with Flange

Size Range: 4" x 8" x 4" - 12" x 12" x 12"

Available Gauges: **STD**

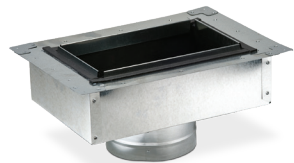


273

Insulated Box with Flange & Gasket

Size Range: 4" x 8" x 4" - 12" x 12" x 8"

Available Gauges: **STD**



Insulated Boxes w/ Ductboard Tops

276

Insulated Box with Ductboard Top

Size Range: 4" x 8" - 18" x 18"

Available Gauges: **STD**

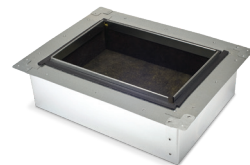


277

Insulated Box with Duct Board Top & Gasket

Size Range: 8" x 12" - 16" x 16"

Available Gauges: **STD**



Start Collars, Take-Offs & Flowtites

Start Collars

012

Start Collar with Crimp

Size Range: 3" - 20"

Available Gauges: **26 28 STD**



013

Start Collar without Crimp

Size Range: 3" - 20"

Available Gauges: **26 28 STD**



Adjustable Takeoffs

293

Adjustable Take-Off with 2" Rise

Size Range: 5" - 6"

Available Gauges: **STD**



290 **STD**

Lever Lock Takeoff

Size Range: 6"



291 **STD**

Pivot Lock Take-Off

Size Range: 6"



292 **STD**

Half Tab Take-Off with Crimp

Size Range: 6"



297 **26**

Elbow FlowTite

Size Range: 4" - 12"



298 **STD**

EZ Turn Ductboard Take-Off

Size Range: 4" - 8"
Also available for 1½" & 2" ductboard



299 **STD**

EZ Turn Take-Off

Size Range: 4" - 8"



365 **STD**

Top Take-Off with 1" Rise

Size Range: 4" - 7" - 8"



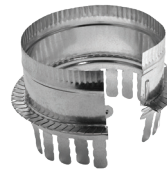
Ductboard Collars

044

Ductboard Snap Collar

Size Range: 5" - 20", 9" & larger 28GA

Available Gauges: **28 STD**



133DB **STD**

Ductboard Take-Off with 1" Rise

Size Range: 4" - 12"



136DB **26 28 STD**

Adjustable Round Take-Off with Ductboard Tabs with 1" rise

Size Range: 6½" x 6½" x 4" - 7" x 18" x 14"



344 **28 26 STD**

Ductboard Snap Collar with Sealant

Size Range: 4" - 22"



345 **26 28 STD**

Ductboard Snap Collar Assembled with Sealant

Size Range: 4" - 22"



348 **26 28 STD**

Ductboard Snap Collar with Scoop, Damper and Sealant

Size Range: 4" - 22"



014 **26 28 STD**

Ductboard Start Collar with Crimp & Bead

Size Range: 4" - 20" Also available for 1½" & 2" ductboard



020 **26 28 STD**

Ductboard Start Collar with Damper, Crimp & Bead

Size Range: 4" - 20" Also available for 1½" & 2" ductboard



025 **26 28 STD**

Ductboard Start Collar with Scoop & Damper

Size Range: 4" - 14"



045 **26 28 STD**

Ductboard Snap Collar Assembled

Size Range: 4" - 20"



046 **26 28 STD**

Ductboard Snap Collar Assembled with Damper

Size Range: 4" - 20"



049 **26 28 STD**

Ductboard Snap Collar with 1" Ring

Size Range: 4" - 20"



146 **26 28 STD**

Steel Stack Collar Triple Tabs

Size Range: 4" - 20"



147 **26 28 STD**

Steel Stack Collar Triple Tabs with Damper

Size Range: 4" - 20"



Extended Start Collars

126 **ASK FOR SEALED**

Start Collar with 6" Body

Size Range: 3" - 20"

Available Gauges: **24 26 28 STD**



124 **24 26 28 STD**

Start Collar with 4" Body

Size Range: 3" - 20"



125 **24 26 28 STD**

Start Collar with 4" Body & Damper

Size Range: 3" - 20"



127 **24 26 28 STD**

Start Collar with 6" Body & Damper

Size Range: 3" - 20"



129 **24 26 28 STD**

Start Collar with 6" Body Scoop & Damper

Size Range: 5" - 20"



Start Collars, Take-Offs & Flowtites

Start Collars, Take-Off Fittings & Flowtites

Start Collars, Take-Offs & Flowtites

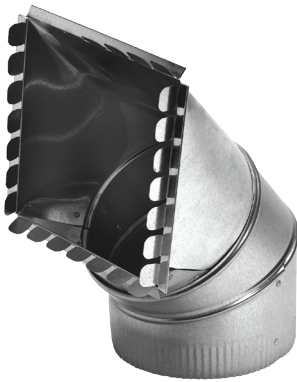
Take Offs

136

Adjustable Round Take-Off

Size Range: 6½" x 6½" x 4" - 7" x 18" x 14" 9" & larger 28GA

Available Gauges: 28 STD



ASK FOR SEALED

130

Take-Off with Gasket

Size Range: 4" - 14"



131

Take-Off with Gasket and Damper

Size Range: 4" - 14"



132

Side Take-Off with 0" Rise

Size Range: 4" - 10"



133

Take-Off with 1" Rise

Size Range: 4" - 12"



134

Take-Off with 2" Rise

Size Range: 4" - 10"



137

Plenum Take-Off with Gasket

Size Range: 6½" x 6½" x 4" - 7" x 16" x 12"



163

Double Take-Off

Size Range: 5" - 7"



Flowtites & Conicals

217

FlowTite Plain

Size Range: 4" - 20"

Available Gauges: 26 28 STD



ASK FOR SEALED

211

FlowTite with 1" Wide Flange

Size Range: 4" - 20", 9" & larger 28GA



212

FlowTite with 1" Wide Flange with Damper

Size Range: 4" - 20", 9" & larger 28GA



218

FlowTite with Damper

Size Range: 4" - 20"



219

FlowTite with Scoop

Size Range: 4" - 20"



235

Conical FlowTite Plain

Size Range: 6" x 4" - 18" x 16"



236

Conical FlowTite with Gasket

Size Range: 6" x 4" - 18" x 16"



603

Saddle Tee with Gasket

Size Range: 4" on 4" - 5" - 18" on 24" - 28"



604

Saddle Tee with Gasket & Damper

Size Range: 4" on 4" - 5" - 18" on 24" - 28"



8235

Conical FlowTite

Size Range: 4" - 26"



8236

Conical FlowTite with Damper

Size Range: 4" - 20"



Twist-In Collars

224

ASK FOR SEALED

Twist-In Collar with Scoop & Damper

Size Range: 4" - 24"

Available Gauges: 28 STD



221

Twist-In Collar

Size Range: 4" - 24"



222

Twist-In Collar with Damper

Size Range: 4" - 24"



223

Twist-In Collar with Scoop

Size Range: 4" - 24"



231

Tapered Twist-In Collar

Size Range: 4" - 24"



232

Tapered Twist-In Collar with Damper

Size Range: 4" - 24"



234

Tapered Twist-In Collar with Scoop & Damper

Size Range: 4" - 24"



Ductboard Twist-In Collars

226

ASK FOR SEALED

Ductboard Twist-In Collar with Damper

Size Range: 4" - 24" Also available for 1½" & 2" ductboard

Available Gauges: 26 28 STD



225

Ductboard Twist-In Collar

Size Range: 4" - 24" Also available for 1½" & 2" ductboard, 9" & larger 28GA



227

Ductboard Twist-In Collar with Scoop

Size Range: 4" - 24" Also available for 1½" & 2" ductboard



228

Ductboard Twist-In Collar with Scoop & Damper

Size Range: 4" - 24" Also available for 1½" & 2" ductboard



Duct & Duct Fittings

Duct & Duct Fittings

Rectangular Duct

153

Rectangular Duct

Size Range: 8" x 8" - 18" x 22"
Lengths: 48", 60", 96"

Available Gauges: 26 28

DUCT WIDTH + HEIGHT CANNOT EXCEED 40" TOTAL




Boots & Coil Boxes

076

Cold Air Boot (Side Load)

Size Range: 14" x 20" - 20" x 10"
20" x 25" - 25" x 10"


Available Gauges: 26



070

Cold Air Boot (Top Load)


Size Range: 8" x 20" - 16" x 20" - 25" x 20" - 24" x 10"



412

Insulated Coil Box


Size Range: 21 1/2" x 25" x 26 high



060

Universal Boot

Size Range: 24" x 8" x 27" - 25" x 12" x 27"




Cleats & Hangers

516

S Cleat

Size Range: 8" - 120"


Available Gauges: 26 28 STD



081

Duct Hanger


Size Range: UNIVERSAL



700

Drive Cleat


Size Range: 6" - 48"



515

Standing S Cleat


Size Range: 1/2" x 1" x 10" - 1" x 1" x 120"



997

Angles


Size Range: 1/2" x 1/2" x 28" - 3/8" x 2" x 96"



517

Drive Cleat

Size Range: 8" - 120"



Duct Reducers


009

Trunk Reducer

Size Range: 10" x 8" - 8" x 8" - 30" x 10" - 24" x 10"

Available Gauges: 24 26 28

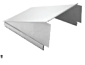
AVAILABLE W/S CLEAT REDUCTION, AVAILABLE W/DRIVE CLEAT REDUCTION & AVAILABLE W/WIDTH S CLEAT & DRIVE REDUCTIONS



112

Trunk Adapter


Size Range: 2" x 8" - 10" x 8"



117

Reducing Adapter

Size Range: 2" x 8" - 4" x 8" - 6" x 8"



Flat Elbows & Angles

002

Flat 90° Duct Elbow

Size Range: 8" x 8" - 30" x 12"

Available Gauges: 24 26 28



001

Flat 45° Duct Angle

Size Range: 8" x 8" - 30" x 12"



091

Flat 45° Duct Angle Square Throat

Size Range: 8" x 8" - 30" x 12"



092

Flat 90° Duct Elbow Square Throat

Size Range: 8" x 8" - 30" x 12"



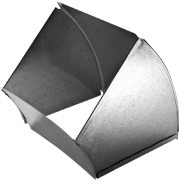
Vertical Elbows & Angles

003

Vertical 45° Duct Angle

Size Range: 8" x 8" - 30" x 12"


Available Gauges: 24 26 28



004

Vertical 90° Duct Elbow


Size Range: 6" x 6" - 30" x 12"



093

Vertical 45° Duct Angle Square Throat


Size Range: 8" x 8" - 30" x 12"



094

Vertical 90° Duct Elbow Square Throat

Size Range: 8" x 8" - 30" x 12"



Duct & Duct Fittings

Duct & Duct Fittings

Cold Air Return Fittings

068

Filter Rack Side Load

Size Range: 16" x 20" x 7" - 20" x 25" x 8"

Available Gauges: 24 26 28



069

Filter Rack Top Load

Size Range: 16" x 20" x 4" - 20" x 25" x 7"



073

AVAILABLE WITHOUT CUTOUTS

Return Air Box

Size Range: 15½" x 22" x 18" - 24½" x 28" x 20"



074

Return Air Support Box

Size Range: 10" x 28" x 30" - 8" x 24" - 12" x 28" x 40" - 12" x 24"



075

Filter Frame with Screw Holes

Size Range: 14" x 20" x 1¼" - 25" x 25" x 1¼"



086

Canvas Connector

Size Range: 4" x 10" x 5" - 6" x 14" x 8"



312

Manual Holder

Size Range: 9" x 10"



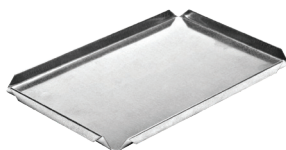
Duct End Caps

005

Duct End Cap

Size Range: 8" x 8" - 30" x 10"

Available Gauges: 24 26 28



4 SLIPS ON FLANGES FOR RAW EDGE OF DUCT

006

Reverse End Cap

Size Range: 8" x 8" - 30" x 10"

Available Gauges: 24 26 28



SLIP AND DRIVE FLANGES

Joist Panning

518

Joist Panning

Size Range: 10" x 17½" - 48" x 48"

Available Gauges: 26 28 STD



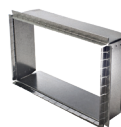
Duct Start Collars

007

Trunk Tap Start Collar

Size Range: 8" x 8" - 30" x 10"

Available Gauges: 26 28



114C

Center Transition Collar

Size Range: 12" x 8" - 10" x 10" - 30" x 8" - 12" x 20"



519

Duct Start Collar

Size Range: 8" x 8" - 30" x 10"



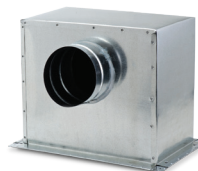
Insulated Side Out Boxes

274

Insulated Side Out Box

Size Range: 4" x 10" x 5" - 8" x 8" x 7"

Available Gauges: STD



275

Insulated Side Out Box with Gasket

Size Range: 6" x 6" x 6" - 8" x 8" x 6" - 8" x 8" x 7" - 8" x 8" x 8"

Available Gauges: STD



Cold Air Return Fittings

930

Cold Air Frame

Size Range: 10" x 4" - 30" x 12"

Available Gauges: 26 28 STD



931

Cold Air Frame without Tabs

Size Range: 11¾" x 11¾" - 23¾" x 11¾"

Available Gauges: 26 28 STD



Duct & Duct Fittings

Cold Air Drop Kits

704

Top Load Cold Air Drop Kit

Size Range: 12" x 25" - 25" x 14"

Available Gauges:



705

Top Load Cold Air Drop Kit

Size Range: 10" x 25" - 25" x 14"

Available Gauges:

706

Top Load Cold Air Drop Kit

Size Range: 10" x 20" - 20" x 16"

Available Gauges:

707

Top Load Cold Air Drop Kit

Size Range: 10" x 24" - 24" x 16"

Available Gauges:

708

Top Load Cold Air Drop Kit

Size Range: 10" x 25" - 25" x 16"

Available Gauges:

709

Cold Air Drop Kit Side Load

Size Range: 20" x 10" - 20" x 16"

Available Gauges:

710

Cold Air Drop Kit Side Load

Size Range: 24" x 10" - 24" x 16"

Available Gauges:

711

Cold Air Drop Kit Side Load

Size Range: 24" x 10" - 25" x 16"

Available Gauges:

712

Cold Air Drop Kit Side Load

Size Range: 25" x 10" - 25" x 16"

Available Gauges:

713

Cold Air Drop Kit Side Load

Size Range: 24" x 8" - 24" x 16"

Available Gauges:

714

Cold Air Drop Kit Side Load

Size Range: 20" x 8" - 20" x 16"

Available Gauges:

716

Cold Air Drop Kit Side Load

Size Range: 25" x 10" - 25" x 14"

Available Gauges:

719

Top Load Cold Air Drop Kit

Size Range: 20" x 10" - 20" x 14"

Available Gauges:

720

Cold Air Drop Kit Side Load

Size Range: 20" x 10" - 20" x 14"

Available Gauges:

721

Canvas Connector Drop Kit with Dual 1-2" Racks

Size Range: 20" x 10" - 20" x 16"

Available Gauges:



722

Canvas Connector Drop Kit with Dual 1-2" Racks

Size Range: 24" x 10" - 20" x 16"

Available Gauges:



730

Side Load Cold Air Drop Kit

Size Range: 24" x 10" - 24" x 14"

Available Gauges:



FilterLock® is a two-piece system designed to seal a 1" filter slot. Built-in magnets hold it securely to metal duct work. Use with any 1" air filter up to 25" long.



Before

After

Don't fail another inspection

Added benefits:

- Retrofit product which can be added to existing or new applications.
- Great add-on product offering for service agreement or seasonal tune-up appointments.

Wall Stack

Wall Stack

Wall Stack

152

Wall Stack

Size Range: 2¼" x 10" x 24" - 3¼" x 14" x 101"

Available Gauges: **STD** WALL STACK WIDTH + HEIGHT CANNOT EXCEED 40" TOTAL



Stack Heads

927

Stackhead with Ears 9" Throat

Size Range: 2¼" x 10" x 4" - 3¼" x 14" x 6"

Available Gauges: **STD**



ASK FOR SEALED

905

STD

Stackhead

Size Range: 2¼" x 10" x 6" - 2¼" x 12" x 6" / 3¼" x 10" x 6" - 3¼" x 12" x 6" / 3¼" x 14" x 6"



917

STD

Stackhead without Ears 9" Throat

Size Range: 3¼" x 8" x 6" - 3¼" x 14" x 6"



926

STD

Stackhead 7" Throat

Size Range: 2¼" x 10" x 6" - 3¼" x 12" x 6"



928

STD

Stackhead 12" Throat

Size Range: 2¼" x 10" x 6" - 3¼" x 14" x 6"



935

STD

Double Stackhead 1½" Flange 3" Throat

Size Range: 3¼" x 10" x 4" - 3¼" x 14" x 8"



Stack Boots

575

Elbow Stack Boot

Size Range: 2¼" x 10" x 5" - 3¼" x 14" x 8"

Available Gauges: **STD**



ASK FOR SEALED

571

STD

Center End Stack Boot

Size Range: 2¼" x 10" x 4" - 3¼" x 14" x 8"



572

STD

Straight Stack Boot

Size Range: 2¼" x 10" x 5" - 3¼" x 14" x 8"



590

STD

Left End Stack Boot

Size Range: 2¼" x 10" x 6" - 3¼" x 14" x 6"



591

STD

Right End Stack Boot

Size Range: 2¼" x 10" x 6" - 3¼" x 14" x 6"



Stack Accessories

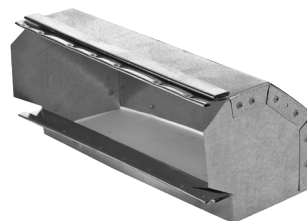
105

ASK FOR SEALED

Shortway Elbow 90°

Size Range: 2¼" x 10" - 3¼" x 14"

Available Gauges: **STD**



100

STD

Shortway Angle 45°

Size Range: 2¼" x 10" - 3¼" x 14"



210

STD

Flat Angle

Size Range: 2¼" x 10" - 3¼" x 14"



215

STD

Flat Elbow

Size Range: 2¼" x 10" - 3¼" x 14"



229

STD

End Cap

Size Range: 2¼" x 10" - 3¼" x 14"



230

STD

Starting Collar

Size Range: 2¼" x 10" - 3¼" x 14"



Galvanized Spiral Pipe & Fittings

Galvanized Spiral Pipe

8101

Spiral Pipe

Size Range: 3" - 32" Plain or Ribbed Available

Available Gauges: 22 24 26 GALV



BUILT TO SMACNA STANDARDS

Galvanized Spiral Fittings

8021

Spiral Cap

Size Range: 4" - 30"

Available Gauges: 24 26



8012

Start Collar Spiral with Crimp

Size Range: 14" x 32"



082

Pipe EZ Hanger

Size Range: 4" - 30"



8221

Spin In Collar

Size Range: 4" - 20"



8424

Spiral Tee No Crimp

Size Range: 4" - 24"



8641

Spiral Wye

Size Range: 6" x 6" x 4" - 6" x 6" x 6"



8932

Perimeter Saddle

Size Range: 4"x10"x5" Round - 22"x30"x24" Round



Galvanized Spiral Reducers

8431

Available Gauges: 24 26

Tapered Reducer without Crimp

Size Range: 5" x 4" - 32" x 30"



8434

Available Gauges: 22 24 26

Spiral Eccentric Reducer

Size Range: 6" x 5" - 26" x 22"



Galvanized Spiral Take Offs

8601

Perimeter Saddle Tee

Size Range: 4" on 6" - 22" on 26"

Available Gauges: 24 26



ASK FOR SEALED

8603

Saddle Tee with Gasket

Size Range: 4" on 6" - 9" - 18" on 24" - 28"



8604

Saddle Tee with Gasket & Damper

Size Range: 4" on 6" - 9" - 18" on 24" - 28"



8605

Spiral Shoe Tap

Size Range: 4" on 4" - 6" - 16" on 22" - 26"



Galvanized Spiral Elbows

8150

Spiral Elbow

Available Gauges: 24 26

Size Range: 4" - 24"



8151

Spiral Angle

Available Gauges: 24 26

Size Range: 4" - 30"



ECC

CL 90 degree Spiral Elbow

Size Range: 1 1/2" - 4" - 20"

Available Gauges: 20 24



ECC

CL 45 degree Spiral Elbow

Size Range: 1 1/2" - 4" - 20"

Available Gauges: 20 24



Galvanized Spiral Connectors

8993

Available Gauges: 24 26

Spiral Connector

Size Range: 3" - 32"



Galvanized Spiral

PVC Spiral Pipe & Fittings

PVC Spiral

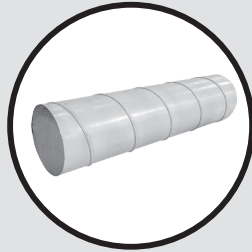
PVC Spiral Pipe

9101

PVC Spiral Pipe

Size Range: 3" - 32" Plain or Ribbed Available

Available Gauges: **22** **24** **26**



PVC Spiral Elbows

9150

PVC Spiral Elbow

Size Range: 4" - 24"

Available Gauges: **24** **26**



9151

PVC Spiral Angle

Size Range: 4" - 30"

Available Gauges: **24** **26**



PVC Start Collars

9012

PVC Start Collar with Crimp

Size Range: 4" - 22"

Available Gauges: **22** **24** **26**



PVC Spiral Boots

9249

PVC Elbow Boot

Size Range: 2 1/4" x 10" x 4" - 6" x 14" x 8"

Available Gauges: **26**



9772

PVC Straight Boot

Size Range: 2 1/4" x 12" x 6" - 4" x 14" x 8"

Available Gauges: **26**



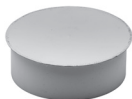
PVC Spiral Fittings

9021

PVC Cap

Size Range: 4" - 28"

Available Gauges: **24** **26**



9747

PVC Register Pan No Flanges

Size Range: 6" x 10" x 7" - 6" x 14" x 8"



Available Gauges: **26**

9993

PVC Spiral Connector

Size Range: 3" - 30"

Available Gauges: **24** **26**



PVC Reducers

9431

PVC Tapered Reducer without Crimp

Size Range: 6" x 4" - 26" x 22"



Available Gauges: **24** **26**

9434

PVC Eccentric Reducer

Size Range: 6" x 4" - 24" x 22"

Available Gauges: **24** **26**



PVC Spiral Tees & Wyes

9601

PVC Perimeter Saddle Tee

Size Range: 4" on 6" - 14" on 16"



Available Gauges: **24** **26**

9605

PVC Spiral Shoe Tap

Size Range: 4" on 4" - 6" - 16" on 22" - 26"

Available Gauges: **24** **26**



9641

PVC Wye

Size Range: 4" x 4" x 4" - 8" x 8" x 8"

Available Gauges: **26**



9424

PVC Spiral Tee No Crimp

Size Range: 4" - 24"

Available Gauges: **24** **26**



Commercial Take-Offs & Boots with Radiation Dampers

Commercial Take-Offs

8240

Side Take-Off with Damper

Size Range: 4" x 8" x 4" - 20" x 26 x 22"

Available Gauges: 24 26



ASK FOR SEALED

8241

Side Take-Off

Size Range: 4" x 8" x 4" - 18" x 28" x 20"



8244

Center Take-Off with Damper

Size Range: 6" - 20"



8245

Center Take-Off

Size Range: 4" - 20"



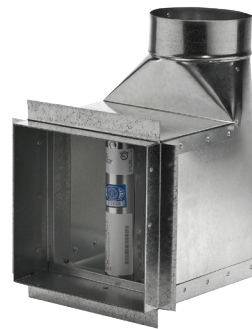
Boots w/ Radiation Dampers

259CRD

Elbow Boot 90° with Ceiling Radiation Damper

Size Range: 4" x 8" x 4" - 8" x 14" x 10"

Available Gauges: 28 STD



ASK FOR SEALED

471CRD

Side Ceiling Box with Radiation Damper

Size Range: 6" x 6" x 4" - 14" x 14" x 8", 9" & larger 28GA



772CRD

Straight Boot with Ceiling Radiation Damper

Size Range: 4" x 8" x 4" - 4" x 14" x 8", 9" & larger 28GA



747CRD

Straight Boot with Ceiling Radiation Damper

Size Range: 6" x 10" x 5" - 10" x 10" x 6"



Side Take-Offs

240

Side Take-Off with Damper

Size Range: 4" x 8" x 4" - 16" x 22" x 18"

Available Gauges: 26



ASK FOR SEALED

241

Side Take-Off

Size Range: 4" x 8" x 4" - 16" x 22" x 18"



242

Side Take-Off with Damper

Size Range: 6" x 7" x 4" - 10" x 20" x 14"



243

Side Take-Off

Size Range: 6" x 7" x 6" - 16" x 18" x 16"



121

Side Take-Off

Size Range: 4" - 16"



123

Side Take-Off

Size Range: 4" - 18"



EVERY Fire Damper is UL Approved!

- ▶ Available from 4" x 8" x 4" through 6" x 14" x 10" with 6" extension and lower profiles.
- ▶ Multiple fire ratings are available upon request.

Commercial Take-Offs & Boots with Radiation Dampers

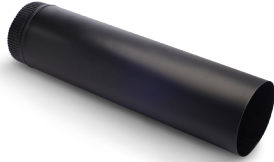
Stove Pipe & Fittings

Available Gauge: 24

101B

Black Pipe

Size Range: 5" - 9"



24

010B

Black Trim Collar

Size Range: 6" - 8"



24

150B

Black Elbow

Size Range: 4" - 8"



24

015B

Black Drawband

Size Range: 6" - 8"



24

021B

Black Tee Cover with Crimp

Size Range: 6" - 8"



24

022B

Black Tee Cover without Crimp

Size Range: 5" - 8"



24

825B

Black Tee

Size Range: 6" x 6" x 6"
- 7" x 7" x 7" - 8" x 8" x 8"



24

030B

Black Slip Connector

Size Range: 6" x 12", 7" x 12", 8" x 12",
6" x 18", 7" x 18", 8" x 18"



24

031B

Black Flue Cover

Size Range: 6" - 9"



24

430B

Black In increaser with Crimp

Size Range: 5" x 6" - 6" x 7"
- 6" x 8" - 7" x 8" - 8" x 9"



24

431B & 432B

Black Reducer

431B without crimp
432B with crimp on large end

Size Range: 5" x 4" - 6" x 5"
- 7" x 6" - 8" x 6" - 8" x 7"
- 10" x 8"



24

597B

Black Oval Straight Boot

Size Range: 5" - 10"



24

Round, Oval & Spiral Pipe Rack Quantities

Round Pipe Rack Quantities

Size	Gauge(s)	Style	Quantity
3x24	Std	bdl	1000
3x24	28/26	bdl	500
4x24	Std	bdl	700
4x24	28/26	bdl	440
4x24	24	bdl	350
5x24	Std	bdl	700
5x24	26	bdl	540
5x24	24	bdl	270
6x24	Std	bdl	500
6x24	26	bdl	400
6x24	24	bdl	450
6x24	24 Black	bdl	480
7x24	Std	bdl	350
7x24	26/24	bdl	350
8x24	Std	bdl	260
8x24	26/24	bdl	240
8x24	24 Black	bdl	240
9x24	26/24	bdl	240
10x24	Std	bdl	200
10x24	26	bdl	200
12x24	Std	bdl	150
12x24	28/26/24	bdl	150
14x24	28/26/24	bdl	160
16x24	26/24	bdl	120
18x24	26/24	bdl	90

Size	Gauge(s)	Style	Quantity
8x48	28	bdl	120
16x48	28/26	bdl	45
18x48	26ga	bdl	30
20x48	26ga	bdl	30
3x60	Std	ctn	630
3x60	Std	bdl	880
3x60	26ga	bdl	880
4x60	Std	ctn	480
4x60	Std	bdl	650
4x60	28/26	bdl	350
5x60	Std/Econo	ctn	350
5x60	Std/Econo	bdl	590
5x60	26	bdl	295
6x60	Std/Econo	ctn	300
6x60	Std	bdl	440
6x60	Econo	bdls	280
6x60	24	bdl	200
6x60	26	bdl	300
7x60	Std	ctn	240
7x60	Std/28/26	bdl	320
8x60	Std	ctn	200
8x60	Std/28/26	bdl	240
8x60	24	bdl	120
9x60	Std	ctn	200

Size	Gauge(s)	Style	Quantity
9x60	Std	bdl	210
9x60	28	bdl	160
9x60	26	bdl	105
10x60	Std	ctn	120
10x60	Std	bdl	180
10x60	28/26/24	bdl	90
12x60	Std	bdl	120
12x60	28/26/24	bdl	60
14x60	28/26/24	bdl	45
3x120	Std	bdl	540
4x120	Std	bdl	175
5x120	Std/Econo	bdl	295
6x120	Std/Econo	ctn	150
6x120	Std	bdl	220
6x120	Econo	bdl	140
7x120	Std	ctn	150
7x120	Std	bdl	160
8x120	Std	bdl	120

Oval Pipe Rack Quantities

Size	Gauge(s)	Style	Quantity
5x60	Std	bdl	300
6x60	Std	ctn	180
6x60	Std	bdl	250
7x60	Std	ctn	155
7x60	Std	bdl	200
8x60	Std	bdl	180

Size	Gauge(s)	Style	Quantity
4x100	Std/Econo	bdl	375
5x100	Std/Econo	bdl	375
5x100	Std/Econo	ctn	200
5x100	Std/Econo	bdl	330
6x100	Std/Econo	ctn	180
6x100	Std/Econo	bdl	250
7x100	Std	ctn	155
7x100	Std	bdl	200
8x100	Std	bdl	180

Size	Gauge(s)	Style	Quantity
5x112	Econo	bdl	330
6x112	Econo	bdl	250
7x112	Std	bdl	200
8x112	Std	bdl	180
5x114	Std	bdl	330
6x114	Std	bdl	250
7x114	Std	bdl	200
8x114	Std	bdl	180

Spiral Pipe Rack Quantities

Size	Gauge(s)	Style	Quantity
4	26ga	pkg	108
6	26ga	pkg	48
8	26ga	pkg	24
10	26ga	pkg	15
12	26ga	pkg	12

Size	Gauge(s)	Style	Quantity
14	26ga	pkg	8
16	24/22ga	pkg	4
18	24/22ga	pkg	3
20	24/22ga	pkg	2
22	24/22ga	pkg	1

Size	Gauge(s)	Style	Quantity
24	24/22ga	pkg	1
26	24/22ga	pkg	1
28	24/22ga	pkg	1
30	22ga	pkg	1
32	22ga	pkg	1

Product Index

Item No.	Page	Item No.	Page	Item No.	Page
ECC CL 90 degree Spiral Ecco Elbow	19	044 Ductboard Snap Collar	13	111 Oval Pipe	7
ECC CL 45 degree Spiral Ecco Elbow	19	045 Ductboard Snap Collar Assembled	13	112 Trunk Adapter	15
001 Flat 45° Duct Angle	15	046 Ductboard Snap Collar Assembled with Damper	13	114C Center Transition Collar	16
002 Flat 90° Duct Elbow	15	049 Ductboard Snap Collar with 1" Ring	13	117 Reducing Adapter	15
003 Vertical 45° Duct Angle	15	055 Exhaust Vent with Damper	5	121 Side Take-Off	21
004 Vertical 90° Duct Elbow	15	060 Universal Boot	15	123 Side Take-Off	21
005 Duct End Cap	16	068 Filter Rack Side Load	16	124 Start Collar with 4" Body	13
006 Reverse End Cap	16	069 Filter Box Top Load	16	125 Start Collar with 4" Body & Damper	13
007 Trunk Tap Start Collar	16	070 Cold Air Boot (Top Load)	15	126 Start Collar with 6" Body	13
009 Trunk Reducer	15	072 Return Air Box with 1" Filter Rack	12	127 Start Collar with 6" Body & Damper	13
010B Black Trim Collar	22	072 Return Air Box with 5" Filter Rack	12	128 Damper Section	5
011 Duct Damper	5	073 Return Air Box	16	129 Start Collar with 6" Body Scoop & Damper	13
012 Start Collar with Crimp	13	074 Return Air Support Box	16	130 Take-Off with Gasket	14
013 Start Collar without Crimp	13	075 Filter Frame with Screw Holes	16	131 Take-Off with Gasket and Damper	14
014 Ductboard Start Collar with Crimp & Bead	13	076 Cold Air Boot (Side Load)	15	132 Side Take-Off with 0" Rise	14
015 Drawband	5	079 Bridging Strip Hanger	5	133DB Ductboard Take-Off with 1" Rise	13
015B Black Drawband	22	080 Adjustable Pipe Hangers	5	133 Take-Off with 1" Rise	14
016 Drawband with Bolts	5	081 Duct Hanger	15	134 Take-Off with 2" Rise	14
017 Unassembled Dampers	5	082 Pipe EZ Hanger	19	136 Adjustable Round Take-Off	14
018 Assembled Dampers	5	086 Canvas Connector	16	136DB Adjustable Round Take-Off with 1" Rise	13
019 Volume Damper	5	091 Flat 45° Duct Angle Square Throat	15	137 Plenum Take-Off with Gasket	14
020 Ductboard Start Collar with Damper, Crimp & Bead	13	092 Flat 90° Duct Elbow 2-1/2" Square Throat	15	146 Steel Stack Collar Triple Tabs	13
021 Tee Cap with Crimp	5	093 Vertical 45° Duct Angle Square Throat	15	147 Steel Stack Collar Triple Tabs with Damper	13
021B Black Tee Cover with Crimp	22	094 Vertical 90° Duct Elbow 2-1/2" Square Throat	15	150 90° Elbows	4
022 Tee Cap without Crimp	5	100 Shortway Angle 45°	18	150B Black Elbow	22
022B Black Tee Cover without Crimp	22	101 Round Pipe	4	151 45° Angles	4
024 Rain Cap	4	101 USP Round Pipe	5	152 Wall Stack	18
025 Ductboard Start Collar with Scoop & Damper	13	101B USP Round Pipe	5	153 Rectangular Duct	15
030B Black Slip Connector	22	101B Black Pipe	22	155 Oval Flat Elbow	7
031B Black Flue Cover	22	105 Shortway Elbow 90°	18	156 Oval Vertical Elbow	7

Product Index

Item No.	Page	Item No.	Page	Item No.	Page
157 Oval Flat Angle	7	242 Side Take-Off with Damper	21	400 4-Piece Knockdown Plenum with Top	9
158 Oval Vertical Angle	7	243 Side Take-Off	21	401 Straight Tee	5
163 Double Take-Off	14	259CRD Elbow Boot 90° with Ceiling Radiation Damper	21	410 Plenum Top	9
172 Transformer	5	259 Elbow Boot	10	412 Insulated Coil Box	15
200 2-Piece Plenum with Top	9	269 Basement Ceiling Boot	10	420 Plenum Side	9
201 Reducing Tee	5	272 Insulated Box with Flange	12	422 Wye Branch	7
210 Flat Angle	18	273 Insulated Box with Flange & Gasket	12	424 Tee	5
211 Flowtite with Wide Flange	14	274 Insulated Side Out Box	16	425 Wye	7
212 Flowtite with Wide Flange with Damper	14	275 Insulated Side Out Box with Gasket	16	430 Tapered Reducer	4
215 Flat Elbow	18	276 Insulated Box with Duct Board Top	12	430B Black Increaser with Crimp	22
217 Flowtite Plain	14	277 Insulated Box With Duct Board Top & Gasket	12	431 Tapered Reducer/Increaser without Crimp	4
218 Flowtite with Damper	14	279 Elbow Boot with 25" Rails	10	431B Black Reducer without Crimp	22
219 Flowtite with Scoop	14	280 Straight Boot with 25" Rails	10	432 Tapered Increaser	4
221 Twist-In Collar	14	289 Elbow Boot with 16" Rail	10	432B Black Reducer with Crimp on Large End	22
222 Twist-In Collar with Damper	14	290 Lever Lock Takeoff	13	441 Low Profile Reducer	4
223 Twist-In Collar with Scoop	14	291 Pivot Lock Take-Off	13	450 Shortway Reducer	4
224 Twist In Collar with Scoop & Damper	14	292 Half Tab Take-Off with Crimp	13	451 Shortway Reducer/Increaser without Crimp	4
225 Ductboard Twist-In Collar	14	293 Adjustable Take-Off with 2" Rise	13	452 Shortway Increaser	4
226 Ductboard Twist-In Collar with Damper	14	297 Elbow Flowtite	13	470 Top Ceiling Box	11
227 Ductboard Twist-In Collar with Scoop	14	298 EZ Turn Ductboard Take-Off	13	471 Side Ceiling Box	11
228 Ductboard Twist-In Collar with Scoop & Damper	14	299 EZ Turn Take-Off	13	471CRD Side Ceiling Box w/Radiation Damper	21
229 End Cap	18	301 Tee	5	472 6" Blind Floor Box	11
230 Starting Collar	18	310 Adjustable Plenum Top	9	473 12" Blind Floor Box	11
231 Tapered Twist-In Collar	14	312 Manual Holder	16	474 Ceiling Head with Ears	11
232 Tapered Twist-In Collar with Damper	14	320 Adjustable Plenum with Top	9	478 Square to Round Transition	11
234 Tapered Twist-In Collar with Scoop & Damper	14	344 Ductboard Snap Collar with Sealant	13	485 Oval Side Ceiling Box	8
235 Conical Flowtite Plain	14	345 Ductboard Snap Collar Assembled with Sealant	13	496 Ceiling Diffuser Elbow	11
236 Conical Flowtite with Damper	14	348 Ductboard Snap Collar with Scoop, Damper and Sealant	13	498 Tapered Diffuser 17" Plate	11
240 Side Take-Off with Damper	21	365 Top Take-Off with 1" Rise	13	500 Plenum with Removable Front Panel with Top	9
241 Side Take-Off	21			512 Oval Start Collar	7

Product Index

Item No.	Page	Item No.	Page	Item No.	Page
513 Oval Start Collar without Crimp	7	597B Black Oval Straight Boot	22	745 Register Pan with Recessed Flanges	11
514 Boot Rail 26"	12	603 Saddle Tee with Gasket	14	746 Register Pan with Recessed Flanges & Ears	11
515 Standing S Cleat	15	604 Saddle Tee with Gasket & Damper	14	747CRD Straight Boot with Ceiling Radiation Damper	21
516 S Cleat	15	641 Wye Branch	7	747 Register Pan No Flanges	11
517 Drive Cleat	15	642 Wye Branch	7	748 Square to Round Transition	11
518 Joist Panning	16	643 Wye Branch	7	772CRD Straight Boot with Ceiling Radiation Damper	21
519 Start Collar	16	671 End Boot	10	772 Straight Boot	10
529 Wye Branch	5	681 Left End Boot	10	773 Oval Straight Boot	8
530 Wye Branch	5	691 Right End Boot	10	825 Full Flow Tee	7
571 Center End Stack Boot	18	700 Drive Cleat	15	825B Black Tee	22
572 Straight Stack Boot	18	704 Top Load Cold Air Drop Kit	17	905 Stackhead	18
573 Tapered 90° Round To Oval Boot	7	705 Top Load Cold Air Drop Kit	17	917 Stackhead without Ears 9" Throat	18
574 Round To Oval 90° Boot	7	706 Top Load Cold Air Drop Kit	17	923 Plaster Frame without Clips	12
575 Elbow Stack Boot	18	707 Top Load Cold Air Drop Kit	17	925 Stackhead 3-1/2" Throat	20
576 Oval To Round 90° Tapered Boot	7	708 Top Load Cold Air Drop Kit	17	926 Stackhead 7" Throat	18
578 Oval To Round 90° Boot	7	709 Side Load Cold Air Drop Kit	17	927 Stackhead with Ears 9" Throat	18
579 Round To Oval 45° Boot	7	710 Side Load Cold Air Drop Kit	17	928 Stackhead 12" Throat	18
580 Oval Adapter	8	711 Side Load Cold Air Drop Kit	17	929 Snap-On Rail	12
581 Oval Adapter with Crimp	8	712 Side Load Cold Air Drop Kit	17	930 Cold Air Frame	16
582 45° Oval Register Box	8	713 Side Load Cold Air Drop Kit	17	931 Cold Air Frame without Tabs	16
583 90° Oval Register Box	8	714 Side Load Cold Air Drop Kit	17	935 Double Stackhead 1-3/8" Flange 3-1/2" Throat	18
585 Round To Oval Boot 90° No Crimp	7	716 Side Load Cold Air Drop Kit	17	966 Oval Stackhead with Ears 7" Throat	8
586 Oval End Boot	7	719 Top Load Cold Air Drop Kit	17	967 Oval Stackhead with Ears 9" Throat	8
587 Oval Straight Boot	7	720 Side Load Cold Air Drop Kit	17	968 Oval In-line Register Box 9" Throat	8
588 Oval Reverse Boot	8	721 Canvas Connector Drop Kit	17	969 Oval Double Stackhead 9" & 12" Throat	8
589 Oval Fire Stop	8	722 Canvas Connector Drop Kit	17	970 Hanging Strap	5
590 Left End Stack Boot	18	730 Side Load Cold Air Drop Kit	17	984 Storm Collar	5
591 Right End Stack Boot	18	721 Canvas Connector Drop Kit with Dual 1-2" Racks	17	987 Oval Stackhead 12" Throat	8
593 90° Oval Toe Kick Boot	8	722 Canvas Connector Drop Kit with Dual 1-2" Racks	17	988 Oval In Line Register 12" Throat	8
594 Toekick with Brackets	11	744 Register Pan with 1" Flanges	11	993 Flex Connector with Crimp	5

Product Index

Item No.	Page	Item No.	Page
994 Flex Connector with 6" Body	5	9431 PVC Tapered Reducer without Crimp	20
997 Angles	15	9434 PVC Eccentric Reducer	20
8012 Start Collar Spiral with Crimp	19	9601 PVC Perimeter Saddle Tee	20
8021 Spiral Cap	19	9605 PVC Spiral Shoe Tap	20
8101 Spiral Pipe	19	9641 PVC Wye	20
8150 Spiral Elbow	19	9747 PVC Register Pan No Flanges	20
8151 Spiral Angle	19	9772 PVC Straight Boot	20
8221 Spin In Collar	19	9993 PVC Spiral Connector	20
8235 Conical Flowtite	14	FILTERLOCK	17
8236 Conical Flowtite with Damper	14		
8240 Side Take-Off with Damper	21		
8241 Side Take-Off Plain	21		
8244 Center Take-Off with Damper	21		
8245 Center Take-Off	21		
8424 Spiral Tee No Crimp	19		
8431 Tapered Reducer without Crimp	19		
8434 Spiral Eccentric Reducer	19		
8601 Perimeter Saddle Tee	19		
8603 Saddle Tee with Gasket	19		
8604 Saddle Tee with Gasket & Damper	19		
8605 Spiral Shoe Tap	19		
8641 Spiral Wye	19		
8932 Perimeter Saddle	19		
8993 Spiral Connector	19		
9012 PVC Start Collar with Crimp	20		
9021 PVC Cap	20		
9101 PVC Spiral Pipe	20		
9150 PVC Spiral Elbow	20		
9151 PVC Spiral Angle	20		
9249 PVC Elbow Boot	20		
9424 PVC Spiral Tee No Crimp	20		



325 Commerce Drive, Mt. Vernon, OH 43050
Phone: 740-397-8842 Toll Free: 800-253-8236
Fax: 740-392-5352

356 West Main Street, Byesville, OH 43723



www.hc-products.com



[youtube.com/hcp](https://www.youtube.com/hcp)



[facebook.com/hcp](https://www.facebook.com/hcp)



[linkedin.com/hcp](https://www.linkedin.com/hcp)



Available upon Request