

SUBMITTAL DATA SHEET



Series Name: Electric Heater
Model Number: EAH-10D(UL)

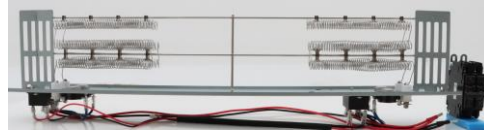
Heater

Location: _____
Engineer: _____
Submitted to: _____
Submitted by: _____
Reference: _____

Approval: _____
Date: _____
Construction: _____
Unit #: _____
Drawing #: _____

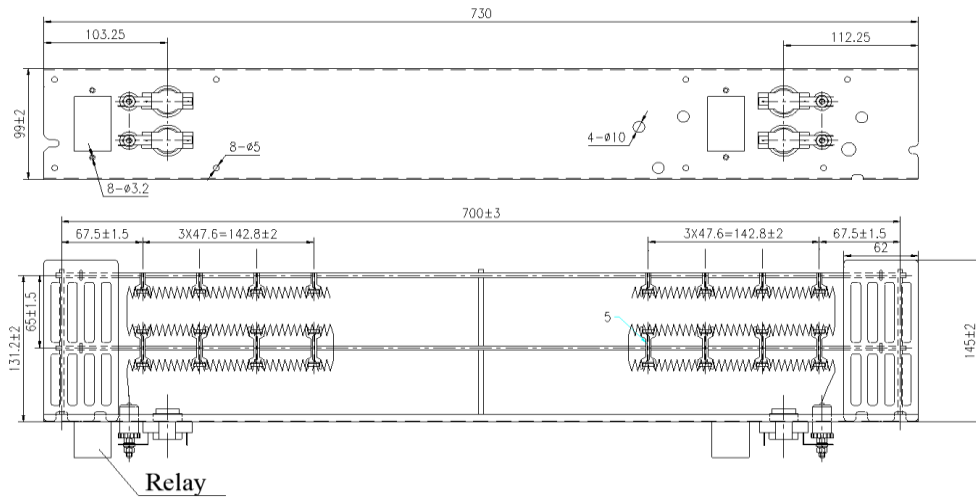
SPECS

| | | |
|----------------------------|----------------|----------------------|
| Code | 22013201000021 | |
| Model | EAH-10D(UL) | |
| Normal Operational Voltage | (V, Ph, Hz) | 208/230, 1, 60 |
| Current | A | 36.5/40.0 |
| Heat Power | kW | 7.40/9.00 |
| MCA | A | 46.0/50.0 |
| MAX. FUSE | A | 50.0/50.0 |
| Heater dimension | mm | 730 x 99 x 190 |
| | inch | 28.74 x 3.90 x 7.48 |
| Packaging dimension | mm | 805 x 315 x 165 |
| | inch | 31.69 x 12.40 x 6.50 |
| Net Weight | kg | 1.8 |
| | lbs | 4.0 |
| Gross Weight | kg | 4.6 |
| | lbs | 10.14 |



Heater dimension

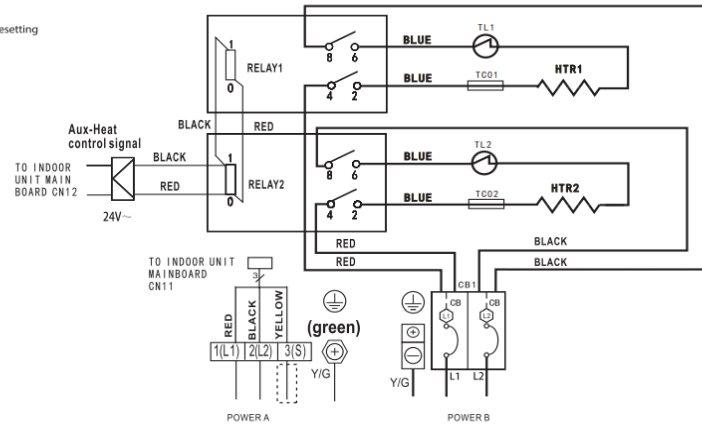
unit: Inch (mm)



Wiring diagram

3KW/5KW/8KW/10KW HEAT KIT

—: thermal cut-out
—: thermal link, self-resetting



NOTE 1: This symbol indicates the element is optional. The wiring type of the actual unit shall prevail.
NOTE 2: Please attach the nameplate to the cover of the electric control box. Please refer to the Installation Manual for details.
NOTE 3: TO BE WIRED IN ACCORDANCE WITH NEC AND LOCAL CODES.

NOTE 4: POWER A, B, C, D ARE DIFFERENT POWERS.

The wiring mode of power supply A shall be based on the type of original wiring terminal of AHU; for type A, S position must be connected to the outdoor S; for type B, S position shall not be connected.

