

# SUBMITTAL DATA SHEET



Series Name: Electric Heater  
Model Number: EAH-05D(UL)

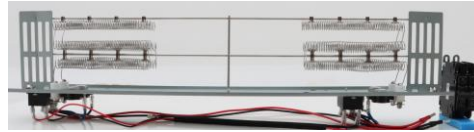
## Heater

Location: \_\_\_\_\_  
Engineer: \_\_\_\_\_  
Submitted to: \_\_\_\_\_  
Submitted by: \_\_\_\_\_  
Reference: \_\_\_\_\_

Approval: \_\_\_\_\_  
Date: \_\_\_\_\_  
Construction: \_\_\_\_\_  
Unit #: \_\_\_\_\_  
Drawing #: \_\_\_\_\_

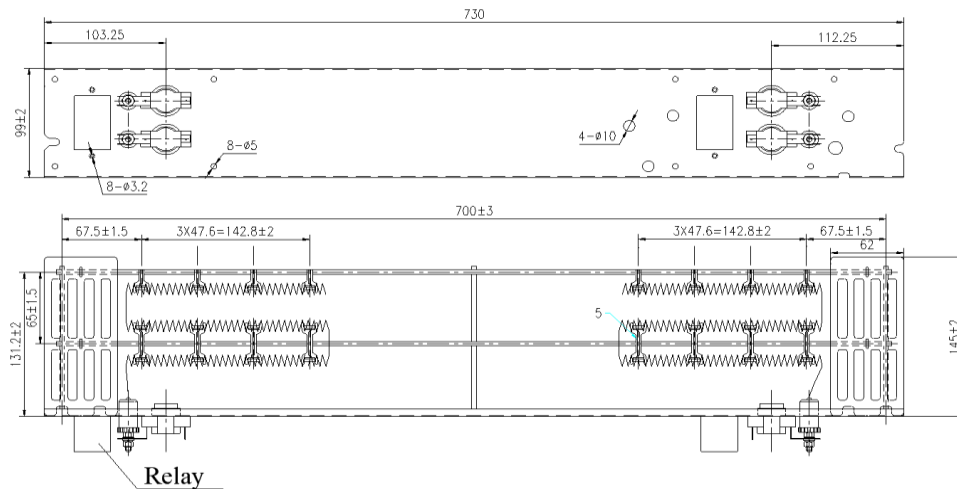
## SPECS

Code	22013201000002	
Model	EAH-05D(UL)	
<b>Normal Operational</b>		
Voltage	(V, Ph, Hz)	208/230, 1, 60
Current	A	18.5/20.0
Heat Power	kW	3.76/4.54
MCA	A	23.5/25.0
MAX. FUSE	A	25.0/30.0
<b>Heater dimension</b>		
	mm	730 x 99 x 190
	inch	28.74 x 3.90 x 7.48
<b>Packaging dimension</b>		
	mm	805 x 315 x 165
	inch	31.69 x 12.40 x 6.50
<b>Net Weight</b>		
	kg	1.8
	lbs	4.0
<b>Gross Weight</b>		
	kg	4.6
	lbs	10.14





## Heater dimension

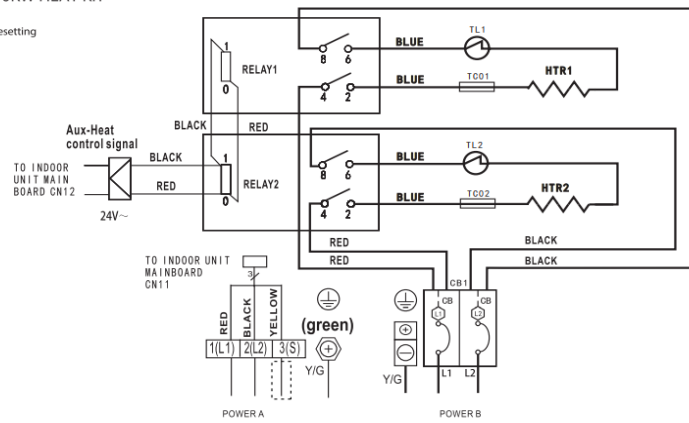
unit: Inch (mm)



## Wiring diagram

### 3KW/5KW/8KW/10KW HEAT KIT

-  thermal cut-out
-  thermal link, self-resetting



#### NOTE 1:

This symbol indicates the element is optional. The wiring type of the actual unit shall prevail.

#### NOTE 2:

Please attach the nameplate to the cover of the electric control box. Please refer to the Installation Manual for details.

#### NOTE 3:

TO BE WIRED IN ACCORDANCE WITH NEC AND LOCAL CODES.

#### NOTE 4:

POWER A, B, C, D ARE DIFFERENT POWERS.

The wiring mode of power supply A shall be based on the type of original wiring terminal of AHU; for type A, S position must be connected to the outdoor S; for type B, S position shall not be connected.

