



MODA™ ICE MAKER OUTLET BOX TECHNICAL SPECIFICATION

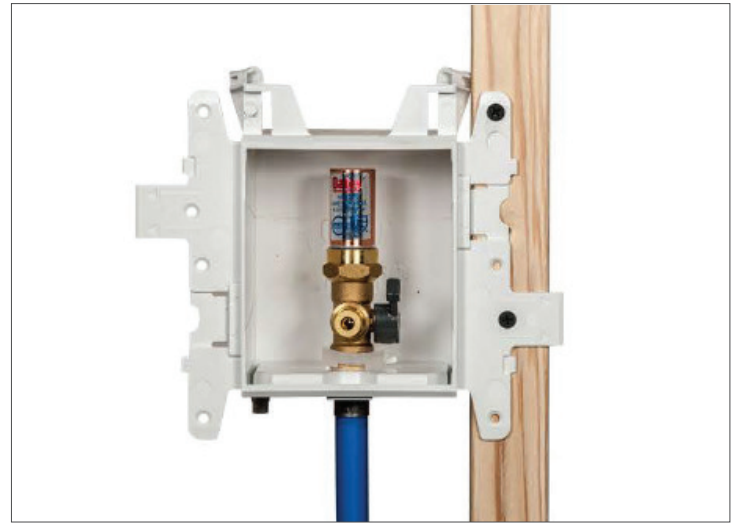
Job Name _____	Item # _____
Location _____	
Engineer _____	Contractor _____
PO # _____	Tag _____
Representative _____	

SPECIFICATIONS

Oatey MODA™ ice maker supply boxes shall be used in residential or commercial applications requiring a supply valve recessed in the wall. The MODA™ ice maker box assembly contains a 1/4" OD compression valve pre-installed in a PVC box, with inter-locking wing flanges on each side. The wing flanges shall allow installation on a single stud, or between two studs using the included side brackets. No additional components shall be required for a between stud installation. Valves shall be a two-piece design, permitting field replacement, and shall be secured with a stainless steel retention clip. Valves are available with or without water hammer arrestors and shall be installed upright or inverted. The assembly shall include an emergency drain port for protection from tubing leaks.

APPROVALS & LISTINGS

Valves	ASME A112.18.1 / CSA B125.1 NSF / ANSI 61 & 372
Water Hammer Arrestors	ASSE 1010
Boxes	IAPMO-Listed, PS-54



Accessory Components Included:



Side Brackets (2)



Faceplate



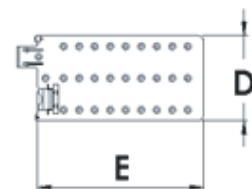
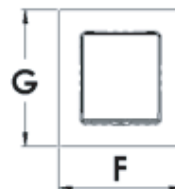
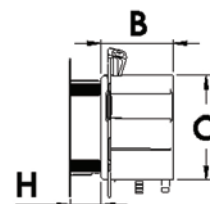
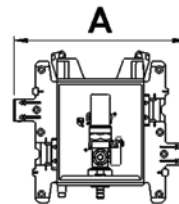
Sticker Cover
(For Debris Protection)

FEATURES & MATERIALS

Outlet Box & Brackets	PVC
Valve Body	Forged Brass C46500 No Lead
Valve Retention Clip	Stainless Steel
Valve O-Rings Approved EPDM (2)	NSF/FDA Approved EPDM (2)
Temperature Rating (Valve)	250° F / 121° C
Max Testing Pressure (Valve)	125 psi

DIMENSIONS

[A]:	Box Width	8.00"	[E]:	Bracket Length	8.00"
[B]:	Box Height	3.38"	[F]:	Faceplate Width	6.00"
[C]:	Box Depth	4.85"	[G]:	Faceplate Height	6.45"
[D]:	Bracket Width	4.00"	[H]:	Faceplate Depth	1.25"



Access BIM/Revit content through www.oatey.com



MODA™ ICE MAKER OUTLET BOX TECHNICAL SPECIFICATION

PRODUCT SELECTOR

✓	Product Number	Description	Ctn. Qty.
NO HAMMER ARRESTORS			
	37679	MODA Ice Maker, Copper (Male), Standard	12
	37695	MODA Ice Maker, Copper (Male), Contractor	12
	37681	MODA Ice Maker, F1807 PEX (Brass), Standard	12
	37697	MODA Ice Maker, F1807 PEX (Brass), Contractor	12
	37683	MODA Ice Maker, F1960 PEX (Brass), Standard	12
	37699	MODA Ice Maker, F1960 PEX (Brass), Contractor	12
	37680	MODA Ice Maker, CPVC (Female), Standard	12
	37696	MODA Ice Maker, CPVC (Female), Contractor	12
	37686	MODA Ice Maker, Push Connect, Standard	12
HAMMER ARRESTORS			
	37687	MODA Ice Maker, Copper (Male), Standard	12
	37703	MODA Ice Maker, Copper (Male), Contractor	12
	37689	MODA Ice Maker, F1807 PEX (Brass), Standard	12
	37705	MODA Ice Maker, F1807 PEX (Brass), Contractor	12
	37691	MODA Ice Maker, F1960 PEX (Brass), Standard	12
	37707	MODA Ice Maker, F1960 PEX (Brass), Contractor	12
	37688	MODA Ice Maker, CPVC (Female), Standard	12
	37704	MODA Ice Maker, CPVC (Female), Contractor	12
	37694	MODA Ice Maker, Push Connect, Standard	12

Standard packs shipped with faceplates on boxes, contractor packs ship with faceplates packaged separately.

Access BIM/Revit content through www.oatey.com