

## SUBMITTAL SHEET

### Project Information

Job Name:

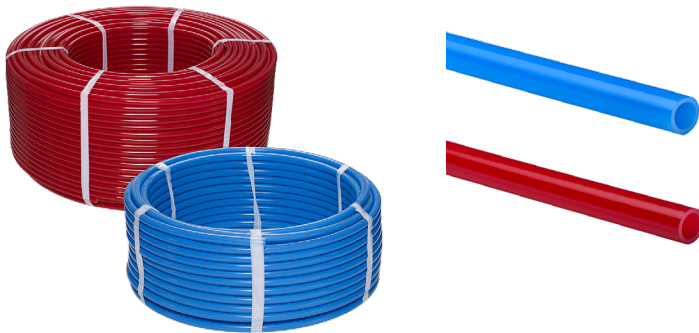
Location:

Engineer:

Contractor:

P.O. Number:

Representative:



### COIL TUBING

Model	ID	Size	Color
S3312100B-PEXA-5306	.3632499	1/2" x 100'	Blue
S3312100R-PEXA-5306	.3632500	1/2" x 100'	Red
S3312300R-PEXA-5306	.3632510	1/2" x 300'	Red
S3312300B-PEXA-5306	.3632511	1/2" x 300'	Blue
S3312500R-PEXA-5306	.3632522	1/2" x 500'	Red
S3312500B-PEXA-5306	.3632523	1/2" x 500'	Blue
S33121000R-PEXA-5306	.3632519	1/2" x 1000'	Red
S33121000B-PEXA-5306	.3632520	1/2" x 1000'	Blue
S3334100R-PEXA-5306	.3632502	3/4" x 100'	Red
S3334100B-PEXA-5306	.3632503	3/4" x 100'	Blue
S3334300R-PEXA-5306	.3632513	3/4" x 300'	Red
S3334300B-PEXA-5306	.3632514	3/4" x 300'	Blue
S331100R-PEXA-5306	.3632505	1" x 100'	Red
S331100B-PEXA-5306	.3632506	1" x 100'	Blue
S331300R-PEXA-5306	.3632516	1" x 300'	Red
S331300B-PEXA-5306	.3632521	1" x 300'	Blue

### STRAIGHT TUBING

Model	ID	Size	Color
S331220R-PEXA-5306	.3632487	1/2" x 20'	Red
S331220B-PEXA-5306	.3632488	1/2" x 20'	Blue
S333420R-PEXA-5306	.3632490	3/4" x 20'	Red
S333420B-PEXA-5306	.3632491	3/4" x 20'	Blue
S33120R-PEXA-5306	.3632493	1" x 20'	Red
S33120B-PEXA-5306	.3632494	1" x 20'	Blue

### FEATURES

- Best-in-class UV resistance for reliable installations (5306)
- Durable pipe to withstand job site conditions
- Efficient to install; long coils reduce waste
- No flame, glues or fumes required to install
- Lightweight and compact for shipping, hauling and hanging
- Resists kinking, even below freezing temperatures
- 160 PSI @ 73.4° F
- 100 PSI @ 180° F
- Meets or exceeds the following:
  - NSF/ANSI/CAN 61
  - NSF/ANSI/CAN 372
  - NSF/ANSI 14
  - ASTM F1960/F2159/F876/F877
  - CSA B137.5
  - Meets chlorine resistant requirements of ASTM 876 when tested in accordance with F2023



### WARRANTY

25-Year warranty. Visit [stream33.com](http://stream33.com) for details.



Nominal Pipe Size	Average OD "A" (in)	Wall Thickness "B" (in)	Weight (lb/ft)	Capacity (gal/ft)
1/2"	0.625	0.070	0.06	0.0092
3/4"	0.875	0.097	0.10	0.0184
1"	1.125	0.125	0.2	0.0303
1-1/4"	1.375	0.153	0.34	0.0453
1-1/2"	1.625	0.181	0.44	0.0632
2"	2.125	0.236	0.682	0.1083

Maximum Pressure & Temperatures
160 PSI @ 73.4° F (1055 kPa @ 23° C)
100 PSI @ 180° F (690 kPa @ 82.2° C)
80 PSI @ 200° F (550 kPa @ 93.3° C)

\* Stream33 defines Elevated Temperature Applications as those with operating conditions greater than 180° F (82.2° C). When Stream33 PEX-A Pipes are planned to be operated in Elevated Temperature Applications, contact Stream33 to verify your project conditions comply with the Stream33 PEX-A Pipe Limited Warranty.

## UV RESISTANCE

Stream33 PEX-A Pipe (Red & Blue) has been tested and certified for a maximum exposure time of 6 months.

**CAUTION:** Do not store Stream33 PEX unprotected outdoors. Keep Stream33 PEX tubing in the original packaging or under protective cover until time of installation and ensure that exposure to sunlight during installation does not exceed the maximum recommended UV exposure time of 6 months.

Specification	English	Standard
Tensile Strength	3191 PSI @ 68° F	-
Roughness	0.00028 in	-
Max. Operating Temperature	203° F	-
Max. Short-term Exposure	150 PSIG @ 210° F (48 hr)	ASTM 876
UV Resistance	Class 3 – minimum of 6 months UV Resistance	ASTM F876
Min. Density	59 lb/ft <sup>3</sup>	ASTM F876
Min. Degree of Crosslinking	70%	ASTM F876
Max. Thermal Conductivity	2.16 BTU in/(ft <sup>2</sup> ° F hr)	DIN 16892
Coefficient of Linear Expansion	1.73 x 10 <sup>-4</sup> in/ft° F @ 68° F	DIN 16892
Modulus of Elasticity	116,030 PSI @ 68° F	DIN 16892

## FITTING COMPATIBILITY

For potable water applications, ensure that the fitting system is certified to NSF/ANSI 61 and complies with the lead-free requirements of the U.S. Safe Drinking Water Act.

Stream33 PEX-A pipe has been tested and found to be compatible with the following fitting systems:

**ASTM F1960 cold expansion fittings**

**ASTM F1807 crimp fittings**

**ASTM F2159 plastic insert crimp fittings**