

SUBMITTAL DATA SHEET

breeze33

Series Name: J Series
Model Number: BZ33-INV18OUT2-454-G3-J / BZ33-INVAHU18-454-G3-J

Air Handler Heat Pump System	
Location:	Approval:
Engineer:	Date:
Submitted to:	Construction:
Submitted by:	Unit #:
Reference:	Drawing #:



INDOOR SPECIFICATION	
ESP(in.W.G)	0-0.8
Indoor Air Flow (Turbo/H/M/L/Si) (CFM)	618.0 / 576.8 / 529.7 / 488.5 / N/A
Indoor Noise Level (Turbo/H/M/L/Si) (dBA)	N/A/41/39/33/N/A
Dimension(WxDxH)	inch 17-1/2 x 21 x 45
	mm 444.5 x 533.4 x 1143 mm
Package(WxDxH)	inch 26-9/16 x 20-7/8 x 48-5/8
	mm 675x530x1235
Net/Gross Weight	lbs 105.82/126.76
	kg 48/57.5

OUTDOOR SPECIFICATION	
Compressor Type	ROTARY
Compressor Model	KTM240D46UKT2
Refrigerant	R454B
Refrigerant Oil Charge(mL)	620
Refrigerant Oil	VG74
Outdoor Air Flow (Max) (CFM)	1765.744556
Outdoor Noise Level (dBA)	59
Dimension(WxDxH)	inch 35-1/16 x 13-7/16 x 26-1/2
	mm 890.0x342.0x673.0
Package(WxDxH)	inch 39-3/16 x 15-11/16 x 29-1/8
	mm 995x398x740
Net/Gross Weight	lbs 101.41/109.13
	kg 46/49.5

EFFICIENCY			
Cooling		Heating	
SEER2	19	HSPF2-4	9.7
EER2	12.5	COP	3.2

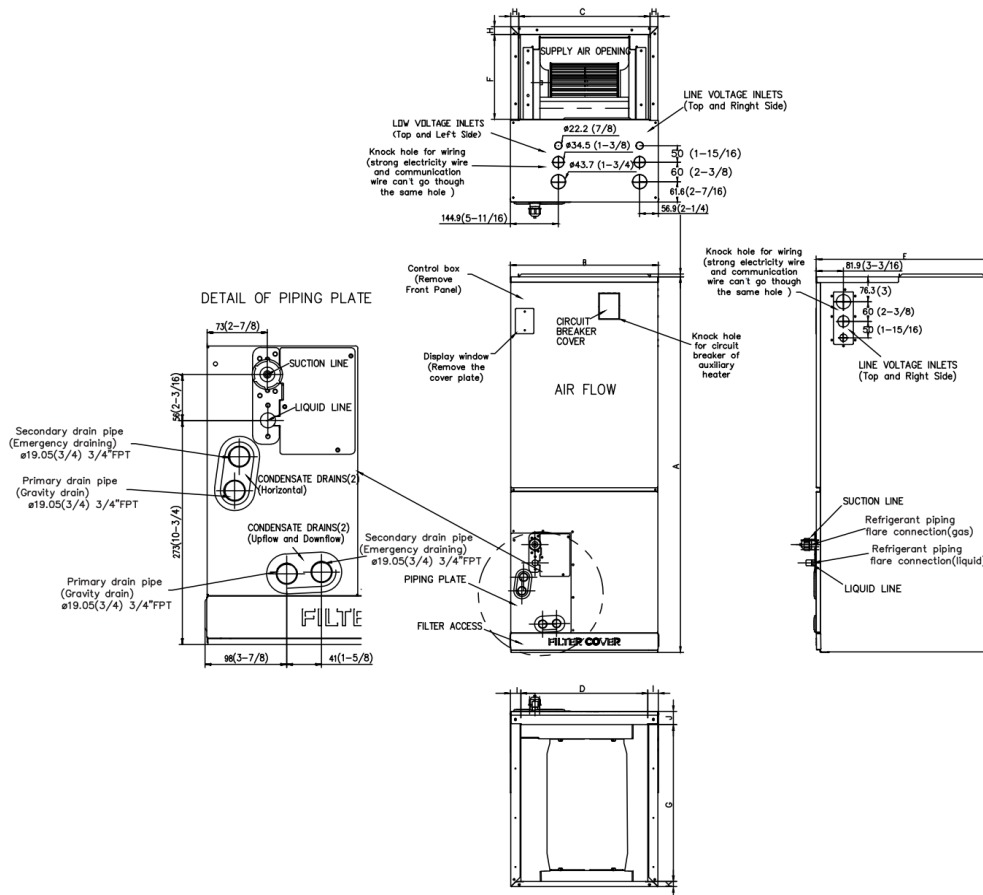
PERFORMANCE of Cooling	
Cooling (Btu/hr)	
Rated Capacity	18000
Min/Max Capacity	5600~22000
Moisture Removal(L/h)	1.65
Standard Operating Range(°F/°C)	-22~122(-30~50)
Rated Cooling Conditions:	Indoor: 80°F DB/67°F WB Outdoor: 95°F DB/75°F WB

PERFORMANCE of Heating	
Heating (Btu/hr)	
1. @ 47°F Rated	19000
1. @ 47°F Min/Max Capacity	6000~22000
2. @ 17°F Rated	15000
3. @ 5°F Rated: Capacity / COP	18000/2
3. @ 5°F Max: Capacity	18000
Standard Operating Range(°F/°C)	-22~75(-30~24)
1. Rated Heating Conditions:	Indoor: 70°F DB/60°F WB Outdoor: 47°F DB/43°F WB
2. Rated Heating Conditions:	Indoor: 70°F DB/60°F WB Outdoor: 17°F DB/15°F WB
3. Heating Conditions, Compressor Operating at Max. Frequency	Indoor: 70°F DB/60°F WB Outdoor: 5°F DB/5°F WB

ELECTRICAL	
Indoor Power Supply	115/208/230V,60Hz,1Ph
Indoor MCA 115V/(208/230V)	5.5/4.0
Indoor MOP	15
Outdoor Power Supply	208/230V,60Hz,1Ph
Outdoor MCA	16
Outdoor MOP	20
Communication Wiring	AWG 20-2
Compressor RLA	10.5
Outdoor Fan Motor RLA	0.9
Outdoor Fan Motor W	80
Indoor Fan Motor RLA	2
Indoor Fan Motor W	250
System Power Input @ Cooling (W)	1445(440 ~ 1950)
System Power Input @ Heating (W)	1740(500 ~ 1950)
MCA: Min. circuit amps (A)	MOCP: Max. over current protection (A)
RLA: Rated load amps (A)	W: Fan motor rated output (W)

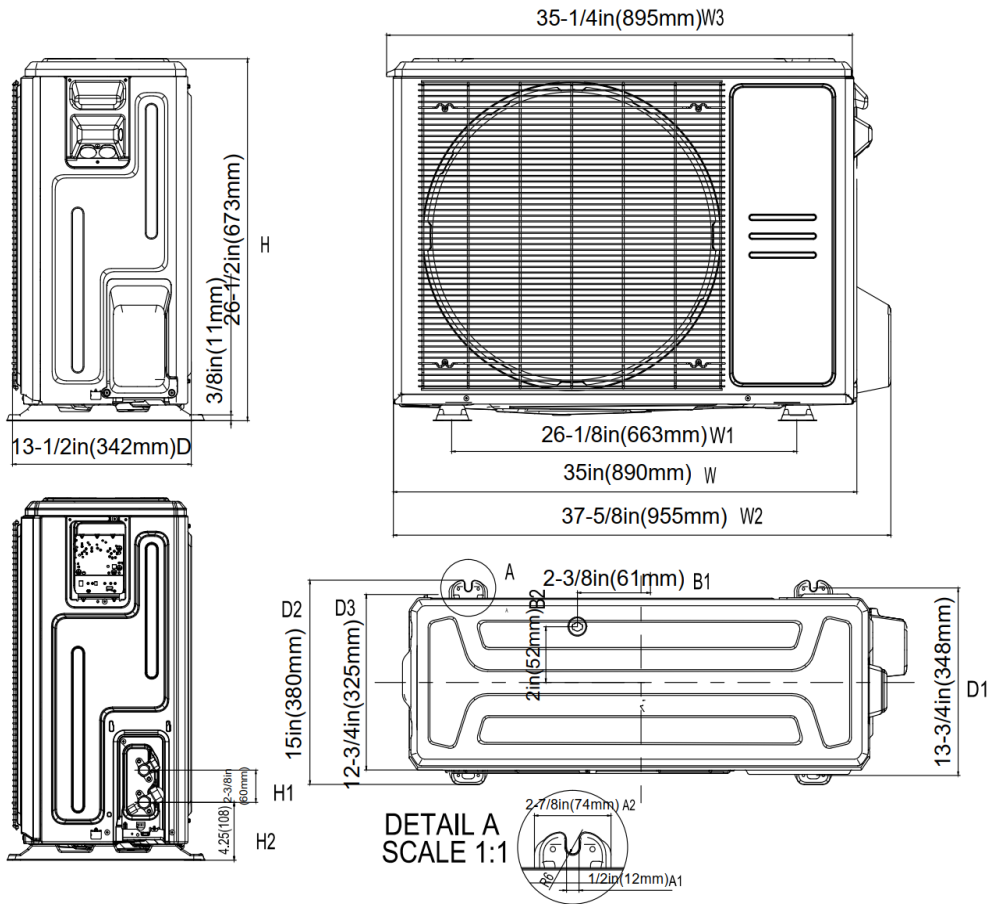
PIPING	
Throttle type(Indoor)	EXV
Throttle type(Outdoor)	EXV
Liquid Size	9.52mm(3/8in)
Gas Size	19mm(3/4in)
Max. Piping Length(ft/m)	98.4(30)
Max. Height Difference(ft/m)	65.6(20)
Max. Pre-charged Length(ft/m)	24.6(7.5)
Refrigerant Pre-charged Amount(oz/kg)	74.08(2.1)
Additional Charge of Refrigerant(oz/ft)/(g/m)	0.7(65)
Connection Method	Flared

Indoor Unit Dimension

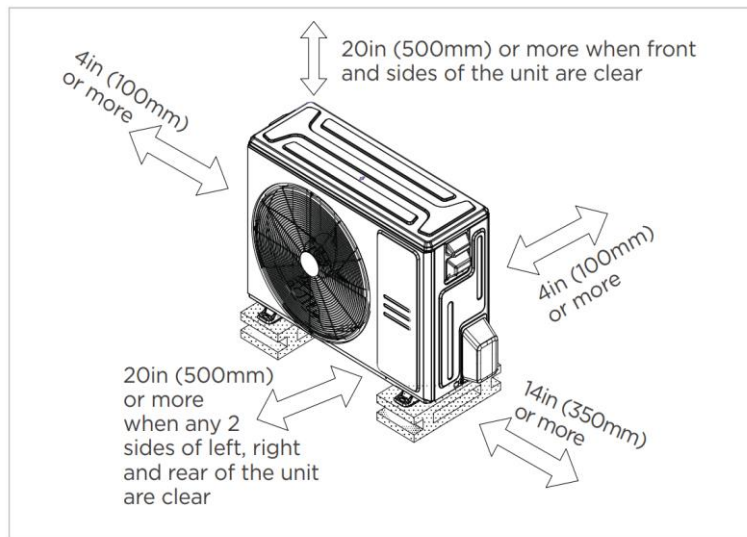


Dimensions		Model		18k/24k		30k/36k		48k/60k	
				inch	mm	inch	mm	inch	mm
A	Model Height			45	1143	49	1245	53	1346
B	Model Width			17-1/2	445	21	534	24-1/2	622
C	Supply Air Opening Width			15-5/8	397	19-1/8	486	22-5/8	575
D	Return Air Opening Width			15-1/8	384	18-5/8	473	22-1/8	562
E	Model Depth			21	534	21	534	21	534
F	Supply Air Opening Depth			10-1/4	260	10-1/4	260	10-1/4	260
G	Return Air Opening Depth			18-3/4	476	18-3/4	476	18-3/4	476
H	Supply Air Opening Clearance			15/16	24	15/16	24	15/16	24
I	Return Air Opening Side Clearance			1-1/4	32	1-1/4	32	1-1/8	28
J	Return Air Opening Front Clearance			1-1/2	38	1-5/8	41	1-5/8	41
K	Return Air Opening Back Clearance			5/8	16	5/8	16	3/4	19

Outdoor Unit Dimension

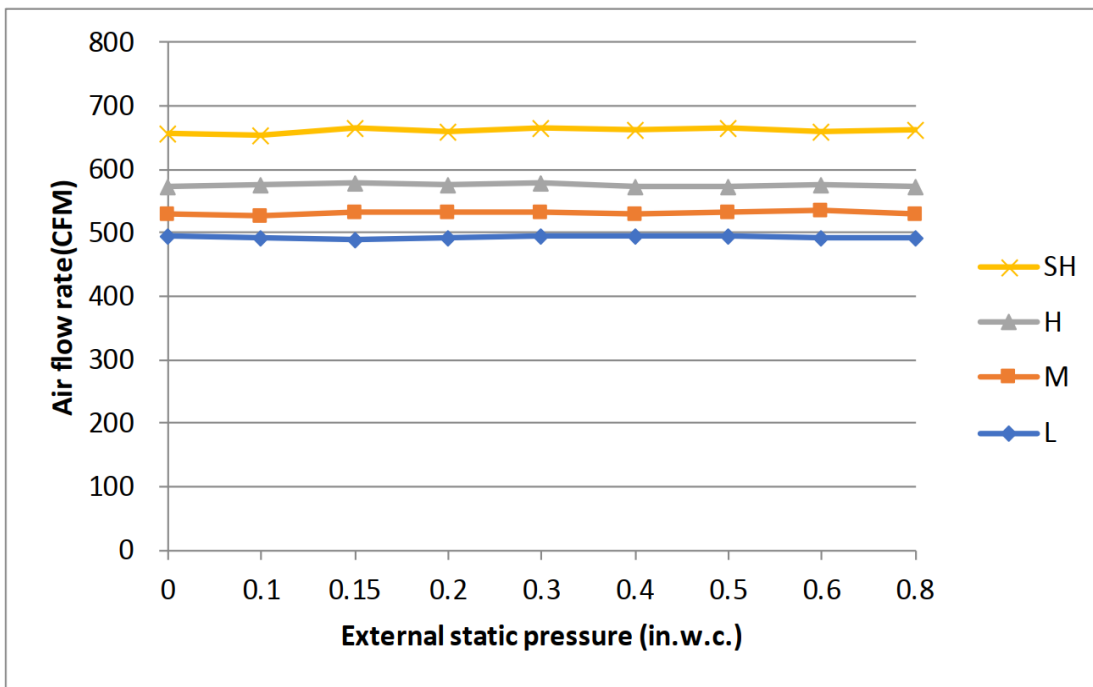


Installation Instruction For Outdoor Unit



Meets all spatial requirements shown in Installation Clearance Requirements above.

Fan Performance For Indoor Unit



Features

- Multi-position installation: horizontal(left or right), vertical(up or down)
- Aluminum Coil
- Constantly Air Flow system up to 0.80 In.W.G
- 1 inch R4.2 fiberglass free insulation reduces condensation and boosts efficiency(optional)
- Optional Auxiliary heat kit up to 25kW
- Easy Maintenance
- Multiple control options available:
 - Two way communication wired controller:120N(X6)
 - Two way communication wired controller with built-in WiFi:120N(X6W)
 - Wireless remote controller
 - Third-Party 24V Thermostat
- Adaptive Control System
- High efficiency up to 19 SEER2, 12.5 EER2, 10.3 HSPF2
- 100% heat output at -4F*
- Chassis heater and crankcase heater equipped as standard

* For 36K model, rated cooling capacity/heating capacity at -4F=100%