

SUBMITTAL DATA SHEET

Series Name: Premier Series

Model Number: BZ33-HYP24OUT2-454-G3-P / BZ33-MSAHU24-454-G3-P

breeze33

Air Handler Heat Pump System

| | |
|---------------|---------------|
| Location: | Approval: |
| Engineer: | Date: |
| Submitted to: | Construction: |
| Submitted by: | Unit #: |
| Reference: | Drawing #: |



INDOOR SPECIFICATION

| | |
|---|-----------------------------------|
| Indoor Air Flow (Turbo/H/M/L/Si) (CFM) | 824.0 / 759.3 / 694.5 / 629.8 / - |
| Indoor Noise Level (Turbo/H/M/L/Si) (dBA) | N/A/43.5/40/25.5/N/A |
| Dimension(WxDxH) | inch |
| | mm |
| Package(WxDxH) | inch |
| | mm |
| Net/Gross Weight | lbs |
| | kg |

OUTDOOR SPECIFICATION

| | |
|------------------------------|---------------|
| Compressor Type | ROTARY |
| Compressor Model | KTM240D46UKT2 |
| Refrigerant | R454B |
| Refrigerant Oil Charge(mL) | 620 |
| Refrigerant Oil | VG74 |
| Outdoor Air Flow (Max) (CFM) | 2236.7 |
| Outdoor Noise Level (dBA) | 61.5 |
| Dimension(WxDxH) | inch |
| | mm |
| Package(WxDxH) | inch |
| | mm |
| Net/Gross Weight | lbs |
| | kg |

EFFICIENCY

| Cooling | | Heating | |
|---------|------|---------|-----|
| SEER2 | 18.7 | HSPF2-4 | 10 |
| EER2 | 12 | COP | 3.5 |

PERFORMANCE of Cooling

| Cooling (Btu/hr) | |
|---------------------------------|---|
| Rated Capacity | 23000 |
| Min/Max Capacity | 7500~27000 |
| Moisture Removal(L/h) | 2.25 |
| Standard Operating Range(°F/°C) | -22~122(-30~50) |
| Conditions: | Indoor: 80°F DB/67°F WB Outdoor: 95°F DB/75°F WB |

PERFORMANCE of Heating

| Heating (Btu/hr) | |
|---------------------------------|---|
| 1. @ 47°F Rated | 26000 |
| 1. @ 47°F Min/Max Capacity | 8800~29000 |
| 2. @ 17°F Rated | 16900 |
| 3. @ 5°F Rated: Capacity / COP | 23600/2.1 |
| 3. @ 5°F Max: Capacity | 23600 |
| Standard Operating Range(°F/°C) | -22~75(-30~24) |
| 1. Conditions: | Indoor: 70°F DB/60°F WB Outdoor: 47°F DB/43°F WB |
| 2. Conditions: | Indoor: 70°F DB/60°F WB Outdoor: 17°F DB/15°F WB |
| 3. Conditions: | Indoor: 70°F DB/60°F WB Outdoor: 5°F DB/5°F WB |

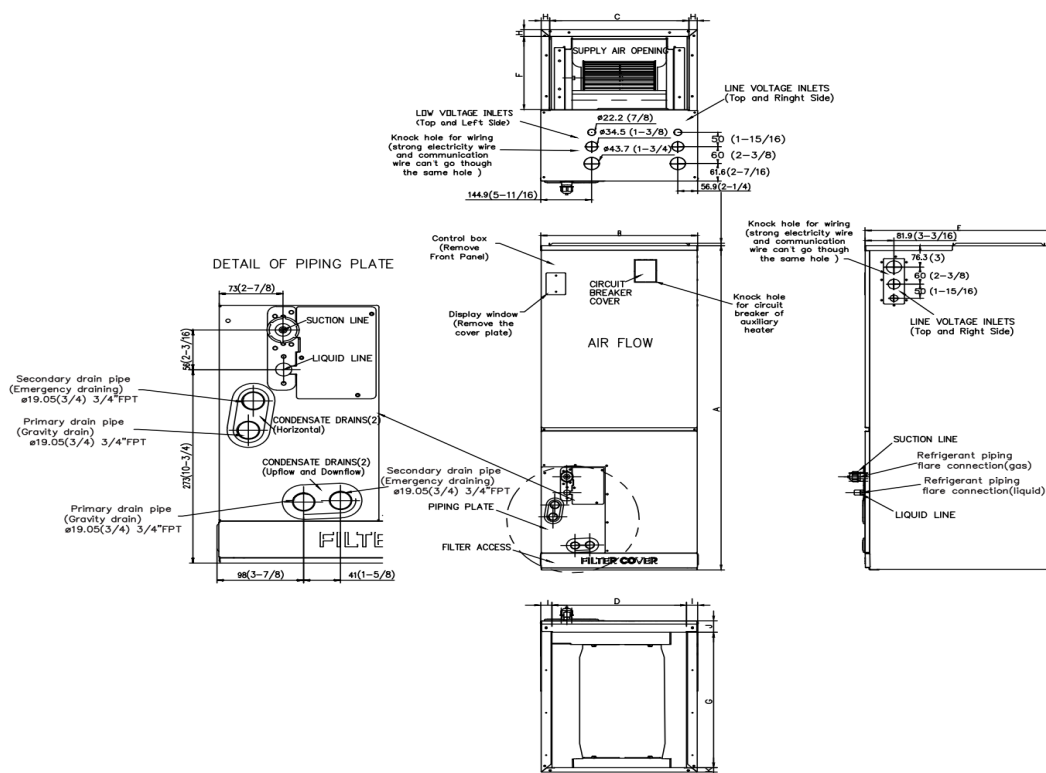
ELECTRICAL

| | |
|----------------------------------|--|
| Power Supply | 208/230V, 60Hz, 1Ph |
| System MCA | 24.9 |
| Connection Wiring | AWG 14-4 |
| System MOCP | 25 |
| Compressor RLA | 15 |
| Outdoor Fan Motor RLA | 1.3 |
| Outdoor Fan Motor W | 120 |
| Indoor Fan Motor RLA | 3 |
| Indoor Fan Motor W | 250 |
| System Power Input @ Cooling (W) | 1916(280 ~ 2600) |
| System Power Input @ Heating (W) | 2180(410 ~ 2600) |
| MCA: Min. circuit amps (A) | MOCP: Max. over current protection (A) |
| RLA: Rated load amps (A) | W: Fan motor rated output (W) |

PIPING

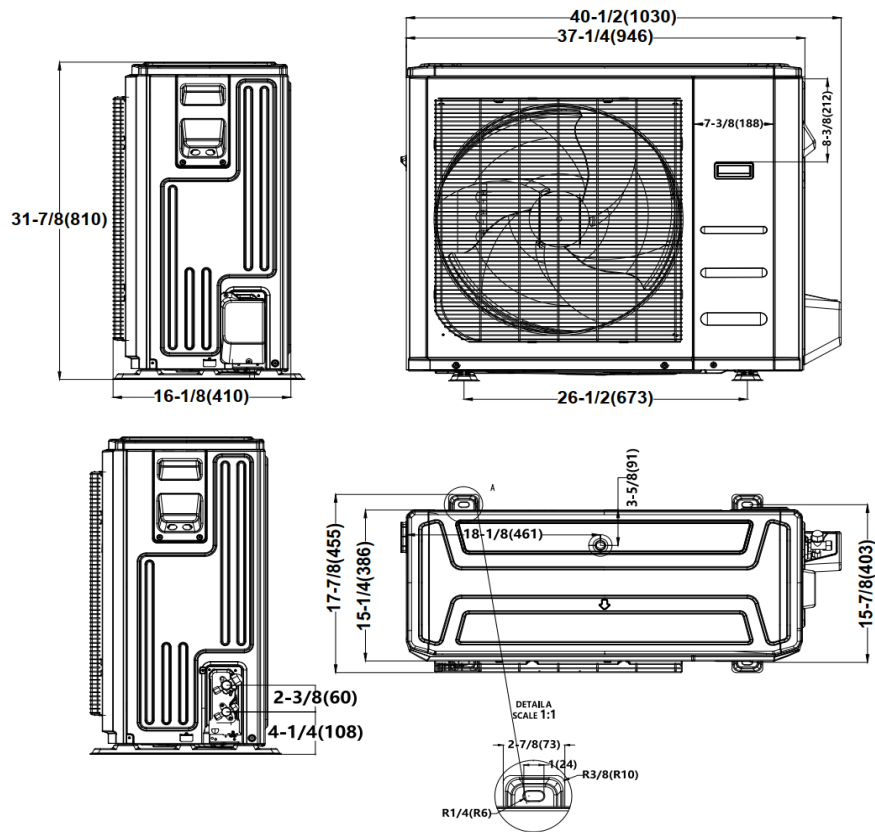
| | |
|---|--------------------|
| Throttle type(Indoor) | N/A |
| Throttle type(Outdoor) | EXV+Throttle valve |
| Liquid Size | 9.52mm(3/8in) |
| Gas Size | 15.9mm(5/8in) |
| Max. Piping Length(ft/m) | 164(50) |
| Max. Height Difference(ft/m) | 82(25) |
| Max. Pre-charged Length(ft/m) | 24.6(7.5) |
| Refrigerant Pre-charged Amount(oz/kg) | 63.49(1.8) |
| Additional Charge of Refrigerant((oz/ft)/(g/m)) | 0.32(30) |
| Connection Method | Flared |

Indoor Unit Dimension

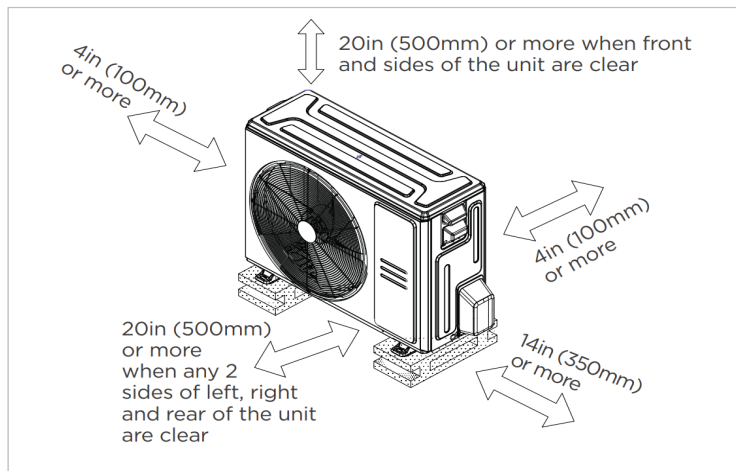


| Dimensions | Model | 18k/24k | | 30k/36k | | 48k/60k | |
|------------|------------------------------------|---------|------|---------|------|---------|------|
| | | inch | mm | inch | mm | inch | mm |
| A | Model Height | 45 | 1143 | 49 | 1245 | 53 | 1346 |
| B | Model Width | 17-1/2 | 445 | 21 | 534 | 24-1/2 | 622 |
| C | Supply Air Opening Width | 15-5/8 | 397 | 19-1/8 | 486 | 22-5/8 | 575 |
| D | Return Air Opening Width | 15-1/8 | 384 | 18-5/8 | 473 | 22-1/8 | 562 |
| E | Model Depth | 21 | 534 | 21 | 534 | 21 | 534 |
| F | Supply Air Opening Depth | 10-1/4 | 260 | 10-1/4 | 260 | 10-1/4 | 260 |
| G | Return Air Opening Depth | 18-3/4 | 476 | 18-3/4 | 476 | 18-3/4 | 476 |
| H | Supply Air Opening Clearance | 15/16 | 24 | 15/16 | 24 | 15/16 | 24 |
| I | Return Air Opening Side Clearance | 1-1/4 | 32 | 1-1/4 | 32 | 1-1/8 | 28 |
| J | Return Air Opening Front Clearance | 1-1/2 | 38 | 1-5/8 | 41 | 1-5/8 | 41 |
| K | Return Air Opening Back Clearance | 5/8 | 16 | 5/8 | 16 | 3/4 | 19 |

Outdoor Unit Dimension

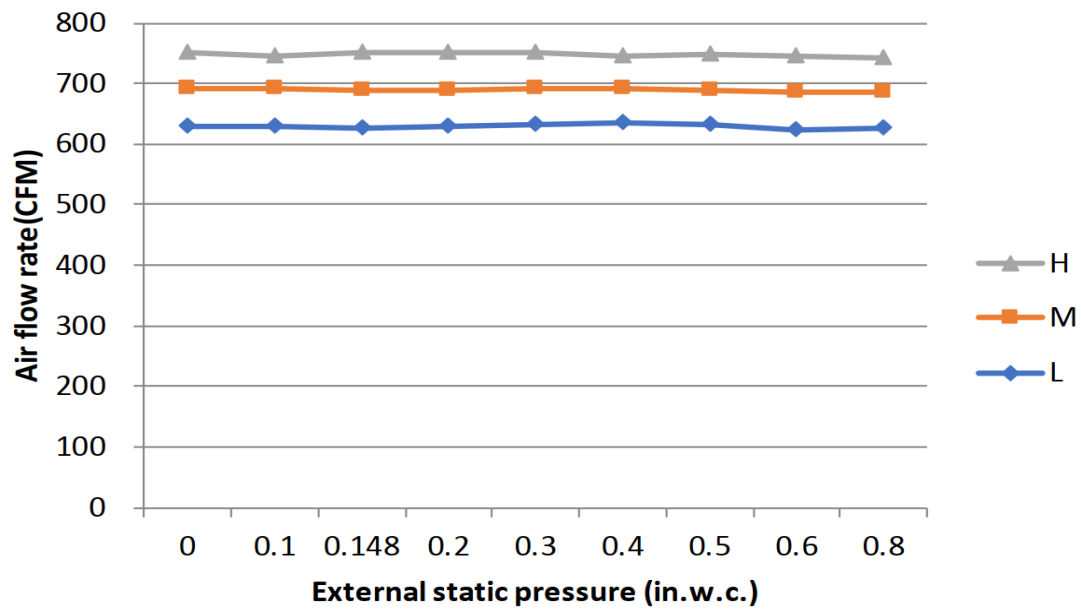


Installation Instruction



☒ Meets all spatial requirements shown in Installation Clearance Requirements above.

Fan Performance For Indoor Unit



Features

- Multi-position installation: horizontal(left or right), vertical(up or down)
- Aluminum Coil
- Constantly Air Flow system up to 0.80 In.W.G
- 1 inch R4.2 fiberglass free insulation reduces condensation and boosts efficiency(optional)
- Optional Auxiliary heat kit up to 25kW
- Easy Maintenance
- Multiple control options available:
 - Two way communication wired controller:120N(X6)
 - Two way communication wired controller with built-in WiFi:120N(X6W)
 - Wireless remote controller
 - Third-Party 24V Thermostat
- High efficiency up to 18.7 SEER2, 12 EER2, 10 HSPF2
- 100% heat output at 5F*
- Energy Star and Cold Climate Energy Star certified
- Chassis heater and crankcase heater equipped as standard

* Rated cooling capacity/heating capacity at 5F>=100%