

# SUBMITTAL DATA SHEET

breeze33

Series Name: Premier Series  
Model Number: BZ33-HYP18OUT2-454-G3-P/ BZ33-MSAHU18-454-G3-P

| Air Handler Heat Pump System |               |
|------------------------------|---------------|
| Location:                    | Approval:     |
| Engineer:                    | Date:         |
| Submitted to:                | Construction: |
| Submitted by:                | Unit #:       |
| Reference:                   | Drawing #:    |



| INDOOR SPECIFICATION                      |                                     |
|---|-------------------------------------|
| Indoor Air Flow (Turbo/H/M/L/Si) (CFM)    | 618.0 / 576.8 / 529.7 / 488.5 / N/A |
| Indoor Noise Level (Turbo/H/M/L/Si) (dBA) | N/A/42.5/37.5/30.0/N/A              |
| Dimension(WxDxH)                          | inch                                |
|   | 21 x 17-1/2 x 45                    |
| Package(WxDxH)                            | inch                                |
|   | 26-9/16 x 20-7/8 x 48-5/8           |
| Net/Gross Weight                          | lbs                                 |
|   | 104.72/125.66                       |
|   | kg                                  |
|   | 47.5/57                             |

| OUTDOOR SPECIFICATION        |                             |
|------------------------------|-----------------------------|
| Compressor Type              | ROTARY                      |
| Compressor Model             | KTM240D46UKT2               |
| Refrigerant                  | R454B                       |
| Refrigerant Oil Charge(mL)   | 620                         |
| Refrigerant Oil              | VG74                        |
| Outdoor Air Flow (Max) (CFM) | 1765.8                      |
| Outdoor Noise Level (dBA)    | 59                          |
| Dimension(WxDxH)             | inch                        |
|                              | 35-1/16 x 13-7/16 x 26-1/2  |
| Package(WxDxH)               | inch                        |
|                              | 39-3/16 x 15-11/16 x 29-1/8 |
| Net/Gross Weight             | lbs                         |
|                              | 99.5/107.80                 |
|                              | kg                          |
|                              | 45.3/48.9                   |

| EFFICIENCY |    |         |      |
|------------|----|---------|------|
| Cooling    |    | Heating |      |
| SEER2      | 18 | HSPF2-4 | 10   |
| EER2       | 12 | COP     | 3.64 |

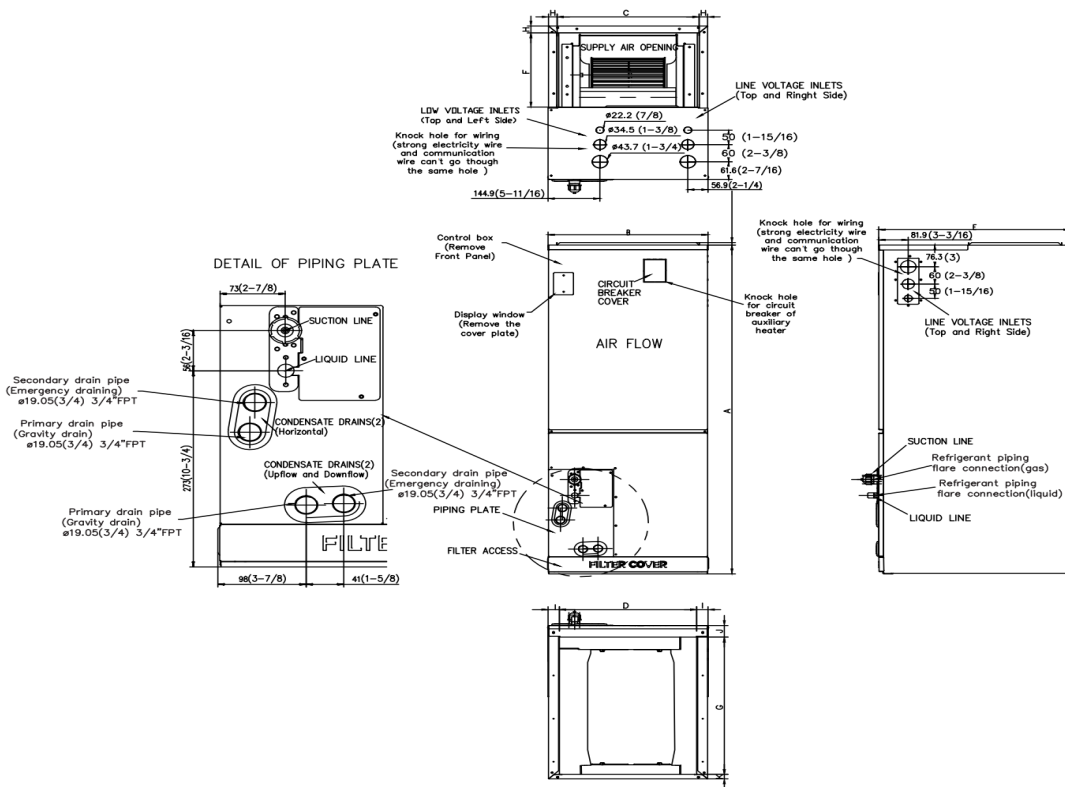
| PERFORMANCE of Cooling          |   |
|---------------------------------|---|
| Cooling (Btu/hr)                |   |
| Rated Capacity                  | 18000   |
| Min/Max Capacity                | 6000~20400  |
| Moisture Removal(L/h)           | 1.69  |
| Standard Operating Range(°F/°C) | -22~-122(-30~50)                                    |
| Conditions:                     | Indoor: 80°F DB/67°F WB<br>Outdoor: 95°F DB/75°F WB |

| PERFORMANCE of Heating          |   |
|---------------------------------|---|
| Heating (Btu/hr)                |   |
| 1. @ 47°F Rated                 | 19500   |
| 1. @ 47°F Min/Max Capacity      | 5000~21600  |
| 2. @ 17°F Rated                 | 14000   |
| 3. @ 5°F Rated: Capacity / COP  | 18000/2.2   |
| 3. @ 5°F Max: Capacity          | 18000   |
| Standard Operating Range(°F/°C) | -22~-75(-30~24)                                     |
| 1. Conditions:                  | Indoor: 70°F DB/60°F WB<br>Outdoor: 47°F DB/43°F WB |
| 2. Conditions:                  | Indoor: 70°F DB/60°F WB<br>Outdoor: 17°F DB/15°F WB |
| 3. Conditions:                  | Indoor: 70°F DB/60°F WB<br>Outdoor: 5°F DB/5°F WB   |

| ELECTRICAL                       |  |
|----------------------------------|--|
| Power Supply                     | 208/230V,60Hz,1Ph                      |
| System MCA                       | 19                                     |
| Connection Wiring                | AWG 14-4                               |
| System MOCP                      | 20                                     |
| Compressor RLA                   | 11.7                                   |
| Outdoor Fan Motor RLA            | 0.9                                    |
| Outdoor Fan Motor W              | 80                                     |
| Indoor Fan Motor RLA             | 2.3                                    |
| Indoor Fan Motor W               | 250                                    |
| System Power Input @ Cooling (W) | 1500(250 ~ 1900)                       |
| System Power Input @ Heating (W) | 1570(300 ~ 1920)                       |
| MCA: Min. circuit amps (A)       | MOCP: Max. over current protection (A) |
| RLA: Rated load amps (A)         | W: Fan motor rated output (W)          |

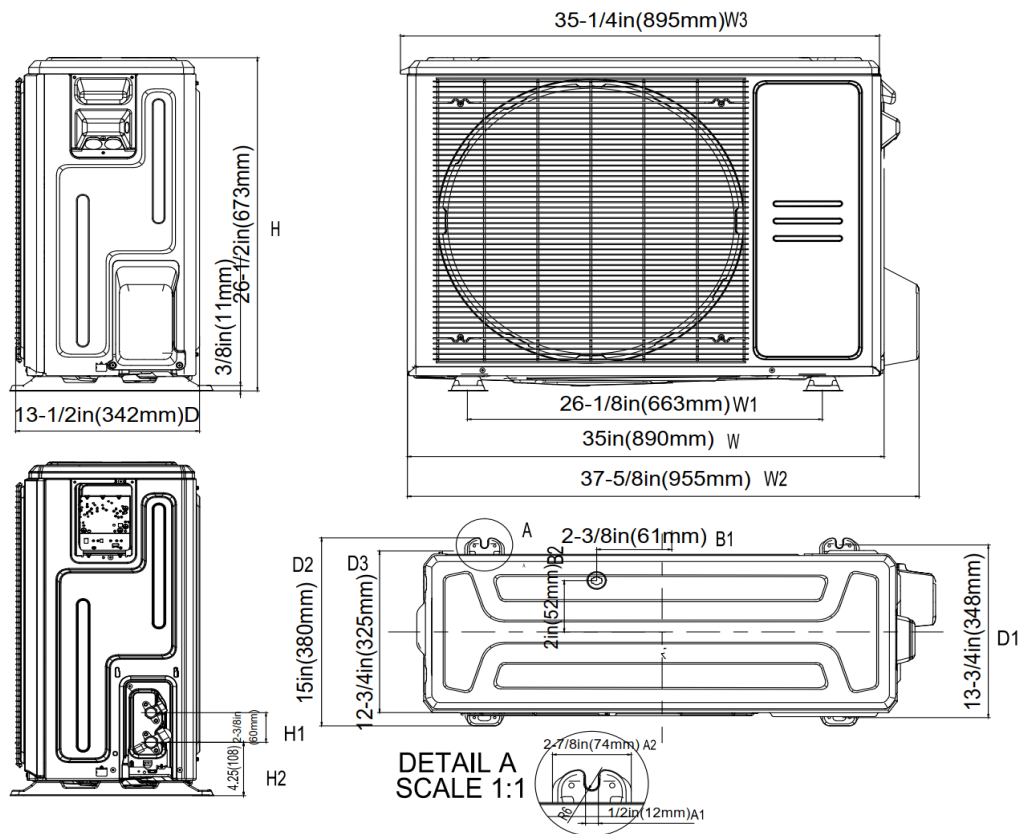
| PIPING  |                    |
|---|--------------------|
| Throttle type(Indoor)                         | N/A                |
| Throttle type(Outdoor)                        | EXV+Throttle valve |
| Liquid Size                                   | 6.35mm(1/4in)      |
| Gas Size                                      | 12.7mm(1/2in)      |
| Max. Piping Length(ft/m)                      | 98.4(30)           |
| Max. Height Difference(ft/m)                  | 65.6(20)           |
| Max. Pre-charged Length(ft/m)                 | 24.6(7.5)          |
| Refrigerant Pre-charged Amount(oz/kg)         | 55.38(1.57)        |
| Additional Charge of Refrigerant(oz/ft)/(g/m) | 0.16(15)           |
| Connection Method                             | Flared             |

# Indoor Unit Dimension

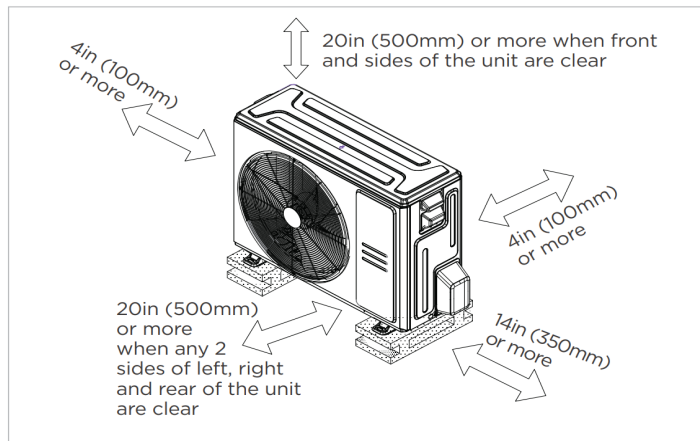


| Dimensions | Model                              | 18k/24k |      | 30k/36k |      | 48k/60k |      |
|------------|------------------------------------|---------|------|---------|------|---------|------|
|            |                                    | inch    | mm   | inch    | mm   | inch    | mm   |
| A          | Model Height                       | 45      | 1143 | 49      | 1245 | 53      | 1346 |
| B          | Model Width                        | 17-1/2  | 445  | 21      | 534  | 24-1/2  | 622  |
| C          | Supply Air Opening Width           | 15-5/8  | 397  | 19-1/8  | 486  | 22-5/8  | 575  |
| D          | Return Air Opening Width           | 15-1/8  | 384  | 18-5/8  | 473  | 22-1/8  | 562  |
| E          | Model Depth                        | 21      | 534  | 21      | 534  | 21      | 534  |
| F          | Supply Air Opening Depth           | 10-1/4  | 260  | 10-1/4  | 260  | 10-1/4  | 260  |
| G          | Return Air Opening Depth           | 18-3/4  | 476  | 18-3/4  | 476  | 18-3/4  | 476  |
| H          | Supply Air Opening Clearance       | 15/16   | 24   | 15/16   | 24   | 15/16   | 24   |
| I          | Return Air Opening Side Clearance  | 1-1/4   | 32   | 1-1/4   | 32   | 1-1/8   | 28   |
| J          | Return Air Opening Front Clearance | 1-1/2   | 38   | 1-5/8   | 41   | 1-5/8   | 41   |
| K          | Return Air Opening Back Clearance  | 5/8     | 16   | 5/8     | 16   | 3/4     | 19   |

# Outdoor Unit Dimension

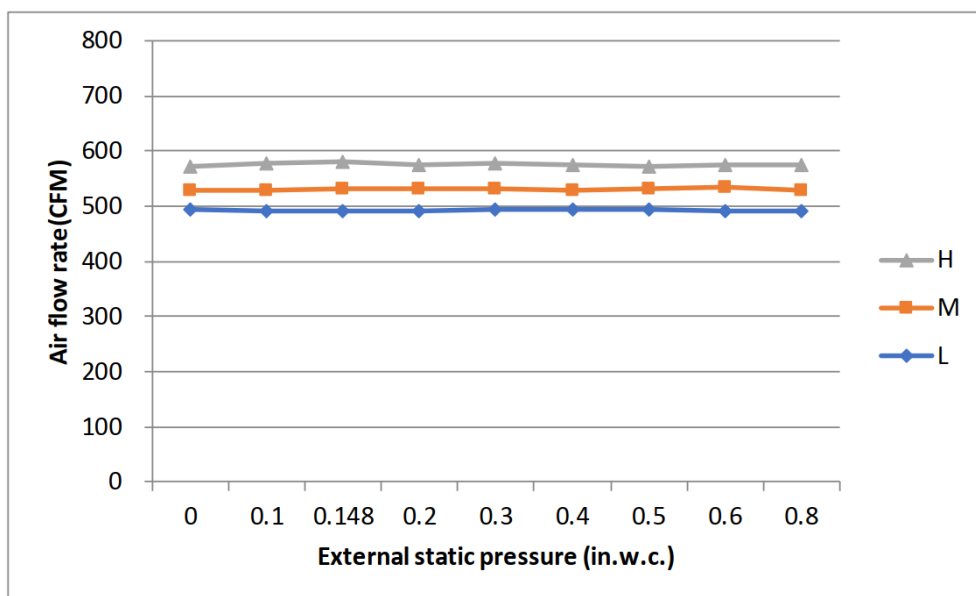


# Installation Instruction



- ☒ Meets all spatial requirements shown in Installation Clearance Requirements above.

Fan Performance For Indoor Unit



#### Features

- Multi-position installation: horizontal(left or right), vertical( up or down)
- Aluminum Coil
- Constantly Air Flow system up to 0.80 In.W.G
- 1 inch R4.2 fiberglass free insulation reduces condensation and boosts efficiency(optional)
- Optional Auxiliary heat kit up to 25kW
- Easy Maintenance
- Multiple control options available:
  - Two way communication wired controller:120N(X6)
  - Two way communication wired controller with built-in WiFi:120N(X6W)
  - Wireless remote controller
  - Third-Party 24V Thermostat
- High efficiency up to 18.7 SEER2, 12 EER2, 10 HSPF2
- 100% heat output at 5F\*
- Energy Star and Cold Climate Energy Star certified
- Chassis heater and crankcase heater equipped as standard

\* Rated cooling capacity/heating capacity at 5F>=100%