

SUBMITTAL DATA SHEET

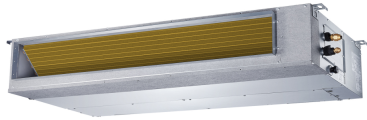
breeze33

Series Name: Premier Series

Model Number: BZ33-HYP12OUT2-454-G3-P/BZ33-DIDU12-454-G3-P

Slim Duct Heat Pump System

Location:	Approval:
Engineer:	Date:
Submitted to:	Construction:
Submitted by:	Unit #:
Reference:	Drawing #:



INDOOR SPECIFICATIONS

Indoor Air Flow (Turbo/H/M/L/Si) (CFM)	400.2 / 323.7 / 264.9 / 176.6 / 117.7
Indoor Noise Level (Turbo/H/M/L/Si) (dBA)	N/A/36/34.5/32.5/25.5
Indoor static pressure range	0-0.4
Dimension(WxDxH)	inch 27-9/16 x 19-15/16 x 7-7/8
	mm 700 x 506 x 200
Package(WxDxH)	inch 33-7/8 x 21-1/4 x 11-1/4
	mm 860 x 540 x 285
Net/Gross Weight	lbs 39.46/46.74
	kg 17.9/21.2

OUTDOOR SPECIFICATION

Compressor Type	ROTARY
Compressor Model	KTN110D42UFZ
Refrigerant	R454B
Refrigerant Oil Charge(mL)	350
Refrigerant Oil	VG74
Outdoor Air Flow (Max) (CFM)	1471.5
Outdoor Noise Level (dBA)	56.0
Dimension(WxDxH)	inch 31-11/16 x 13 x 21-13/16
	mm 805 x 330 x 554
Package(WxDxH)	inch 36 x 14-9/16 x 24-3/16
	mm 915 x 370 x 615
Net/Gross Weight	lbs 72.75/78.70
	kg 33/35.7

EFFICIENCY

Cooling	Heating
SEER2	20.0
EER2	12.0
HSPF2-4	10
COP	3.39

PERFORMANCE of Cooling

Cooling (Btu/hr)

Rated Capacity	12000
Min/Max Capacity	3400~13500
Moisture Removal(L/h)	N/A
Standard Operating Range(°F/°C)	-22~122(-30~50)
Conditions:	Indoor: 80°F DB/67°F WB Outdoor: 95°F DB/75°F WB

PERFORMANCE of Heating

Heating (Btu/hr)

1. @ 47°F Rated	12500
1. @ 47°F Min/Max Capacity	3800~16200
2. @ 17°F Rated	9600
3. @ 5°F Rated: Capacity / COP	11800/1.90
3. @ 5°F Max: Capacity	11800
Standard Operating Range(°F/°C)	-22~75(-30~24)
1. Conditions:	Indoor: 70°F DB/60°F WB Outdoor: 47°F DB/43°F WB
2. Conditions:	Indoor: 70°F DB/60°F WB Outdoor: 17°F DB/15°F WB
3. Conditions:	Indoor: 70°F DB/60°F WB Outdoor: 5°F DB/5°F WB

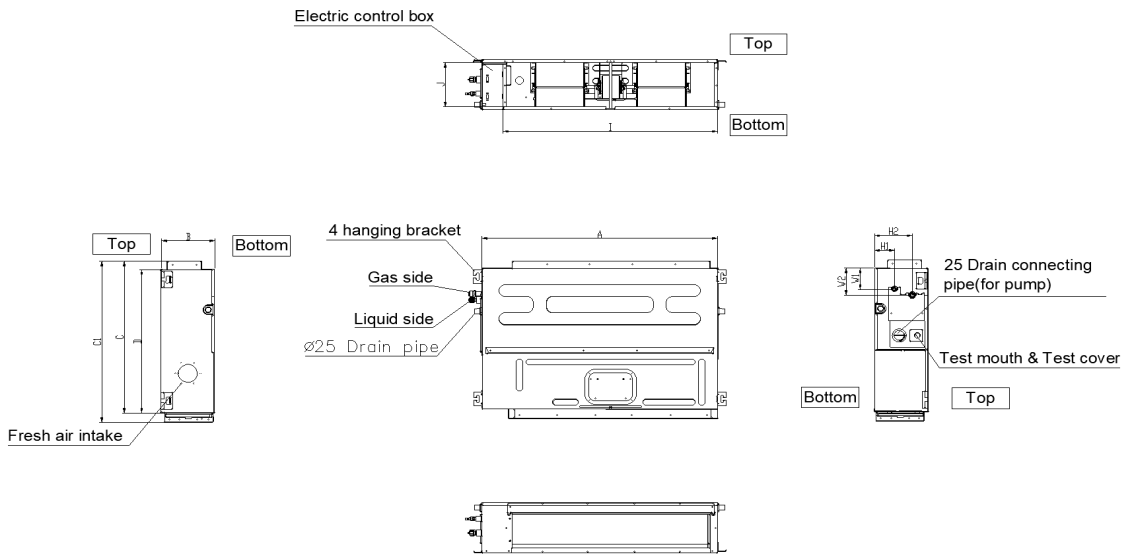
ELECTRICAL

Power Supply	208/230V, 60Hz, 1Ph
System MCA	15.00
Connection Wiring	14#x4
System MOCP	15
Compressor RLA	11.6
Outdoor Fan Motor RLA	0.5
Outdoor Fan Motor W	34
Indoor Fan Motor RLA	1.2
Indoor Fan Motor W	81
System Power Input @ Cooling (W)	1000(145 ~ 1200)
System Power Input @ Heating (W)	1080(260 ~ 1450)
MCA: Min. circuit amps (A)	MOCP: Max. over current protection (A)
RLA: Rated load amps (A)	W: Fan motor rated output (W)

PIPING

Throttle type(Indoor)	N/A
Throttle type(Outdoor)	EXV
Liquid Size	6.35mm(1/4in)
Gas Size	9.52mm(3/8in)
Max. Piping Length(ft/m)	82.00(25)
Max. Height Difference(ft/m)	32.80(10)
Max. Pre-charged Length(ft/m)	24.6(7.5)
Refrigerant Pre-charged Amount(oz/kg)	35.27(1.00)
Additional Charge of Refrigerant(oz/ft)/(g/m)	0.16(15)
Connection Method	Flared

Indoor Unit Dimension

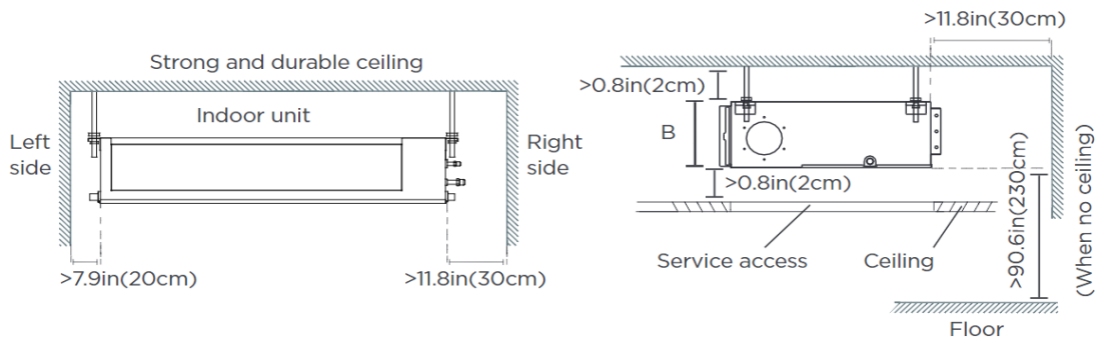


Model(kBtu/h)	unit	A	B	C	C1	D
	mm	700	200	470	506	450
6 -12	in	27-1/2	7-7/8	18-1/2	20	17-3/4
	mm	880	210	634	674	600
18	in	34-5/8	8-1/4	25	26-1/2	23-5/8

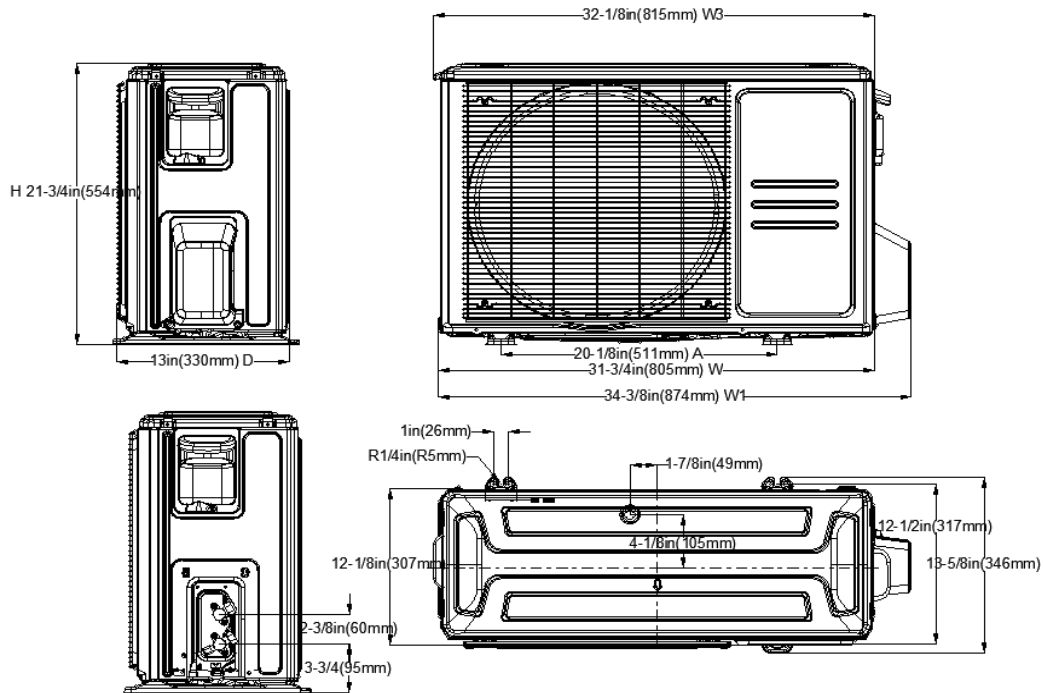
Installation Instruction

Installation place

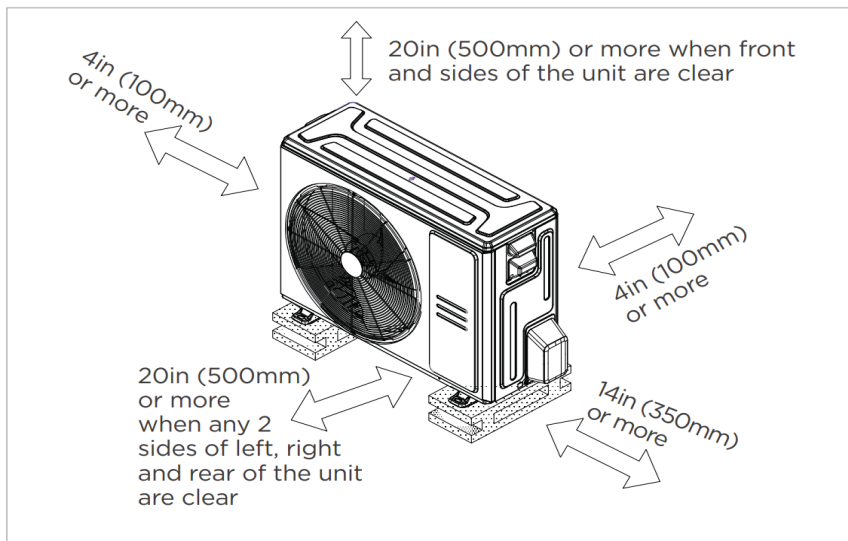
The distance between the mounted indoor unit should meet the specifications illustrated in the following diagram.



Outdoor Unit Dimension

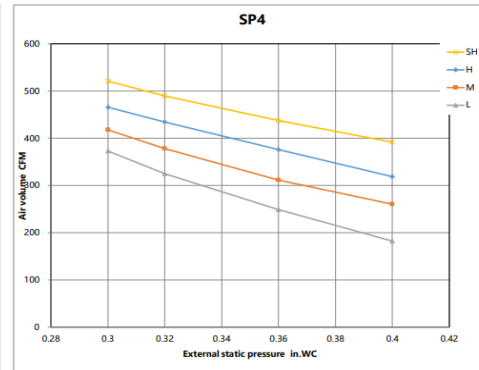
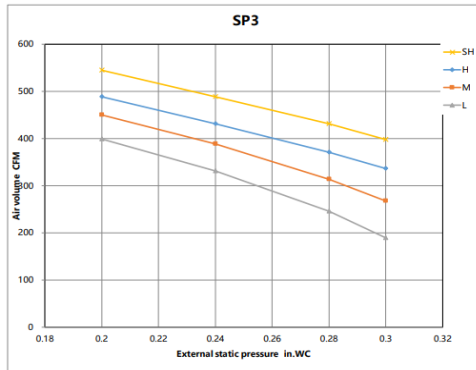
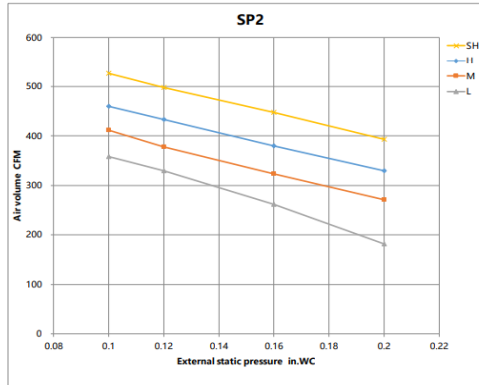
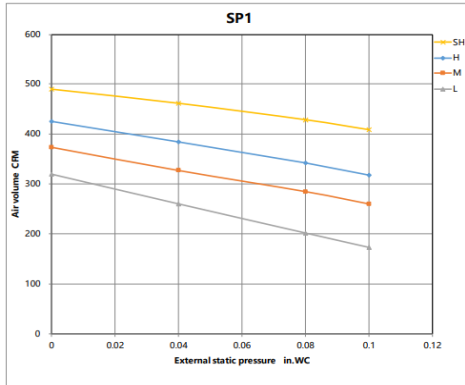


Installation Instruction

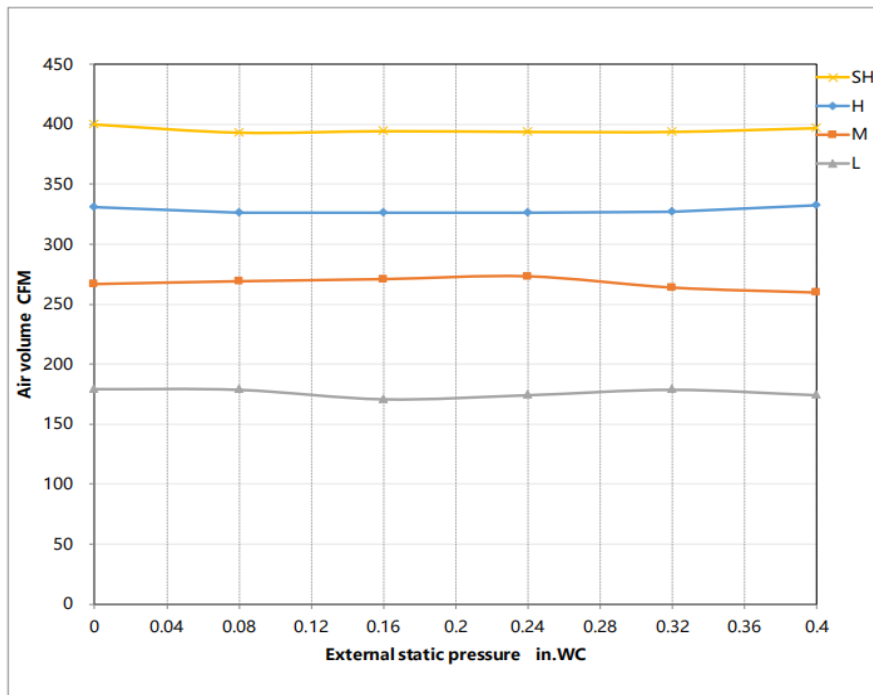


☒ Meets all spatial requirements shown in Installation Clearance Requirements above.

Fan performance



Constant airflow



FEATURES

- Compatible with both horizontal and vertical installation(Optional)
- Static pressure setting stages: 4
- Refrigerant leakage detection sensor
- Constant airflow
- Built-in pump
- i-clean
- Fan speed stages: 1~100%
- WiFi capability: through WiFi dongle or wired controller with built-in WiFi
- OTA(by using wired controller 120N(X6W))
- 2-pin connector(HA/HB) for programmable wired controller
- Multiple control options available:
 - Two way communication wired controller:120N(X6)
 - Two way communication wired controller with built-in WiFi:120N(X6W)
 - Infrared wired controller: 120L
 - Wireless remote controller
 - Third-Party 24V Thermostat*

*24V interface is required.