

Diamond TUB & SHOWERS
www.diamondtubshowers.com where design and durability meet

Diamond Tub & Showers Spec Sheet

Model: TB 603375 L/R Drain (RH Shown)

Description: Tub/Shower Combo 1 Piece Unit

Specifications

Model #	Material	Wall Finish	Pieces	Drain	Apron Height	Net Weight Lbs.
TB 603375	Fiberglass/Gelcoat	Smooth	1	LH/RH	15"	

Sump Data

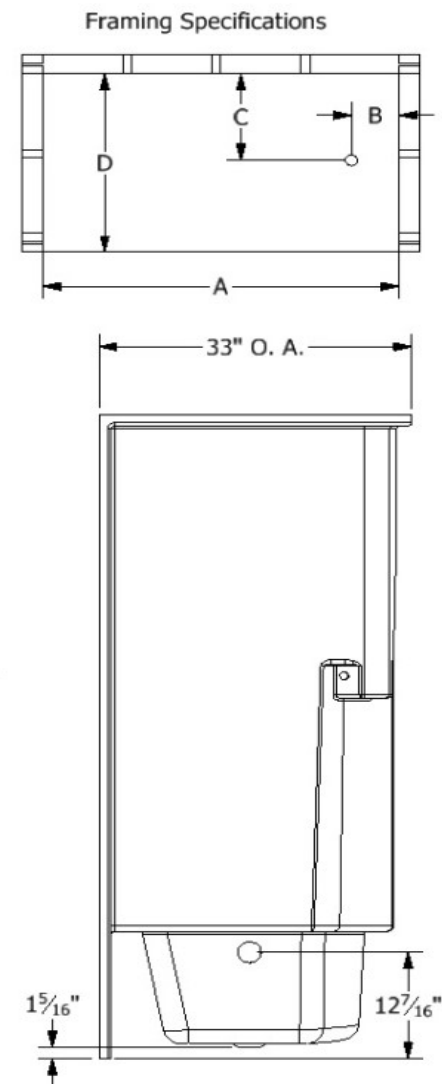
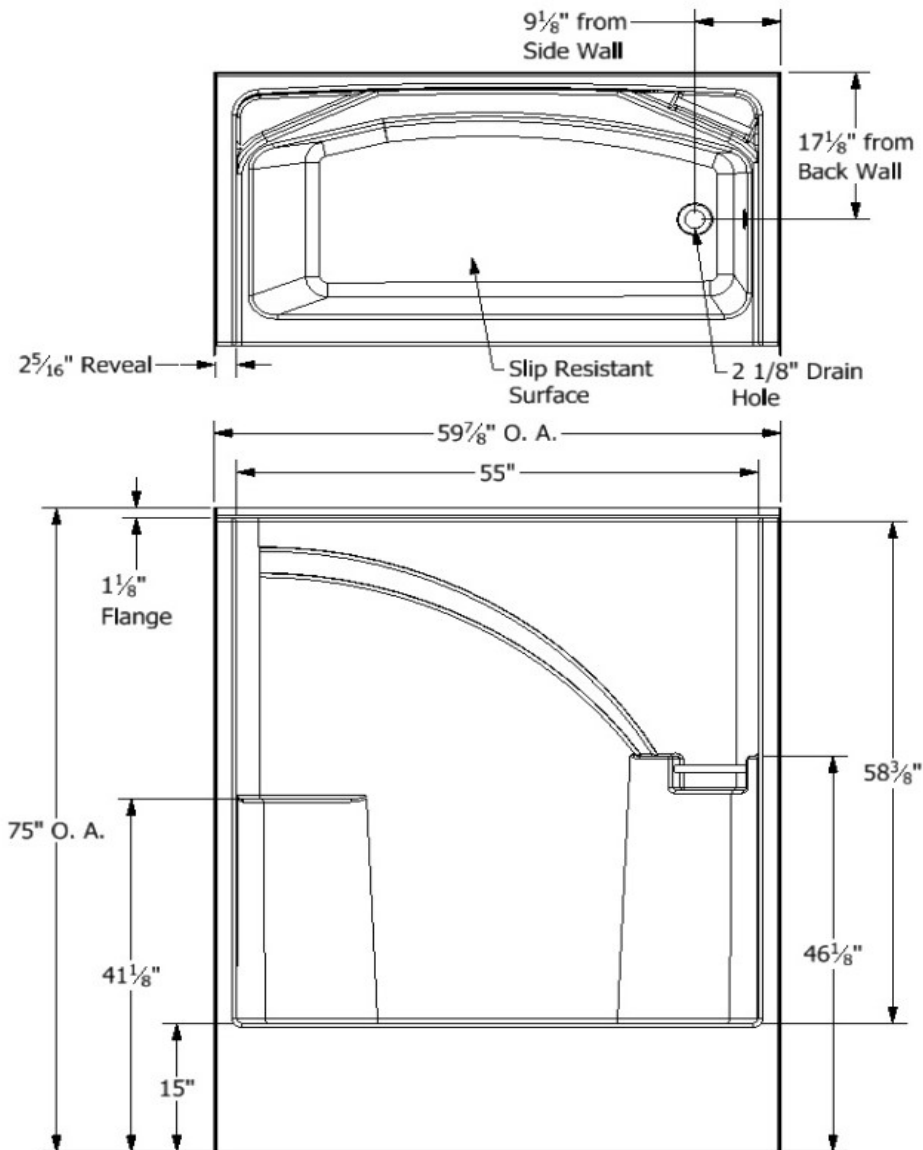
Top of Drain to Bottom of Overflow	Capacity to Overflow Gallons	Top Dimensions Length	Top Dimensions Width	Bottom Dimensions Length	Bottom Dimensions Width
9 1/4"	36.0	52 3/16"	23 1/8"	41 5/16"	17"

Framing Dimensions

A	B	C	D
60"	9 1/8"	17 1/8"	33"

Enclosure Opening

Length	Width
55"	58 3/8"



Certified to conform to ANSI Z124.1 and ASTM E-162 Flame Spread Rating 200 or less and is under a program of factory inspection.

Manufactured by Front Line Mfg., Inc. Warsaw, IN



5/31/19



Diamond Tub & Showers Spec Sheet

Model: TB 603377 L/R Drain (RH Shown)

Description: Tub/Shower Combo 1 Piece Unit

Specifications

Model #	Material	Wall Finish	Pieces	Drain	Apron Height	Net Weight Lbs.
TB 603377	Fiberglass/Gelcoat	Smooth	1	LH/RH	17"	

Sump Data

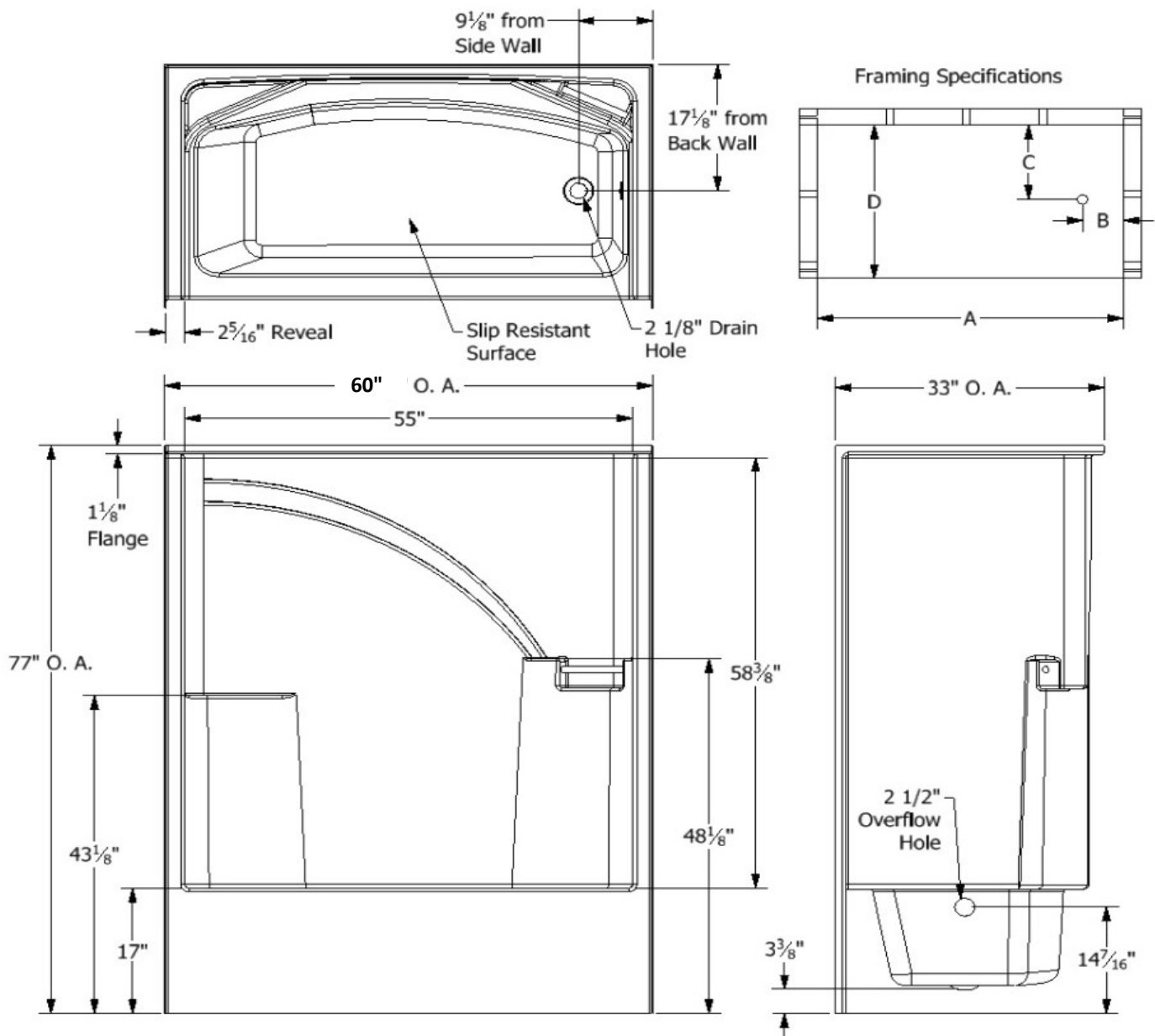
Top of Drain to Bottom of Overflow	Capacity to Overflow Gallons	Top Dimensions Length	Top Dimensions Width	Bottom Dimensions Length	Bottom Dimensions Width
9 1/4"	36.0	52 3/16"	23 1/8"	41 5/16"	17"

Framing Dimensions

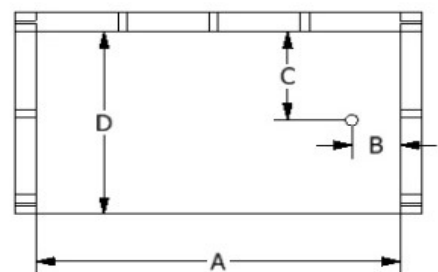
A	B	C	D
60"	9 1/8"	17 1/8"	33"

Enclosure Opening

Length	Width
55"	58 3/8"



Framing Specifications



Certified to conform to ANSI Z124.1 and ASTM E- 162 Flame Spread Rating 200 or less and is under a program of factory inspection.

Manufactured by Front Line Mfg., Inc. Warsaw, IN



10/9/20