

S33A2-3636CPANNS

36" x 36" x 6" (915mm x 915mm x 153mm)



FEATURES

- Durable smooth finish
- Pre-leveled base
- Center drain
- Slip-resistant, textured bottom
- Designed for tile-wall applications
- Extended tiling flange (3T)
- Enhanced front profile
- Patented design features:
 - Corner drainage channels
 - Step-design finishing guides
 - Extended nailing flange
- Solid A² Composite material
- Available in White
- 15-Year residential limited warranty
- Meets or exceeds the following:
 - CSA B45.5/IAPMO Z124



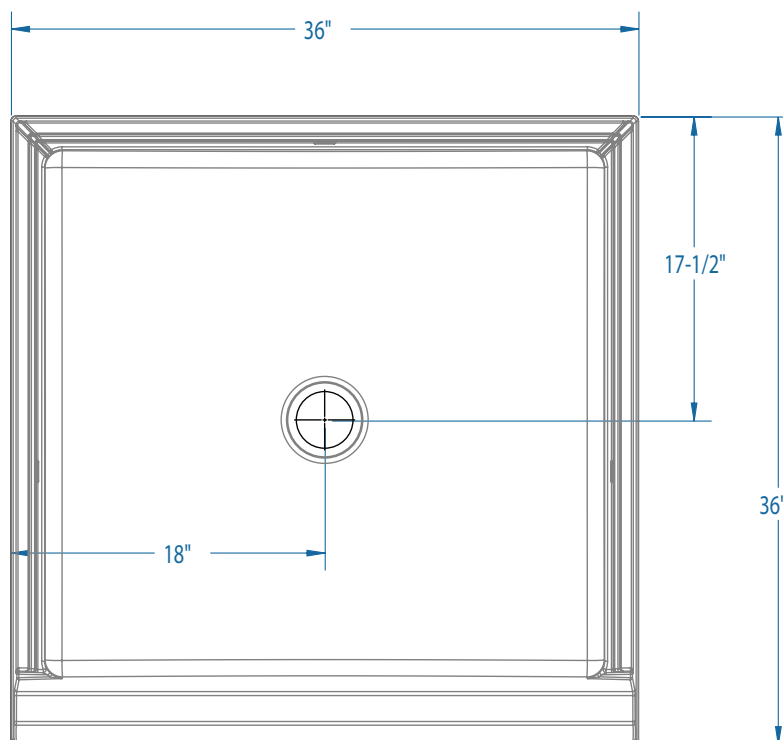
What is A² Composite?

Lightweight and durable, our A² Composite is an engineered compound of resin, glass and special fillers formed into sheets. These sheets are then placed under high pressure and heat to liquefy the compound, allowing it to flow and take the shape of almost any form imaginable. The results are simple, stylish and a snap to install.



S33A2-3636CPANNS

36" x 36" x 6" (915mm x 915mm x 150mm)



FEATURES Dimensional Tolerance $\pm 3/8"$. Dimensions needed for site preparation should be measured from the unit. Stream33 assumes no responsibility for preparatory work.

Model	Material	Drain	Net Wt.	Pkg. Wt.
S33A2-3636CPANNS	A ² Composite	Center	34 lbs (15 kg)	39 lbs (18 kg)

DIMENSIONS

Specifications	
Width: Overall / Net	36" (915mm)
Depth: Overall / Net	36" (915mm)
Height: Overall / Net	7" (178mm) / 6" (153mm)
Enclosure Opening	–
Skirt Height	6" (153mm)
Drain Rough-In (from back wall)	17-1/2" (445mm)
Drain Rough-In (from side wall)	18" (457mm)
Drain: Diameter / Clearance	3-1/4" (83mm) / 3/8" (10mm)

FRAMING DIMENSIONS

Type	Depth (D)	Width (W)	Height (H)	A	B	C
Alcove	36" (915mm)	36" (915mm)	7" (178mm)	Box Out	18" (457mm)	17-1/2" (445mm)

