

Single Package Vertical Air Conditioners



FRIEDRICH

1883

Vert-I-Pak®

Installs easily in a closet for quiet operation and provides a more homelike appearance for your guests.



THE EXPERTS IN ROOM AIR CONDITIONING



A Better Solution for Hospitality & Multi-Family Suites

Ducted and centrally-located, the Vert-I-Pak eliminates the need for multiple through-the-wall units.



Vert-I-Pak® advantages

- Easy to install
- Higher efficiencies
- Quieter operation
- Certified by AHRI
- Diamonblue Advanced Corrosion Protection® standard on the coil

1 YR.
WARRANTY
PARTS AND LABOR

5 YR.
LIMITED WARRANTY



Better Aesthetics

Outdoors

Packaged unit eliminates the clutter of outdoor condensing units and the sleek architectural grille is available in custom colors to match the building's exterior.

Indoors

All the guest sees is a thermostat.



A quiet and energy efficient option for extended stay properties, suites, assisted living, student housing, and commercial spaces.

VERT-I-PAK® IS A SUPERIOR PRODUCT

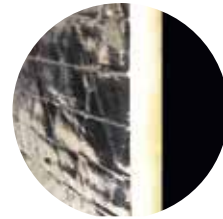
What you'll find on Friedrich Vert-I-Pak®	What you'll find on many competitor's products
<ol style="list-style-type: none">1. Floating chassis design slides into a wall plenum and is held firmly in place by a sealing gasket, reducing noise from vibration transfer.2. ½ inch foil-backed insulation added on the inside of the chassis to reduce sound transmission into the guest room.3. Efficiencies above industry standards with EERs up to 10.5.4. Condensate removal system uses slinger ring technology to cool the coil and increase efficiency.5. Dynamically balanced blower with large, vibration-absorbing motor mounts for smooth and quiet operation.6. Patented telescoping plenums (accessory) easily adapt to more installations.7. 5 year limited warranty includes labor.	<ol style="list-style-type: none">1. Chassis is screwed into the wall plenum. Metal-on-metal contact transfers vibration, increasing operating noise under typical conditions. Noise is transferred through the walls and into the room.2. No insulation on the unit to reduce noise transmission into the guest room.3. Hard plastic feet on the unit base which are less durable and transfer harsh vibration noise.4. Different plenums needed based on varying wall depths.5. No labor warranty.

Friedrich engineered for quieter performance

Unique installation method. Superior insulation for reduced sound levels.

FRIEDRICH'S 'FREE FLOATING' DESIGN

The chassis slides into the wall plenum and a gasket firmly seals the chassis to the patented telescoping plenum. This eliminates vibration noises that are transmitted into the room in competitor's metal-on-metal fixed installations. Extra thick, vibration-absorbing rubber grommets mounted on durable base that is engineered for structural and acoustic integrity.



Foil-backed, 1/2" insulation blanket inside the cabinet reduces sound transmitted into the guest room

Reliable and durable

- PSC permanently lubricated motor for low maintenance and maximum efficiency
- Engineered drain pan won't rust, eliminating the risk of unsightly rust stains from condensation on the building exterior
- Painted, 18-gauge galvanized steel cabinet resists corrosion
- Standard safety power disconnect
- Electronic control panel on unit for easy diagnostics and servicing
- 100% run tested prior to shipment- Every unit is tested in every operating mode before it ships for optimal performance and reliability


DIAMONBLUE
Advanced Corrosion Protection.



Protects the outdoor coil against deterioration and extends the life of the unit especially in harsh coastal environments.

Easy installation

- Can be installed from any interior side (front, right or left)
- Ductable to multiple rooms
- Compact and lightweight, weighs as little as 125 lbs.
- Installation does not require an HVAC technician
- Prewired, charged and piped
- All units are ready to install with only electrical hook up needed to be up and running
- 10" crimped and beaded duct-collar ready to attach flex duct
- Patented telescoping wall plenums adjust to fit varying exterior wall thicknesses
- Primary condensate removal system provided thru 3/4" pipe fittings for more placement options
- Secondary overflow from primary drain*
- Central desk control ready

- 24-volt remote wireless or wired thermostat ready
- All units are shipped (on pallet) with return air filter

Energy management thermostats available

- Wired and wireless thermostats
- Integrated occupancy sensor
- Auto changeover
- 5 distinct energy presets
- Comprehensive remote management capability**



* 24000 Btu model uses secondary gravity-fed drain

** Energy management capability requires purchase of additional hardware and service fee

A better heating and cooling option inside and out

- Eliminates the clutter of outdoor condensing units and the need for vandalism barriers.
- Completely self-contained
- No refrigerant lines running from floor to floor
- Fast, easy replacement keeps spaces livable

Improved guest comfort

- Individually controlled
- Heat and cool
- Duct air specifically where it's needed, not just on the outside wall
- 2-speed fan with constant fan option on Friedrich RT6 and WRT1 thermostats

A better choice than whole building solutions

- Lower installed cost
- Independent metering (no need to prorate for multitenant applications)
- Individual temperature set point (one unit can heat and others can cool)
- Less risk, with a whole building system spaces may become uninhabitable until the system is repaired or replaced
- Vert-I-Paks can be easily accessed for maintenance or replacement



Installs in a small mechanical closet and can be ducted to multiple rooms.

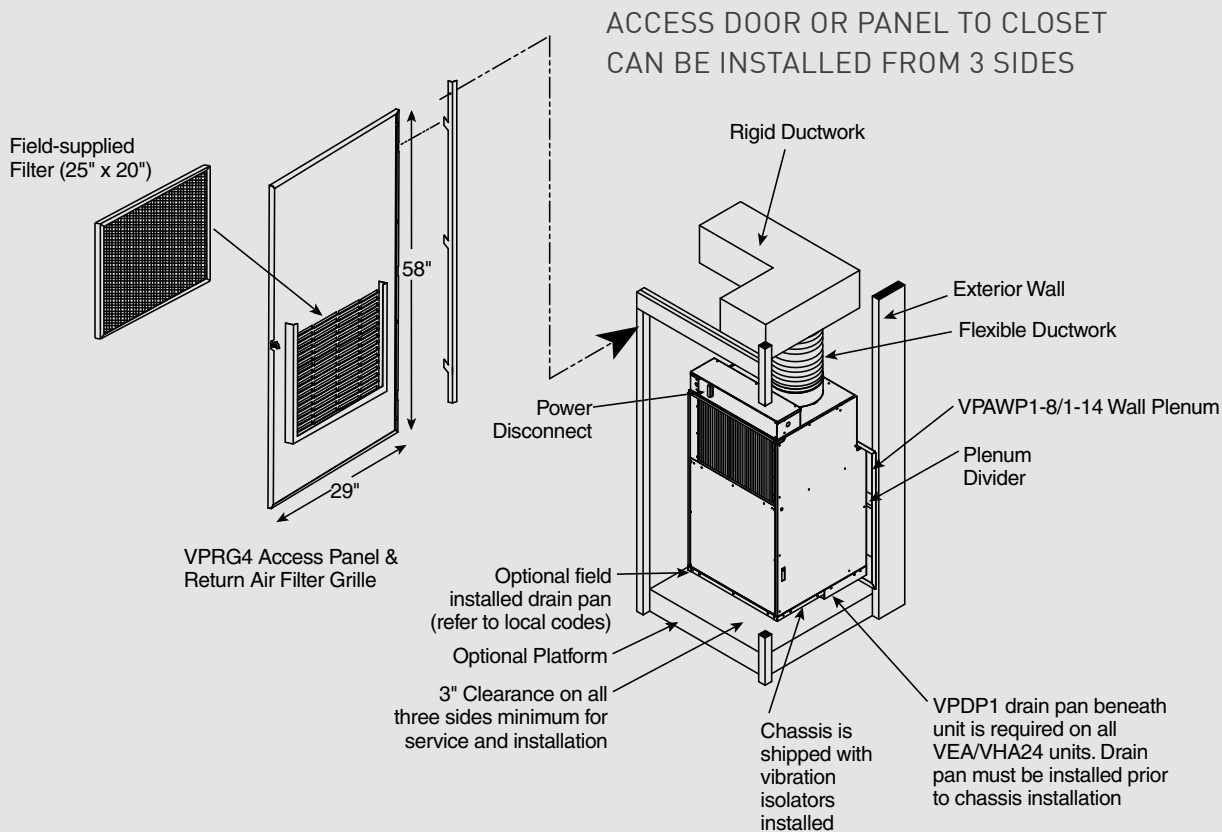
Electric Heat

COOLING
8600-23000 Btu
Up to 10.5 EER
ELECTRIC HEAT
2500-10000 Btu

Heat Pump

COOLING
8600-23000 Btu
Up to 10.5 EER
HEATING
8000 -20000 BTU
All 3.0 COP

TYPICAL VERT-I-PAK® INSTALLATION



Easily replace older First Company vertical units*

Vert-I-Pak® is an exact fit for existing First Company SPXR-series single package vertical units when installed with the VPASA1 Sleeve Adapter.



Sleeve Adapter Kit

SINGLE-PIECE
welded adapter for a
rigid installation

NO EXPENSIVE
CUTTING or
RE-SIZING
of wall opening
necessary



EXACT FIT to
First Company
sleeve

EASY
CONNECTION to
Friedrich chassis

SAVE ON ENERGY COSTS WITH HIGHER EFFICIENCY VERT-I-PAK® UNITS

Friedrich Vert-I-Pak		First Company
9000 Btu A/C	10.5 EER	9.0 EER
12000 Btu A/C	9.8 EER	9.0 EER
18000 Btu A/C	9.0 EER	9.0 EER

9000 Btu HP	10.5 EER	9.0 EER
12000 Btu HP	9.7 EER	9.0 EER
18000 Btu HP	9.1 EER	9.0 EER



Friedrich Vert-I-Pak

Replaces First
Company SPXR
Series



IMPORTANT FEATURE COMPARISONS

Feature	Friedrich Vert-I-Pak	First Company
ARI Certification	YES	NO
Warranty	1st Year Bumper to Bumper, Parts & Labor. 2nd - 5th Year Sealed Refrigeration System, Parts & Labor	1st Year Parts Only. 2nd Year Compressor, Parts Only
Corrosion Protection	Standard	Not Available
Weight	114 Lbs. to 167 Lbs.	245 Lbs. to 255 Lbs.

Service/Support

- Dedicated Service/Sales/Order Support based in San Antonio, TX
- Ability to set up installer as warranty service agent
- Over 1,500 independent service agents throughout the U.S.

* First Company unit is also sourced by Amana and Carrier.

Closet dimensional limitations apply. Sleeve adapter kit includes all parts necessary to mate with First Company sleeve.

Optional Accessories

ARCHITECTURAL LOUVER

VPAL2 and VPSC2

Extruded aluminum grille that attaches to the outdoor section of the wall plenum. Takes in fresh air and returns condensed air. VPSC2 can be ordered in custom colors.

DIMENSIONS: 25 9/16" W x 31 1/16" H

WALL PLENUM

VPAWP1-8, VPAWP1-14

Two-part sleeve that telescopes in and out. Sits inside the exterior wall penetration.

VPAWP1-8 telescopes from 5 1/2"–8"

VPAWP1-14 telescopes from 8"–14"

DIMENSIONS: 24 1/8" W x 30 3/8" H

CUTOUT DIMENSIONS: 24 5/8" W x 30 7/8" H

RETURN AIR GRILLE/ ACCESS PANEL

VPRG4

Hinged panel allows access to unit and return air filter.

A field-supplied filter (25" x 20") should be mounted on the inside grille.

Panel can be mounted with return air openings high or low on the door for optimum sound attenuation.

DIMENSIONS: 29" W x 58" H

CUTOUT DIMENSIONS: 27" W x 55 3/4" H

FIRST COMPANY SLEEVE ADAPTER

VPASA1

Single piece, welded adapter allows retrofit into existing First Company SPXR-series single package vertical unit wall sleeve and louver. Easy connection to Friedrich chassis.

SINGLE STAGE THERMOSTATS

RT6

Wired, single stage, wall-mounted digital thermostat with two fan speeds and backlight for control of Friedrich VERT-I-PAK.

WRT1

Wireless, single stage, wall-mounted digital thermostat with two fan speeds and backlight for control of Friedrich VERT-I-PAK.

ENERGY MANAGEMENT THERMOSTATS

EMRT1

Wired thermostat with occupancy sensor.

EMWRT1

Wireless thermostat with occupancy sensor.

EMOCT

Online connection kit.

EMRAF

Remote access fee.

DRAIN PAN

VPDP1

For VEA/VHA24 models. May be installed prior to chassis for easy installation/removal.



RT6

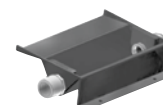


WRT1



EMRT1, EMWRT1


FriedrichLink®



SPECIFICATIONS

MODEL	VEA09K		VEA12K		VEA18K		VEA24K		VHA09K		VHA09R		VHA12K		VHA12R		VHA18K		VHA18R		VHA24K		VHA24R	
COOLING DATA																								
COOLING BTU	9000/8600		11500/11200		17000/16500		23000/22700		9000/8600		8900		11500/11200		12000		17000/16800		16800		23000/22800		22400	
POWER (W)	857/819		1174/1143		1889/1833		2421/2389		857/819		908		1186/1155		1224		1868/1846		1846		2527/2505		2475	
EER	10.5/10.5		9.8/9.8		9.0/9.0		9.5/9.5		10.5/10.5		9.8		9.7/9.7		9.8		9.1/9.1		9.1		9.1/9.1		9.1	
SENSIBLE HEAT RATIO	0.74		0.74		0.70		0.70		0.74		0.74		0.74		0.72		0.70		0.70		0.70		0.70	
HEATER SIZE (kW)	2.5/3.4/5.0		2.5/3.4/5.0		2.5/3.4/5.0		2.5/3.4/5.0/7.5/10.0		2.5/3.4/5.0		2.5/3.4/5.0		2.5/3.4/5.0		2.5/3.4/5.0		2.5/3.4/5.0		2.5/3.4/5.0		2.5/3.4/5.0/7.5/10.0		5.0/7.5/10.0	
HEAT PUMP DATA																								
HEATING BTU	—		—		—		—		8200/8000		8700		11000/10800		11500		16000/15000		15900		20000/20000		20000	
COP @ 47F	—		—		—		—		3.0/3.0		3.0		3.0/3.0		3.0		3.0/3.0		3.0		3.0/3.0		3.0	
HEATING POWER (W)	—		—		—		—		801/782		850		1075/1055		1123		1560/1540		1550		1953/1953		1950	
HEATING CURRENT (A)	—		—		—		—		3.6/3.9		3.4		4.5/4.7		4.4		7.5/8.2		6.5		8.5/9.4		8.1	
ELECTRICAL DATA																								
VOLTAGE (1 PHASE, 60 HZ)	230/208		230/208		230/208		230/208		230/208		265		230/208		265		230/208		265		230/208		265	
VOLT RANGE	253-197		253-197		253-197		253-197		253-197		292/239		253-197		292/239		253-197		292-239		253-197		292-239	
COOLING CURRENT (A)	4.0/4.3		5.0/5.4		8.1/8.6		10.0/10.4		4.0/4.3		3.6		5.3/5.5		5.0		8.2/8.6		6.9		10.9/10.6		9.7	
AMPS L.R	21.0		29.5		42.0		46.0		21.0		16.5		29.5		23.5		42.0		42.0		46.0		46	
AMPS F.L.	3.5		4.7		7.8		9.5		3.5		3.1		5.0		4.3		7.8		7.8		9.5		9.5	
INDOOR MOTOR (HP)	1/4		1/4		1/4		1/4		1/4		1/4		1/4		1/4		1/4		1/4		1/4		1/4	
INDOOR MOTOR (A)	1.2		1.2		1.2		1.90		1.2		1.08		1.2		1.08		1.2		1.1		1.90		1.8	
OUTDOOR MOTOR (HP)	—		—		—		1/4		—		—		—		—		—		—		1/4		1/4	
OUTDOOR MOTOR (A)	—		—		—		0.85		—		—		—		—		—		—		0.85		0.9	
PHYSICAL																								
DIMENSIONS (W X D X H)	23"x23"x32"		23"x23"x32"		23"x23"x32"		23"x23"x47"		23"x23"x32"		23x23x32		23"x23"x32"		23x23x32		23"x23"x32"		23"x23"x32"		23"x23"x47"		23"x23"x47"	
NET WEIGHT (LBS)	114		124		144		167		114		114		125		124		144		165		167		187	
SHIPPING WEIGHT (LBS)	125		135		155		220		125		125		135		135		155		176		220		240	
TEST SETTING	LOW		LOW		HIGH		LOW		LOW		LOW		LOW		LOW		HIGH		HIGH		LOW		LOW	
R410A CHARGE (OZ)	41.5		45		48.1		65		38		39		39		37		48		48		65		65	
AIRFLOW DATA																								
INDOOR CFM*	LOW	HIGH	LOW	HIGH	LOW	HIGH	LOW	HIGH	LOW	HIGH	LOW	HIGH	LOW	HIGH	LOW	HIGH	LOW	HIGH	LOW	HIGH	LOW	HIGH	LOW	HIGH
.10" ESP	405	450	*350	450	400	*450	*610	700	*375	450	420	450	*375	450	*390	450	400	*450	400	*450	*610	700	*610	700
.15" ESP	375	420	325	425	375	425	585	670	350	425	405	425	350	425	375	425	375	425	375	425	585	670	585	670
.20" ESP	345	385	300	400	350	410	560	640	*325	400	385	400	325	400	350	400	350	400	350	400	560	640	560	640
.25" ESP	*325	365	285	375	330	390	535	610	300	375	355	375	300	375	325	375	330	390	330	390	535	610	535	610
.30" ESP											*325													

NOTES:

*TESTING

COOLING STANDARDS: 95°F DB/75°F WB OUTDOOR, 80°F DB/67°F WB INDOOR
HEATING STANDARDS: 47°F DB/43°F WB OUTDOOR, 70°F DB/60°F WB INDOOR

NORMAL VALUE WET COIL @ .1" ESP.

RATED CFM AT LOW SPEED: VEA09/VHA09....325 VHA12/VEA12....390
VEA18/VHA18....400 VEA24/VHA24....610

DUE TO CONTINUING RESEARCH IN NEW ENERGY-SAVING TECHNOLOGY,
SPECIFICATIONS ARE SUBJECT TO CHANGE WITHOUT NOTICE.



Friedrich Air Conditioning Co. | 10001 Reunion Place, Suite 500 | San Antonio, TX 78216 | 877.599.5665 www.friedrich.com