

Features

Configurations

- Upflow / Highboy
- Basement / Lowboy
- Horizontal / Counterflow
- Horizontal only

Heat Exchanger

- Heavy-duty 14 gauge steel, with long lasting, high temperature ceramic fiber combustion chamber
- Easy access large diameter stainless steel clean out ports

Cabinet

- Foil-faced high density fiberglass insulation reduces heat loss and sound
- Pre-painted steel for maximum durability

Air Delivery

- ECM™ variable speed blower motor
- Motor features "soft start" and "soft stop" for quiet operation
- Active and passive dehumidification feature
- Easily removable slide-out blower design
- Dynamically balanced blower wheel and resilient motor mounts for smooth and quiet operation

Burner

- High quality Beckett™ Flame Retention AFG Burner for efficient combustion
- High efficiency PSC Burner motor to provide consistent operation through all operating conditions
- Solid state ignition provides a consistent 10,000 volts for smooth ignition

Installation / Serviceability

- Includes standard barometric damper
- Low GPH nozzle installed, higher GPH nozzle provided (shipped loose)

Warranty

10 year limited parts warranty / lifetime heat exchanger warranty available. See limited warranty document for details.

LUF = Upflow / Highboy



LBF/R = Basement / Lowboy



LHF/R = Horizontal / Counterflow

LHR = Horizontal only

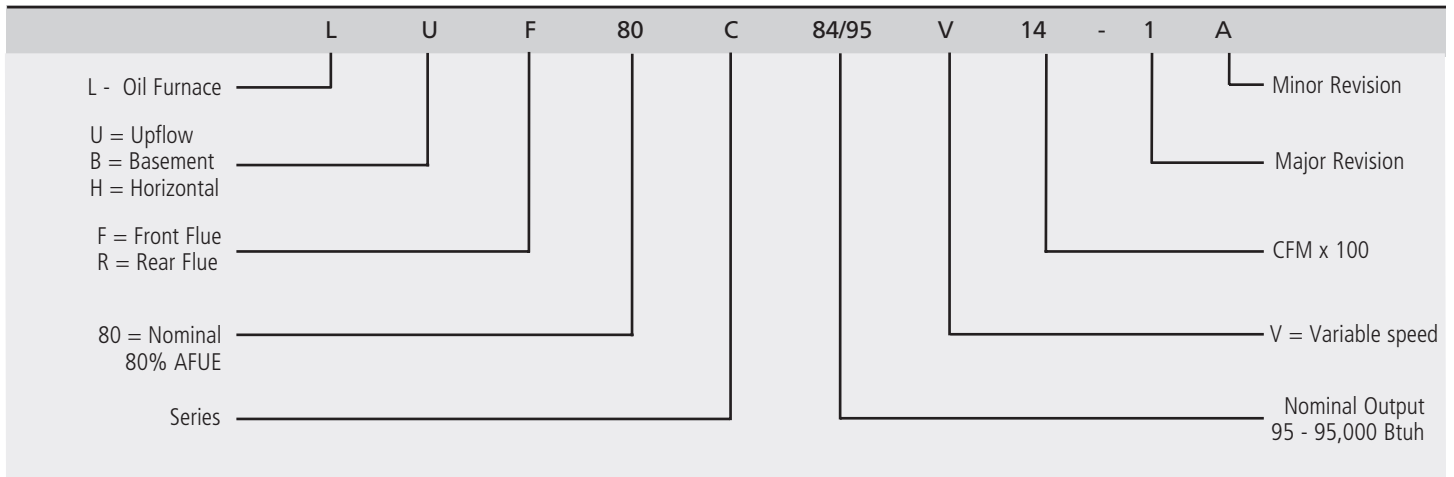


GeniSys™ Advanced Burner Control

(Model: 7505B1500) features the following:

- Programmable valve-on delay and motor-off delay
- Three indicator lights for system monitoring and diagnostics
- Two communication ports for adding alarm contacts, programming display, and/or future wireless communications
- Welded relay protection with redundant motor relays
- Limited reset and limited recycle
- Sleek, modern design
- Technician Pump Prime mode

Model Number Guide



Physical and Electrical Data

Configuration	Model	Nozzle Size	Input (Btuh)	Output (Btuh)	AFUE	Nom. Cooling Cap.	Flue Dia. (in.)	Filter Size (in.)	Volts/Hz/Phase	Max. Time Delay Breaker or Fuse (amp)	Trans. (V.A.)	Shipping Weight (lb.)
Upflow / Highboy	LUF80C57/72V12	.50GPH-80°A	70,000	57,000	83.0	1.5 - 3.0	6	16 X 25	120/60/1	15	40	225
		.65GPH-80°B	90,000	72,000	82.0							
	LUF80C84/95V14	.65GPH-80°B	105,000	85,000	81.0	2.0 - 3.5	6	16 X 25	120/60/1	15	40	225
		.75GPH-80°B	120,000	97,000								
	LUF80C112/125V20	.85GPH-80°B	140,000	113,000	81.0	3.0 - 5.0	6	(2) 16 X 25 ¹	120/60/1	15	40	275
		1.00GPH-80°B	154,000	125,000								
Basement / Lowboy	LBF80C84/95V14	.65GPH-80°B	105,000	85,000	81.0	2.0 - 3.5	6	18 X 19	120/60/1	15	40	250
		.75GPH-80°B	120,000	97,000								
	LBF80C112/125V20	.85GPH-80°B	140,000	113,000	81.0	3.0 - 5.0	6	19 X 21	120/60/1	15	40	285
		1.00GPH-80°B	154,000	125,000								
	LBR80C84/95V14	.65GPH-80°B	105,000	85,000	81.0	2.0 - 3.5	6	18 X 19	120/60/1	15	40	255
		.75GPH-80°B	120,000	97,000								
	LBR80C112/125V20	.85GPH-80°B	140,000	113,000	81.0	3.0 - 5.0	6	19 X 21	120/60/1	15	40	290
		1.00GPH-80°B	154,000	125,000								
Horizontal	LHF80C84/95V12	.65GPH-80°B	105,000	85,000	81.0	1.5 - 3.0	6	N/A	120/60/1	15	40	225
		.75GPH-80°B	120,000	97,000								
	LHR80C84/95V12	.65GPH-80°B	105,000	85,000	81.0	1.5 - 3.0	6	N/A	120/60/1	15	40	225
		.75GPH-80°B	120,000	97,000								

¹ Requires return air be brought to both sides above 1600 CFM

Note: LUF models shipped with filter(s) for side return

All models are rated at 140 psi pump pressure except the LUF80C57/72 which is rated at 100 psi

All models shipped with lower input nozzle installed

Blower Performance Data

Configuration	Model	Motor Size (hp)	Blower Size	Nozzle GPH	Temp. Rise °F	Blower Speed Tap	Heating CFM@ 0.50" ESP	Cooling Adjustment	Cooling CFM @ .50 ext. static pressure in. W.C.			
									Setting "A"	Setting "B"	Setting "C"	Setting "D"
Upflow / Highboy	LUF57/72V12	1/2	10 x 8	---	---	---	---	Nom	1200	1000	800	600
						---	---	(+)	1350	1200	1000	700
						---	---	(-)	1050	850	700	540
				.50	60	D Tap Setting*	750	---	---	---	---	---
				.85	60	C Tap Setting*	1000	---	---	---	---	---
	LUF84/95V14	1/2	10 x 10	---	---	---	---	Nom	1400	1200	1000	800
						---	---	(+)	1500	1400	1200	1000
						---	---	(-)	1200	1000	900	650
				.65	60	D Tap Setting*	1200	---	---	---	---	---
				.75	60	C Tap Setting*	1300	---	---	---	---	---
	LUF112/125V20	3/4	12 x 11	---	---	---	---	Nom	2000	1800	1600	1200
						---	---	(+)	2000	2000	1800	1600
						---	---	(-)	1700	1550	1400	1200
				.85	60	D Tap Setting*	1400	---	---	---	---	---
				1.00	60	B Tap Setting*	1730	---	---	---	---	---
Basement / Lowboy	LBR80C84/95V14	1/2	10 x 9	---	---	---	---	Nom	1400	1200	1000	800
						---	---	(+)	1500	1400	1200	950
						---	---	(-)	1200	1050	860	650
				.65	60	D Tap Setting*	1200	---	---	---	---	---
				.75	60	B Tap Setting*	1450	---	---	---	---	---
	LBR80C112/125V20	1	12 x 10	---	---	---	---	Nom	2000	1800	1600	1200
						---	---	(+)	2100	2000	1800	1350
						---	---	(-)	1650	1500	1350	950
				.85	60	D Tap Setting*	1450	---	---	---	---	---
				1.00	60	B Tap Setting*	1730	---	---	---	---	---
	LBF80C84/95V14	1/2	10 x 9	---	---	---	---	Nom	1400	1200	1000	800
						---	---	(+)	1500	1400	1200	950
						---	---	(-)	1200	1050	860	650
			10 x 9	.65	60	D Tap Setting*	1200	---	---	---	---	---
			10 x 9	.75	60	B Tap Setting*	1450	---	---	---	---	---
	LBF80C112/125V20	1	12 x 10	---	---	---	---	Nom	2000	1800	1600	1200
						---	---	(+)	2100	2000	1800	1350
						---	---	(-)	1650	1500	1350	950
			12 x 10	.85	60	D Tap Setting*	1450	---	---	---	---	---
			12 x 10	1.00	60	B Tap Setting*	1730	---	---	---	---	---
Horizontal	LHF80C84/95V12	1/2	10 x 10	---	---	---	---	Nom	1200	1000	800	600
						---	---	(+)	1350	1125	900	700
						---	---	(-)	975	830	670	525
			10 x 10	.65	70	D Tap Setting*	1000	---	---	---	---	---
			10 x 10	.75	70	B Tap Setting*	1200	---	---	---	---	---
	LHR80C84/95V12	1/2	10 x 10	---	---	---	---	Nom	1200	1000	800	600
						---	---	(+)	1350	1150	900	675
						---	---	(-)	1000	850	675	500
			10 x 10	.65	60	D Tap Setting*	900	---	---	---	---	---
			10 x 10	.75	60	B Tap Setting*	1100	---	---	---	---	---

Note: All units shipped with low fire nozzle.

* Required tap to maintain recommended rise.

Accessories

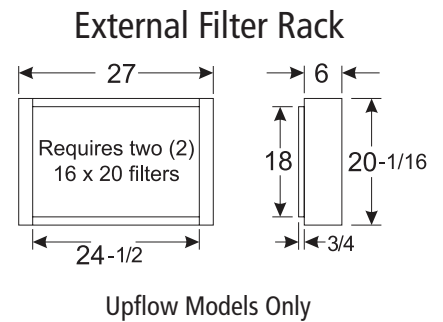
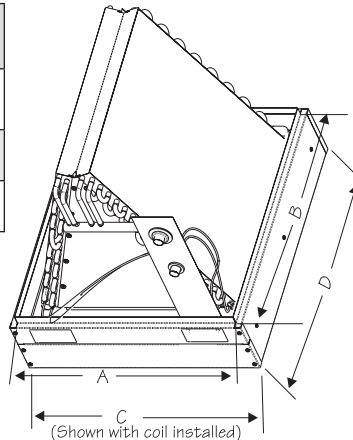
Description	Used with	Catalog number	Kit number
Clean Out Kit	All models	1.841025	ABRSH380-3
Field Controls Side Wall Vent Kit ¹	All models		ASVNT523
Evaporator Coil Cabinet	LUF57/72/84/95 with 15-1/2" - 17-1/2" wide coil LBF-R8084/95 to 15-1/2" - 17" wide coil	1.841175	AGOILKDCC19
Evaporator Coil Cabinet	LUF84/95 with 21" - 23" wide coil LBF-R8084/95 to U2E58C & LBF-R112/125 to 21" wide coil	1.841176	AGOILKDCC22
Evaporator Coil Cabinet	LUF112/125 with 21" - 23" wide coil LBF-R112/125 to U2E60D & LBR140/168 to 21" - 23" wide coil	1.841179	AGOILKCDC27
Combustion Air Kit	All Models	1.841038	ABOOT571
Clean Out Cap Kit	All Models	1.841037	ACAP570
Combustible Floor Base	LHF/R84/95	1.841022	ABASE537-1
Vestible Kit	LHF84/95	1.841052	AVEST547-2
External Filter Rack	All LUF models	1.841005	AFILTHA7-2
Filter Kit	LHF84/95	1.841050	AFILT535-2

¹ This can be ordered from Field Controls, part number SWG-5-CK61.

Accessories Dimensions (in.)

Evaporator Coil Cabinet

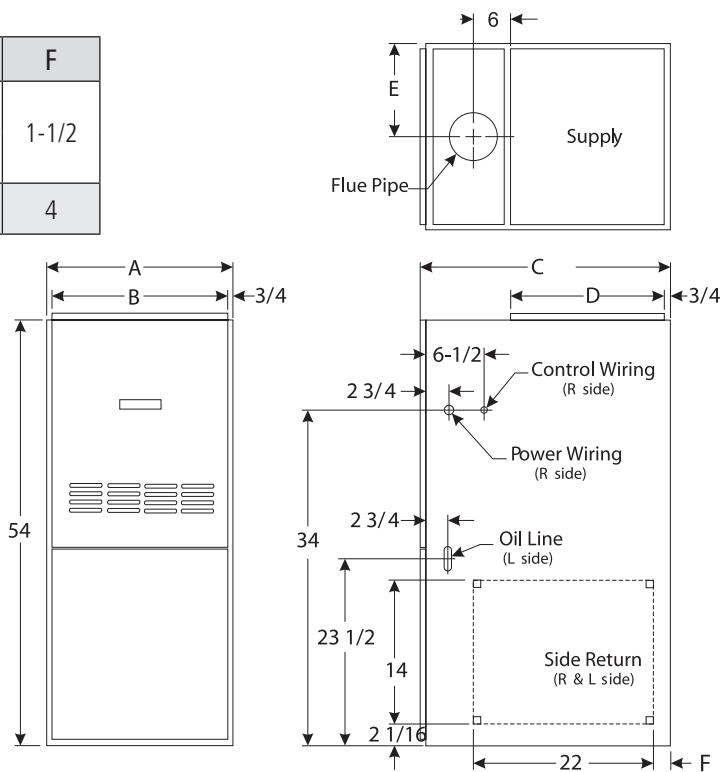
Model	A	B	C	D
AGOILKDCC19	18-1/2	21-1/8	19-1/2	22-1/8
AGOILKDCC22	21-1/2	22-1/4	22-1/2	23-1/4
AGOILKDCC27	25	24-1/4	26	25-5/8



Dimensions (in.)

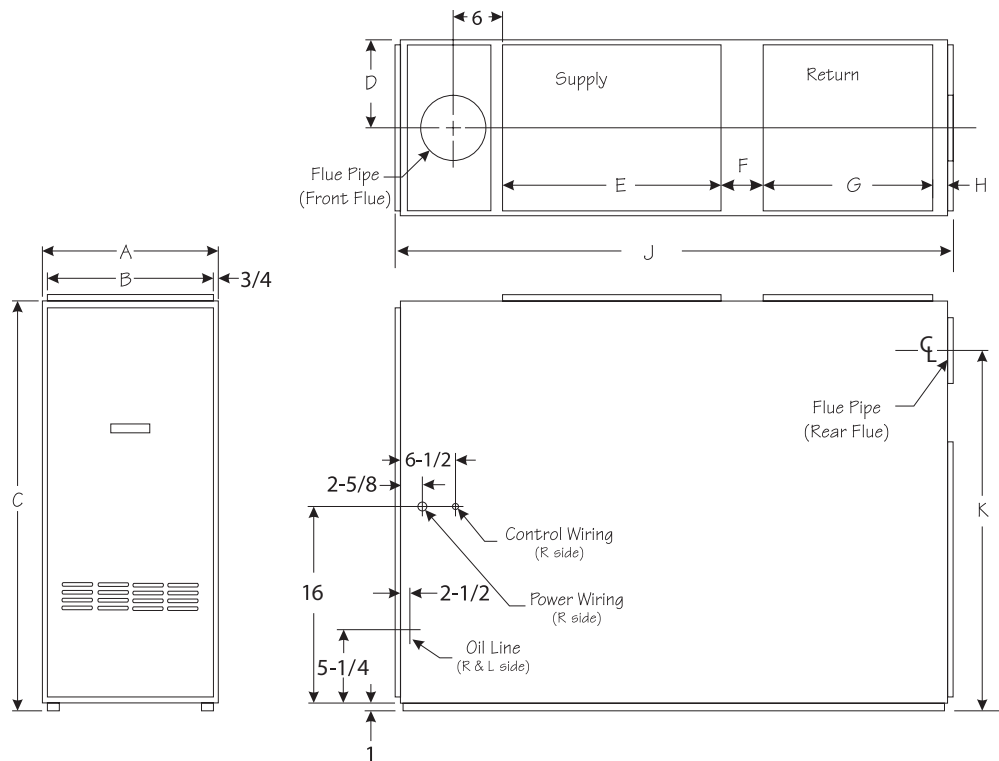
Upflow /Highboy

Model	A	B	C	D	E	F
LUF80C57/72V12	19-1/2	18	30-5/8	19-5/8	9-3/4	1-1/2
LUF80C84/95V14						
LUF80C112/125V20	22-1/2	21	33-1/8	22-1/8	11-1/4	4



Basement / Lowboy

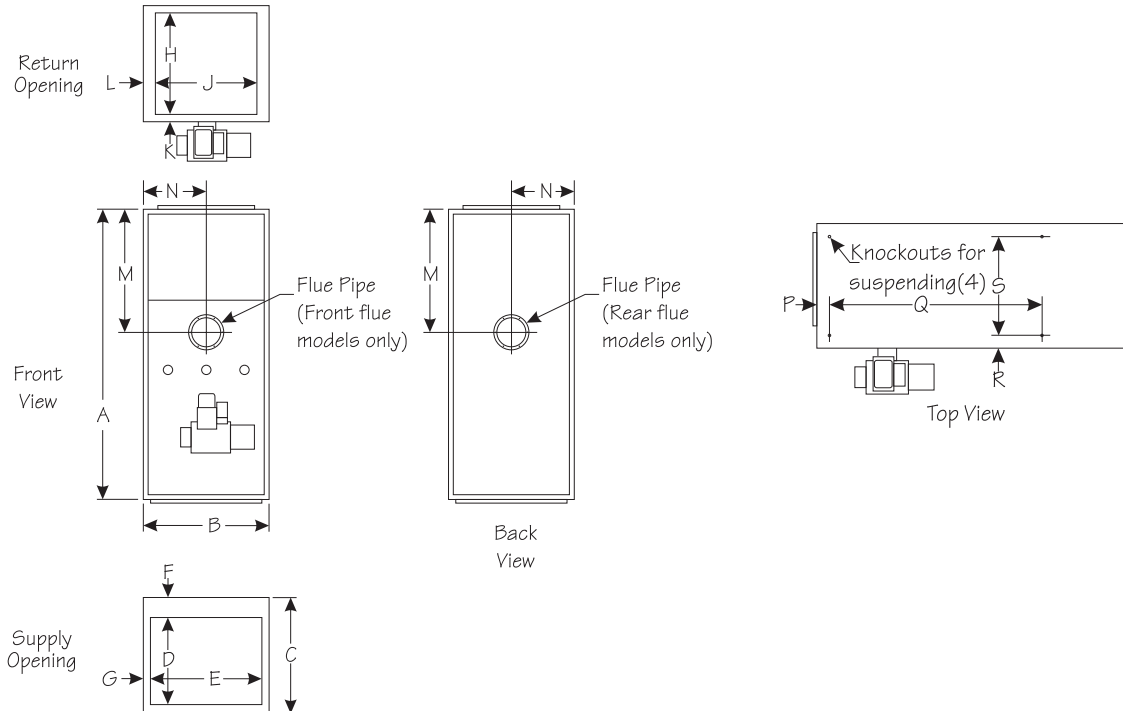
Model	A	B	C	D	E	F	G	H	J	K
LBF80C84/95V14	19-1/2	18	37	9-3/4	21	3-1/4	16	1-1/2	52	N/A
LBF80C112/125V20	22-1/2	21		11-1/4						
LBR80C84/95V14	19-1/2	18		N/A						27-5/8
LBR80C112/125V20	22-1/2	21		N/A						27-5/8



Dimensions (in.)

Horizontal

Model	A	B	C	D	E	F	G	H	J	K	L	M	N	P	Q	R	S
LHF80C84/95V12	59	20-1/2	20-1/2	18-1/4	18-1/4	1-1/4	1-1/4	18	18	1-1/4	1-1/4	32-1/2	10-1/4	3	41-1/2	3	14-1/2
LHR80C84/95V12																	



Clearances to Combustibles (in.)

Upflow

Model	Front*	Sides	Rear	Floor	Above	Flue
LUF80C57/72V12	4	0	0	Combustible	2	6
LUF80C84/95V14						
LUF80C112/125V20						

*For service requirements normally 24"

Basement

Model	Front	Sides	Rear	Floor	Above	Flue
LBF80C84/95V14	4	6	24	Combustible	2	9
LBF80C112/125V20						
LBR80C84/95V14						
LBR80C112/125V20						

Counterflow

Model	Front	Above	Rear	Flue	Sides	Floor
LHF80C84/95V12	16	0	1	7	1	Non-Combustible

Horizontal

Model	Front	Above	Rear	Flue	Bottom
LHF80C84/95V12	24	1	1	7	1
LHR80C84/95V12	24	1	24	7	1



(800) 448-5872

www.armstrongair.com

All specifications and illustrations
subject to change without notice
and without incurring obligations.