

Central Brass

C O M P A N Y

A Division of Pioneer Industries, Inc.

Installation Guide

Two/Three Handle Trim Kit :

- TC-2
- TC-2-L3
- TC-2-C3
- TC-3
- TC-3-L3
- TC-3-C3
- T-2
- T-2-L3
- T-2-C3
- T-3
- T-3-L3
- T-3-C3



Thank You For Choosing Central Brass Products

Thank you for purchasing this quality product.

Central Brass products are rigorously tested to provide long service under normal conditions. Prior to installation, familiarize yourself with this products diagram.

Make sure that you have all of the illustrated parts for your Central Brass product before installation.

Care Instructions

Central Brass products are designed and engineered under strict quality standards. The Central Brass Collection of PVD finishes feature a strong and durable surface that will keep your fixture looking exquisite for a lifetime.

To ensure the beautiful appearance of your Central Brass product, please adhere to the following simple care instructions:

- Use clean water to clean the surface of the faucet and dry with a 100% cotton cloth.
- You may also use any non-abrasive wax, along with a soft cotton cloth to brighten the surface and provide future protection of the finish.
- Do not use detergents, harsh cleaners, abrasive cleaners, cloths, and cleaning agents.

Note:- This is not a pressure balance valve. It may not meet local code.

CENTRAL BRASS LIMITED WARRANTY

The Central Brass Company provides to the original consumer the following warranties for Genuine Central Brass manufactured products and components used in commercial or residential applications.

Central Brass Company will replace, free of charge, to the original consumer purchaser, any and all parts that prove defective under normal installation, use, and service. This warranty does not cover damage or defects due to normal wear and tear, misuse, abuse, accident, or improper installation. Replacement parts can be obtained from your local dealer or directly from Central Brass Company. Central Brass Company recommends using a certified plumber for all faucet installation and repair. Dated proof of purchase must accompany all warranty claims.

FAUCET WARRANTY

The Faucet, defined as any metal cast, forged, stamped or formed portion of the product, not including moving parts or other components covered under other Central Brass warranties, is warranted against manufacturing defects for the life of the product.

CARTRIDGE WARRANTY

Genuine Central Brass cartridges incorporated in Central Brass products are warranted against manufacturing defects for a period of five (5) years from the date of purchase.

SENSOR FAUCETS

The mechanics of the Central Brass Sensor Faucets are warranted for five (5) years from the date of installation. The electronics and solenoid are warranted for a period of one (1) year from the date of installation.

FINISH WARRANTY - COMMERCIAL

PVD finishes installed in public or commercial areas are warranted not to corrode, tarnish or discolor for a period of five (5) years from date of purchase.

FINISH WARRANTY – RESIDENTIAL

PVD finishes installed in residential use applications are warranted not to corrode, tarnish or discolor for the life of the product.

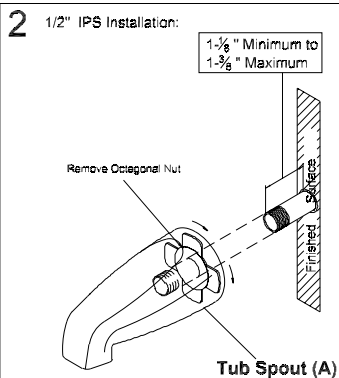
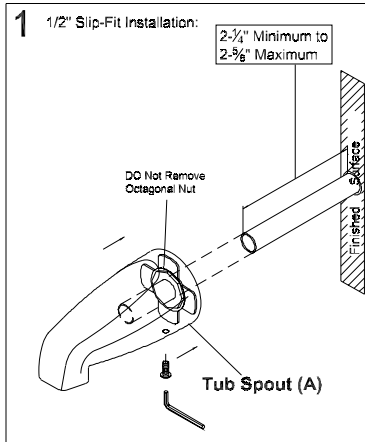
Trim Kit Installation

1. For Slip-Fit Tub Spout Installation:

- (A) The 1/2" nominal copper tube must be cut with a minimum length of 2-1/4" to a maximum length of 2-5/8" from finished tub or wall surface.
- (B) The end of copper tube should be chamfered free of any burrs to prevent cutting or nicking o-ring inside the spout. The outside surface need to be sanded free from nicks and scratches.
- (C) Press and twist the spout over copper tube flush with the finished tub or wall surface.
- (D) Tighten the set screw, but do not overtighten.

2. For IPS Tub Spout Installation:

- (A) The 1/2" threaded pipe nipple must be kept with a minimum length of 1-1/8" to maximum length of 1-3/8" from finished tub or wall surface.
- (B) Remove octagonal nut inside the spout by using nose plier.
- (C) Apply teflon tape at the threaded connection. Screw tub spout onto the threaded pipe nipple and tighten by strap wrench.

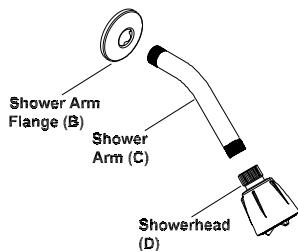


Trim Kit Installation

Caution:- To avoid plugging the showerhead spray outlet use teflon tape on the shower arm threads.

3. Use silicon to caulk the back of the shower arm flange(B). Slide the shower arm flange(B) over the shower arm(C). Apply the teflon tape on both threaded ends of shower arm(C) and install the shower arm(C) to the shower elbow. Carefully tighten with a clean strap wrench. Press the shower arm flange(B) against the finished wall. Flush out the system. Thread the showerhead(D) to the shower arm(C).

3

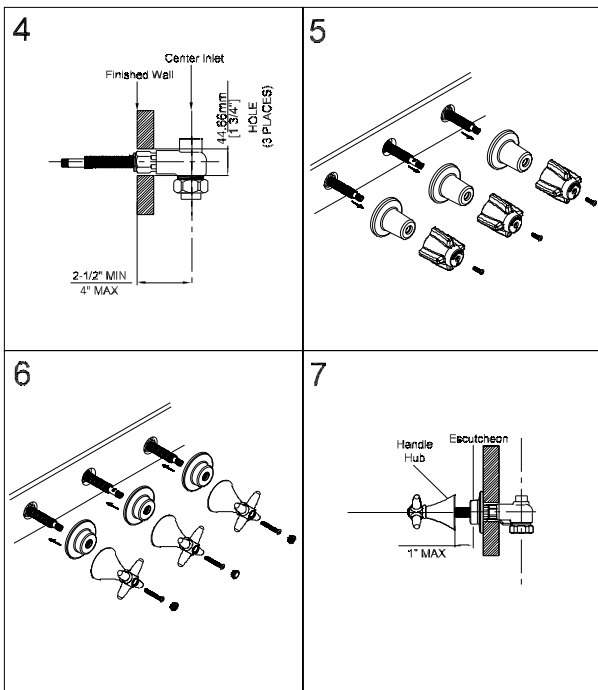


Trim Kit Installation

4. Install the replacement escutcheons and handles onto the existing stems.

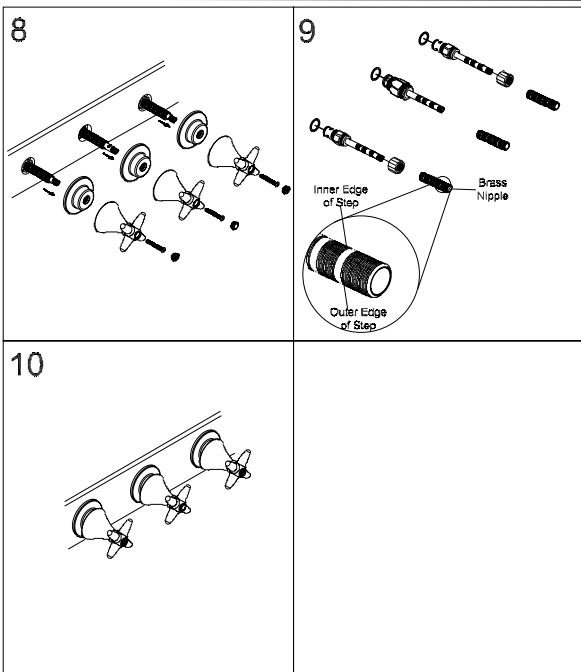
For L3 and C3 Handles (Installation Steps 4 to 10) :-Stems are for using when the distance from the center of valve inlets must be more than 2-1/2" and less than 4" from the finished wall (Fig 4).

5. Remove the current handles and escutcheons from the installed valve (Fig 5).
6. Replace all existing stem kits with new stem kits. Install the replacement escutcheons and handles onto the existing stems (Fig 6).
7. Measure the distance between the handle hubs and escutcheons to determine where to cut the replacement stem post and brass nipple (Fig 7).



Trim Kit Installation

8. Remove the handles, escutcheons along with the installed brass stems from the valve (Fig 8).
9. Using the distance acquired from step 4, mark the distance from the end of the replacement brass nipple. Carefully cut the nipple at the outer edge of the step closest to the mark (Fig 9). Carefully cut stem post similarly but at the inner edge of the step. Avoid cutting the spline and threaded area. The cut must be straight and all burrs removed.
10. Install the replacement stems, nipples, escutcheons and handles (Fig 10). Use the appropriate length screws provided to install the handles. Ensure that each handle operates freely.



For more care information or trouble shooting inquiries about your Central Brass product, please see the contact information on the back page.

Central Brass

C O M P A N Y

A Division of Pioneer Industries, Inc.

6892 Snowville Road | Brecksville, Ohio 44141
Telephone: (800) 321-8630 | (216) 883-0220 | Fax: (800) 338-9414
Hours: M - F, 7:30am to 5:00pm EST
www.centralbrass.com