

UP548T* 3/8"-2"



WQA tested and Certified
against NSF/ANSI 372
for "lead free" compliance.

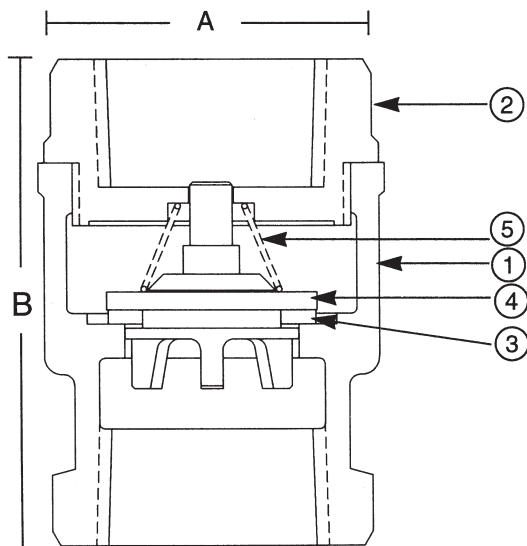
**Bronze Spring Check Valve
For Potable Water
250 PSI Non-Shock Cold Water, Oil or Gas
Bronze Disc
Threaded Ends**

FEATURES

- BRONZE BODY
- THREADED ENDS
- BRONZE SPRING
- TEFLON DISC
- BRONZE DISC HOLDER
- 100% FACTORY TESTED
- SILENT CLOSING
(minimizes water hammer)

MATERIAL LIST

NO.	PART	MATERIAL	SPECIFICATION
1	Body	Cast Bronze	ASTM B584 C89833
2	Tail Piece	Cast Bronze	ASTM B584 C89833
3	Disc	PTFE	
4	Disc Holder	Cast Bronze	ASTM B584 C89833
5	Spring	Bronze	ASTM B103 C52100



*Same design as Hammond UP943

Note: Check Valves may be installed in both the horizontal and vertical lines with upward flow or in any intermediate position.

DIMENSIONS - INCHES / MILIMETERS					
UNITS	SIZE	A	B	Weight	C _v
Inches	3/8	1.22	1.97	0.38	2.5
mm	9.53	30.96	50.01		
Inches	1/2	1.22	2.09	0.44	4.1
mm	12.70	30.96	53.19		
Inches	3/4	1.50	2.31	0.57	7.6
mm	19.05	38.10	58.75		
Inches	1	1.91	2.66	0.89	13.0
mm	25.40	48.41	67.46		
Inches	1 1/4	2.16	3.09	1.28	23.0
mm	31.75	54.76	78.59		
Inches	1 1/2	2.59	3.31	1.72	31.0
mm	38.10	65.89	84.15		
Inches	2	3.13	3.78	2.58	54.0
mm	50.80	79.38	96.04		

* International VALVE

Milwaukee Valve Company
16550 W. Stratton Drive
New Berlin, WI 53151
Phone: 262-432-2700
Fax: 262-432-2701

Note: Lead free refers to the wetted surface of the pipe, fittings and fixtures in potable water systems that have a weighted average lead content ≤0.25%. Source: California Health and Safety Code (116875).

The information presented on this sheet is correct at the time of publication. Milwaukee Valve reserves the right to change design, and/or material specifications without notice. For the Installation, Operation and Maintenance Manual (IOM) see the Technical/Service Information section on our website. For the most current information access www.milwaukeevalve.com

