

## GE TECMate Pro™ Service Tool



The Tecmate Pro™ Service Tool, MARS stock #08500 is the latest advance in ECM technology developed by and for Genteq Motors. The Tecmate allows the service technician to analyze a Genteq ECM motor independently of the HVAC system in which it is installed. The Tecmate can test all the basic settings of a Genteq ECM motor, and can detect and isolate motor failures from HVAC system failures.

Genteq is the leader in ECM motor technology. ECM motor applications are a fast growing segment of the residential and light commercial HVAC market. Genteq's advanced designs in ECM motors are at the forefront of high efficiency equipment design.

### Compact

### Easy To Use

See Additional ECM Accessories on page 48



MARS NO.	DESCRIPTION
08500	TECMate Pro ECM Motor Tester

## Broad Ocean ECM Motor Tester (Digimotor Test Tool)

### Save time and money with the Broad Ocean ECM Motor Tester

- Isolates any issues to either the motor or the control board and the control wiring

**NOTE:** This tool is for Broad Ocean OEM Digi-Motors only. This tool is not compatible with Azure®.

### Kit Contents:

- Broad Ocean ECM Tool
- Type A test Connector (Furnaces, AH & Packaged)
- Type B Test Connector (Packaged Units)
- Type C Test Connector (Air Handlers)
- Type D Test Connector (Outdoor Condenser Fan Motors)



MARS NO.	DESCRIPTION	MARS PACK
08503	Broad Ocean ECM Motor Tester	1

## 760-ECM Motor Speed Controller

The 760-ECM motor speed controller is designed to provide manually adjustable proportional speed control for all sizes and voltages of ECM DC Brushless motors.

Manual speed control is accomplished by adjusting the control pot in the clock-wise direction to increase motor speed. Adjusting the pot in the counter clockwise direction will slow down and eventually stop the motor as the PWM signal is removed.

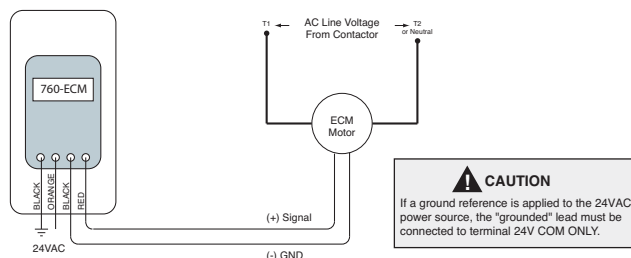
The 760-ECM is line voltage independent and requires only a 24VAC supply. This unit is fully enclosed and can be mounted in standard electrical boxes.

Variable speed control is accomplished via a Pulse Width Modulated (PWM) output signal. The PWM signal operates at a nominal 13.5VDC at 80Hz and is capable of sourcing up to 5mA drive current to drive a single motor.



### Specifications:

- Motor speed: Manual adjustable
- Input voltage: 24VAC (+20%/-10%)
- Output: 0% to 100% PWM @ 80 Hz
  - 13.5VDC, 5mA (max.)
  - Max wire length (twisted pair) 100 ft.
- Humidity: 95% non-condensing
- Operating ambient temperature: 32°F - 120° F
- Dimensions (L x W x H): 4.25" x 2.40" x 1.25"



MARS NO.	DESCRIPTION	MARS PACK
08032	ECM Motor Manual Speed Controller	1