



# PRO SERIES

Hardest Working Brand in the Business



# The Toilet Repair Experts

## The Most Versatile Fill Valve On Your Truck

PRO45U is the first fill valve built to fit every toilet out there - from the old 5 GPF to the new 1.28 GPF HET toilets to specialty toilets like the TOTO® Drake and Kohler® Cimarron. The PRO45U restores them to original factory specifications thanks to seven refill diverter inserts and our patented adjustable water-saving roller clamp. Now, professionals don't have to worry about having the right product on their truck - With the PRO45U, they have the right fill valve for any toilet.

### 5 year warranty

For all two-piece toilets and most one-piece toilets

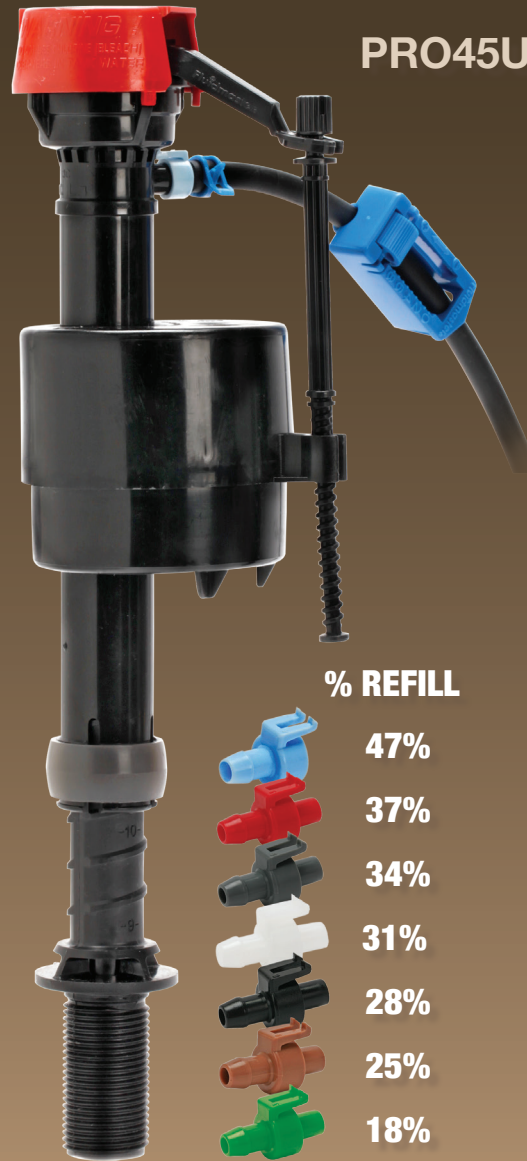
PRO45U refill diverter inserts and adjustable water-saving roller clamp allows toilet to be set to optimal factory spec for bowl refill

Ultra-quiet operation

Minimal water hammer

Instructions include cross reference sheet for over 100 toilets

Found only where PRO Series is sold



**% REFILL**

**47%**

**37%**

**34%**

**31%**

**28%**

**25%**

**18%**

### PRO45 SERIES FILL VALVES

MODEL NUMBER	PRODUCT NAME	CASE QTY	CASE DIMENSIONS W/D/H (INCHES)	CUBIC FEET	CASE WEIGHT (LBS)	UPC	SCCI 2 OF 5
PRO45	FILL VALVE	25	16 X 16 X 13	1.93	16	0 39961 45200 9	100 39961 45002 6
PRO45B	FILL VALVE W/ BRASS SHANK	25	16 X 16 X 13	1.93	18	0 39961 45500 0	100 39961 45245 7
PRO45U	FILL VALVE W/ INSERTS	25	16 X 16 X 13	1.93	16	0 39961 45544 4	100 39961 15024 7

**Restore every toilet you service to original spec with the PRO45U**

For complete toilet cross reference list, please visit <http://fluidmasterpro.com/pro-universal-fill-valve.html>

# PRO45 SERIES FILL VALVES



## PRO45 Fill Valve

5 year warranty

- Ultra-quiet operation
- Minimal water hammer
- Adjustable height
- Code approved

## PRO45B Fill Valve with Brass Shank

5 year warranty

- Heavy-duty brass shank
- Ultra-quiet operation
- Minimal water hammer
- Adjustable height
- Code approved



**EXCLUSIVELY  
FOR PROS**

The Fluidmaster® PRO Brand was developed for the hard working plumbing professional who requires high quality, professional grade products that have been engineered for reliability and durability.

FluidmasterPRO.com



PRO FILL VALVES

# The Toilet Repair Experts

## Direct Replacement Fill Valves for KOHLER® TOILETS

Replace the fill valve on some of Kohler's® most popular 1-piece toilets. Available with or without the riser, this valve has an adjustable refill to restore the toilet to factory specs. Found only where PRO Series is sold.

### 5 year warranty

Comes either with riser or by itself for quick replacement

High refill port and refill adjuster ensure efficient, consistent performance

Fill valve fits select Kohler® toilets



**PRO747  
Fill Valve**



**PRO747K  
Fill Valve  
with Riser**

### PRO747 FILL VALVES

MODEL NUMBER	PRODUCT NAME	CASE QTY	CASE DIMENSIONS W/D/H (INCHES)	CUBIC FEET	CASE WEIGHT (LBS)	UPC	SCCI 2 OF 5
PRO747	FILL VALVE FOR KOHLER® TOILETS	10	9 X 7 X 13	0.48	6	0 39961 00023 1	100 39961 00023 8
PRO747K	FILL VALVE WITH RISER FOR KOHLER® TOILETS	10	14 X 10 X 13	1.05	8	0 39961 00024 8	100 39961 00024 5

# PRO FILL VALVE KITS & REPAIR PARTS

## PRO45C Fill Valve & Flapper Kit

5 year warranty



- PRO45 Fill Valve and PRO54 Flapper
- Fixes two most common toilet issues
- Code approved



## PRO45BW501 Fill Valve & Flapper Kit

5 year warranty



- The PRO45B is the most trusted fill valve in the industry!
- Solid frame flapper prevents twisting and ghost flush
- Code approved

## PRO45K Complete Kit

5 year warranty



- Complete kit for total overhaul of tank components
- Includes PRO45 Fill Valve, PRO57K Flush Valve with PRO55 Adjustable Flapper, bolts, gasket and a PRO61 Tank Lever
- Code approved

### ≡ FILL VALVE KITS

MODEL NUMBER	PRODUCT NAME	CASE QTY	CASE DIMENSIONS W/D/H (INCHES)	CUBIC FEET	CASE WEIGHT (LBS)	UPC	SCCI 2 OF 5
PRO45C	COMBO KIT FILL VALVE AND 2" FLAPPER KIT	10	9 X 17 X 13	1.15	9	0 39961 45300 6	100 39961 45003 3
PRO45BW501	FILL VALVE AND 2" FLAPPER	10	9 X 17 X 13	1.15	10	0 39961 01328 6	100 39961 01328 3
PRO45K	COMPLETE KIT	10	16 X 17 X 14	2.20	17	0 39961 45400 3	100 39961 45045 3

**HARDEST  
WORKING**  
BRAND IN THE BUSINESS

FluidmasterPRO.com



PRO FILL VALVES

### PRO FLUSH VALVES

Provide your customer a PRO flush with a PRO57. Made from durable ABS plastic, the PRO57 is made to last in any water condition. It also comes with a PRO55 Flapper, which can be adjusted for optimal water volume.

The PRO57K is a kit that includes solid brass bolts and a tank-to-bowl gasket, giving you everything you need for a successful installation.

Longer-life, kink-free stainless steel flapper chain

Corrosion-resistant materials withstand deterioration

Adjustable float on the chlorine-resistant flapper controls flush volume for optimal performance

Fits most toilets



### PRO57 2" Flush Valve

**5 year warranty**

- Includes PRO55 Adjustable Flapper with float



### PRO57K 2" Flush Valve Kit

**5 year warranty**

- Everything needed for a complete flush valve replacement
- Includes PRO55 Adjustable Flapper with float
- Solid brass bolts, stainless steel nuts and washers, tank-to-bowl gasket

### PRO FLUSH VALVES

MODEL NUMBER	PRODUCT NAME	CASE QTY	CASE DIMENSIONS W/D/H (INCHES)	CUBIC FEET	CASE WEIGHT (LBS)	UPC	SCCI 2 OF 5
PRO57	2" FLUSH VALVE	10	9 X 17 X 13	1.15	6	0 39961 57500 5	100 39961 57005 2
PRO57K	2" FLUSH VALVE KIT	10	9 X 17 X 13	1.15	10	0 39961 57600 2	100 39961 57002 1

# PRO SERIES REPAIR PARTS



## PRO REPLACEMENT SEAL MULTI-PACKS FOR SPECIALTY FLUSH VALVES

Prevent or stop leaks from specialty flush valves

Silicone seals - last 10x longer than standard material

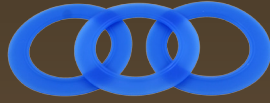
Chlorine and hard water resistant



### PROS3KP15 Flush Valve Seals

**1 year warranty**

- Fits: Kohler® AquaPiston & American Standard® Champion 3



### PROS3AELP15 Flush Valve Seals

**1 year warranty**

- Fits: American Standard® Champion 4, 4 Max, Pro & Eljer® Titan 4



### PROS3MAP15 Flush Valve Seals

**1 year warranty**

- Fits: Mansfield® #210 & 211 Flush Valves

## MISC. REPLACEMENT PARTS

### PRO22 Fill Valve Seal

**1 year warranty**



- Replacement seal for PRO45, 400A & 747 Fill Valves



### PRO35 Fill Valve Cap

**1 year warranty**

- The PRO35 replacement cap is a quick fix for a broken or worn PRO45 cap. Replacement seal already installed in the cap
- Fits PRO45 & PRO45B fill valves

## PRO SERIES REPAIR PARTS

MODEL NUMBER	PRODUCT NAME	CASE QTY	CASE DIMENSIONS W/D/H (INCHES)	CUBIC FEET	CASE WEIGHT (LBS)	UPC	SCCI 2 OF 5
PROS3KP15 (YELLOW)	KOHLER FLUSH VALVE SEALS	15	7 X 10 X 9	.36	1	0 39961 01551 8	100 39961 01551 5
PROS3AELP15 (BLUE)	AMERICAN STANDARD FLUSH VALVE SEALS	15	7 X 10 X 9	.36	2	0 39961 01549 5	100 39961 01549 2
PROS3MAP15 (RED)	MANSFIELD FLUSH VALVE SEALS	15	7 X 10 X 9	.36	1	0 39961 01552 5	100 39961 01552 2
PRO22	FILL VALVE SEAL	10	5 X 6 X 5	0.09	0.3	0 39961 15022 6	100 39961 15022 3
PRO35	FILL VALVE CAP	10	5 X 8 X 8	0.19	0.9	0 39961 15035 6	100 39961 15035 3

FluidmasterPRO.com



# The Toilet Repair Experts

## FLAPPERS

Fluidmaster® PRO Series Flappers are built to last. Made from high-quality rubber compounds, the PRO flappers can stand up to the harshest water conditions. The kink-free chain helps eliminate the need for homeowners to jiggle the handle to get the toilet to stop running. Our flappers are the only flappers with Microban® and are designed exclusively for professionals.



PROTECTION THAT LIVES ON  
**MICROBAN**®

## The Only Flapper with Microban®

PRO Series flappers made with Microban® technology are more resistant to premature deterioration than other flappers. The Microban additive operates on the cellular level to prevent uncontrolled growth of microorganisms that can damage the flapper.

Prevents premature flapper deterioration due to bacteria

Built-in technology works continuously for the lifetime of the flapper

Anti-microbial protection won't wash or wear off

### PRO FLAPPERS

MODEL NUMBER	PRODUCT NAME	CASE QTY	CASE DIMENSIONS W/D/H (INCHES)	CUBIC FEET	CASE WEIGHT (LBS)	UPC	SCCI 2 OF 5
PR053	HEAVY DUTY 2" FLAPPER	20	13 X 23 X 7	1.21	4	0 39961 53500 9	100 39961 53005 6
PR054	CHLORINE RESISTANT HEAVY DUTY 2" FLAPPER	20	13 X 23 X 7	1.21	4	0 39961 54500 8	100 39961 54005 5
PR055	ADJUSTABLE HEAVY DUTY 2" FLAPPER	20	13 X 23 X 7	1.21	4	0 39961 55500 7	100 39961 55005 4
PR055R	ADJUSTABLE HEAVY DUTY 2" FLAPPER (3-PACK)	8 X (3 PK)	11 X 24 X 11	1.68	5	0 39961 55600 4	100 39961 55025 2
PR056	ADJUSTABLE 2" FLAPPER	20	13 X 23 X 7	1.21	4	0 39961 01090 2	100 39961 01090 9
PR058	ADJUSTABLE 3" FLAPPER	10	12 X 19 X 6	.79	3	0 39961 01091 9	100 39961 01091 6



# PRO SERIES FLAPPERS

## PRO53

Universal Heavy Duty Flapper

1 year warranty

- Best for 3.5 GPF+
- Pipe adapter
- Kink-free metal chain
- Built-in Microban technology
- Replaces Korky® 54BP flappers



## PRO56

Universal Solid Frame Adjustable Flapper

5 year warranty

- Best for 1.28 - 3.5 GPF+
- Adjusts to optimize toilet performance
- Saves water
- Chlorine resistant
- Solid frame
- Kink-free metal chain
- Built-In Microban technology
- Replaces Korky® 100BP flappers



## PRO54

Universal Chlorine-Resistant Heavy Duty Flapper

5 year warranty

- Best for 3.5 GPF+
- Chlorine resistant
- Pipe adapter
- Kink-free metal chain
- Built-In Microban technology
- Replaces Korky® 2001BP flappers



## PRO58

Universal 3" Adjustable Flapper

10 year warranty

- Fits 3" flush valves
- High quality silicone seal
- Adjusts to optimize toilet performance
- Saves water
- Arms adjust to fit Kohler 3" Flush Valves
- Chlorine resistant
- Solid frame
- Kink-free metal chain
- Replaces Korky® 3060BP flappers



## PRO55 / PRO55R (3-PACK)

Universal Adjustable Heavy Duty Flapper

5 year warranty

- Best for 1.6 GPF
- Adjustable float
- Chlorine resistant
- Saves water
- Pipe adapter
- Kink-free metal chain
- Built-In Microban technology
- Replaces Korky® 2004BP flappers



PRO FLAPPERS

FluidmasterPRO.com



# The Toilet Repair Experts

## WAX-FREE GASKETS

Professionals know that the key to a good toilet installation is getting a good seal. With Fluidmaster® PRO Series wax-free gaskets, you can install a toilet knowing that you're getting the best seal possible, with the least hassle.



## PRO7530 Better Than Wax™ Toilet Seal

### 10 year warranty

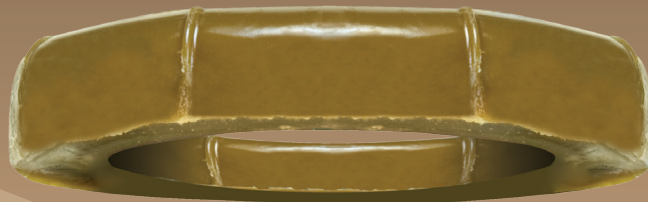
- No wax, no mess, won't melt in hot conditions
- Replaces traditional bowl wax
- Seal can be repositioned and reused
- Stackable
- Plunging won't cause leaks like traditional wax
- Fits 3" & 4" floor drains
- Hardware sold separately

## TOILET BOWL WAX

Made from high-quality wax, PRO Series Wax comes in all the most popular varieties: with and without flange, with and without installation hardware, extra-thick and reinforced.

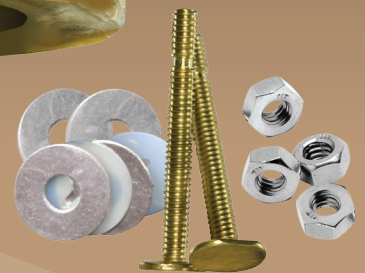
The PRO Series Wax line also includes special rings for back outlet toilets (PRO70B-R) and for urinals (PRO70U-R).

Most PRO Series Wax products come packaged in an easy-to-remove tray that will maintain the wax's shape in even the harshest conditions.

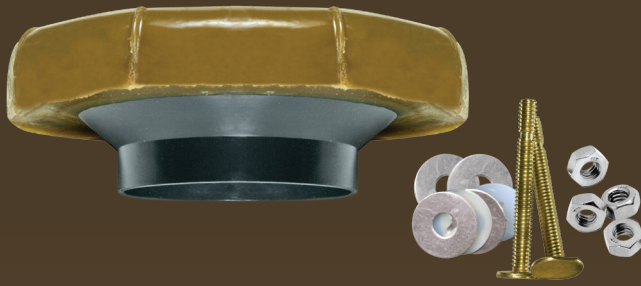


## PRO7K0 Bowl Wax Kit

- Includes two solid brass toilet bolts & double stainless steel hexnuts for "Double Nut" or "Speed Nut" installation
- Fits 3" and 4" floor drains




# PRO TOILET BOWL WAX & WAX-FREE GASKETS



## PRO7KF Bowl Wax Kit w/Flange

- PRO7KF includes flange for better alignment
- Includes two solid brass toilet bolts & double stainless steel hexnuts for “Double Nut” or “Speed Nut” installation
- Fits 3” and 4” floor drains

MODEL NUMBER	PRODUCT NAME	COMPARE TO	CASE QTY	CASE DIMENSIONS W/D/H (INCHES)	CUBIC FEET	CASE WEIGHT (LBS)	UPC	SCCI 2 OF 5
PRO7530P24	 BETTER THAN WAX™ TOILET SEAL (NO BOLTS)	N/A	24	12 X 13 X 13	1.17	7	0 39961 01438 2	100 39961 01438 9
PRO7530-4P6	 BETTER THAN WAX™ TOILET SEAL MULTI-PACK (4 PACK, NO BOLTS)	N/A	6	12 X 11 X 17	0.58	7	0 39961 01828 1	100 39961 01828 8
PRO700	 BOWL WAX (NO BOLTS)	BOL-WAX® NO.1	48	19 X 13 X 11	1.57	20	0 39961 73203 3	100 39961 00017 7
PRO7K0	 WAX KIT	BOL-WAX® NO.1	48	19 X 13 X 11	1.57	18	0 39961 04302 3	100 39961 07510 6
PRO70F	 WAX W/FLANGE (NO BOLTS)	NO-SEEP® NO.1	24	13 X 12 X 12	1.08	8	0 39961 73208 8	100 39961 07517 5
PRO7KF	 WAX KIT W/FLANGE	NO-SEEP® NO.1	24	13 X 12 X 12	1.08	14	0 39961 73204 0	100 39961 00018 4
PRO70F-R (REINFORCED)	 REINFORCED WAX W/FLANGE (NO BOLTS)	NO-SEEP® NO.3	30	19 X 10 X 12	1.32	15	0 39961 73209 5	100 39961 07518 2
PRO80F	 EXTRA THICK WAX W/FLANGE (NO BOLTS)	NO-SEEP® NO.10	24	13 X 12 X 12	1.08	16	0 39961 73206 4	100 39961 00010 8
PRO800	 EXTRA THICK WAX W/O FLANGE (NO BOLTS)	BOL-WAX® NO.10	24	13 X 12 X 12	1.08	16	0 39961 04307 8	100 39961 04335 8
PRO70U-R (REINFORCED)	 URINAL WAX (NO BOLTS)	BOL-WAX® NO.6	24	9 X 9 X 6	0.28	6	0 39961 04304 7	100 39961 04331 0
PRO70B-R (REINFORCED)	 BACK OUTLET WAX (NO BOLTS)	NO-SEEP® NO.2	48	13 X 19 X 11	1.57	20	0 39961 04305 4	100 39961 04332 7
PRO4KF	 4" BOWL WAX KIT W/FLANGE	N/A	24	13 X 12 X 12	1.08	14	0 39961 04332 0	100 39961 14108 5

PRO TOILET BOWL WAX & WAX-FREE GASKETS



FluidmasterPRO.com

# The Toilet Repair Experts

## PRO CLICK SEAL® WATER SUPPLY CONNECTORS - TOILET AND FAUCET

This innovative two-piece nut uses the same theory as the gas cap on a car, the nut clicks when it's sealed.

All you need is a Click Seal® water supply connector, a hand to tighten it, and a click to let you know it's sealed.

### 10 year warranty

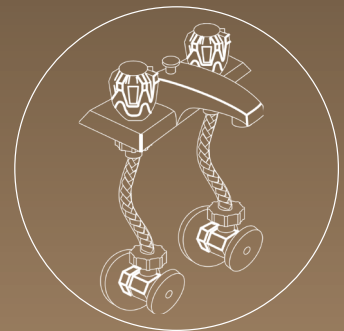
The "Click" Lets You Know It's Sealed!® Patented Click Seal® Technology

Click Seal nut eliminates possibility of overtightening

Lead free compliant with NSF 61 and all other lead free laws



toilet



faucet

**NUT "CLICKS"** when proper torque reached (like gas cap)

**FLEXIBLE STAINLESS STEEL BRAID**

**CLICK SEAL NUTS** on BOTH ends for perfect seal every time (faucet only)

**REINFORCED BRAIDED INNER CORE**

**BRASS THREAD and INSERT** no crossthreading for secure connection

**DOUBLE RADIAL CRIMP** for strong nut-to-hose connection

**NUT WON'T CRACK** due to overtightening

**RADIAL CRIMP** for strong nut-to-hose connection

**FAUCET**

**TOILET**



# PRO CLICK SEAL® WATER SUPPLY CONNECTORS



## TOILET CONNECTORS

MODEL NUMBER	CONNECTOR CONFIGURATION	LENGTH (INCHES)	CASE QTY	CASE DIMENSIONS W/D/H (INCHES)	CUBIC FEET	CASE WEIGHT (LBS)	UPC	SCCI 2 OF 5
PRO1T09CS	3/8" COMP. X 7/8" BALLCOCK	9	25	8 X 17 X 5	0.39	5	0 39961 00650 9	100 39961 00650 6
PRO1T12CS	3/8" COMP. X 7/8" BALLCOCK	12	25	8 X 17 X 5	0.39	6	0 39961 00651 6	100 39961 00651 3
PRO1T16CS	3/8" COMP. X 7/8" BALLCOCK	16	25	9 X 22 X 5	0.57	6	0 39961 00652 3	100 39961 00652 0
PRO1T20CS	3/8" COMP. X 7/8" BALLCOCK	20	25	9 X 22 X 5	0.57	7	0 39961 00653 0	100 39961 00653 7

## FAUCET CONNECTORS



MODEL NUMBER	CONNECTOR CONFIGURATION	LENGTH (INCHES)	CASE QTY	CASE DIMENSIONS W/D/H (INCHES)	CUBIC FEET	CASE WEIGHT (LBS)	UPC	SCCI 2 OF 5
PRO1F12CS	3/8" COMP. X 1/2" F.I.P.	12	25	8 X 17 X 5	0.39	8	0 39961 00654 7	100 39961 00654 4
PRO1F16CS	3/8" COMP. X 1/2" F.I.P.	16	25	9 X 22 X 5	0.57	8	0 39961 00655 4	100 39961 00655 1
PRO1F20CS	3/8" COMP. X 1/2" F.I.P.	20	25	9 X 22 X 5	0.57	9	0 39961 00656 1	100 39961 00656 8
PRO1F30CS	3/8" COMP. X 1/2" F.I.P.	30	25	8 X 22 X 6	0.61	11	0 39961 00657 8	100 39961 00657 5

PRO CLICK SEAL® CONNECTORS

FluidmasterPRO.com



# The Toilet Repair Experts

## WATER SUPPLY CONNECTORS - FAUCET

No other connector on the market comes close to the toughness of a Fluidmaster® PRO Series Connector. Made of a tough polymer core encased in braided stainless steel wire, these connectors go above and beyond what's required by code. Backed by a 10-year warranty, these connectors are only found where other PRO Series products are sold.

### 10 year warranty

Stainless steel braiding provides maximum protection against bursting.

Braided stainless steel lengths range from 9" to 48"

Ample inside diameter for high flow capacity

Won't kink or crease, even in the tightest of spaces

Lead free compliant with NSF 61 and all other lead free laws



# PRO FAUCET WATER SUPPLY CONNECTORS

PRO WATER SUPPLY CONNECTORS

MODEL NUMBER	CONNECTOR CONFIGURATION	LENGTH (INCHES)	CASE QTY	CASE DIMENSIONS W/D/H (INCHES)	CUBIC FEET	CASE WEIGHT (LBS)	UPC	SCCI 2 OF 5
PR01F09	3/8" COMP. X 1/2" F.I.P.	9	25	7 X 10 X 5	0.20	5	0 39961 00718 6	100 39961 00718 3
PR01F12	3/8" COMP. X 1/2" F.I.P.	12	25	7 X 14 X 5	0.28	6	0 39961 10012 2	100 39961 10012 9
PR01F16	3/8" COMP. X 1/2" F.I.P.	16	25	8 X 17 X 5	0.39	7	0 39961 10016 0	100 39961 10016 7
PR01F20	3/8" COMP. X 1/2" F.I.P.	20	25	8 X 17 X 5	0.39	8	0 39961 10020 7	100 39961 10020 4
PR01F24	3/8" COMP. X 1/2" F.I.P.	24	10	7 X 14 X 5	0.28	3	0 39961 00719 3	100 39961 00719 0
PR01F30	3/8" COMP. X 1/2" F.I.P.	30	25	8 X 17 X 5	0.39	10	0 39961 10030 6	100 39961 10030 3
PR01F36	3/8" COMP. X 1/2" F.I.P.	36	10	8 X 17 X 5	0.39	6	0 39961 00720 9	100 39961 00720 6
PR01F48	3/8" COMP. X 1/2" F.I.P.	48	10	8 X 17 X 5	0.39	10	0 39961 00721 6	100 39961 00721 3
PR04F12	1/2" F.I.P. X 1/2" F.I.P.	12	25	7 X 14 X 5	0.28	5	0 39961 10015 3	100 39961 10015 0
PR04F16	1/2" F.I.P. X 1/2" F.I.P.	16	25	8 X 17 X 5	0.39	6	0 39961 10017 7	100 39961 10017 4
PR04F20	1/2" F.I.P. X 1/2" F.I.P.	20	25	8 X 17 X 5	0.39	8	0 39961 10018 4	100 39961 10018 1
PR04F30	1/2" F.I.P. X 1/2" F.I.P.	30	25	8 X 17 X 5	0.39	9	0 39961 10019 1	100 39961 10019 8
PR06F12	3/8" COMP. X 3/8" COMP.	12	25	7 X 14 X 5	0.28	6	0 39961 10024 5	100 39961 10024 2
PR06F16	3/8" COMP. X 3/8" COMP.	16	25	8 X 17 X 5	0.39	6	0 39961 00726 1	100 39961 00726 8
PR06F20	3/8" COMP. X 3/8" COMP.	20	25	8 X 17 X 5	0.39	7	0 39961 10025 2	100 39961 10025 9
PR08F12	3/8" COMP. X 3/8" O.D. COPPER TUBING COUPLING	12	25	7 X 14 X 5	0.28	6	0 39961 10026 9	100 39961 10026 6
PR08F16	3/8" COMP. X 3/8" O.D. COPPER TUBING COUPLING	16	25	8 X 17 X 5	0.39	6	0 39961 00727 8	100 39961 00727 5
PR08F20	3/8" COMP. X 3/8" O.D. COPPER TUBING COUPLING	20	25	8 X 17 X 5	0.39	8	0 39961 10027 6	100 39961 10027 3

Fluidmaster's 8F tapered sleeve compression connectors are for direct connection from faucet to angle stop only. Do not use as extension. Male threads are for connection to copper tubing only. Fluidmaster will not be responsible or liable for improper use of these products.

FluidmasterPRO.com



# The Toilet Repair Experts

## WATER SUPPLY CONNECTORS - TOILET

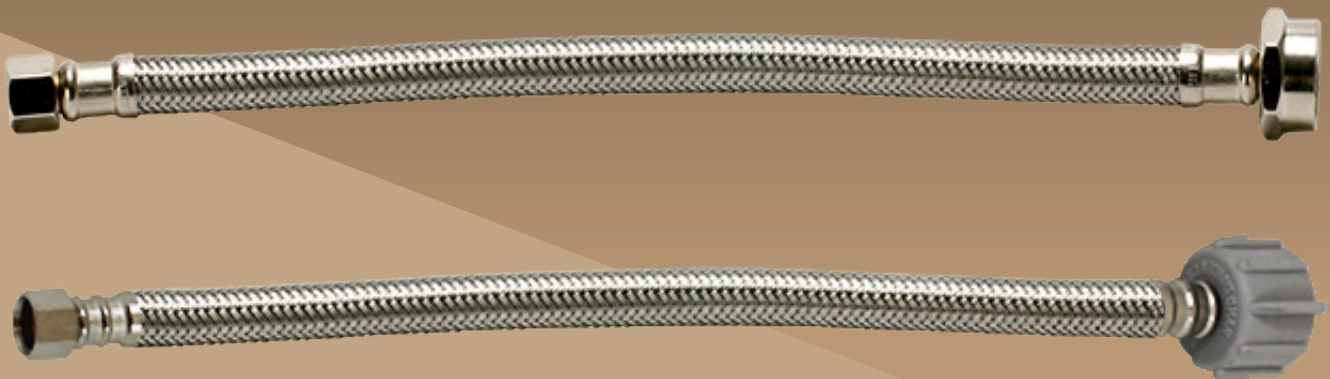
No other connector on the market comes close to the toughness of a Fluidmaster® PRO Series Connector. Made of a tough polymer core encased in braided stainless steel wire, these connectors go above and beyond what's required by code. Backed by a 10-year warranty, these connectors are only found where other PRO Series products are sold.

### 10 year warranty

Stainless steel braiding provides maximum protection against bursting.

Braided stainless steel lengths range from 6" to 20"

Won't kink or crease, even in the tightest of spaces



*Braided stainless steel  
lengths range from 6" to 20"*

*Available with plastic or metal ballcock nuts*



# PRO TOILET WATER SUPPLY CONNECTORS

## METAL NUT TOILET CONNECTORS

Ideal to pair with PRO45B

MODEL NUMBER	CONNECTOR CONFIGURATION	LENGTH (INCHES)	CASE QTY	CASE DIMENSIONS W/D/H (INCHES)	CUBIC FEET	CASE WEIGHT (LBS)	UPC	SCCI 2 OF 5
PRO1T09M	3/8" COMP. X 7/8" BALLCOCK	9	25	7 X 10 X 5	0.16	6	0 39961 41185 3	100 39961 42182 8
PRO1T12M	3/8" COMP. X 7/8" BALLCOCK	12	25	7 X 14 X 5	0.23	7	0 39961 41186 0	100 39961 42183 5
PRO1T16M	3/8" COMP. X 7/8" BALLCOCK	16	25	8 X 17 X 5	0.39	7	0 39961 41187 7	100 39961 42185 9
PRO1T20M	3/8" COMP. X 7/8" BALLCOCK	20	25	8 X 17 X 5	0.39	7	0 39961 41188 4	100 39961 42186 8

## PLASTIC NUT TOILET CONNECTORS

MODEL NUMBER	CONNECTOR CONFIGURATION	LENGTH (INCHES)	CASE QTY	CASE DIMENSIONS W/D/H (INCHES)	CUBIC FEET	CASE WEIGHT (LBS)	UPC	SCCI 2 OF 5
PRO1T06	3/8" COMP. X 7/8" BALLCOCK	6	25	7 X 10 X 5	0.20	4	0 39961 00822 0	100 39961 00822 7
PRO1T09	3/8" COMP. X 7/8" BALLCOCK	9	25	7 X 10 X 5	0.20	5	0 39961 10011 5	100 39961 10011 2
PRO1T12	3/8" COMP. X 7/8" BALLCOCK	12	25	7 X 14 X 5	0.28	6	0 39961 10013 9	100 39961 10013 6
PRO1T16	3/8" COMP. X 7/8" BALLCOCK	16	25	8 X 17 X 5	0.39	7	0 39961 10028 3	100 39961 15004 9
PRO1T20	3/8" COMP. X 7/8" BALLCOCK	20	25	8 X 17 X 5	0.39	6	0 39961 10014 6	100 39961 10014 3
PRO4T09	1/2" F.I.P. X 7/8" BALLCOCK	9	25	7 X 10 X 5	0.20	5	0 39961 10021 4	100 39961 10021 1
PRO4T12	1/2" F.I.P. X 7/8" BALLCOCK	12	25	7 X 14 X 5	0.28	6	0 39961 10022 1	100 39961 10022 8
PRO4T16	1/2" F.I.P. X 7/8" BALLCOCK	16	25	8 X 17 X 5	0.39	7	0 39961 00732 2	100 39961 00732 9
PRO4T20	1/2" F.I.P. X 7/8" BALLCOCK	20	25	8 X 17 X 5	0.39	6	0 39961 10023 8	100 39961 10023 5

### WATER SUPPLY CONNECTORS - WATER HEATER

No other connector on the market comes close to the toughness of a Fluidmaster® PRO Series Connector. Made of a tough polymer core encased in braided stainless steel wire, these connectors go above and beyond what's required by code. Backed by a 10-year warranty, these connectors are only found where other PRO Series products are sold.

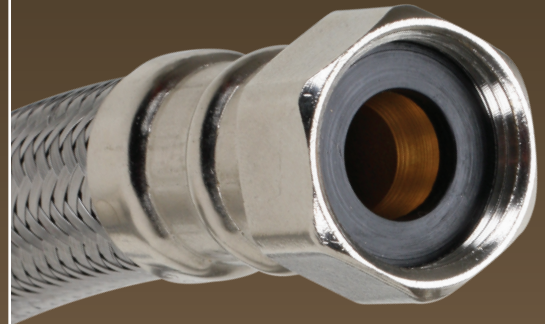
#### 10 year warranty

Stainless steel braiding provides maximum protection against bursting.

Braided stainless steel lengths range from 12" to 24"

Ample inside diameter for high flow capacity

Won't kink or crease, even in the tightest of spaces



### WATER HEATER CONNECTORS

MODEL NUMBER	CONNECTOR CONFIGURATION	LENGTH (INCHES)	CASE QTY	CASE DIMENSIONS W/D/H (INCHES)	CUBIC FEET	CASE WEIGHT (LBS)	UPC	SCCI 2 OF 5
PR01H12	3/4" F.I.P. X 3/4" F.I.P.	12	10	7 X 14 X 5	0.28	6	0 39961 00733 9	100 39961 00733 6
PR01H18	3/4" F.I.P. X 3/4" F.I.P.	18	10	8 X 17 X 5	0.39	7	0 39961 00734 6	100 39961 00734 3
PR01H24	3/4" F.I.P. X 3/4" F.I.P.	24	10	9 X 22 X 5	0.58	9	0 39961 00737 7	100 39961 00737 4
PR03H18	3/4" M.I.P. X 3/4" F.I.P.	18	10	8 X 17 X 5	0.39	7	0 39961 00736 0	100 39961 00736 7
PR04H18	3/4" F.I.P. X 3/4" COMP	18	10	8 X 17 X 5	0.39	8	0 39961 00739 1	100 39961 00739 8

# PRO SERIES TANK LEVERS

## TANK LEVERS

Use a PRO tank lever to make sure your customer doesn't have to worry. The arm can be bent or trimmed to fit just about any tank. Its chrome finish will look good in any bathroom.

Chrome finish handle

Fits most front, side or angle-mount tanks

### PRO61 Tank Lever

**1 year warranty**

- Universal fit

### PRO64 Deluxe Tank Lever

**3 year warranty**

- Solid brass arm
- Universal fit

## TANK LEVERS

MODEL NUMBER	PRODUCT NAME	CASE QTY	CASE DIMENSIONS W/D/H (INCHES)	CUBIC FEET	CASE WEIGHT (LBS)	UPC	SCCI 2 OF 5
PRO61	CHROME TANK LEVER	10	7 X 13 X 4	0.25	2	0 39961 61200 7	100 39961 61002 4
PRO64	DELUXE CHROME TANK LEVER	10	7 X 13 X 4	0.25	2	0 39961 64200 4	100 39961 64002 1

# EXCLUSIVELY FOR PROS

Fluidmaster® PRO Series Tank Levers, like all PRO Series products are built to last. Made from durable materials, they'll adjust to fit any tank.

FluidmasterPRO.com



PRO TANK LEVERS



Installed in more toilets than all other brands combined.



Visit [FluidmasterPRO.com](http://FluidmasterPRO.com)

30800 Rancho Viejo Rd.  
San Juan Capistrano, CA 92675  
Phone: 949-728-2000  
Toll Free: 1-800-631-2011  
Grev. 8 09/16 FM91436

For warranty details, please visit [www.FluidmasterPRO.com](http://www.FluidmasterPRO.com)