

Oatey®

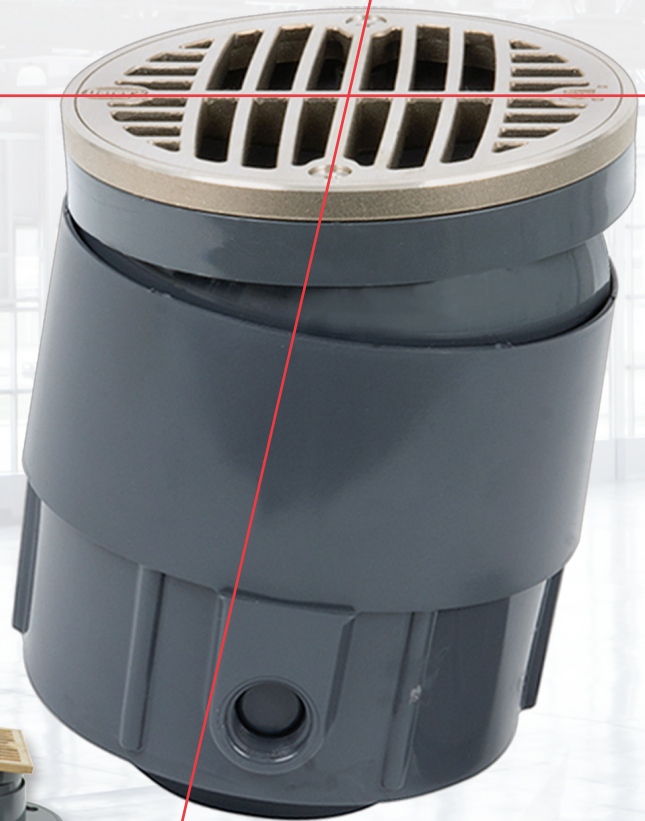


TRUE SET™

COMMERCIAL DRAINAGE SYSTEMS

***Complete Drain,
Complete Line,
Complete Solutions.***

***Easy leveling drain for
a "True Set" every time!***



The Complete Story

At Oatey Company, we know that in order for you to do your job easily, efficiently and completely, we need to do ours. Oatey Company products offer more flexibility and innovation than ever before, complete versatility, complete assembly and complete confidence.



The Complete Benefits of True Set

The most complete line of non-metallic drains and cleanouts in the industry are packed full of features for maximum convenience and efficiency.

1. Complete Versatility

✓ Ready for use right out of the box

Comes completely assembled – no spare parts.

✓ Provides a level installation to the finished floor every time

Post-pour height and tilt adjustment with the optional leveling kit provides industry-leading height adjustment and 360 degrees of up to 5 degrees of pitch adjustment.

✓ Concrete tight protection

Concrete tight unit comes fully assembled – No taping.



✓ Interchangeable Drain and Cleanout

Interchangeable covers provide post installation flexibility allowing conversions from one to the other.

✓ Available in PVC or ABS, flanged or on-grade style bases

✓ Accommodates 2", 3" and 4" pipe

✓ Multiple sizes and finishes available

5" and 6" covers cleanout or drain – available in Stainless, Brass, Nickel, or Chrome; Round or Square.

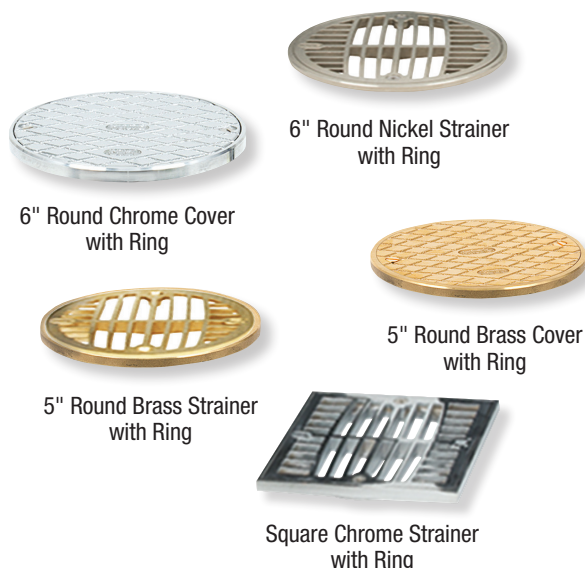
TP5KIT	5" PVC Leveling Kit
TA5KIT	5" ABS Leveling Kit
TP6KIT	6" PVC Leveling Kit
TA6KIT	6" ABS Leveling Kit



Leveling Kit



Oatey Heavy Duty Clear #31008 recommended for use with leveling kit. sold separately.



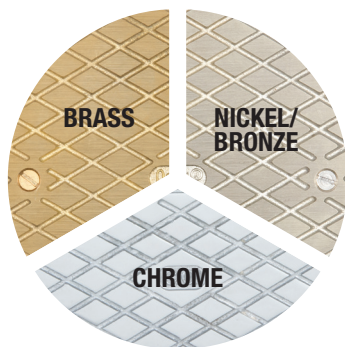
6" Round Nickel Strainer with Ring

6" Round Chrome Cover with Ring

5" Round Brass Cover with Ring

5" Round Brass Strainer with Ring

Square Chrome Strainer with Ring



Finishes Available



Top View of Strainers

✓ Test with the DWV system

Pressure rated quarter-turn plug (factory installed on all cleanouts) is pressure rated up to 13 psi or 30 feet of head.



2. Complete Confidence/ Post Pour Leveling

✓ Largest adjustment range in the industry

Simple adjustments (up or down) ensure a true set to any finished floor.

✓ Height and pitch adjustments

Provides 360 degree leveling with up to a 5 degree pitch (kit sold separately).

3. Complete Assembly

✓ No spare parts to lose

Ready to install straight out of the carton.

4. Complete Safety/ Load Capacity

✓ C-UPC listed and medium duty rated by IAPMO

Patent pending design provides the smallest diameter strainers to meet the water flow requirements of UPC, ASME A112.6.3, and CSA B79 standards, while exceeding the medium duty (2,000 lb. load) rating.

There you have it, everything you need to know about the True Set family of commercial drains – products that let you ditch the worry and turn every project into just what you want – a complete success.

A Solution for Every Drain Application

Oatey has a wide variety of roof drains, floor drains, square top and 6" diameter drains. Our products give you the confidence to do the job right the first time, every time.

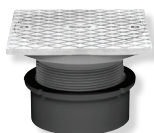
Visit www.oatey.com or call 1-800-321-9532



6" Drains and
Large Diameter
Strainers & Covers



Sediment
Drains



Hub Fitting
Drains



Floor Sinks



Roof
Drains



Drain
Accessories



Roof Drain
Accessories

Only from Oatey – the choice of plumbing professionals.

			Die Cast Brass Strainer		Die Cast Nickel Strainer		Die Cast Chrome Plated Strainer	
			Round w/ Ring	Square w/ Ring	Round w/ Ring	Square w/ Ring	Round w/ Ring	Square w/ Ring
5" Strainer	PVC On-Grade Base	2" Outside/ 3" Inside Pipe Fit	TP232B	TP235B	TP232N	TP235N	TP232C	TP235C
		3" Outside/ 4" Inside Pipe Fit	TP332B	TP335B	TP332N	TP335N	TP332C	TP335C
		4" Outside Pipe Fit	TP432B*	TP435B*	TP432N*	TP435N*	TP432C*	TP435C*
	ABS On-Grade Base	2" Outside/ 3" Inside Pipe Fit	TA232B	TA235B	TA232N	TA235N	TA232C	TA235C
		3" Outside/ 4" Inside Pipe Fit	TA332B	TA335B	TA332N	TA335N	TA332C	TA335C
		4" Outside Pipe Fit	TA432B*	TA435B*	TA432N*	TA435N*	TA432C*	TA435C*
	PVC Flange Base	2" Outside/ 3" Inside Pipe Fit	TP212B	TP215B	TP212N	TP215N	TP212C	TP215C
		3" Outside/ 4" Inside Pipe Fit	TP312B	TP315B	TP312N	TP315N	TP312C	TP315C
		4" Outside Pipe Fit	TP412B*	TP415B*	TP412N*	TP415N*	TP412C*	TP415C*
	ABS Flange Base	2" Outside/ 3" Inside Pipe Fit	TA212B	TA215B	TA212N	TA215N	TA212C	TA215C
		3" Outside/ 4" Inside Pipe Fit	TA312B	TA315B	TA312N	TA315N	TA312C	TA315C
		4" Outside Pipe Fit	TA412B*	TA415B*	TA412N*	TA415N*	TA412C*	TA415C*
6" Strainer	PVC On-Grade Base	2" Outside/ 3" Inside Pipe Fit	TP234B	TP236B	TP234N	TP236N	TP234C	TP236C
		3" Outside/ 4" Inside Pipe Fit	TP334B	TP336B	TP334N	TP336N	TP334C	TP336C
		4" Outside Pipe Fit	TP434B	TP436B	TP434N	TP436N	TP434C	TP436C
	ABS On-Grade Base	2" Outside/ 3" Inside Pipe Fit	TA234B	TA236B	TA234N	TA236N	TA234C	TA236C
		3" Outside/ 4" Inside Pipe Fit	TA334B	TA336B	TA334N	TA336N	TA334C	TA336C
		4" Outside Pipe Fit	TA434B	TA436B	TA434N	TA436N	TA434C	TA436C
	PVC Flange Base	2" Outside/ 3" Inside Pipe Fit	TP214B	TP216B	TP214N	TP216N	TP214C	TP216C
		3" Outside/ 4" Inside Pipe Fit	TP314B	TP316B	TP314N	TP316N	TP314C	TP316C
		4" Outside Pipe Fit	TP414B	TP416B	TP414N	TP416N	TP414C	TP416C
	ABS Flange Base	2" Outside/ 3" Inside Pipe Fit	TA214B	TA216B	TA214N	TA216N	TA214C	TA216C
		3" Outside/ 4" Inside Pipe Fit	TA314B	TA316B	TA314N	TA316N	TA314C	TA316C
		4" Outside Pipe Fit	TA414B	TA416B	TA414N	TA416N	TA414C	TA416C

* (*) indicates drain only conforms to CSA B79.

* All non-stainless steel strainers are medium duty rated for 2000 lbs. minimum.

* All drain part numbers not marked with (*) or (+) meet ASME A112.6.3 and CSA B79 commercial drain standards.



Part Number Legend (Example: TP211S)

T	P	2	1	1	S
T- True-Set	P- PVC	2- 2" Outside/ 3" Inside Solvent	1- Flanged Drain	N/A	S- Stainless Steel
	A- ABS	3- 3" Outside/ 4" Inside Solvent	2- Flanged CO	2- 5" Round w/ Ring	B- Brass
		4- 4" Outside Solvent	3- On-grade Drain	N/A	N- Nickel Bronze
			4- On-grade CO	4- 6" Round w/ Ring	C- Chrome
				5- 5" Square w/ Ring	
				6- 6" Square w/ Ring	

			Cast Brass CO Cover	Cast Nickel CO Cover	Cast Chrome Plated CO Cover
			Round w/ Ring	Round w/ Ring	Round w/ Ring
5" Cleanout <i>Cleanout Plug Included</i>	PVC On-Grade Base	2" Outside/3" Inside Pipe Fit	TP242B	TP242N	TP242C
		3" Outside/4" Inside Pipe Fit	TP342B	TP342N	TP342C
		4" Outside Pipe Fit	TP442B	TP442N	TP442C
	ABS On-Grade Base	2" Outside/3" Inside Pipe Fit	TA242B	TA242N	TA242C
		3" Outside/4" Inside Pipe Fit	TA342B	TA342N	TA342C
		4" Outside Pipe Fit	TA442B	TA442N	TA442C
	PVC Flange Base	2" Outside/3" Inside Pipe Fit	TP222B	TP222N	TP222C
		3" Outside/4" Inside Pipe Fit	TP322B	TP322N	TP322C
		4" Outside Pipe Fit	TP422B	TP422N	TP422C
	ABS Flange Base	2" Outside/3" Inside Pipe Fit	TA222B	TA222N	TA222C
		3" Outside/4" Inside Pipe Fit	TA322B	TA322N	TA322C
		4" Outside Pipe Fit	TA422B	TA422N	TA422C
6" Cleanout <i>Cleanout Plug Included</i>	PVC On-Grade Base	2" Outside/3" Inside Pipe Fit	TP244B	TP244N	TP244C
		3" Outside/4" Inside Pipe Fit	TP344B	TP344N	TP344C
		4" Outside Pipe Fit	TP444B	TP444N	TP444C
	ABS On-Grade Base	2" Outside/3" Inside Pipe Fit	TA244B	TA244N	TA244C
		3" Outside/4" Inside Pipe Fit	TA344B	TA344N	TA344C
		4" Outside Pipe Fit	TA444B	TA444N	TA444C
	PVC Flange Base	2" Outside/3" Inside Pipe Fit	TP224B	TP224N	TP224C
		3" Outside/4" Inside Pipe Fit	TP324B	TP324N	TP324C
		4" Outside Pipe Fit	TP424B	TP424N	TP424C
	ABS Flange Base	2" Outside/3" Inside Pipe Fit	TA224B	TA224N	TA224C
		3" Outside/4" Inside Pipe Fit	TA324B	TA324N	TA324C
		4" Outside Pipe Fit	TA424B	TA424N	TA424C

All Cleanouts meet both ASME A112.36.2M & CSA B79 standards.
Note: Strainers and Covers are medium duty load rated.

Accessories

Part No.	Description
TP5KIT	5" PVC LEVELING KIT
TP6KIT	6" PVC LEVELING KIT
TA5KIT	5" ABS LEVELING KIT
TA6KIT	6" ABS LEVELING KIT
TP006	TAMPER PROOF BRASS MACHINE SCREWS W/ DRIVER
TP007	TAMPER PROOF STAINLESS STEEL MACHINE SCREWS W/ DRIVER – FOR USE WITH NICKEL AND CHROME FINISHES
TP009	TRUE-SET SEDIMENT STRAINER
TP012	2" SEALING PLUG
TP013	3" SEALING PLUG
TP014	4" SEALING PLUG
71720	CAST IRON ROUND DRAIN FUNNEL
71730	CAST IRON OVAL DRAIN FUNNEL
TP010	5" PVC LONG BARREL – PROVIDES 2-3/4" HEIGHT ADJUSTMENT
TP011	6" PVC LONG BARREL – PROVIDES 2-3/4" HEIGHT ADJUSTMENT
TA010	5" ABS LONG BARREL – PROVIDES 2-3/4" HEIGHT ADJUSTMENT
TA011	6" ABS LONG BARREL – PROVIDES 2-3/4" HEIGHT ADJUSTMENT



Drain and Cleanout Components

Part No.	Description
TP23	2-3" SW PVC TRUE-SET ON-GRD BASE W/O STRAINER OR COVER
TP33	3-4" SW PVC TRUE-SET ON-GRD BASE W/O STRAINER OR COVER
TP43	4" SW PVC TRUE-SET ON-GRD BASE W/O STRAINER OR COVER
TA23	2-3" SW ABS TRUE-SET ON-GRD BASE W/O STRAINER OR COVER
TA33	3-4" SW ABS TRUE-SET ON-GRD BASE W/O STRAINER OR COVER
TA43	4" SW ABS TRUE-SET ON-GRD BASE W/O STRAINER OR COVER
TP21	2-3" SW PVC TRUE-SET FLNG BASE W/O STRAINER OR COVER
TP31	3-4" SW PVC TRUE-SET FLNG BASE W/O STRAINER OR COVER
TP41	4" SW PVC TRUE-SET FLNG BASE W/O STRAINER OR COVER
TA21	2-3" SW ABS TRUE-SET FLNG BASE W/O STRAINER OR COVER
TA31	3-4" SW ABS TRUE-SET FLNG BASE W/O STRAINER OR COVER
TA41	4" SW ABS TRUE-SET FLNG BASE W/O STRAINER OR COVER
TSR5BR	STRAINER-5" ROUND BRASS & RING
TSR5NR	STRAINER-5" ROUND NICKEL BRONZE & RING
TSR5CR	STRAINER-5" ROUND CHROME & RING
TSR5BR	STRAINER-5" SQUARE BRASS & RING
TSR5NR	STRAINER-5" SQUARE NICKEL BRONZE & RING
TSR5CR	STRAINER-5" SQUARE CHROME & RING
TSR6BR	STRAINER-6" ROUND BRASS & RING
TSR6NR	STRAINER-6" ROUND NICKEL BRONZE & RING
TSR6CR	STRAINER-6" ROUND CHROME & RING
TSS6BR	STRAINER-6" SQUARE BRASS & RING
TSS6NR	STRAINER-6" SQUARE NICKEL BRONZE & RING
TSS6CR	STRAINER-6" SQUARE CHROME & RING
TCR5BR	CLEANOUT COVER-5" ROUND BRASS & RING
TCR5NR	CLEANOUT COVER-5" ROUND NICKEL BRONZE & RING
TCR5CR	CLEANOUT COVER-5" ROUND CHROME & RING
TCR6BR	CLEANOUT COVER-6" ROUND BRASS & RING
TCR6NR	CLEANOUT COVER-6" ROUND NICKEL BRONZE & RING
TCR6CR	CLEANOUT COVER-6" ROUND CHROME & RING