



FAITH EAST SERVICE SCHEDULE

In addition to the services that we will continue to stream online (faithlafayette.org/streaming), we will offer seven different onsite services at Faith East.

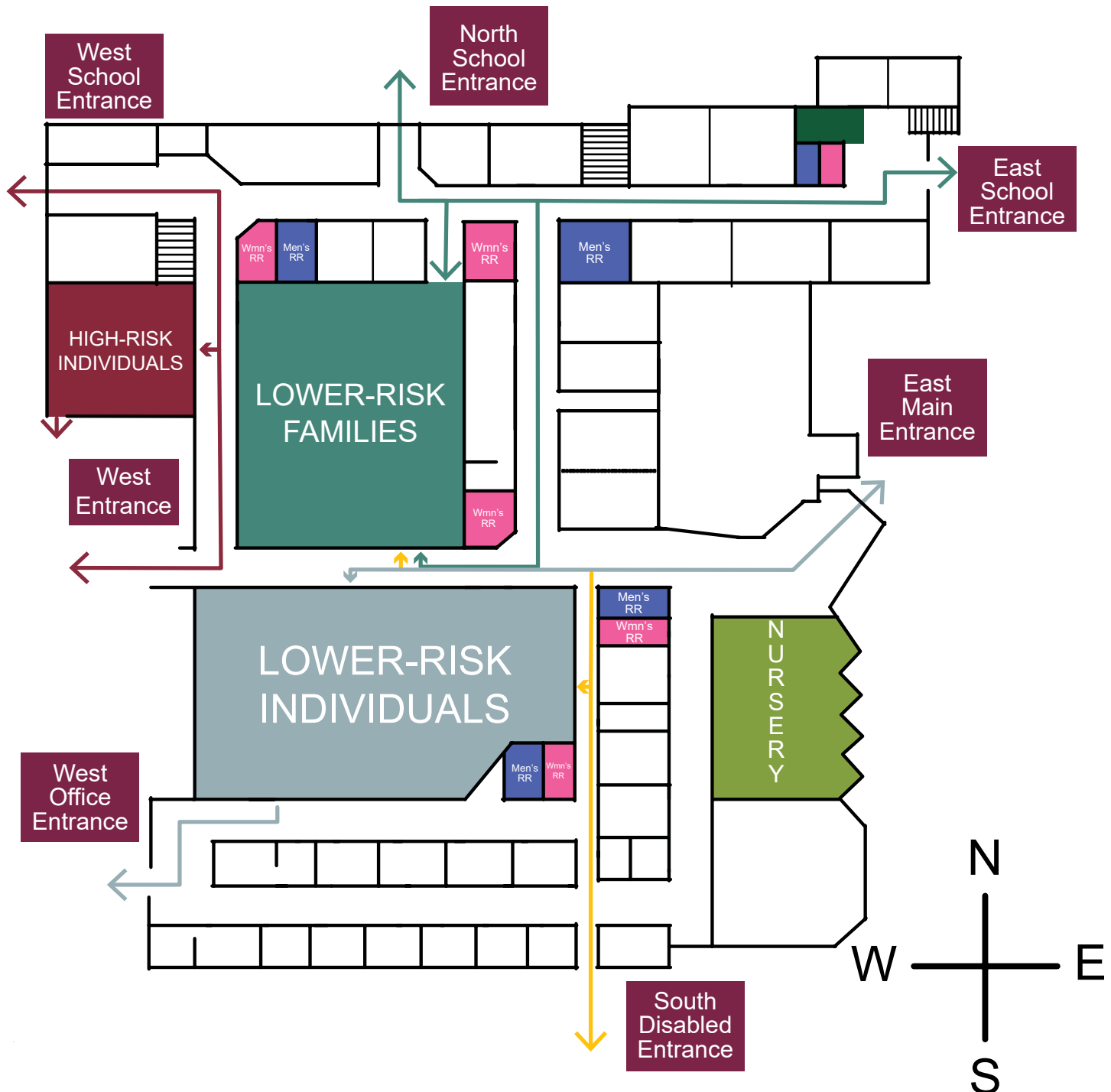
- Seating will be disinfected and arranged in socially-distanced clusters.
- Members of the same household may sit together.
- The church nursery will provide care for children 23 months and under during all services. Please register at the link below.
- Wheelchair accessible entrances are the west school, west, south handicap, and main east entrances.

Please find below the guidelines for what service you should attend and register at faithlafayette.org/servicetickets.

LOW-RISK INDIVIDUALS	LOW-RISK FAMILIES	HIGH-RISK INDIVIDUALS
<p>Who: Lower-risk adults and teens</p> <p>When: 8:00, 9:30, & 11:00AM</p> <p>Where: Church Auditorium</p> <p>How to enter: Use the main east entrance to the foyer. Enter the auditorium through the foyer lobby. Please leave the building the same way or you may use the west office entrance.</p> <p>Additional Info: The 8:00 service will be live-streamed and then available on demand.</p>	<p>Who: Families with young children</p> <p>When: 8:15, 9:45, & 11:15AM</p> <p>Where: Church Gym</p> <p>How to Enter: Use either the north school or east school entrance. Enter the gym through the north or south (foyer) doors. Please leave the building the same way.</p>	<p>Who: Those taking extra precautions</p> <p>When: 8:30</p> <p>Where: Band Room</p> <p>How to enter: Use either the west or west school entrance. Enter the school band room. Please leave the building the same way.</p> <p>Additional Info: All participants will be required to bring and wear a mask.</p>



FAITH EAST SERVICE MAP



Low-Risk Directions

Low-Risk Fam Directions

High-Risk Directions

Persons w/ Disabilities