

U.S. \$25.00 CAN. \$33.00 ● RED **S**

V8959 VERY EASY/TRÈS FACILE

MISSES' CAPE: Loose-fitting, lined cape has collar, side front and back seams, side front openings, front button closing, and narrow hem.

Combinations: **Y**(XS-S-M), **ZZ**(L-XL-XXL)

SIZES	XS	S	M	L	XL	XXL
	4-6	8-10	12-14	16-18	20-22	24-26
A 45"	2	2½	2¼	2⅝	2¾	2¾
60"	1¾	1¾	1⅞	1⅞	1⅞	2
LINING A						
45"	1⅝	1¾	1⅞	2	2⅞	2¼
FUSIBLE INTERFACING A - 18", 20" - ¾ yd.						
B 45"	3⅝	3¾	4⅞	4⅞	4¼	4¼
60"	2½	2½	2⅝	2¾	2⅞	3
LINING B						
45"	3¼	3⅝	3½	3⅝	3¾	3⅞
FUSIBLE INTERFACING B - 18", 20" - 1⅞ yds.						
C 45"	6⅝	6½	6⅝	6⅞	7	7¼
60"	4¾	5	5⅝	5⅞	6	6⅞
LINING C						
45"	5¼	5⅝	5⅝	5½	5½	5⅝
FUSIBLE INTERFACING C - 18", 20" - 1⅝ yds.						

FABRICS: Wool Blends, Tweeds, Brocade, Taffeta. Unsuitable for obvious diagonals. *With Nap.

NOTIONS: 1" Buttons: Three for **A**, One for **B**, **C**.

FINISHED GARMENT MEASUREMENTS

Width, lower edge

A	85	87	90½	94½	98½	102½
---	----	----	-----	-----	-----	------

Back length from the base of neck

A	24½	25	25½	26	26½	27
B	35½	36	36½	37	37½	38
C	54½	55	55½	56	56½	57

CAPE (J. femme): Cape doublée, ample, avec col, coutures au côté devant et dos, ouvertures au côté devant, fermeture à bouton au devant et ourlet étroit.

Séries: **Y**(TP-P-M), **ZZ**(G-TG-TTG)

TAILLES	TP	P	M	G	TG	TTG
	4-6	8-10	12-14	16-18	20-22	24-26
A 115cm*	1.9	2.0	2.1	2.4	2.6	2.6
150cm*	1.6	1.6	1.8	1.8	1.8	1.9
DOUBLURE A						
115cm	1.5	1.6	1.8	1.9	2.0	2.1
ENTOILAGE THERMOCOLLANT A - 46, 51cm - 0.7m						
B 115cm*	3.4	3.5	3.8	3.8	3.9	3.9
150cm*	2.3	2.3	2.4	2.6	2.7	2.8
DOUBLURE B						
115cm	3.0	3.1	3.2	3.4	3.5	3.6
ENTOILAGE THERMOCOLLANT B - 46, 51cm - 1.1m						
C 115cm*	5.9	6.0	6.1	6.3	6.4	6.7
150cm*	4.4	4.6	5.0	5.4	5.5	5.6
DOUBLURE C						
115cm	4.8	5.0	5.0	5.1	5.1	5.2
ENTOILAGE THERMOCOLLANT C - 46, 51cm - 1.5m						

TISSUS: Lainage, Tweed, Brocart, Taffetas. Grandes diagonales ne conviennent pas. *Avec Sens.

MERCERIE: Boutons de 25mm: 3 pour **A**, 1 pour **B**, **C**.

MESURES DU VÊTEMENT FINI

Largeur à l'ourlet

A	216	221	230	240	250	260
---	-----	-----	-----	-----	-----	-----

Longueur - dos, votre nuque à l'ourlet

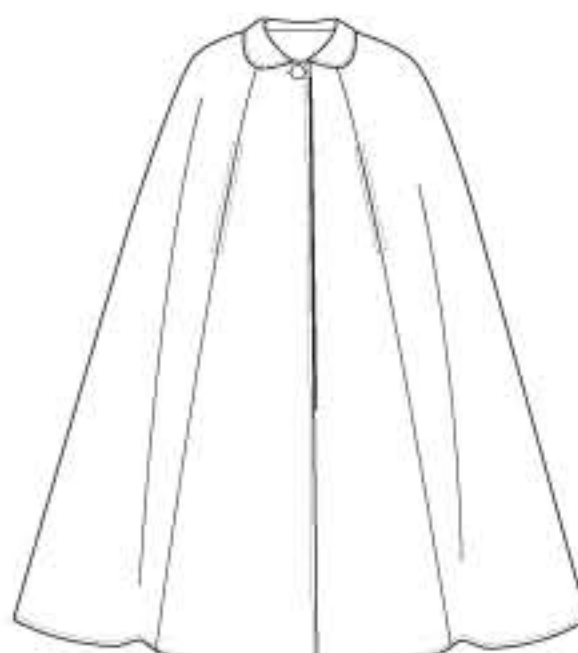
A	62	64	65	66	67	69
B	90	92	93	94	95	97
C	138	140	141	142	143	145



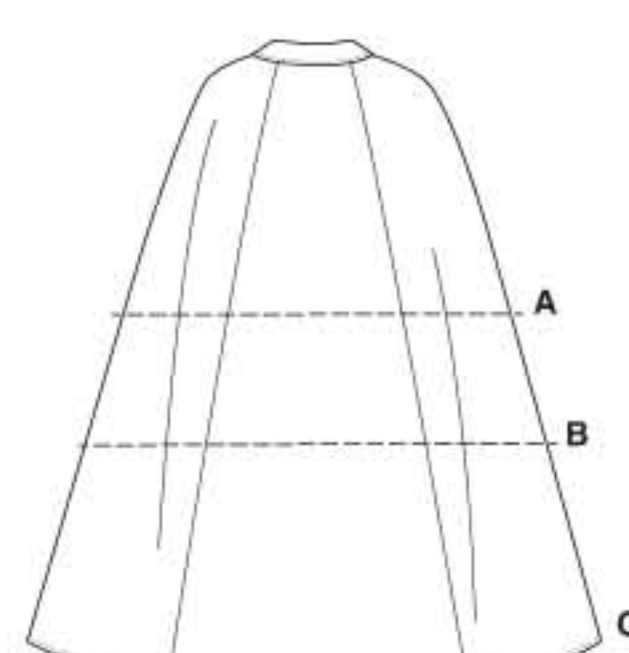
A



B



C



A-B-C



VOGUE PATTERN, 120 BROADWAY, NEW YORK 10271 © 2013 The McCall Pattern Co. ● www.voguepatterns.com

● PRINTED IN U.S.A. ALL RIGHTS RESERVED. SOLD FOR INDIVIDUAL HOME USE ONLY AND NOT FOR COMMERCIAL OR MANUFACTURING PURPOSES/RESERVE À UN USAGE PERSONNEL.