



WTC-1354T TRACK MOUNTED TUB GRINDERS

The WTC-1354T is a smaller mid-sized option for the producers who may require simplified transport. Although sized down more with a shorter hammermill assembly, to further reduce transport weight, the WTC-1354T does continue to share many features with the larger, top of the line, HTC-1464T. The WTC-1354T is able to be powered by the same size engine and torque converter, operated by the same hydraulic system, and is mounted on the same track drive system. The discharge conveyor system, and tub are similar to the standard mid-sized HC Series grinders. This combination maximizes the power while focusing more on the ease of transport.



- ***Allows grinding in wet weather or on soft terrain.***
- ***Eliminates building roads to get the grinder moved in.***
- ***Eliminates towing a truck & grinder on the job site.***

- ***You can position the grinder to achieve maximum production.***

- ***A HogZilla on tracks allows for convenient one-person operation and saves hours a day mobilizing the grinder from pile to pile.***



**UNPARALLELED
in Production, Mobility,
and Simplified Transport.**

WTC-1354T SPECIFICATIONS

Horsepower	CAT 1000 (Standard)
Torque Converter	1200HP Rated
Hammermill Diameter	31"
Feed Opening	31" x 54"
Screen Area	3321 sq. in.
Screen Thickness	1"
Hammer Weight w/ Tip	47 lbs.
Hammer Number	24 - 48
Rod Diameter	2"
Tub Top Width	13'
Belly Conveyor	3 ea. 12" Augers
Stacking Elevator	42" x 24'
Trans. Width	11' - 11"
Trans. Length	45'
Total Weight(approx.)	90,000 lbs.

Specifications subject to change without notice. As improvements are made, actual product offered for sale may vary in design.

Estimated Maximum Production Range

(tons per hour)

Yardwaste - 75-130

Stumps & Logs - 40-100

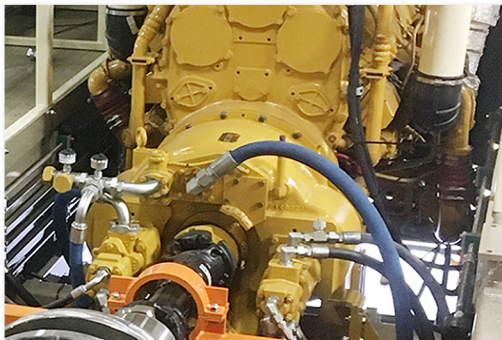
Pallet/Construction Waste - 30-100

Any stated production information is estimated and is subject to variables that may fluctuate. Machine configurations include performance options that are changeable, and the actual materials being processed may differ resulting in actual production variations. Other production variables include user-based circumstances such as specific job site set up, material input procedures, & operational setting adjustments.

Torque Converter Drive –

The engine is protected by the torque converter fluid absorbing shock loads and torsional vibrations from the hammermill assuring longer engine and drive system life.

An optional Hydraulic Coupling or Wet Clutch are also available.



CW Mill Equipment Co., Inc.

14 Commerce Drive, Sabetha, KS USA

800.743.3491 or 785.284.3454

Email: hogzilla@cwmill.com

Web: www.hogzilla.com

LET'S
CONNECT.



**CAT 325L
Tracks are
Standard**

**Hydrostatic
Tracks allow
for easier
navigation
in tight areas.**



**WC SERIES
HAMMERMILL**

**One-Person Operation
with Remote Control**



**A Remote Controlled Dual
Hydrostatic Drive is used
to drive the tracks.**

**The operator of the
loader or excavator
can stay safely
inside the cab while
moving the HogZilla
Grinder to different
locations allowing
one-person operation.**

