

URLINGFORD • KILKENNY • WEXFORD • SCOTLAND



HEAD OFFICE

📍 Unit 14, Urlingford Business Park
Urlingford, Co. Kilkenny E41 K821

☎ +353 56 8831418

@ info@mwhire.com



KILKENNY DEPOT

📍 Unit 30, Hebron Industrial Estate,
Co. Kilkenny R95 XR91

☎ +353 56 7761265

@ kilkenny@mwhire.com



WEXFORD DEPOT

📍 Drinagh Business Park,
Sinnottstown Lane, Wexford, Y35 E297

☎ +353 53 9168122

@ wexford@mwhire.com



SCOTLAND DEPOT

📍 2 Dunlop Place, Meadowhead
Industrial Estate, Irvine, KA11 5BJ, UK

☎ +44 1294620067

@ info@mwhire.co.uk

CONTENTS

- History
- Battery Banks
- Generators
- Cummins Generators
- Fuel Management
- Accomodation & Welfare
- Wind Farms
- Telehandlers
- Excavators
- Dumpers
- Compaction Rollers
- Access Equipment
- Compressors
- Water Pumps
- Towerlights
- Exports
- Extras







HISTORY OF MW HIRE

The MW Hire Group was established in 1992 by Matty Walsh.

Originally established as a local agricultural contracting business, Matty and his small team quickly adapted to meet the demands of larger projects, expanding their services to support civil developments and mining enterprises. Over the years the core sectors of the business have grown rapidly and evolved to meet our customers needs and the ever changing social and regulatory environment.

Fast forward to today, MW Hire Group is a bustling company headquartered in Urlingford, Co. Kilkenny with depots in Kilkenny City, Wexford and Irvine in Scotland. To ensure maximum compliance with regulations and customer service levels we are ISO 9001, 14001 and 45001 certified and Achilles Building Confidence accredited.

BATTERY BANKS

- Battery Energy Storage Systems (BESS)
- Nominal Output from 10kva to 90kva
- Single Phase and Three Phase
- Peak Output from 22kva to 240kva





BATTERY BANKS

GENERATORS

- Single Phase and Three Phase
- Available for Hire and Sale
- 3.5kva to 1100kva
- Sync Sets
- Towable Options Available





GENERATORS

CUMMINS GENERATORS

- 22kva to 1100kva Options
- Three Phase and Single-Phase Options
- Sync Sets Available
- Cummins Automatic Changeover Switches Available





CUMMINS GENERATORS

FUEL MANAGEMENT

- 950 Litres to 30,000 Litres Fuel Management Option
- Mobile and Static
- Direct Generator Feed
- Available with Electric Pump and Litre Meter







ACCOMMODATION & WELFARE

- Site Offices
- Site Canteens
- Drying Rooms
- Toilet Blocks
- Mobile Welfare Units
- COSHH Storage
- Temporary Storage
- Solar Loos
- Solar Showers
- Sleeper Units





WIND FARMS

- Solar Assisted Welfare Units
- Solar Showers
- Solar Loos
- Step Up Transformers
- 3 Phase Heaters
- Generators



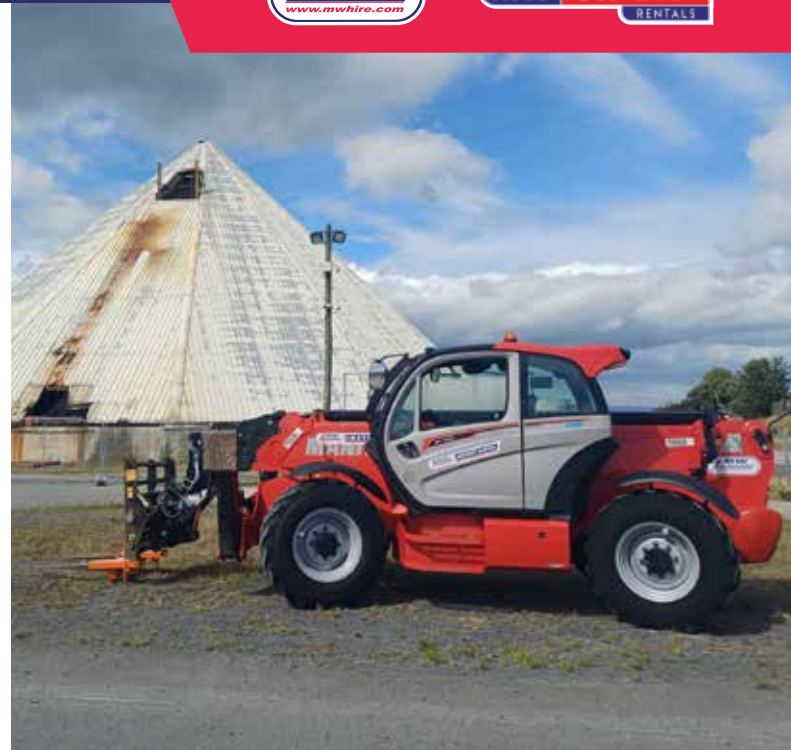


WIND FARMS

TELEHANDLERS

- 4m to 25m Reach
- Safe Working Loads of 2T to 5T
- Wide Range of Attachments





EXCAVATORS

- Micro Diggers
- Mini Diggers
1.4T to 3T
- Midi Diggers
5T to 10T
- Range of Attachments
Available





EXCAVATORS

DUMPERS

- Tracked Barrow
- 1T High-Tip
- 3T Swivel Cart
- 6T Swivel Cart
- 9T Straight Tip
- Cabbed Dumpers





DUMPERS

COMPACTION ROLLERS

- Pedestrian Rollers
- Twin Drum
800mm to 1400mm
- Soil Compaction
Rollers up to 15T





COMPACTION ROLLERS

ACCESS EQUIPMENT

- Articulated Booms
- Straight Booms
- Towable Cherry-Pickers
- Electric Scissor Lifts up to 14m
- Electric Boom Lifts
- Electric Mast lifts
- Aluminium Towers
- Spider Lifts





COMPRESSORS

- 90cfm - 800cfm
- 7 -24 Bar Pressure
- Adapters for All Applications





WATER PUMPS

- 2" - 8" Pumps
- Diesel
- Electrical Submersibles
- Float Switches and Timers Available
- Settlement Tanks and Filter Bags Available
- Towable Options Available





WATER PUMPS

TOWERLIGHTS

- Towable and Static
- LED Lights
- Hybrid or Diesel
- Options to Run on Mains Power
- Power Output Available





TOWERLIGHTS

EXPORTS

- Wide Range of Items Available for Export!
- Competitive Export Pricing with Bulk Capability.





EXPORTS



EXTRAS

- Wheel Wash Systems
- Wheel Bath Systems
- Gardening Equipment
- Power Washers
- Water Storage
- Dust Suppression Systems
- Traffic Management
- Skidsteers
- Plus Loads More!





EXTRAS



This image shows a single sheet of white paper with horizontal ruling lines. The lines are evenly spaced and run across the width of the page. There are no margins, text, or other markings on the paper.



**Power
Generation**
AUTHORIZED DEALER

