

F O R M O S T M A C H I N A R Y

---

---



---

C A T A L O G U E

# Table of Contents

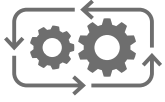
<b><u>WHY CHOOSE US?</u></b>	4
<b><u>AERATOR</u></b>	5
<b><u>BAGGING MACHINES</u></b>	6
<b><u>BATCH ROLLERS &amp; ROPE SIZERS</u></b>	7
<b><u>BISCUIT MACHINES</u></b>	9
<b><u>CANDY COOKERS</u></b>	10
<b><u>CANDY FORMING MACHINES &amp; LINES</u></b>	16
<b><u>CANDY PROCESSING MACHINES</u></b>	18
<b><u>CANDY WRAPPING MACHINES</u></b>	21
<b><u>CHOCOLATE ENROBERS &amp; COOLERS</u></b>	23
<b><u>CHOCOLATE PROCESSING MACHINES</u></b>	25
<b><u>CHOCOLATE WRAPPING MACHINES</u></b>	32
<b><u>COATING PANS</u></b>	39
<b><u>CONBAR LINES</u></b>	41

# Table of Contents

<b><u>COOLERS</u></b>	42
<b><u>CUT &amp; WRAP MACHINES</u></b>	43
<b><u>DZ ARM MIXER</u></b>	45
<b><u>EXTRUDERS</u></b>	47
<b><u>FLOW PACK</u></b>	49
<b><u>GUM MACHINES</u></b>	51
<b><u>LENTILS LINES</u></b>	52
<b><u>LOLLIPOP MACHINES</u></b>	53
<b><u>MARSHMALLOW PROCESSING MACHINES</u></b>	56
<b><u>MISCELLENIOUS</u></b>	52
<b><u>OVERWRAP &amp; SHRINK MACHINES</u></b>	57
<b><u>STICK PACK MACHINE</u></b>	58
<b><u>SUGAR MILLS &amp; STICKER MACHINES</u></b>	60
<b><u>WAFER MACHINES</u></b>	61

## W H Y   U S ?

---



With 45 years of expertise in refurbishing confectionery machines including candy, chocolate, and wafer equipment, we stand as industry leaders.



Our commitment to quality, innovation, and performance ensures that each machine is meticulously restored by our skilled technicians.



Choosing us means investing in decades of excellence and a partner dedicated to your sweet success and an insurance of purchase satisfaction as hundreds of our customers experience with us.



Chat on WhatsApp

Tel:  
009613118600

Note: Clicking on images and titles takes you to the desired machines on our website.  
Clicking on the footer takes you to our location



# Aerator



| product example

**1 A.C.M/ Trefa Continuous Aerating System** used for continuous aeration for, cream, batters, marshmallow, etc. **Capacity:** About 400 kg/hr. depending on the product being aerated.

**2 Morton Air Pressure Whisk, Type: APW 100** used for the production of batters, Swiss rolls mixtures, meringues, and marshmallow sponges of **Capacity: 110 Liters.**

**3 Tonelli Continuous Aerating System Type: REN-70** used for continuous aeration for, cream, batters, marshmallow, etc. **Capacity:** About 700 kg/hr. depending on the product being aerated.

**4 Morton Air Pressure Whisk, Type: APW 200,** it is used for the production of sponges, swiss rolls, meringues, and marshmallows and of **Capacity: 220 Liters.**

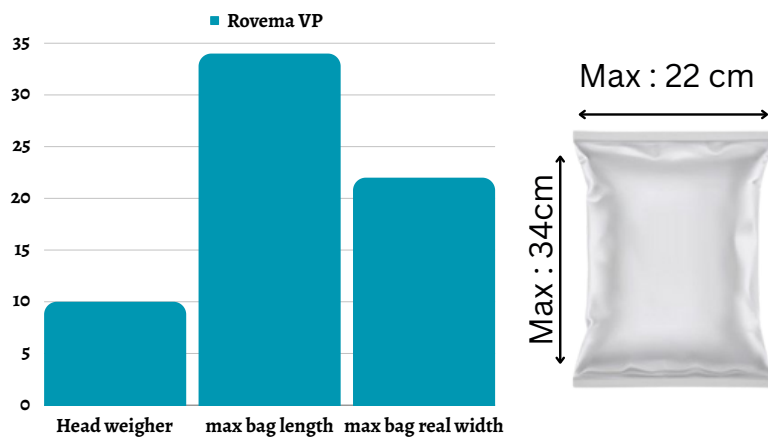
# Bagging Machines

## Rovema VP Vertical Wrapping Machine

To Weigh, form, fill & seal bags containing powder, candy, lollipop, etc.

With new:

- **10** Head weigher
- Bucket elevator
- Rovema VP vertical wrapper



# Batch Roller

## **Otto Hansel Batch Roller**



For forming candy cones before entering rope sizer

6 cones batch roller

Capacity approx. 75 kg

## **Pactec Nagema Batch Roller**



Usage: Forming of solid sugar cones for various end products

4 cones batch roller

Capacity: 50 kg

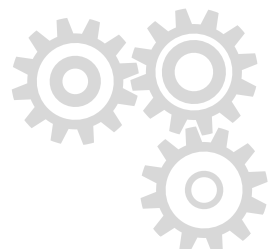
## **Bosch 19k Batch Roller**



Usage: Forming of solid sugar cones for various end products

4 cones batch roller

Capacity: 75 kg





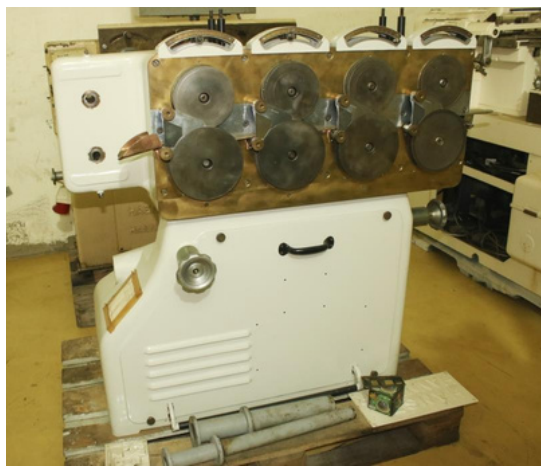
# Rope sizer

A rope sizer automatically spins and sizes down high-boiled sugar batches, with or without a center, striped or plain, pulled or ordinary. The thick rope discharging from the batch roller is fed into the rope sizer and passes through a number of stages rope sizer "varying from one rope sizer to another".

The rope sizer head is controlled with different motor with vfd for water protection and speed control.

**OTTOHANSEL**

**4 Stages**



**Bosch 164A**

**3 stages**



**Bosch**

**3 stages**



**Theegarten AM2**

**Bosch Hansella 65D**

**Bosch 165A**

**5 Stages**

# Biscuit Machines



## QUALITY DOUBLE LANE BISCUIT SANDWICHING MACHINE

For manufacturing biscuit sandwiches with cream filling, for both hard and soft biscuits.

Cream sandwich quantities can vary from 4-20PCS freely

**Capacity:** we have two capacity for you choose, 30L or 70L.

## Biscuit Mixer

Mechanical tilting for biscuit dough mixing

Type: Single Arm.

Capacity: 1000 Liter

Bowel Dimension: 110x90x120 cm





## Candy Cookers

### Klockner Hansel Siedomat Turbomix System

Klockner Hansel cooking/mixing and aerating system, type Siedomat Turbomix, for several types of masses like **aerated marshmallow**, **nougat** and **yogurt candy**, **marzipan**, **bar foam**, **torrone** and **halwa**

**Capacity:** 500 kg/hr



### Ter Braak Preswhip Air Pressure Whisk



**Usage:** for the production of **flavored nougat** and **aerated chewy sweets**, and other aerated products such as frappe, marshmallows, and centers for 'Count Lines' which are later extruded or rolled.

**Output:** up to 500kg/hr

## Candy Cookers



**Bosch Type 110C Copper Cooker**

It serves for producing caramel, toffee, and other low boiled batches.

A vacuum pump can be added which make this unit also suitable for cooking high boiled sugar batches as well as jam, and jellies.

Capacity: 110 kg/batch.

Machine dimension: 120x190x220 cm.



This Hamac Hansella machine is suitable for the production of croquant fillings for bars, eggs, sweets etc. and especially to mix croquant for chocolate centers.

This mixer has proved to be useful for cooking and mixing various other recipes, with planetary rotating blades ensuring thorough mixing of ingredients and preventing batch burning

.Capacity: up to 30 kg/batch  
Machine Dimension: 120x120x215 cm.



**Ottohansel Type HWRV SS Cooker**

Otto Hansel /Klockner Hansel Stainless Steel Cooker type HWR

For cooking soft & hard candy batches

Capacity up to 250 kg/batch

Machine Dimension: 160x190x220 cm.



**Hansella Type 5B Cooker**





# Candy Cookers



Polimex Batch Dissolver

Polimex batch dissolver for dissolving either granulated or liquid sugar.

It is a batch method of feeding sugar, water, glucose etc.

Can supply cyrup to Bosch 135A /145A cooker etc.

Approximate Capacity **300 liters**

Machine Dimension: 130x130x160 cm



Polimex Double Pot Cooker Type: **CAA18a**

The evaporator is used in sugar processing industry for boiling and vacuum thickening milk masses like: IRYS, TOFFI, KROWKA, water caramel and milk caramel.

Capacity: for dairy masses: **260 kg/hr**  
for caramel up to **180 kg/hr**

Machine Dimension: 180x160x240



Polimex Double Pot Cooker



Bosch Hansella 145 A continuous cooker

Automatic vacuum cooking plant  
Type: 145 A

For continuous cooking of dairy masses & Caramels.

Capacity: **500 kg/hr**



Used for cooking: Candy,  
Butterscotch, Milk boils, Toffee  
**Output:** 400 kg/hr or 880 lb/hr.



Baker Perkins Microfilm Cooker

# Candy Cookers

Armand Deprest Cooker.

Made from copper for fast heating, and it consists of movable stirrer.

Equipped with gas connection.

Capacity: **Up to 20 kg per batch.**

Machine Dimension: 180x180x280 cm.



Armand Deprest Cooker



Hansella Type 111A Cooker

Universal Batch Copper Vacuum Cooker Type 111A

This Hamac Hansella construction processes hard and soft caramel masses and can also be utilized for the production of fillings, marmalades, jams, and fruit jellies, and special syrups .

Output: up to **40 Kgs per batch, 1000-1200 Kgs per 8 hour.**

Machine Dimension: 130x120x190 cm.



Universal batch cooker theegarten R105 for cooking batches of soft candy

Capacity approx: **240L**

Machine Dimension: 110x90x260 cm



Theegarten cooker Type R105



# Candy Cookers



## OTTO HANSEL Vacuum Batch Cooker SKH II

Used for the cooking of all kinds of hard candies, toffees, soft caramel and jelly masses, candy fillings, jams, etc., and other processes where cooking and vacuuming are required.

### Capacity:

For high boiled sugar: approx. 225 kg/h

For center fillings: approx. 300 kg/h

## Stainless Steel Solvomat Type: **CMA10a**

It is a continuous method of feeding sugar, water, glucose etc. as well as metering, mixing, boiling and dissolving with subsequent delivery to an intermediate container.

Production rate: **1000 kg/hr**

Machine Dimension: 200x130x180 cm



## Spomaz Stainless-Steel Solvomat

The measuring, dissolving, and precooking machine "Solvomat" completely dissolve sugar then continuously mix it with the correct amount of glucose which is being heated only immediately before addition.

"It can be fed with liquid or granulated sugar". All ingredients are measured in the correct proportion and without variation.

Capacity: Adjustable from **660 to 2750 lbs of sugar per hour plus glucose.**

Machine Dimension: 200x130x180 cm.



## Bosch Type 126 E-D Copper Solvomat



## New Candy Cookers

---



Chat on WhatsApp

Tel: 009613118600

### **Spomaz Cooker**

For cooking sugar masses, with vacuum pump  
Made from stainless-steel  
**Capacity** approx. 250 kg/batch.

# Candy Forming Machines and Lines



**APV DEPOSIT LINE SINGLE STAGE**

Baker Perkins APV Starchless Depositing Line  
Usage: Candy depositor for fondant creams, toffees or jellies.  
Single stage depositor



**APV DEPOSIT LINE DOUBLE STAGE**

Baker Perkins APV Starchless Depositing Line  
Usage: Candy depositor for fondant creams, toffees, or jellies.  
Double stage depositor



**Bosch 160C Hard Candy Line**

Usage: Hard solid candy forming Line  
Consists of:

1. Bosch 19k Batch Roller, 4 cones and Center Filler
2. Bosch rope sizer type 165A, 5 stages
3. Bosch Hansella Forming Machine type 160C: can handle rope rates of up to 103 meters per minute

Capacity approx. 500 kgs/hr.



**Bosch 160C SOFT Candy Line**

Usage: soft candy eclair or gum, center filled or solid forming Line  
Consists of:

1. WLS Extruder with Center Filler
2. Bosch 165A 5-Stage Rope Sizer
3. Bosch Forming Machine Type 160C.

Capacity approx. 500 kgs/hr.



# Candy Forming Machines and Lines



**Hansella 160 c**

The Uniplast 160C forms a part of the renowned Hansella forming line  
It can handle rope rates of up to 103 meters per minute.



**Bosch/Polimex Candy Line**

Type: MEGAB  
Usage: Hard, center filled or solid candy forming Line  
Output: up to 500 kg/hr.



**EXECUTIVE CHAIN FORMING MACHINES**

Chain Die Forming machine:

Usage: For the production of both hard and soft chewy candies, gums, and caramel products without a center filled with liquid, jam, or paste.



**EROMEC CHAIN FORMING MACHINES**



**Hamac Hansella 160A**

This Hamac-Hansella machine produces continuously large quantities of completely seamless tablets or sweets, whether highly filled or solid.



**Hamac Hansella Type 85A**

Usage: for the molding of candy ropes into various shapes of products



# Candy Processing Machines

Ruffinati RCT 100



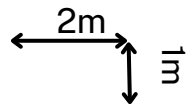
Ruffinati Continuous Cooling Drum type RCT100  
Used for the cooling of all types of caramels and toffees.

Machine Dimension: 180x170x180 cm.

Cooling Table



The table consists of steel plate with circulation channels welded on beneath; it is suitable for water cooling.  
Size: 2000mm\*1000mm



Scrap Grinder



Scrap Grinder  
Type: CR1000  
Candy Recycling Machine  
Usage: Breaker for hard-boiled rework  
Capacity: about 1000 kg/hr.

DIE-SET cleaners



Executive Candy mold washer  
Usage: cleaning rotary and chain die-sets

# Candy Processing Machines

Ruffinatti TZ40



Ruffinatti TZ40

Usage: Pull boiled sugar on a cooling table.

Capacity: Up to 40 kg per batch

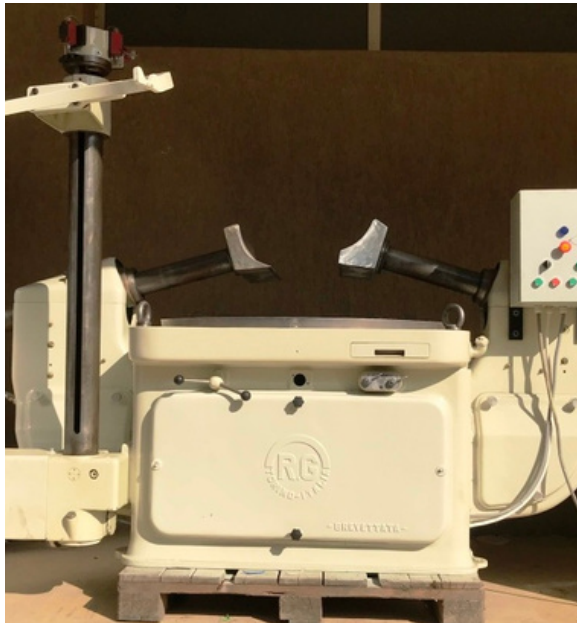
Machine Dimensions:

width 1400 mm.

depth 1590 mm.

height 1610 mm.

Ruffinatti Kneading Machine



Ruffinatti Kneading Machine

Type: IM30

Used for kneading boiled sugar.

Lifting Device type EIM.30

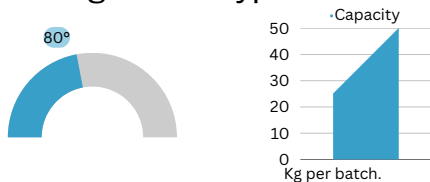


table makes regular 80° turns.

Capacity: 25 to 50 Kg per batch.

Ruffinatti Color Mixer N143

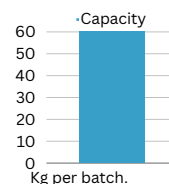


Ruffinatti Color Mixer

Type: ME70A/B

Used for mixing flavours & colors to sugar masses.

Machine Dimension: 100x100x150 cm



Capacity: Up to 60 Kg/batch



# Candy Processing Machines



## **Candy Puller**

Usage: For Pulling boiled sugar on a cooling table.

## **Euromec Candy Puller**

Basically, this machine may be used to create a variety of candies.

Naturally, this is utilized to manufacture a variety of candies, including parvada, soft candy, and hard candy.

- Toffee
- Mints
- Dragee
- Curative candy
- Marshmallow
- Taffy
- Praline
- Marzipan
- Caramels
- Licorice
- Nougat



# Candy Wrapping Machines

Nagema Type EL5



Usage: Suited for the wrapping of rectangular shape candy.

Capacity: Approx. 150 to 200 pcs/min.



Nagema EL9 Jambo



Usage: for hard candies in double twist wrap dies-formed or deposited sweets of round, oval or oblong shapes.

Capacity: up to 500 pcs/min.



Redpack Mini-wrap



Redpack mini wrap machine  
To wrap candies in pillow shape  
Computer controlled with photo registration with HMI  
Speed up to 500 pcs/min



Nagema EU8



EU8 machine for the wrapping of hard-boiled sweets in twisted wrapping.  
Capacity: 300pcs per min





## Candy Wrapping Machines

### Theegarten Pactec EL3

Universal packaging machine for preformed products in twist, bag, basket, and Viennese fruit wrap

- Output for double twist:  
Up to 450 products/min
- Output for Side twist, Viennese fruit touch  
Up to 350 products / min



## New Candy Wrapping Machines

### **Eurowrap 880 Mini-wrap Machine**

Used to wrap chewing gum, bubble gum, etc. in mini-wrap style/ mini pillow wrap.

Specification of candy: Length: 10-50mm



Chat on WhatsApp

Tel: 009613118600



# Chocolate Enrobers & Coolers



## **100 cm Sollich Enrober**

Sollich TSN1050 chocolate enrober  
Used for enrobing wafer, cereal bars, etc.  
Stainless Steel conveyor  
Useful width: 100 cm  
Controlled via PLC & HMI from Delta Automation

Machine Dimension: 210x180x190 cm



## **Nielsen Enrober**

Nielsen chocolate enrober  
Chocolate enrober for wafer, cereal bars etc.  
Made totally from Stainless-steel  
With stainless steel conveyor

Useful width: 40 cm



## **KREUTER COOLING TUNNEL**

Type 3KRS-KK-620  
Used for cooling chocolate, coated bars, etc.  
Approximate length 14 m  
Useful width 60 cm  
Consists of: 4 x covered sections approx. 2.4 m each  
+ 1 covered section  
With new refrigeration compressor



# Chocolate Enrobers & Coolers



## **SOLLICH DECORATOR**

Sollich 100cm Decorator  
For Decorating bars after passing through enrobers  
Useful Width 100 cm  
Fully made from stainless steel  
With stainless steel conveyor



## **Sollich type kk 1020 cooling tunnel**

Useful width 1000 mm  
Covered length 14 m  
Freon air cooling  
With 2 cooling cabinets about 10 HP each  
With belt correction



## **SOLLICH COOLER TYPE KS 820**

Type: KS820  
Usage: For Cooling chocolate enrobed product  
Covered length: 12 m  
Useful width: 800mm



## **SOLLICH Enrober 60cm**

Sollich branded chocolate coating machine  
Useful width: 60cm



# Chocolate Processing Machines



## **160cm Ballart Graniet Melanger**

Ballart Granite Melangeur

Type: 160

Usage: Vintage chocolate grinding machine

Bowl Diameter: 160cm

Capacity: approx. 90 kg/batch



## **Aasted Chocolate Depositor**

Usage: Depositor for molded chocolate

Capacity: depends on chocolate size

The depositor is fully controlled via Servo-motors, PLC, and HMI from Delta Automation.



## **Carle & Montanari Melanger**

Type: M.14

Usage: Vintage chocolate grinding machine

Capacity: 100 kg/batch.



## **Low and Duff Macintyre**

This machine is a Chocolate depositor one-shot compact molding plant used for the production of chocolate bars, both solid and cream filled with a wide variety of centers and shapes.

Mold size:

Width 200mm

length 470mm



# Chocolate Processing Machines



## **Carle & Montanari Rotary Moulder**

Carlo Montanari Forming Machine

Usage: Rotary Moulder to form Croquant or hard candy in different shapes.



## **Carle & Montanari Vermicelli Machine**

Usage: Production of chocolate Vermicelli/ sprinkles  
It may be used to decorate cakes and pastries, puddings, ice cream and other sweets. It adds taste, crunchy texture, and astonishing looks to any dessert

Extruder head is 300 mm.



## **Carle & Montanari Roaster**

Type: CM.3/100

Usage: Roaster for Cocoa, beans, nuts etc.

Capacity: 1Approx 132 kg/hr.





# Chocolate Processing Machines



## **Comeck Truffle Balling Machine**

Used to make ball shape truffles



## **Carle & Montanari Shell Depositing Line**

Carle & Montanari Cavemil Creme 275  
Confiseur shell molding line for chocolates

Usage: Chocolate Shell Depositing Line

Mold size: 275 x 205mm

Capacity: **10 molds per minute**

**Output: Approximately 250kg/hr.**



## **Universal Mixing Machine Stephan**

Type: UMB-60

Usage: For mixing, stirring, kneading, milling, homogenizing, etc.

Capacity: approx 60L



## **Metra Tempering and Mold Depositor Machine**

Chocolate mold depositor

Used to melt, crystallize, and de-crystallize chocolate to produce an end product that is glossy and rigid. Then allow depositing chocolate in molds.



# Chocolate Processing Machines

## **Miralles 3 Roll Refiner**

Usage: Chocolate refiner.

Useful width: 800 mm of rolls.



## **Frisse Chocolate Melangeur**

Used to mix chocolate paste before refiners.  
With mechanical tilting.

Bowl Dimension: 55x62x50 cm

Capacity: approx. 150 Liters.



## **MacIntyre 500kg**

MacIntyre Universal Refiner/Conche  
Capacity 500kg



## **Sottoriva Pastry Grinding Machine**

Model: **RP2**

With 2 Granite Rollers

Usage: suitable for grinding of almonds, hazelnuts,  
chocolate.



# New Chocolate Processing Machines

## Ball Mills

Ball mills are a type of grinder with usually a cylindrical shape used in the process of grinding and refining chocolate and other cocoa products.



**BM 15**

**BM 500**



**BM 100**

**BM 500Z**



**BM 300**

**BM 1000**





## New Chocolate Processing Machines



**Chocolate conche- refiner**

**Capacity: 500kg**

### **Peanut Butter Forming Machine**

Used to form peanut butter spread  
Fully made from stainless steel



# New Chocolate Processing Machines

## Chocolate Tanks

Used for storing chocolate after the refining process



**CT250**

**Capacity: 250 kg**

**CT300**

**Capacity: 300 kg**



**CT1000**

**Capacity: 1000 kg**





# Chocolate Wrapping Machines



## **GD Type 2120**

GD chocolate wrapping machine

Type: 2120

Usage: chocolate bunch wrapping machine

Output: approx. 150 pcs/min.



## **GD Type 2120 Rapid**

USAGE: Chocolate wrapping for various shapes, materials, and styles

CAPACITY: 180 wraps per minute



## **GD Type 2160B**

GD chocolate wrapping machine

Type: 2160-B

Usage: Can wrap chocolate from small 10g bars up to 100/125g bars.

Output: approx. 100 pcs/min



## **GD Type 2100U Coins Wrapping**

Type: 2100

Usage: Automatic adjustable machine for foiling & embossing coins or other shapes made of chocolate, and chewing gum.

Output: approx 100 pcs/min.



## **GD 2500**

**Suitable for Wrapping:** ball-shaped, cylindrical shaped, flat-bottom products in **Double twist** wrapping model

Output: up to 200 pcs/min. depending on pcs size.

# Chocolate Wrapping Machines



## **Loesch Type PSM Coins Wrapping**

Type: PSM

Usage: Form & wrap coin shape chocolate or chewing gum.

Output: up to 100 pcs/min



## **Nagema Type ED25**

Nagema chocolate wrapping machine

Type: ED25

Usage: Chocolate bunch/envelope wrapping machine

Output: up to 140 pcs/min.



## **Nagema Type EU7**

Pactec Nagema chocolate wrapping machine

Usage: Double twist chocolate wrapping machine

Output: up to 150 pcs/min.

There are two machines of this type



## **Nagema Type LPM1 Gofret**

Nagema Gofret chocolate wrapping machine

Usage: Chocolate envelope wrapping machine.

Output: up to 100 pcs/min



## **Rasch RU for Umbrella Shaped Chocolate**

Rasch RU is suitable for the wrapping of umbrella-shaped chocolate products.

Output: 60-80 pcs/min



# Chocolate Wrapping Machines



## **Rasch Type RKS NEU**

Rasch chocolate wrapping machine  
Usage: chocolate envelope  
wrapping machine  
Output: up to 200 pcs/min



## **Rasch Type RU**

Rasch chocolate wrapping machine  
Usage: bunch wrapping machine for heart shape  
chocolate.  
Output: up to 100 pcs/min



## **Rasch Type RD**

Rasch chocolate wrapping machine  
Usage: Chocolate top-twist wrapping (sachet)  
machine.  
Output: up to 120 pcs/min



## **Rasch Type RHE**

Rasch Chocolate Wrapping Machine  
Usage: for wrapping of rolling shapes,  
such as small balls and eggs.  
Output: up to 150 pcs/min.

# Chocolate Wrapping Machines



## **Rasch TYPE RK**

Rasch chocolate wrapping machine  
Usage: chocolate envelope wrapping machine  
Output: up to 120 pcs/min



## **Rasch Type RU Egg Wrapping**

Rasch chocolate wrapping machine  
Usage: Chocolate foil wrapping machine set for egg/round shape chocolate  
Output: up to 100 pcs/min



## **SIG DSR**

SIG chocolate wrapping machine  
Usage: wrapping of moulded tablets from 30 to about 100g.  
Output: up to 100 pcs/min



## **Sapal BNE**

Sapal Chocolate Wrapping Machine  
Usage: Adjustable high-speed wrapping machine for neapolitans and small bars.  
Capacity: up to 120 pcs/min.



# Chocolate Wrapping Machines



## **Sapal Type BBe cartoning machine**

Sapal cartoning machine

Usage: Cartoner for chocolate fingers.

Output: up to 100 pcs/min



## **Sapal Type BN-Label**

Sapal chocolate wrapping machine

Usage: chocolate envelope wrapping machine for small chocolate bars, neapolitans or other rectangular miniatures.

Output: up to 120 pcs/min.



## **Sapal Type PRLP**

Sapal chocolate wrapping machine

Usage: chocolate envelope wrapping machine

Output: up to 100 pcs/min



## **Sapal TD**

Adjustable high-speed wrapping machine for chocolate bars.

Two-stage wrapping either airtight or semi-airtight

Output:

- Up to 120 wraps per minute for plain chocolate bars
- Up to 110 wraps per minute for filled chocolate bars.
- Up to 90 wraps per minute for bars with nuts or other ingredients

# Chocolate Wrapping Machines



## **SAPAL BB**

- Adjustable automatic folding machine for chocolate bars and other parallelepipedal products
- OUTPUT: 120 chocolate bars/min
- Machine dimensions:  
3000x2260x1610 mm



## **SIG CL**

- Output: up to 120/min
- Usage: Automatic Wrapping machine for molding chocolate tablets and bars
- Size adjustability (approximate)
  - Max 170 ×90×12 mm HEIGHT
  - Min 90×35×6 mm HEIGHT



## **GD 2500 with aligner**

- GD double twist wrapping machine
- Output: approx. 200 pcs/min.



## **Sapal BRG**

Automatic Wrapping machine for chocolate tablets and bars

- Output:  
up to 40 to 60 bar per min



# Chocolate Wrapping Machines



## **Nuovafima T 012**

T-012 is proper for Single-Twist wrapping, either an inner or outer wrap or only an outer wrap

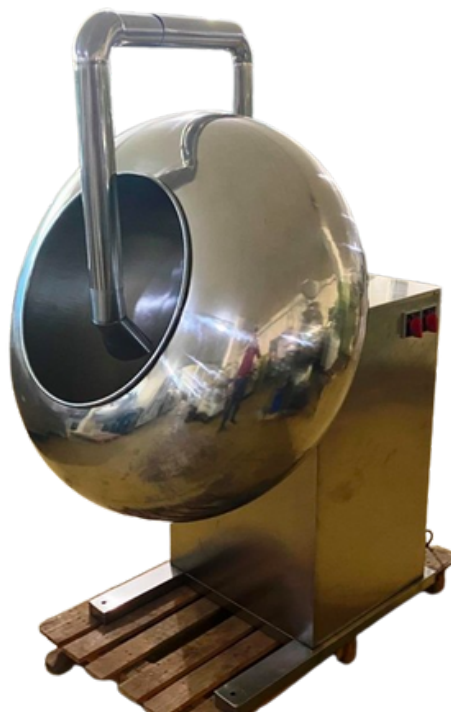
Can be equipped with a Feeder or Aligner

## New Coating Pans

### **100 cm Coating Pans**

Usage: For coating of peanuts, lentils, raising, dragees, marzipans, fondant, etc.

Diameter: 100cm



### **125 cm Coating Pans**

Usage: For coating of peanuts, lentils, raising, dragees, marzipans, fondant, etc.

Diameter: 125cm



Chat on WhatsApp

Tel: 009613118600

## Coating Pans



### **CARUGIL STAINLESS STEEL COATING PANS**

Type: CTM-200

Usage: Used in a wide range of coating and polishing processes in chocolate confectionery.

Capacity: Approx. 200 kg/batch



### **Copper pan for laboratory use**

Small-sized copper pan for laboratory use

Size: 5 kg



### **DTG Coating PAN**

Type: Finn Coater

Usage: Coating of peanuts, raising, dragees, marzipans, and fondant.

Capacity: Approx. 250 kg/hr



### **stainless steel pan for laboratory use**

Stainless Steel Pan for laboratory use

Size: 5 kg



## Coating Pans



### **100 Polimex Copper coating pan**

Dragée drum

Usage: designed for the production of confectionery of pharmaceutical dragées

Max. load of drum bowl: 100 kg

Bowl revolutions: 25,30,35 r.p.m

Bowl diameter: 950 mm



### **80cm Coating Pans**

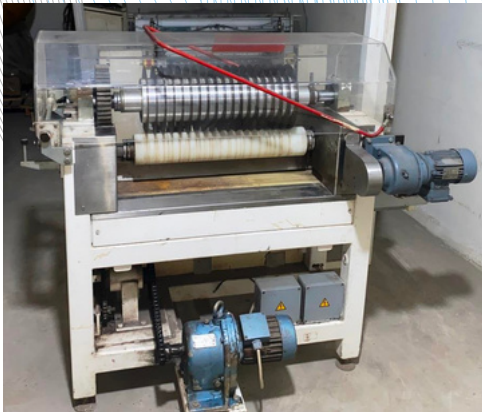
These machines are designed to coat products with chocolate and colorful layers.

Bowl Diameter: 800 mm

Bowl Depth: 700 mm



# Conbar Machines



## **Sollich Conbar Line**

Sollich Conbar Line with a useful width of 40 cm is good for cereal or nougat bar

Consists of:

**Sollich forming drum** Type WEB 600

**Kreuter Cooling Tunnel**

**Sollich Slicer & Splitter** Type SL60

**Sollich Guillotine Knife** Type SGU820

## **Sollich SGM600**

Sollich Knife

Type: SGM 600

Usage: Guillotine Knife

Useful Width: 60 cm

## **Sollich SL60**

Sollich Slicer

Type: SL60

Usage: Conbar splicer & slitter

Useful Width: 60 cm

## **Aasted Cereal Line**

Consists of: 1- Aasted double cooling drum.

2- Aasted single cooling drum.

3- Sollich 12m cooling tunnel.

4- Aasted slitter & spreader.

5- Hutt bepex Knife

Useful width can be adjusted between 80cm to 100 cm

Capacity depends on bar size.





## **WLS Cooling Tunnel**

WLS Cooling Tunnel

Usage: Cooling tunnel for soft masses

Useful Width: 500 mm, 9 Tier.  
Length: 10 m



## **WLS Cooler**

WLS Cooling Tunnel

Type: 63KT12

Usage: Cooling tunnel for soft masses

Useful Width: 180 mm, 7 Tier.

# Cut & Wrap Machines

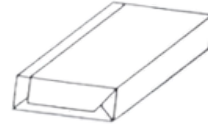


## Theegarten Pactec EW8

Theegarten Pactec Set for Bazooka

Usage: Forming, cutting and wrapping machine for chewing gum or bubble-gum products in double point end fold with comic strip as inner wrapper.

Capacity: up to 500 pcs/min



## AMP Rose Face Cut Machine 750W

AMP Rose Face Cut Machine

Usage: Cut & wrap machine specially designed for Face-cut

Capacity: Up to 300 pcs/min



## Pactec Nagema EW5 Line

Soft Candy Nagema Line

Usage: forming, cutting & wrapping of soft candies.

Capacity: Up to 500 pcs/min



## Theegarten Pactec EW5

**Usage:** Shaping and wrapping of:

Hard and Soft Caramels

Toffees - Chewy Sweets

Chewing Gum

**Output:** up to 600 products / min

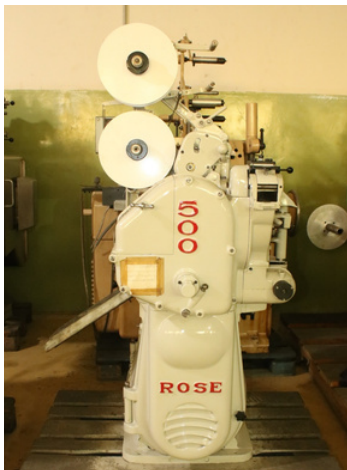
**Wrapping styles:** Double Twist, Bottom Fold

Bottom Fold





# Cut & Wrap Machines

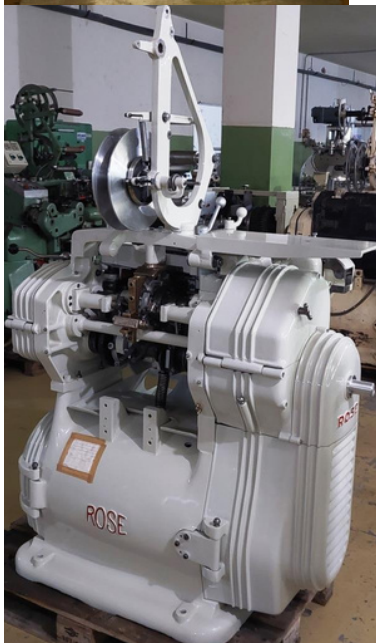


## **ROSE 500 Face Cut**

Rose 500 is a cut & wrap machine specially designed for face-cut pieces.

Usage: Soft candy face cut machine

Set for double twist wrapping style



## **ROSEFORGROVE FWT 503 FACE CUT**

Rose 503 is a cut & wrap machine specially designed for face-cut pieces.

Usage: Soft candy face cut machine

Set for double twist wrapping style



## **THEEGARTEN Pactec EW5**

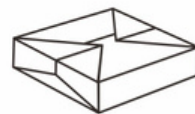
Usage: forming, cutting & wrapping of soft candies.

Folding type

- Double Twist
- Bottom Fold

Capacity: Up to 500 pcs/min

Bottom Fold



## **Theegarten Pactec EW5 Candy Line**

Soft Candy Theegarten Pactec Line Forming, cutting, and wrapping line consists of:

1. Pactec Nagma 4-cone batch roller: batch capacity of up to 50 kg.
2. 4 stages Rope Sizer
3. Theegarten Pactec EW5: Cut and Wrap Machine

## DZ ARM Mixer



### **Eurowrap Gum Mixer**

Eurowrap DZ Arm Mixer

Usage: Gum Mixer

Capacity: Approx. 200 kg

### **Werner & Pfleiderer DZ Arm Mixer**

Type: UK450K35

Usage: for mixing Gum

Capacity: approx. 500 L



### **Werner & Pfleiderer DZ Arm Mixer**

Baker Perkins DZ Arm Mixer

Usage: Mixer for gum.

Capacity: Approx. 50 to 80 Kg





## DZ ARM Mixer



### **Baker perkins L017**

Double jacket, stainless steel from inside,

with a tube under the bowl to unload it,

Capacity 1000L

The bowl dimensions: 117\*115\*110

### **Werner & Pfleiderer 1000 L DZ Arm Mixer**

Usage: Mixer for gum or gum base

Hydraulic Tilting

Bowl Dimension: 130x110x85 cm

Machine Dimension: 450x250x200 cm

Capacity: Approx. 1,000 Liters



### **Baker Perkins 1,000L Mixer**

Dz arm mixer for gum or gum base

capacity approx 1,000L

Mechanical Tilting



### **New Eurowrap DZ Arm Mixer**

#### **New Machine**

Used as gum mixer

Mechanical tilting

Capacity approx. 500 kg,



# Extruders

## Mazzoni Extruder

Usage: Extruder for soft candies or gum

Diameter of screws: 10 cm.

Capacity: capacity depends on rope size.



## Mazzoni Extruder

Mazzoni Single screw extruder with a feeding roller

Screw diameter 13 cm

Capacity: 300 to 500 kg per hr



## Hutt Bepex Hosokawa Extruder

Sheeter/extruder model FP200-800LA with 780mm wide rolls  
Driven plastic calibration roller.



## WLS KM4 Extruder

It is decent for gum and soft candy manufacturing, whether they are solid or center-filled, round or flat rope.

Equipped with two screws

The Extrusion diameter of each screw: 10cm





## Extruders



### **BOSCH TOGUM COMECK EXTRUDER TO 2-122**

This co-extruder may extrude a wide range of combinations, including multiple colors, different products, and various profiles, depending on the shape of the nozzle.

There are two options for operating:

1. Single- color of 10 heads/nozzles
2. Double color with 5 heads/nozzles

## New Extruders

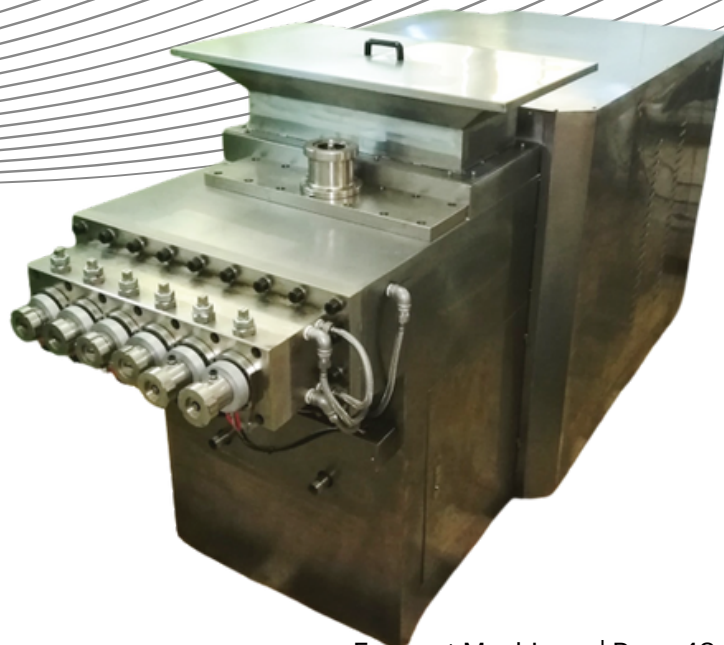


### **Eurowrap Double Color Extruder**

Heavy Duty Double-Color Extruder  
It can hold from 1 to 6 ropes and lines.  
It is equipped with various head shapes

### **Eurowrap Single Color Extruder**

Extruder for soft candies or gum.  
Easy to change output shape, can  
extrude up to 4 ropes.



# Flowpack

## Rose Forgrove Flowpack

Type: 84GE

For wrapping candy, cake, wafer bars, cereal bars, etc.

With new PLC & HMI from Delta Automation

With print registration

With One head Knife



## Solpak Flowpack



Type: FP0

Usage: For wrapping candy, cake, wafer bars, cereal bars, etc.

With new PLC & HMI from Delta Automation

With print registration

With One head Knife

Capacity: up to 100 pcs/min





## New Flowpack



### **Eurowrap 380 Flowpack**

Automatic feeding Flowpack machine  
Used to wrap chocolate bars, wafer, other bar products.  
With Automatic 90 degree feeder  
**Capacity:** up to 200 pcs/min



Size of package:  
Length: 100 -210 mm



### **Eurowrap 280-B On-Edge Flowpack**

Suitable for packing on-edge biscuits, cookies etc.  
**Capacity:** 30-80 bag/min



Film width Max.350mm  
Bag Length 130-450mm  
Product width 30-70mm  
Product height 30-65mm

# Gum Machines

1



2



3

4

5

1

**Rudolph Scheffuss Coin Cutter** Used for cutting gum into coin shape  
With 8 cutting heads

2

**Comeck Ball Gum Line** Type: PRS used for making ball gum  
**Capacity:** depends on pieces size

3

**Redington 12 Pcs Cartoning Machine**  
Wrap Gum Pallets in **12 pcs/cartoon**

4

**WLS Rolling & Scoring Line** Type: The Red Line Usage: Gum forming Line  
**Capacity:** 2,000 kg/hr.

5

**Redington 2 Pieces Gum Cartooning Machine**  
Type: 84-400 **Usage:** 2 pieces Gum Cartooning Machine  
**Capacity:** up to 100 packs/min.



## Lentils Line



**Used Aasted  
Chocolate Ball Shape  
Drum Forming**

### **Dimensions**

- Ball shape diameter: 15mm
- Drum Width: 60 mm
- Drum Diameter: 30 mm

## New Lentils Line



**Lentils Forming Line**

- For the production of chocolate lentils
- 2- Vibrator Drum.
- Capacity: depends on pcs size.

## Miscellenious



**Paper Slitter**

# Lollipop Machines



**LATINI TYPE C**

## **Continuous die pop and wrapping machine**

**Usage:** feeds, sizes, cuts, forms, insert sticks, wraps, and ejects finished pops

**Output:** up to 225 pops/min



**Aquarius BU400**

## **Aquarius ball lollipop bunch wrapper**

- **Usage:** ball lollipop wrapping machine
- **Output:** up to 400 pcs/min



**Aquarius RLM2**

## **Aquarius lollipop forming machine**

- **Usage:** Production of ball and cylindrically shaped lollipops.
- **Output:** up to 400 pcs/min.



**Carugil CWL 400**

## **Carugil ball lollipop wrapping machine**

**Usage:** Ball lollipop bunch wrapping machine

**Output:** up to 400 pcs/min



**Latini type DPW**

## **Latini Lollipop Forming & Wrapping Machine**

**Usage:** Forming & Wrapping of lollipop(Polo Shape)

**Capacity:** Up to 200 pcs/min



# Lollipop Machines



**LATINI 1 TYRE  
COOLER**

**Usage:** Cooling of flat lollipops

Useful width: 80 cm

Length: 610 cm

Equipped with Air Blower



**EUROMEC Lollipop  
Chain-forming &  
Wrapping Machine**

**Lollipop Chain-forming &  
Wrapping Machine**

**Mode:** 72ST/L- 130INC

**Usage:** Flat & 3D Lollipops,  
Unfilled and Filled lollipops

**Output:** 1000 Pcs/min



**Pactec Nagma  
Lollipop Wrapping  
Machine**

Pactec Nagma ball lollipop  
**twist-on top** wrapping  
machine

Capacity: up to 200 pieces  
per minute.

## New Lollipop Machines



**Eurowrap Ball Lollipop Forming Machine**

**Model:** Eurowrap 528  
Form ball shape lollipops.  
**Capacity:** up to 500 pcs/min.



**Eurowrap Lollipop Cooler**

Eurowrap Lollipop Vibrator Cooler

Lollipop cooler & vibrator using air blower



**Eurowrap Spherical Lollipop Wrapper**

This **Eurowrap** machine is used for spherical lollipop wrapping. It is easy to use and has a great sealing effect.



Chat on WhatsApp

Tel: 009613118600



# MARSHMALLOW PROCESSING LINE

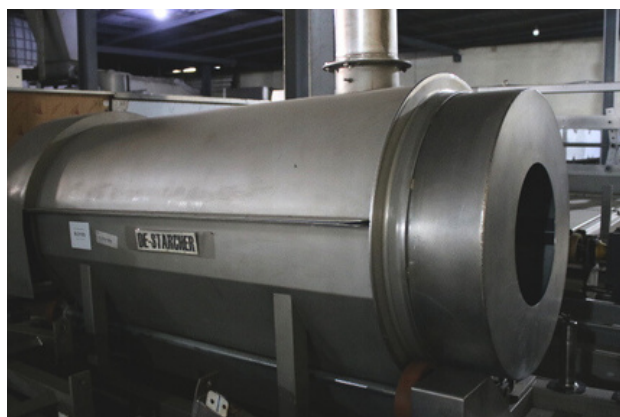


An excellent complete MARSHMALLOW LINE from Mandomix of **capacity: 100~150kgs/h**



Composed of:

- Cooking System
- Continuous Aeration System
- Extruding unit of **12 heads** including the Conveyor of useful **width 1000mm** and **length of 20m** and a De-starching unit at the end.



# Overwrap & Shrink Machines

## **Kallfass Shrink Machine**

Kallfass Universa 8060 Sealer

L-sealer with shrink oven

Product: 750 x 500 x 140mm



## **Aucouturier Shrink Machine**

**Usage:** Shrink machine for cartoons.

## **Sollas 17**

**Usage:** over wrapping machine





# Stick Pack Machines



## EW6/F1

Usage: Plant to form, cut and wrap products in fold wrap with simultaneous overwrapping in flat stick packs.

Capacity: Up to 650 individual products/min.



## Loesch ICW Korea

Logomat Gum Stick Pack Machine

Type: ICW

Usage: Gum Stick Pack Machine

Capacity: 900 single sticks per minute.



## GD 5000F Finseal

Usage: Candy stick pack machine

Output: up to 430 individual wrapping per min.



## FWT-F1

ROSE- THEEGARTEN

Batch Roller and Rope Sizing Machine

FWT: Forming , cutting, and wrapping machine

F1: Stick Pack machine

Size limits	FWT	F1
Length	15-40mm	15-120mm
Width	12-25mm	15-30mm
Thickness	6- 16mm	6-30mm
Output	Max 600	Max 240

## Stick Pack Machines



### **GD5000 B**

Usage: Candy stick pack machine

Output: up to 430 individual wrapping per min.



### **ROSE THEEGARTEN U1-F1**

High-Speed Plant to **form, cut, and wrap** soft or hard caramel, toffee, chewing gum, or bubble gum in double-point end fold with simultaneous overwrapping in stick packs (on edge).



### **Autowrapper S2000**

Auto Wrapper Stick Pack Machine

Usage: Roll wrapping machine for candy, gummies, etc.

Single wrap with folded or twisted ends. with or without band label.

Output: up to 200 sticks/min.



### **ACMA 780**

Candies are wrapped individually on an edge or flat, then collated, and finally wrapped in stick form in many different packaging styles.

**Product Wrapped:**

rectangular or square candies, solid or filled



## Sugar Mills

### **Italo Danioni Sugar Mill**

**Usage:** for grinding; sugars - spices - alimentary dyes - lyophilized products - flours etc.  
Especially fit for obtaining high milling with thermo-sensitive or greasy products.



## New Sugar Mills

### **Eurowrap Sugar Mill**

Fit for obtaining high milling with thermo-sensitive or greasy products such as sugar.



## New Stickers Machine

### **Chocolate Stickers Machines**

Stickers machine from Top or Bottom depending on your needs.  
Output up to 100 pcs/min,



## Wafer Machines



### **HAAS CREAM SPREADER WITH ARC COOLER**

Usage: Spreading cream onto the wafer sheets

Type: STM/STMK

Capacity: 32 wafer sheets/ min

The books are built by gravity stacking.

### **HASS WAFER BOOK COOLER**

FRANZ HAAS WK60 wafer machine

Type: WK60

Automatic cooler efficiently cools wafer books using pre-cooled tongs on an endless chain in minimum space.

Capacity/hour for 5-layer blocks (pcs.):  
600



### **HAAS Swakt 48 Baking Oven**

WAFER Sheet gas-fired oven

Model SWAKT 48

Capacity: 24-30 sheets/min  
wafer sheet size 46cm x 29cm



HAAS Swakt 48 Baking Oven



## Wafer Machines



### **HASS WAFER Production Line**

An excellent complete HAAS wafer production line including :

HAAS Swakt 48 Baking Oven

Wafer arch cooler

HAAS Automatic Spreader

HAAS Book Cooler

Wafer Cutter

Wafer sheet size: 46cm x 29cm

Capacity: 24-30 sheets/min

### **HEBENSTREIT Film Wafer Spreading Machine**

High-capacity spreading device for the film method of completely automated cream application. Using the film method, the film knife takes the cream film from the spreading roller and transfers it gently onto the wafer sheet.

Spreader head versions are available for cream, chocolate, caramel, or jam.

**Output:** up to 120 wafer sheets per minute

**Spreading Width:** up to 1,000 mm



# PROJECT TIMELINE





**C O N T A C T   U S   F O R  
M O R E   I N Q U I R I E S :**

---



**Phone**

Tel: 009613118600

**Email**

info@formostmachinery.com

**Website**

<https://www.formostmachinery.net/>

**Location**

Old saida road, beside  
eastwood college,  
Kfarshima, Beirut,  
Lebanon



Formostmachinary

Formostmachinary