

# YVAA System Components

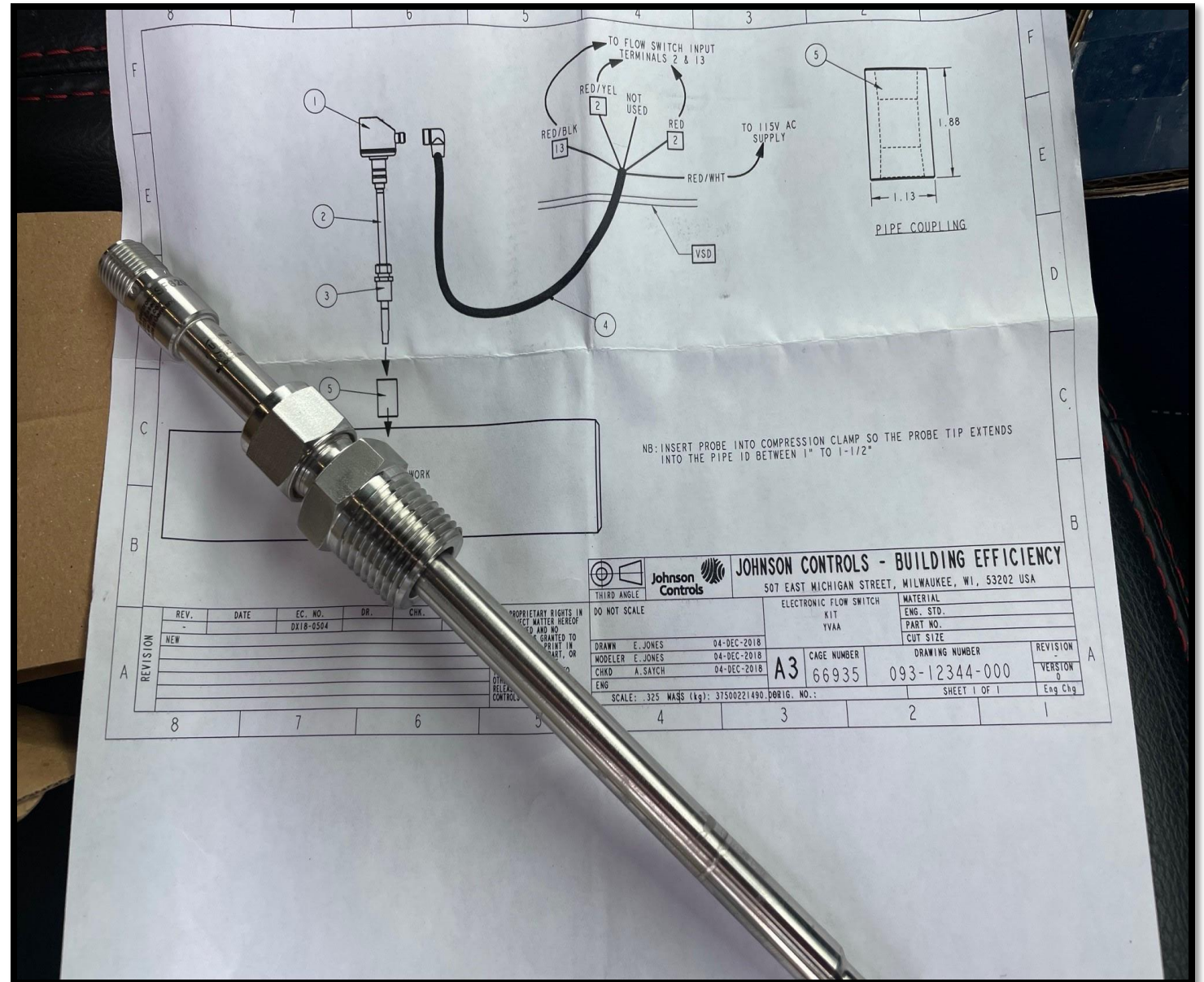
# YVAA System Components

## Thermal Dispersion Switch

This image illustrates the thermal dispersion switch used in YVAA systems. It ensures precise heat regulation and contributes to overall system efficiency.

## Key Features:

- Precision thermal control
- Integrated safety mechanisms
- Designed for high-efficiency HVAC systems



## 🔥 Heater Box Enclosure

The heater box enclosure protects internal heating elements and maintains thermal integrity in YVAA models.

### Highlights:

- Durable casing for extended lifespan
- Enhanced thermal retention
- Easy access for maintenance

