

Rossi

HONDA

We Treat You Better...Period

1517 South Delsea Drive, Vineland
856-692-1700
Se Habla Español

\$500 OFF Pre-owned Cars

Take \$500 off ANY Pre-owned Vehicle during the month of February!

NO COMMITMENT
NO CATCHES
NO KIDDING

planet fitness

ONLY \$1 DOWN & \$10 A MONTH!

~ expires 3/3/15 ~

101 Bluebird Lane • Millville, NJ 08332
(in the Lowes Center adjacent to Big Lots)
(856) 300-2088

www.facebook.com/Planet.Fitness.Millville.NJ

Home club only. Billed monthly to a checking account. Subject to a \$29 annual membership fee. With a \$1 One Time Start Up Fee. Includes t-shirt. Must be at least 18 years old, or 13 with parent/guardian. Incentives offered for enrolling in other memberships. Participating locations only. Planet Fitness facilities are independently owned and operated. ©Planet Fitness

OPEN 24/7

f t y d

INSIDE: PRIZEWEEK PUZZLE: PG. 13 • MICHENER VISIT • BREATH OF LIFE TOUR • LENTEN EVENTS

VOLUME 8 | ISSUE 4 | FEBRUARY 25, 2015

The Grapevine

CONNECTING YOU TO SOUTH JERSEY. WEEKLY.

Wizardry of Orazi

Local musician produces magical music for *Wizard of Oz* sequel, original musical to premier at historic Delaware Children’s Theatre next month.



Chris Orazi in his studio at C.A.S. Music Productions. Orazi composed all of the music and co-wrote lyrics for 15 songs. He also arranged all vocals and produced an original soundtrack. Orazi played keyboards, guitar, percussion, and drums on the soundtrack.

If you are a Wizard of Oz fan, get set to follow the yellow brick road to Wilmington, DE, where the original story’s sequel, *Welcome Back to Oz: The Patchwork Girl* will be performed at the Delaware Children’s Theatre in March. With it will come 15 brand new songs, composed by Chris Orazi, of C.A.S. Music Productions in Vineland, NJ. The music features lyrics written by Orazi and Daytime Emmy-winning writer Donna Swajeski, artistic director and owner of the Delaware Children’s Theatre.

“Of all the projects I’ve worked on over the last 30 years, this one has inspired me in new and different ways,” says Orazi. “Unlike other children shows I’ve written for in the past, this one’s music rocks. It’s more contemporary than you might expect with lots of pop and jazz elements and feels. The experience has been incredible, especially when arranging vocals for 30-plus actors, not to mention munchkins. Whether you’re a child or an adult, we think this will be a pretty magical theatrical event.”

Set in Oz’s Emerald City, the musical, inspired by the book written by L. Frank Baum, includes all the characters you know and love. Dorothy, Tin Man, Lion and Scarecrow will be joined by two new heroines—Ojo, a lovable munchkin, and Scraps, her rag doll who comes to life.

Dorothy leads her friends on a quest to help find Glinda the Good Witch so she can stop the Wicked Witch from practicing forbidden magic. Along the way, Dorothy meets some classic L. Frank Baum characters including Wogglebug, the Nome King, and the Rainbow’s daughter. The show premieres on March 7

4-H Ambassadors Honored at State Convention



Cumberland County 4-H Ambassadors KayLynn Hyson of Millville and Jacob Newkirk of Bridgeton and Cumberland County 4-H Equestrian of the Year Heather Koering of Vineland attended the New Jersey State Agricultural Convention Delegates’ Dinner on February 4, in Atlantic City. They participated in a long-standing tradition, the presentation of the agricultural youth leaders to the convention delegates. The dinner was highlighted by a visit from Lt. Governor Kim Guadagno.

From left: Lt. Gov. Kim Guadagno, Jacob Newkirk, NJ Secretary of Agriculture Douglas Fisher, Heather Koering, KayLynn Hyson and State Board of Agriculture President Richard Norz.

FRIDAY, MARCH 13
7th Annual Hometown Heroes Gala. Merighi’s Savoy Inn, E. Landis Ave. and Union Rd., Vineland, 691-8051. 6 p.m. Join *The Grapevine* in celebrating this year’s 21 honorees. DJ/Dancing, Buffet Dinner, Cash Bar, Silent Auction, 50/50 Raffle. Proceeds go to the Rotary Club of Vineland Charities Foundation and The Cumberland Cape Atlantic YMCA. Tickets \$70 for one, \$65 each for multiple tickets. Tickets can be purchased at *The Grapevine* office across the parking lot from Larry’s II Restaurant & Café, 907 N. Main Road in Vineland or by calling 856-457-7815.

Residential Customer
Local
ECRWSS

PRST STD
US Postage Paid
Permit No. 794
Bellmawr, N.J.

Continued on page 9

DANCE

Does A Body Good

The Vineland Regional Dance Company's
36th Annual Spring Dance Concert
Sunday, March 15 • Curtain 2 p.m.



Frank Guaracini Jr.
Fine & Performing
Arts Center



Cumberland County College
Vineland, NJ

Tickets range in price from \$20 - \$35
856-691-6059 or www.vrdc.org

Funding for this program has been made possible in part through a grant from the Cumberland County Cultural & Heritage Commission, through the Board of Chosen Freeholders, and made available by New Jersey State Council on the Arts.



Supported in part by a grant from NJ Department of State, Division of Travel and Tourism. This grant is administered by the Cumberland County Cultural and Heritage Commission and Tourism Advisory Council.



Faces in the News



4-H Member Jillian Tozer Takes Awards at Model Horse Show

The Cumberland County 4-H Youth Development program congratulates 4-H Member Jillian Tozer on her recent grand champion award at the State 4-H Model Horse Show. Tozer, together with 4-H Member Lacey Crawford, served as Cumberland County's representatives at the event, which also included youth from Warren, Monmouth, Middlesex, Hunterdon and Gloucester counties.

The New Jersey 4-H Model Horse Project is an educational program, which involves the collecting, photographing and showing of model horses. 4-H horse lovers of all ages enjoy participating in this project. Cumberland 4-H Agent Julie Karavan appreciates the artistry involved in the project as well as the

means to include young people who may not have their own horse. "Like Cumberland County's 'horse-less' horse clubs, this project can accommodate 4-Hers who ride as well as those who are passionate about horses, but may not own horses or who, because of health reasons, cannot physically work around live horses."

4-Hers discover the structure of the horse—anatomy and conformation; way-of-going; colors; markings; proper tack, equipment and attire; and styles of riding and showing. Numerous skills are developed in sculpting, painting, leatherwork, photography, collecting and record keeping.

For information about the Cumberland County 4-H Program, call the 4-H Office weekdays 8:30 a.m. to 4:30 p.m. at 856-451-2800, ext. 3. Additional information on free 4-H clubs accepting new members is also available on the website: cumberland4h.org. Find them on Facebook at Cumberlandfourh and Cumberland Clover.



Law School Student on Dean's List

Jonathan Triantos, a second-year law student at Rutgers University School of Law, Camden, has been designated a Dean's Scholar for the Fall 2014. His GPA is in the top five percent of all students enrolled at the law school. He is the son of John and Lorie Triantos of Vineland.

Happy NAILS & SPA

1766 S. Lincoln Ave., Vineland, NJ 08361
(South Lincoln & Dante Ave.)
856-563-0004

&

Nails 4 U & Spa

3722 E. Landis Ave., Vineland, NJ 08361
856-507-1155 or 856-507-1551
Landis & Lincoln Avenues across from ShopRite

ANNOUNCES

★ They are Now 1 Company ★

\$2 OFF
Gel Manicure

exp. 5/13/15

Appointments & Walk-ins Welcome

Hours: Mon.-Fri. 10 am-7:30 pm

Sat. 10 am-7pm • Closed Sundays

Nail Care • Full Day Spa Service • Facial
Body Massage • Eyelash Extension
Permanent Makeup • Waxing
Birthday & Bridal Spa Party Available

Gift Certificates Available



Vein & Vascular
INSTITUTE



Before and After 20 min in-office procedure

Do You Suffer From:

Varicose Veins
Spider Veins
Leg Swelling
Leg Ulcers
Leg Pain & Cramps
Restless Leg Syndrome



FREE VEIN SCREENING

VINELAND: March 9 & 16

VOORHEES: March 10 & 12

SEWELL: March 11 & 13

Limited Space - Call Today! **(856) 469-4564**

www.VeinVascularNJ.com

Charles L. Dietzek, DO, FACOS | Medical Director

CompleteCare's Smile Smart Program Marks Dental Health Month

To celebrate National Children's Health Month CompleteCare Health Network has coordinated a series of educational events throughout Cumberland County to increase the community's awareness on the importance of starting dental hygiene at a young age.

On February 19, the organization was honored with a proclamation from Bridgeton Mayor Albert Kelly at the CompleteCare Smile Center in Bridgeton for all of the work they do in the community.

Smile Smart is a collaborative dental program started in 2005 by CompleteCare, offering parents and schools the option of having children picked up during the school day and transported to a nearby CompleteCare dental facility to have services completed by staff dentists and hygienists. After treatment they are returned to school and parents are notified about the visit and the next steps in treatment, making it convenient for working parents.

The Smile Smart program also helps to fill a need in communities like Bridgeton and surrounding areas for access to high-quality, affordable and convenient dental care. In these and other disadvantaged areas, health disparities, especially in access to dental care and increased rates of oral diseases, continue to grow for children, the elderly and racial/ethnic minority groups.

Currently, only one in five children from low-income families receives dental sealants to prevent dental caries. And, according to the National Institute of Health, dental caries remain the most common chronic disease among children, five times more common than asthma and seven times more common than hay fever.

"The Smile Smart program's sole focus is getting children access to the dental care that they need," said Meghan Spinelli,



ABOVE: De'Moni Curley, age 7 poses with pediatric dentist Dr. Brendaliz Bristol-Martir before her visit at CompleteCare's Smile Center, Bridgeton.

Vice President of Community Services at CompleteCare Health Network. "Often we see fifth graders who have never been to the dentist or kids that have ten or more cavities needing to be filled. Being able to reach the kids earlier through the school nurse has been a huge help in creating healthier smiles in our community." Offering convenient dental access is key for Smile Smart, as dental care is often left out when many think about their health. According to The Pew Center on the States, poor dental health can have a significant impact throughout a person's life. One cavity can easily lead to many and untreated dental issues can cause serious illness, tooth loss, missed school days and even difficulty finding work later in life. Children from poor families continue to be most affected by dental decay; kids age 2-11 in families that live below the federal poverty level are twice as likely to have untreated decay as children from more affluent families.

TOP: Bridgeton Mayor Albert Kelly presents CompleteCare Smile Smart Coordinator Dana Profero with a proclamation for Children's Dental Health Month at CompleteCare's Smile Center in Bridgeton.

CENTER: Ja'Tron Gardner, age 6 waits with Cherry Street school nurse Marissa Stoddard, RN, MSN before he leaves for the dentist.

Celebrate Our
2ND ANNIVERSARY

with a suit special!

\$2 OFF
All Suits
in March 2015



Pick Up and Delivery Only
by your favorite dry cleaner
~ Al Trasferini ~

 **Ideal Dry Cleaning**
Dry Cleaning, Laundry and Expert Alterations
lynn@idealsouthjersey.com
856-899-5801



The
Ellison
SCHOOL

OPEN HOUSE

THURSDAY, MARCH 5, 6-9 PM

Dinner will be provided

Tuition Assistance Now Available

Accepting Applications for Fall
Limited Space Available

Toddlers • Preschool • Grades K-8
Celebrating 56 Years of Academic Excellence



To pre-register for Open House please contact Tarah Tobolski

1017 South Spring Road, Vineland, NJ 08361 • (856) 691-1734
www.ellisonschool.org

News in Brief

Citizen Police Academy to Start Spring Session

The Vineland Police Department recognizes that education has been most effective in gaining understanding and support from the community. The Citizen Police Academy offers citizens insights into how police officers perform their duties and how the department serves the community.

Course instruction consists of one two-hour class held each week for 10 weeks. Certified police officers, supervisors and civilian instructors with particular expertise

will conduct each topic. Class sizes are limited. All classes are free.

The spring session will be held **February 26 through April 28**, 6 to 8 p.m., at Sabater Elementary School, 301 Southeast Boulevard, Vineland.

Interested citizens, 17 years of age or older, who resides in the city of Vineland, is encouraged to attend.

For more information, contact Officer Joseph Pagano at 856-691-4111, ext. 4059.

Bayshore Recovery Plan To Be Assessed

On **Tuesday, March 3**, the Bayshore Communities Recovery Committee will present a full assessment of the ambitious, 26-project Recovery Plan introduced in the winter of 2014.

The event will be held at Cumberland County College in the Luciano Conference Center from 5:30 to 9 p.m. and will include presentation from Bayshore Center at Bivalve, the American Littoral Society, the Partnership for the Delaware Estuary, the International Economic Development Council and the New Jersey Department of Community Affairs. Local, state and federal legislative leaders have also been invited to attend and outline the work they are doing on behalf of the Bayshore region.

The Bayshore Communities Recovery Plan can be found online at: <http://discoverdelawarebay.org/cumberland-county-delaware-bayshore-recovery-plan/>

The event is free of charge and is open to the public. Attendees are strongly encouraged to RSVP with Bayshore Center at Bivalve and can do so by emailing Recovery Committee secretary Phillip Tomlinson at ptomlinson@bayshorecenter.org or by calling 856.785.2060 ext. 113.

The Bayshore Communities Recovery Committee is a coalition which comprises federal, state, county and local governments, non-profit organizations and other Bayshore region stakeholders. The committee was formed in the summer of 2013 at the behest of the Federal Emergency Management Agency in response to the damage inflicted on the region by Superstorm Sandy.

The group's mission was to formulate and implement a comprehensive recovery plan that would address not only the immediate effects of the storm, but also work to build resiliency and sustainability in the areas of shoreline protection, infrastructure, economic development and intergovernmental relations.

In January of 2014 the Recovery Committee completed its planning process and adopted the Bayshore Communities Recovery Plan, which outlines 26 specific projects across each of the four sectors, and that was introduced to the public in February of that year.

Implementation of the plan has been a steady process involving the work of the original entities engaged in the planning process as well as a range of partners from the federal, state, county and local govern-



MAIN PHARMACY

856-692-MAIN

856.692.6246

80 S. Main Rd Vineland

Al otro lado frente a WaWa

Fast Personal Service
Free Delivery
Mon-Fri 9am-7pm
Sat 9am-1pm

Servicio Rápido y Amable
Entrega Gratuita a Domicilio
Lunes a Viernes 9am-7pm
Sábado 9am-1pm

Se Habla Español

Una farmacia a la manera tradicional, como antes



Dr. Lilliam Spieker
Pharmacist/Owner

J&D FURNITURE

986 S. Delsea Dr. Vineland, NJ (856) 692-7525

HOURS: Mon-Wed 10-6 • Thur-Fri 10-9 • Sat 10-6 • Sun 11-5

www.jdfurniturenj.com 3.5% Sales Tax

Instant Approval

- No Credit Required • Fast Approval
- Generous Approval Amounts
- Take It Home Today • Low Payments
- Flexible Payment Schedule

Mattresses Starting At **\$99⁹⁹**

UP TO 80% Off

RECLINERS



Starting At **\$189⁹⁹**

BUNKBEDS



FREE Layaway (Not on Final Sales)

Starting At **\$169⁹⁹**

7 PIECE LIVING ROOM

Package Includes: Sofa, Loveseat, Cocktail Table, 2 End Tables, 2 Lamps



Available in multiple colors

Starting At **\$769⁹⁹**

ANNUAL INCOMETAX BLOWOUT SPECIAL

TV STANDS



Starting At **\$109⁹⁹**

Also available with fireplace insert

TABLE & 4 CHAIRS



Starting At **\$199⁹⁹**

3 PIECE BEDROOM

Includes: Dresser, Mirror, Headboard

Available in Black/White



Starting At **\$399⁹⁹**

SECTIONALS



Starting At **\$599⁹⁹**

Se Habla Español

We Beat Any Price!

3.5% Sales Tax

INCOMETAX BLOWOUT

Serta KING KOIL Acme ASHLEY COASTER

ments, state colleges and universities, and environmental commissions and other non-profit and for-profit organizations.

Jamie Kelley and Relay For Life Team Up for May Concert

The American Cancer Society Relay for Life Cumberland County and the Jamie Kelley Live in Concert Show will be teaming up this May in order to fight cancer and help find a cure. A percentage of the proceeds from ticket sales will be donated to the local Relay for Life organization here in Cumberland County.

This will be the fourth time that Jamie Kelley has brought his show to our area. Opening the show will be Sonny Averona Jr. and Johnny Bones with their salute to Dean Martin and Jerry Lewis. Jamie Kelley accompanied by his Heart and Soul Band will perform his original songs and other standards from the '50s right on up to now.

The show will take place on May 16 at the Guaracini Fine and Performing Arts Center, Cumberland County College. Showtime is 7:30 p.m. and tickets are \$30. Tickets are available through the Jamie Kelley Fan Club by calling 856-265-1163. Tickets will be sold at the theater box office on show night.



Walk N Roll To Bring Awareness to Lung Cancer

On **Saturday, April 4**, at Parvin State Park, Pittsgrove, the Every Breath Counts Foundation is organizing the Walk 'N Roll 5K For Lung Cancer Awareness in memory of Ron Fooks, Sr.

On Thanksgiving morning 2013, Ron Fooks, Sr. lost his three-year battle with lung cancer. Now his family is carrying on the fight by raising money for cancer research with the first annual Walk 'N Roll 5K Walk for Lung Cancer Awareness.

Registration is 8:30 a.m. to 9:45 a.m. Opening Ceremony is 9:45 a.m. to 10 a.m. The walk is 10 a.m. to noon. Adults pay \$25, kids under 10 pay \$15. All participants receive a Walk 'N Roll t-shirt. There will be great prizes, it's dog-friendly, and all proceeds go to this great cause.

To register or make a donation, visit: www.active.com. For more information, e-mail WalkAndRoll4Cancer@gmail.com.

Time To Sign-Up for CSP

Time is running out for farmers and ranchers that want to participate in the Conservation Stewardship Program (CSP) this year. February 27th is the deadline for the 2015 round. Producers should visit their local NRCS office before that date to initiate the application process.

The CSP rewards farmers, ranchers, and

foresters for maintaining existing conservation practices and for adopting additional practices on cropland, grassland, non-industrial private forestland and tribal lands. The program pays producers for fostering clean water, better soil management, improved habitat, and other natural resource benefits.

Renewal applications must be received by March 31, 2015 to ensure a seamless transition into their next contract without a lapse in payments. Renewal contracts do not compete with new applicants.

Potential applicants can call 402-687-2100 or email Traci Bruckner at tracib@cfra.org for assistance from Center staff with program rules. ☞

Churches to Host Inaugural Tractor Blessing Service, Show

On Sunday, March 15 from 8 a.m. to 3 p.m. the Groves Churches, comprised of Union and Willow Grove United Methodist churches, will host their inaugural Tractor Blessing. This is a public, all-ages, family-friendly, free event to bless famers, gardeners, landscapers and their families alongside their trusty steeds—either antique or modern. The Tractor Blessing will be held at the Union Grove Campus, known locally as "The Little, White Church on the Hill," at 488 Almond Road, Pittsgrove, NJ.

"Winter can be long and harsh, so we invite farmers, gardeners, and landscapers to get out their tractors or vehicles to prepare

for the upcoming season with a blessing," invited Union Grove Lay Leader Melissa Hahn-Davis. "Our Tractor Blessing is the best way to get the farm and garden implements in gear! Drive 'em, tow 'em, or hitch 'em right up to our church in the country!"

This event features a public tractor/implement exhibit as well as a special, agriculture theme service that Pastor Ed Walters will lead inside the church at 10:30 a.m.

To RSVP your vehicle for the show, call or text Melissa Hahn-Davis at 610-207-2429 by Sunday, March 1. If inclement weather, the event will be held the following week on March 22 at the same time and location. Dress casual and warm. ☞

COMMUNITY BANKING PLUS

better for your
Business

The series of bank mergers in our area has created large financial institutions that make decisions outside of our community and senior bank managers who don't understand (or can't respond to) your uniquely local needs.

The better option? Century Savings Bank.
It simply adds up!

Peter Bertram

Senior Vice President, Lending

LOCAL PEOPLE + LOCAL DECISIONS = LOCAL BENEFIT

Century remains steadfast as the community's bank; a bank where you can still enjoy old-fashioned benefits – like local decision-making, low fees, and personalized service from a friendly, knowledgeable staff with years of local lending experience – all without sacrificing the convenient banking products associated with today's high-tech marketplace.

Contact Peter at 856-690-9100 or PBertram@centurysb.com
to discuss how Century can benefit your business.



MEMBER
FDIC

centurysb.com

CENTURY
SAVINGS BANK
— Since 1865 —



Heating & Cooling
Your Home

SINCE 1982

**FUEL OIL &
KEROSENE**

CALL FOR PRICES

Bondy
Oil Inc.

PO Box 645 West Blvd. Newfield, NJ 08344
(856) 697-4777

Obituaries & Memorials

Elaine M. Skvarcek, 94 of Vineland, passed away peacefully in her sleep on January 27, at Genesis Millville Center. Elaine was born in Atlantic City and was a long time Sears of Vineland employee. She was also an accomplished seamstress who made clothes for her children and later, created beautiful embroidery and counted cross-stitch pieces. Her greatest joys were spending time with family and friends, going out to eat and making baked goods that she happily shared with everyone. An Army wife, she traveled widely even living in

the Philippines before and after WW2.

Steven Moritz, Sr., of Winter Garden, FL and formerly of Vineland, NJ, died suddenly while visiting in Newfield, NJ on January 28, at age 47. Born in Vineland, Steve worked for the family owned and operated business, M & S Food Processing Equipment, Vineland. He also was a volunteer firefighter from the age of 15 at the Forest Grove Fire Department. He was also a member of the Franklinville Fire Department and Ambulance Squad. He enjoyed fun times with loved ones, fishing, hunting, and cooking. He was a certified scuba diver.

Rollo M. Jackson, 82, of Minotola, passed away peacefully on January 28, at Inspira Medical Center. He was born in Danville, VA to the late James Jackson Sr and Alphonse Welford. Rollo was a resident of West Group Home with Zion Inc.

Margaret "Trip" Triboletti, 57, passed away peacefully, January 28, following a long battle with cancer. Following high school, Margaret enlisted in the U.S. Air Force, where she served for four years, and then transferred to the NJ Air National Guard of which she was still active. She was initially a part of the 177th Fighter Wing in Pomona, later transferring to the 108th at McGuire. She was an Iraq war veteran, serving in Operation Enduring Freedom. She also

11th Year Since Your Passing

For Bobby Halpin

December 15, 1979–February 20, 2004

As long as my heart beats,
You will always be safe
You will never be troubled;
You will never be scared
You will always be remembered & loved
You will always be alive
Every tear that has been shed for you,
has been a prayer for you
Every time I have been overwhelmed
with sadness and grief.
The memory of you, brings me back
to my feet.
From your first breath and to your
last, I was there with you
So grateful to be there with you
As your mother, I promise to never
give up, to never give in, to never for-
get that you were once and always will
be a part of me, not apart from me.

Written by Margie Halpin-Bertrand



As long as my heart
beats, To forever
and back again,
Fiercely loved and
never forgotten
Love Always, Mom,
Dad & Family

TAX SEASON



Sectional

Starting at
\$599



Bedroom Set

Dresser, Mirror, Queen Bed, Night Stand.
Available in King Size Bed

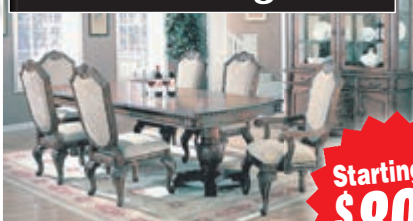
Starting at
\$799

Recliners
Huge Inventory



Starting at
\$188

Formal Dining Room



Table, 4 chairs, 2 arm chairs

Starting at
\$898

SPECIAL



**Solid Honey Pine
Bunk Beds**

Starting at
\$188



Living Room Set

8-piece Living Room Set Includes
coffee table, end tables & 2 lamps

Starting at
\$799



Bedroom Set

Dresser, Mirror, Queen Bed, Night Stand.
Available in Black & King Size Bed

Starting at
\$699



B&H FURNITURE OUTLET

Open 7 Days A Week
Mon.–Sat. 9–8 • Sun. 9–7

22 W. Landis Ave. • Vineland
856-507-8882

Visit us at our 2nd location: 6531 Crescent Blvd. • Pennsauken • 856-330-4325

Free Layaway • Financing Available • 6 Months No Interest

was activated at times, when her country needed her. Following the terrorist attacks on 9/11, she was activated to Operation Noble Eagle. She was also activated on border patrol in Arizona where they built the wall to prevent illegal immigration. Trip worked for the Atlantic City Electric Company for 27 years, working as a meter reader, then as a utility meter person. She was a hard worker, with an excellent work ethic.

Rudolph "Rudy" Rossi Sr., 89, passed away on January 28, surrounded by his loving family. He attended Vineland High but left school to join the US Navy where he served for four years before earning an Honorable Discharge. He belonged to DESA (Destroyer Escort Sailors Association) where he and his wife Alice attended many reunions over the years across the country. In 1964 he started the Rossi Tile Company, operating it for over 40 years along with his son and grandchildren. He coached Little League Baseball in Buena Borough, served in the Recreation Commission in Buena, was a member of the American Legion Post #270 in Minotola where he served as an Adjutant and Service Officer for over 35 years. He was co-founder and member of the Greater Vineland Baseball Hall of Fame and also an inductee in 2000. Rudy played baseball in Vineland and Buena. He pitched for Melini Goodyear and the Vineland Lumberjacks and played softball in Buena for the American Legion. Rudy was named "Man of the Year" of Buena Borough in 2011. He enjoyed outings with Marcella Franzoi and lunch with "the boys" from the Greater Vineland Baseball Hall of Fame group.

Eleanor S. Vertolli (nee Barker), 93, of Vineland, passed away peacefully on January 29, at home, after an extended illness. Mrs. Vertolli was born and

raised in Vineland where she remained a lifelong city resident. Before retiring in 1972, she assisted her husband in the building and operation of the family business, Vertolli Pontiac, a busy auto dealership on Delsea Drive in Vineland. Eleanor put her heart and talent into the business for many years. Later in life, Eleanor and Joe enjoyed wintering in Estero, FL, for many years until his passing. She continued her trips to warmer weather until just a few years ago. Eleanor enjoyed cooking and baking, spending time with her grandchildren, watching and caring for the birds in her yard, and sitting on her porch with family and friends.

Mobile Tax Service
651 E. Landis Ave. Ste. 2, Vineland NJ 08360

FREE Gift and TV Entry
with tax preparation

Celebrating 15 Years of Serving the Community

- **FREE** Electronic Filing with Tax Preparations
- **FREE** State with Federal Tax Preparations
- Personal & Small Business Tax Preparations
- Direct Deposits & No Up Front Fees Available
- Notary Public Service Available

Se Habla Español

Phone: 856-563-0400
www.lmtaxservice.com

40 YEARS OF SMILES

AFFORDABLE DENTURES & CROWNS®

\$575
Full Set Dentures
Economy

Extractions
Starting at
\$95

Crowns
Starting at
\$750

Starting at
\$1,695
Denture Stabilization
Implants
(Dentures Not Included)

• Same Day Service* • On-Site Lab • Financing Available

Affordable Dentures-Vineland, Michelle Aitken, DDS, P.A.
Michelle Lynn Aitken, DDS, General Dentist
60 W. Landis Ave., Suite A-2, Vineland, NJ 08360
Call For Appointment (856) 692-0735

<p>SAVE \$100 ON AFFORDABLE IMPLANTS Denture Stabilization Implants (fee range \$1,695-\$2,095)</p>	<p>SAVE \$75 PER DENTURE ON ULTRA Complete or Partial Denture (fee range \$1,145-\$2,075)</p>	<p>SAVE \$50 PER DENTURE ON PREMIUM Complete or Partial Denture (fee range \$940-\$1,645)</p>	<p>SAVE \$25 PER DENTURE ON CUSTOM Complete or Partial Denture (fee range \$675-\$1,095)</p>
--	--	--	---

Offers good only at Affordable Dentures-Vineland, Michelle Aitken, DDS, P.A. Coupon must be presented at time of initial payment and cannot be combined with any other coupons, discounts, package price, or prior order. Offer expires 04/30/15 and may change without notice.

AFFORDABLE DENTURES & CROWNS®
1-800-DENTURE
www.AffordableDentures.com

13202-6-V1.1

*Same-day service on Economy Dentures in most cases. call for details. Additional fees may be incurred depending on individual cases. X-ray required with Extraction. Full Mouth X-ray value is \$90. We accept Cash, Checks with ID, Visa, Mastercard, Discover and American Express as payment for our services. Except where noted, the individuals depicted are models and not actual patients. Fees effective through 11/20/15. Financing Available.

The Grapevine
CONNECTING YOU TO SOUTH JERSEY WEEKLY.

The Grapevine
907 N. Main Rd., Ste. 205, Vineland, NJ 08360
PHONE: 856-457-7815 • FAX: 856-457-7816
EMAIL: letters@grapevinenewspaper.com
WEB: www.grapevinenewspaper.com

The Grapevine is published on Wednesdays by Grapevine News Corp. Copyright © 2015. All rights reserved.

{ STAFF }

MIKE EPIFANIO Editor & Publisher
DEBORAH A. EIN Managing Editor
GAIL EPIFANIO Controllor
MARIE HALPIN-GALLO Advertising Executive
MICHELE LOW Advertising Executive
JESSICA RAMBO Advertising Coordinator
CHRISTOPHER L. TOLER Graphic Designer

STILL the Leader in Affordable Healthcare



**For over 15 years,
CDI has been your local leader in radiology services:**

STILL the Lowest Radiology Prices in Cumberland County
STILL the Best Technology with the region's most advanced
Wide Bore MRI, Low Dose CT Scanner, PET/CT and more
STILL the Most Experienced Radiologists



The Center for
Diagnostic Imaging

VINELAND
1450 E. Chestnut Ave. • Bldg 4, Suite A
856.794.1700
UPPER DEERFIELD
1119 Hwy 77, Carls Corner • Bldg 2, Suite C
(Across from WalMart)
856.453.1555



CenterForDiagnosticImaging.com



Shalendra Datta, M.D. NJ 1072553132 | Ernesto Go, M.D. NJ 1265489207 | Ajay Marjola, M.D. NJ 1072552911 | Steven Rothfarb, M.D. NJ 1285674358 | Satish Shah, M.D. NJ 1730128626
NJ State License 25MA04122300 | NJ State License 25MA02907100 | NJ State License 25MA0574100 | NJ State License 25MA03531300 | NJ State License 25MA03178300

Vintage Vineland { BY VINCE FARINACCIO }

Michener Visits

Pearl S. Buck was instrumental in bringing James Michener to Vineland.

The week before Pulitzer Prize winning author James A. Michener appeared in Vineland in May 1968, Nobel Prize winning-author Pearl S. Buck presided over a Washington, D.C. reception of the American Institute of Mental Studies (AIMS) that announced a \$5 million fundraising drive related to the Vineland event.

According to a *Times Journal* article, Buck, who spoke to those in attendance at the Sheraton Carlton Hotel, mentioned that the drive “marked the 80th anniversary of the Training School at the Vineland unit of AIMS, a world renowned, private, non-profit research and demonstration complex.” She explained that initial pledges were nearing \$1 million.

“From the beginnings of the programs of expansion of 1968,” Buck told those in attendance, “it is expected that the plan will include creation of pilot facilities on a worldwide basis to demonstrate the best which can be accomplished now and in the future to enhance knowledge and provide help in the various types of mental handicaps and mental retardation.” Buck’s daughter Carol was a student in the Vineland Training School at the time.

The article called AIMS “the corporate entity which identifies the world-renowned organization which specializes in the diagnosis, treatment, education and care of those who function at a mentally retarded level, the brain injured, the slow learner and the so-called ‘exceptional child.’ ” It also cited achievements made in Vineland such as adapting the Binet-Simon intelligence tests and establishing the Vineland Social Maturity Scale.

The *Times Journal* article mentions that the Washington reception was under the patronage of New Jersey Senators Clifford P. Case and Harrison A. Williams, who were joined that evening by fellow Senators Alan Bible of Nevada, Norris Cotton of New Hampshire, Jacob K. Javits of New York, Warren G. Magnuson of Washington and Robert F. Kennedy of New York. Members of the House of Representatives in attendance included New Jersey’s Charles W. Sandman and Frank Thompson, Jr.

On May 22, Buck was here in town in her capacity as chairman of the AIMS board. Joining her was her friend and fellow writer Michener who had agreed to help celebrate Vineland Day and address the New Jersey Federation of Women’s

Club members who toured the AIMS facilities and presented a check to the institution in the amount of \$3,600 for its ongoing research.

The Training School grounds were filled with tables to accommodate the luncheon festivities. Buck used the opportunity to announce that the institute would expand its research program to include both Rutgers and New York universities. She also explained that the \$5 million AIMS fundraising campaign was “preliminary money” and hoped the drive reached \$7 million over the next several years. According to the *Times Journal*, AIMS Director Walter Jacob “congratulated his board for its move to larger centers where medical and scientific men could increase research benefits.”

Michener’s address mirrored his best-selling books by focusing on foreign cultures. As the *Times Journal* reported, the author “cited six characteristics each from Japan and Spain, both cut off from the main stem and able to develop their own way, noting how other nations weathered radical and painful change. In scholarly fashion, he suggested comparisons with America.”

Michener credited Japan with a society that was “intelligently controlled,” a strength that he said allowed the country to defeat Russia in 1900. He called Spain’s feudal system “brilliantly organized” with rigorous behavior. According to the *Times Journal*, Michener singled out the Spanish nobility, the Hidalgo, as the “equivalent of the Samurai of Japan...the nonworking noblemen, the haughtiest on earth” and offered a remark that “We [Americans] wouldn’t tolerate ‘em ten minutes here.”

The author made clear his admiration for the Samurai and Hidalgo, “but hoped Americans would not copy their attitude of superiority.” He praised the U.S. for having something “no other nation comes close to equaling—sharing the costs.” He added that there is no such counterpart in Japan, Spain or India and that, while we can copy the systems of other countries, “we have something which will serve us better in the future.”

Michener’s appearance here on Vineland Day was a momentous occasion and one that seems to have been forgotten through the ensuing decades. It would be another eight years before another distinguished writer, Nobel Laureate Alexander Solzhenitsyn, would visit Cumberland County. 🍷

Now is the time to use your Income Tax Refund to Buy Your New Home!

Let

GATEWAY FUNDING
DIVERSIFIED MORTGAGE SERVICES, L.P.
guide you . . .

- Conventional
- FHA/VA
- USDA
- Construction Loans
- NJ 1st Time Home Buyers
- Loans with credit scores of 620 and above

CALL NOW

for Pre-Qualification on a Loan or for more information



GATEWAY FUNDING
DIVERSIFIED MORTGAGE SERVICES, L.P.

(856) 692-9494

“OPENING DOORS TO HOME OWNERSHIP”
1117 E. Landis Avenue, Vineland

The Original Office of Gateway Funding that has Served Cumberland County for 20 years.

Licensed by the NJ Department of Banking and Insurance
Gateway Funding Diversified Mortgage Services L.P. NMLS #355360



Wizardry/Orazi

Continued from cover

through 29, with performances at 2 p.m. Saturday and Sunday with a special Friday evening show at 7:30 p.m. on March 20. Tickets can be purchased online at <http://dechilrenstheatre.org>.

“Collaborating with Chris was a terrific experience,” said Donna Swajeski. “He totally embraced my vision and added some great touches to it. He is proficient in every style of music so it was fun to develop the characters further through their songs. When I first heard the Emerald City music, it was thrilling. The show has something for everyone musically—from a rock anthem to a humorous mambo between villains. Our show pays homage to the original *Wizard of Oz* and updates it without losing the classic feeling. I always wanted to hear more from Dorothy and characters like the Cowardly Lion. Now, with Chris’ help, these beloved characters come to life all over again.”

In addition to Orazi who is from Vineland, a number of other local artists contributed to the original soundtrack to be released in time for the show and available for sale during each performance. The artists include: Bugzy Boyer, guitar, lead and backing vocals (Absecon, NJ); Patti Balbo, lead and backing vocals (Absecon, NJ); Ariana Ballerini, lead and backing vocals (Yardley, PA); Nick Pontelli, lead and backing vocals (Wilmington, DE); Ariana Scalfo, lead and backing vocals (Ocean City, NJ); Henry Scalfo, guitar, backing vocals (Vineland). The music was recorded, mixed and mastered by Orazi and Al Pellegrini (Minotola, NJ), at C.A.S. Music Productions in Vineland. The Assistant Engineer on the project was Mike Surrency (Bridgeton, NJ).

The Delaware Children’s Theatre has been entertaining audiences of all ages for over 40 seasons. In that time, it has grown to meet the needs of the community it serves. Its mission and goals have remained constant—to enrich our children’s cultural life, to help young talent find its way to the stage, to continue a tradition of affordable quality theater, to entertain families with exceptional theatrical experiences, and to preserve our Historic Theatre House for generations to come.

Orazi is an award-winning composer, producer and founder of C.A.S. Music Productions. Established in 1984, the company provides audio-visual production for radio, television, film, and web-based media. It owns and operates an on-site, custom music and sound production studio. The C.A.S. technical design, programming and installation team is now a leading provider of audio-visual solutions for commercial and residential environments. To find out more, visit casmusic.com. 🎵



Nick Pontelli, who also plays the Nome King in the actual production, is pictured at C.A.S. Music Productions studio in Vineland recording songs for the soundtrack.

WASHERS STARTING AT ONLY \$299



Amana Super Capacity Washer

- 3.6 cu. ft. Capacity • Load Size Options
- 9 Wash Cycles • Cycle Status Bar
- 700 RPM Max Spin Speed
- Porcelain Wash Basket
- Advanced Suspension System
- Automatic Temperature Control
- Casual Cycle • Delicate Cycle • Drain & Spin Cycle
- Normal Wash Cycle • Rinse & Spin Cycle

\$299

#NTW4651BQ

appliances plus
AUDIO VIDEO
2155 S. Delsea Drive
Vineland • 856-692-1544

Store Hours
Monday, Thursday, Friday 9am - 8pm
Tuesday, Wednesday 9am - 6pm
Saturday 9am - 5:30pm, Closed Sunday
www.appliancesplusvideo.com

3.5%
NJ Sales Tax

Ask for HEALTHSOUTH VINELAND



A stroke can change your life in a matter of seconds.

If it does, you don't have to deal with it alone. Our program is stroke certified for the best possible care leading to a positive outcome. We're close to home, for the added convenience of being near loved ones. And our specially trained physicians*, nurses and therapists use the latest advances in technology to help you return to an active lifestyle.

For a higher level of care in stroke rehabilitation, choose HealthSouth Rehabilitation Hospital of Vineland.



The Joint Commission
Disease-Specific Care Certification
in Brain Injury Rehabilitation and
Stroke Rehabilitation

A Higher Level of Care®

HEALTHSOUTH
Rehabilitation Hospital of Vineland

1237 West Sherman Avenue • Vineland, NJ 08360
856 696-7100

healthsouthvineland.com

* The hospital provides access to independent physicians.

simple is beautiful

\$6,500 in 0% Financing

To UPGRADE Your Natural Gas equipment

Act Now! Funds are Limited.

SJGsimple.com

Toll Free 855.678.5860

Program expires June 30, 2015 or when funds are exhausted.

Financing available for business owners, too.



MARCH 12, 13, AND 14

Legally Blonde the Musical. Vineland High School South auditorium, 2880 E. Chestnut Ave., Vineland. Doors open at 6 p.m. all three nights, curtain rises at 7 p.m. Reserved seats for all shows are \$15 and general admission is \$10. Call 856-692-9231 for tickets. The Vineland High School "Cap 'n' Dagger" club will perform the musical. Producers for the show are Melanie Anderson and Hank Ehrlich. Anderson is also director of the play while Ehrlich is stage manager/director. Eileen Bosco is musical director, and Natalie Quackenbush is choreographer. Sets are by Stage Krew Productions.

The cast includes: Alexandra Durham as Elle Woods; Megan Beres as Paulette Bonafonte; Angela Doulis as Vivienne Kensington; Jaclyn Kell as Brooke Wyndham/Shandi; Thomas Burgess as Emmett Forrest; Jacob Kell as Warner Huntington III; Garrett Loper as Professor Callahan; Sean Scanlon as Kyle/Harvard Student; Mikaela Guzman as Enid Hoops; Mia Massaro as Margot; Isabel Vega as Serena; Rebecca Pellerano as Pilar; Caroline Madonna as Kate/Chutney Harvard Student; Lisandra Ruiz as Gabby/Stenographer/Brooke Dancer; Victoria Santiago as Lelaini/Brooke Dancer; Sydney Denelsbeck as Kristine/Brooke Dancer; Cassidy Campanella as Cece/Brooke Dancer; Rebecca McDonald as Veronica/Brooke Dancer; Gracie Galan as Delta Nu/Brooke Dancer; Tyler Bermudez as Delta Nu/Brooke Dancer; Katie Perry as Judge/Courtney/Harvard Student; Kaylee Ruiz as Saleswoman/Harvard Student; Jocelyn Cortez as Harvard Student; Nerys Muller as Mom/Whitney/Harvard Student; Lauren DeWoody as Harvard Student/District Attorney; Sarah Crowell as Harvard Student; Mariella Vasquez as Harvard Student; Breanna Suppi, Ensemble; Juliana Magazzu, Ensemble; Seyma Akisler, Ensemble; Gina Ore, Ensemble; Aaron Rivera as Grandmaster Chad/Kiki/Harvard Student; Victor Ramos as Harvard Student; Joel Vasquez as Harvard Student; Joseph Santos as Winthrop/Harvard Student; Tim Satterfield as Aaron/Dad/Harvard Student; Vinny Pontari as Carlos/Harvard Student; Nick Perna as Pforzheimer/Dewey/Harvard Student; Kevin Lopez as Sundeep Padamadan/Nikos; and Gavin Loper as Lowell/Harvard Student.

LIFE IS MORE EXCITING WITH BLADE-FREE LASIK!

Take the fear out of LASIK with this new technology! Ask Dr. Tyson if this is right for you... schedule a **FREE LASIK** consultation today!



0% Financing - 12 or 24 Months

Eye Associates realizes you want quality care at an affordable price!



Sydney L. Tyson, MD, MPH

OUR OTHER LOCATIONS: Cherry Hill (856) 482-5797
Blackwood (856) 227-6262 • Hammonton (609) 567-2355
Mays Landing (609) 909-0700 • Toll Free 1-800-922-1766

www.sjeyeassociates.com

856-691-8188

251 S. Lincoln Ave., Vineland, NJ 08361

FEBRUARY 25 THROUGH MARCH 3

Nightlife at Bennigan's. 2196 W. Landis Ave., Vineland, 205-0010. Karaoke Thursdays with Bob Morgan, 9 p.m.-close. Live music Fridays 9 p.m.-midnight. All Sports Packages: Drink specials seasonally for MLB Extra Innings, NBA League Pass, NHL Center Ice, and NFL Sunday Ticket. Call for RSVP and details.

Nightlife at MVP Sports. 408 Wheat Rd., Vineland. 856-697-9825. Food and drink specials all week. Wed.: Pool tournament, cash prizes. Thurs.: DJ Real Deal. Fri. Ladies Night 9 p.m.

Nightlife at Tre Bellezze. 363 Wheat Rd., Vineland. Wed: Ladies Night (karaoke and free pool. Thurs: Tony Mascara 7-10 p.m. Fri.: DJ Joe Gorgo from 92.1 WVLT 6-10 p.m. Sat.: Tony Mascara 7-10 p.m.

Nightlife at The Centerton. Ten22, The Centerton Country Club & Event Center, 1022 Almond Rd., Pittsgrove. Tues.: Trivia. Wed.: Country Night, \$5. Every third Thurs.: Comedy Night, \$5. Flashback Fridays with DJ Scott. Sat.: DJ Moose's Top 40 Songs.

Nightlife at The Cosmopolitan. 3513 S. Delsea Dr., Vineland, 765-5977. Tues.: Karaoke with KAO Productionz featuring Kerbie A. (9 p.m.-1 a.m.). Wed.: Salsa Night, Latin-inspired dance party. Thurs.: Singles Night with DJ Slick Rick. Fri. and Sat.: Top 40 Dance Party with DJ Tony Morris.

EVERY THURSDAY Jazz Duos. Annata Wine Bar, Bellevue Ave., Hammonton, 609-704-9797. Live Jazz featuring area's best jazz duos. 6:30 - 9:30 p.m. No cover. RSVP recommended.

FEBRUARY 26 THROUGH MARCH 1

Nightlife at Old Oar House. Old Oar House Irish Pub. 123 N. High St., Millville, 293-1200. Wed.: Karaoke. Fri.: Kids Don't Bounce 9 p.m. Sat.: Non-Domestics 9 p.m.

Nightlife at Ramada. Harry's Pub at Ramada, W. Landis Ave. and Rt. 55, Vineland, 696-3800. Wed.: Ladies Night, 1/2 price appetizers all night. Happy Hour Mon.-Sat, 4-6 p.m. \$1 off alcoholic drinks. Wed.-Sat., live entertainment.

Nightlife at Bojo's Ale House. 222 N. High St., Millville, 327-8011. Tues.: Bike Night with live entertainment. Wed.: Nick@Nite Open Mic 7 p.m. Fri.: Live music 9 p.m. Daily drink and food specials.

EVERY SATURDAY

Back in the Day Dance Party. Villa Fazzolari, 821 Harding Hwy. (Rt. 40), Buena. 856-697-7101. 7 p.m.-midnight. Five hours nonstop dance music from 1970s and '80s.

WEDNESDAY, FEBRUARY 25

Travis Tritt. Levoy Theatre, 126-130 N. High St., Millville. 8 p.m. The Georgian incorporated lifelong influences in Southern Rock, blues and gospel into his country during a honky-tonk apprenticeship that led him to Warner Bros. His 1990 debut Country Club and its succession of hits put him in the vanguard of the genre's early '90s boom. He has amassed more than 25 million in career album sales, two Grammys, three CMA Awards and a devoted fan base that fills venues coast-to-coast. Tickets \$35-\$60, Day of Show (+\$5), www.levoy.net.

Cumberland County College Wind Symphony Showcase. Luciano Theatre, Frank Guaracini, Jr. Fine and Performing Arts Center, Sherman Ave. and College Dr., Vineland. 7:30 p.m. An evening of Chamber Music for Winds and Wind Symphony repertoire. The 40+ members of the Wind Symphony will perform a wide range of chamber music repertoire in duo, trio, quartet, and quintet modes. Likewise, the Wind Symphony will present a repertoire of descriptive music, incorporating classic, and contemporary, wind band repertoire. Admission is free, but tickets are required. Call the Box Office at 856-692-8499 for more information and to reserve tickets. Box Office hours are: 10 a.m.-2 p.m. Tuesday, Thursday and Friday; 4 p.m.-7 p.m. Wednesday. Tickets may also be ordered online at www.click4tix.com/gpac

FRIDAY, FEBRUARY 27

Sofa Kings. Bogart's Bookstore. 210 N. High St., Millville. Free. Live music 7 p.m.

Breath of Life Tour: Code Blue Concert.Calvary Chapel, 4630 Mays Landing Rd., Vineland. Doors open 6:30 p.m., show starts 7 p.m.. Live music by Never Forsaken, Kristi Nestel, and Dana Isles & Facedown. Dr. Rob Weinstein, Pastor. Help to provide warming centers for community homeless. 1-855-818-3810

SATURDAY, FEBRUARY 28

Christopher Lax. Bogart's Bookstore. 210 N. High St., Millville. 2 p.m. Free. Live guitar music.

Berenstain Bears. Levoy Theatre, 126-130 N. High St., Millville. 1 and 4 p.m. Popular beyond the world of children's books. There have been four Berenstain Bears plays and stage musicals. Tickets \$15-\$25, Day of Show (+\$5), www.levoy.net.

SUNDAY, MARCH 1

The Very Hungry Caterpillar. Luciano Theatre of the Guaracini Performing Arts



Center, Sherman Ave. and College Dr., Vineland. 3 p.m. The Mermaid Theatre of Nova Scotia presents this and two other beloved stories by Eric Carle, retold on stage through the magic of black light and fanciful puppets. Tickets: All ages: \$7; Subscribers \$5.

Book Discussion. Bogart's Bookstore. 210 N. High St., Millville. 2 p.m. Free. *Inherent Vice*, by Thomas Pynchon.

TUESDAY, MARCH 3

If You Give a Pig a Pancake. Vineland Public Library, 1058 E. Landis Ave., Vineland. 6-7 p.m. New Jersey Theatre Alliance presents Centenary Stage Company's production as part of the New Jersey Theatre Alliance's Stages Festival, the state's largest annual theatre festival that provides discounted and free theatre performances, workshops and, events for all ages throughout the month of March. This event will be free. Registration is requested for this program, as space is limited. Children ages 8 and younger must be accompanied by an adult. For more information, or to make a reservation, call 856-794-4244, ext. 4246. To receive a full schedule of events for The Stages Festival please visit www.stagesfestival.org Learn more about library programs and services from the library's web page at www.vinelandlibrary.org

SUNDAY, MARCH 8

Down Jersey: Celtic Celebration. Luciano Theatre of the Guaracini Performing Arts Center, Sherman Ave. and College Dr., Vineland. The college's annual celebration of Irish Music and Culture includes Cumberland Highlanders pipers and drummers under the direction of piper George Cowan; the Irish Band "Sligo Road," featuring Tom Brett; Philadelphia Irish musician Jimmie Scanlin and local favorites, "The Towheads," Down Jersey host Jim Albertson will join the Towheads for a special presentation. 3 p.m. Tickets: All ages \$10.



NOT ALL DRUG ADDICTS ABUSE ILLEGAL DRUGS

Prevent prescription drug abuse. Dispose of your prescription drugs wisely. Visit the website below for a disposal location near you.

www.swccoalitions.org/disposal

SCRATCH
Salem-Cumberland Regional
Action Toward Community Health

THE SOUTHWEST COUNCIL, INC.
www.southwestcouncil.org

CCHCC
Cumberland County Healthy
Communities Coalition

ONLY \$1 DOWN

100 Days* FREE

With 18 Month Contract exp. 3/31/15

All Classes Included: Spin, Zumba, Yoga and so much more!

the Firm
FOR HEALTH & FITNESS

20,000 sq. Ft.
of Motivation, Fitness & Strength

Women's Only Room

Indoor Racquetball & Basketball Courts

UNDER NEW MANAGEMENT

OPEN 7 DAYS A WEEK

112 Wheat Rd., Buena • 856-697-3636

VanMeter Tax Service

856-794-8183

Biggest and Fastest Refunds Allowed by Law

- 7–21 day Direct Deposit program
- **FREE** State return prepared
- No appointment needed
- **No money upfront** with most programs



NEW Address: 46 N West Ave, Vineland, NJ
Between Plum St and Railroad Track
(located in the Rental City Building)

VanMeter Tax Service is an authorized IRS E-File that offers the largest and fastest tax refunds allowed by the IRS. We have many locations to serve you with friendly and confidential service. No appointment needed! Call us at 1-800-246-8299 (or locally at 856-794-8183) or email us at info@vanmetertaxservice.com



In Our Schools

Ellison Spreads the Love!



On February 12, The Ellison School's Interact Club delivered Valentines to The Maurice House. Residents were excited to receive the handmade, personalized cards and chocolate! After cards were delivered, the students played BINGO with some of the residents. Everyone had a great time celebrating an early Valentine's Day. Pictured is 5th grade student Maddie DeLong.

Automotive Students Place Second in Competiton



Two students in the Automotive Technology Program at Vineland High School placed second overall in the Universal Technical Institute "Top Tech Challenge" at its campus in Exton, PA.

Daniel Sakhan and Ariel Mendez, both seniors, received vouchers for \$1,000 in Snap-On tools. Their instructor, Louis Bramante, was awarded a tool voucher worth \$1,500, which he is donating to the program, "so that current and future students benefit from the success of their fellow students." A second VHS team, David Sakhan and Christopher Spinelli, also competed in the program.



The competition is open to automotive programs from secondary high schools and Association for Career and Technical Education (CTE) Training Centers from New Jersey, Pennsylvania and Delaware, according to Bramante.

"The students are required to take an ASE (Automotive Service Excellence) general knowledge test and then compete in hands-on diagnostic modules as well as tool and automotive component identification work stations," said Bramante.

Bramante said the teams were up early, braving inclement weather for the drive to Exton in time for contest's 8 a.m. start.

The teams actually arrived a half hour early, reviewing material on the tests and working out the nervous jitters, according to Bramante.

"The competition started with written testing to establish their knowledge of automotive diagnostic procedures, failure scenarios and basic automotive systems and components," said Bramante. "After that, they were required to diagnose and troubleshoot an electrical lighting circuit, use a hand-held scan tool to troubleshoot a fault code, and identify both automotive components and tools specific to the diagnosis and repair of automobiles."

From left, David Sakhan, Daniel Sakhan, Louis Bramante, VHS Automotive Instructor, Jeff Muecke, VP of Field Admissions, Universal Technical Institute, Scottsdale, AZ, Ariel Mendez and Christopher Spinelli at the awards ceremony.

From left, Daniel Sakhan, Ariel Mendez, David Sakhan and Christopher Spinelli.

St. Augustine President's List Addendum

In last week's issue of *The Grapevine*, St. Augustine Prep announced academic honors (President's List and Dean's List) for students living in Cumberland County and surrounding areas the first semester of the 2014-2015 academic year. A couple of names were omitted from the President's list: Freshmen Francis Vincent Bergamo, of Vineland and William Anthony Martini of Vineland. The President's List recognizes those students who earned a weighted year-to-date average of 95 or better during the first semester.



1026 Gheysens Ave., Vineland

856-692-8146

www.CharliesLiquor.com

Sale prices valid 2/25 – 3/3/2015



CHARLIE'S SPECIAL

Bud Ice 99¢

BEER

Bud & Bud Light 24pk 12oz can	17.99
Modelo 24pk suitcase can	20.99
Coors Light 30pk 12oz can	20.99
Coronita 24pk 7oz NR	18.99
Corona 24pk 12oz loose	27.99

VODKA

1.75L 750mL

UV 80 proof & flavor	7.99
New Amsterdam 80 proof	9.99
New Amsterdam flavors	9.99
Exclusiv	8.99
Pinnacle 80 proof & flavors	11.99
Absolut 80 proof	19.09
Ciroc 80 proof & flavors	29.99
Svedka 80 proof	11.99
Grey Goose 80 proof	29.99

RUM

1.75L 750mL

Bacardi Silver Gold & Select	14.99
Captain Morgan	16.99
Captain Morgan 1671	13.99

Ron Barcello	14.99
Parrot Bay	17.09

WINTER CLEARANCE

750mL

Calumet Bourbon	37.99
Tullamore Dee Irish Whiskey	
Limited Edition	54.99
Jim Beam Red Stag Spiced (1 L)	13.99
Averna Cream Liqueur	16.99
Limoncello Cream Liqueur	7.99
Hangar 1 Vodka	27.99

	750mL	1.5L
Hennesey Cognac	\$30.09	\$59.09
Carolans Irish Cream		12.99
Jameson Irish Whiskey		29.99
Bailey's Irish Cream	21.99	40.99
Fireball Cinnamon Whiskey	16.99	29.99

WINE

750mL 1.5L

Barefoot (all flavors)	\$5.99
Sutter Home	4.99
Periquita Portugal Wine	4.99

While supplies last. No rain check or substitutes. All prices do not include state sales tax.

\$ PRIZEWEEK PUZZLE \$

**This week's
jackpot: \$525**

Jackpot increases by \$25 each week if no winning entry is received!

ACROSS:

5. Wanting to ensure husband doesn't embarrass himself, thoughtful wife suggests leaving party when inebriated spouse begins to _.
6. Told that there's no _ for him, a drug addict may well despair.
7. It would be unusual for someone to feel fine after a rugged _.
8. Girlfriend is surprised by a _ on the door and tells boyfriend to deal with it.
9. An important participant in a professional hockey game.
10. Because _ adopts a pleasant manner, he's likely to be more successful with his contacts.
12. Sometimes it's prudent to think twice before raising a _.
14. Employee says that staff member who does a lot of overtime work might _ himself.
15. News commentator claims that only through weakened political party's determined effort could it have _ its power.
16. No one likes to be in _ if at all avoidable.

DOWN:

1. Grandfather remembers supervising his younger siblings when he was 10 and how comic _ were a big part of their lives.
2. Seeing mother in kitchen preparing delicious beef, son knows it will soon be _, then eagerly eaten by his family.
3. Worn on one's foot for protection.
4. It could be considered an example of your caring nature if your friend is the reason you are _.
5. Being witty _, people are frequently seen reacting with chuckles.
9. When alarm clock rings before dawn, cowboy curses the fact he has to _ so early to complete cattle drive.
11. A man who has a wonderful _ is fortunate indeed.
13. Book goes into disturbing detail about volcano's eruption and local residents taking _.
15. When housemate returns and sees _ left in disuse on floor, she immediately says to partner, "Hang it up."

1. Solve the puzzle just as you would in any crossword puzzle. Choose from each printed clue the word that best fits the definition. Write the answers in the blank space provided in each puzzle until all spaces have been filled in.

2. The number of entries that can be submitted each week from any single household (mailing address) is limited to ten (10). No facsimiles, photocopies or reproductions will be accepted. Only original newspaper entry forms will be accepted.

3. Anyone is eligible to enter except employees/directors of South Jersey Federal Credit Union (SJFCU) and The Grapevine and their immediate families. Prizeweek Puzzle jackpot winners and members of their household (mailing address) are also ineligible to win future jackpots.

4. A basic prize of \$50.00 will be awarded to the winner(s) of each weekly Prizeweek Puzzle. In the case of multiple winners, the prize money will be shared. If no correct puzzle entries are received, \$25.00 will be added the following

week. Winners agree to permit use of their names and photos by SJFCU and/or The Grapevine.

5. Entries can be mailed to South Jersey Federal Credit Union, Attn: Prizeweek Puzzle, PO Box 5429, Deptford, NJ 08096, or dropped off 24 hours a day, 7 days a week in the vestibule of SJFCU, 106 W. Landis Avenue, Vineland. Mailed entries must be received by SJFCU no later than 10 am on the Monday following the Wednesday publication of the Prizeweek Puzzle. Entries dropped off at the SJFCU Vineland branch must be received no later than 8:30 am on the Monday following the Wednesday publication of the Prizeweek Puzzle. SJFCU assumes no responsibility for late or lost entries.

6. South Jersey Federal Credit Union reserves the right to issue additional instructions in connection with the Prizeweek Puzzle. All such instructions are to become part of the official rules. Visit www.SouthJerseyFCU.com for list of additional rules.

		1				2			3	B		4	W
5	S		A	G	G	E	R		6			P	E
	O		P				A						E
	N		E			7	I	G	H	T			
			R		P		S					I	
			S			9	R				10	D	N
		11				12	I	D			13	F	G
14	T	I		E									
	F			R	E		A	I	N	E	D		
	E				O					G			
										H			
16	T	O	R		E	N	T			T			

NAME: _____

ADDRESS: _____

TELEPHONE: _____

PRIZEWEEK 022115

THIS LIST INCLUDES, AMONG OTHERS, THE CORRECT WORDS FOR THIS PUZZLE.

BID	HOPE	RIDE	TIRE
BOOT	LID	RIP	TORMENT
BRAISED	LIFE	RISE	TORRENT
CAPERS	NIGHT	ROBE	WEEDING
DON	PAPERS	ROPE	WEEPING
DOPE	PRAISED	SONG	WIFE
DUN	RAP	SONS	
FIGHT	REF	STAGGER	
FLIGHT	REGAINED	SWAGGER	
FRIGHT	RETAINED	TIME	

HOW TO ENTER:

Note contest rules at the top of this page.

Readers can deposit their puzzles 24/7

in the drop-slot located in the vestibule of South Jersey Federal Credit Union, 106 West Landis Ave., Vineland, NJ 08360.

Note: Use a debit card from any financial institution to gain access to the vestibule drop box after hours. Entries must be deposited by 8:30 am on Monday.

Or, completed puzzles can mailed to:

South Jersey Federal Credit Union
Prizeweek Puzzle
PO Box 5429
Deptford, NJ 08096-0429

Mailed entries must be received by 10 am on Monday.

**Thinking about what to do
with your tax return?**

**South Jersey Federal Credit Union
has savings products to help your
tax return grow:**

- CDs
- IRAs
- Money Market Accounts
- Vacation and Christmas Club Accounts



**Stop into your
neighborhood branch
located at
106 West Landis Avenue
in Vineland**

800-582-7640

www.SouthJerseyFCU.com



Deptford | Camden | Moorestown | Pleasantville | Vineland | Voorhees

SOLUTION TO LAST WEEK'S PRIZEWEEK PUZZLE

The answers to last week's puzzle are below. For a detailed explanation of the answers to last week's puzzle and additional rules, visit www.SouthJerseyFCU.com

	C		R	E	I	N		C					
	W	A	K	E				B	A	R	K		
	N		L	I	N	E	S		P				
	T		A				O		E				
	O		T				M					C	
	N		E				H	E	A	L	T	H	
	U	S	E	D		G			A			A	
						C	R	A	Z	E	D		N
	H		E		I			G				C	
	O		Y		M			F	O	R	G	E	
	O		R	D	E	R				Y		S	
	T		D			D	A	N	G	E	R		

CLASSIFIEDS

Call 9 a.m - 5 p.m daily, Deadline for paid ads: Friday, 3 p.m. To order your classified, call 856-457-7815 or visit www.grapevinenewspaper.com/classifieds. See box below for additional ordering information.

novick AUTO MALL
driven by our values

We Buy Used Vehicles!

See Merle Graham
808 N. Pearl St., Bridgeton NJ
(856) 451-0095

Need work? Have a business and need more customers? Why not get the word out through *The Grapevine's* Classified section?



Advertise your skills and business in the Classifieds by calling 856-457-7815.



HOME SECURITY SPECIAL
monitoring starting around
\$999
per week

Call Today, Protect Tomorrow!

1-800-682-0802

Mon-Fri 8am - 11pm • Sat 9am - 8pm • Sun 10am - 6pm EST

ALL THINGS BASEMENTY!
and Crawl Spaces too!

- Basement & Crawl Space Waterproofing
- Foundation Repair & Recovery
- Humidity & Mold Control
- Crawl Space Encapsulation

1.866.635.7892
DryGuysGrapevine.com

Electrical Contractor

Micro Electric LLC.
Residential repair, additions, and services. Bonded and insured. "no job is too small."
NJ LIC #14256.
Call 609-501-7777.

For Rent

Individual wanted to share house in Vineland. No charge for utilities. \$100 security deposit. \$750/mo. 609-213-0832

For Sale

FOR SALE: Brown sofa (two reclining ends), love seat. \$200. 856-285-6077.

Tree Service

Joshua Tree & Lawn. Insured tree removal crane service bucket truck service, professional climbers, storm cleanup, yard cleanup/maintenance, 24-hour emergency service. Quality work, reasonable price. Free estimates. 856-503-3361 or 856-794-1783.

Music Lessons

Jump Right Into Music piano lessons. 30 years experience teaching 4 1/2 year olds and up. Please call Ana at 856-313-8273.

Bikes Wanted

Have a bike taking up space in your home? Please consider donating it. The Vineland Rotary Club has partnered with Pedals for Progress to export bikes to third-world countries where they are needed for transportation. Also collecting treadle and portable sewing machines. Contact Henry Hansen at 856-696-0643 for drop-off or pick-up.

Services

Pete Construction. Specializing in decks, roofs and home remodeling. State licensed and insured. Call for a free estimate. 609-335-9251.

Misc.

Chloe is in need of a home. 7-year old declawed and neutered tabby cat needs a home. 856-794-3123 or cudablg@aol.com

Steelman's Drywall.

Drywall installation and repairing nailpops, cracks, water damage, unfinished drywall. Big or small! Call Joe for a free estimate at 609-381-3814.

Hill Tree Service Trimming and removal of trees and hedges and yard cleanup. Free estimates. Please call 856-462-1550.

MLV Roofing. Rubber roofs, shingles, mobile homes, coatings, and repairs. 856-207-9810.

DISH TV Retailer. Starting at \$19.99/month (for 12 mos.) & High Speed Internet starting at \$14.95/month (where available.) SAVE! Ask About SAME DAY Installation! CALL Now! 1-800-816-7254

Help Wanted

WORK AT HOME with Commission Based Phone Sales. Call 609-213-0832.

Mechanic - C Level, F/T, Full Bene. Pkg., D/L & Exper. req'd. Fax resume to 609-561-0840 Arena Buick-GMC, Hammonton.

Farmland Avail.

2 1/2 acres of Farmland in Rosenhayn available for use. Maintenance of grounds required in lieu of rental fee. Call 856-982-0300.

For Rent

1-bedroom apartment with its own private entry, E Vineland area. No pets, no indoor smoking. 856-692-4307

Real Estate

Seashore opportunity Sea Isle City duplex, 5 bedrooms, bonus sixth bedroom, 5 1/2 baths. Three master suite with private baths spacious decks and garage, too many upgrades to list. Early buyer can make interior selections w/o elevator \$1,159,000. Call 609-774-1509. Serious interest only.

House for Rent - Adorable one-bedroom house, large living room, one bath. Eat-in kitchen, loft, large yard, quiet. \$925/month. 1 1/2 month security deposit. 856-697-4416.

The Greater Vineland Chamber of Commerce building, situated at a prime location on South Delsea Drive is looking for a tenant. We have excellent office space available to rent — approximately 800 square feet. Call us at 856-691-7400 today.

Call 9 a.m - 5 p.m daily, Deadline for paid ads: Friday, 3 p.m. To order your classified call, 856-457-7815 or visit www.grapevinenewspaper.com/classifieds

Classifieds

Call for more information
856-457-7815

Only \$10 per ad, per week, up to 20 words; over 20 words, \$0.50 per word. \$0.30 for bold—per word/per issue, \$3 for a Border/per issue. Add a photo for \$15. Mail Ad & payment or go online to www.grapevinenewspaper.com/classifieds.

- | | | | | |
|-----------|-----------|-----------|-----------|-----------|
| 1. _____ | 2. _____ | 3. _____ | 4. _____ | 5. _____ |
| 6. _____ | 7. _____ | 8. _____ | 9. _____ | 10. _____ |
| 11. _____ | 12. _____ | 13. _____ | 14. _____ | 15. _____ |
| 16. _____ | 17. _____ | 18. _____ | 19. _____ | 20. _____ |
| 21. _____ | 22. _____ | 23. _____ | 24. _____ | 25. _____ |
| 26. _____ | 27. _____ | 28. _____ | 29. _____ | 30. _____ |
| 31. _____ | 32. _____ | 33. _____ | 34. _____ | 35. _____ |
| 36. _____ | 37. _____ | 38. _____ | 39. _____ | 40. _____ |
| 41. _____ | 42. _____ | 43. _____ | 44. _____ | 45. _____ |
| 46. _____ | 47. _____ | 48. _____ | 49. _____ | 50. _____ |

Name _____
Address _____
City _____ Zip _____
Phone #: _____
email _____

Check if needed.
Refer to prices above.
☐ Bold
☐ Border

Credit Cards Accepted: _____ Acct. No. _____ Exp. Date _____ 3 Digit # on back of card _____



Signature: _____
Printed Name: _____

Not responsible for typographical errors. • Once an ad is placed, it cannot be cancelled or changed. *The Grapevine* does not in any way imply approval or endorsement. Those interested in goods or services always use good judgment and take appropriate precautions.

Mail Ad
Form with
Payment TO:

The Grapevine

907 N. Main Rd., Suite 205
Vineland, NJ 08360
www.grapevinenewspaper.com

Cumberland County Real Estate Market Update

Due to the large number of short sales and foreclosures there is a lot of inventory that has affected the market conditions in Cumberland County. When a property that is not a short sale or foreclose, is priced right according to the market the property is selling much faster today, therefore the non-distressed inventory is moving faster than we have seen in previous years. With the help of a professional realtor, sellers today are much more educated to navigate the local market. These market conditions and interest rates are still favorable for buyers in our county. Information below is for single family residential properties in Cumberland County, these numbers have been *provided on behalf of New Jersey Realtors.*

January 2013

Median Sales Price:
\$123,400

Days on Market Until Sale:
137

Months Supply of Inventory:
6.6%

January 2014

Median Sales Price:
\$125,000

Days on Market Until Sale:
132

Months Supply of Inventory:
15.8%

January 2015

Median Sales Price:
\$117,500

Days on Market Until Sale:
119

Months Supply of Inventory:
12.1%

REAL ESTATE TRANSACTIONS

The following transactions of \$10,000 or more were filed with Cumberland County in the month of December 2014 (transactions may have occurred in an earlier month). Names listed may, in some cases, be those of buyers' or sellers' representatives. *Due to a transmission error, the November 2014 transactions are unavailable.*

BRIDGETON
21 Nixon Ave., Venetta Westcott (Exec.) to Linda Peek on 12/1/14 for \$40,000
55 Hampton St., Federal Home Loan Mortgage Corp. (by Atty.) to Austin E Headrick on 12/1/14 for \$42,125
367 Indian Ave., Joan M DeSantis (by Atty.) to Alfred Comer on 12/1/14 for \$104,900
19 Crestwood Dr., Boyd Francis Young to Teresa Perez Ramirez on 12/2/14 for \$92,000
100 Belmont Ave., Fannie Mae (by Atty.) to Austin Headrick on 12/4/14 for \$34,000
27 Sharp Ave., Donna Walker to Alma Perez on 12/4/14 for \$64,000
268-270 Cohansey St., Kashmiri Rolu to Gary Dean Albert, II on 12/4/14 for \$70,000
230 Belmont Ave., Jasper Robinson to Cecil Odell Seymour on 12/8/14 for \$74,500
5 Timber Rd., PHH Mortgage Corp. to Nicandro Perez-Cruz on 12/9/14 for \$44,000
431 Indian Ave., Samuel R Gubbine, Jr. to Gabriel Santiago-Paredes on 12/15/14 for \$90,000
55 Hampton St., Austin E Headrick to Lincoln Deli & Grocery LLC on 12/18/14 for \$47,300
162 W Commerce St., Cristen P Darrigo to Christina Darrigo on 12/18/14 for \$80,000
558 Irving Ave., Josefa Lucero to Julio C Palma Cazares on 12/18/14 for \$83,000
14 Spruce St., Geraldine Holley-Howard to William Gould on 12/22/14 for \$16,000

COMMERCIAL TWP
1612 Main St., Stephen Moore (Ind. Exec.) to Anthony J Corsello on 12/2/14 for \$60,000
8125 Red Fern N Dr., Bank of America to Patricia Givens on 12/4/14 for \$20,700
130 Robin Rd., Joshua R Lore to Susan Poli on 12/4/14 for \$112,000
2134 E Buckshutem Rd., Edna E Creet (Est. by Exec.) to K&L Property Management on 12/19/14 for \$40,000

DEERFIELD TWP
765 S Shiloh Ave., Steven J Chipola to Wilfredo Gordillo on 12/11/14 for \$60,000
772 Sherman Ave., Victor M Balaguer to Edward F Miller, Sr. on 12/17/14 for \$195,000

FAIRFIELD TWP
334 Gouldtown &C., Barbara Miller (by Atty.) to Ruben Torres on 12/1/14 for \$75,000
934&944 Backneck Rd., Vincent Marolda to State of New Jersey Dept. of Env. Prot. on 12/3/14 for \$550,000
294 Gouldtown Rd. & C., Herb Willis, Jr. to Miguel Gonzalez on 12/4/14 for \$15,500
17 Holly Way, Carl Hansen to Charles Burkert on 12/15/14 for \$188,000
8 Green Way, United States of America Rural & C. to John A Frazer, Sr. on 12/17/14 for \$87,000
157 Lummis Mill Rd., Sherry Lee Piper to Michael A Henderson on 12/22/14 for \$116,500

GREENWICH TWP
182 Davis Mill Rd., Edward C Elwell to Douglas R Gibson on 12/5/14 for \$189,900

HOPEWELL TWP
525 Barretts Run Rd., Cohansey Bridge LLC to Bat Realty LLC on 12/5/14 for \$50,000
121 Stave Mill Rd., Craig D Young to Stone Financing LLC on 12/19/14 for \$134,900
121 Stave Mill Rd., Stone Financing LLC to Michael Bunchan on 12/19/14 for \$134,900

MAURICE RIVER TWP
11 Hands Mill Rd., Cheryle J Eisele (Ind. Atty.) to Leon Errickson on 12/2/14 for \$47,000
26 Market St., Richard B Irwin (by Atty.) to Herbert Richard Simmerman, Jr. on 12/15/14 for \$45,000
150 Hesstown Rd., Diane J Lupperger (Est. by Exec.) to Aaron Rosiak on 12/19/14 for \$44,900
81 Station Rd., Lisa Ann Champion to Brian F Griffiths on 12/22/14 for \$125,000

MILLVILLE
417 W McNeal St., Willis Associates to Cincinnatus Properties LLC on 12/1/14 for \$26,500
10002 Buckshutem Rd. & C., Hading Liberi (Adm.) to Green Acres Farms Inc. on 12/2/14 for \$762,040
3 Amy Ct., Thomas E Fisher to Tara M Chiarello-Hanstein on 12/3/14 for \$211,000
426 Lance Ct., RPJ Properties LLC to Bruce L Kuhn, Jr. on 12/4/14 for \$190,000
1610 Acorn Dr., William Z Gant to James McCarthy on 12/8/14 for \$170,000
450 Val Ln., Juan Carlos Avila to Charles Maines, Jr. on 12/8/14 for \$179,535
724 Orange St., PBE Companies LLC to Surfside Seafood Products LLC on 12/11/14 for \$530,000
808 N Third St., Patti Phillips to Robert Weisman on 12/12/14 for \$77,500
508 Kimberly Dr., Rick A Hatcher to Karolyne P Ancheta on 12/12/14 for \$210,000
416 W Foundry St., Wilma Havens Weaver to Evelyn Tolbert on 12/15/14 for \$50,500
2300 S Second St., Country Meadows MHP LLC to CM Land Co. LLC on 12/15/14 for \$1,747,000
796 Ramah Rd., Fannie Mae (by Atty.) to DDR Interstate Realty LLC on 12/17/14 for \$25,000
903 & 907 Pleasant Dr., Jack P Davis to RPJ Properties LLC on 12/17/14 for \$55,000
407 W Main St., Millville Savings & Loan Assoc. to Alberte M Martin on 12/17/14 for \$129,000
2404 Shelburn Rd., Carla B Yates to William Robert Benfer on 12/17/14 for \$155,000
707 Columbia Ave., Brian M Kutner to Glassteeth LLC on 12/18/14 for \$150,000

STOW CREEK TWP
536 Marlboro Rd., Lynx Asset Services LLC to Deborah A Keifrider on 12/4/14 for \$35,000
23 Serata Dr., Fannie Mae to Leah Marie Place on 12/11/14 for \$59,850

UPPER DEERFIELD
71 Fern Rd., Brian L Winrow to Wendy A Dunns on 12/4/14 for \$13,000
534 Old Deerfield Pk., William Sickler, Jr. (Exec.) to Trust Deerfield Presbyterian Church on 12/4/14 for \$47,500
430 Centerton Rd &C., Lenora L Hansbury (Exec.) to Centerton Nursery Partners LLC on 12/4/14 for \$135,000
110 Cornwell Dr., New Vistas Corp to J&L Enterprise Investments LLC on 12/4/14 for \$550,000
30 Parkview Heights, Bruce R Riley (Exec.) to Jeremy Pepper on 12/10/14 for \$162,000
370 Rosenhayn Ave., John David Kaplan to Gianaris Properties LLC on 12/11/14 for \$110,000
315 Centerton Rd., Kenneth H Kennedy to Elwood R Richwood on 12/17/14 for \$70,000
198 Northville Rd., United States of America Rural & C. to Inspired Investments Properties LLC on 12/17/14 for \$91,000

156 Finley Rd., Dennis P Kelly, Jr. to Marcia Reed Weist on 12/17/14 for \$186,300

VINELAND
1621 Eilene Dr., Thomas S DiPietro, Jr. to Lisa M Bufardeci on 12/1/14 for \$125,000
895 W Forest Grove Rd., Timothy J Sharpless to Vineland First Church of the Nazarene on 12/1/14 for \$165,000
560 Sarah Pl., Redeemer Lutheran Housing Inc. to Luther Acres Urban Renewal LP on 12/1/14 for \$5,139,051
669 Foster Ave., Federal Home Loan Mortgage Corp. (by Atty.) to Arthur Coslop on 12/2/14 for \$99,900
2910 Hance Bridge Rd., Residential Mortgage Loan Trust 2013-Tt2 (by Atty.) to Pavel Savchenko on 12/2/14 for \$118,000
381 Carlisle Dr., Charles R Biondi to Phillip J Mendoza on 12/3/14 for \$144,000
2139 E Chestnut Ave., Terrace East Real Estate Associates LP to Anita L Wagner on 12/4/14 for \$70,000
706 Oxford St., William J Berghof to Carmen L Rosario on 12/4/14 for \$110,000
464 John St., Lori Benson to William Buonasorte, III on 12/4/14 for \$143,000
3284 Menantico Rd., Margaret A Goffredi to Edwin C Bergamo, Jr. on 12/4/14 for \$189,000
3391 Venturi Ln., NVR Inc. (DBA) to Ronald S Mosley on 12/4/14 for \$316,149
2139 E Chestnut Ave., Terrace East Real Estate Associates LP to Joseph Paul D'Amato on 12/5/14 for \$65,000
1628 W Forest Grove Rd., Robert Fred Ritter (Adm.) to Trinidad Vera on 12/5/14 for \$65,000
723 Yale Terr., Liza Santiago to Dina M DelVecchio on 12/5/14 for \$114,000
3533 Menantico Rd., Wendy A Melini to Nikolay Pavlovich Krivosheyev on 12/5/14 for \$140,000
3269 N Delsea Dr., Frederick L Tolley to Judith L Cortes on 12/5/14 for \$182,500
2056 Indian Dr., Fannie Mae (by Atty.) to Joseph Egbeh on 12/5/14 for \$204,500
33 Glenn Terr., David Cavagnaro to Derrick Williams on 12/8/14 for \$140,000
2506 N East Ave., Ruth Solano to Frank Loretta, Jr. on 12/8/14 for \$185,000
2065 E Landis Ave., Paul Curcio to Laurie Trongone on 12/8/14 for \$230,000
766 Amber Ln., Deutsche Bank National Trust Co. (Trust, by Atty.) to Joseph Blushtein on 12/11/14 for \$133,350
316 W Pear St., MJP Enterprises Inc. to Diego Rivera on 12/12/14 for \$10,000
405 W Park Ave., MJP Enterprises Inc. to Diego Rivera on 12/12/14 for \$15,000
323 W Park Ave., MJP Enterprises Inc. to Rosita Quintana on 12/12/14 for \$50,000
17 Glenn Terr., David H Blom to Heriberto Santiago, Jr. on 12/16/14 for \$230,000
645 W Oak Rd., John A Deklerk to Stephen Bonsall on 12/17/14 for \$165,000
561 North East Blvd., Cohansey Bridge LLC to Vineland Northeast LLC on 12/18/14 for \$89,000
1561 Westwood Dr., Carl Asselta, Jr. to Luis Esquilin on 12/19/14 for \$220,000
3119 Chamblings Ct., Vineland Warehouse LLC to Gongli Realty LLC on 12/22/14 for \$243,000



Charles W. Moren t/a **Joshua Tree & Lawn**

Tree Removal • Crane Service
Professional Climbers • Storm Clean-up
Yard Clean-up/Maintenance
Quality Work • Reasonable Prices

• **Insured**
• **24-hour Emergency Service**

FREE ESTIMATES
phone **(856) 794-1783** • cell **(856) 503-3361**

RIDE YOUR REFUND INTO



with

SCOTT

RALEIGH

GIANT

Bikes, Accessories, Service and More!

*Now carrying Raleigh Bikes



WE ARE EXPANDING SALE STARTS NOW!

www.BicycleMojo.com
(856) 457-5220
1851 W. Landis Ave.
Vineland NJ 08360



- Hot & Cold Subs
- Custom Cakes Made to Order for Any Occasion
- Daily Soups & Specials
- Cupcakes & Cookies Available Daily

\$5 OFF

any purchase • \$30 or more
exp. 3/3/15

FREE Sugar Cookie
with any hot sub order
exp. 3/3/15

~ Family Owned & Operated ~
J&J Deli and Kakes
2 Northwest Blvd, Newfield
856-213-6533
JJdeliandkakes@gmail.com
Mon.–Sat. 10am–7pm • Closed Sundays

COMMUNITY CALENDAR

HAPPENINGS

WEDNESDAY, FEBRUARY 25

Prostrate Cancer Support Group. Inspira Fitness Connection, 1430 W. Sherman Ave. (2nd floor), Vineland. 7–9 p.m. Jane C. Robbins P.T., C.L.T., the Lymphedema Program Manager at Inspira Rehab Care, is guest speaker.

THURSDAY, FEBRUARY 26

Last Thursday of the Month Dinner. Semper Marine Detachment #205, 2041 W. Landis Ave., Vineland. 4–7 p.m. \$7 adults, \$4 children under 12, children 5 and under free. Dinner includes Spaghetti and meatballs, salad bar, buttered roll, beverage and desserts. 856-293-8166 or email etf423@aol.com.

FRIDAY, FEBRUARY 27

St. Mary's Night of Service. St. Mary School, 735 Union Rd., Vineland. 6:30–8:30 p.m. A night of fun for all ages, in association with the Wildlife Refuge, Fido & Friends, Smiles for Soldiers, Nickels for Nets, Books and Blankets, Blessing Bags, and Project Family. Come help make goodie bags for the homeless, blankets for children, art for soldiers, dog treats for the ASPCA, birdfeeders, and rolling nickels to save children from malaria. Seeking donations of used towels or blankets, used books of all levels, various toiletries of any size (hotel soaps, etc.), and nickels. All donations can be dropped off at St. Mary's School. 856-692-8537, ext. 324.

Root Vegetable Cook-Off. Bogart's Bookstore. 210 N. High St., Millville. 6 p.m. Bring your most creative dish made with root vegetables. Prizes, food, music. All dishes must arrive by 6 p.m. Free to enter.

SATURDAY, FEBRUARY 28

Pokemon Club. Vineland Public Library, 1058 E. Landis Ave., Vineland. 1:30–3 p.m. Ages 7 to 16 invited to participate in a discussion of all things Pokémon. May bring own Nintendo DS handhelds, games, trading cards, etc. Registration required. Free program. 856-794-4244, ext. 4246.

Sickle Cell Awareness Luncheon.

Cosmopolitan Restaurant, 3513 S. Delsea Dr., Vineland. 11:30 a.m.–4 p.m. African attire optional. Cost \$27. 856-692-4037.

Winter Wellness Day for Mom & Moms-to-Be.

The Café of Life Wellness Centre Studio 1 N. Valley Ave., Vineland. 1–4 p.m. Complimentary fun-filled day of moms inspiring, supporting, and educating other moms! Special topics include prenatal and infant massage, hypnobirthing, breastfeeding, homebirth, doula support, Bradley Method of Natural Childbirth, and more. Beverages and healthy snacks provided. RSVP (by Feb 25) to 856-503-9499.

Lenten Schedule

• Bread 'n Broth continues **each Wednesday** evening at 6 p.m. It is followed by Lenten Service at 7 p.m. at Redeemer Lutheran Church, 2384 E. Landis Ave., Vineland. Call 856-691-4278 for more information.

• Spirit & Truth Ministries would like to invite you to their Easter Luncheon & Egg Hunt on **Saturday, March 21**, at the First Presbyterian Church, 8th and Landis Avenue, from 11:30 a.m. to 2 p.m. in Vineland. More information by calling 856-692-2603.

Poetry Workshop. Bridgeton Public Library, 150 E. Commerce St., Bridgeton. 2 p.m. R.G. Evans, published poet and Creative Writing teacher at Cumberland Regional High, presents workshop for ages 18 and up. Register at 856-451-2620.

Wire Wrapped Pendant for Beginner. Village on High at 501 N. High St., Cottage J. 10 a.m. \$15 plus tax includes materials and use of tools. Registration required; call 856-825-2050 to register or stop in.

SUNDAY, MARCH 1

Pasta Dinner Fundraiser. North Italy Beneficial Association Hall, 414 Virano Ln., Vineland. Noon–4 p.m. Vineland High Boys Basketball Program is host. Tickets \$10 for pasta, meatballs, salad, and more. Takeouts available. Tickets from any VHS Boys Basketball player or coach. Checks should be made out to VHS Activities fund. kcerana@vineland.org.

MARCH 1 AND 7

Pisanki Workshops. Triple Oaks Nursery, 2359 Delsea Dr., Franklinville. Learn about and create the ancient and intricate Ukrainian art of decorating eggs with wax and dye, and how this tradition continues today to celebrate Easter and the coming of Spring. Call for class fees and sign-ups. 856-694-4272.

MARCH 4 AND 5

Festival of Purim, Beth Israel Congregation, 1015 E. Park Ave., Vineland. Begins on March 4 at 6:30 p.m., continues on March 5 with Shacharit services at 6:45 a.m. Both services will include the reading of the Megillah, the scroll containing the Book of Esther which recounts the Purim story. 856-691-0852.

THURSDAY, MARCH 6

Farmland Workshop: Best Practices For Soil & Land Conservation. Upper Deerfield Township Senior Center. 7 p.m. Free lecture co-sponsored by South Jersey Land and Water Trust, NJ Audubon Society, and US Department of Agriculture.

RSVP to cnolan@sjlandwater.org

FRIDAY, MARCH 6

Annual Dessert Auction. Cumberland Christian School, 1100 W. Sherman Ave., Vineland. 6:30 pm. Live and silent auctions. Baskets filled with gift cards and certificates. Tickets \$10, children 12 and under \$5. Deadline 2/23. Proceeds benefit annual fund drive. For tickets or to make a donation, call 856-696-1600, ext. 304.

Designer Bag Bingo Night.

St. Augustine Prep School, 611 Cedar Ave., Richland. Doors open 6 p.m., event at 7 p.m. Benefits Mennies Elementary School No one under 21 admitted. Cost \$25 per ticket (includes 10-game bingo packet, a door prize ticket, coffee, desserts). Players should bring snacks and beverages. Space limited, reservations must be made in advance. Tables of 8 to 10 available. 856-794-6957 or kspeakman@vineland.org.

MARCH 6 AND 7

Antiques & Collectibles Sale. Woman's Club of Vineland, 677 S. Main Rd., Vineland. Friday 10 a.m.–6 p.m., Sat. 10 a.m.–4 p.m. Glass, jewelry, furniture, quilts, flowers, and more.

SATURDAY, MARCH 7

St. Mary School PTA 6th Annual Wine, Chocolate & Dinner Social.

Greenview Inn at Eastlyn, 4049 Italia Ave, Vineland. 6–10 p.m. Wines, chocolates, Raw Bar, Premium Basket, Live and Silent Auctions, Cash Bar, Live Entertainment. Food presented by Chef Rob Buono, live a capella, Retro-Pop novelty act called the Hotsy Totsy.

Scrapbooking 15-Hour Crop 'Till You Drop.

Edgerton Christian Academy, 212 Catawba Ave., Newfield. 8 a.m.–11 p.m. \$45 includes drinks, breakfast, lunch and a hot dinner. Transportation of scrapbooking supplies into the building provided by honor students. Vendors, basket auction, make and takes, card making and an exchange box. Space limited so reserve your spot by e-mailing Mrs.Cif@aol.com. Checks payable to ECA; mail to PO Box 646, Newfield, NJ 08344.

Designer Bag & Basket Bingo.

Woodland Country Day School, 1216 Roadstown Rd., Bridgeton. Doors open at 6 p.m., games begin at 7 pm. Coach, Michael Kors, Kate Spade, and Vera Bradley bags and baskets made by that famous company in Ohio. Tickets purchased March 6 are \$20 each, tickets at the door are \$25 (ticket includes 20 games and a door prize ticket for a Coach item). Also, raffles and a 50/50 during the evening. There will be food available for purchase along with baked goods and refreshments. 856-453-8499 ext. 112 or e-mail Diane at reseed@wcdsnj.org.



This 'n' That

A wrap-up of a recent event and an invitation to the next.

As we wrap up some initiatives and look forward to others, I would like to say a few final words about “Dine on Landis” and give you a sneak peek at our Main Street Vineland Meet-and-Greet/Volunteer Recruitment Night that we’ll be having in late March.

Our two-week “Dine on Landis” program ended past this Sunday. It was great to see people come out for the \$8 lunch specials and \$10 dinner specials. I want to thank Susquehanna Bank for sponsoring this event and also all the eateries who participated— Los Lomas Fresh Mexican Grille, Sunnyside Kitchenette, Spataro’s, Anna Mae’s Pretzels, and Fisher Salads, Antojito’s Deli, Downtown Deli, Kura Thai and Sushi, Landis Diner, Landis Pig Roast, Matias Grocery & Deli, and Tony Soprano’s Pizza & Ristorante. The program has certainly created more awareness of the array of dining opportunities we have downtown and we plan to have similar events like this in the future.

Do want to help out with our events—as a doer, a planner, or both—and don’t know how to go about doing it? Well, we’ve got the perfect opportunity for you coming up very soon. Come out to our Main Street Vineland Meet-and-Greet/Volunteer Recruitment Night, set for **Thursday, March 26**, from 5:30 to 8 p.m. You’ll be reading more details about it soon, but I can tell you now that it will be a tremendous opportunity to not only

get to meet and know the volunteers, committee chairpersons, and Board members who work so hard to make our organization run, but to give you a chance to sign up to help us as well.

We’ve got a lot going on—and you’ll be reading about those things in future columns—and we can use your help and talents. Whether it’s fundraising and recruiting other volunteers, whether it’s helping to beautify our downtown, whether it’s planning and helping out at events, or whether it’s working to make our downtown businesses stronger, we have a place for you—whether you have a lot of time or just a few hours. For the Meet-and-Greet/Volunteer Recruitment Event, we’re working on a program that will give you an idea of what we’re all about, and we’ll make it very easy for you to come on board. We’ll also have some light hors d’oeuvres to start. So, join us and bring a friend!

Make downtown Vineland your destination for shopping, entertainment, and fun all year round. Save money on gasoline, and also enjoy the events we have in town. To save additional money, don’t forget to purchase your Main Street Vineland/Landis MarketPlace Loyalty Card. 🍷

For more information on Main Street Vineland’s events and activities, call 856-794-8653 or visit www.mainstreetvineland.org, or check them out on Facebook. You can also e-mail rswanson@vinelandcity.org.

42nd Annual Dandelion Dinner and Beer Tasting

The 42nd annual Dandelion Dinner and Beer Tasting, hosted by the Greater Vineland Chamber of Commerce and sponsored by Capital Bank of New Jersey, will take place **Saturday, March 28**, 6 p.m., at Merighi’s Savoy Inn, 4940 E. Landis Avenue, Vineland.

Merighi’s Banquet Chef will showcase the versatility of the dandelion with an amazing buffet he’s creating for the evening. The Beer & Wine Tasting portion of the event is sponsored by Shoprite Wines & Spirits of Shoprite Plaza, Lincoln & Landis avenues. Attendees will receive a commemorative glass they can use for

the tasting and take home.

This annual community event began in 1973 as a way to celebrate Vineland’s agricultural heritage and has contributed to international recognition of the city as “the Dandelion Capital of the World.” The event attracts more than 400 guests every year. Music for dancing will be provided by DJ Bob Morgan Entertainment.

Also this year will be a complimentary photo booth where guests can take pictures to remember the event. Tickets are \$50 per person and must be purchased before March 13. This event sells out so don’t wait to buy a ticket! Call the GVCC at 856-691-7400 to be a sponsor or buy tickets. You can also visit www.vineland-chamber.org to purchase tickets.



Wholesale-Retail
 1853 Vine Rd. Vineland
691-4848
 Fax: 856-691-2294
marcaccimeats@verizon.net
SPECIALS
Feb. 25-28


We offer HIGH quality meats at LOW prices. Here at Marcacci we strive to make your shopping experience the best. So come on in and

Experience the Difference!

STORE HOURS: MON.-SAT. 7:00 AM – 6:00 PM

BONE-IN CHICKEN THIGHS <small>(10 LBS. OR MORE)</small> 79¢ lb.	BONELESS PORK LOIN <small>(CUT FREE)</small> \$1.29 lb.	MEXICAN CHORIZO \$3.29 lb.	BONELESS CHUCK ROAST \$3.99 lb.
CHICKEN CUTLET \$2.49 lb.	PORK NECKBONES <small>(CUT FREE)</small> 99¢ lb.	15 LB. CASE OXTAIL \$3.50 lb.	1 LB. BAG SALMON FILLETS \$5.99 ea.



ShopRite Wines & Spirits
 Lincoln & Landis Ave • ShopRite Shopping Center
 3600 E. Landis Ave. & Lincoln Ave. Vineland • 856-696-5555
New Discount Prices
ESCAPE THE WINTER BLUES

Prices effective: 2/25-3/3/15


Guaracini's Choice
\$8.99 6 pack
Reg. \$10.99
PREMIÈRE BIÈRE FRANÇAISE


Bacardi Superior
\$19.99 1.75 L.
Reg. \$29.99


Patron Silver
\$39.99 1.75 L.
Reg. \$57.99


Jose Cuervo Gold
\$32.99 1.75 L.
Reg. \$39.99


Bosco
MONTEPULCIANO D'ABRUZZO
\$9.99 1.5 L.
Reg. \$12.99

Escape Coupon
\$5 OFF
Your Purchase of Wine, Beer, Spirits of Your Choice ~ \$40 or more~ Excludes tobacco, sale items and items prohibited by law. Cannot be combined with any other offers. Expires 3/31/15.

Senior Coupon
\$1 OFF
Your Purchase of Wine, Beer, Spirits of Your Choice ~ \$10 or more~ 62 or older. Excludes tobacco, sale items and items prohibited by law. Cannot be combined with any other offers. Expires 3/31/15.

Like “ShopRite Wines & Spirits” on  to receive extra savings and coupons

JOHN & DOLORES WELCOME YOU BACK TO

Casa Dori

Italian

Wine Bar
Coming
Spring 2015!



Chef's Table Now Available
in Private Room for 10–16 people
4-COURSE MEAL

Starting at **\$22.95** per person
All included • Choice of 2 appetizers & 3 entrées

\$10⁹⁵ Early Dinner Specials

Every Wednesday & Sunday • 4–8 p.m.

Choice of 6 entrées • Includes choice of soup or salad, beverage & dessert

ALL DISHES MADE TO ORDER!

Available for private parties
Catering on and off premises • BYOB

**Gift Certificates
Available**

SERVING DINNER TUES.—SAT. 4 P.M.—9 P.M.

1303 Harding Hwy., Richland • 856-839-0302 • CasaDori.com



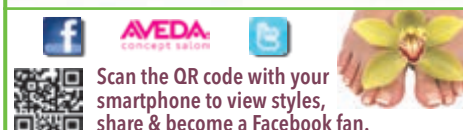
**Love The
Grapevine?**

**Why not “like” us
on Facebook?**



*Pamper Yourself or
Someone Else Today*
at
Salon Fabrojaé

**One-hour facial
and foot massage
simultaneously**



782 Brewster Road, Vineland NJ
856-794-9696
salonfabrojae.com

Landis Diner

**Breakfast
Special
ONLY**

\$2⁷⁹

Includes 3 eggs

**Lunch
Specials
ONLY**

\$5⁹⁹

Includes soup or salad

**Dinner
Specials
ONLY**

\$9⁹⁹

Includes soup or salad & dessert

601 E. Landis Ave. • Vineland
856-696-3412 • landisdiner.com
Open Every Day • 7am–8pm



MARIO J. RUIZ - MESA • INSURANCE AGENCY LLC

- Over 12 Companies to Better Serve You!
- Best Coverage—Best Pricing!
- Live Person on Phone—Excellent Customer Service
- Family Owned and Operated—Serving the Community for Over 45 Years

720 E. LANDIS AVE. • VINELAND NJ 08360
(856) 696-1698 • FAX (856) 691-8693

Mario J. Ruiz-Mesa, A.A.I.
Independent Insurance Agent Trusted Choice



In Our Schools



OLMA Has School Spirit

Our Lady of Mercy Academy celebrated this year's Catholic Schools Week with lots of school spirit and pride. This year's Catholic Schools Week theme was "Catholic Schools: Communities of Faith, Knowledge and Service." Each day the OLMA students dressed up to a different theme. They celebrated twin day, Hawaiian day, pajama day, and decade day.

Top, from left: Juniors Katie Kavanagh, Sam Spurrier, Ashleigh Burrichter, and Jessica Baals show off their Hawaiian outfits.

Freshmen Morgan Hagerty, Grace Bernard, and Jordan Ruberti match in leopard print on twin day.

VHS Football Star to Play for Temple

Jeremiah Atoki, a Vineland High School senior football player who excelled at five different positions, signed a national letter of intent to play Division I Football at Temple University with a full athletic scholarship.

Atoki was a three-year varsity starter for the Fighting Clan, after transferring from Red Oak High School in Texas his sophomore year. He also runs track for the Red and Gray.

"Jeremiah led the team in tackles and receptions the last two years," said his coach, Dan Russo. "He is extremely versatile and was a standout at five different positions—running back, wide receiver, outside linebacker, safety, and cornerback."

Russo said Atoki "works just as hard in the classroom as he does the football field. He currently has a 3.0 GPA and excels in mathematics." Russo said Atoki would like to become a math teacher.

"I'm extremely proud of Jeremiah's accomplishments," said Russo. "His mother (LeAnne Hadnot) did an excellent job raising him. Jeremiah is what we are looking for in a Vineland High School football player. He is a true student-athlete with incredible talent. The Vineland High School football program is excited to see Jeremiah play at the next level for Temple University."

This is the second year in a row that a member of the Vineland High School football program has earned a full athletic scholarship, said Russo.

From left, Dr. Thomas McCann, VHS Principal, Williamae Latimore, Atoki's great-grandmother, Cheryl White, grandmother, LeAnne Hadnot, mother, Dan Russo, Atoki, Elliot DeShields, Track Coach, Chris Atoki, brother, and Don Robbins, VHS Director of Athletics.



Choo to Perform with All South Jersey Band



Jonathan Choo, a sixth grade student from the Veterans Memorial School Band, has qualified to perform with the All South Jersey Junior High Band, said Ed Zatzariny, the school's band director. More than 300 students from all over South Jersey auditioned recently at Southern Regional Middle School in Manahawkin.

The All South Jersey Junior High Band is sponsored by South Jersey Band and Orchestra Directors Association (SJBODA). SJBODA covers the largest geographical region area of the three regions in New Jersey-Atlantic,

Burlington, Camden, Cape May, Cumberland, Gloucester, Ocean, and Salem Counties. The concert will be held March 1 at 3 p.m. at Lower Cape May Regional High School.



Health Occupation Students Win Medals

Eleven of 17 Vineland High School students in the Health Occupations Students of America (HOSA) program won medals in the February 7 Southern Regional Conference in Neptune, NJ, according to Angela D'Ottavio, a registered nurse who teaches health care electives at VHS and is HOSA advisor.

Hundreds of students from Southern New Jersey participated in the competition, said D'Ottavio.

Of the 11 medalists, two won first place: seniors Nestor Cruz, in Health Topic Speaking Skills and Samantha Kaur, chapter vice president, for Health Poster. Two other students scored high enough to qualify for the state competition March 21-22 at the Passaic County Technical Institute. Megan Lorence and Carlos Motoa, both seniors, won medals in Extemporaneous Writing, Health Topic.

The other medal winners and their competitive category were: Aaliyah Davy, Nursing Assistance; Sejal Menghani, Extemporaneous Writing, Health Topic; Jared Martine, Health Poster; Elissia Forty, Researched Persuasive Speaking, Health Topic; Kyle Castellini, Prepared Speaking; Tiffany Hernandez, Job Seeking Skills; and Fradelly Delacruz, Researched Persuasive Speaking.

The other VHS participants included Aaska Patel, Job Seeking Skills; Nyaska Ramirez, Prepared Speaking; Shanelle Stewart, Medical Terminology; Vanessa Sanchez-Miranda, Health Poster; Neha Ashraf, Job Seeking Skills; and Alexcia Davis, Health Poster.

First row, from left: Shanelle Stewart, Samantha Kaur, Vanessa Sanchez-Miranda, and Aaliyah Davy. Second row: Angela D'Ottavio, R.N., MSN, Advisor, Megan Lorence, Nestor Cruz, Sejal Menghani, Neha Ashraf, and Dr. Thomas McCann, Principal, VHS. Back row: Jared Martine, Carlos Motoa, Elissia Forty, and Kyle Castellini.

Crusader Cafe Wins National DECA Award



The Delsea School Store (Crusader Cafe) has once again received the highly coveted Gold-Level Certification with National DECA. This required students Shelby McCarty, Joe Skala, and Megan Geisert to create and submit a 50-page comprehensive operations manual for their school-based enterprise (SBE).

The students have won three seats at the SBE Academy held at The DECA International Career Development Conference in Orlando Florida, in April 2015. The students will participate in competition and career development, as well as leadership and business training with some of the top executives in the business world today.

PAWN OUTLET & CASH FOR GOLD

GET CASH NOW!

WE PAY THE HIGHEST PRICE!

"We Pay Top Dollar For Your Gold"

- Gold
- Diamonds
- Platinum

- Silver
- Estate
- Jewelry

- Gift Cards
- Watches

Buying & Selling tools, power tools, musical instruments, electronics, and more...
Hours: Mon.-Thurs. 10am-6pm, Fri. 10am-4pm, Sunday 11am-5pm (closed Saturday)

856-213-6979

JD PLAZA • 942 S. Delsea Dr., Vineland

MAIN'S MEAT MARKET

ALWAYS FRESH

EVERYTHING YOU NEED

1370 S. Main Rd. • Vineland

856-690-8686 • Fax 856-690-8661

~ Credit Cards Accepted ~

Friendly Service • Great Prices

We Accept Food Stamps

Hours: Mon-Sat 8 am – 7 pm • Sun 9 am-2 pm

This Week's Specials

10 lb. box	Homemade Burgers (4 oz.)	\$28 /box
	Full Beef Briskets.....		\$3.99 /lb.
	Chicken Wings		\$1.89 /lb.
	Boneless Chicken Breast.....		\$1.79 /lb.
	End Cut Pork Chops		\$1.79 /lb.
	New York Strip Steak.....		\$6.99 /lb.

Package Deal

5 lb Center Cut Pork Chops, 4 lb Beef Cubes,
5 lb Boneless Chicken Breast, 2 lb Bacon, 4 lb Lean Ground Beef

\$69⁹⁹

Customized Packages Available

A Great Package Deal

3 lb Beef Cubes, 5 lb Boneless Chicken Breast,
4 lb Sirloin Steak, 2 lbs. Bacon, 5 lb Pork Chops, 3 lb Beef Roast, Slab of Ribs

\$99⁹⁹

Ask About Customizing Your Package

Butcher's Special

Beef Short Ribs The Best Ribs in Town!! **\$3⁹⁹**/lb.

UNSATISFIED WITH YOUR SNOW PLOWING?

CALL 856 694 0922

WE CAN DIG YOU OUT!

WWW.GRAPEVINENEWSPAPER.COM | the grapevine { 19 }

Capital Is Vineland Urgent Care's Bank



Dr. Wasiq Narvel and Dr. Sanjay Bhendwal
of Vineland Urgent Care

Vineland
Urgent Care
NOW OPEN
in Lincoln Plaza
Lincoln & Landis Avenues
7-Days • 10am - 8pm
VinelandUrgentCare.com

Fee-Free Checking With Interest Is Just One Reason For It!



Our Focus Is You.

175 S. Main Road & 1234 W. Landis Avenue, Vineland, NJ • 856.691.1234 • CapitalBankNJ.com



Interest rate may vary. Offer may be withdrawn at any time without previous notice. Fees may reduce earnings.

