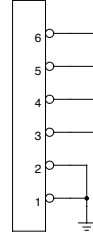


J5
USB-TTL



If using FTDI TTL-232R-5V cable, you can jumper USB_Vin to Vcc2 to power the board with USB power. If you do so, DO NOT simultaneously provide other external power.

Connector for FTDI USB-TTL cable.

Vcc

J1
①
②
③
④
⑤
⑥
⑦
⑧

C1
0.1 uF

C3
18 pF

C2
18 pF

XTL

ATmega328P U1

1 PC6 (RST) (SCL) PC5 28
2 PD0 (RxD) (SDA) PC4 27
3 PD1 (TxD) (ADC3) PC3 26
4 PD2 (INT0) (ADC2) PC2 25
5 PD3 (INT1) (ADC1) PC1 24
6 PD4 (T0) (ADC0) PC0 23
7 Vcc
8 GND
9 PB6 (XTAL1)
10 PB7 (XTAL2)
11 PD5 (T1) PB4 (MISO) 18
12 PD6 (AIN0) PB3 (MOSI) 17
13 PD7 (AIN1) PB2 (OC1B) 16
14 PB0 (ICP1) PB1 (OC1A) 15

28
27
26
25
24
23
22
21
20
19
18
17
16
15

J2
⑥
⑤
④
③
②
①

R2
1 k

LED

Vcc

C7
0.1 uF

J3
⑧
⑦
⑥
⑤
④
③
②
①

Vcc

J4
Power
①
②
③
④
⑤
⑥

3V3
(Unused)

Vcc

Vin:1

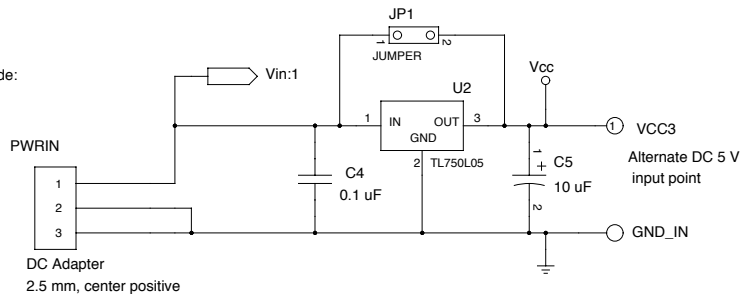
Reset

S1
1 2

Use Jumper or regulator.

With Jumper, acceptable inputs include:
5 V DC regulated adapter,
4.5 V battery input

With regulator, acceptable inputs
are DC power supplies, 5.5-12 V.



DC Adapter
2.5 mm, center positive

Copyright 2010, Windell H. Oskay/Evil Mad Science LLC
Distributed under the TAPR Open Hardware License
www.tapr.org/OHL

Freeduino FTW, BTW.

An Open-Source Design by
Evil Mad Scientist Laboratories
www.evilmadscientist.com

Fabricated for
Evil Mad Science LLC
<http://evilmadscience.com/>

TITLE Diavolino	
FILE: diavolino.sch	REVISION: A
PAGE 1 OF 1	DRAWN BY: Windell H. Oskay